



ENGLISH

User Guide

LG-E400f

P/N : MFL67500337 (1.0)

www.lg.com



CE 0168 



English

LG-E400f User Guide

This guide helps you get started using your phone.

If you need more information, please visit www.lg.com.

- Some of the contents of this manual may not apply to your phone. This depends on your phone's software and your service provider.
- This handset is not recommended for the visually impaired because of its touch screen keyboard.
- Copyright ©2012 LG Electronics, Inc. All rights reserved. LG and the LG logo are registered trademarks of LG Group and its related entities. All other trademarks are the property of their respective owners.
- Google™, Google Maps™, Gmail™, Google Talk™ and Android Market™ are trademarks of Google, Inc.



Contents

Guidelines for safe and efficient use	6	Your Home screen	42	Google account setup ...	53
Important notice	20	Touch screen tips.....	42	Wi-Fi	54
Getting to know your phone	34	Lock your phone	43	Turning on Wi-Fi.....	54
Installing the SIM card and battery	37	Unlock screen.....	44	Connecting to Wi-Fi.....	54
Charging your phone....	38	Silent mode	44	Sharing your phone's data connection.....	55
Installing the memory card	39	Home	44	USB tethering & portable Wi-Fi hotspot settings...	56
Formatting the memory card	41	Adding widgets to your Home screen	45	To share your phone's data connection via USB	57
		Returning to recently-used applications	47	USB tethering and data sharing.....	58
		Notification drawer	47		
		Viewing the status bar ..	48		
		Onscreen keyboard	51		

To share your phone's data connection as a portable Wi-Fi hotspot ..	59	Call settings.....	64	Using Smilies.....	69
To rename or secure your portable hotspot.....	59	Contacts.....	65	Changing your message settings	70
Calls.....	62	Searching for a contact.	65	Email	71
Making a call	62	Adding a new contact...	65	Opening Email and the Accounts Screen.....	71
Calling your contacts ...	62	Favorite contacts.....	66	Composing and Sending Email.....	73
Answering and rejecting a call.....	62	Moving Contacts from your Old Device to your New Device	67	Working with Account Folders.....	74
Adjusting call volume ...	63	Messaging	68	Adding and Editing email Accounts	75
Making a second call ...	63	Messaging.....	68		
Viewing your call logs...	63	Sending a message.....	68		
		Threaded box	69		

Contents

Camera	77	Shooting a quick video	.83	Playing a song87
Getting to know the viewfinder.....	77	After shooting a video...	83	Transferring files using USB mass storage devices.....	88
Taking a quick photo ...	78	Using the advanced settings	84	How to transfer music/ video files to your phone	89
Once you've taken the photo	78	Watching your saved videos	85	Sending data from your phone using Bluetooth..	90
Using the advanced settings	79	Adjusting the volume when viewing a video ...	85	Utilities	92
Viewing your saved photos.....	81	Multimedia	86	Setting your alarm.....	92
Video camera	82	Preloaded App	86	Using your calculator....	92
Getting to know the viewfinder.....	82	Gallery.....	86	Adding an event to your calendar	93
		View mode	86		
		Timeline view.....	86		
		Music.....	87		

Changing your calendar view	94	Settings	100	Connectivity	112
Voice recorder	94	Wireless & networks...	100	Date & time	112
Recording a sound or voice	94	Call settings.....	101	About phone	113
Sending the voice recording.....	95	Sound	103	Software update	114
Polaris Office	95	Display	105	Phone software update	114
App Manager	96	Location & security	105	DivX Mobile	116
The Web	97	Applications.....	106	Accessories	118
Browser.....	97	Accounts & sync	107	Technical data	119
Using the web toolbar...	97	Privacy	108	Troubleshooting	120
Using options.....	98	Storage	109		
		Language & keyboard.	109		
		Voice input & output...	109		
		Accessibility.....	112		

Guidelines for safe and efficient use

Please read these simple guidelines. Not following these guidelines may be dangerous or illegal.

Exposure to radio frequency energy

Radio wave exposure and Specific Absorption Rate (SAR) information. This mobile phone model LG-E400f has been designed to comply with applicable safety requirements for exposure to radio waves. These requirements are based on scientific guidelines that include safety margins designed to assure the safety of all persons,

regardless of age and health.

- The radio wave exposure guidelines employ a unit of measurement known as the Specific Absorption Rate, or SAR. Tests for SAR are conducted using standardised methods with the phone transmitting at its highest certified power level in all used frequency bands.
- While there may be differences between the SAR levels of various LG phone models, they are all designed to meet the relevant guidelines for exposure to radio waves.

- The SAR limit recommended by the International Commission on Non-Ionizing Radiation Protection (ICNIRP) is 2W/kg averaged over 10g of tissue.
- The highest SAR value for this model phone tested by DAS4 for use at the head/ear is 1.210 W/kg (10 g) and when worn on the body is 1.100 W/kg(10 g).
- This device meets RF exposure guidelines when used either in the normal use position against the ear or when positioned at least 1.5 cm away from the body. When a carry case, belt clip or holder is used for

body-worn operation, it should not contain metal and should position the product at least 1.5 cm away from your body. In order to transmit data files or messages, this device requires a quality connection to the network. In some cases, transmission of data files or messages may be delayed until such a connection is available. Ensure the above separation distance instructions are followed until the transmission is completed.

Guidelines for safe and efficient use

Product care and maintenance

WARNING

Only use batteries, chargers and accessories approved for use with this particular phone model. The use of any other types may void any approval or warranty applying to the phone, and may be dangerous.

- Do not disassemble this unit. Take it to a qualified service technician when repair work is required.
- Repairs under warranty, at LG's option, may include replacement parts or boards that are either new or reconditioned, provided that they have equivalent functionality equal to that of the parts being replaced.
- Keep away from electrical appliances such as TVs, radios, and personal computers.
- The unit should be kept away from heat sources such as radiators or cookers.
- Do not drop the phone.
- Do not subject this unit to mechanical vibration or shock.

- Switch off the phone in any area where you are required by specific regulations. For example, do not use your phone in hospitals as it may affect sensitive medical equipment.
- Do not handle the phone with wet hands while it is being charged. It may cause an electric shock which could cause injury or damage your phone
- Do not charge a handset near flammable material as the handset can become hot and create a fire hazard.
- Use a dry cloth to clean the exterior of the unit (do not use solvents such as benzene, thinner or alcohol).
- Do not charge the phone when it is on soft furnishings.
- The phone should be charged in a well ventilated area.
- Do not subject this unit to excessive smoke or dust.
- Do not keep the phone next to credit cards or transport tickets; it can affect the information on the magnetic strips.

Guidelines for safe and efficient use

- Do not tap the screen with a sharp object as it may damage the phone.
- Do not expose the phone to liquid or moisture.
- Use the accessories like earphones cautiously. Do not touch the antenna unnecessarily.
- Do not use, touch or attempt to remove or fix broken, chipped or cracked glass. Damage to the glass display due to abuse or misuse is not covered under the warranty.
- Your phone is an electronic device that generates heat during normal operation. Extremely prolonged, direct skin contact in the absence of adequate ventilation may result in discomfort or minor burns. Therefore, use care when handling your phone during or immediately after operation.

Efficient phone operation

Electronic devices

All mobile phones may get interference, which could affect performance.

- Do not use your mobile phone near medical equipment without requesting permission. Avoid placing the phone over pacemakers.
- Your mobile phone may cause interference with some hearing aids.
- Minor interference may affect TVs, radios, PCs, etc.

Road safety

- Do not use a hand-held phone while driving.
- Give full attention to driving.
- Use a hands-free kit.
- Pull off the road and park before making or answering a call if driving conditions allow you to do so.
- RF energy may affect some electronic systems in your vehicle such as car stereos and safety equipment.
- If your vehicle is equipped with an airbag, ensure it is not obstructed by your mobile

Guidelines for safe and efficient use

device or accessories. It may fail or cause a serious injury if obstructed when deployed.

- If you are listening to music whilst out and about, please ensure that the volume is at a reasonable level so that you are aware of your surroundings. This is particularly important when near roads.

Avoid damage to your hearing

Damage to your hearing can occur if you are exposed to loud sound for long periods of time. Therefore we recommend not to turn the phone on or off while holding

the handset close to your ear. We also recommend that music and call volumes are set to a reasonable level.

- When using headphones, turn the volume down if you cannot hear the people speaking near you, or if the person sitting next to you can hear what you are listening to.

NOTE: Excessive sound pressure from earphones can cause hearing loss.

Glass Parts

Some parts of your mobile device are made of glass. This glass could break if your mobile device is dropped on a hard surface or receives substantial impact. If the glass breaks, do not touch or attempt to remove. Stop using your mobile device until the glass is replaced by an authorized service provider.

Blasting area

Do not use the phone where blasting is in progress. Observe restrictions, and follow any regulations or rules.

Potentially explosive atmospheres

- Do not use the phone at a petrol station.
- Do not use the phone near fuel or chemicals.
- Do not transport or store flammable gas, liquid, or explosives in the same compartment of your vehicle as your mobile phone and accessories.

Guidelines for safe and efficient use

In aircraft

Wireless devices can cause interference in aircraft.

- Turn your mobile phone off before boarding any aircraft.
- Do not use the phone on the ground without permission from the crew.

Children

Keep the phone in a safe place out of the reach of small children. It includes small parts which may cause a choking hazard if detached.

Emergency calls

Emergency calls may not be available under all mobile networks. It is possible to originate emergency calls using the phone if there is a mobile network coverage present and emergency calls will not be possible if there is no mobile network coverage present. Therefore, you should never depend solely on the phone for emergency calls.

Use your mobile phone to call emergency services for yourself or others in the case of fire, traffic accident or medical emergencies;

- Australia Dial (0-0-0)
- New Zealand Dial (1-1-1)
- International Dial (1-1-2)
- other local emergency number.

Remember, it is a free call when dialling emergency services from your mobile phone in Australia.

Battery information and care

- You do not need to completely discharge the battery before recharging. Unlike older batteries, there is no memory effect that could compromise the battery's performance.
- Use only LG batteries and chargers. LG chargers are designed to maximize the battery life.
- Do not disassemble or short-circuit the battery.
- Keep the metal contacts of the battery clean.

Guidelines for safe and efficient use

- Replace the battery when it no longer provides acceptable performance.
- Recharge the battery if it has not been used for a long time to maximize usability.
- Do not expose the battery charger to direct sunlight or use it in high humidity, such as in the bathroom.
- Do not leave the battery in hot or cold places, this may deteriorate the battery performance.
- Replacing with an incorrect battery increases the chance of explosion.
- Dispose of used batteries in accordance with your local council regulations. Please recycle when possible. Do not dispose as household waste.
- If you need to replace the battery, take it to the nearest authorized LG Electronics service point or dealer for assistance.
- Always unplug the charger from the wall socket after the phone is fully charged to prevent unnecessary power consumption of the charger.
- Actual battery life will depend on network configuration, product settings, usage

patterns, battery and environmental conditions.

- Make sure that no sharp-edged items such as animal's teeth or nails, come into contact with the battery. This could cause a fire.

Driver Safety Tips

Your mobile telephone gives you the powerful ability to communicate almost anywhere, anytime. But an important responsibility accompanies the benefits of mobile phones, one that every user must uphold.

When driving a car, driving is your first responsibility. When using your mobile phone behind the wheel of a car, practice good common sense and remember the following tips:

- Use a hands-free kit with the device to add an additional layer of convenience and safety to your wireless phone with one of the many hands free accessories available today.
- Let the person you are speaking with know you are driving; if necessary, disconnect the call in heavy traffic or hazardous

Guidelines for safe and efficient use

- weather conditions. Rain, sleet, snow, ice and even heavy traffic can be hazardous.
- Do not take or write notes or look up phone numbers while driving. Typing up a “to do” list or flipping through your address book takes attention away from your primary responsibility of driving safely.
 - Place calls when you are not moving or before pulling into traffic. Try to plan calls when you will not be driving.
 - Do not engage in stressful or emotional conversations that may be distracting. Make people you are talking with aware you are driving and suspend conversations
- that have the potential to divert your attention from the road.
- Use your mobile phone to call emergency services for yourself or others in the case of fire, traffic accident or medical emergencies;
 - Australia Dial (0-0-0)
 - New Zealand Dial (1-1-1)
 - International Dial (1-1-2)
 - other local emergency number.Remember, it is a free call when dialling emergency services from your mobile phone in Australia.

- Use your mobile phone to help others in emergencies. If you see an auto accident, crime in progress or other serious emergency where lives are in danger, call the emergency number, as you would want others to do for you.
- If you see a broken down vehicle posing no serious hazard, a broken traffic signal, a minor traffic accident where no one appears injured, or a vehicle you know to be stolen, call roadside assistance, local traffic authority or police station.

DECLARATION OF CONFORMITY

Hereby, **LG Electronics** declares that this **LG-E400f** product is in compliance with the essential requirements and other relevant provisions of Directive **1999/5/EC**. A copy of the Declaration of Conformity can be found at **<http://www.lg.com/global/support/cedoc/RetrieveProductCeDOC.jsp>**

Important notice

Please check to see whether any problems you encountered with your phone are described in this section before taking the phone in for service or calling a service representative.

1. Phone memory

When available space in your phone memory is less than 10%, your phone cannot receive new messages. You need to check your phone memory and delete some data, such as applications or messages, to make more memory available.

Managing applications

- 1 In the Home screen, touch the **Applications** tab, then select **Settings > Applications > Manage applications**.
- 2 Once all applications appear, scroll to and select the application you want to uninstall.
- 3 Tap **Uninstall**, then touch **OK** to uninstall the application you selected.

2. Optimising battery life

Extend your battery's life between charges by turning off features you don't need to run constantly in the background. You can monitor how applications and system resources consume battery power.

Extending your battery's life

- Turn off radio communications you are not using. If you are not using Wi-Fi, Bluetooth or GPS, turn them off.
- Reduce screen brightness and set a shorter screen timeout.

- Turn off automatic syncing for Gmail, Calendar, Contacts and other applications.
- Some applications you have downloaded may cause your battery life to be reduced.

Checking the battery charge level

- 1 In the Home screen, touch the **Applications** tab, then select **Settings > About phone > Status**.
- 2 The battery status (Charging, Not charging) and level (percentage charged) is displayed at the top of the screen.

Important notice

Monitoring and controlling what uses the battery

- 1 In the Home screen, touch the **Applications** tab, then select **Settings > About phone > Battery use**.
- 2 Battery usage time is displayed at the top of the screen. It tells you how long it has been since you last connected to a power source or, if connected to a power source, how long you were last running on battery power. The body of the screen lists applications or services using battery power, from greatest amount to least.

3. Installing an open source operating system

If you install and use an open source operating system (OS) on your phone rather than using the OS provided by the manufacturer, your phone may malfunction.

 **WARNING**

If you install and use an OS other than the one provided by the manufacturer, your phone is no longer covered by the warranty.

 **WARNING**

To protect your phone and personal data, only download applications from trusted sources, such as Android Market. If there are improperly installed applications on your phone, your phone may not work normally or a serious error may occur. You must uninstall those applications and all their data and settings from the phone.

4. Using unlock pattern

Set unlock pattern to secure your phone. This opens a set of screens that guide you through how to draw a screen unlock pattern.

Caution: Create a Google account before setting an unlock pattern.

Important notice

 **WARNING**

Precautions to take when using pattern lock.

It is very important to remember the unlock pattern you set. You will not be able to access your phone if you use an incorrect pattern 5 times. You have 5 opportunities to enter your unlock pattern, PIN or password. If you have used all 5 opportunities, you can try again after 30 seconds.

When you can't recall your unlock Pattern, PIN, or Password:

If you have forgotten pattern: If you logged in to your Google account on the phone but failed to enter the correct pattern 5 times, tap the Forgot pattern button. You are then required to log in with your Google account to unlock your phone.

If you have not created a Google account on the phone or you forgot it, you have to perform a Hard reset.

If you have forgotten PIN or Password: If you forgot your PIN or Password, you need to do Hard reset.

Caution: If you perform a hard reset, all user applications and user data are deleted.

5. Using the hard reset

If it does not restore to the original condition, use hard reset to initialise your phone. When the phone is turned off, press and hold the **Home** key + **Volume down** key + **Power** key for over ten seconds. When the screen shows the LG logo, release the **Power** key.

After the screen shows the hard reset screen, release the other keys.

Leave your phone for at least a minute while it performs the hard reset, then your phone will be turned on.

Caution: If you perform a hard reset, all user applications and user data are deleted. This cannot be reversed. Remember to back up any important data before performing a hard reset.

Important notice

6. Connecting to Wi-Fi networks

To use Wi-Fi on your phone, you need to access a wireless access point or “hotspot.” Some access points are open and you can simply connect to them. Others are hidden or use security features; you must configure your phone to be able to connect to them.

Turn off Wi-Fi when you're not using it to extend the life of your battery.

Turning Wi-Fi on and connecting to a Wi-Fi network

- 1 In the Home screen, touch the **Applications** tab, then select **Settings > Wireless & networks > Wi-Fi settings**.
- 2 Touch **Wi-Fi** to turn it on and begin scanning for available Wi-Fi networks.
 - A list of available Wi-Fi networks is displayed. Secured networks are indicated by a lock icon.
- 3 Touch a network to connect to it.

- If the network is open, you are asked to confirm that you want to connect to that network by touching **Connect**.
 - If the network is secure, you're asked to enter a password or other credentials. (Ask your network administrator for details)
- 4** The status bar displays icons that indicate Wi-Fi status.

7. Opening and switching applications

Multitasking is easy with Android because you can keep more than one application running at the same time. There's no need to quit an application before opening another. Use and switch between several open applications. Android manages each application, stopping and starting them as needed to ensure that idle applications don't consume resources unnecessarily.

Important notice

Stopping applications

- 1 In the Home screen, touch the **Applications** tab, then select **Settings** > **Applications** > **Manage applications** > select **Running**.
- 2 Scroll to the desired application and touch **Stop** to stop it.

TIP! To return to recent applications, press and hold the Home key. The screen then displays a list of the applications you used recently.

8. Installing PC software (LG PC Suite)

“LG PC Suite” PC application is a program that helps you connect your device to a PC via a USB cable and Wi-Fi. Once connected, you can use the functions of your device from your PC.

With your “LG PC Suite” PC application, you can...

- Manage and play your media contents (music, movie, pictures) on your PC.
- Send multimedia contents to your device.

- Synchronises data (schedules, contacts, bookmarks) in your device and PC.
- Backup the applications in your device.
- Update the softwares in your device.
- Backup and restore the device.
- Play multimedia contents of your PC from other device.

NOTE: You can use the Help menu from the application to find out how to use your “LG PC Suite” PC application.

Installing “LG PC Suite” PC application

“LG PC Suite” PC application can be downloaded from the webpage of LG.

- 1** Go to www.lg.com and select a country of your choice.
- 2** Go to **Support > Mobile Phone Support >** Select the Model (LG-E400f).
- 3** Click **PC Sync** from **Download**, and click **WINDOW PC Sync Download** to download “LG PC Suite” PC software.

Important notice

System requirements for “LG PC Suite” PC software

- OS: Windows XP 32 bit(Service pack 2), Windows Vista 32 bit/64 bit, Windows 7 32 bit/64 bit
- CPU: 1GHz or higher processors
- Memory: 512MB or higher RAMs
- Graphic card: 1024 x 768 resolution, 32 bit color or higher
- HDD: 100 MB or more free hard disk space (More free hard disk space may be needed depending on the volume of data stored.)

- Required software: LG integrated drivers.

NOTE

LG Integrated USB Driver

LG integrated USB driver is required to connect an LG device and PC and installed automatically when you install “LG PC Suite” PC software.

9. Synchronising your phone to a Computer

Data of your device and PC can be synchronised easily with “LG PC Suite” PC application for your convenience. Contacts, schedules, and bookmarks can be synchronised.

The procedure is as follows:

- 1 Connect your device to PC. (Use a USB cable or Wi-Fi connection.)
- 2 After connection, run the program and select the device section from the category on the left side of the screen.

- 3 Click [Personal information] to select.
- 4 Select the checkbox of contents to synchronise and click the Sync button.

10. Transferring music, photos and videos using USB mass storage devices

- 1 In the Home screen, touch the **Applications** tab, then select **Settings > Storage** to check out the storage media. (If you want to transfer files from or to a memory card, insert a memory card into the phone.)

Important notice

- 2 Connect the phone to your PC using the USB cable.
- 3 USB connection mode list will appear, and select **USB storage** option.
- 4 Open the removable memory folder on your PC. You can view the mass storage content on your PC and transfer the files.
- 5 Copy the files from your PC to the drive folder.
- 6 When you are finished, select “Charge only” option to disconnect the phone.

11. Hold your phone straight up

Hold your mobile phone straight up, as you would a regular phone. The LG-E400f has an internal antenna. Be careful not to scratch or damage the back of the phone, as that causes loss of performance.

While making/receiving calls or sending/receiving data, avoid holding the lower part of the phone where the antenna is located. Doing so may affect call quality.

12. When the screen freezes

If the screen freezes or the phone does not respond when you try to operate it:

Remove the battery, reinsert it, then turn the phone on. If it still does not work, please contact the service centre.

13. Do not connect your phone when you turn on/off your PC.

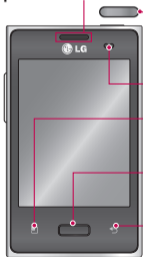
Make sure you disconnect the data cable between your phone and PC; leaving it connected might cause errors on your PC.

Getting to know your phone

To turn on your phone, press and hold the Power key for 3 seconds.

To turn off the phone, press and hold the Power key for 3 seconds, then touch **Power off** and **OK**.

Speaker/Receiver



Power/Lock key

Switch your phone on/off by pressing and holding this key.

Turn off and lock the screen.

Proximity sensor

Menu key 

Check what options are available.

Home key 

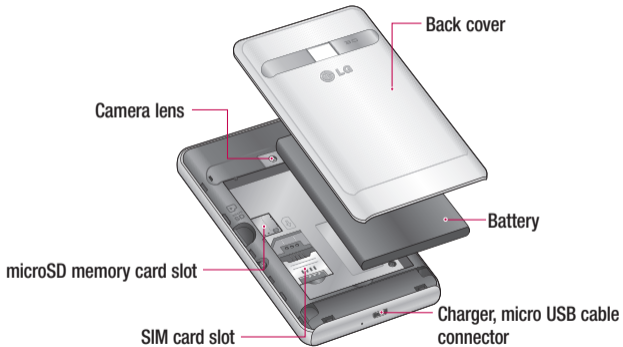
Return to home from any screen.

Back key 

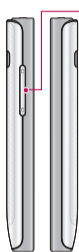
Return to the previous screen.

NOTE: Proximity sensor

When receiving and making calls, the proximity sensor automatically turns the backlight off and locks the touch keypad by sensing when the phone is near your ear. This extends battery life and prevents the touch keypad from activating unintentionally during calls.



Getting to know your phone



Volume keys

- **On the home screen:** control ringer volume.
- **During a call:** control your In-Call volume.
- **When playing a track:** control volume continuously.

Stereo earphone connector



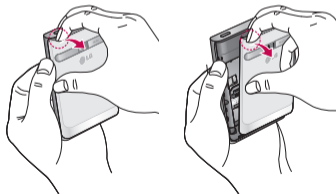
Power/Lock key

WARNING

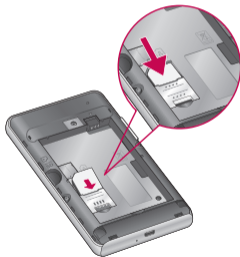
Placing a heavy object on the phone or sitting on it can damage its LCD and touch screen functions. Do not cover the protective film on the LCD's proximity sensor. This may cause the sensor to malfunction.

Installing the SIM card and battery

- 1 To remove the back cover, hold the phone in your hand firmly. With the other hand, firmly press your thumb on the back cover. Now lift off the back cover.



- 2 Slide the SIM card into the SIM card slot. Make sure the gold contact area on the card is facing downwards.

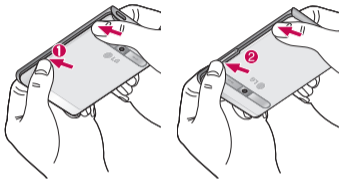


Getting to know your phone


- 3** Insert the battery by aligning the gold contacts on the phone and the battery.



- 4** Replace the back cover of the phone.



Charging your phone

Insert the charger, then plug it into an electrical outlet. Your LG-E400f must be charged before you see .



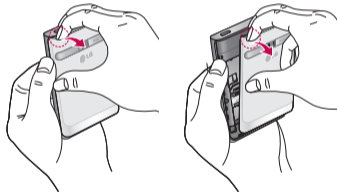
NOTE: The battery must be fully charged initially to improve battery lifetime.

Installing the memory card

NOTE: The LG-E400f supports memory cards up to 32 GB.

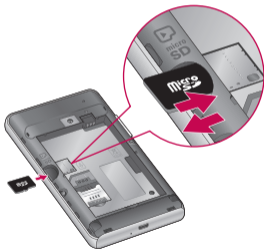
To insert a memory card:

- 1 Turn the phone off before inserting or removing a memory card. Remove the back cover.



Getting to know your phone

- 2 Insert the memory card into the slot.
Make sure the gold contact area is facing downwards.



Removing a memory card

Carefully remove the memory card out of the slot.

WARNING

Do not insert or remove the memory card when the phone is on. Doing so may damage the memory card as well as your phone, and the data stored on the memory card may be corrupted.

Formatting the memory card

Your memory card may already be formatted. If it isn't, you must format it before you can use it.

NOTE: All files on the card are deleted when you format the card.

- 1 In the Home screen, touch the **Applications** tab to open the applications menu.
- 2 Scroll to and touch **Settings > Storage**.
- 3 Touch **Unmount SD card** and touch **OK** to confirm.

- 4 Touch **Erase SD card**, then confirm your choice.
- 5 If you have set a pattern lock, input the pattern lock then select **Erase everything**. The card is then formatted and ready to use.

NOTE: If there is content on your memory card, the folder structure may be different after formatting since all the files will be deleted.

Your Home screen

Touch screen tips

Here are some tips on how to navigate around your phone.

Touch – To choose a menu/option or open an application, touch it.

Touch and hold – To open an options menu or grab an object you want to move, touch and hold it.

Drag – To scroll through a list or move slowly, drag across the touch screen.

Flick – To scroll through a list or move quickly, flick across the touch screen (drag quickly and release).

NOTE:

- To select an item, touch the centre of the icon.
- Do not press too hard; the touch screen is sensitive enough to pick up a light, firm touch.
- Use the tip of your finger to touch the option you want. Be careful not to touch any other keys.

Lock your phone

When you are not using the LG-E400f, press the power key to lock your phone. This helps prevent accidental presses and saves battery power.

Also, if you do not use the phone for a while, the Home screen or another screen you are viewing is replaced with the lock screen to conserve battery power.

If there are any programs running when you set the pattern, they may be still running in Lock mode. It is recommended that you exit all programs before entering the

Lock mode to avoid unnecessary charges (e.g. phone calls, Web access and data communications).

Setting an unlock pattern: you can draw your own unlock pattern by connecting the dots.

If you set a pattern, the phone screen locks. To unlock the phone, draw the pattern that you set on the screen.

Caution: When you set an unlock pattern, you need to create your Gmail account first.

Caution: If there are more than 5 pattern drawing errors in a row, you cannot unlock



Your Home screen

the phone. In this case, refer to the point-4 under the Important Notice.

Unlock screen

Whenever your LG-E400f is not in use, it returns to the lock screen. Drag your finger from bottom to top to unlock the screen.

Silent mode

In the notification drawer, touch  to change  mode.

Home

Simply swipe your finger to the left or right to view the panels.

You can customise each panel with widgets, shortcuts (to your favourite applications), folders and wallpaper.


NOTE: Some screen images may be different depending on your phone provider.

In your Home screen, you can view quick keys at the bottom of the screen. Quick keys provide easy, one-touch access to the functions you use the most.

 Touch the **Phone** icon to bring up the touch screen dialpad to make a call.

 Touch the **Contacts** icon to open your contacts.

 Touch the **Messaging** icon to access the messaging menu. This is where you can create a new message.

 Touch the **Applications** tab at the bottom of the screen. You can then view all your installed applications.

To open the desired application, simply touch the icon in the applications list.

NOTE: Preloaded applications may differ according to your phone's software or your service provider.

Adding widgets to your Home screen

You can customise your Home screen by adding shortcuts, widgets or folders to it. For more convenience using your phone, add your favourite widgets to the Home screen.

- 1 In the Home screen, touch the **Menu** key and select **Add**. Or touch and hold the empty part of the home screen.

Your Home screen

- 2 In the **Add to Home screen** menu, touch the type of item you want to add.
- 3 For example, select **Folders** from the list and tap it.
- 4 You then see a new folder icon on the Home screen. Drag it to the desired location on the desired panel, then take your finger off the screen.

TIP! To add an application icon to the Home screen from the **Applications** menu, touch and hold the application you want to add.

TIP! To remove an application icon from the Home screen, touch and hold the icon you want to remove, then drag it to



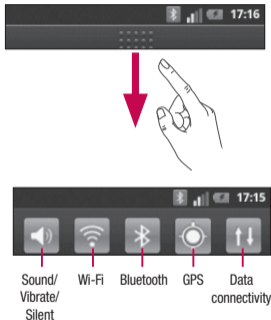
NOTE: You cannot delete preloaded applications. (Only their icons can be deleted from the screen.)

Returning to recently-used applications

- 1 Press and hold the **Home** key. The screen displays a pop-up with icons of applications you used recently.
- 2 Touch an icon to open the application. Or touch the **Back** key to return to the current application.

Notification drawer

The notification drawer runs across the top of your screen.



Your Home screen

Touch and slide the notification drawer down with your finger.

Or, in the Home screen, touch the **Menu** key and select **Notifications**. Here you can check and manage sound, Wi-Fi, Bluetooth and GPS as well as other notifications.






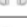

Viewing the status bar

The status bar uses different icons to display phone information such as signal strength, new messages, battery life and active Bluetooth and data connections.







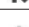
Below is a table explaining the meaning of icons you're likely to see in the status bar.










[Status bar]

Icon	Description
	No SIM card
	No signal
	Airplane mode
	Connected to a Wi-Fi network
	Wired headset
	Call in progress
	Call hold


Icon	Description
	Speakerphone
	Phone microphone is muted
	Missed call
	Bluetooth is on
	Connected to a Bluetooth device
	System warning
	Alarm is set

Icon	Description
	New voicemail
	Ringer is silenced
	Vibrate mode
	Battery fully charged
	Battery is charging
	Data in and out
	Phone is connected to PC via USB cable

Your Home screen

Icon	Description
	Downloading data
	Uploading data
	GPS is acquiring
	Receiving location data from GPS
	3 more notifications not displayed
	Data is syncing
	Download finished

Icon	Description
	New Gmail
	New Google Talk message
	New message
	Song is playing
	Upcoming event
	USB tethering is active
	Portable Wi-Fi hotspot is active



Icon	Description
	Both USB tethering and portable hotspot are active


Onscreen keyboard

You can enter text using the onscreen keyboard. The onscreen keyboard appears automatically on the screen when you need to enter text. To manually display the keyboard, simply touch a text field where you want to enter text.

Using the keypad & entering text

 Tap once to capitalise the next letter you type. Double tap for all caps.

  Tap to switch to the numeric and symbol keyboard. You can also touch and hold this tab to view the Settings menu.

 Tap to insert an emoticon when writing a message.

 Tap to enter a space.

 Tap to create a new line in the message field.

 Tap to delete the previous character.

 Tap to hide the onscreen keyboard.

Entering accented letters

When you select French or Spanish as the text entry language, you can enter special French or Spanish characters (e.g. “á”).

Your Home screen

For example, to input "á", touch and hold the "a" key until the zoom-in key grows bigger and displays characters from different languages. Then select the special character you want.

Google account setup

When you first turn on your phone, you have the opportunity to activate the network, to sign into your Google account and how you want to use some Google services.

To set up your Google account :

* Sign into a Google account from the prompted set up screen.

OR

* **Applications** > select a Google application, such as **Gmail** > select **Next** > select **Create** to create a new account.

If you have a Google account, enter your e-mail address and password, then touch **Sign in**.

Once you have set up your Google account on your phone, your phone automatically synchronises with your Google account on the Web.

Your contacts, Gmail messages, calendar events and other information from these applications and services on the web are synchronised with your phone. (This depends on your synchronisation settings.)

After signing in, you can use Gmail and take advantage of Google services on your phone.

Wi-Fi

With Wi-Fi, you can use high-speed Internet access within the coverage of the wireless access point (AP).

Enjoy wireless Internet using Wi-Fi, without extra charges.

Turning on Wi-Fi

In the Home screen, open the notification drawer and touch .

Or touch **Application** > **Settings** > **Wireless & networks**, then **Wi-Fi** .

Connecting to Wi-Fi

Choose the Wi-Fi network you want to connect to. If you see , you need to enter a password to connect.

NOTE:

- If you are outside the Wi-Fi coverage area and choose 3G connection, additional charges may apply.
- If your phone goes into sleep mode when connected to Wi-Fi, the Wi-Fi connection is automatically disabled.
- In this case, if your phone has access to 3G data, it may connect to the 3G network

automatically and additional charges may apply.




- The LG-E400f supports WEP, WPA/WPA2-PSK and 802.1x EAP security. If your Wi-Fi service provider or network administrator sets encryption for network security, enter the key into the pop-up window. If encryption is not set, this pop-up window is not shown. Obtain the key from your Wi-Fi service provider or network administrator.

Sharing your phone's data connection

You can share your phone's mobile data connection with a single computer via a USB cable (USB tethering). You can also share your phone's data connection with up to five devices at a time by turning your phone into a portable Wi-Fi hotspot.

When your phone is sharing its data connection, an icon appears in the status bar and as an ongoing notification in the notifications drawer.

Wi-Fi

Icon	Description
	USB tethering is active
	Portable Wi-Fi hotspot is active
	Both USB tethering and portable hotspot are active

For the latest information about tethering and portable hotspots, including supported operating systems and other details, visit <http://www.android.com/tether>.

NOTE: Additional costs may be incurred when connecting and using online services. Check data charges with your network provider.

USB tethering & portable Wi-Fi hotspot settings

- 1 In the Home screen, touch the **Applications** tab and select **Settings**.
- 2 Touch **Wireless & networks** and select **Tethering & portable hotspot**.
- 3 Choose options that you want to adjust.

USB tethering – Tick to share your phone's mobile network data connection with your computer via a USB connection.

Portable Wi-Fi hotspot – Tick to share your phone's mobile network data connection as Wi-Fi sharing.

Help – Opens a dialog with information about USB tethering and portable Wi-Fi hotspots as well as information on where to learn more.

To share your phone's data connection via USB

If your computer is running Windows 7 or a recent distribution of some flavours of Linux (such as Ubuntu), you don't usually need to prepare your computer for tethering. But if you're running an earlier version of Windows or another operating system, you may need to prepare your computer to establish a network connection via USB. For the most current information about which operating systems support USB tethering and how to configure them, visit <http://www.android.com/tether>.

Wi-Fi


USB tethering and data sharing

You can't share your phone's data connection and microSD card via USB at the same time. If you are using your USB connection to make your microSD card available to your computer, you must disconnect it first.

- 1 Use the USB cable that came with your phone to connect your phone to your computer.
- 2 In the Home screen, touch the **Applications** tab and select **Settings**.

- 3 Touch **Wireless & networks** and select **Tethering & portable hotspot**.

- 4 Tick **USB tethering**.

- The phone starts sharing its mobile network data connection with your computer via the USB connection. An ongoing notification  is added to the status bar and notifications drawer.
- 5 Deselect **USB tethering** to stop sharing your data connection. Or just disconnect the USB cable.

To share your phone's data connection as a portable Wi-Fi hotspot

- 1 In the Home screen, touch the **Applications** tab and select **Settings**.
- 2 Touch **Wireless & networks** and select **Tethering & portable hotspot**.
- 3 Tick **Portable Wi-Fi hotspot**.
 - After a moment, the phone starts broadcasting its Wi-Fi network name (SSID) so you can connect to it with up to eight computers or other devices. An ongoing notification  is added to the status bar and notifications drawer.

- When **Portable Wi-Fi hotspot** is ticked, you can change its network name or secure it.
- 4 Deselect **Portable Wi-Fi hotspot** to stop sharing your data connection via Wi-Fi.

To rename or secure your portable hotspot

You can change the name of your phone's Wi-Fi network name (SSID) and secure its Wi-Fi network.

- 1 In the Home screen, touch the **Applications** tab and select **Settings**.

Wi-Fi

- 2 Touch **Wireless & networks** and select **Tethering & portable hotspot**.
- 3 Ensure **Portable Wi-Fi hotspot** is ticked.
- 4 Touch **Portable Wi-Fi hotspot settings**.
- 5 Touch **Configure Wi-Fi hotspot**.
 - The **Configure Wi-Fi hotspot** dialog opens.
 - You can change the network SSID (name) that other computers see when scanning for Wi-Fi networks.
 - You can also touch the **Security** menu to configure the network with Wi-Fi Protected

Access 2 (WPA2) security, with a pre-shared key (PSK).

- If you touch the **WPA2 PSK** security option, a password field is added to the **Configure Wi-Fi hotspot** dialog. If you enter a password, you will need to enter that password when you connect to the phone's hotspot with a computer or other device. Or touch **Open** in the **Security** menu to remove security from your Wi-Fi network.

ATTENTION!





If you set the security option as **Open**, you cannot prevent unauthorised usage of online services by other people and additional charges can be incurred.

To avoid unauthorised usage, you are advised to keep the security option active.

6 Touch Save.


Calls

Making a call



- 1 Touch  to open the keypad.
- 2 Enter the number using the keypad. To delete a digit, touch the **Clear** icon .
- 3 Touch the **Call** icon  to make a call.
- 4 To end a call, touch the **End** icon .

TIP! To enter “+” to make international calls, touch and hold .

Calling your contacts

- 1 Touch  to open your contacts.
- 2 Scroll through the contact list or enter the first letter(s) of the contact you want to call by touching **Search**.
- 3 In the list, touch the contact which you want to call and tap on the number or call icon to make call.



Answering and rejecting a call


When the screen is locked and your phone rings, drag the **Answer** icon  to the right. Drag the **Decline** icon  to the left to reject an incoming call.

Adjusting call volume

To adjust the in-call volume during a call, use the Volume Up and Down key on the left side of the phone.

Making a second call

- 1 During your initial call, tap .
- 2 Dial the number, or search your contacts.
- 3 Touch the **Call** icon  to connect the call.
- 4 Both calls are displayed on the call screen. Your initial call is locked and put on hold.

- 5 Touch the displayed number to toggle between calls. Or touch  **Merge calls** to make a conference call.

- 6 To end active calls, touch **End**.

NOTE: You are charged for each call you make.

Viewing your call logs

In the Home screen, touch  and choose the **Call log** tab.

View a complete list of all dialled, received and missed voice calls.

Calls

TIP! Touch any call log entry to view the date, time and duration of the call.

TIP! Touch the **Menu** key, then touch **Delete all** to delete all the recorded items.

Call settings

You can configure phone call settings such as call forwarding and other special features offered by your carrier.


- 1 In the Home screen, touch the **Applications** tab to open the applications menu.
- 2 Scroll and touch **Settings**.
- 3 Tap **Call settings** and choose the options that you want to adjust.

Contacts




Add contacts to your phone and synchronise them with the contacts in your Google account or other accounts that support contact syncing.

Searching for a contact

In the Home screen

- 1 Touch  to open your contacts.
- 2 Touch **Search** and enter the contact name using the keyboard.

Adding a new contact


- 1 Touch , enter the new contact's number, then touch the **Menu** key. Touch **Add to contacts** and then **Create new contact**.
- 2 If you want to add a picture to the new contact, touch . Choose from **Capture picture** or **Pick from Gallery**.
- 3 Select the contact type by touching .
- 4 Touch a category of contact information and enter the details about your contact.
- 5 Touch **Save**.

Contacts


Favorite contacts

You can classify frequently called contacts as favorites.

Adding a contact to your favorites

- 1 Touch  to open your contacts.
- 2 Touch a contact to view its details.
- 3 Touch the star to the right of the contact's name. The star turns gold.

Removing a contact from your favorites list

- 1 Touch  to open your contacts.
- 2 Touch the **Groups** tab, select **Favorites** at the top of the list and choose a contact to view its details.
- 3 Touch the gold star to the right of the contact's name. The star turns grey and the contact is removed from your favourites.

Moving Contacts from your Old Device to your New Device

Export your contacts as a CSV file from your old device to your PC using a PC sync program.


- 1 Install “LG PC Suite” PC application on the PC. Run the program and connect your device to the PC using a USB cable.
- 2 From the top of the screen, select **Device > Import personal information > Import contacts**.
- 3 A pop-up to open a contacts file will appear.
- 4 Select a contacts file and click **Open**.
- 5 A pop-up to import a new contact from PC to the contacts in the device will appear.
- 6 If the contacts in the device and new contacts from PC are different, select a contact you want to import from PC.
- 7 Click the [OK] button to import a new contact from PC to the device.

Messaging

Messaging

Your LG-E400f combines SMS and MMS into one intuitive, easy-to-use menu.

Sending a message

- 1 Touch  icon on the home screen, and touch **New message** to open a blank message.
- 2 Enter a contact name or contact number in the **To** field. As you enter the contact name, matching contacts appear. You can touch a suggested recipient. You can add multiple contacts.

NOTE: You will be charged for a text message for every person you send the message to.

- 3 Touch **Enter message** field and start to compose your message.
- 4 Touch the **Menu** key to open the options menu. Choose from **Call, View contact, Add subject, Discard, Reply by** and **More**.
- 5 Touch **Send** to send your message.
- 6 The message screen opens, with your message after Recipient Name/Number. Responses appear on the screen. As you view and send additional messages, a message thread is created.

 **WARNING**

The 160-character limit may vary from country to country depending on how the SMS is coded and in what language.

 **WARNING**

If an image, video or audio file is added to an SMS, it will be automatically converted into an MMS , and you will be charged accordingly.

NOTE: When you get an SMS message during a call, there will be a ring notification.

Threaded box

Messages (SMS, MMS) exchanged with another party can be displayed in chronological order so that you can conveniently see an overview of your conversation.

Using Smilies

Liven up your messages using Smilies. When writing a new message, touch the **Menu** key, then choose **More > Insert smiley**.

Messaging

Changing your message settings

Your LG-E400f message settings are predefined, so you can send messages immediately. You can change the settings based on your preferences.

 **WARNING**

In this mode, the MMS Client device guides the user in creating and sending messages with content belonging to the Core MM Content Domain. This guidance is provided through warning dialogs.

Email

Opening Email and the Accounts Screen

You can use the **Email** application to read email from services other than Google Mail. The Email application supports the following account types: POP3, IMAP and Exchange.

Managing an email account

In the Home screen, touch **Downloads** > **Email**, then select the Email Service Provider.

A setup wizard opens to help you add an email account. After the initial setup, Email displays the contents of your Inbox (if you

have only one account) or the Accounts screen (if you have multiple accounts).

The Accounts screen


The Accounts screen lists your Combined Inbox and each of your email accounts.

- 1 Open the **Email** application. If you're not on the Account screen, touch the **Menu Key** and touch **Accounts**.
- 2 Select the Email service provider.



- Touch to open your Combined Inbox, with messages received to all of your accounts.

Email

 - Touch to open a list of just your starred messages.

 - Touch the folder icon to open the account's folders.

You can touch an account to view its Inbox. The account from which you send email by default is indicated with a tick.

To open your Combined Inbox

If you have configured Email to send and receive email from more than one account, you can view all messages sent to all accounts in your Combined Inbox.


1 Touch **Email**.

2 Touch **Combined inbox** (in the Accounts screen). Messages in the Combined Inbox are colour coded along their left sides, by account, using the same colours that are used for your accounts in the Accounts screen.

Only your account's most recent emails are downloaded to your phone. To download more (earlier) email messages, touch **Load more messages** at the bottom of the emails list.

Composing and Sending Email

To compose and send a message

- 1 While in the **Email** application, touch the **Menu** key and touch **Compose**.
- 2 Enter an address for the message's intended recipient. As you enter text, matching addresses are offered from your Contacts. Separate multiple addresses with commas.
- 3 Touch the **Menu** key and then touch **Add Cc/Bcc** to send copy or blind copy of the mail to other contacts/email addresses.
- 4 Enter the text of the message.
- 5 Touch the **Menu** key and touch **Add attachment** to send a file with the message.
- 6 Touch the **Send** button.
If you're not ready to send the message, touch the **Save as draft** button to save it in a **Drafts** folder. Touch a draft message in a **Drafts** folder to resume working on it. Your message will also be saved as a draft if you touch the **Back** key  before sending it. Touch the **Discard** button to abandon and delete a message, including any saved drafts. If you aren't

Email

connected to a network, for example, if you're working in airplane mode, the messages that you send are stored in your **Outbox** folder until you're connected to a network again. If it contains any pending messages, the **Outbox** is displayed on the Accounts screen.

Please note that messages sent using an Exchange account will not be located on the phone; they will, however, be located on the Exchange server itself.

If you want to see your sent messages in the **Sent** folder, then touch the **Menu** key and

touch on **Folders** then touch on **Sent** folder and select **Refresh** from the options menu.

TIP! When a new email arrives in the inbox, you will receive a notification by sound or vibration.

Working with Account Folders

Each account has **Inbox**, **Outbox**, **Sent**, and **Drafts** folders. Depending on the features supported by your account's service provider, you may have additional folders.

Adding and Editing email Accounts

- 1 To add an email account, touch the **Applications** tab and select **Email**.
- 2 Select **MS Exchange** or **Others**, and enter account settings.
- 3 If an email account is already set up, you need to touch the **Menu** key then tap **Add account** from Accounts screen.
- 4 Enter a name for the account, confirm how you want your name to appear in outgoing mail, then touch the **Done** button.

To change an account's settings

- 1 Open the Accounts screen.
- 2 Touch and hold the account whose settings you want to change. In the menu that opens, touch **Account settings**.

To delete an email account

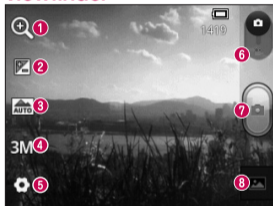
- 1 Open the Accounts screen.
- 2 Touch and hold the account you want to delete.
- 3 Touch **Remove account** in the menu that opens.

Email

- 4 Touch the **OK** button in the dialog box to confirm that you want to delete the account.

Camera


Getting to know the viewfinder



- 1 Zoom** - Zoom in or zoom out. Alternatively you can use the side volume keys.
- 2 Brightness** - This defines and controls the amount of sunlight entering the image. Slide the brightness indicator along the bar towards "-" to lower the brightness of the image or towards "+" to increase it.
- 3 Scene mode** - Choose from **Auto**, **Portrait**, **Landscape**, **Sports**, **Sunset** and **Night**.
- 4 Image size** - Touch to set the size (in pixels) of the picture you take.
- 5 Settings** - Touch this icon to open the advanced settings menu.
- 6 Video mode** - Slide this icon down to switch to video mode.
- 7 Taking a photo**
- 8 Gallery** - Touch to view the last photo you captured. This enables you to access your gallery and view saved photos from within camera mode.

Camera

Taking a quick photo

- 1 Open the **Camera** application.
- 2 Hold the phone horizontally and point the lens towards the subject you want to photograph.
- 3 Touch the capture  button.

Once you've taken the photo

Your captured photo appears on the screen.

Share




Touch to share your photo using **Bluetooth, Email, Gmail, Google+, Messaging** and **Picasa**.

Set as

Touch to use the image as a **Contact icon** or **Wallpaper**.

Rename

Touch to edit the name of the picture just taken.

-  Touch to delete the image.
-  Touch to take another photo immediately. Your current photo is saved.
-  Touch to view the last photo you captured as well as the gallery.

Using the advanced settings

In the viewfinder, touch  to open all advanced options.

Change camera settings by scrolling through the list. After selecting the option, touch the **Back** key.

ISO – The ISO rating determines the sensitivity of the camera's light sensor. The higher the ISO, the more sensitive the camera is. This is useful in darker conditions when you cannot use the flash.

White balance – Choose from **Auto**, **Incandescent**, **Sunny**, **Fluorescent** and **Cloudy**.

Color effect – Choose a colour tone for your new photo.

Timer – The self-timer allows you to set a delay after the capture button is pressed. Select **Off**, **3 secs.**, **5 sec** or **10 secs**. This is ideal if you want to be in the photo.

Camera



Shutter sound – Select one of four shutter sounds.

Auto review – If you turn **Auto review** on, it automatically shows you the picture you just took.

Tag location – Activate to use your phone's location-based services. Take pictures wherever you are and tag them with the location. If you upload tagged pictures to a blog that supports geotagging, you can see the pictures displayed on a map.

NOTE: This function is only available when GPS is active.

Storage – Choose whether to save your photos to the phone memory or to the external memory.

-  – Restore all camera default settings.
-  – Touch whenever you want to know how this function operates. This provides you with a quick guide.

TIP! When you exit the camera, some settings return to their defaults, such as white balance, color effect and timer . Check these before you take your next photo.

TIP! The Settings menu is superimposed over the viewfinder, so when you change elements of the image colour or quality, you see a preview of the image change behind the Settings menu.

Viewing your saved photos

Access your saved photos while in **Camera** mode. Just touch  and touch the screen. You then see **Slideshow** and **Menu**.

TIP! Flick left or right to view other photos or videos.



- Touch to see a slideshow.



- Touch to share the contents or delete a photo. Touch **More** for more options.

Details – Check information on the content.

Show on map

Set as – Set as a contact icon or wallpaper.

Crop – Crop your photo. Move your finger across the screen to select the area.

Rotate Left / Rotate Right – Rotate left or right.



Video camera

Getting to know the viewfinder



- 1 Zoom** - Zoom in or zoom out. Alternatively you can use the side volume keys.
- 2 Brightness** - This defines and controls the amount of sunlight entering the video. Slide the brightness indicator along the bar towards "-" to lower the brightness of the video or towards "+" to increase it.
- 3 Video size** - Touch to set the size (in pixels) of the video you record.
- 4 Audio recording** - Choose Mute to record a video without sound.
- 5 Settings** - Touch this icon to open the advanced settings menu.
- 6 Camera mode** - Slide this icon up to switch to camera mode.
- 7 Start recording**
- 8 Gallery** - Touch to view the last video you recorded. This enables you to access your gallery and view your saved videos from within video mode.

Shooting a quick video

- 1 Slide the **Camera** mode button down and the icon changes to .
- 2 The video camera viewfinder appears on the screen.
- 3 Holding the phone horizontally, point the lens towards the subject you want to capture in your video.
- 4 Touch the Record  button once to start recording.
- 5 REC appears at the bottom of the viewfinder with a timer showing the length of the video.

- 6 Touch  on the screen to stop recording.

After shooting a video

A still image representing your video will appear on the screen.

Play

Touch to play the video.




Share

Touch to share your video using **Bluetooth, Email, Gmail, Messaging** and **YouTube**.

Rename

Touch to edit the name of the selected video.

Video camera

-  Touch to delete the video you just made. Confirm by touching "**Confirm Delete**". The viewfinder reappears.
-  Touch to shoot another video right away. Your current video is saved.
-  Touch to view the last recorded video as well as the gallery.

Using the advanced settings

Using the viewfinder, touch  to open all the advanced options.

Adjust the video camera setting by scrolling through the list. After selecting the option, touch the **Back** key.


White balance – White balance ensures that the white areas in your video are realistic. To enable your camera to adjust the white balance correctly, you may need to determine the light conditions. Choose from **Auto**, **Incandescent**, **Sunny**, **Fluorescent** and **Cloudy**.

Color effect – Choose a colour tone to use for your new view.


Auto review – Auto review automatically shows you the video you just recorded.

Storage – Choose whether to save your video clip to the phone memory or to the external memory.

 – Restore all video camera default settings.

 – Touch if you want to know how this function operates. This provides you with a quick guide.

Watching your saved videos

- 1 In the viewfinder, touch .
- 2 Your gallery appears on the screen.
- 3 Touch a video once to bring it to the front of the gallery. It starts playing automatically.

Adjusting the volume when viewing a video

To adjust the volume of a video while it is playing, use the volume keys on the left-hand side of the phone.

Multimedia

Preloaded App

There are useful applications preloaded on the **Preloaded Apps**. To use the application, you need to install the application to your phone first.

NOTE: Preloaded applications may differ according to your phone's software or your service provider.

Gallery


Touch the **Applications** tab, then select **Gallery**. Open a list of catalogue bars that store all your multimedia files.

View mode

Touch **Gallery**. Folder view is displayed.

Touch any folder and it turns to grid view mode. If you tap a photo, it changes into full view mode.


Timeline view




LG-E400f **Gallery** provides a timeline view of your photos and videos. In grid view mode, drag  to the right and the date you took your photos is displayed, starting with the most recent. If you select a specific date, all the photos you took on that day are grouped.

Music

Your LG-E400f has a built-in music player that lets you play all your favourite tracks. To access the music player, touch **Applications**, then touch **Music**.

Playing a song

- 1 In the Home screen, touch the **Applications** tab and select **Music**.
- 2 Touch **Songs**.
- 3 Select the song you want to play.
- 4 Touch  to pause the song.

- 5 Touch  to skip to the next song.
- 6 Touch  to go back to the beginning of the song. Touch  twice to return to the previous song.

To change the volume while listening to music, press the up and down volume keys on the left-hand side of the phone.

Touch and hold any song in the list. It displays **Play**, **Add to playlist**, **Use as ringtone**, **Delete**, **Details**, **Share** and **Search** as options.

Multimedia

NOTE: Music file copyrights may be protected by international treaties and national copyright laws.

Therefore, it may be necessary to obtain permission or a licence to reproduce or copy music.

In some countries, national laws prohibit private copying of copyrighted material. Before downloading or copying the file, check the national laws of the relevant country concerning the use of such material.

Transferring files using USB mass storage devices

To transfer files using USB devices

- 1 Connect the LG-E400f to a PC using a USB cable.
- 2 USB connection mode list will appear, and select USB storage option.
- 3 Open the removable memory folder on your PC. You can view the mass storage content on your PC and transfer the files.
- 4 Copy the files from your PC to the drive folder.

- 5 When you are finished, select “Charge only” option to disconnect the phone.

How to transfer music/video files to your phone

- 1 Connect your phone to the PC using the USB cable. In the Home screen, touch and drag down the notification drawer. Select **USB connection mode > USB storage**, and select **Open folder** to view files from **Removable Disk** pop up which appears in PC .
If you didn't install LG Android Platform

Driver on your PC, you must set it up manually.

For more information, refer to 'Transferring files using USB mass storage devices'.

- 2 Transfer music or video files from the PC to the phone's removable storage.
 - You can copy or move files from your PC to your phone's removable storage using a card reader.
 - If there is a video file with a subtitle file (*.srt file with the same name as the video file), place it in the same folder

Multimedia

to display subtitles automatically when playing the video file.

- When downloading music or video files, copyrights must be secured. Note that corrupted files or files with incorrect extensions may damage your phone.

Sending data from your phone using Bluetooth

Sending data using Bluetooth You can use Bluetooth to send data by running a corresponding application, not from the Bluetooth menu as on most other mobile phones.

- * **Sending pictures:** Run the Gallery application, then select **Picture > Menu**. Click **Share**, then select **Bluetooth**. Check whether Bluetooth is turned on, then select **Scan for devices**. Choose the device you want to send data to from the list.


- * **Exporting contacts:** Run the Contacts application. Touch the address you want to export to. Touch the **Menu** key and select **Share > Bluetooth**. Check whether Bluetooth is turned on, then select **Scan for devices**. Choose the device you want to send data to from the list.
- * **Sending multi-selected contacts:** Run the Contacts application. To select more than one contact touch the **Menu** key and touch **Share**. Select the contacts you want to send or touch **Select all option** from top > Select **Share > Bluetooth > Enable Bluetooth** and select Scan for devices >

Choose the device you want to send data from the list.

- * **Connecting to FTP (only FTP server is supported on this handset):** Select **Settings > Wireless & networks > Bluetooth settings**. Select the **Discoverable** box so you can search for your phone on other devices. Find the FTP service and connect to the FTP server.
- If you want to search for this phone from other devices, go to **Settings > Wireless & networks > Bluetooth settings**. Select the **Discoverable** box. The box is cleared after 120 seconds.

Utilities

Setting your alarm

- 1 In the Home screen, touch the **Applications** tab and select **Clock**.
- 2 If you want to add a new alarm, touch  and select **Add alarm**.
- 3 Set the time to turn on the alarm. After you set the time, the LG-E400f lets you know how much time is left before the alarm will sound.
- 4 Set **Repeat**, **Ringtone** or **Vibrate**, then add a label to name the alarm. Touch **Done**.

NOTE: to change alarm settings on alarm list screen, touch the **Menu** key and select **Settings**. You can adjust the below options: **Alarm in silent mode**, **Alarm volume**, **Snooze duration** and **Side button behaviour**.

Using your calculator

- 1 In the Home screen, touch the **Applications** tab and select **Calculator**.
- 2 Touch the number keys to enter numbers.
- 3 For simple calculations, touch the function you want (+, -, x or ÷) followed by =.

- 4 For more complex calculations, touch the **Menu** key, touch the **Advanced panel**, then choose sin, cos, tan, log and so on.

Adding an event to your calendar

- 1 In the Home screen, touch the **Applications** tab and select **Calendar**.
- 2 To check the event, touch the date. Touch and hold if you want to add a new event. Touch **New event**.
- 3 Touch **What** then enter the event name. Check the date and enter the time you want your event to start and finish.

- 4 Also, touch **Where** then enter the location.
- 5 If you want to add a note to your event, touch **Description** and enter the details.
- 6 If you want to repeat the alarm, set **Repetition**, and set **Reminders**, if necessary.
- 7 Touch **Done** to save the event in the calendar. A coloured square in the calendar marks all days that have saved events. An alarm sounds at the event start time to help you stay organised.

Utilities



Changing your calendar view

- 1 In the Home screen, touch the **Applications** tab and select **Calendar**. Touch the **Menu** key.
- 2 Select the calendar view for a particular day, week or month.

Voice recorder

Use the voice recorder to record voice memos or other audio files.

Recording a sound or voice

- 1 In the Home screen, touch the **Applications** tab and select **Voice Recorder**.
 - 2 Touch  to begin recording.
 - 3 Touch  to end the recording.
 - 4 Touch  to listen to the recording.
- NOTE:** touch  to access your album. You can listen to the saved recording.
- Notice:** the available recording time may differ from the real time.

Sending the voice recording

- 1 Once you have finished recording, you can send the audio clip by touching **Menu > Share**.
- 2 Choose between **Bluetooth** and **Gmail**. When you select **Gmail**, the voice recording is added to the message, then you write and send the message normally.

Polaris Office

Polaris Office is a professional mobile office solution that lets users conveniently view various types of office documents, including Word, Excel and PowerPoint files, anywhere, anytime, using their mobile devices.

Managing files

Polaris Office provides mobile users with convenient file management features, including copying, pasting, renaming and deleting files and folders right on the device.

Utilities

Viewing files

Mobile users can now easily view a wide variety of file types, including Microsoft Office documents and Adobe PDF, right on their mobile devices. When viewing documents using Polaris Office, the objects and layout remain the same as in their original documents.

App Manager

You can manage your applications with App Manager. You can easily check the number of currently running applications and shut

down applications. You can also uninstall the applications you have installed on your device.

The Web

Browser

Browser gives you a fast, full-colour world of games, music, news, sport, entertainment and much more, right on your mobile phone. Wherever you are and whatever you enjoy.

NOTE: additional charges apply when connecting to these services and downloading content. Check data charges with your network provider.

Using the web toolbar



Touch to go backwards one page.



Touch to go forwards one page to the one you connected to after the current page. This is the opposite of what happens when you touch the **Back** key, which goes to the previous page.



Touch to show all your open windows.



Touch to add a new window



Add/show bookmark and show **Most visited**, **Read it later** and **History**.

The Web

Using options

Touch the **Menu** key to view options.

 **Read it later** – Add the current web page in read it later.

 **Add RSS feed** – Add the current web page to the RSS feed.

 **Share page** – Allows you to share the web page with others.

 **Find on page** – Allows you to find letters or words on the current web page.

 **Select text** – Allows you to copy any text from the web page.

 **More**

- **Home page:** Go to the Home page.
- **Set home page:** Set the current web page as your Home page.
- **Add shortcut to home:** Add the shortcut of the current web page to the Home screen.
- **Page info:** Displays the web page information.

- **Downloads:** Displays your download history.
- **Settings:** Change web browser settings.

TIP! To return to the previous web page, touch the **Back** key.

Settings

In the Home screen, touch the **Applications** tab then scroll to and touch **Settings**.

Wireless & networks

Here, you can manage Wi-Fi and Bluetooth. You can also set up mobile networks and switch to airplane mode.

Airplane mode – After switching to airplane mode, all wireless connections are disabled.

Wi-Fi – Touch to select: This turns on Wi-Fi to connect to available Wi-Fi networks.

Wi-Fi settings – Allows you to set up and manage wireless access points. Set network notification, or add a Wi-Fi network. The

advanced Wi-Fi settings screen is accessed from the Wi-Fi settings screen. Touch the **Menu** key and touch **Advanced**.

TIP! How to obtain the MAC address

To set up a connection in some wireless networks with MAC filters, you may need to enter the MAC address of your LG-E400f into the router.

You can find the MAC address in the following user interface: Touch **Applications > Settings > Wireless & networks > Wi-Fi settings**, and touch the **Menu** key. Then select **Advanced > MAC Address**.

Bluetooth – Touch to select: This turns on Bluetooth to connect to Bluetooth devices.

Bluetooth settings – Set device name & discoverable mode, scan for other devices. Or, check a list of Bluetooth devices that you've previously configured and those detected when the phone last scanned for Bluetooth devices.

Tethering & portable hotspot – You can configure the USB tethering and portable Wi-Fi hotspot settings.

VPN settings – Displays the list of Virtual Private Networks (VPNs) that you've previously configured. Allows you to add different types of VPN.

Mobile networks – Set options for data roaming, network mode & operators, access point names (APNs) and so on.

Call settings

< **Fixed dialing numbers** >

Select **Fixed dialing numbers** to turn on and compile a list of numbers that can be called from your phone. You'll need your

Settings

PIN2, which is available from your operator. Only numbers within the fixed dial list can be called from your phone.

< Voicemail >

Voicemail service – Allows you to select your carrier's voicemail service.

Voicemail settings – If you are using your carrier's voicemail service, this option allows you to enter the phone number to use for listening to and managing your voicemail.

< Other call settings >

Excuse messages – When you want to reject a call, you can send a quick message

using this function. This is useful if you need to reject a call during a meeting.

Call forwarding – Choose whether to divert all calls, when the line is busy, when there is no answer or when you have no signal.

Call barring – Select when you would like calls to be barred. Enter the call barring password. Please check with your network operator about this service.

Call reject – Allows you to set the call reject function. Choose from **Off**, **Reject on list** or **Reject all calls**.

Call costs – View the charges applied to your calls. (This service is network dependent; some operators do not support this function)

Call duration – View the duration of calls including last call, all calls, dialled calls and received calls.

Additional settings – This lets you change the following settings:

Caller ID: Choose whether to display your number on an outgoing call. (This service is network dependent; some operators do not support this function)

Call waiting: If call waiting is activated, the handset will notify you of an incoming call while you are on another call (depending on your network provider).

Sound

< General >

Silent mode – Allows you to mute all sounds (including call and notification ringtones) except the audio from music and videos and any alarms you have set. You must mute media and alarm sounds in their own applications.

Settings

Vibrate – Allows you to set your phone to vibrate when you receive an incoming call.

Volume – Allows you to set the volume for ringtones, media and alarms. If you deselect the option to use the incoming call volume for notifications, you can set the volume for incoming calls and notifications separately.

< Incoming calls >

Phone ringtone – Allows you to set your default incoming call ringtone.

< Notifications >

Notification ringtone – Allows you to set your default notification ringtone.

< Feedback >

Audible touch tones – Allows you to set the phone to play tones when using the dialpad to dial numbers.

Audible selection – Allows you to set your phone to play a sound when you touch buttons, icons and other onscreen items that react to your touch.

Screen lock sounds – Allows you to set your phone to play a sound when locking and unlocking the screen.

Display

Brightness – Adjust the screen brightness.

Auto-rotate screen – Set to switch orientation automatically when you rotate the phone.

Animation – Set to display an animation.

Screen timeout – Set the time for screen timeout.

Location & security

Use wireless networks – If you select **Use wireless networks**, your phone determines your approximate location using Wi-Fi and

mobile networks. When you select this option, you're asked whether you consent to allowing Google to use your location when providing these services.

Use GPS satellites – If you select **Use GPS satellites**, your phone determines your location to street level accuracy.

Set up screen lock – Set an unlock pattern to secure your phone. Opens a set of screens that guide you through drawing a screen unlock pattern. You can set a **PIN** or **password** instead of a **pattern** or leave it as **None**.

Settings

When you turn on your phone or wake up the screen, you're asked to draw your unlock pattern to unlock the screen.

Set up SIM card lock – Set up SIM card lock or change the SIM PIN.

Visible passwords – Select to show passwords as you type them or deselect to hide passwords as you type them.

Select device administrators – Add one or more administrators.

Use secure credentials – Allows you to access secure certificates.

Install from SD card – Choose to install encrypted certificates from your SD card.

Set password – Set or change the credential storage password.

Clear storage – Clear credentials for all content and reset password.

Applications

You can manage applications and set up quick launch shortcuts.

Unknown sources – Default setting to install non-Market applications.

Manage applications – Manage and remove installed applications.

Running services – Check services that are currently running.

Storage use – View storage used by applications.

Battery usage – See what has been using the battery.

Development – Set options for application development.

Accounts & sync

< General sync settings >

Background data – Permits applications to synchronise data in the background, whether or not you are actively working in them. Deselecting this setting can save battery power and lowers (but does not eliminate) data usage.

Auto-sync – Permits applications to synchronise, send and receive data to their own schedule.

Settings

< Manage accounts >

List of all Google accounts and other accounts you've added to your phone.

If you touch an account in this screen, its account screen opens.

Privacy

Change the settings for managing your settings and data.

- **Back up my data:** Set to back up your settings and application data to the Google server.

- **Automatic restore:** Set to restore your settings and application data when the applications are reinstalled on your device.
- **Factory data reset:** Reset your settings to the factory default values and delete all your data. If you reset the phone in this way, you are prompted to reenter the same information as when you first started Android.

Storage

< Internal memory >

Check total available internal memory space. Touch **Erase internal memory** if you want to delete all data from the internal memory.

< SD card >

Check total available SD card space. Touch **Unmount SD card** for safe removal. **Erase SD card** if you want to delete all data from the SD card.

< System memory >

Checks the available space.

Language & keyboard

Set local language and region as well as keyboard settings.

Voice input & output

< Voice input >

Voice recogniser settings – Use the **Voice recogniser settings** to configure the Android voice input feature.

Settings

- **Language:** Opens a screen where you can set the language you use for speech to enter text.
- **SafeSearch:** Opens a dialog where you can set whether you want the Google SafeSearch filter to block some results.
- **Block offensive words:** When deselected, Google voice recognition will recognise and transcribe words many people consider offensive, when you use speech to enter text. When selected, Google voice recognition replaces those words in transcriptions with a placeholder comprised of star symbols (*).

< Voice output >

Text-to-speech settings – Use the **Text-to-speech settings** to configure the Android text-to-speech synthesiser for applications that can use this feature.

NOTE: if you don't have speech synthesiser data installed, only the **Install voice data setting** is available.

- **Listen to an example:** Plays a brief sample of the speech synthesiser, using your current settings.
- **Always use my settings:** Tick to use the settings on this screen in place of speech

synthesiser settings available in other applications.

- **Default Engine:** Opens a dialog where you can set the text-to-speech application you want to use, if you have more than one installed.
- **Install voice data:** If your phone does not have speech synthesiser data installed, this connects to Android Market and guides you through the process of downloading and installing the data. This setting is not available if the data is already installed.
- **Speech rate:** Opens a dialog where you can select how quickly you want the synthesiser to speak.
- **Language:** Opens a dialog where you can select the language of the text you want the synthesiser to read. This is particularly useful in combination with **Always use my settings** to ensure that text is spoken correctly in a variety of applications.
- **Pico TTS:** Configure the **Pico TTS settings**.

Settings

Accessibility

Use the **Accessibility** settings to configure accessibility plug-ins you have installed on your phone.

NOTE: requires additional plug-ins.

Connectivity

Default connection mode – You can set the desired mode (**Charge only**, **USB storage**, **PC software** and **USB tethering**).

Always ask – Checkmark this if you don't want to see USB connection mode popup whenever USB cable is connected.

Wi-Fi connection – Checkmark this to use LG PC Suite with Wi-Fi connection.

Please note that Wi-Fi network should be connected for LG PC Suite via Wi-Fi connection in Wireless & networks settings.

Date & time

Use **Date & time** settings to set your preference for how dates are displayed. You can also use these settings to set your own time and time zone rather than obtaining the current time from the mobile network.

About phone

View legal information and check phone status and software version.

Software update

Phone software update

LG Mobile phone software update from the Internet

For more information about using this function, please visit the <http://update.lgmobile.com> or <http://www.lg.com/common/index.jsp> → select country and language.

This feature allows you to update the firmware on your phone to a newer version conveniently from the Internet without needing to visit a service centre. This feature is only available if and when LG makes the

newer version of the firmware available for your device.

As the mobile phone firmware update requires the user's full attention for the duration of the update process, please make sure you check all instructions and notes that appear at each step before proceeding. Please note that removing the USB data cable or battery during the upgrade may seriously damage your mobile phone.

NOTE: LG reserves the right to make firmware updates available only for selected models at its own discretion and does

not guarantee the availability of the newer version of the firmware for all handset models.

LG Mobile Phone software update via Over-the-Air (OTA)

This feature allows you to update the firmware of your phone to the newer version conveniently via OTA without connecting the USB data cable. This feature is only available if and when LG makes the newer version of the firmware available for your device.

First, you can check the software version on your mobile phone: **Settings > About**

phone > Software update > Check now for update.

You can also delay the update by 1 hour, 4 hours, 8 hours or 24 hours. In this case, the application will notify you to update when the time is up. You can also rearrange an update manually.

NOTE: This feature is dependent on the network service provider, region or countries.

Software update

DivX Mobile **DIVX**

ABOUT DIVX VIDEO: DivX® is a digital video format created by DivX, LLC, a subsidiary of Rovi Corporation. This is an official DivX Certified® device that plays DivX video. Visit divx.com for more information and software tools to convert your files into DivX videos.

ABOUT DIVX VIDEO-ON-DEMAND: This DivX Certified® device must be registered in order to play purchased DivX Video-on-Demand (VOD) movies. To obtain your registration code, locate the DivX VOD section in your device setup menu. Go to

vod.divx.com for more information on how to complete your registration.

DivX Certified® to play DivX® video up to 320x240.

DivX®, DivX Certified® and associated logos are trademarks of Rovi Corporation or its subsidiaries and are used under licence.

Notice:

Open Source Software

To obtain the corresponding source code under GPL, LGPL, MPL and other open source licences, please visit <http://opensource.lge.com/>

All referred licence terms, disclaimers and notices are available for download with the source code.

Accessories

These accessories are available for use with the LG-E400f. (Items described below may be optional.)

Travel adapter



Battery



Data cable

Connect your LG-E400f and PC.



User Guide

Learn more about your LG-E400f.



NOTE:

- Always use genuine LG accessories.
- Failure to do this may void your warranty.
- Accessories may vary in different regions.

Technical data

Ambient temperatures

Max: +55°C (discharging), +45°C (charging)

Min: -10°C

Troubleshooting

This chapter lists some problems you might encounter while using your phone. Some problems require you to call your service provider, but most are easy to fix yourself.

Message	Possible causes	Possible corrective measures
SIM error	There is no SIM card in the phone or it is inserted incorrectly.	Make sure that the SIM card is correctly inserted.
No network connection/ Losing network	Signal is weak or you're outside the carrier network. Operator applied new services.	Move towards a window or into an open area. Check the network operator coverage map. Check whether the SIM card is more than 6~12 months old. If so, change your SIM at your network provider's nearest branch. Contact your service provider.

Message	Possible causes	Possible corrective measures
Codes do not match	To change a security code, you will need to confirm the new code by re-entering it. The two codes you have entered do not match.	If you forget the code, contact your service provider.
Any application cannot be set	Not supported by service provider or registration required.	Contact your service provider.
Calls not available	Dialling error New SIM card inserted. Pre-paid charge limit reached.	New network not authorised. Check for new restrictions. Contact service provider or reset limit with PIN2.

Troubleshooting

Message	Possible causes	Possible corrective measures
Phone cannot be switched on	On/Off key pressed too briefly. Battery is not charged. Battery contacts are dirty.	Press the On/Off key down for at least two seconds. Charge battery. Check charging indicator on the display. Clean the battery contacts.
Charging error	Battery is not charged. Outside temperature is too hot or cold. Contact problem No voltage Charger defective Wrong charger Battery defective	Charge battery. Make sure phone is charging at a normal temperature. Check the charger and connection to the phone. Check the battery contacts and clean them if necessary. Plug the charger into a different socket. If the charger does not warm up, replace it. Only use original LG accessories. Replace battery.

Message	Possible causes	Possible corrective measures
Number not permitted	The Fixed dialling number function is on.	Check the Settings menu and turn the function off.
Impossible to receive / send SMS & picture	Memory full	Delete some messages from the phone.
Files not opening	Unsupported file format	Check the file formats that can be supported.
SD card not working	FAT16, FAT32 file system supported	Check SD card file system via card reader, or format SD card using the phone.

Troubleshooting

Message	Possible causes	Possible corrective measures
The screen does not turn on when I receive a call.	Proximity sensor problem	If you use any protection tape or case, check to see if it has covered the area around the proximity sensor. Make sure that the area around the proximity sensor is clean.
No sound	Vibration mode	Check the settings status of the sound menu to make sure you are not in vibrate or silent mode.
Hang up or freeze	Intermittent software problem	Remove the battery, insert it again and switch on the phone. Try to perform a software update via the website.

Message	Possible causes	Possible corrective measures
Phone locked and does not function.	Temporary software error	<ol style="list-style-type: none">1. Turn the phone off.2. Remove the back cover.3. Remove the battery and reinstall it.4. Close the back cover.5. Turn the phone on again.

