



LG-T375 User Guide - English

P/N: MFL67481621(11)

Some of the contents in this manual may differ from your phone depending on the software of the phone or your service provider.

Disposal of your old appliance

1 When this crossed-out wheeled bin symbol is attached to a product it means the product is covered by the European Directive 2002/96/EC.

2 All electrical and electronic products should be disposed of separately from the municipal waste stream via designated collection facilities appointed by the government or the local authorities.

3 The correct disposal of your old appliance will help prevent potential negative consequences for the environment and human health.

4 For more detailed information about disposal of your old appliance, please contact your city office, waste disposal service or the shop where you purchased the product.

Disposal of waste batteries/accumulators

1 When this crossed-out wheeled bin symbol is attached to batteries/accumulators of your product it means they are covered by the European Directive 2006/66/EC.

2 This symbol may be combined with chemical symbols for mercury(Hg), cadmium(Cd) or lead(Pb) if the battery contains more than 0.0005% of mercury, 0.002% of cadmium or 0.004% of lead.

3 All batteries/accumulators should be disposed separately from the municipal waste stream via designated collection facilities appointed by the government or the local authorities.

4 The correct disposal of your old battery/accumulators will help to prevent potential negative consequences for the environment, animal and human health.

5 For more detailed information about disposal of your old batteries/accumulators, please contact your city office, waste disposal service or the shop where you purchased the product.



www.lg.com

Using your touch screen

Touch screen tips

- To select an item, touch the centre of the icon.
- Do not press too hard. The touch screen is sensitive enough to pick up a light, firm touch.
- Use the tip of your finger to touch the option you require. Be careful not to touch any other keys.
- Whenever your LG-T375 is not in use, it will return to the lock screen.

Calls

Making a Call

- Touch to open the keypad.
- Key in the number using the keypad.
- Touch to initiate the call.

NOTE: To make a call from SIM2 touch the forward arrow mark on icon.

TIP! To enter + for making an international call, press and hold "0".

NOTE: Self call - Self call imitates a real incoming call. Press "#*" on the Dialpad to make a self call. This doesn't charge any fee.

Contacts

Searching for a contact

- Touch **Contacts**.
- You see a list of contacts. Typing in the first letter of a contact's name in the Search field will jump the menu to that alphabetical area of the list.

Messaging

Your LG-T375 combines SMS and MMS into one intuitive and easy-to-use menu.

Sending a message

- Touch **Messages** in menu and touch **Write message** to begin composing a new message.
- Touch **Insert** to add an image, video, sound, template and so on.
- Touch **To** at the top of the screen to enter the recipients, then enter the number or touch to select a contact. You can even add multiple contacts.

a greater range than Bluetooth wireless technology. It allows fast emailing and Internet browsing.

Software update

Phone Software update

LG Mobile Phone Software update fro m internet

For more information on using this function, please visit the <http://update.lgmobile.com> or <http://www.lg.com/common/index.jsp> → select country and language → Support. This Feature allows you to update the firmware of your phone to the latest version conveniently from the internet without the need to visit a service centre. As the mobile phone firmware update requires the user's full attention for the duration of the update process, please make sure to check all instructions and notes that appear at each step before proceeding. Please note that removing the USB data cable or battery during the upgrade may seriously damage your mobile phone.

Guidelines for safe and efficient use

Please read these simple guidelines. Not following these guidelines may be dangerous or illegal.

Blasting area

Do not use the phone where blasting is in progress. Observe restrictions, and follow any regulations or rules.

Potentially explosive atmospheres

- Do not use the phone at a refueling point.
- Do not use near fuel or chemicals.
- Do not transport or store flammable gas, liquid, or explosives in the same compartment of your vehicle as your mobile phone and accessories.

In aircraft

Wireless devices can cause interference in aircraft.

- Turn your mobile phone off before boarding any aircraft.
- Do not use it on the aircraft without permission from the crew.

Children

Keep the phone in a safe place out of the reach of small children. It includes small parts which may cause a choking hazard if detached.

Emergency calls

Emergency calls may not be available with all mobile networks. Therefore, you should never depend solely on the phone for emergency calls. Check with your local service provider.

Installing the SIM card and the handset battery

Installing the SIM Card

When you subscribe to a cellular network, you are provided with a plug-in SIM card loaded with your subscription details, such as your PIN, any optional services available and many others.

Important!

The plug-in SIM card and its contacts can be easily damaged by scratches or bending, so be careful when handling, inserting or removing the card. Keep all SIM cards out of the reach of small children.

Illustrations

Always switch the device off and disconnect the charger before removing the battery.

- Remove the back cover.
- Lift battery away.
- Insert the SIM card.
- Insert the battery pack.
- Attach the back cover.
- Charge the battery.

- Touch when ready.

NOTE: To send a message from SIM2 touch the forward arrow mark on icon.

WARNING: If an image, video, sound, New slide and so on is added to an SMS it will be automatically converted to an MMS and you will be charged accordingly.

Entering Text

You can choose your input method by tapping and **Input method**.

Touch to turn on T9 mode. This icon is only shown when you choose **Keypad** as the input method. Touch to change between numbers, symbols and text input. Use **Shift** key to change between capital or lowercase input.

Setting up your email

Touch **E-mail** from screen 2. If the email account is not set up, start the email set up wizard and finish it. You can check and edit settings also you can check the additional settings that were filled in automatically when you created the account.

Exposure to radio frequency energy

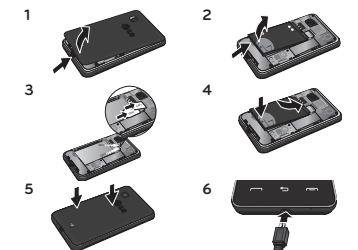
Radio wave exposure and Specific Absorption Rate (SAR) information

This mobile phone model LG-T375 has been designed to comply with applicable safety requirements for exposure to radio waves. These requirements are based on scientific guidelines that include safety margins designed to assure the safety of all users, regardless of age and health.

- The radio wave exposure guidelines employ a unit of measurement known as the Specific Absorption Rate, or SAR. Tests for SAR are conducted using standardised methods with the phone transmitting at its highest certified power level in all used frequency bands.
- While there may be differences between the SAR levels of various LG phone models, they are all designed to meet the relevant guidelines for exposure to radio waves.
- The SAR limit recommended by the International Commission on Non-Ionising Radiation Protection (ICNIRP) is 2 W/kg averaged over 10g of tissue.
- The highest SAR value for this model phone tested by DASy4 for use close to the ear is 0.698 W/kg (10g)and when worn on the body is 0.789 W/kg (10g).
- This device meets RF exposure guidelines when used either in the normal use position against the ear or when positioned at least 1.5 cm away from the body. When a carry case, belt clip or holder is used for body-worn operation, it should not contain metal and should position

Battery information and care

- You do not need to completely discharge the battery before recharging. Unlike other battery systems, there is no memory effect that could compromise the battery's performance.
- Use only LG batteries and chargers. LG chargers are designed to maximise the battery life.
- Do not disassemble or short-circuit the battery pack.
- Keep the metal contacts of the battery pack clean.
- Replace the battery when it no longer provides acceptable performance. The battery pack may be recharged hundreds of times until it needs replacing.
- Recharge the battery if it has not been used for a long time to maximise usability.
- Do not expose the battery charger to direct sunlight or use it in high humidity, such as in the bathroom.
- Do not leave the battery in hot or cold places, this may deteriorate the battery performance.
- There is a risk of explosion if the battery is replaced by an incorrect type.
- Dispose of used batteries according to the manufacturer's instructions. Please recycle when possible. Do not dispose as household waste.
- If you need to replace the battery, take it to the nearest authorised LG Electronics service point or dealer for assistance.



NOTE: Proximity sensor
When receiving and making calls, the proximity sensor automatically turns the backlight off and locks the touch screen by sensing when the phone is near your ear. This extends battery life and prevents you from unintentionally activating the touch screen during calls.

Camera

Taking a quick photo

- Touch **Camera** menu.
- When the camera has focused on your subject, touch the on the right-center of the screen to take a photo.

Video camera

Making a quick video

- To switch to the camera mode or video mode, slide up/down the camera or video icon on the right centre of the viewfinder.
- Holding the phone horizontally, point the lens towards the subject of the video.
- Press the red dot .
- REC** will appear at the bottom of the viewfinder with a timer at the bottom showing the length of the video.
- To pause the video, touch and resume by selecting .
- Touch on screen to stop video recording.

the product at least 1.5 cm away from your body. In order to transmit data files or messages, this device requires a quality connection to the network. In some cases, transmission of data files or messages may be delayed until such a connection is available. Ensure the above separation distance instructions are followed until the transmission is completed.

Product care and maintenance

WARNING: Only use batteries, chargers and accessories approved for use with this particular phone model. The use of any other types may invalidate any approval or warranty applying to the phone, and may be dangerous.

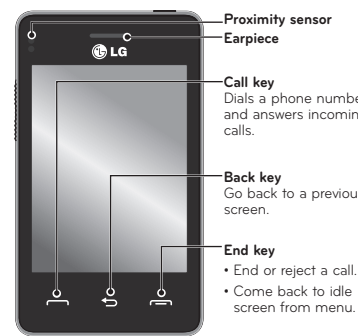
- Do not disassemble this unit. Take it to a qualified service technician when repair work is required.
- Repairs under warranty, at LG's option, may include replacement parts or boards that are either new or reconditioned, provided that they have functionality equal to that of the parts being replaced.
- Keep away from electrical appliances such as TVs, radios, and personal computers.
- The unit should be kept away from heat sources such as radiators or cookers.
- Do not drop the phone.

Always unplug the charger from the wall socket after the phone is fully charged to save unnecessary power consumption of the charger.
Actual battery life will depend on network configuration, product settings, usage patterns, battery and environmental conditions.
Make sure that no sharp-edged items such as animal's teeth or nails, come into contact with the battery. This could cause a fire.

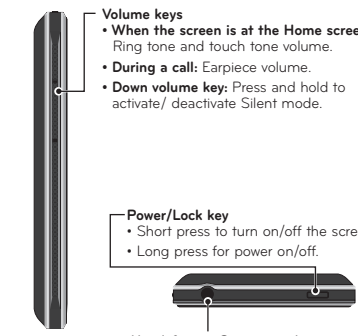
This equipment may be operated in all European countries.
The WLAN can be operated in the EU without restriction indoors, but cannot be operated outdoors in France, Russia and Ukraine.

Wi-Fi (WLAN)

Phone Components



Warning: Do not cover the LCD proximity sensor with protective film. This could cause the sensor to malfunction.



Music

To access the music player, touch **Music**. From here, you can access a number of folders:

Managing files

You can store multimedia files in your phone's memory so you have easy access to all your images, sounds, videos, documents and other content. You can also save your files to a memory card. Using a memory card allows you to free up space in your phone's memory.

By touching **My stuff**, you can open a list of the folders that store all your multimedia files.

PC Suite

You can synchronise your PC with your phone to make sure all your important details and dates match. You can also backup your files to put your mind at ease.

Installing "LG PC Suite IV" PC application

"LG PC Suite IV" PC application can be downloaded from the webpage of LG.

- Go to www.lg.com and select a country of your choice.
- Go to Support > Mobile Phone Support > Select the Model (LG-T375).

- Do not subject this unit to mechanical vibration or shock.
- Switch off the phone in any area where you are required by specific regulations. For example, do not use your phone in hospitals as it may affect sensitive medical equipment.
- Do not handle the phone with wet hands while it is being charged. It may cause an electric shock and can seriously damage your phone.
- Do not charge a handset near flammable material as the handset can become hot and create a fire hazard.
- Use a dry cloth to clean the exterior of the unit (do not use solvents such as benzene, thinner or alcohol).
- Do not charge the phone when it is on soft furnishings.
- The phone should be charged in a well ventilated area.
- Do not subject this unit to excessive smoke or dust.
- Do not keep the phone next to credit cards or transport tickets; it can affect the information on the magnetic strips.
- Do not tap the screen with a sharp object as it may damage the phone.
- Do not expose the phone to liquid or moisture.
- Use the accessories like earphones cautiously. Do not touch the antenna unnecessarily.
- Do not use, touch or attempt to remove or fix broken, chipped or cracked glass. Damage to the glass display due to abuse or misuse is not covered under the warranty.

Accessories

There are various accessories for your mobile phone. You can select these options according to your personal communication requirements.

Charger



Stereo headset



Battery



User Guide



- NOTE**
- Always use genuine LG accessories.
- Failure to do this may invalidate your warranty.
- Accessories may vary in different regions.

- Click PC Sync from Download, and click WINDOW PC Sync Download to download "LG PC Suite IV" PC software.

Installing On-Screen Phone on your PC

Download OSP from www.lg.com > Support > Mobile Phone Support > Select the Model (LG-T375) >OSP.

The web

Browser gives you a fast, colourful world of games, music, news, sport, entertainment and loads more, straight to your mobile phone. Wherever you are and whatever you're into.

Dual SIM setting

You can see two Network Signal icons on the left-top of the screen when you insert two SIM-Card.

To select or switch the **SIM card**, press **Menu** and select **Dual SIM settings**.

Settings

Changing your phone settings

Use the freedom of adapting the LG-T375 to your own preferences.

Your phone is an electronic device that generates heat during normal operation. Extremely prolonged, direct skin contact in the absence of adequate ventilation may result in discomfort or minor burns. Therefore, use care when handling your phone during or immediately after operation.

Efficient phone operation

Electronic devices
All mobile phones may get interference, which could affect performance.

- Do not use your mobile phone near medical equipment without requesting permission. Avoid placing the phone over pacemakers, for example, in your breast pocket.
- Some hearing aids might be disturbed by mobile phones.
- Minor interference may affect TVs, radios, PCs, etc.

Road safety

- Check the laws and regulations on the use of mobile phones in the area when you drive.
- Do not use a hand-held phone while driving.
- Give full attention to driving.
- Pull off the road and park before making or answering a call if driving conditions so require.
- RF energy may affect some electronic systems in your vehicle such as car stereos and safety equipment.

Technical data

Ambient Temperatures

Max.: +50°C (discharging) +45°C (charging)
Min.: -10°C

DECLARATION OF CONFORMITY
Hereby, **LG Electronics** declares that this **LG-T375** product is in compliance with the essential requirements and other relevant provisions of Directive **1999/5/EC**. A copy of the Declaration of Conformity can be found at <http://www.lg.com/global/support/cedoc/RetrieveProductCeDOC.jsp>

Contact office for compliance of this product :
LG Electronics Inc.
EU Representative, Krijgsman 1,
1186 DM Amstelveen, The Netherlands