



LG

Life's Good

ENGLISH

OWNER'S MANUAL

LED TV*

* LG LED TV applies LCD screen with LED backlights.

Please read this manual carefully before operating your TV and retain it for future reference.

29MA73D
29MA73V

TABLE OF CONTENTS

3 LICENSES

4 INSTALLATION PROCEDURE

5 ASSEMBLING AND PREPARING

- 5 Unpacking
- 8 Parts and buttons
- 10 Lifting and moving the TV
- 11 Setting up the TV
 - 11 - Attaching the Stand
 - 13 - Mounting on a table
 - 13 - Tidying cables
 - 15 - Detaching the Stand
 - 16 - Mounting on a wall

18 WATCHING TV

- 18 Turning the TV on for the first time
- 20 TV display (5:9 OSD)
 - 20 - Programme Guide
- 21 PIP function

23 MAKING CONNECTIONS

- 23 Connecting an antenna
- 24 Satellite connection
- 25 Connecting to a HD receiver, DVD Player, VCR or Gaming device
 - 25 - HDMI connection
 - 26 - DVI-D connection
 - 27 - Component connection
 - 28 - Composite Connection
 - 29 - Euro Scart connection
- 30 Headphone connection
- 31 Connecting a USB Device
- 32 Smartphone (MHL) connection
- 33 Connecting to a wired network
- 34 Connecting to a PC
 - 35 - HDMI connection
 - 36 - DVI-D connection
 - 37 - Display Port connection

38 REMOTE CONTROL

40 INSTALLING SCREEN SPLIT

41 CUSTOMIZING SETTINGS

- 41 Accessing the Main Menus
 - 41 - TV, Component, AV
 - 46 - DVI, HDMI1, HDMI2/MHL, DisplayPort

53 USING THE USER GUIDE

- 53 Accessing the On-Screen User Guide

54 MAINTENANCE

- 54 Cleaning Your TV
 - 54 Screen and frame
 - 54 Cabinet and stand
 - 54 Power cord
- 55 Preventing "Image burn" or "Burn-in" on your TV screen

56 TROUBLE SHOOTING

58 SPECIFICATIONS

LICENSES

Supported licenses may differ by model. For more information of the licenses, visit www.lg.com.



Manufactured under license from Dolby Laboratories. Dolby and the double-D symbol are trademarks of Dolby Laboratories.



The terms HDMI and HDMI High-Definition Multimedia Interface, and the HDMI logo are trademarks or registered trademarks of HDMI Licensing LLC in the United States and other countries.



ABOUT DIVX VIDEO: DivX® is a digital video format created by DivX, LLC, a subsidiary of Rovi Corporation. This is an official DivX Certified® device that plays DivX video. Visit divx.com for more information and software tools to convert your files into DivX videos.

ABOUT DIVX VIDEO-ON-DEMAND: This DivX Certified® device must be registered in order to play purchased DivX Video-on-Demand (VOD) movies. To obtain your registration code, locate the DivX VOD section in your device setup menu. Go to vod.divx.com for more information on how to complete your registration.

DivX Certified® to play DivX® video up to HD 1080p, including premium content.

DivX®, DivX Certified® and associated logos are trademarks of Rovi Corporation or its subsidiaries and are used under license.

Covered by one or more of the following U.S. patents: 7,295,673; 7,460,668; 7,515,710; 7,519,274



VESA, VESA logo, Display Port Compliance Logo and Display Port Compliance Logo for dual-mode source are all registered trademarks of the Video Electronics Standards Association.

INSTALLATION PROCEDURE

- 1 Open the package and make sure all the accessories are included.
- 2 Attach the stand to the TV.
- 3 Connect an external device to the TV.

**NOTE**

- Image shown may differ from your TV.
- Your TV's OSD (On Screen Display) may differ slightly from that shown in this manual.
- The available menus and options may differ from the input source or product model that you are using.
- New features may be added to this TV in the future.

ASSEMBLING AND PREPARING

Unpacking

Check your product box for the following items. If there are any missing accessories, contact the local dealer where you purchased your product. The illustrations in this manual may differ from the actual product and accessories.



NOTE

- The accessories supplied with your product may vary depending on the model.
- Product specifications or contents in this manual may be changed without prior notice due to upgrade of product functions.



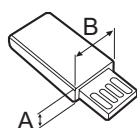
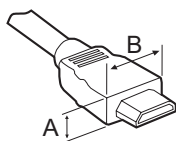
CAUTION

- Do not use any pirated items to ensure the safety and product life span.
- Any damages or injuries by using unapproved or counterfeit parts or accessories are not covered by the warranty.



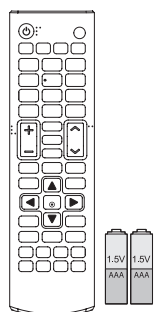
NOTE

- The items supplied with your product may vary depending on the model.
- Product specifications or contents of this manual may be changed without prior notice due to upgrade of product functions.
- For an optimal connection, HDMI cables and USB devices should have bezels less than 10 mm thick and 18 mm width. Use an extension cable that supports USB 2.0 if the USB cable or USB memory stick does not fit into your TV's USB port.



*A  10 mm

*B  18 mm

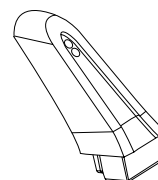


**Remote Control
Batteries (AAA)**

(See p.38, See p.39)

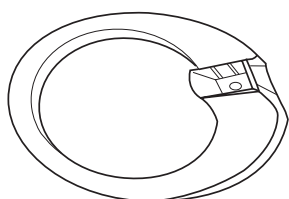


**CD (Owner's Manual)
Cards**



Stand Body

(See p.11, See p.15)



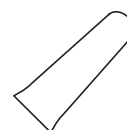
Stand Base

(See p.11, See p.15)



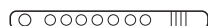
Screw 2 ea

(See p.11, See p.15)



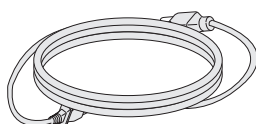
Stand Screw cover

(See p.11, See p.15)



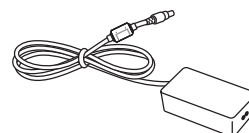
Cable Tie

(See p.13)



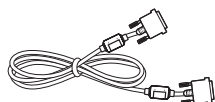
Power Cord

(See p.13)



AC-DC Adapter

(See p.13)



DVI-D cable

(See p.26, See p.36)



Isolator

(Depending on the country)



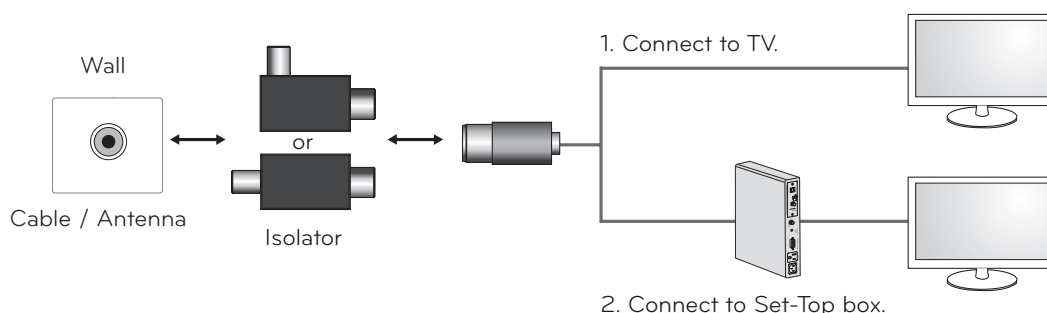
DisplayPort cable

(Depending on the country)
(See p.37)

NOTE

Antenna Isolator Installation Guide

- Use this to install TV in a place where there is a voltage difference between TV Set and GND of antenna signal.
 - » If there is a voltage difference between TV Set and GND of antenna signal, the antenna contact might be heated and excessive heat might cause an accident.
- You can improve the safety when watching TV by efficiently removing power voltage from TV antenna. It is recommended to mount the isolator to the wall. If it cannot be mounted to the wall, mount it on the TV. Avoid disconnecting the antenna Isolator after installation.
- Before starting, be sure that the TV antenna is connected.

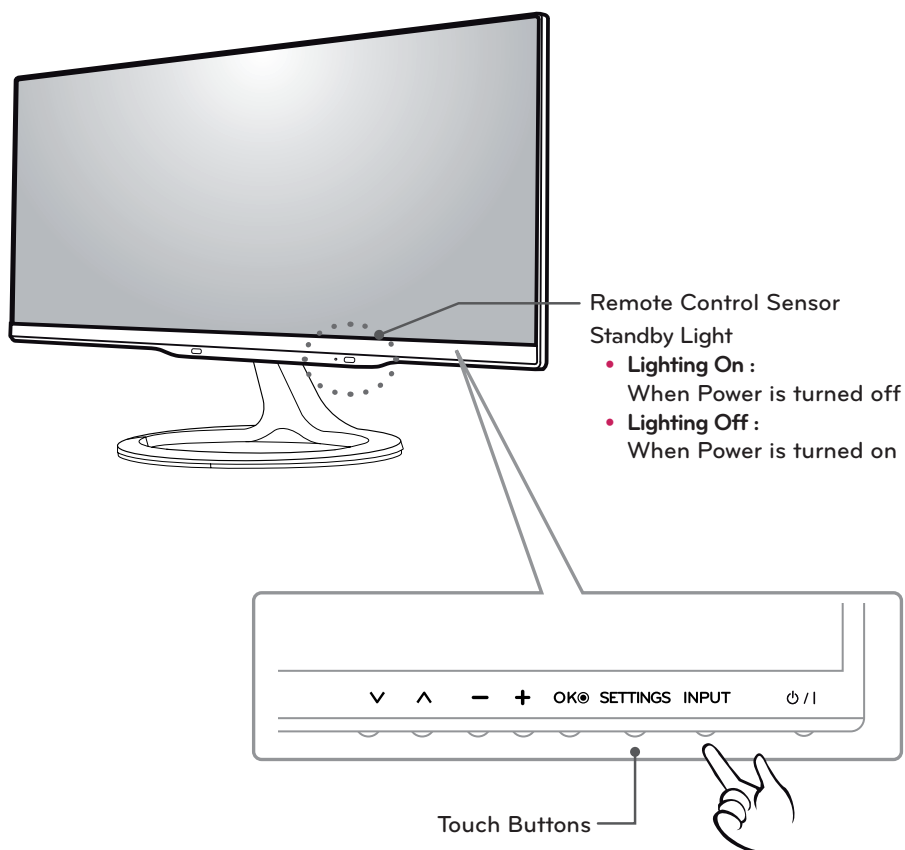


Connect one end of the isolator to cable/antenna jack and the other to TV set or set-top box.

"Equipment connected to the protective earthing of the building installation through the mains connection or through other equipment with a connection to protective earthing - and to a cable distribution system using coaxial cable, may in some circumstances create a fire hazard. Connection to a cable distribution system has therefore to be provided through a device providing electrical isolation below a certain frequency range (galvanic isolator, see EN 60728-11)"

When applying the RF Isolator, a slight loss of signal sensitivity can occur.

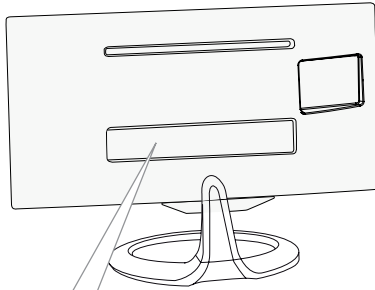
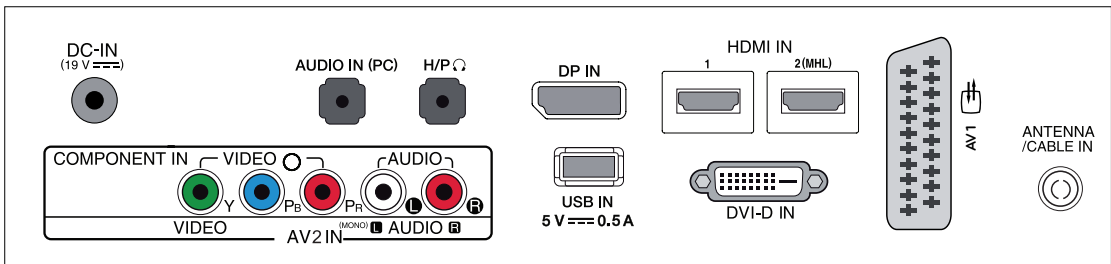
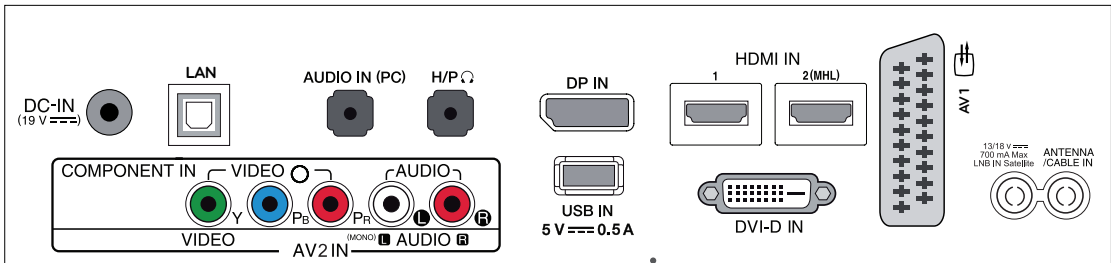
Parts and buttons



NOTE

All of the buttons are touch sensitive and can be operated through simple touch with your finger.
Power and control touch button are located on the bottom.

Touch button	Description
V ^	Scrolls through the saved programmes.
- +	Adjusts the volume level.
OK	Selects the highlighted menu option or confirms an input.
SETTINGS	Accesses the main menus, or saves your input and exits the menus.
INPUT	Changes the input source.
⏻ / I	Turns the power on or off.

**29MA73D****29MA73V**

Connection panel (See p.23)

Lifting and moving the TV

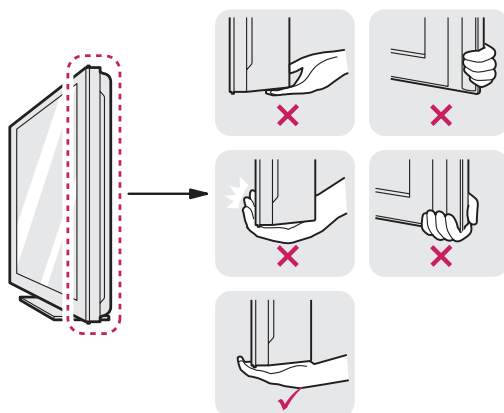
When moving or lifting the TV, read the following to prevent the TV from being scratched or damaged and for safe transportation regardless of its type and size.



CAUTION

Avoid touching the screen at all times, as this may result in damage to the screen or some of the pixels used to create images.

- It is recommended to move the TV in the box or packing material that the TV originally came in.
- Before moving or lifting the TV, disconnect the power cord and all cables.
- Hold the top and bottom of the TV frame firmly. Make sure not to hold the transparent part, speaker, or speaker grill area.



- When holding the TV, the screen should face away from you to prevent the screen from scratches.

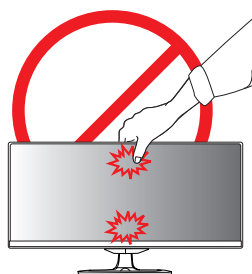


- When transporting the TV, do not expose the TV to jolts or excessive vibration.
- When transporting the TV, keep the TV upright, never turn the TV on its side, or tilt towards the left or right.



CAUTION

29MA73



Setting up the TV

Attaching the Stand

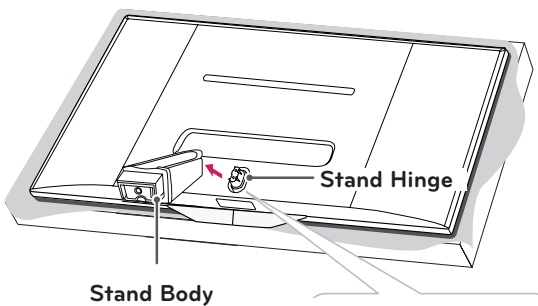
- 1 Place the screen face down.



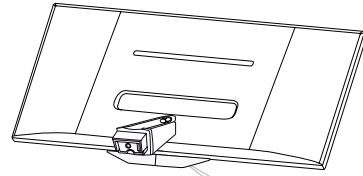
CAUTION

- To protect the screen from scratches, cover the surface with a soft cloth.

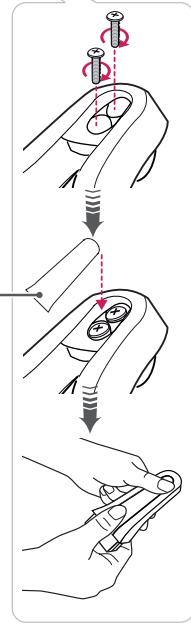
- 2 Check the orientation (front and rear) of the stand base and mount the **Stand Body** to the **stand hinge** as shown in the figure.



- 3 Fix two screws into the back of the stand base and close the screw cover.

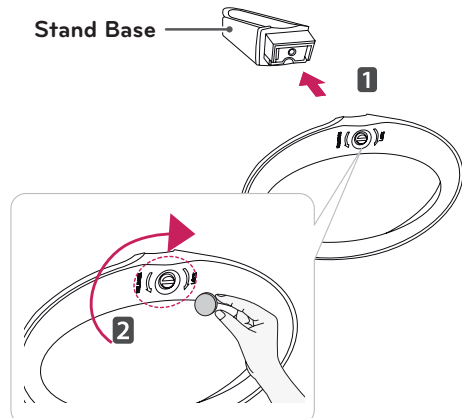


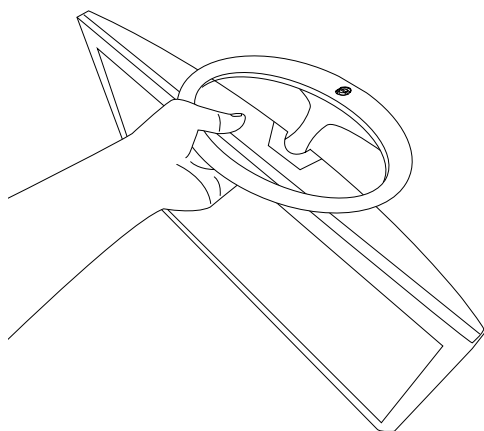
Stand Screw
Cover



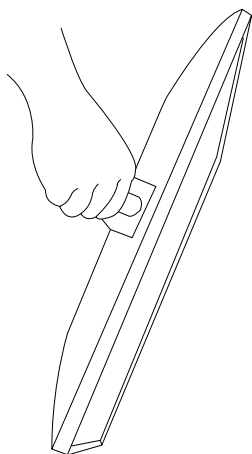
- 4 Attach the **Stand Base** from the **Stand Body** by turning the screw to the right with a **Coin**.

Stand Base



**CAUTION**

- Do not carry the TV upside-down as this may cause it to fall off its stand, resulting in damage or injury.
- The illustration shows a general example of installation and may look different from the actual product.

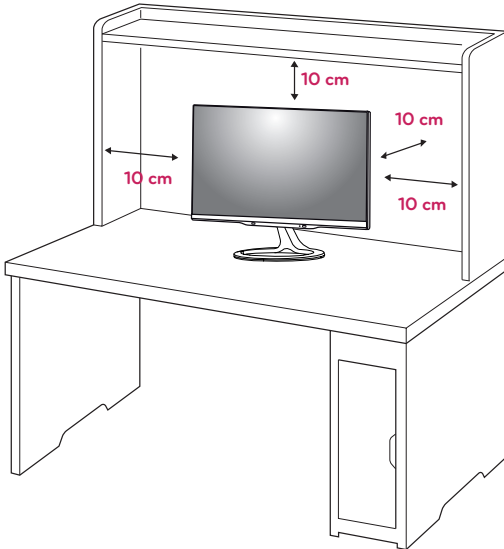


- Do not carry the TV upside-down by holding the stand body as this may cause it to fall off, resulting in damage or injury.
- The illustration shows a general example of installation and may look different from the actual product.

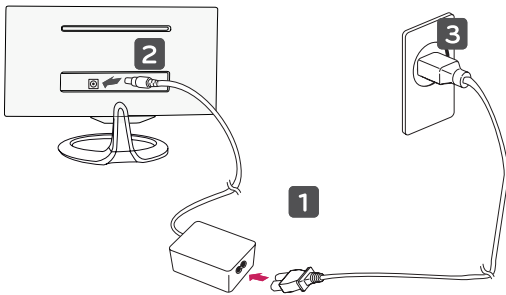
Mounting on a table

- 1 Lift and tilt the TV into its upright position on a table.

Leave a 10 cm (4 inches) (minimum) space from the wall for proper ventilation.



- 2 Connect the **AC-DC Adapter** and **Power Cord** to a wall outlet.



CAUTION

Do not place the TV near or on sources of heat, as this may result in fire or other damage.

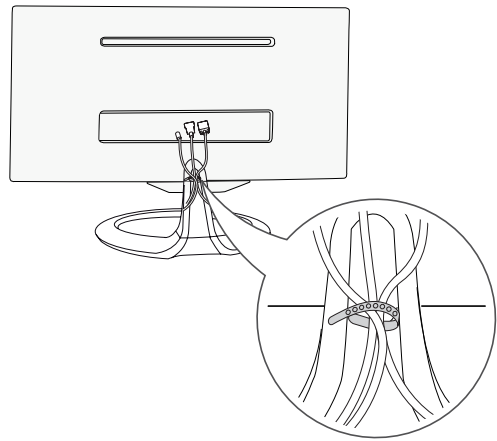


CAUTION

Disconnect the power cord first, and then move or install the TV. Otherwise electric shock may occur.

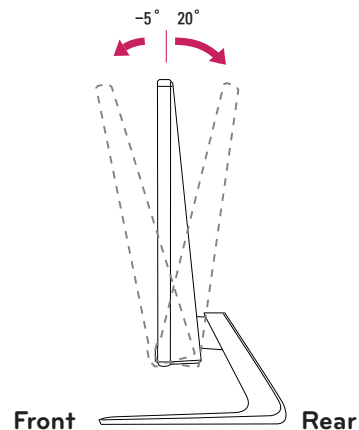
Tidying cables

Gather and bind the cables with the supplied cable tie.



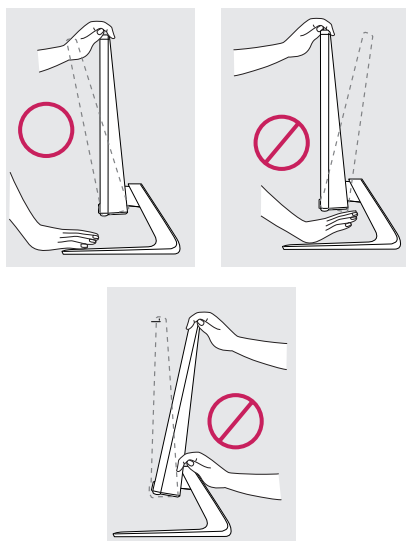
NOTE

Tilt from -5 to $+20$ degrees up or down to adjust the angle of the TV to suit your view.

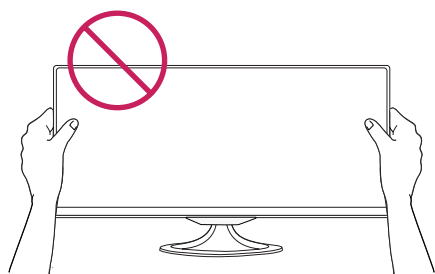


! WARNING

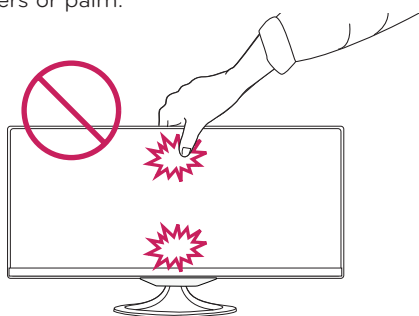
- When you adjust the angle, do not hold the bottom of the TV frame as shown on the following illustration, as may injure your fingers.



- Be careful not to touch or press the screen area when adjusting the angle of the TV.

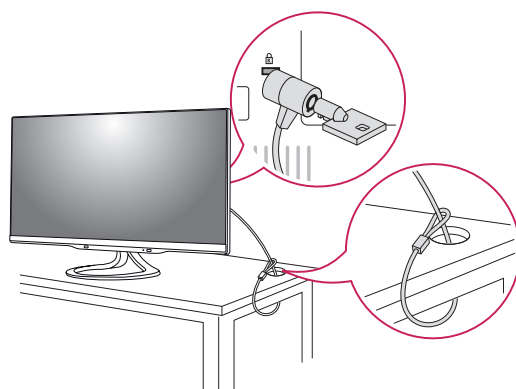


- Be careful not to press the screen with your fingers or palm.

**Using the Kensington security system**

The Kensington security system connector is located at the back of the TV. For more information of installation and using, refer to the manual supplied with the Kensington security system or visit <http://www.kensington.com>.

Connect the Kensington security system cable between the TV and a table.

**! NOTE**

The Kensington security system is optional. You can obtain additional accessories from most electronics stores.

Detaching the Stand

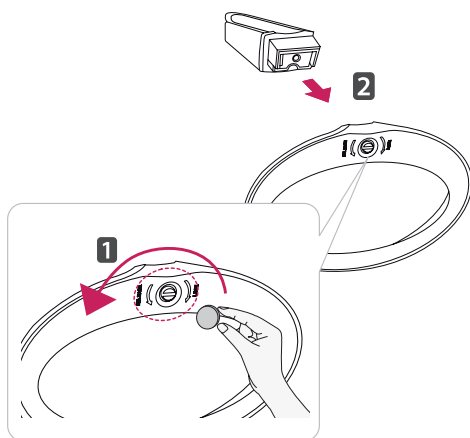
- 1 Place the screen face down.



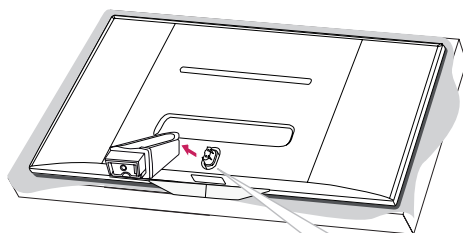
CAUTION

- To protect the screen from scratches, cover the surface with a soft cloth.

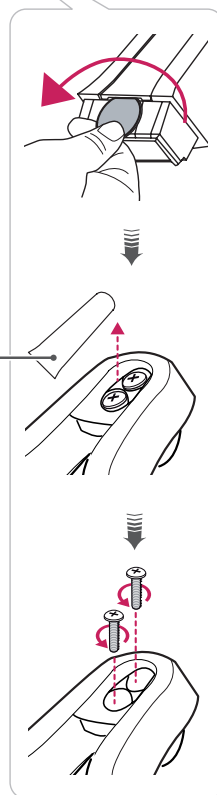
- 2 Turn the screw to the left, and then pull out the **Stand Base** from the **Stand Body**.



- 3 Open the screw cover on the back of the stand body and use a screw driver to remove the two screws.

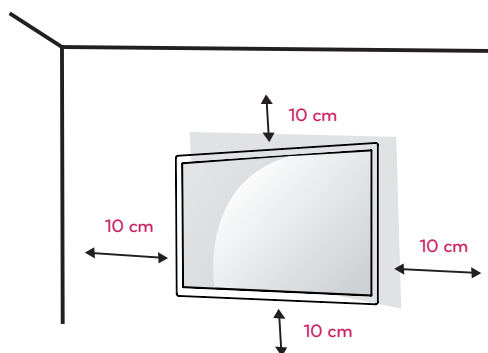


Stand Screw Cover



Mounting on a wall

For proper ventilation, allow a clearance of 10 cm on each side and from the wall. Detailed installation instructions are available from your dealer, see the optional Tilt Wall Mounting Bracket Installation and Setup Guide.



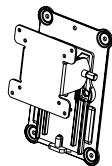
If you intend to mount the TV to a wall, attach Wall mounting interface (optional parts) to the back of the TV.

When you install the TV using the wall mounting interface (optional parts), attach it carefully so it will not drop.

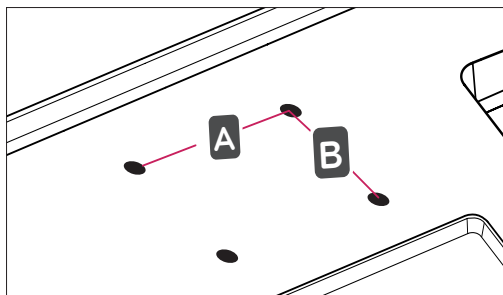
- 1 Please, Use the screw and wall mount interface in accordance with VESA Standards.
- 2 If you use screw longer than standard, the TV might be damaged internally.
- 3 If you use improper screw, the product might be damaged and drop from mounted position. In this case, LG Electronics is not responsible for it.
- 4 VESA compatible only with respect to screw mounting interface dimensions and mounting screw specifications.

5 Please use VESA standard as below.

- 784.8 mm (30.9 inch) and under
 - * Wall Mount Pad Thickness : 2.6 mm
 - * Screw : Φ 4.0 mm x Pitch 0.7 mm x Length 10 mm
- 787.4 mm (31.0 inch) and above
 - * Please use VESA standard wall mount pad and screws.

VESA (A x B)	100 x 100
Standard screw	M4
Number of screws	4
Wall mount bracket (optional)	RW120 

- VESA (A x B)



**CAUTION**

- Disconnect the power cord first, and then move or install the TV. Otherwise electric shock may occur.
- If you install the TV on a ceiling or slanted wall, it may fall and result in severe injury.
- Use an authorized LG wall mount and contact the local dealer or qualified personnel.
- Do not over tighten the screws as this may cause damage to the TV and void your warranty.
- Use the screws and wall mounts that meet the VESA standard. Any damages or injuries by misuse or using an improper accessory are not covered by the warranty.


**NOTE**

- Use the screws that are listed on the VESA standard screw specifications.
- The wall mount kit includes an installation manual and necessary parts.
- The wall mount bracket is optional. You can obtain additional accessories from your local dealer.
- The length of screws may differ depending on the wall mount. Be sure to use the proper length.
- For more information, refer to the instructions supplied with the wall mount.

WATCHING TV

Turning the TV on for the first time

When you access the TV for the first time, the initial setting screen appears. Select a language and customize the basic settings.

- 1 Connect the power cord to a power outlet.
- 2 Press  on the TV or power button on the remote control to turn the TV on.
The Standby Light is turned off.



NOTE

When the TV is in Power saving mode, the Standby Light turns amber.

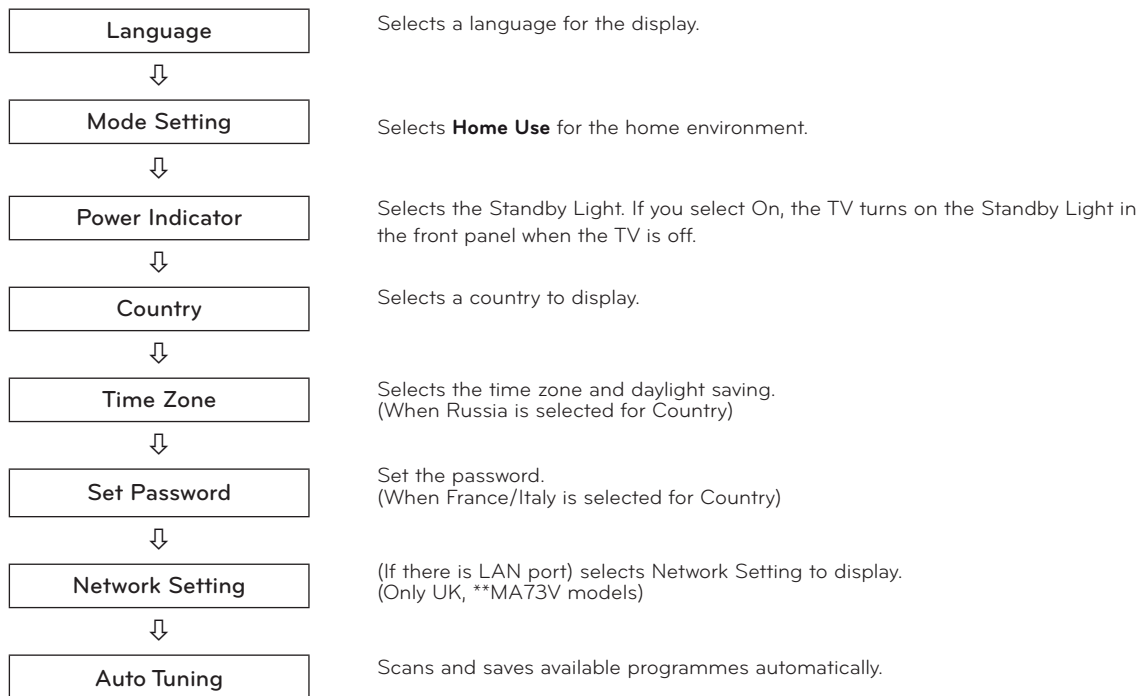
- 3 The initial setting screen appears if you access the TV for the first time.



NOTE

If you do not operate the TV within 40 seconds when the setting menu screen appears, the setting menus will disappear.

- 4 Follow the on-screen instructions to customize your TV according to your preferences.




**NOTE**

- For those countries without confirmed DTV broadcasting standards, some DTV features might not work, depending on the DTV broadcasting environment.
- To display images in the best quality for your home environment, select **Home Use mode**.
- **Store Demo** mode is suitable for the retail environment.
- If you select **Store Demo mode**, the previously customized settings will switch to the default settings of **Store Demo mode** in 5 minutes.

- 5 When the basic settings are complete, press **OK**.

**NOTE**

If you do not complete the initial setting, it will appear whenever you access the TV.

- 6 To turn the TV off, press  on the TV.
The Standby Light is turned on.

**CAUTION**

Disconnect the power cord from the power outlet when you do not use the TV for a long period of time.

**NOTE**

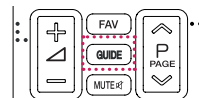
- You can also switch the TV from PC mode to TV mode, press **TV/PC**.
- You can also access **Initial Setting** by accessing **OPTION** in the main menus.

TV display (5:9 OSD)

Programme Guide

Press the **GUIDE** button on the remote control while you are watching TV.

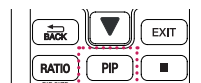
- On the right-hand side (5:9 OSD) of the TV screen, the details of channel you are currently watching and the channel organization information are displayed.
- For analogue TV, the message "No program information" is displayed.
- Only digital TV channels are searched and displayed. If there is no channel available, the message "No program information" is displayed.



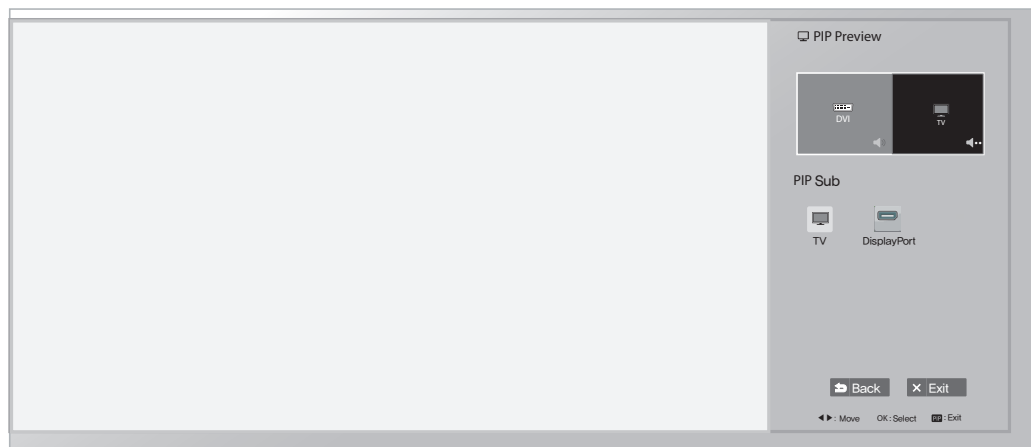
NO.	Description
①	Displays the programme you are currently watching.
②	Displays the broadcasting type of the channel you are currently watching.
③	Displays the broadcasting type icon. (e.g., HD, Dolly, Digital, etc.)
④	Displays the current date and time.
⑤	Displays the current channel or the entire programme list.
⑥	Broadcasting type icon area
⑦	Displays the name of programme you are currently watching.
⑧	Displays the running time of the programme. - Displays the progress including start and end times of the programme.
⑨	Displays the available functions. - If the channel you are currently watching is focused, the Watch function is displayed. - If the channel you are not currently watching is focused, the Schedule function is displayed.
⑩	Displays the program guide for all channels.

PIP function

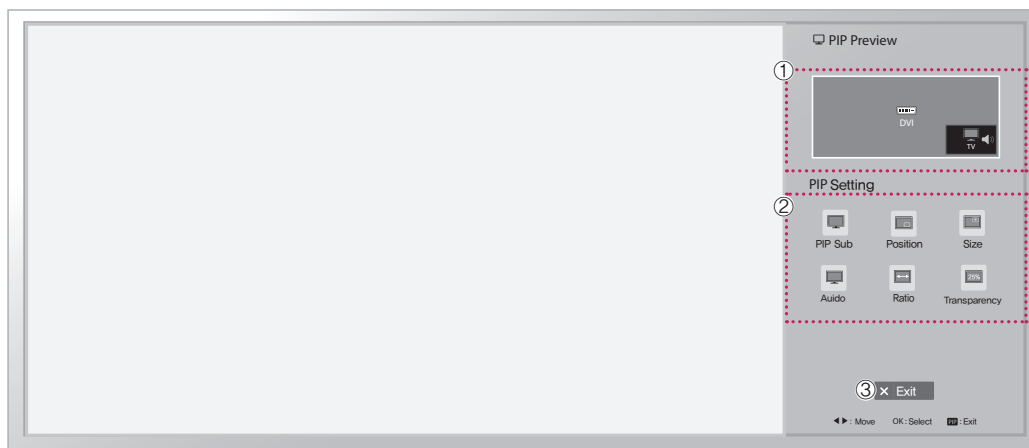
Press the **PIP** button on the remote control while you are watching DVI, HDMI1,2, DisplayPort



ENGLISH



While watching PIP, press the PIP Settings button on the remote control to display the Sub Menu.



NO.	Description						
①	Displays the configured OSD icon and its name.						
②	PIP Sub	Selects an option for PIP Sub. (See the PIP Map below.)					
PIP Map		PIP Sub					
		DVI	HDMI1	HDMI2/ MHL	DisplayPort	TV	
current input		DVI	X	X	X	O	O
		HDMI1	X	X	X	O	O
		HDMI2/ MHL	X	X	X	O	O
		DisplayPort	O	O	O	X	O
TV		X	X	X	X	X	
Position	Sets the position of the PIP Sub window. (top left, top right, bottom left or bottom right corner) *This function is disabled when the size is set to [Balanced].						
Size	Sets the size of the PIP Sub window. (Small / Medium / Large / Balanced)						
Audio	Selects the audio input. *Only the items that are available under the current combination are enabled (PIP Main/PIP Sub or Audio in).						
Ratio	Sets the aspect ratio of PIP Sub. *This function is able when Size is set to [Balanced].						
Transparency	Sets the opacity of PIP. (OFF/25%/50%/75%) *This function is disabled when Size is set to [Balanced].						
③	Exit button - Exits the OSD menu.						

MAKING CONNECTIONS

Connect various external devices to the TV and switch input modes to select an external device. For more information about an external device's connection, refer to the manual supplied with each device.

Available external devices are: HD receivers, DVD players, VCRs, audio systems, USB storage devices, PC, camcorders or cameras, gaming devices, and other external devices.

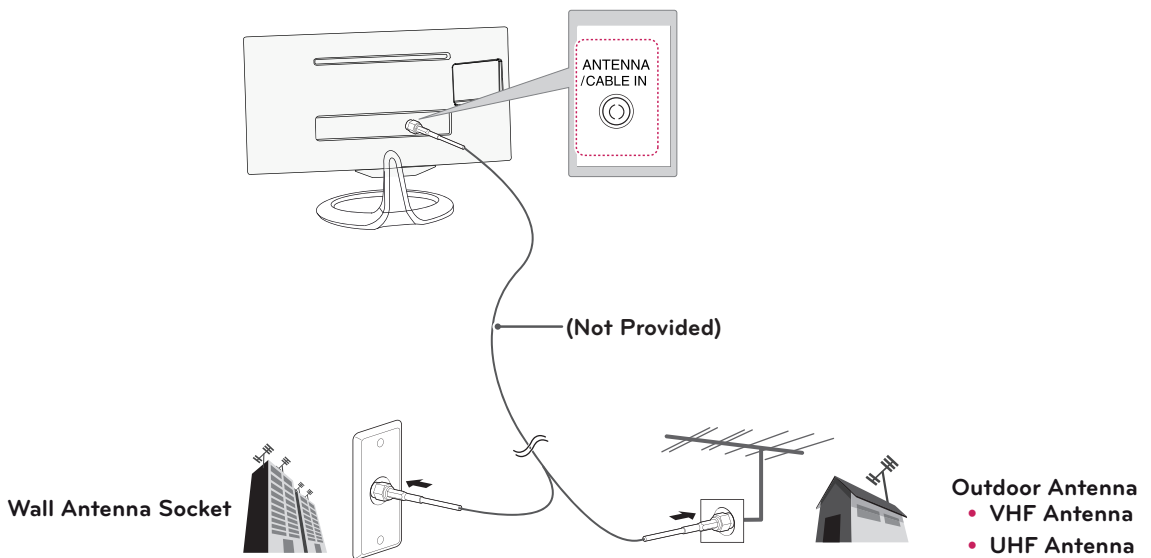
NOTE

- If you record a TV program on a DVD recorder or VCR, make sure to connect the TV signal input cable to the TV through a DVD recorder or VCR. For more information about recording, refer to the manual supplied with the connected device.
- The external device connection may differ from the model.
- Connect external devices to the TV regardless of the order of the TV port.

Connecting an antenna

Connect an antenna, cable or cable box to watch TV referring to the following. The illustrations may differ from the actual accessories and an RF cable is optional.

Connect the TV to a wall antenna socket with an RF cable (75 Ω).



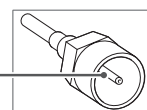
NOTE

- Use a signal splitter to use more than 2 TVs.
- If the image quality is poor, install a signal amplifier properly to improve the image quality.
- If the image quality is poor with an antenna connected, aim the antenna to the proper direction.
- Visit <http://AntennaWeb.org> for more information about the antenna and cable connection.

CAUTION

- Make sure not to bend the copper wire of the RF cable.

Copper wire

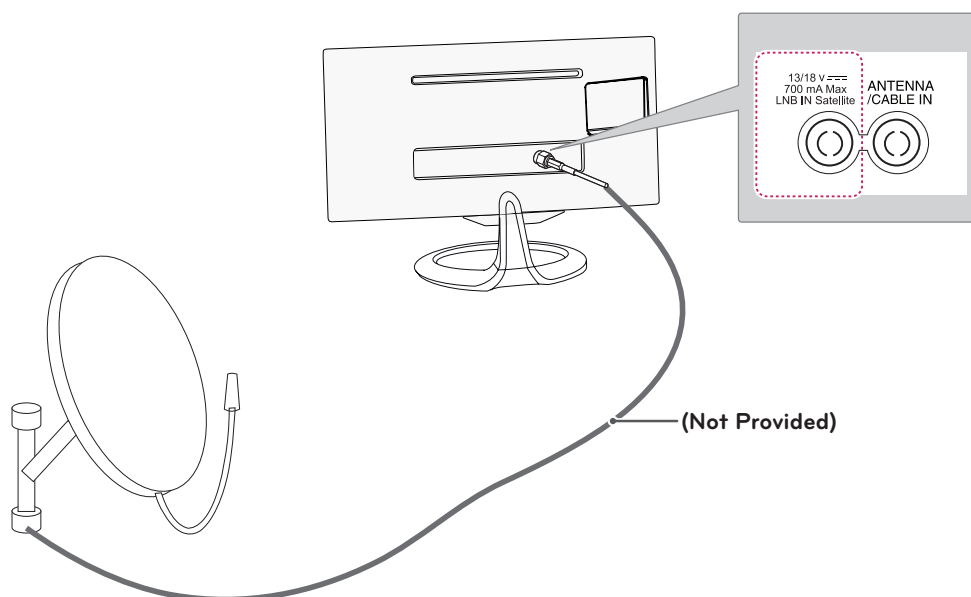


- Complete all connections instructions between devices, and then connect the power cord to the power outlet to prevent damages to your TV.

Satellite connection

**MA73V models

Connect the TV to a satellite dish to a satellite socket with a satellite RF cable (75 Ω).



Connecting to a HD receiver, DVD Player, VCR or Gaming device

Connect a HD receiver, DVD Player, VCR or Gaming device to the TV and select an appropriate input mode.

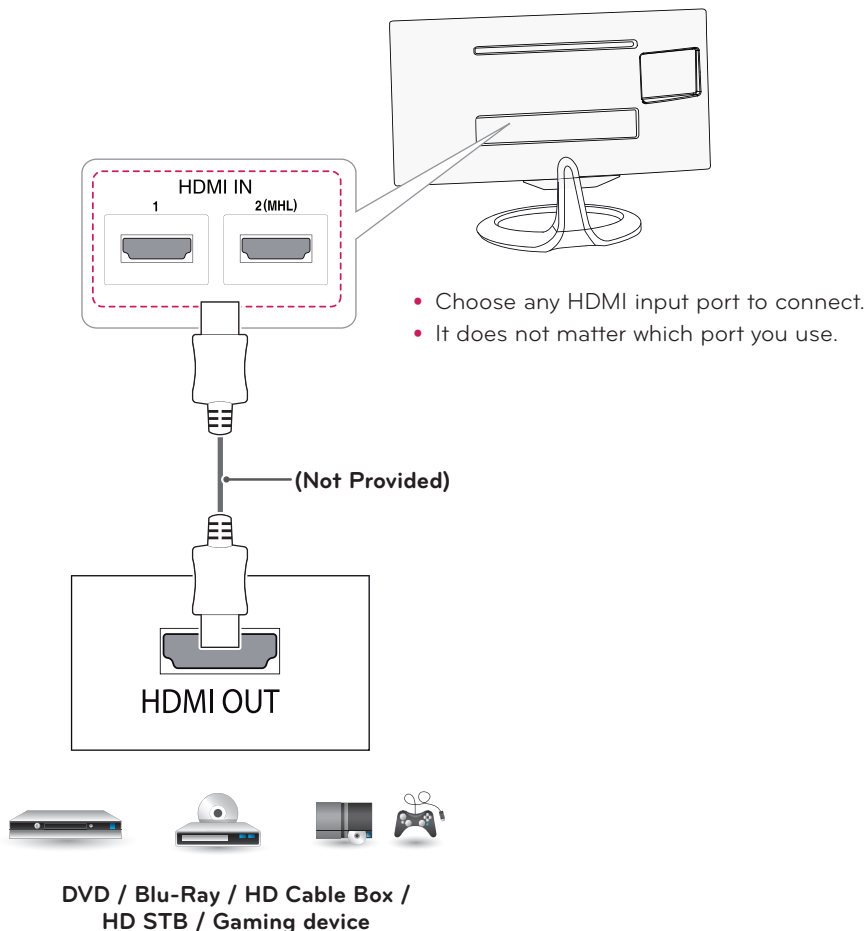
HDMI connection

HDMI is the best way to connect a device.

Transmits the digital video and audio signals from an external device to the TV. Connect the external device and the TV with the HDMI cable as shown on the following illustration.

! NOTE

- HDMI cable to the HDMI input and a digital broadcast receiver, connect the HDMI output. Video, with sound output.
- Press the INPUT button on the remote control to select either HDMI1 or HDMI2/MHL.
- Dolby Digital and DTS are not supported. If no sound is coming out, set the audio output of the connected device to PCM.

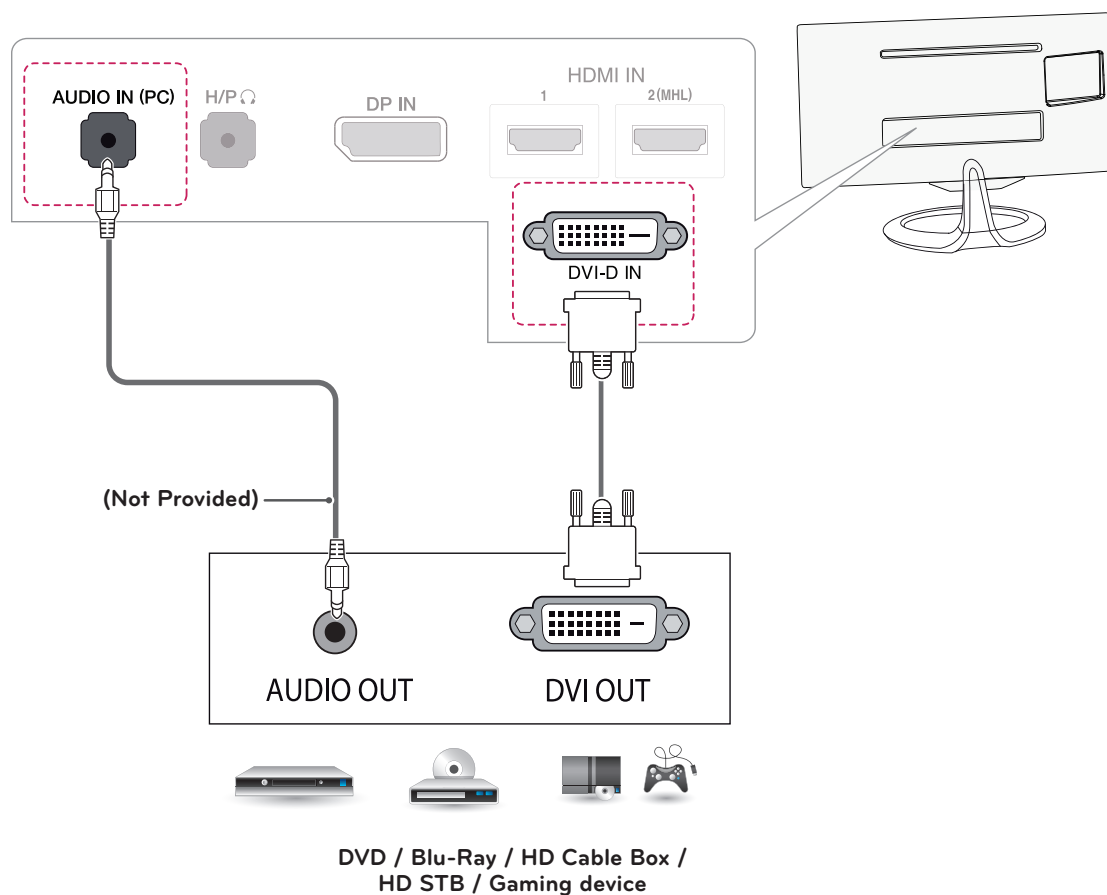


DVI-D connection

Transmits the digital video signal from an external device to the TV. Connect the external device and the TV with an DVI-D dual cable as shown in the following illustration. To transmit an audio signal, connect an optional audio cable.

! NOTE

- Please use the DVI-D dual cable provided.
- If you do not use DVI-D dual cable, this may result in distortion on the screen.
- If you do not use an optional external speaker, connect the external device to the TV with an optional audio cable.
- Connect the signal input cable and tighten it by turning the screws clockwise.
- Press the INPUT button on the remote control to select DVI.

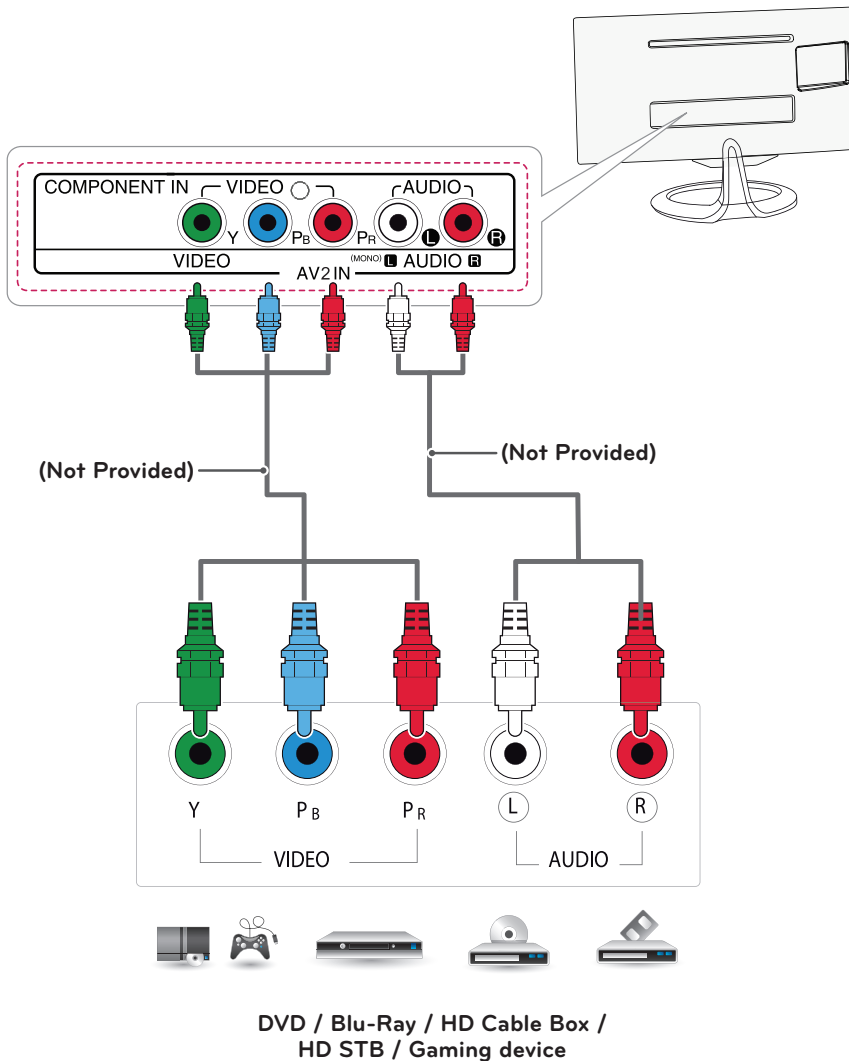


Component connection

Transmits the analog video and audio signals from an external device to the TV. Connect the external device and the TV with the component cable as shown on the following illustration. To display images by using progressive scan, make sure to use a component cable.

! NOTE

- If cables are installed incorrectly, it could cause the image to display in black and white or with distorted Colour.
- **Check to ensure each cable is matched with the corresponding Colour connection.**
- Press the INPUT button on the remote control to select Component.

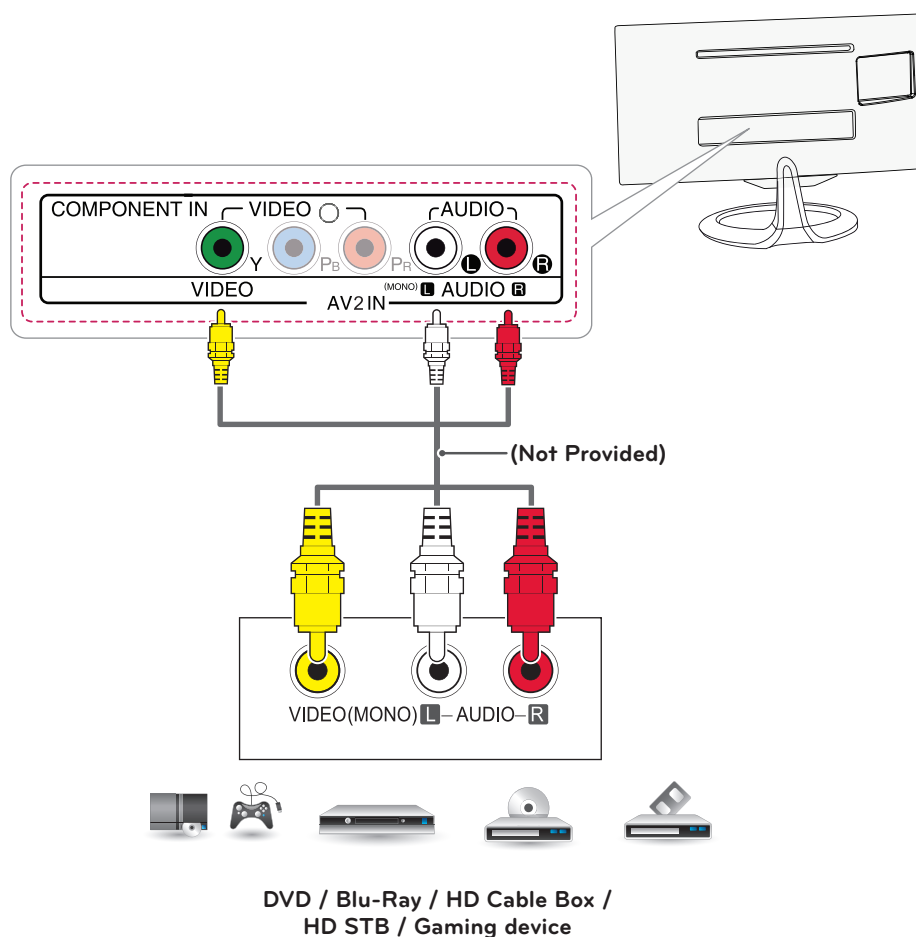


Composite Connection

Transmits the analog video and audio signals from an external device to the TV. Connect the external device and the TV with the composite cable as shown on the following illustration.

! NOTE

- Check to ensure each cable is matched with the corresponding Colour connection.
- Press the INPUT button on the remote control to select AV.



Euro Scart connection

Transmits the video and audio signals from an external device to the TV. Connect the external device and the TV with the Euro Scart cable as shown on the following illustration. To display images by using progressive scan, make sure to use the Euro Scart cable.

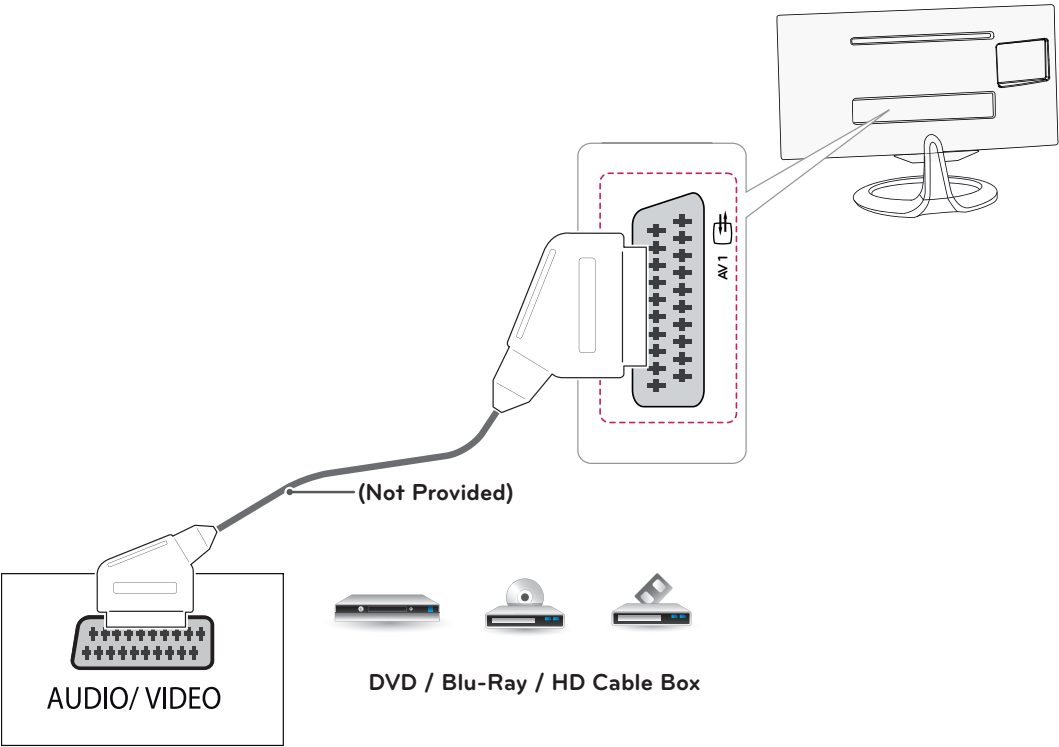
Output Type	AV1 (TV Out ¹)
Current input mode	
Digital TV	Digital TV
Analogue TV	Analogue TV
Component, AV, HDMI	Analogue TV

1 TV Out : Outputs Analogue TV or Digital TV signals.

!

NOTE

Any Euro scart cable used must be signal shielded.



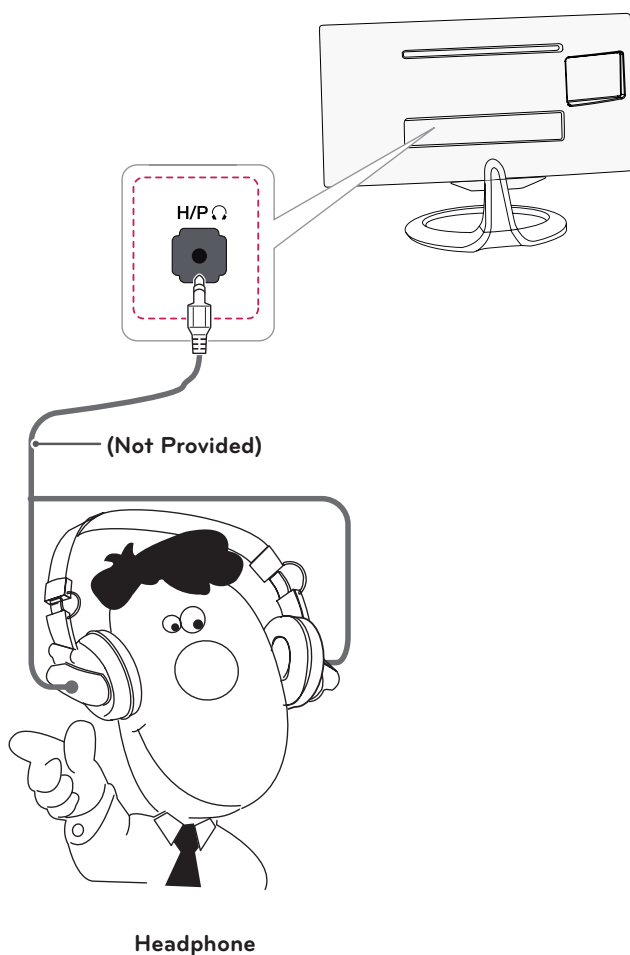
Headphone connection

Transmits the headphone signal from the TV to an external device. Connect the TV with the headphone as shown on the following illustration.



NOTE

- AUDIO menu items are disabled when connecting a headphone.
- Headphone impedance: 16 Ω
- Max audio output of headphone: 2.5 mW to 5.5 mW
- Headphone jack size: 0.35 cm

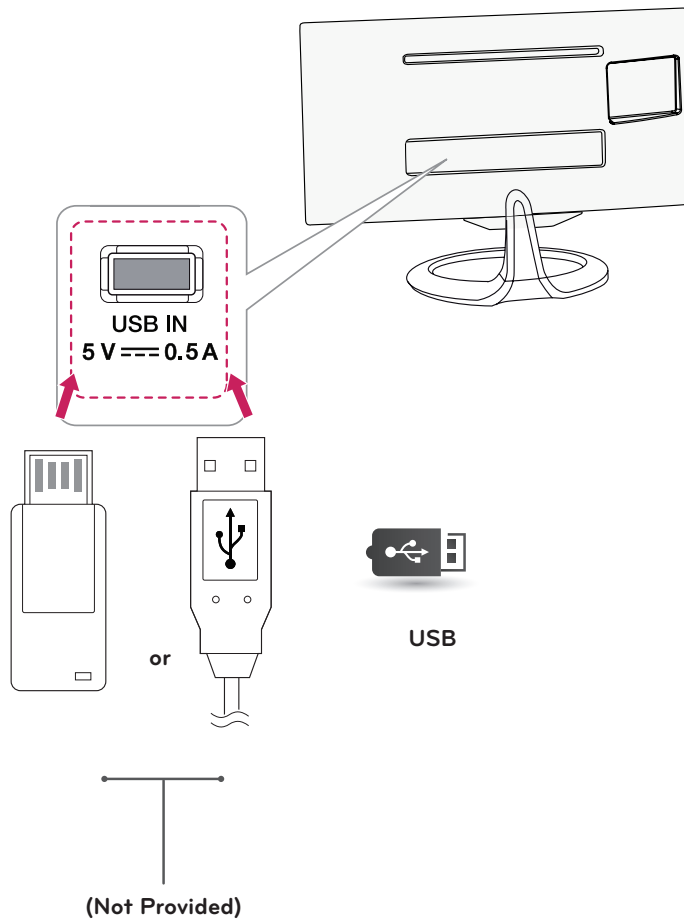


Connecting a USB Device

Connect a USB storage device such as a USB flash memory, external hard drive, MP3 player or a USB memory card reader to the TV and access the MY MEDIA to use various multimedia files.

! NOTE

- It may not work when USB 3.0 devices are connected.



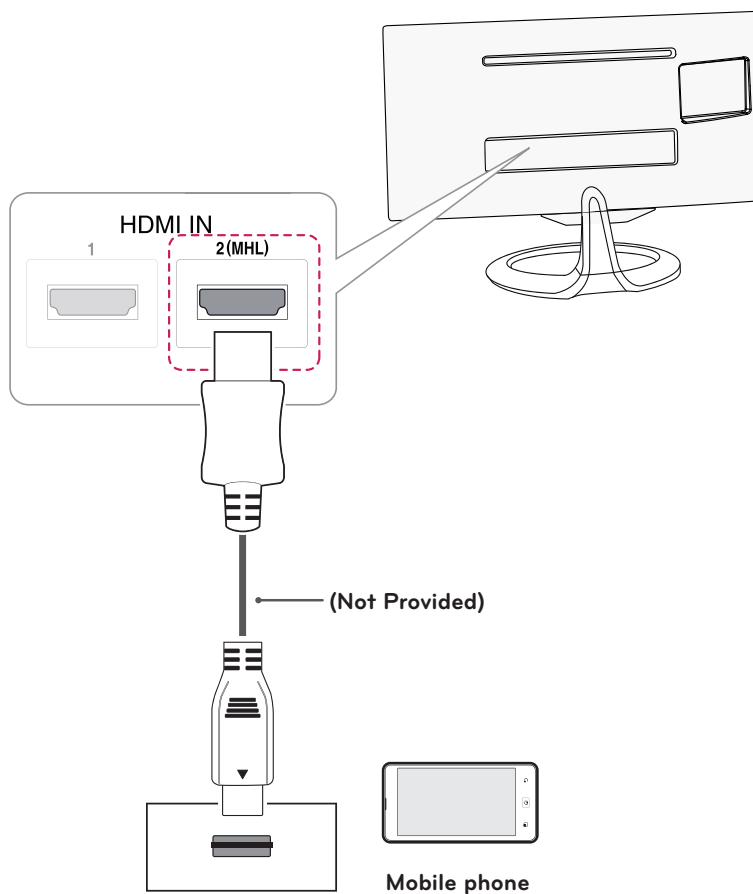
Smartphone (MHL) connection

Mobile High-definition Link (MHL) is an interface that allows you to play video and audio from your smartphone on the TV by connecting the TV to your smartphone. Connect the smartphone to the **HDMI2/MHL** port of the TV using the supplied **MHL signal cable** and switch the input by pressing the input button on the TV.



NOTE

- This function only works for smartphones that support MHL.
- There may be compatibility issues with other mobile phones.
- Use of the MHL remote control is not supported during the PIP operation.



Connecting to a wired network

Only UK, **MA73V models

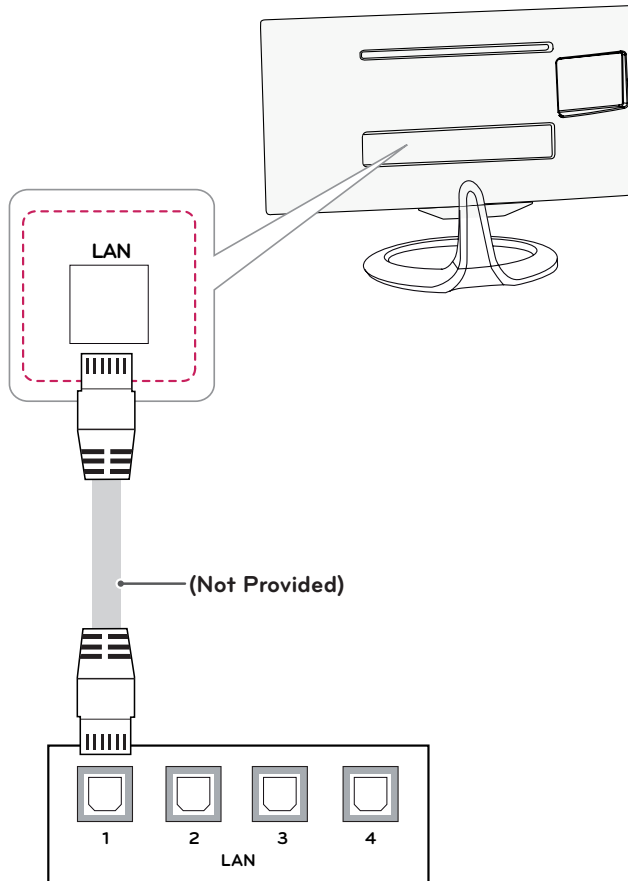
Connect the TV to a local area network (LAN) via the LAN port as shown on the following illustration and set up the network settings. After making a physical connection, a small number of home networks may require the TV network settings to be adjusted. For most home networks, the TV will connect to automatically without any adjustments.

For detail information, contact your internet provider or router manual.



CAUTION

- Do not connect a modular phone cable to the LAN port.
- Since there are various connection methods, please follow the specifications of your telecommunication carrier or internet service provider.



NOTE

[**MA73V Model]

- UK: LAN port is available. (The LAN port is added to support HD MHEG.)
- Other areas: LAN port is not available.

Connecting to a PC

Your TV supports the Plug & Play* feature.

* Plug & Play: The function when a PC recognizes a connected device and requires no driver to be installed.



NOTE

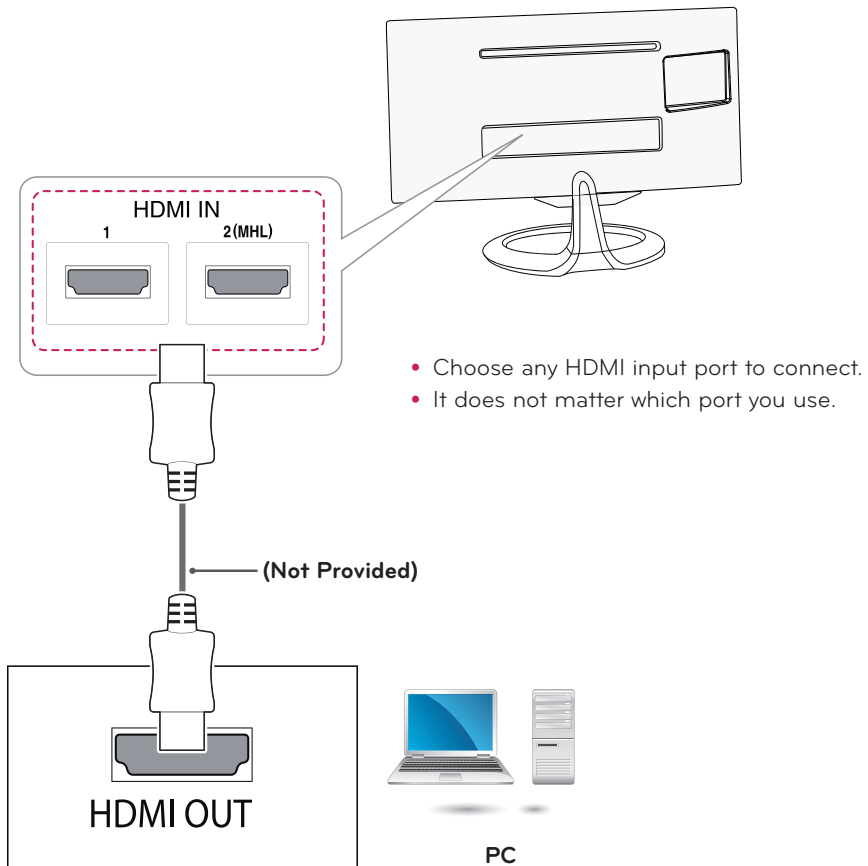
- It is recommended to use an TV with the HDMI connection for the best image quality.
- If you do not use an optional external speaker, connect the PC to the TV with the optional audio cable.
- If you turn the TV on when the set is cold, the screen may flicker. This is normal.
- Some red, green, or blue spots may appear on the screen. This is normal.
- Connect the signal input cable and tighten it by turning the screws clockwise.
- Do not press the screen with your finger for a long time as this may result in temporary distortion on the screen.
- Avoid displaying a fixed image on the screen for a long period of time to prevent image burn. Use a screensaver if possible.
- When connecting the power cord to the outlet, use a grounded (3-hole) multi-socket or a grounded power outlet.
- To comply with the standard specifications of the product, make sure to use a shielded interface cable made with a ferrite core for DVI-D and DVI-to-HDMI cables.

HDMI connection

Transmits the digital video and audio signals from your PC to the TV. Connect the PC and the TV with an HDMI cable as shown in the following illustrations.

! NOTE

- Use a High Speed HDMI™ cable.
- Please check your PC settings if you cannot hear any sound in HDMI mode.
- Press the INPUT button on the remote control to select either HDMI1 or HDMI2/MHL.
- Using a DVI to HDMI cable may cause compatibility issues.
- HDMI PC may cause device compatibility issues.
- Dolby Digital and DTS are not supported. If no sound is coming out, set the audio output of the connected device to PCM.

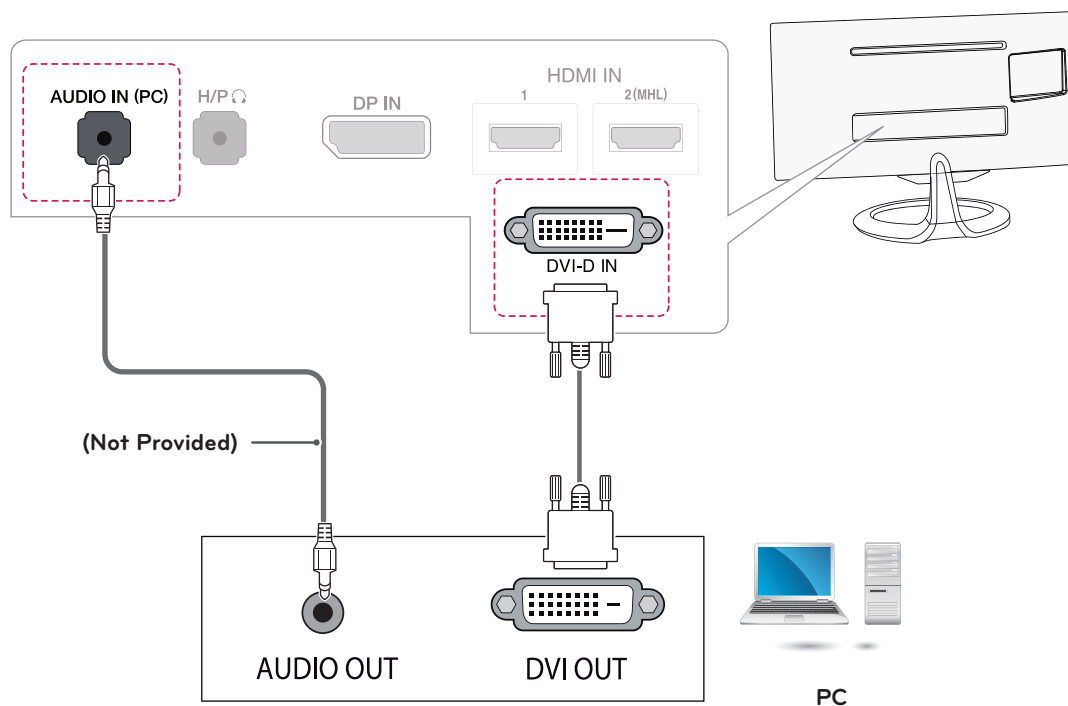


DVI-D connection

Transmits the digital video signal from your PC to the TV. Connect the PC and an TV with an DVI-D dual cable as shown the following illustrations. To transmit an audio signal, connect an optional audio cable.

! NOTE

- Please use the DVI-D dual cable provided.
- If you do not use DVI-D dual cable, this may result in distortion on the screen.
- If you do not use an optional external speaker, connect the PC to the TV with the optional audio cable.
- Using a DVI to HDMI cable may cause compatibility issues.
- Connect the signal input cable and tighten it by turning the screws clockwise.
- Press the INPUT button on the remote control to select to DVI.

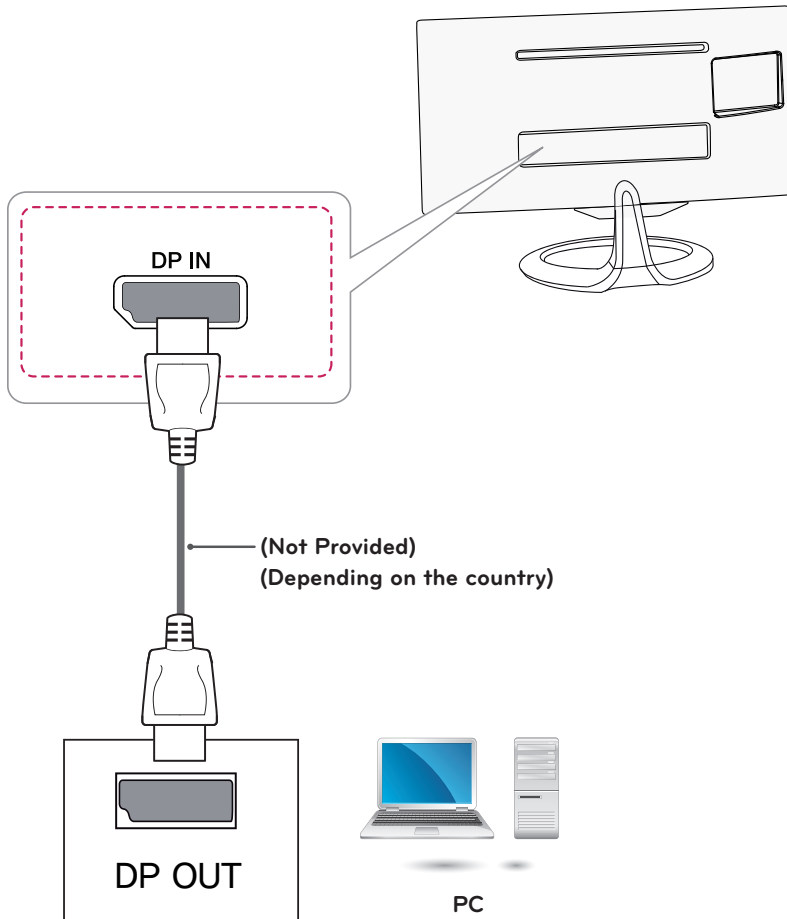


Display Port connection

Transmits the digital video and audio signals from your PC to the TV. Connect your PC to the TV using the display port cable as illustrated below.

! NOTE

- Sound may not hear depending on the DP version of your PC.
- Dolby Digital and DTS are not supported. If no sound is coming out, set the audio output of the connected device to PCM.
- Press the INPUT button on the remote control to select DisplayPort.
- Using a DP-to-HDMI or DP-to-DVI cable may cause compatibility issues.
- HDMI signals are not converted to DP signals.
- If you use a DP-to-HDMI cable, you can watch your media on a PC or other device with DP output by using the HDMI or DVI input port.



REMOTE CONTROL

The descriptions in this manual are based on the buttons of the remote control. Please read this manual carefully and use the TV correctly.

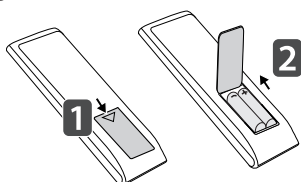
To replace batteries, open the battery cover, replace batteries (1.5 V AAA) matching ⊕ and ⊖ ends to the label inside the compartment, and close the battery cover.

To remove the batteries, perform the installation actions in reverse.

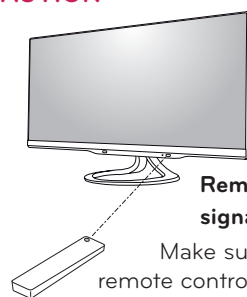


CAUTION

Do not mix old and new batteries, as this may damage the remote control.



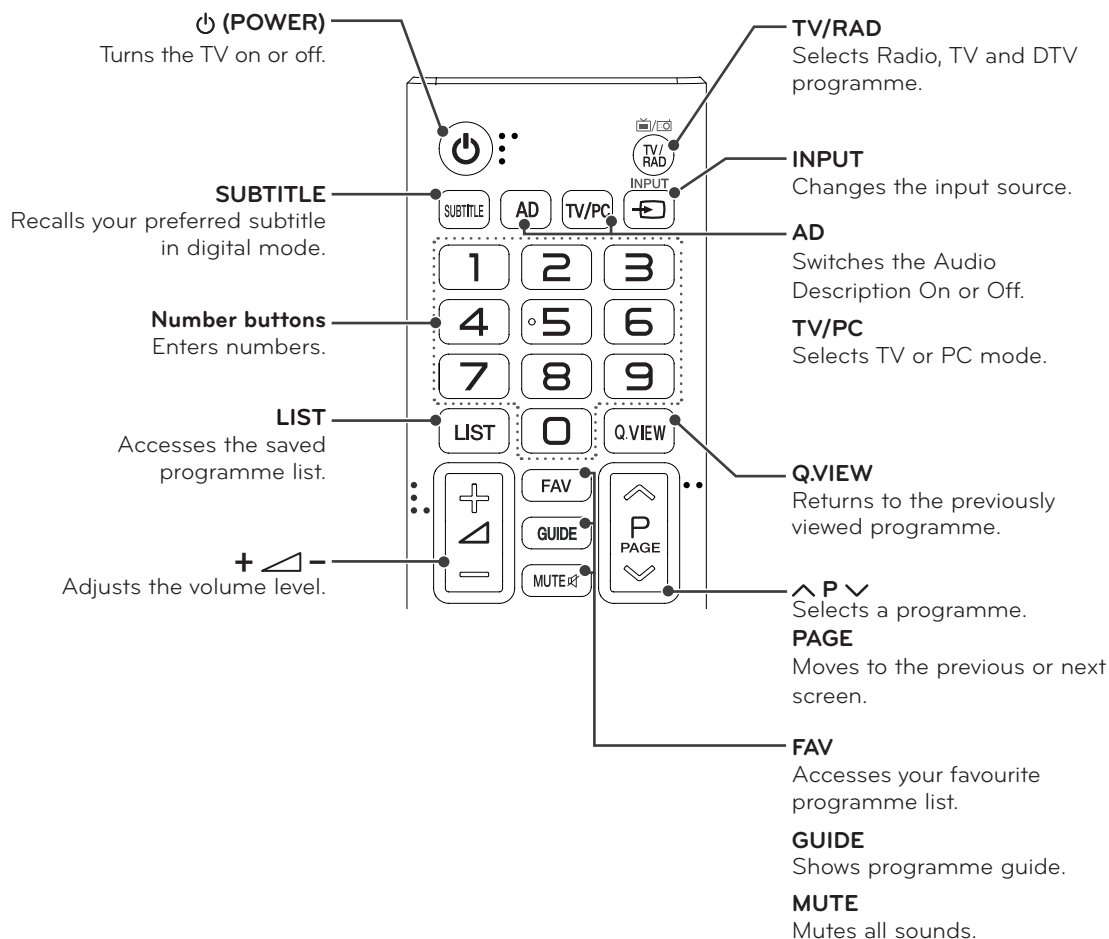
CAUTION

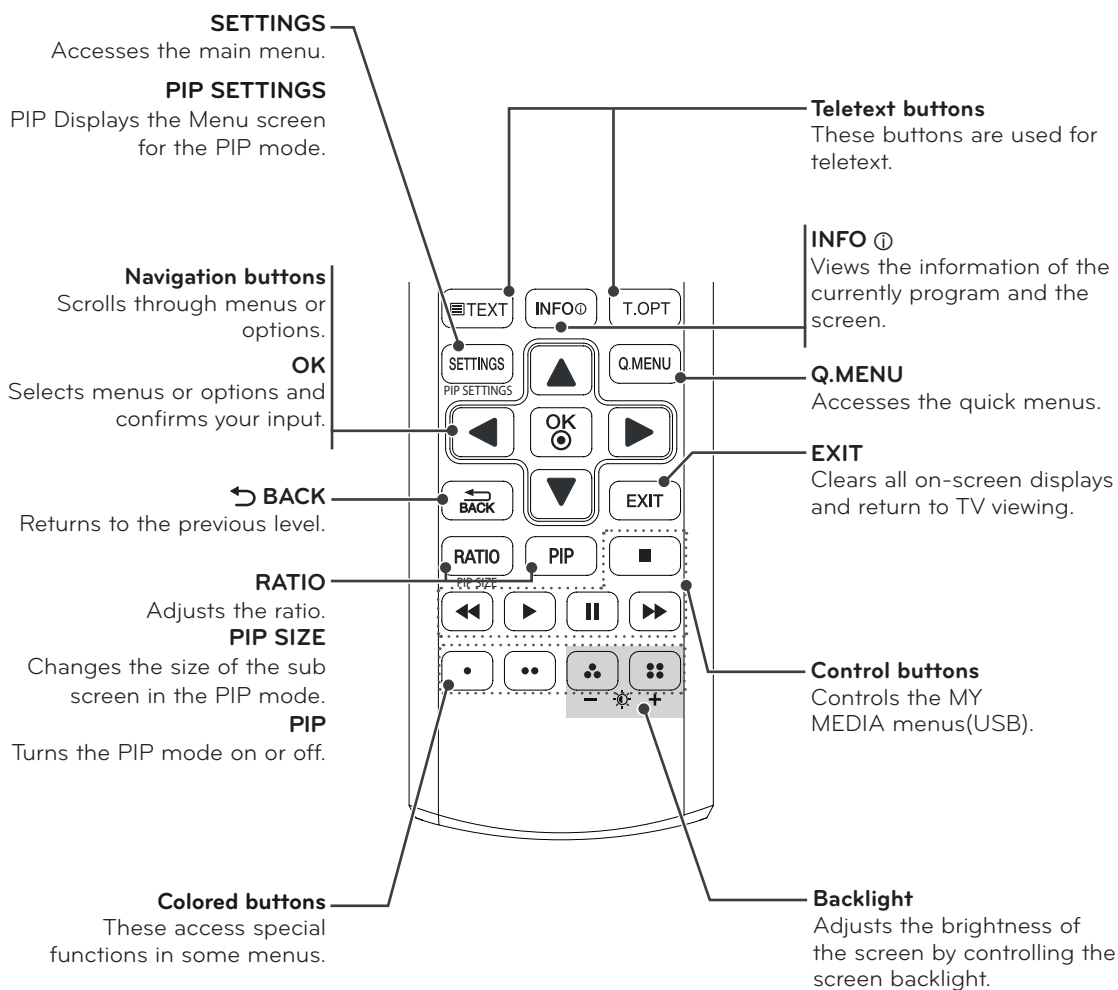


Remote control signal receiver

Make sure to point the remote control at the sensor on the TV.

Make sure to point the remote control to the remote control sensor on the TV.
Image shown may differ from your TV.

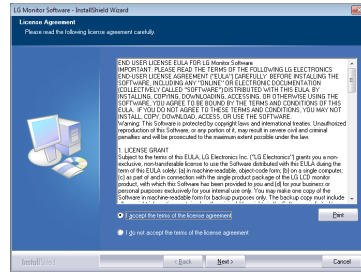




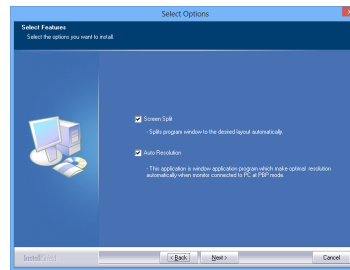
INSTALLING SCREEN SPLIT

Insert the the owner's manual CD included in the product package into your PC's CD driver and install the screen split.


- 1 Check "I accept the terms of the agreement" on the License Agreement screen and then click the [Next] button.



- 2 Select the program that you want to install.

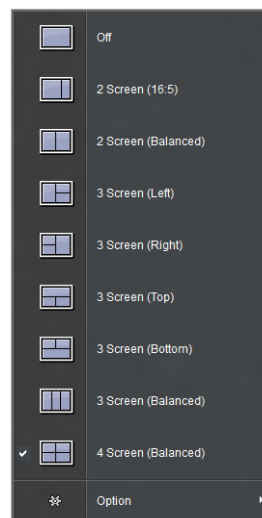


NOTE

If you run Screen Split, the Screen Split icon [] appears in the system tray at the right bottom of the PC screen.



Right-click the Screen Split icon and select a layout you want.



CUSTOMIZING SETTINGS

Accessing the Main Menus

The menus displayed on the TV screen may vary depending on the selected input mode.

TV, Component, AV

- 1 Press **SETTINGS** to access the main menus.
- 2 Press the Navigation buttons to scroll to one of the following menus and press **OK**.
- 3 Press the Navigation buttons to scroll to the setting or option you want and press **OK**.
- 4 When you are finished, press **EXIT**.
When you return to the previous menu, press **BACK**.

PICTURE Adjusts the image size, quality or effect.

AUDIO Adjusts the sound quality, effect or volume level.

SETUP Sets up and edit programmes.

TIME Sets the time, date or Timer feature.

LOCK Locks or unlocks channels and programs.

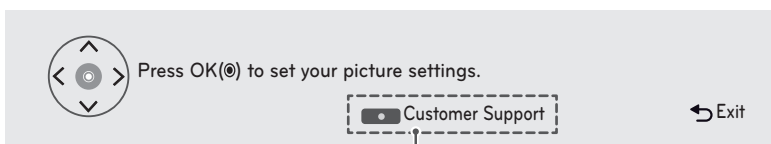
OPTION Customizes the general settings.

INPUT Views the input sources. (Except: UK country **MA73V models)

NETWORK Sets the network. (Apply: UK country **MA73V models)

MY MEDIA Using integrated media feature.

- Press **RED** button to access the **Customer Support** menus.



Customer Support

Using Customer Support feature.

- Software Update
- Picture Test
- Sound Test
- Signal Test
- Product/Service Info.
- Network Test (Apply: UK country **MA73V models)
- User Guide




PICTURE



To adjust Aspect Ratio

SETTINGS> PICTURE> Aspect Ratio	Description
16:9	Resizes the image ratio to fit 16:9 screen.
21:9	Resizes the image ratio to fit 21:9 screen.
Just Scan	Displays video images in the original size without removing parts of the edge of the image. In DTV, Component, HDMI, and DVI (over 720p) mode, Just Scan is available.
Original	When your TV receives a wide screen signal it will automatically change to the picture format broadcasted.
Full Wide	When TV receives the wide screen signal, it will let you adjust the picture horizontally or vertically, in a linear proportion, to fill the entire screen fully. 4:3 and 14:9 video is supported in full screen without any video distortion through DTV input.
4:3	Resizes the image ratio to fit 4:3 screen.
14:9	You can view a picture format of 14:9 or a general TV programme in the 14:9 mode. The 14:9 screen is viewed in the same way as in 4:3, but is moved up or down.
Zoom	Resizes the image to fit the screen width. The top and bottom parts of the image may be cut off.
Cinema Zoom 1	Formats an image to the cinemascope ratio (2.35:1) and zooms in on the ratio.

To select Picture Mode

SETTINGS> PICTURE> Picture Mode	Description
Select the picture mode optimized for the viewing environment or the program. Depending on input signal, available range of picture modes may differ.  Expert mode is for picture tuning professionals to control and fine-tune using a specific image. For normal images, the effects may not be drastic.	
Vivid / Standard / Cinema / Game	Select a Picture Mode of your choice.
Eco	The Energy Saver feature changes settings on the TV to reduce power consumption.
 Expert 1  Expert 2	Menu for adjusting picture quality that allows experts and amateurs to enjoy the best TV viewing. This menu for adjustment is provided for ISF-certified picture tuning professionals. (ISF logo can only be used on ISF-certified TVs.) ISFccc: Imaging Science Foundation Certified Calibration Control

To fine-tune picture mode

SETTINGS> PICTURE> Picture Mode> Backlight / Contrast / Brightness / Sharpness / Colour / Tint / Colour Temp.	Description
First select a Picture Mode of your choice. Depending on the input signal or other picture settings, the range of detailed items for adjustment may differ.	
Backlight	Adjusts the screen brightness by changing the brightness of the panel.
Contrast	Adjusts the Colour contrast and brightness of the screen.
Brightness	
Sharpness	Adjusts the sharpness of the screen.
Colour	Adjusts the Colour depth of the screen.
Tint	Adjusts the gamma, Colour temperature and Colour of the screen.
Colour Temp.	Adjusts the overall tint of the picture. In Expert mode, you can fine-tune the picture using the Gamma or Method options.

To set Expert Control

SETTINGS> PICTURE> Picture Mode> Advanced Control / Expert Control	Description
For each picture mode, screen can be calibrated; or for a special screen, picture settings can be adjusted. Select the desired Picture Mode. Depending on input signal or other picture settings, the range of detailed items for adjustment may differ.	
Dynamic Contrast	Adjusts the contrast to the optimal level according to the image's brightness.
Dynamic Colour	Adjusts Colours to make the image appear in more natural Colours.
Skin Colour	Skin Colour spectrum can be separately set to implement the skin Colour defined by the user.
Grass Colour	Natural Colour spectrum (meadows, hills, etc.) can be separately set.
Sky Colour	Sky Colour is set separately.
Gamma	Sets the gradation curve according to the output of picture signal in relation to the input signal.
SETTINGS> PICTURE> Picture Mode>Expert Control	Description
Dynamic Contrast	Adjusts the contrast to the optimal level according to the image's brightness.
Colour Gamut	Selects the range of Colours that can be expressed.
Edge Enhancer	Shows clearer and distinctive yet natural edges of the video.
Expert Pattern	Patterns used for expert adjustment.
Colour Filter	Filters a specific Colour spectrum in RGB Colours to fine-tune Colour saturation and hue accurately.
Colour Temperature	Adjusts the overall tone of the screen as desired. In Expert mode, detailed fine-tuning can be set via Gamma method, etc.
Colour Management System	This system is used by experts to adjust Colour with a test pattern. They can select from six Colour areas (Red/ Green/Blue/Cyan/Magenta/Yellow) without affecting other Colours. For normal images, adjustments may not result in noticeable Colour changes.

To set Picture Option

SETTINGS> PICTURE> Picture Mode> Picture Option	Description
Adjusts detailed setting for images.	
Noise Reduction	Reduces screen noise in the video.
MPEG Noise Reduction	Eliminates noise generated while creating digital picture signals.
Black Level	Adjusts the screen's brightness and contrast to fit them to the input picture's black level by using the blackness (black level) of the screen.
Real Cinema	Helps maintain the optimal state of the screen.
Motion Eye Care	Saves power consumption by adjusting the brightness corresponding to the movement of the image on the screen.

To set Picture Reset

SETTINGS> PICTURE> Picture Mode> Picture Reset	Description
Initializes picture settings that the user customizes. Each picture mode is reset. Select the desired picture mode to reset.	

AUDIO



To use Sound Mode

SETTINGS> AUDIO> Sound Mode	Description
	Adjusts TV audio to an optimal level based on a selected sound mode.
Standard	Suitable for all types of video.
Music / Cinema / Sport / Game	Sets audio optimized for a specific genre.

To adjust User Setting function

SETTINGS> AUDIO> Sound Mode> User Setting	Description
	Adjusts the volume to a level of your choice using the User EQ.
Reset	Resets voice options that the user has changed.

To set various sound options

To use Virtual Surround feature

SETTINGS> AUDIO> Virtual Surround	Description
	LG's proprietary audio processing technology allows 5.1ch-like surround sound from two speakers. When Clear Voice II is set to On, Virtual Surround cannot be selected.

To adjust Clear Voice II function

SETTINGS> AUDIO> Clear Voice II	Description
	Boosts voice clarity from the TV.

To set Auto Volume

SETTINGS> AUDIO> Auto Volume	Description
	Sets Auto Volume to ON and volume output from channel to channel is automatically adjusted for convenient TV watching when clicking through different channels.

To set sound out

SETTINGS> AUDIO> Sound Out	Description
TV Speaker	Sound is output through the TV speaker.
Headphone	Sound is output through the headphone connected to the earphone/headphone port.
DTV Audio Setting	When different audio types exist in an input signal, this function allows you to select the audio type you want.

To set AV Sync

SETTINGS> AUDIO> AV Sync. Adjust	Description
	Synchronizes unmatched video and audio. Select AV Sync. Adjust to On to synchronize audio output (TV speaker) with the video.

To adjust audio balance

SETTINGS> AUDIO> Balance	Description
	Adjusts left/right audio balance.

To use Sound Optimizer function

SETTINGS> AUDIO> Sound Optimizer	Description
	Allows optimized sound for individual TV installation.
Normal	General sound mode.
Wall Mount Type	Optimizes sound for a wall-mounted TV.
Stand Type	Optimizes sound for a stand-mounted TV.

LOCK



To set the password

SETTINGS> LOCK> Set Password	Description
	Set or change the TV password. The initial password is set as [0000].

To lock the system

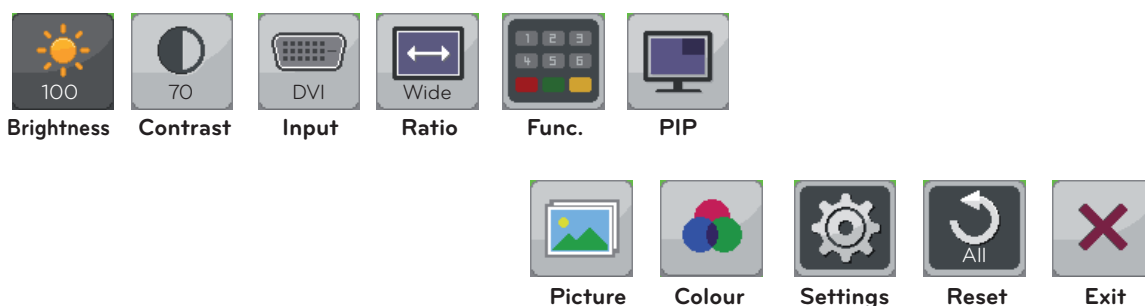
SETTINGS> LOCK> Lock System	Description
	Permits only specific programs by blocking channels. At first, select Lock System to ON .
Block Programme	Blocks programmes with content inappropriate for children. Programmes can be selected but the screen is blank and the audio is muted. To watch a locked programme, enter the password.
Parental Guidance	This function operates according to information from the broadcaster. Therefore if the signal has incorrect information, this function does not operate. Prevents children from watching certain adult TV programmes according to the ratings limit set. Enter a password to watch a blocked programme. Ratings differ by country.

To use Key Lock

SETTINGS> LOCK> Key Lock	Description
	Locks control buttons on the TV. Key Lock function remains intact even in case of power outage or when the power cord is removed from the wall socket. Key Lock function can only be set by remote control, and not by the button on the TV. Even with Key Lock ON, TV's buttons can turn on the power.

DVI, HDMI1, HDMI2/MHL, DisplayPort

- 1 Press **SETTINGS** to access the main menus.
- 2 Press the Navigation buttons to scroll to one of the following menus and press **OK**.
- 3 Press the Navigation buttons to scroll to the setting or option you want and press **OK**.
- 4 When you are finished, press **EXIT**.
When you return to the previous menu, press **BACK**.



Each option is described below.

Menu	Description
Brightness	Adjusts the brightness and contrast of the screen.
Contrast	
Input	Selects the current input mode.
Ratio	Adjusts the screen ratio.
Func.	Adjusts SES and picture mode.
PIP	Displays the screens of two input modes on one TV
Picture	Adjusts the sharpness, black level, and response time of the screen.
Colour	Adjusts the gamma, Colour temperature and Colour balance of the screen.
Settings	Sets the Language, PC/AV mode, Main Audio, Standby Light, DP 1.2 and Key Lock.
Reset	Resets to the default settings as of the day of purchase.
Exit	Exits the OSD menu.

Ratio Settings

- 1 Press **SETTINGS** to access the main menus.
- 2 Press the Navigation buttons to scroll to one of the following menus and press **OK**.
- 3 Press the Navigation buttons to scroll to the setting or option you want and press **OK**.
- 4 When you are finished, press **EXIT**.
When you return to the previous menu, press **BACK**.



Sub Menu



Each option is described below.

Menu > Ratio	Description
Wide	Displays the video in wide-screen, regardless of the video signal input.
Cinema1	Enlarges the screen with an aspect ratio of 21:9. (at 1080p)
Cinema2	Enlarges the screen with an aspect ratio of 21:9 including the black box area at the bottom for subtitles. (at 1080p)
Original	Displays a video according to the input video signal aspect ratio.
1:1	The aspect ratio is not adjusted from the original.
Back	Moves to the previous OSD screen.
Exit	Exits the OSD menu.

! NOTE

- The display may look the same for Wide, Original and 1:1 options at the recommended resolution (2560 x 1080).
- The ratio is disabled in the interlaced signal.

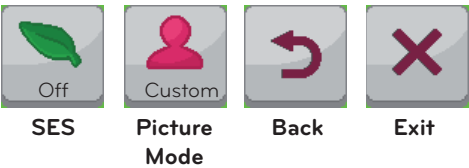
Func. Settings

- 1 Press **SETTINGS** to access the main menus.
- 2 Press the Navigation buttons to scroll to one of the following menus and press **OK**.
- 3 Press the Navigation buttons to scroll to the setting or option you want and press **OK**.
- 4 When you are finished, press **EXIT**.
When you return to the previous menu, press ↶ **BACK**.



Func.

Sub Menu

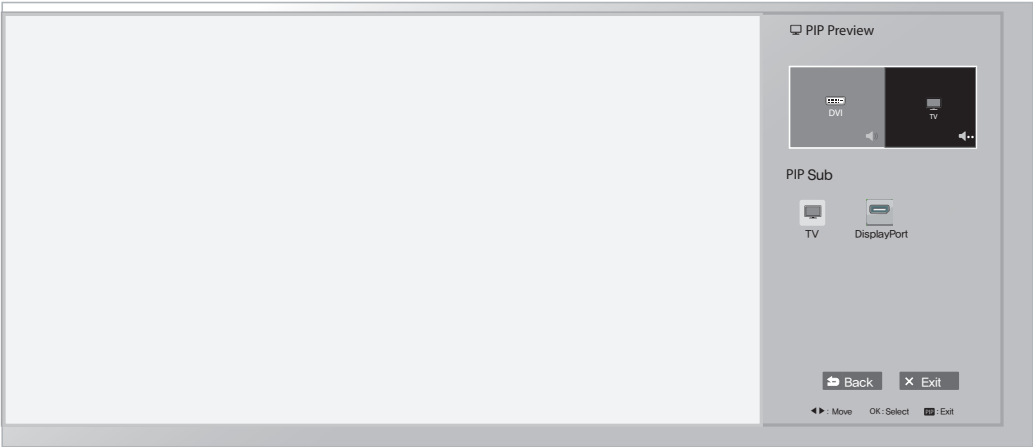


Each option is described below.

Menu > Func.		Description
SES (Super Energy Saving)	On	Enables the SES function, which allows you to save energy according to the SES efficiency level.
	Off	Disables the SES function.
Picture Mode	Changes depending on the value of PC/AV Mode in Menu > Settings.	
	PC Mode	
	Custom	Allows the user to adjust each element. The Colour mode of the main menu can be adjusted.
	Text	Optimizes the screen for document processing.
	Photo	Optimizes the screen to view photos.
	Cinema	Optimizes the screen to improve the visual effects of a video.
	Game	Optimizes the screen for gameplay.
	AV Mode (Available in HDMI signal only)	
	Custom	Allows the user to adjust each element. The Colour mode of the main menu can be adjusted.
	Standard	Optimizes the screen to display normal picture quality.
	Vivid 1	Optimizes the screen for vivid visual effects.
	Vivid 2	Optimizes the screen for more vivid visual effects.
	Cinema	Optimizes the screen to improve the visual effects of a video.
Back	Moves to the previous OSD screen.	
Exit	Exits the OSD menu.	

PIP settings


- 1 Press **SETTINGS** to access the main menus.
- 2 Press the Navigation buttons to scroll to one of the following menus and press **OK**.
- 3 Press the Navigation buttons to scroll to the setting or option you want and press **OK**.
- 4 When you are finished, press **EXIT**.



Each option is described below.

PIP Sub	Selects an option for PIP Sub. (See the PIP Map below.)						
	PIP Map		PIP Sub				
			DVI	HDMI1	HDMI2/ MHL	DisplayPort	TV
	current input	DVI	X	X	X	O	O
		HDMI1	X	X	X	O	O
		HDMI2/ MHL	X	X	X	O	O
		DisplayPort	O	O	O	X	O
		TV	X	X	X	X	X

Picture

- 1 Press **SETTINGS** to access the main menus.
- 2 Press the Navigation buttons to scroll to one of the following menus and press **OK**.
- 3 Press the Navigation buttons to scroll to the setting or option you want and press **OK**.
- 4 When you are finished, press **EXIT**.
When you return to the previous menu, press  **BACK**.



Picture

Sub Menu



Sharpness



Black Level



Response Time



Reset



Back




Exit

Each option is described below.

Menu > Picture		Description
Sharpness		Adjusts the sharpness of the screen.
Black Level		Sets the offset level (for HDMI only). Offset: as a reference for a video signal, this is the darkest Colour the TV can display.
	High	The picture of the screen gets brighter.
	Low	The picture of the screen gets darker.
Response Time		Sets a response time for displayed pictures based on the speed of the screen. For a normal environment, it is recommended that you use Normal. For a fast-moving picture, it is recommended that you use High. Setting to High may cause image sticking.
	High	Sets the response time to High.
	Middle	Sets the response time to Middle.
	Low	Sets the response time to Low.
Reset		Resets the Picture function to the default settings.
Back		Moves to the previous OSD screen.
Exit		Exits the OSD menu.

Colour

- 1 Press **SETTINGS** to access the main menus.
- 2 Press the Navigation buttons to scroll to one of the following menus and press **OK**.
- 3 Press the Navigation buttons to scroll to the setting or option you want and press **OK**.
- 4 When you are finished, press **EXIT**.
When you return to the previous menu, press  **BACK**.



Sub Menu


Gamma 1


Custom


50


50


50




Colour





Gamma

Colour Temp

Red

Green

Blue

Six Colour

Reset


Back

Exit

Each option is described below.

Menu > Colour	Description	
Gamma	Custom gamma setting: When using the gamma 0, gamma 1, and gamma 2 TV settings, higher gamma settings mean a brighter image is displayed and vice versa.	
Colour Temp	Selects the factory default picture Colour. Warm: Sets the screen Colour to a reddish tone. Medium: Sets the screen Colour between a red and blue tone. Cool: Sets the screen Colour to a bluish tone.	
	Custom	You can customize the picture Colour.
Red / Green / Blue	You can customize the picture Colour using Red, Green, and Blue Colours.	
Six Colour	Meets the user requirements for Colours through adjusting the Colour and saturation of the six Colours (red, green, blue, cyan, magenta, yellow) and saving the settings.	
	Hue	Adjusts tone of the screen.
	Saturation	Adjusts the saturation of the screen Colours. The lower the value, less saturated and bright the Colours become. The higher the value, the more saturated and dark the Colours become.
Reset	Returns the Colour settings to the default settings.	
Back	Moves to the previous OSD screen.	
Exit	Exits the OSD menu.	

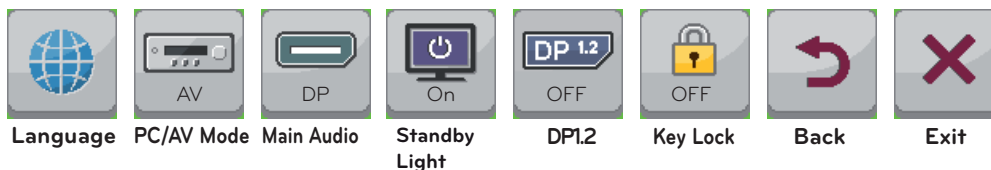
Settings

- 1 Press **SETTINGS** to access the main menus.
- 2 Press the Navigation buttons to scroll to one of the following menus and press **OK**.
- 3 Press the Navigation buttons to scroll to the setting or option you want and press **OK**.
- 4 When you are finished, press **EXIT**.
When you return to the previous menu, press  **BACK**.




Settings

Sub Menu



Each option is described below.

Menu > Settings	Description	
Language	Sets the menu screen to the desired language.	
PC/AV Mode	Enabled in HDMI mode only.	
Main Audio	The sound coming through the Audio In port of the digital input signal (HDMI, HDMI2/MHL, Display Port) can be heard through the TVs speakers.	
Standby Light	Turns the power indicator on the front side of the TV on/off.	
	On	The Standby Light is automatically turned on.
	Off	The Standby Light is turned off.
DP1.2 (DisplayPort1.2)	Activates or deactivates DisplayPort 1.2.	
	 NOTE — Make sure to activate or deactivate according to the DisplayPort version supported by the graphics card. Set it to off if it is not compatible with the graphics card.	
	On	DisplayPort 1.2 is activated.
	Off	DisplayPort 1.2 is deactivated.
Key Lock	Prevents incorrect key input.	
	On	Key input is disabled.
	Off	Key input is enabled.
Back	Moves to the previous OSD screen.	
Exit	Exits the OSD menu.	

USING THE USER GUIDE

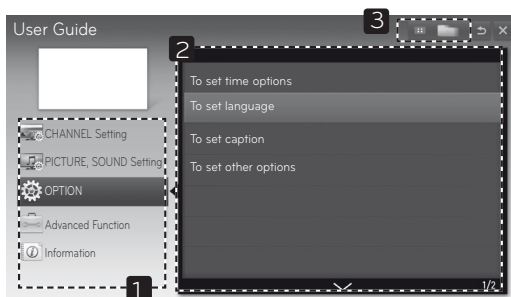
NOTE

- This function is available only in TV, AV or Component input mode.

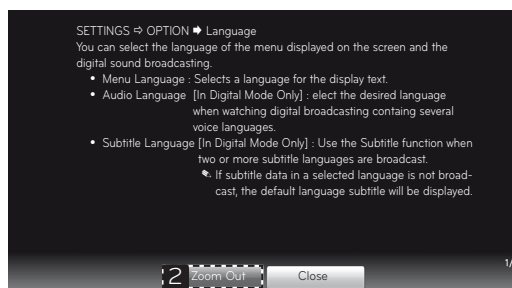
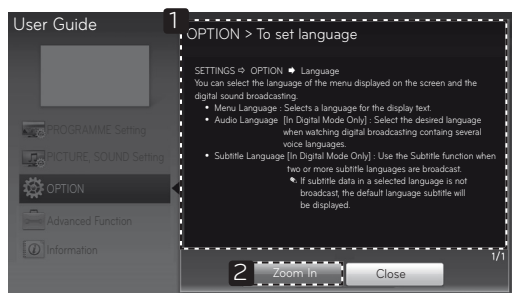
Accessing the On-Screen User Guide

- 1 Press **SETTINGS** to access the main menus.
- 2 Press the **RED** button to access the **Customer Support** menus.
- 3 Press the Navigation button to scroll to **User Guide** and press **OK**.
- 4 Press the Navigation buttons to scroll to the option you want and press **OK**.
- 5 When you are finished, press **EXIT**.
When you return to the previous menu, press **BACK**.

- Image shown may differ from your TV.



- 1 Allows to select the category you want.
- 2 Allows to select the item you want.
You can use **^**/**v** to move between pages.
- 3 Allows to browse the description of the function you want from the index.



- 1 Shows the description of the selected menu.
You can use **^**/**v** to move between pages.
- 2 Zooms in or out the screen.

MAINTENANCE

Cleaning Your TV

Clean your TV regularly to keep the best performance and to extend the product's lifespan.



CAUTION

- Make sure to turn the power off and disconnect the power cord and all other cables first.
- When the TV is left unattended and unused for a long time, disconnect the power cord from the wall outlet to prevent possible damage from lightning or power surges.

Screen and frame

To remove dust, wipe the surface with a dry and soft cloth.

To remove major dirt, wipe the surface with a soft cloth dampened in clean water or a diluted mild detergent. Then wipe immediately with a clean and dry cloth.



CAUTION

- Do not push, rub, or hit the surface with your fingernail or a sharp object, as this may result in scratches on the screen and image distortions.
- Do not use any chemicals, such as waxes, benzene, alcohol, thinners, insecticides, air fresheners, lubricants, as these may damage the screen's finish and cause discolorations.

Cabinet and stand

To remove dust, wipe the cabinet with a dry and soft cloth.

To remove major dirt, wipe the cabinet with a soft cloth dampened in a clean water or water containing a small amount of mild detergent.



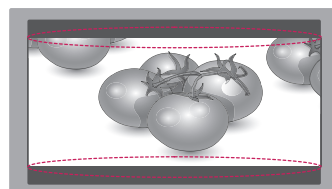
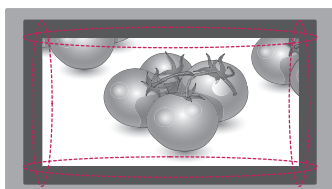
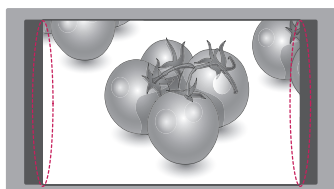
CAUTION

- Do not spray liquid onto the surface. If water enters the TV, it may result in fire, electric shock, or malfunction.
- Do not use any chemicals as this may deteriorate the surface.

Power cord

Remove the accumulated dust or dirt on the power cord regularly.

Preventing "Image burn" or "Burn-in" on your TV screen



- If a fixed image displays on the TV screen for a long period of time, it will be imprinted and become a permanent disfigurement on the screen. This is "image burn" or "burn-in" and not covered by the warranty.
- If the aspect ratio of the TV is set to 4:3 for a long period of time, image burn may occur on the letterboxed area of the screen.
- Avoid displaying a fixed image on the TV screen for a long period of time (2 or more hours for LCD) to prevent image burn.

TROUBLE SHOOTING

Symptom	Troubleshooting
No image is displayed.	<ul style="list-style-type: none"> • Check whether there is a power cut or whether the power cord is properly connected to the power outlet. • Check if the standby indicator is turned off. • If the screen is turned off due to use of the Energy Saving mode, press any button on the remote control to disable the Energy Saving mode and display the image. • Move the mouse or press any key, then the screen will appear.
The 'Out of Range' message is displayed on the screen.	<ul style="list-style-type: none"> • This symptom occurs when signals from the PC (video card) are out of the horizontal or vertical frequency range of the product. Please see the Product Specification section of this manual and configure your display again.
The 'No Signal' message is displayed on the screen.	<ul style="list-style-type: none"> • This symptom occurs when the signal cable between the PC and the product is not connected. Check the signal cable and connect it again. • Check if the input setting is correct when the PC and the product are connected.
The screen position is incorrect when using a PC.	<ul style="list-style-type: none"> • Check whether the resolution or frequency of the video card is set within the appropriate range for the product and go to Control Panel > Display > Settings to set it to the recommended resolution.
There are still images sticking after power off.	<ul style="list-style-type: none"> • Displaying a still image for a prolonged time may cause damage to the screen, resulting in the retention of the image. • Use a screen saver to protect the screen when using the product for a prolonged period of time.
The display is discolored (16 Colour).	<ul style="list-style-type: none"> • Set the Colour to 24 bit (true Colour) or higher. In Windows, go to Control Panel > Display > Settings > Colour Quality.
The screen Colour is unstable or the images are displayed in only one Colour.	<ul style="list-style-type: none"> • Check if the signal cable is connected properly. Reconnect the cable or reinsert the PC's video card.
Spots appear on the screen.	<ul style="list-style-type: none"> • When using the Product, pixilated spots (red, green, blue, white or black) may appear on the screen. This is normal for the LCD screen. It is not an error nor is it related to the Product's performance.
The 'Key Lock' message displays on the screen.	<ul style="list-style-type: none"> • The key lock is enabled. Go to Menu > Settings (Lock) and set 'Key Lock' to Off.
The remote control is not working.	<ul style="list-style-type: none"> • Make sure that there are no obstacles between the remote control and the Product. • Check whether the batteries are correctly inserted with the correct polarity. • If the batteries are weak, replace both of the batteries with new ones. • The product may malfunction in a place where a lamp with an electronic stabilizer (3-wavelength lamp) is installed.
Nothing is displayed on the TV screen.	<ul style="list-style-type: none"> • Use the TV/PC switch key to select TV.
No sound is heard from the PC.	<ul style="list-style-type: none"> • Check whether the audio cable is connected between the PC and the product.



NOTE

- **Vertical Frequency:** In order to display an image, the screen must be refreshed dozens of times per second like a fluorescent lamp. The number of times the screen is refreshed per second is called vertical frequency or refresh rate and is represented by Hz.
- **Horizontal Frequency:** The time it takes to display one horizontal line is called the horizontal cycle. The number of horizontal lines displayed in one second can be calculated by dividing one by the horizontal cycle. This is called horizontal frequency and is represented by kHz.



NOTE

- Check if the video card's resolution or frequency is within the range allowed by the Product and set to the recommended (optimal) resolution in **Control Panel > Display > Settings**.
- Failing to set the video card to the recommended (optimal) resolution may result in blurred text, a dimmed screen, a truncated display area or misalignment of the display.
- The configuration procedure may differ depending on your computer and/or operating system. Also, some video cards may not support certain resolutions. If this is the case, contact the manufacturer of the computer or video card for assistance.
- Some video cards may not support the 2560x1080 resolution. If the resolution cannot be displayed, contact the manufacturer of your video card.

SPECIFICATIONS

	Satellite Digital TV ¹	Digital TV	Analogue TV
Television system	DVB-T/T2 DVB-C DVB-S/S2	DVB-T DVB-C	PAL/SECAM B/G/D/K, PAL I/I', SECAM L/L' ²
Programme coverage	VHF, UHF C-Band, Ku-Band	VHF, UHF	VHF: E2 to E12, UHF : E21 to E69, CATV: S1 to S21, HYPER: S21 to S47
Maximum number of storable programmes	6,000	1,500	

1 Only DVB-T2 support models

2 Except for Nordic countries (Denmark, Finland, Norway and Sweden)

Panel	Screen Type	730 mm Wide (29 inch) Visible diagonal size : 730 mm
	Pixel Pitch	0.2628 mm (H) x 0.2628 mm (V)
Video Signal	Max. Resolution	2560 × 1080 @ 60 Hz
	Recommended Resolution	2560 × 1080 @ 60 Hz
	Horizontal Frequency	30 kHz to 90 kHz
	Vertical Frequency	56 Hz to 75 Hz
	Synchronization Type	Digital
Input Connector		29MA73D TV, PC Audio In, Component, AV1(SCART), AV2(CVBS), HDMI*2, USB, DP, DVI-D, PCMCIA
		29MA73V TV, PC Audio in, Component, AV1(SCART), AV2(CVBS), HDMI*2, USB, DP, DVI-D, PCMCIA, LAN(Only UK)
Power	Rated Voltage	19 V --- 3.2 A
	Power Consumption	On Mode : 52 W (typ.) Off Mode ≤ 0.5 W
AC/DC Adapter		Manufacturer : LG Innotek, Model : PSAB-L206A Manufacturer : APD, Model : DA-65F19
Tilt	Tilt Range	-5 to 20°
Dimensions (Width x Depth x Height) Weight	With Stand	
	699.7 mm x 197.2 mm x 404.5 mm 6.0 kg	
	Without Stand	
	699.7 mm x 68.5 mm x 327.5 mm 5.4 kg	
Environmental conditions	Operating Temperature	10 °C to 35 °C
	Operating Humidity	20 % to 80 %
	Storage Temperature	-10 °C to 60 °C
	Storage Humidity	5 % to 90 %

Product specifications shown above may be changed without prior notice due to upgrade of product functions.

DVI-D / HDMI / DisplayPort(PC) supported mode

Resolution	Horizontal Frequency(kHz)	Vertical Frequency(Hz)
720 x 400	31.468	70.080
640 x 480	31.469	59.940
640 x 480	37.500	75.000
800 x 600	37.879	60.317
800 x 600	46.875	75.000
1024 x 768	48.363	60.004
1024 x 768	60.023	75.029
1152 x 864	67.500	75.000
1280 x 720	45.000	60.000
1280 x 1024	63.981	60.020
1280 x 1024	79.976	75.025
1600 x 900	60.000	60.000
1680 x 1050	65.290	59.954
1920 x 1080	67.500	60.000
2560 x 1080	66.700	60.000

! NOTE

- The recommended resolution is 2560x1080/60Hz. However, it may not be supported depending on your PC or AV model.

HDMI / MHL(VIDEO) supported mode

Resolution	Horizontal Frequency(kHz)	Vertical Frequency(Hz)
720 x 480	31.500	60.000
720 x 576	31.250	50.000
1280 x 720	37.500	50.000
1280 x 720	45.000	60.000
1920 x 1080	33.750	60.000
1920 x 1080	28.125	50.000
1920 x 1080	27.000	24.000
1920 x 1080	33.750	30.000
1920 x 1080	56.250	50.000
1920 x 1080	67.500	60.000

Component supported mode

Resolution	Horizontal Frequency(kHz)	Vertical Frequency(Hz)
720 x 480	15.730	59.940
720 x 480	15.750	60.000
720 x 576	15.625	50.000
720 x 480	31.470	59.940
720 x 480	31.500	60.000
720 x 576	31.250	50.000
1280 x 720	44.960	59.940
1280 x 720	45.000	60.000
1280 x 720	37.500	50.000
1920 x 1080	33.720	59.940
1920 x 1080	33.750	60.000
1920 x 1080	28.125	50.000
1920 x 1080	56.250	50.000
1920 x 1080	67.432	59.940
1920 x 1080	67.500	60.000

Component port connecting information

Component ports on the TV	Y	P _B	P _R
Video output ports on DVD player	Y	P _B	P _R
	Y	B-Y	R-Y
	Y	Cb	Cr
	Y	Pb	Pr

! NOTE

- Avoid keeping a fixed image on the set's screen for prolonged periods of time. The fixed image may become permanently imprinted on the screen. Use a screen saver when possible.
- There may be interference relating to resolution, vertical pattern, contrast or brightness in PC mode. Change the PC mode to another resolution or change the refresh rate to another rate or adjust the brightness and contrast on the menu until the picture is clear. If the refresh rate of the PC graphic card can not be changed, change the PC graphic card or consult the manufacturer of the PC graphic card.
- The synchronization input waveform for Horizontal and Vertical frequencies are separate.
- Connect the audio cable from the PC to the Audio input on the TV.
- If using a sound card, adjust PC sound as required.



Make sure to read the Safety Precautions before using the product.
Keep the Owner's Manual (CD) in an accessible place for future reference.
The model and serial number of the TV is located on the back and one side of the TV. Record it below should you ever need service.

MODEL _____

SERIAL _____

To obtain the source code under GPL, LGPL, MPL and other open source licenses, that is contained in this product, please visit <http://opensource.lge.com>.

In addition to the source code, all referred license terms, warranty disclaimers and copyright notices are available for download. LG Electronics will also provide open source code to you on CD-ROM for a charge covering the cost of performing such distribution (such as the cost of media, shipping and handling) upon email request to opensource@lge.com. This offer is valid for three (3) years from the date on which you purchased the product.