



OWNER'S MANUAL LED MONITOR

Please read the safety information carefully before using the product.

LED MONITOR MODEL
32MB25VQ



www.lg.com

P/NO : MFL68300302(1403-REV00) / Printed in Korea

TABLE OF CONTENTS

3 IMPORTANT PRECAUTIONS

- 3 On Safety
 - 3 - Do not Open the Display:
 - 3 - To Avoid Personal Injury :
 - 3 - To Prevent Fire or Hazards:
- 4 On Installation
- 5 On Cleaning
- 5 On Repacking
- 5 On Disposal(Only, LCD Monitor with Hg lamp)

6 LICENSE

7 ASSEMBLING AND PREPARING

- 7 Product Components
- 8 Component and Button Description
 - 8 - How to Use the Joystick Button
- 9 Moving and Lifting the Monitor
- 10 Installing the Monitor
 - 10 - Assembling the Stand Base
 - 11 - Mounting on a Table
 - 11 - Tidying Cables
 - 11 - Using the Kensington Lock
 - 12 - Installing the Guide Spacer
 - 12 - Installing on the Wall mount plate

14 USING THE MONITOR

- 14 Connecting to a PC
 - 14 - D-SUB connection
 - 15 - DVI Connection
 - 15 - HDMI connection
- 16 Connecting AV Devices
 - 16 - HDMI Connection
- 16 Connecting Peripherals
 - 16 - Connecting Headphones

17 USER SETTINGS

- 17 Activating the Main Menu
 - 17 - Main Menu Features
- 18 Customizing Settings
 - 18 - Menu Settings
 - 19 -Picture
 - 20 -Color
 - 21 -Display
 - 21 -Volume
 - 22 -Others
- 23 Reader Setting

24 TROUBLESHOOTING

26 SPECIFICATIONS

- 27 Factory Support Mode (Preset Mode, D-SUB/DVI-D/HDMI PC)
- 27 HDMI TIMING
- 27 Power Indicator

28 PROPER POSTURE

- 28 Proper posture for using the Monitor.

IMPORTANT PRECAUTIONS

This unit has been engineered and manufactured to ensure your personal safety, however improper use may result in potential electrical shock or fire hazards. In order to allow the proper operation of all safeguards incorporated in this display, observe the following basic rules for its installation, use, and servicing.

On Safety

Use only the power cord supplied with the unit. In case you use another power cord, make sure that it is certified by the applicable national standards if not being provided by the supplier. If the power cable is faulty in any way, please contact the manufacturer or the nearest authorized repair service provider for a replacement.

The appliance coupler is used as the disconnect device.

Please make sure the device is installed near the wall outlet to which it is connected and that the outlet is easily accessible.

Operate the display only from a power source indicated in the specifications of this manual or listed on the display. If you are not sure what type of power supply you have in your home, consult with your dealer.

Overloaded AC outlets and extension cords are dangerous. So are frayed power cords and broken plugs.

They may result in a shock or fire hazard. Call your service technician for replacement.

As long as this unit is connected to the AC wall outlet, it is not disconnected from the AC power source even if the unit is turned off.

Do not Open the Display:

- There are no user serviceable components inside.
- There are Dangerous High Voltages inside, even when the power is OFF.
- Contact your dealer if the display is not operating properly.

To Avoid Personal Injury :

- Do not place the display on a sloping shelf unless properly secured.
- Use only a stand recommended by the manufacturer.
- Do not drop an object on or apply impact to the product. Do not throw any toys or objects on the product screen.

It can cause injury to human, problem to product and damage the display.

To Prevent Fire or Hazards:

- Always turn the display OFF if you leave the room for more than a short period of time. Never leave the display ON when leaving the house.
- Keep children from dropping or pushing objects into the display's cabinet openings. Some internal parts carry hazardous voltages.
- Do not add accessories that have not been designed for this display.
- When the display is to be left unattended for an extended period of time, unplug it from the wall outlet.
- In the presence of thunder and lightning, never touch the power cord and signal cable because it can be very dangerous. It can cause electric shock.

On Installation

Do not allow anything to rest upon or roll over the power cord, and do not place the display where the power cord is subject to damage.

Do not use this display near water such as near a bathtub, washbowl, kitchen sink, laundry tub, in a wet basement, or near a swimming pool.

Displays are provided with ventilation openings in the cabinet to allow the release of heat generated during operation. If these openings are blocked, built-up heat can cause failures which may result in a fire hazard.

Therefore, NEVER:

- Block the bottom ventilation slots by placing the display on a bed, sofa, rug, etc.
- Place the display in a built-in enclosure unless proper ventilation is provided.
- Cover the openings with cloth or other material.
- Place the display near or over a radiator or heat source.

Do not rub or strike the Active Matrix LCD with anything hard as this may scratch, mar, or damage the Active Matrix LCD permanently.

Do not press the LCD screen with your finger for a long time as this may cause some afterimages.

Some dot defects may appear as Red, Green or Blue spots on the screen.

However, this will have no impact or effect on the display performance.

If possible, use the recommended resolution to obtain the best image quality for your LCD display. If used under any mode except the recommended resolution, some scaled or processed images may appear on the screen. However, this is characteristic of the fixed-resolution LCD panel.

Displaying a still image for long time on the monitor may leave persistent image or stain on the monitor screen. To avoid this problem, use a screen saver and power off when this product is not used. Persistent image or stain caused by long time usage are not covered by the warranty on this product.

Do not shock or scratch the front and sides of the screen with metallic objects.

Otherwise, it may cause damage to the screen.

Make sure the panel faces forward and hold it with both hands to move. If you drop the product, the damaged product can cause electric shock or fire. Contact an authorized the service center for repair.

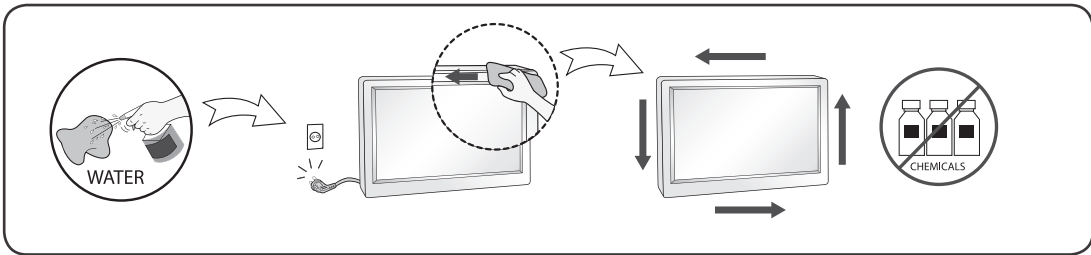
Avoid high temperatures and humidity.

Do not install this product on a wall if it could be exposed to oil or oil mist.

- This may damage the product and cause it to fall.

On Cleaning

- Unplug the display before cleaning the face of the display screen.
- Use a slightly damp (not wet) cloth. Do not use an aerosol directly on the display screen because over-spraying may cause electrical shock.
- When cleaning the product, unplug the power cord and scrub gently with a soft cloth to prevent scratching. Do not clean with a wet cloth or spray water or other liquids directly onto the product. An electric shock may occur. (Do not use chemicals such as benzene, paint thinners or alcohol)
- Spray water onto a soft cloth 2 to 4 times, and use it to clean the front frame; wipe in one direction only. Too much moisture may cause staining.



On Repacking

- Do not throw away the carton and packing materials. They make an ideal container in which to transport the unit. When shipping the unit to another location, repack it in its original material.

On Disposal(Only, LCD Monitor with Hg lamp)

- The fluorescent lamp used in this product contains a small amount of mercury.
- Do not dispose of this product with general household waste.
- Disposal of this product must be carried out in accordance to the regulations of your local authority.

LICENSE

Each model has different licenses. Visit www.lg.com for more information on the license.

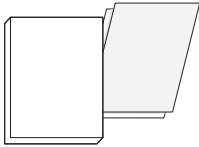


The terms HDMI and HDMI High-Definition Multimedia Interface, and the HDMI logo are trademarks or registered trademarks of HDMI Licensing LLC in the United States and other countries.

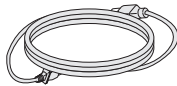
ASSEMBLING AND PREPARING

Product Components

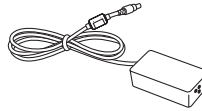
Check your product box for the following items. If there are any missing accessories, contact the local dealer where you purchased your product. The illustrations in this manual may differ from the actual product and accessories.



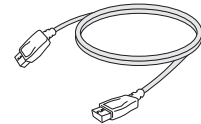
**Book(Owner's Manual)
/ Card**



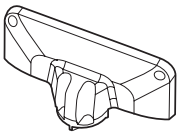
Power Cord



AC-DC Adapter



HDMI Cable



Stand Body



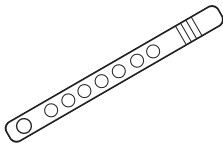
Stand Base



**Stand Screws
2EA, P5 x 25**



**Stand Screws
2EA, M4 x 20**



Cable holder



CAUTION

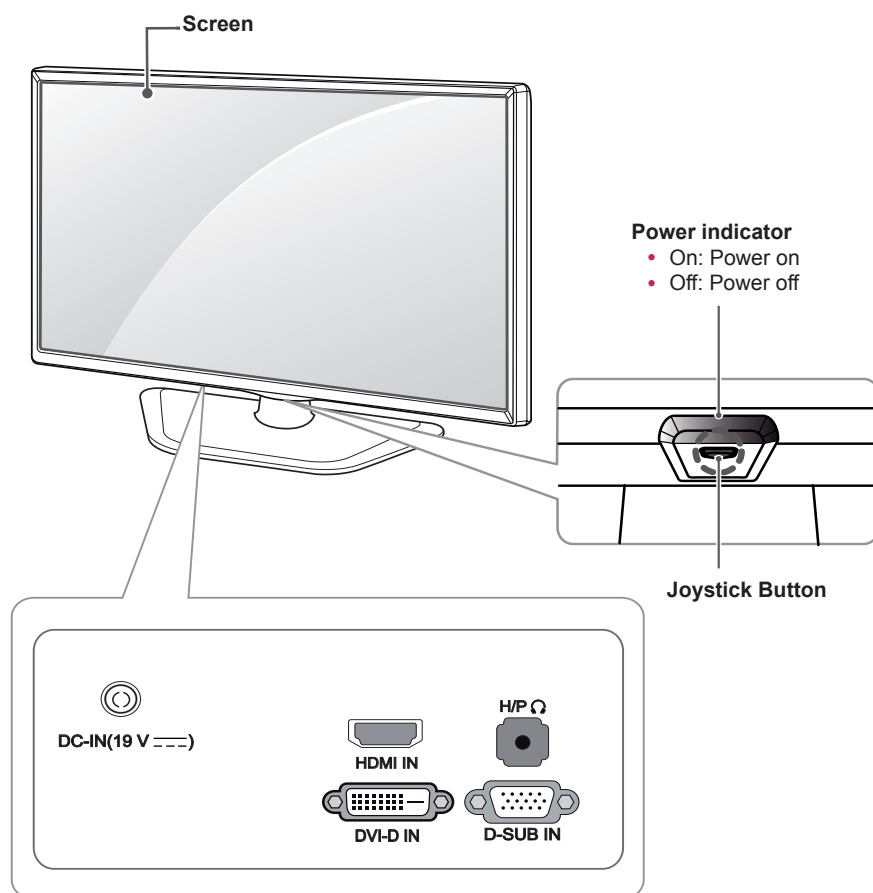
- Always use genuine components to ensure safety and product performance.
- The product warranty will not cover damage or injury caused by the use of counterfeit components.



NOTE

- Note that the components may look different from those shown here.
- Without prior notice, all information and specifications in this manual are subject to change to improve the performance of the product.
- To purchase optional accessories, visit an electronics store or online shopping site or contact the retail store where you purchased the product.
- The DisplayPort cable may not be available in some areas.

Component and Button Description



NOTE

- The Joystick Button is located at the bottom of the monitor.

How to Use the Joystick Button

You can easily control the functions of the monitor by pressing the Joystick Button or moving it left/right with your finger.

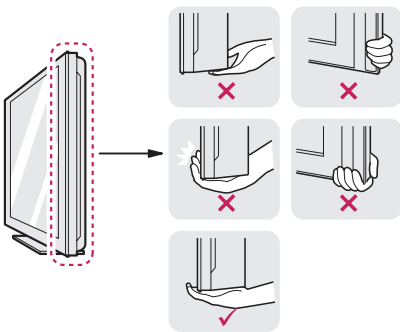
Basic Functions

		Power on	Press the Joystick Button once with your finger to turn on the monitor.
		Power off	Press and hold the Joystick Button once with your finger to turn off the monitor.

Moving and Lifting the Monitor

When moving or lifting the monitor, follow these instructions to prevent the monitor from being scratched or damaged and to ensure safe transportation regardless of its shape or size.

- It is advisable to place the monitor in the original box or packing material before attempting to move it.
- Before moving or lifting the monitor, disconnect the power cord and all cables.
- Hold the top and bottom of the monitor frame firmly. Do not hold the panel itself.



- When holding the monitor, the screen should face away from you to prevent it being scratched.



- When moving the monitor, avoid any strong shock or vibrations to the product.
- When moving the monitor, keep it upright, never turn the monitor on its side or tilt it sideways.

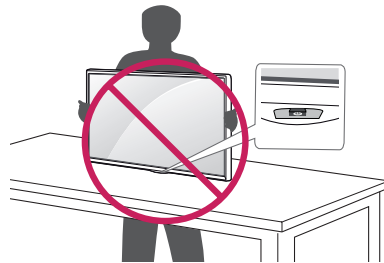


CAUTION

- As far as possible, avoid touching the monitor screen. This may result in damage to the screen or some of the pixels used to create images.



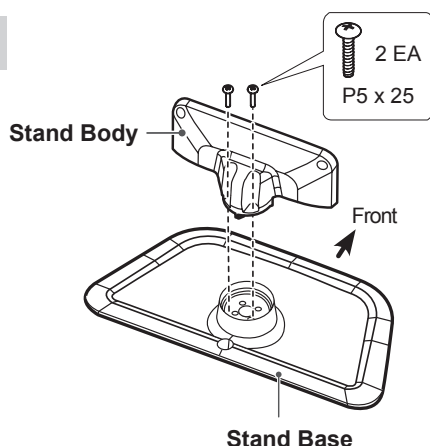
- If you use the monitor panel without the stand base, its Joystick Button may cause the monitor to become unstable and fall, resulting in damage to the monitor or human injury. In addition, this may cause the Joystick Button to malfunction.



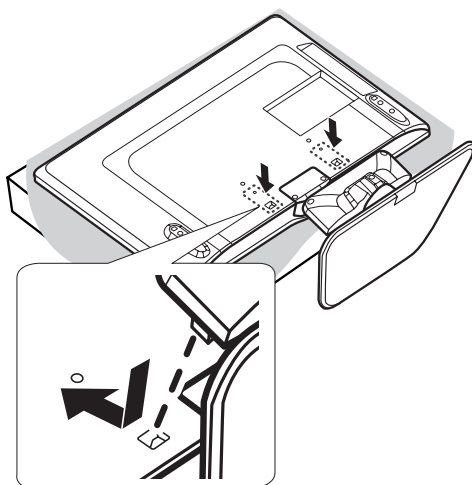
Installing the Monitor

Assembling the Stand Base

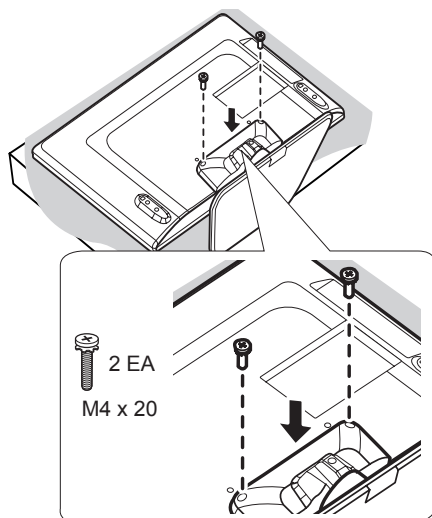
1



2



3



CAUTION

- Illustrations in this document represent typical procedures, so they may look different from the actual product.
- To protect the screen from scratches, cover the surface with a soft cloth.
- Applying excessive force when tightening screws may cause damage to the monitor. Damage caused in this way will not be covered by the product warranty.
- Do not carry the monitor upside down by just holding the base. This may cause the monitor to fall off the stand and could result in personal injury.
- When lifting or moving the monitor, do not touch the monitor screen. The force applied to the monitor screen may cause damage to it.
- If you use the monitor panel without the stand base, its Joystick Button may cause the monitor to become unstable and fall, resulting in damage to the monitor or human injury. In addition, this may cause the Joystick Button to malfunction.



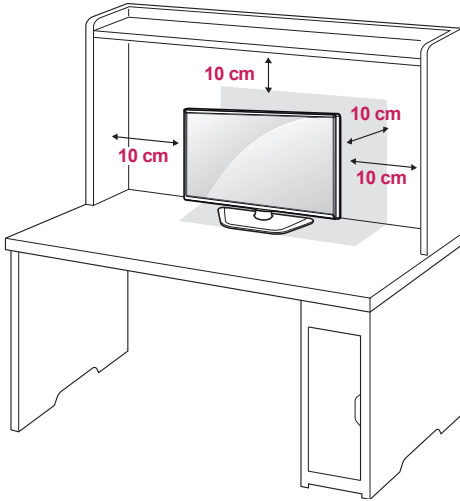
NOTE

- Remove the stand before installing the Monitor on a wall mount by performing the stand attachment in reverse.

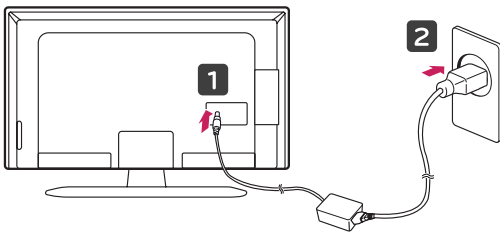
Mounting on a Table

- 1 Lift and tilt the Monitor into its upright position on a table.

Leave a 10 cm (minimum) space from the wall for proper ventilation.



- 2 Connect the power adapter to the monitor and then plug the power cord into the wall outlet.



- 3 Press the ⏻ (Power) button on the back of the monitor to turn it on.

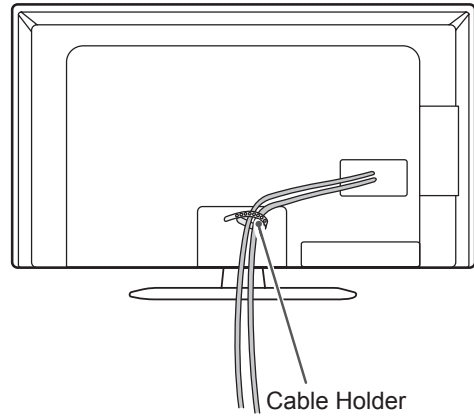


CAUTION

- Unplug the power cord prior to moving or installing the monitor. There is risk of electric shock.

Tidying Cables

Gather and bind the cables with the supplied cable holder.

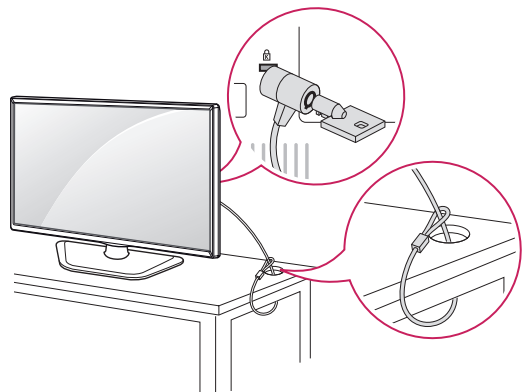


Using the Kensington Lock

The connector for the Kensington lock is located at the rear of the monitor.

For more information on installation and usage, refer to the Kensington lock user manual or visit the website at <http://www.kensington.com>.

Connect the monitor to the table with the Kensington lock cable.



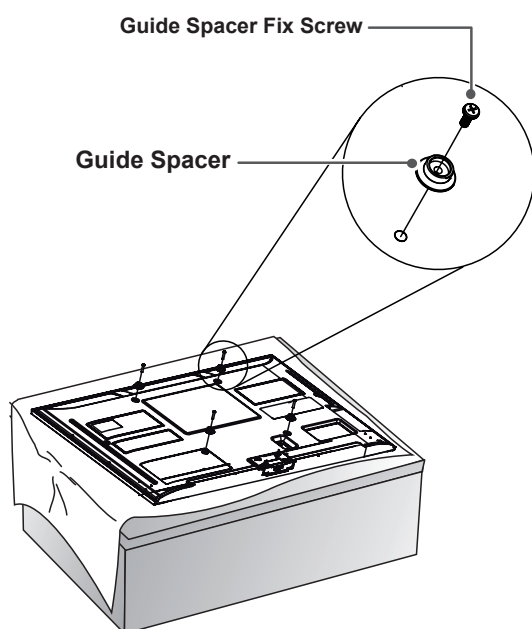
NOTE

- Use of the Kensington lock is optional. The accessories can be purchased at your local electronics store.

Installing the Guide Spacer

This monitor supports the specification of the standard guide spacer or compatible device.

- 1 Place the screen face down. To protect the screen from scratches, cover the surface with a soft cloth.
- 2 Place the guide spacer onto the monitor and align it with the screw holes.
- 3 Using a screwdriver, tighten the four screws to fix the plate onto the monitor.

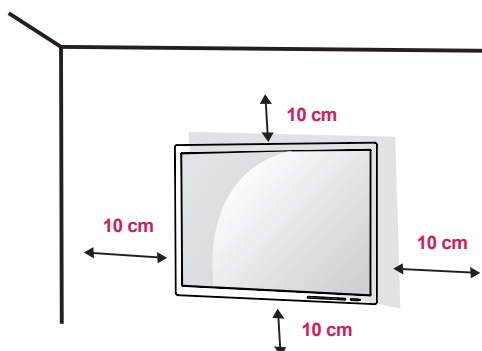


! NOTE

- The guide spacer is sold separately.
- For more information on installation, refer to the wall mount plate's installation guide.
- Be careful not to use excessive force when mounting the wall mount plate, as this can damage the monitor's screen.

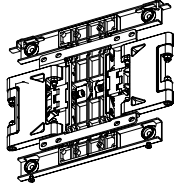
Installing on the Wall mount plate

Install the monitor at least 10 cm away from the wall and leave about 10 cm of space at each side of the monitor to ensure sufficient ventilation. Detailed installation instructions can be obtained from your local retail store. Alternatively, please refer to the manual for how to install and set up a tilting wall mounting bracket.

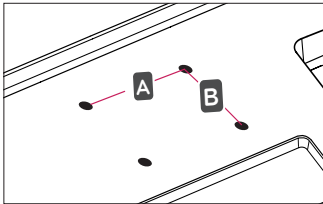


To install the monitor to a wall, attach a Wall mount plate (optional) to the back of the monitor. Make sure that the Wall mount plate is securely fixed to the monitor and to the wall.

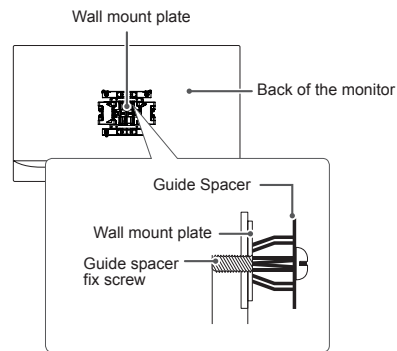
- 1 Use the screws and Wall mount plate that conform to VESA standards.
- 2 If you use screws longer than the standard length, it may damage the inside of the product.
- 3 A non-VESA standard screw may damage the product and cause the monitor to fall. LG Electronics is not liable for any accidents relating to the use of non-standard screws.
- 4 VESA compatible only with respect to screw mounting interface dimensions and mounting screw specifications.
- 5 Use the guide spacer and fixing screws that conform to VESA standards.

Model name	LSW240B (Sold Separately)
	
Width (mm)	281
Height (mm)	234
Length (mm)	14
Weight (kg)	1.5
W/Packing Weight(kg)	2.2
Max Tensile load(kg)	40
VESA Standard	200 X 200
Required Screws	4

- VESA (A x B)

**CAUTION**

- Unplug the power cord before moving or installing the monitor to avoid electric shock.
- Installing the monitor on the ceiling or on a slanted wall may result in the monitor falling off, which could lead to injury. Use an authorized LG wall mount and contact the local dealer or qualified personnel.
- Applying excessive force when tightening screws may cause damage to the monitor. Damage caused in this way will not be covered by the product warranty.
- Use the Wall mount plate and screws that conform to VESA standards. Damage caused by the use or misuse of inappropriate components will not be covered by the product warranty.
- When measured from the back of the monitor, the length of each installed screw must be 8 mm or less.

**NOTE**

- Use the screws specified by VESA standards.
- The wall mount kit includes the installation guide and all necessary parts.
- The Wall mount plate is optional. You can obtain optional accessories from your local dealer.
- The length of the screw may differ for each wall mounting bracket. Be sure to use the proper length.
- For more information, please refer to the user manual for the wall mounting bracket.

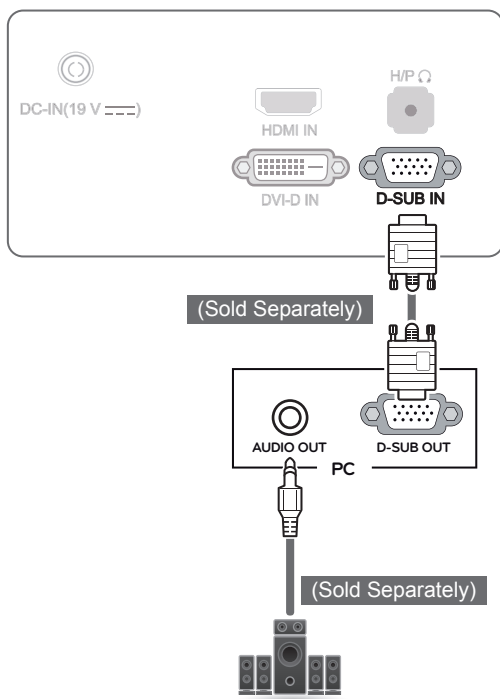
USING THE MONITOR

Connecting to a PC

- This monitor supports the *Plug and Play feature.
*Plug and Play: A feature that allows you to add a device to your computer without having to reconfigure anything or install any manual drivers.

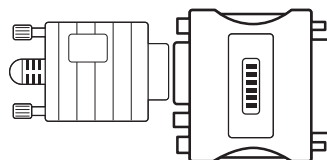
D-SUB connection

Transmits analog video from your PC to the Monitor. Connect the PC and the Monitor with the D-sub 15 pin signal cable as shown in the following illustrations.



NOTE

- When using a D-Sub signal input cable connector for Macintosh



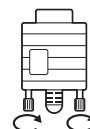
Mac adapter

For Apple Macintosh use, a separate plug adapter is needed to change the 15 pin high density (3 row) D-SUB VGA connector on the supplied cable to a 15 pin 2 row connector.

- When connecting the power cord to the outlet, use a grounded (3-hole) multi-socket or a grounded power outlet.
- The monitor may flicker when turned on in an area of low temperature. This is normal.
- Sometimes red, green, or blue spots may appear on the screen. This is normal.

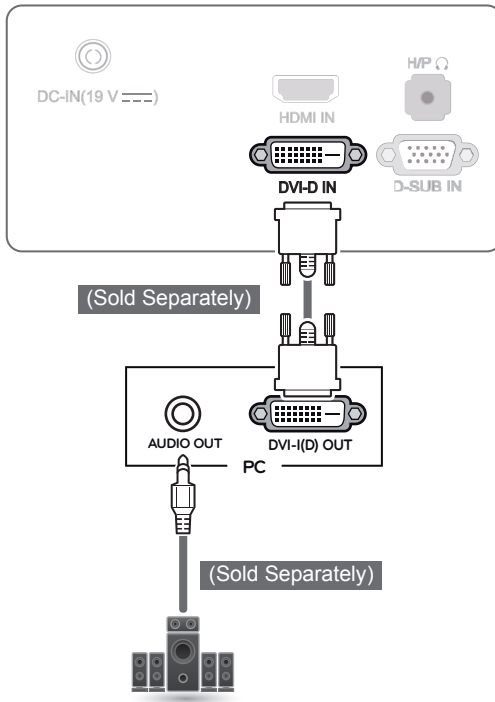
CAUTION

- Connect the input signal cable and turn it in the direction of the arrow as shown in the illustration. To prevent disconnection, secure the cable tightly.
- Do not press the screen for a prolonged time. This may cause image distortion.
- Do not display a still image on the screen for a prolonged time. This may cause image retention. Use a screensaver if possible.



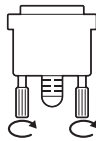
DVI Connection

Transmits digital video signals to the monitor. Connect the monitor using the DVI cable as illustrated below.



CAUTION

- Connect the input signal cable and turn it in the direction of the arrow as shown in the illustration. To prevent disconnection, secure the cable tightly.

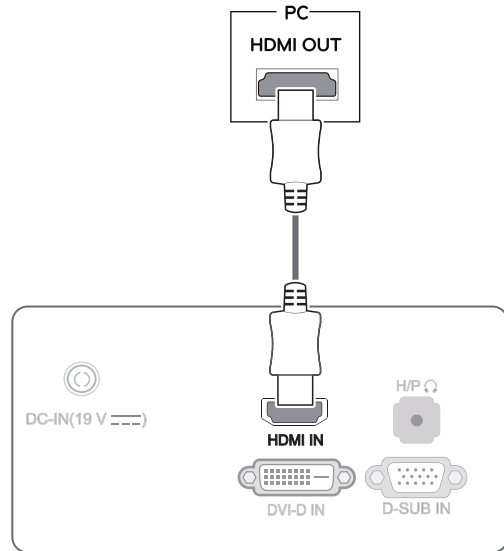


NOTE

- Using a DVI to HDMI cable may cause compatibility issues.

HDMI connection

Transmits digital video and audio signals from your PC to the monitor. Connect your PC to the monitor using the HDMI cable as shown in the illustration below.



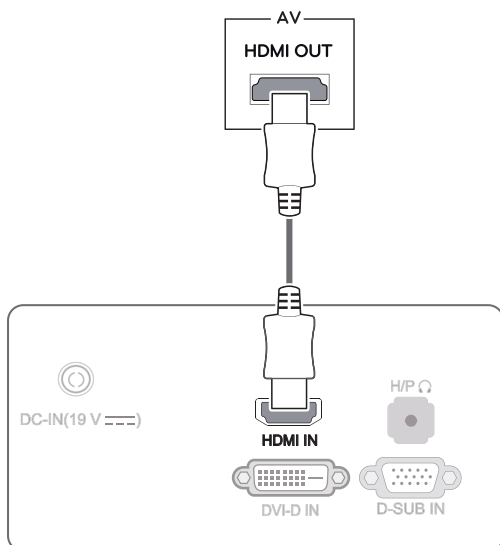
CAUTION

- Connecting your PC to the monitor using the HDMI cable may cause device compatibility issues.
- Using a DVI to HDMI cable may cause compatibility issues.

Connecting AV Devices

HDMI Connection

HDMI transmits digital video and audio signals from your AV device to the monitor. Connect your AV device to the monitor using the HDMI cable as shown in the illustration below.



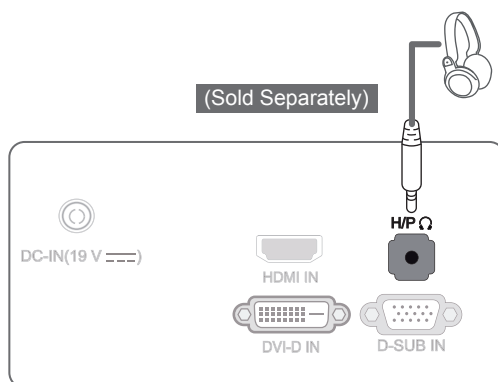
! NOTE

- Using a DVI to HDMI cable may cause compatibility issues.

Connecting Peripherals

Connecting Headphones

Connect peripherals to the monitor via the headphones port. Connect as illustrated.

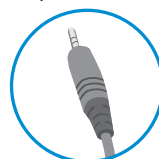


! NOTE

- Peripheral devices are sold separately.
- If you use [Angled] earphones, it may cause a problem with connecting another external device to the monitor. Therefore, it is recommended to use [Straight] earphones.



Angled



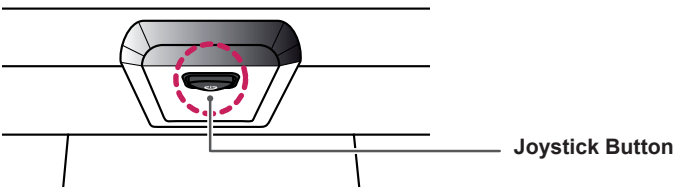
Straight

- Depending on the audio settings of the PC and external device, headphones and speaker functions may be limited.

USER SETTINGS

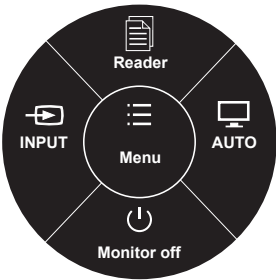
Activating the Main Menu

- 1 Press the Joystick Button on the bottom of the monitor.
- 2 Move the joystick up/down (▲/▼) and left/right(◀/▶) to set the options.
- 3 Press the Joystick Button once more to exit the main menu.



Button	Menu Status		Description
	Main menu disabled		Enables the main menu.
	Main menu enabled		Exits the main menu. (Holding down the button to turn off the monitor: You can turn off the monitor this way at any time, including when the OSD is on.)
	◀	Main menu enabled	Adjusts the menu.
		Main menu disabled	Enters the input feature.
	▶	Main menu enabled	Adjusts the menu.
		Main menu disabled	Enters the auto features.
	▲	Main menu enabled	Move the upper menu.
		Main menu disabled	Enters the reader feature.
	▼	Main menu enabled	Move the menu.
		Main menu disabled	Turns off the monitor.

Main Menu Features



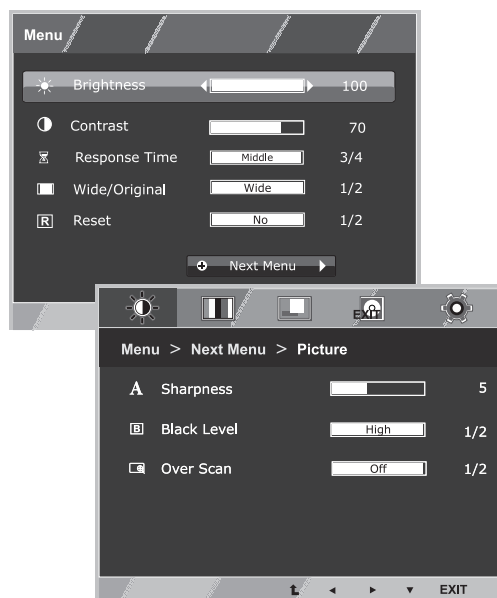
⦿ Long press: Monitor off

Main Menu	Description
Menu	Configures the screen settings.
AUTO	Adjusts display settings. (Only supported in Analog Mode)
Reader	Adjusts color for comfortable text file reading.
INPUT	Change the Input mode.
Monitor off	Turns off the monitor.

Customizing Settings

Menu Settings

- 1 To view the **OSD menu**, press the **Joystick Button** at the bottom of the monitor and then enter the **Menu**.
- 2 Set the options by moving the Joystick Button left, right, or down (◀/▶/▼).
- 3 Select the **"Next Menu"** button to enter the more option settings.
- 4 Move the joystick up (▲) to leave the OSD menu until you exit.
To return to the upper menu or set other menu items, move the joystick up (▲).

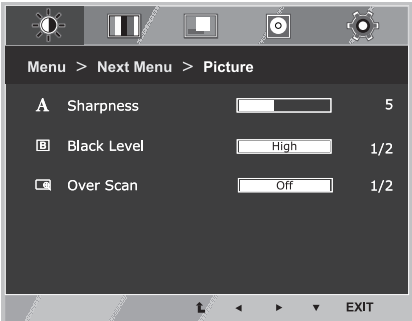


Each option is explained below.

Menu	Description	
Brightness	To adjust the brightness of the screen.	
Contrast	To adjust the contrast of the screen.	
Response Time	You can set a response time for displayed pictures based on the speed of the screen. For a normal environment, it is recommended that you use 'Off'. For a fast-moving picture, it is recommended that you use 'High'.	
Wide/Original	Wide	Switch to full screen mode according to input image signal.
	Original	Change the input image signal ratio to original. * This function works only if input resolution is lower than Monitor ratio (16:9).
Reset	Restore all factory default settings. Move the joystick ◀ or ▶ to reset immediately.	
Picture	Sharpness	To adjust the clearness of the screen .
	Black Level	To set offset level. (Only for HDMI input)
	Overscan	To improve the clarity and stability of the screen. (Only for HDMI input)
Color	Gamma	To customize the color of the screen.
	Color Temp	
Display (for RGB only).	Horizontal	To adjust the position of the screen.
	Vertical	
	Clock	To improve the clarity and stability of the screen.
	Phase	
Audio	Volume	To adjust the volume. (Only for HDMI input)
Others	Language	To customize the screen status for a user's operating environment.
	Power Indicator	

Picture

- 1 To view the **OSD menu**, press the **Joystick Button** at the bottom of the monitor and then enter the **Menu**.
- 2 Select the "**Next Menu**" button to enter the more option settings.
- 3 Go to **Picture** by moving the joystick.
- 4 Set the options by moving the Joystick Button left, right, or down(◀/▶/▼).
- 5 Move the joystick up (▲) to leave the OSD menu until you exit.
To return to the upper menu or set other menu items, move the joystick up (▲).

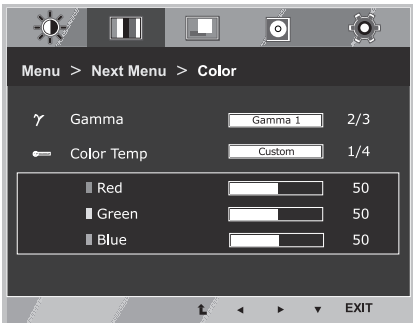


Each option is explained below.

Menu > Next Menu > Picture	Description
Sharpness	To adjust the clearness of the screen.
Black Level	You can set the offset level. If you select 'High', the screen will be bright and if you select 'Low', the screen will be dark.(Only for HDMI input) * Offset : As the criteria for video signal, it is the darkest screen the monitor can show.
Over scan	To select the range of output image for DTV timing in HDMI input.(Only for HDMI input) Recommend overscan function to turn on when connect AV equipment.

Color

- 1 To view the **OSD menu**, press the **Joystick Button** at the bottom of the monitor and then enter the **Menu**.
- 2 Select the **"Next Menu"** button to enter the more option settings.
- 3 Go to **Color** by moving the joystick.
- 4 Set the options by moving the Joystick Button left, right, or down(◀/▶/▼).
- 5 Move the joystick up (▲) to leave the OSD menu until you exit.
To return to the upper menu or set other menu items, move the joystick up (▲).

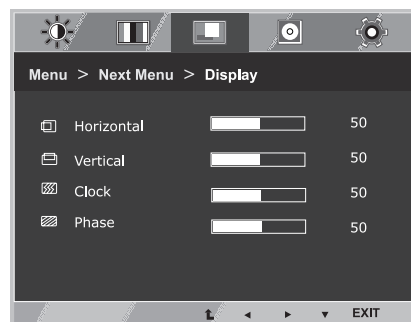


Each option is explained below.

Menu > Next Menu > Color		Description
Gamma		Set your own gamma value. : Gamma 0, Gamma 1, Gamma 2 on the monitor, high gamma values display whitish images and low gamma values display blackish images.
Color Temp	Custom	<ul style="list-style-type: none">• Red : Set your own red color levels.• Green : Set your own green color levels.• Blue : Set your own blue color levels.
	Warm	Set the screen to warm color temperature (more red).
	Medium	Set the screen to medium color temperature.
	Cool	Set the screen to cool color temperature (more blue).

Display

- 1 To view the **OSD menu**, press the **Joystick Button** at the bottom of the monitor and then enter the **Menu**.
- 2 Select the "**Next Menu**" button to enter the more option settings.
- 3 Go to **Display** by moving the joystick.
- 4 Set the options by moving the Joystick Button left, right, or down(◀/▶/▼).
- 5 Move the joystick up (▲) to leave the OSD menu until you exit.
To return to the upper menu or set other menu items, move the joystick up (▲).



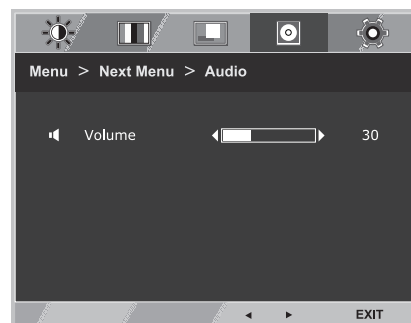
Each option is explained below.

(Only for D-SUB input)

Menu > Next Menu > Display	Description
Horizontal	To move image left and right.
Vertical	To move image up and down.
Clock	To minimize any vertical bars or stripes visible on the screen background. The horizontal screen size will also change.
Phase	To adjust the focus of the display. This item allows you to remove any horizontal noise and clear or sharpen the image of characters.

Volume

- 1 To view the **OSD menu**, press the **Joystick Button** at the bottom of the monitor and then enter the **Menu**.
- 2 Select the "**Next Menu**" button to enter the more option settings.
- 3 Go to **Volume** by moving the joystick.
- 4 Set the options by moving the Joystick Button left, right, or down(◀/▶).
- 5 Move the joystick up (▲) to leave the OSD menu until you exit.
To return to the upper menu or set other menu items, move the joystick up (▲).

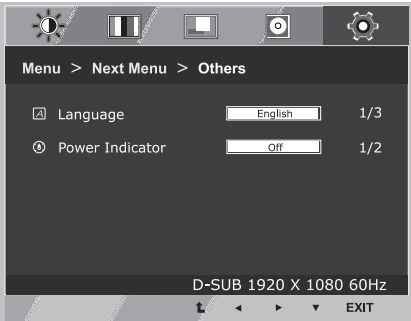


Each option is explained below.

Menu > Next Menu > Audio	Description
Volume	Adjust the volume. (Only for HDMI input)

Others

- 1 To view the **OSD menu**, press the **Joystick Button** at the bottom of the monitor and then enter the **Menu**.
- 2 Select the **"Next Menu"** button to enter the more option settings.
- 3 Go to **Others** by moving the joystick.
- 4 Set the options by moving the Joystick Button left, right, or down(◀/▶).
- 5 Move the joystick up (▲) to leave the OSD menu until you exit.
To return to the upper menu or set other menu items, move the joystick up (▲).

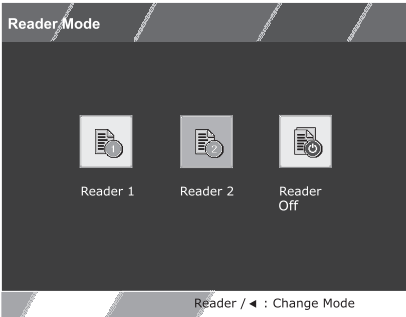


Each option is explained below.

Menu > Next Menu > Others	
Language	To choose the language in which the control names are displayed.
Power Indicator	Use this function to set the power indicator on the bottom side of the monitor to On or Off.If you set Off, it will go off. If you set On at any time, the power indicator will automatically be turned on.

Reader Setting

- 1 Press the Joystick Button on the bottom of the monitor.
- 2 Go to **Reader Mode** by moving the Joystick Button to ▲.
- 3 Configure the options following the instructions that appear in the bottom right corner.



ENGLISH

Each option is explained below.

Reader Mode	Description
Reader 1	Optimizes the screen for browsing newspapers. You can brighten the screen in the OSD menu.
Reader 2	Optimizes the screen for looking at cartoons. You can brighten the screen in the OSD menu.
Reader Off	Reader Mode is off.

TROUBLESHOOTING

Check the following before calling for service.

Nothing is displayed on the screen.	
Is the monitor's power cord plugged in?	<ul style="list-style-type: none"> • Check if the power cord is correctly plugged into the power outlet.
Is the power indicator on?	<ul style="list-style-type: none"> • Check the power cable connection and press the power button.
Is the power on and the power indicator displaying red?	<ul style="list-style-type: none"> • Check that the connected input is enabled (Menu - Input).
Is the power indicator blinking?	<ul style="list-style-type: none"> • If the monitor is in power-saving mode, move the mouse, or press any key on the keyboard, to switch the display on. • Check if the computer is turned on.
Is the OUT OF RANGE message being displayed?	<ul style="list-style-type: none"> • This occurs when signals transferred from the PC (video card) are out of the horizontal or vertical frequency range of the monitor. Please see the Product Specification section of this manual to set the appropriate frequency.
Is the No Signal message being displayed?	<ul style="list-style-type: none"> • This is displayed when the signal cable between the PC and the monitor is missing or disconnected. Check the cable and reconnect it.

The screen retains an image.	
Does image sticking occur even when the monitor is turned off?	<ul style="list-style-type: none"> • Displaying a still image for a prolonged time may cause damage to the screen, resulting in the retention of the image. • To extend the lifetime of the monitor, use a screensaver.



NOTE

- **Vertical Frequency:** In order to display an image, the screen must be refreshed dozens of times per second like a fluorescent lamp.
The number of times the screen is refreshed per second is called vertical frequency or refresh rate and is represented by Hz.
- **Horizontal Frequency:** The time it takes to display one horizontal line is called the horizontal cycle.
The number of horizontal lines displayed in one second can be calculated by dividing one by the horizontal cycle. This is called horizontal frequency and is represented by kHz.

**CAUTION**

- Check **Control Panel ► Display ► Settings** and see if the frequency or the resolution were changed. If yes, readjust the video card to the recommend resolution.
- If the recommended resolution (optimal resolution) is not selected, letters may be blurred and the screen may be dimmed, truncated or biased. Make sure to select the recommend resolution.
- The setting method can differ by computer and O/S (Operation System), and resolution mentioned above may not be supported by the video card performance. In this case, please ask to the computer or the video card manufacturer.

Display image is incorrect.

The screen color is mono or abnormal.

- Check if the signal cable is properly connected and use a screwdriver to fasten if necessary.
- Make sure the video card is properly inserted in the slot.
- Set the color setting higher than 24 bits (true color) at **Control Panel ► Settings**.

The screen blinks.

- Check if the screen is set to interlace mode and if yes, change it to the recommend resolution.

The screen is flickering.

Did you select the appropriate resolution?

- If the selected resolution is HDMI **1080i** 60/50 Hz, the screen may be flickering. Change the resolution to the recommended resolution **1080P**.

SPECIFICATIONS

Display	Screen Type	80cm TFT (Thin Film Transistor) LCD (Liquid Crystal Display) Screen Diagonal length of the screen: 80cm	
	Pixel Pitch	0.36375 mm x 0.36375 mm	
Resolution	Max	1920 x 1080 @ 60 Hz	
	Recommend	1920 x 1080 @ 60 Hz	
Video Signal	Horizontal Frequency	30 kHz to 83 kHz	
	Vertical Frequency	D-SUB IN / DVI-D	56 kHz to 63 kHz
		HDMI IN	56 kHz to 61 kHz
	Synchronization	Separate Sync.	
Input Connector	DVI-D, HDMI IN, D-SUB IN, H/P OUT		
Power Sources	Voltage	19 V --- 2.5 A	
	Power Consumption(Typical)	On Mode : 47 W(Typ.) Sleep Mode ≤ 0.5 W Off Mode ≤ 0.5 W	
AC-DC Adapter	LCAP35 type, manufactured by Lien Chang Electronic DA-48G19 type, manufactured by APD		
	OUTPUT: 19 V --- 2.53 A		
Environmental conditions	Operating Temperature	10°C to 35 °C	
	Operating Humidity	10 % to 80 %	
	Storage Temperature	-20°C to 60 °C	
	Storage Humidity	5 % to 90 % non-Condensing	
Dimensions (Width x Height x Depth)	With Stand	730.6 mm x 493.4 mm x 206.1 mm	
	Without Stand	730.6 mm x 441.8 mm x 58.2 mm	
Weight	Without Packaging	5.8 kg	

Product specifications shown above may be changed without prior notice due to upgrade of product functions.

Factory Support Mode (Preset Mode, D-SUB/DVI-D/HDMI PC)

Display Modes (Resolution)	Horizontal Frequency(kHz)	Vertical Frequency(Hz)	Polarity(H/V)	Remarks
640 x 480	31.469	59.94	-/-	
800 x 600	37.879	60.317	+/+	
1024 x 768	48.363	60	-/-	
1280 x 1024	63.981	60.02	+/+	
1680 x 1050	65.29	59.954	-/+	
1920 x 1080	67.50	60	+/+	Recommend Mode

HDMI TIMING

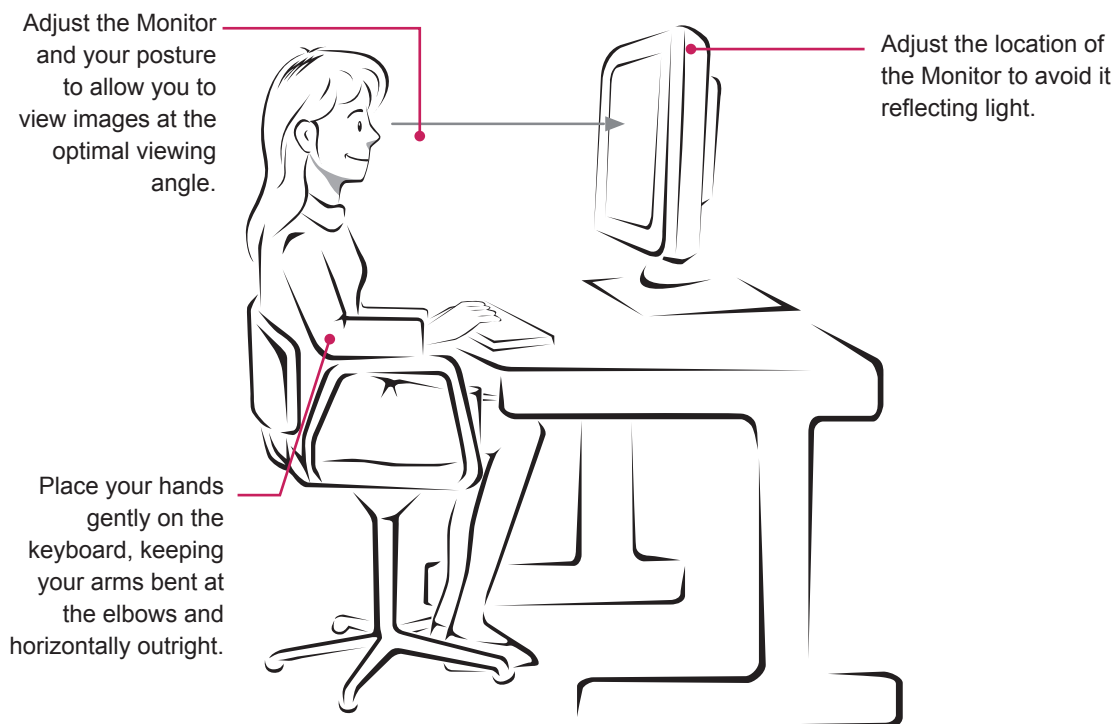
Display Modes (Resolution)	Horizontal Frequency(kHz)	Vertical Frequency(Hz)	Remarks
480P	31.5	60	
576P	31.25	50	
720P	37.5	50	
720P	45	60	
1080P	56.25	50	
1080P	67.5	60	Recommend Mode

Power Indicator

Mode	LED Color
On Mode	White
Sleep Mode	Blinking White
Off Mode	Off

PROPER POSTURE

Proper posture for using the Monitor.





This device meets the EMC requirements for home appliances (Class B) and is intended for home usage. This device can be used in all regions. Read the owner's manual carefully and keep it at hand. Please note that the label attached to the product provides information for technical support.

Model _____

Serial No. _____