



SMART TV Quick Setup Guide

Please read this manual carefully before operating your set and retain it for future reference.

* Image shown may differ from your TV.

* Image shown on a PC or mobile phone may vary depending on the OS(Operating System).

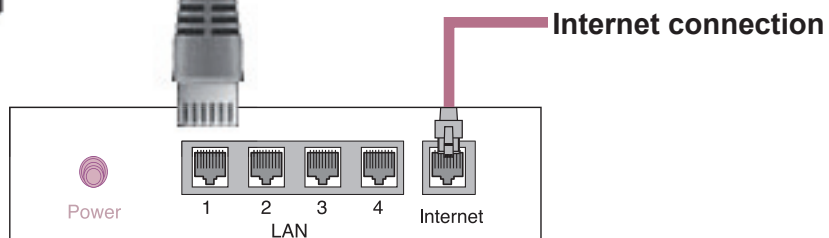
ENGLISH

Wireless Network Connection



wireless router

Wired Network Connection

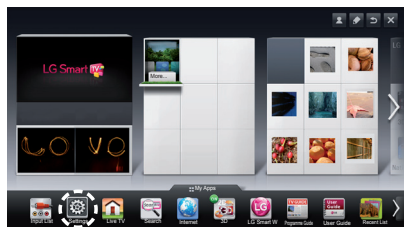


Wired router

NETWORK SETTING

Premium Apps are pre-installed on the TV. These may vary by country.

- 1 Press the **HOME** button to access the HOME menu. Select **Settings** and press **Wheel(OK)**.

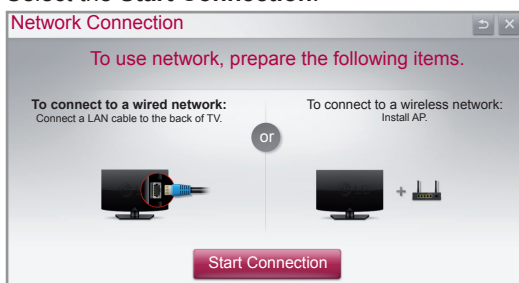


Settings

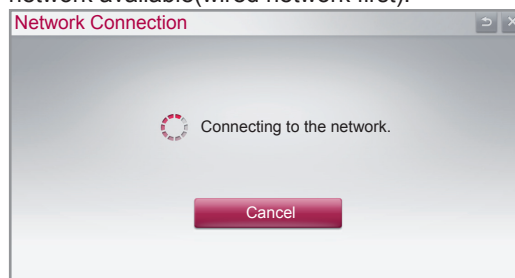
- 2 Select the **NETWORK** → **Network Connection** menu.



- 3 Select the **Start Connection**.




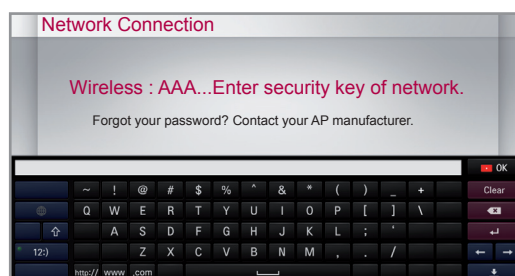
- 4 The device automatically tries to connect to the network available(wired network first).



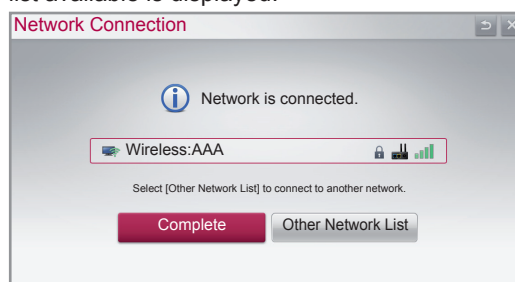
If you select **Cancel** or it fails to connect to the network, the network list available is displayed. Choose the network you want.



For wireless routers that have the  symbol, you need to enter the security key.




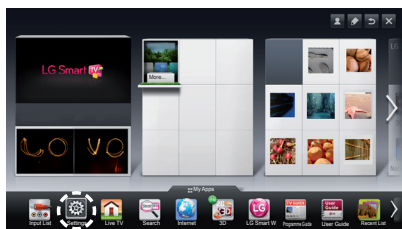
- 5 The connected network is displayed. Select **Complete** to confirm the network connection. If you Select the **Other Network List**, the network list available is displayed.



Troubleshooting Network Problems

ENGLISH

- 1 Press the  **HOME** button to access the HOME menu.

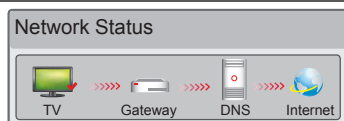


- 2 Select the **NETWORK** → **Network Status** menu.



Follow the instructions below that correlate to your network status.

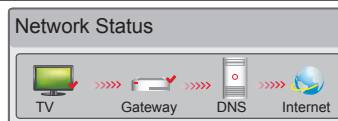
Check the TV or the router.



When an appears TV.

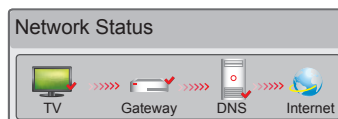
- 1 Check the connection status of TV, AP and cable modem.
- 2 Power off and power on TV, AP and cable modem.
- 3 If you are using a static IP, enter IP directly.
- 4 Contact internet companies or AP companies.
 - Additional points to check when using a wireless connection
 - 1 Check the password for the wireless connection in the router settings window.
 - 2 Change the router SSID (network name) or the wireless channel.

Check the router or consult your Internet service provider.



When an appears TV and Gateway.

- 1 Unplug the power cord of the AP, cable modem and try to connect after 5 seconds.
- 2 Initialise(Reset) the AP or cable modem.
- 3 Contact internet companies or AP companies.



When an appears TV, Gateway and DNS.

- 1 Unplug the power cord of the AP, cable modem and try to connect after 5 seconds.
- 2 Initialise(Reset) the AP or cable modem.
- 3 Check that the MAC address of the TV/router is registered with your Internet service provider. (The MAC address displayed on the right pane of the network status window should be registered with your Internet service provider.)
- 4 Check the router manufacturer's website to make sure your router has the latest firmware version installed.

SmartShare PC SW Installing & Setting

Install the **SmartShare PC SW(DLNA)** and **SmartShare PC SW(MediaLink)** programme on your PC.

- 1 Go to **www.lg.com**. Then, select your region.
- 2 Select **Support**. Then, Search for your model.
- 3 Select **Drivers & Software** or **Software Update**. Then, select **SmartShare PC SW(DLNA)** and **SmartShare PC SW(MediaLink)**.
- 4 You can run the programme when installation is complete.

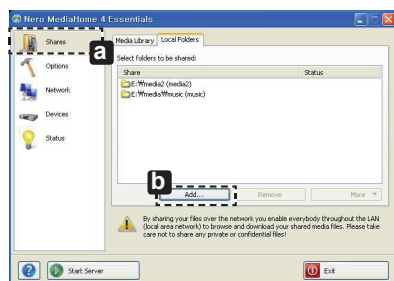


NOTE

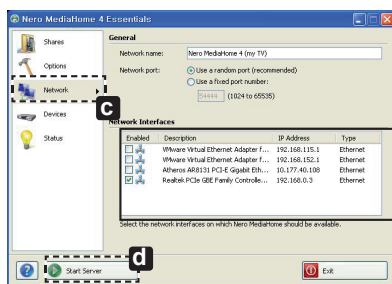
- DLNA or Media Link service is only available if TV and other devices are connected via a single router.

ENGLISH

DLNA Connection to PC



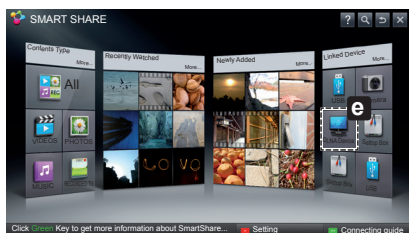
- 1 Start Nero Media Home 4 and enable shared folders on your PC.
 - » **a** : Click the Share button.
 - » **b** : Click the Add button and select the desired folder.
(Read the Owner's Manual to find out which file formats support the DLNA function.)



- 2 Make sure that the PC network device is selected.

Enabled	Description	IP Address	Type
<input type="checkbox"/>	VMware Virtual Ethernet Adapter f...	192.168.115.1	Ethernet
<input type="checkbox"/>	VMware Virtual Ethernet Adapter f...	192.168.152.1	Ethernet
<input type="checkbox"/>	Atheros AR8131 PCI-E Gigabit Eth...	10.177.40.108	Ethernet
<input checked="" type="checkbox"/>	Realtek PCIe GBE Family Controlle...	192.168.0.3	Ethernet

- » **c** : Click the Network button and check that the correct PC network device is selected. (At least one network device must be selected.)
- » **d** : Click the Start Server button.



- 3 You can view and enjoy shared content by using the TV's Smart Share function.

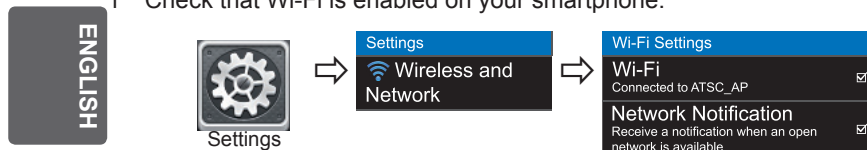


DLNA Device

- » **e** : Select the DLNA Device on the TV's Smart Share Card to enjoy content from your PC.

DLNA Connection to Smartphone

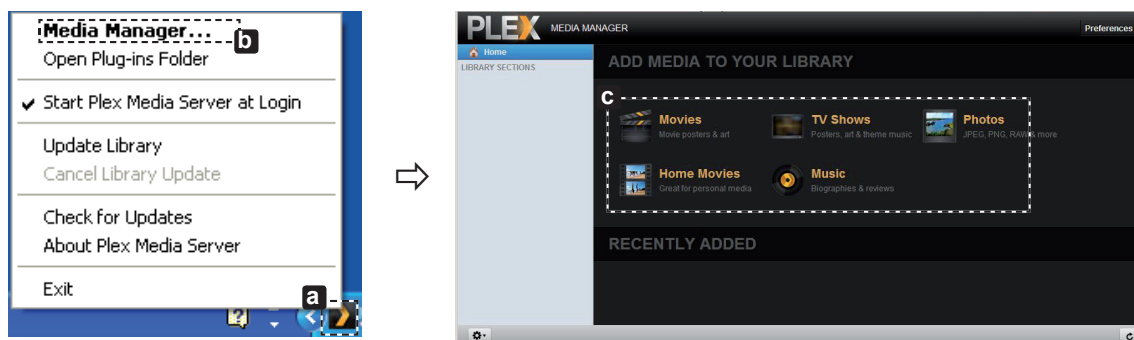
- 1 Check that Wi-Fi is enabled on your smartphone.



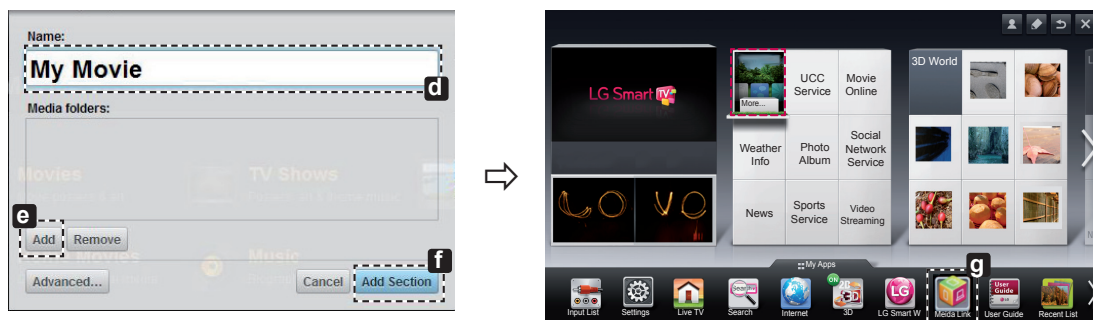
- 2 Install/run the app for sharing content on your smartphone (It's called SmartShare on LG phones).
- 3 Enable your smartphone to share content files with other devices.
- 4 Select the file type you want to play (movie, audio or photo).
- 5 Select a movie, music or photo file to play on the TV.
- 6 Add the selected file to the playlist.
- 7 Select a TV model name on which to play the files. (The TV model name is labelled on the rear side of the panel.)
- 8 Play the media file to view and enjoy it on your TV.

Media Link Connection

- 1 After installing the programme, right-click the Plex icon **(a)** on your PC's taskbar. Click Media Manager **(b)**... and select the type **(c)** you want.



- 2 Name **(d)** : Enter the section name to be displayed on the screen.
Add **(e)** : Select a folder in the PC to add. Create a folder to store files you want to watch on TV.
Add Section **(f)** : Complete to create the section.
Turn on the TV and select Media Link **(g)** from the Home menu.

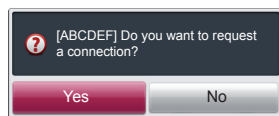



* For more information on file sharing, visit www.plexapp.com/medialink.

Wi-Fi Screen Share Setting

HOME →  **Settings** → **NETWORK** → **Wi-Fi Screen Share**

The **Wi-Fi Screen Share** function supports wireless connection technology, such as Wi-Fi Direct and WiDi. With Smart Share, you can share files or screens of devices connected to **Wi-Fi Screen Share**.



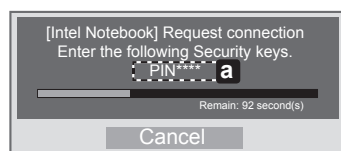
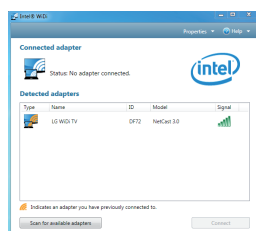
- 1 If **Wi-Fi Screen Share** is set to **On**, a list of available devices appears.
» To use **Wi-Fi Screen Share**, go to  **Settings** → **NETWORK** and set **Wi-Fi Screen Share**(a) to **On**.
- 2 When you are prompted to request connection, select **Yes**. **Wi-Fi Screen Share** is now connected to your TV.

*If you are not using **Wi-Fi Screen Share** to minimize the interference between Wi-Fi devices, it is recommended to set **Wi-Fi Screen Share**(a) to **Off**. You can only use devices that support **Wi-Fi Screen Share**.

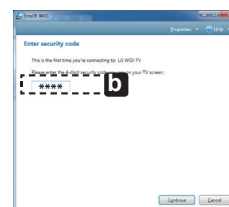
WiDi (Wireless Display) Setting

WiDi represents Wireless Display. It is a system that received AV stream that can be played back on the laptop supporting Intel WiDi. It can be used only for Live TV and external input (Composite/Component/RGB/HDMI). Other than these modes, your computer cannot detect LG Smart TV.

- 1 **Wi-Fi Screen Share** is set to **On**. Connect your laptop to AP. (Without AP, it is possible to this function; it is recommended to connect to AP.) Your laptop runs the Intel WiDi programme.
- 2 It detects LG Smart TVs available, which supports WiDi. In the list, select the TV you want and click Connect. Enter the 4-digit number(a) shown on the screen into the input field(b) on your laptop and then click Continue.



TV Screen



Notebook Screen

- 3 The TV screen appears on the laptop screen within 10 seconds. The wireless environment may affect the screen display. If the connection is poor, the Intel WiDi connection may be lost.

* LG TV is not need to register.

* TV sound setting for **Digital Sound Out** is set to **PCM**.

* For more information on Intel WiDi, visit <http://intel.com/go/widi>

* On the **Wi-Fi Screen Share**, WiDi device is not searched. Close the **Wi-Fi Screen Share**, then search Wi-Di.

Updating the TV Firmware

HOME →  **Settings** → **SUPPORT** → **Software Update**

Uses Software Update to check and obtain the latest version. If not updated, certain functions may not work properly. It is also possible to check manually for available updates.

Software Update	Set it to On . When an updated file is detected, the file is downloaded automatically. When the file download is complete, the software update window appears.
Check Update Version	Checks the latest update version installed. When a new update is available, the download process can be performed manually.



NOTE

- The latest version can be obtained via the digital broadcast signal or an internet connection.
- Changing the programme while downloading the software via a digital broadcast signal interrupts the download process. Returning to the initial programme allows downloading to resume.
- If software is not updated, certain functions may not work properly.
- [Only Nordic models]
You can check whether LG OTA service is available in the DTV channel by pressing the red button as you see the "Update is detected." message under the channel banner.



Please call LG Customer Service if you experience any problems.