

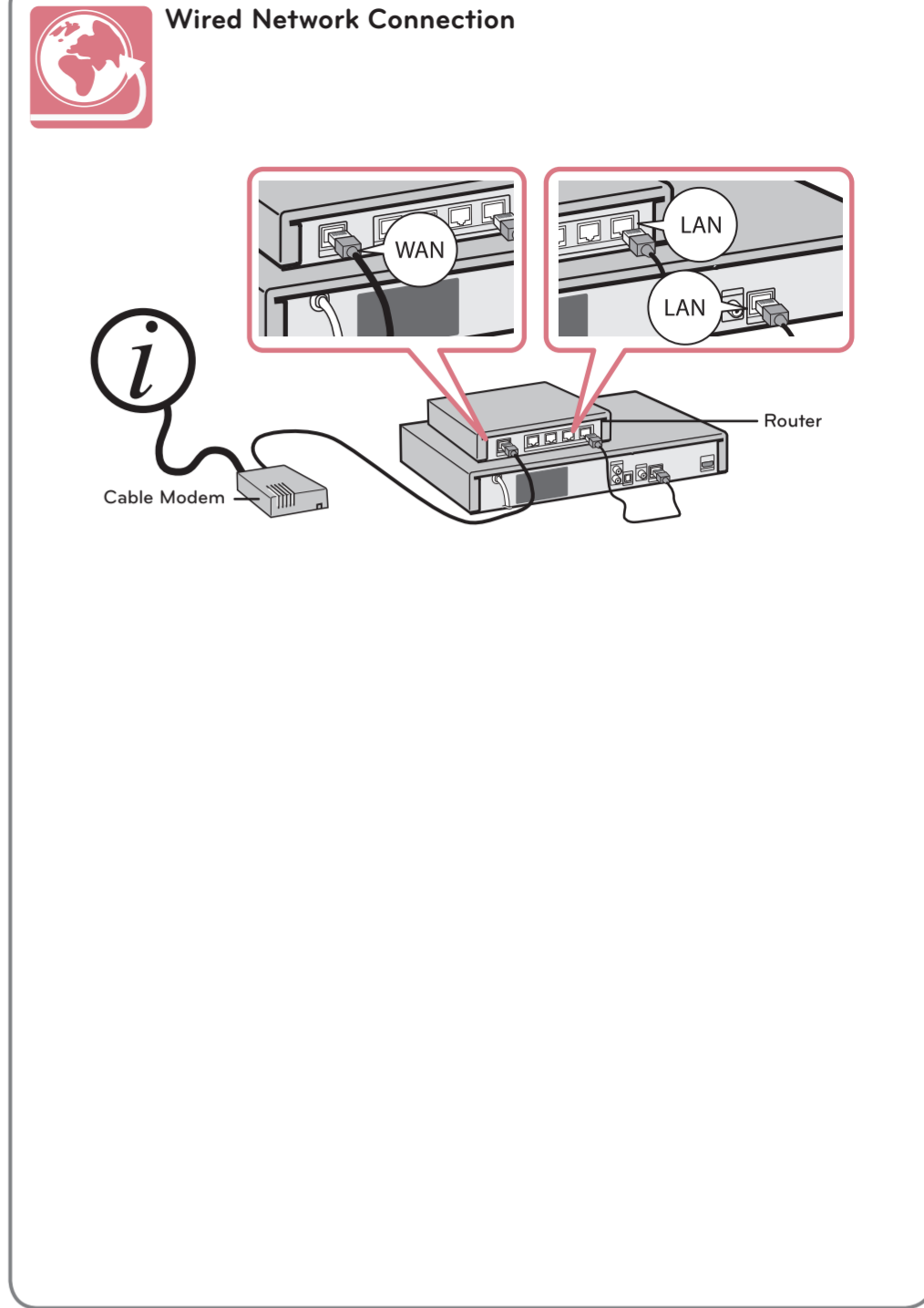
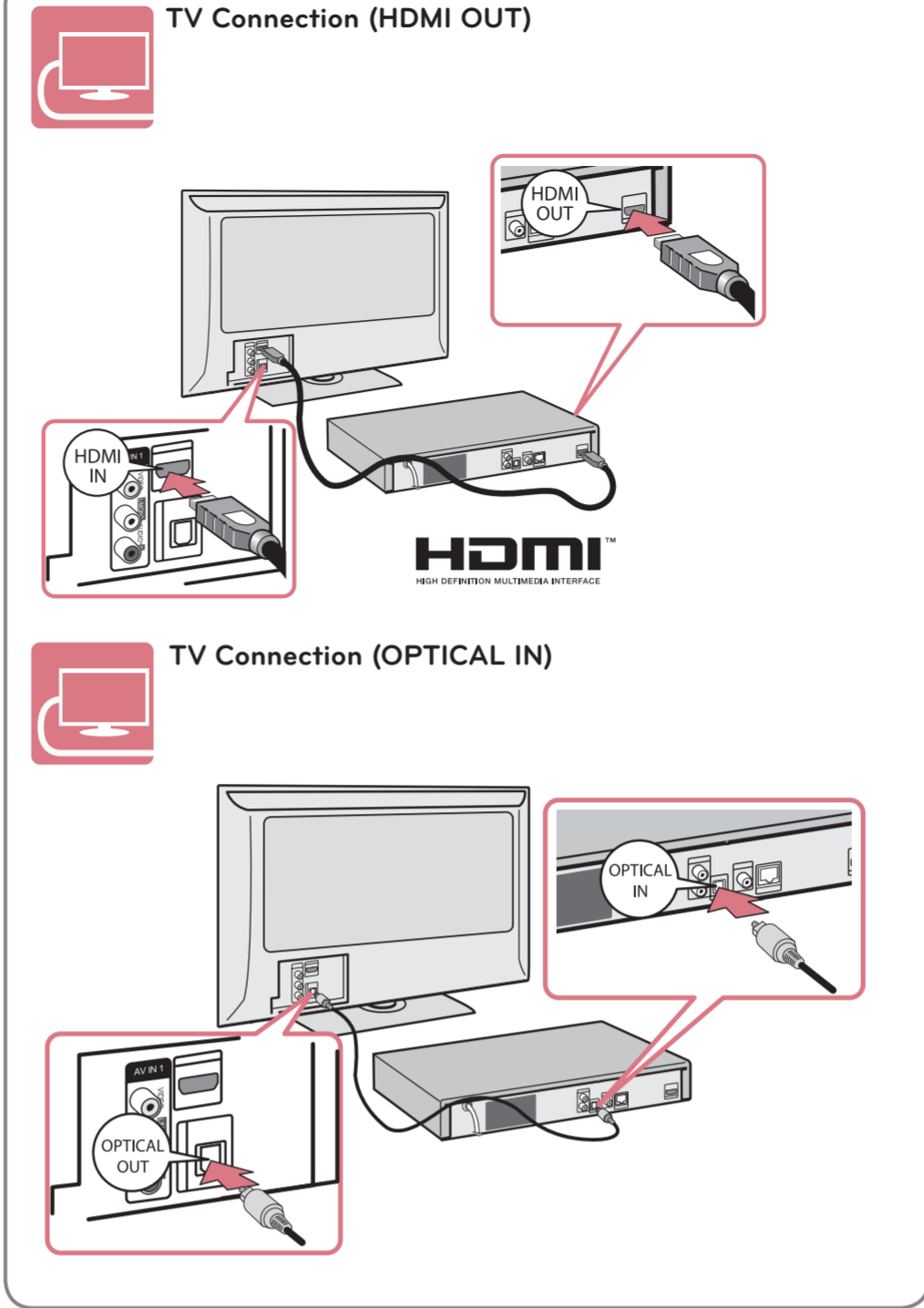
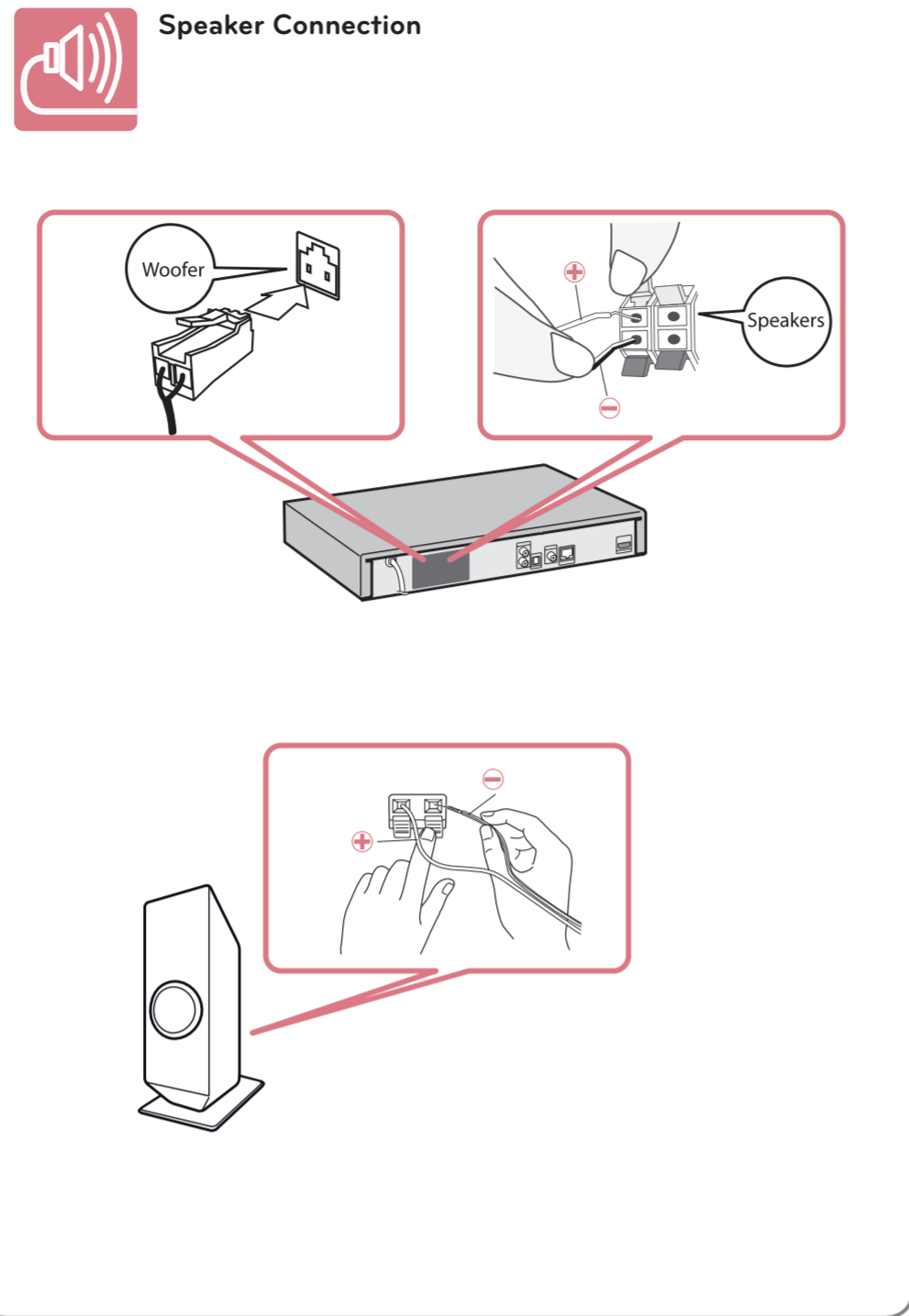
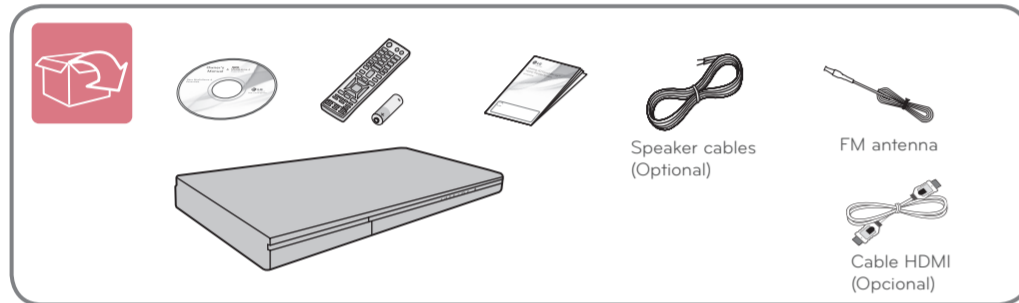


3D Blu-ray™ / DVD Home Theater System

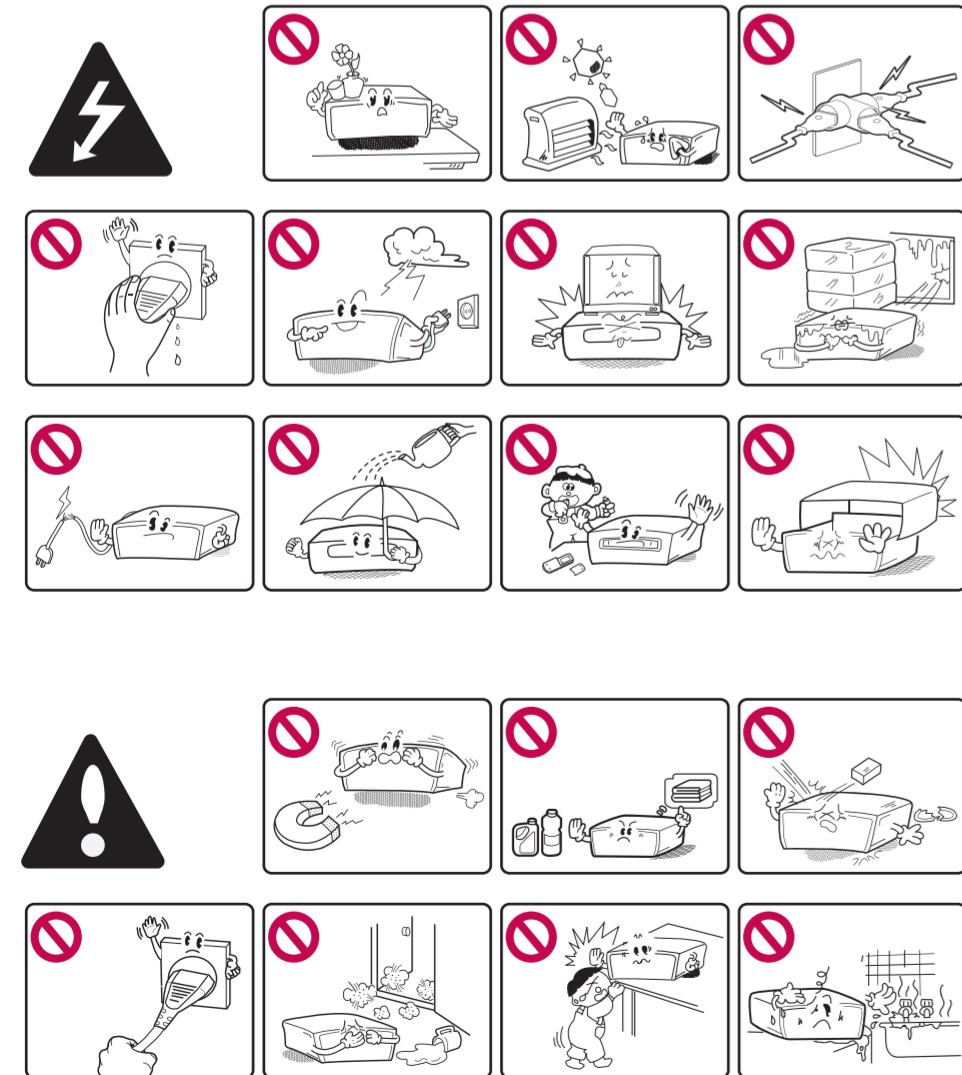
BH6731S-FB

ENGLISH | SIMPLE MANUAL

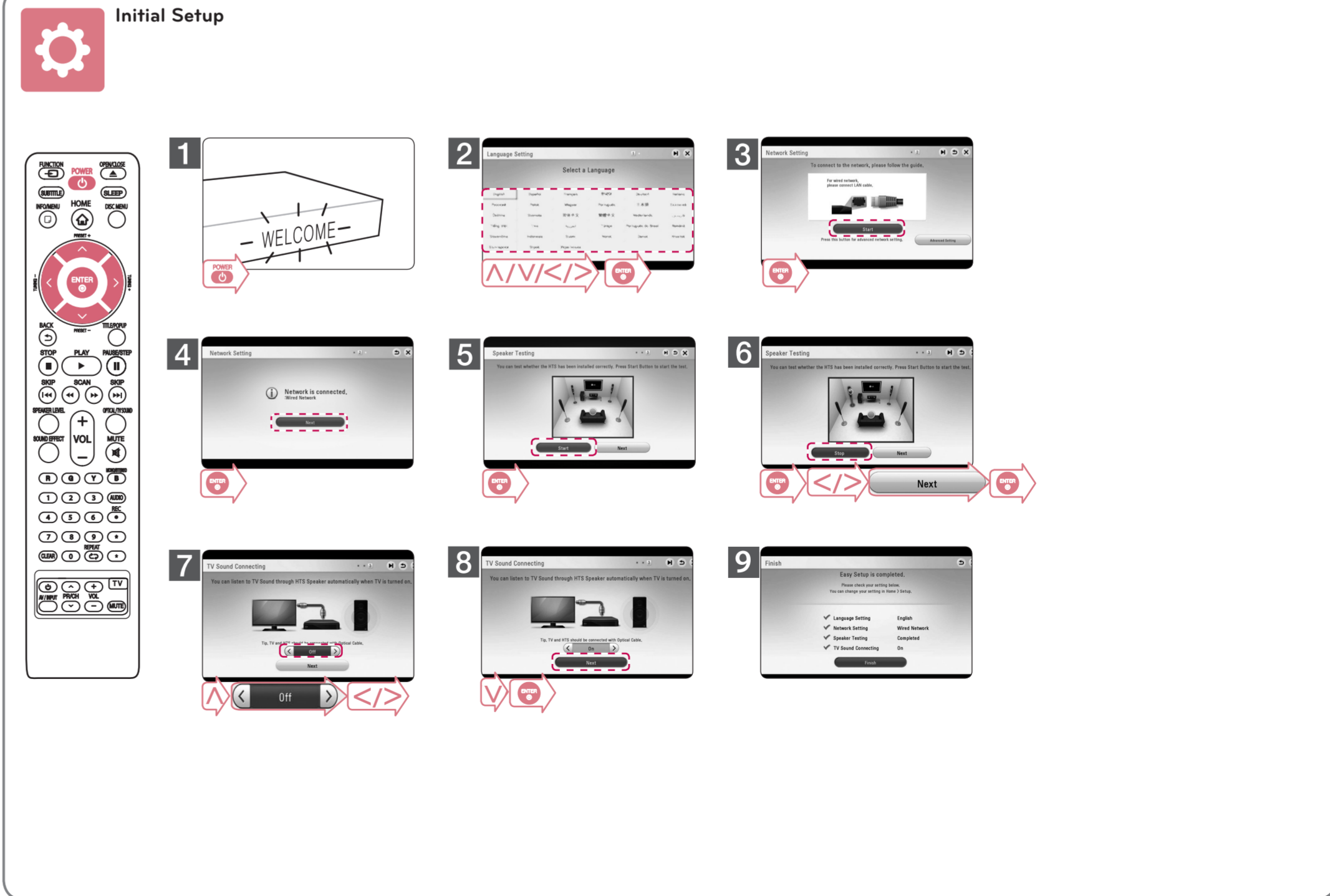
An extended Owner's Manual that contains information on the advanced features is located on the CD-ROM provided in an electronic version. To read these files, you will need to use a Personal Computer (PC) equipped with a CD-ROM drive.



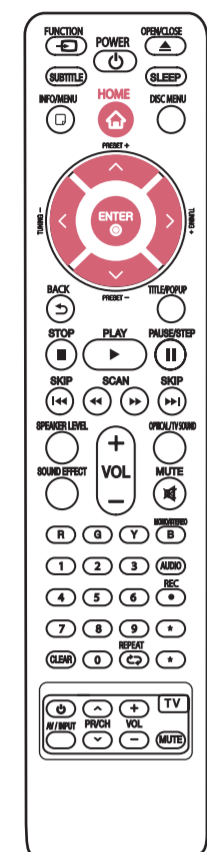
Safety Information



Blank lined area for user notes or registration information.



Using HOME menu



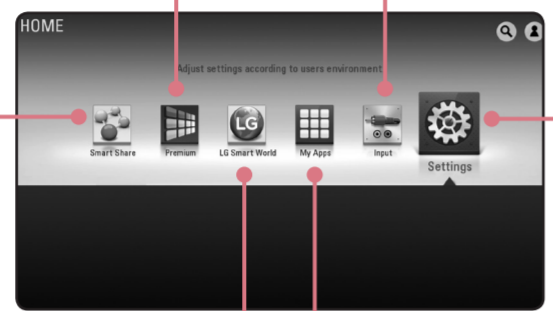
[Premium] - Displays the Premium Home screen.



[Smart Share] - Displays Smart Share menu.



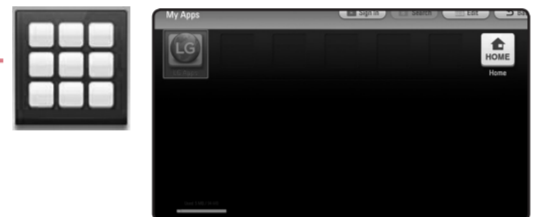
[LG Smart World] - Displays LG Apps titles provided to the unit.



[Input] - Changes input mode.



[Settings] - Adjusts the system settings.



[My Apps] - Displays the [My Apps] screen.

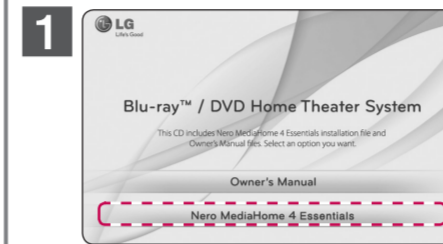
To Use Network Playback



Preparation



Check the network connection and settings.

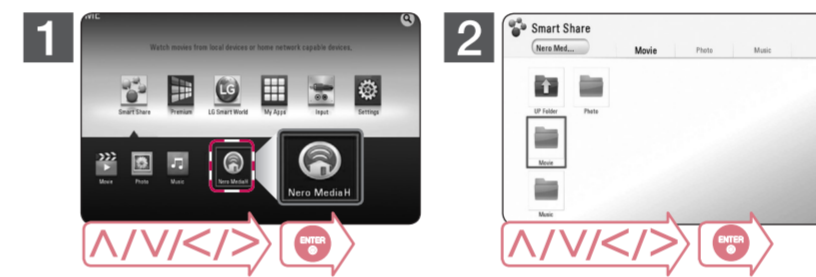


1 Install Nero MediaHome 4 Essentials program on your PC.



2 Run the program, and set the share folder you want.

Smart Share Network Playback



CAUTION

RISK OF ELECTRIC SHOCK
DO NOT OPEN

CAUTION: TO REDUCE THE RISK OF ELECTRIC SHOCK DO NOT REMOVE COVER (OR BACK) NO USER-SERVICEABLE PARTS INSIDE. REFER SERVICING TO QUALIFIED SERVICE PERSONNEL.

This lightning flash with arrowhead symbol within an equilateral triangle is intended to alert the user to the presence of uninsulated dangerous voltage within the product's enclosure that may be of sufficient magnitude to constitute a risk of electric shock to persons.

The exclamation point within an equilateral triangle is intended to alert the user to the presence of important operating and maintenance (servicing) instructions in the literature accompanying the product.

WARNING: TO PREVENT FIRE OR ELECTRIC SHOCK HAZARD, DO NOT EXPOSE THIS PRODUCT TO RAIN OR MOISTURE.

WARNING: Do not install this equipment in a confined space such as a book case or similar unit.

CAUTION: Do not block any ventilation openings. Install in accordance with the manufacturer's instructions. Slots and openings in the cabinet are provided for ventilation and to ensure reliable operation of the product and to protect it from over heating. The openings shall be never be blocked by placing the product on a bed, sofa, rug or other similar surface. This product shall not be placed in a built-in installation such as a bookcase or rack unless proper ventilation is provided or the manufacturer's instruction has been adhered to.

Use of controls, adjustments or the performance of procedures other than those specified herein may result in hazardous radiation exposure.

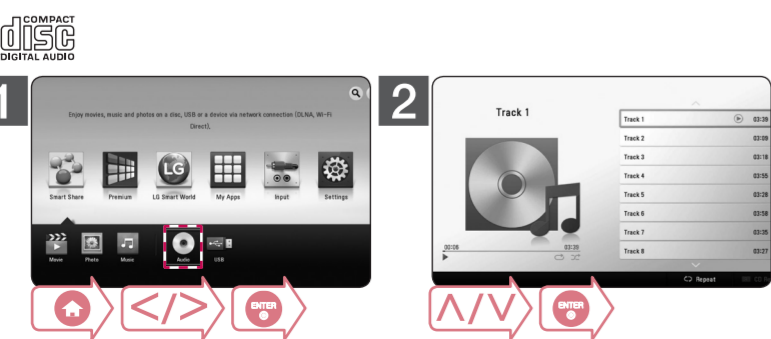
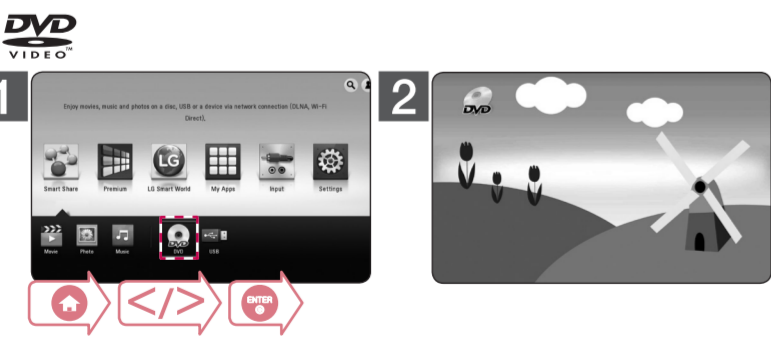
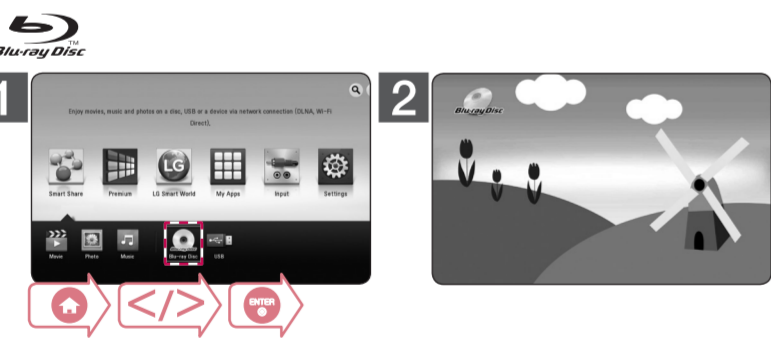
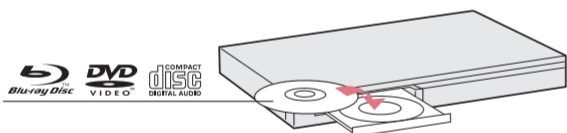
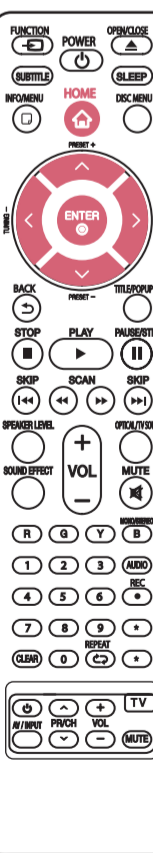
CAUTION concerning the Power Cord
To disconnect power from the mains, pull out the mains cord plug. When installing the product, ensure that the plug is easily accessible.

CAUTION: The apparatus shall not be exposed to water (dripping or splashing) and no objects filled with liquids, such as vases, shall be placed on the apparatus.

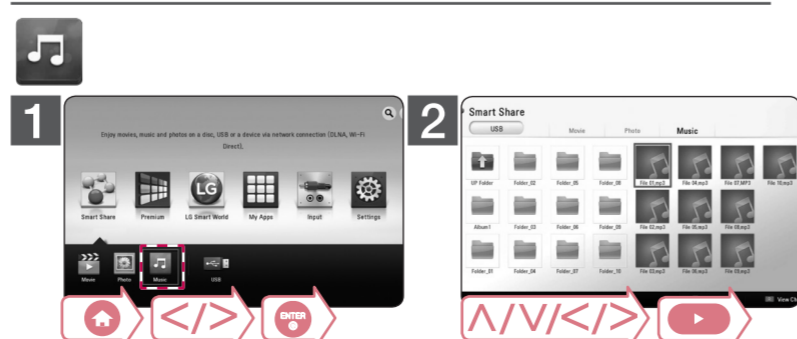
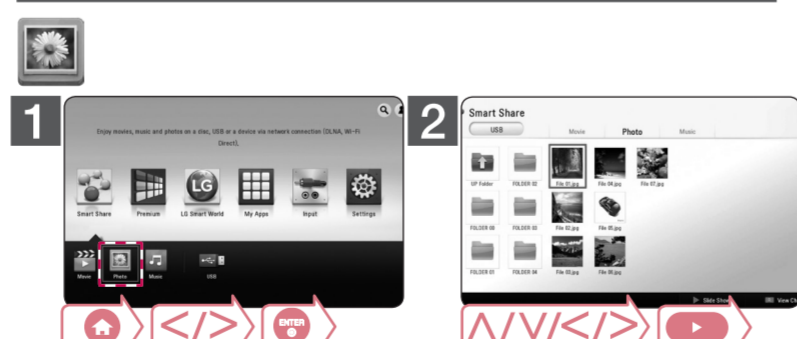
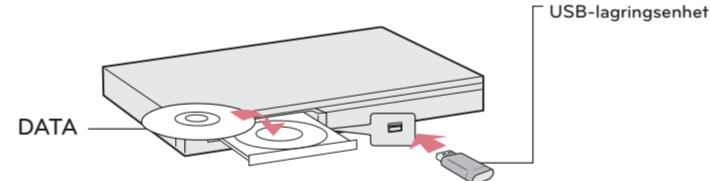
This device is equipped with a portable battery or accumulator.

Safety way to remove the battery or the battery from the equipment: Remove the old battery or battery pack, follow the steps in reverse order than the assembly. To prevent contamination of the environment and bring on possible threat to human and animal health, the old battery or the battery put it in the appropriate container at designated collection points. Do not dispose of batteries or battery together with other waste. It is recommended that you use local, free reimbursement systems batteries and accumulators. The battery shall not be exposed to excessive heat such as sunshine, fire or the like.

Disc Playback



Data Playback



Specification



ENGLISH

Power requirements	Refer to main label
Power consumption	Refer to main label
Dimensions (W x H x D)	Approx. 360 mm X 60.5 mm X 299 mm
Net Weight (Approx.)	2.7 kg
Bus Power Supply (USB)	5 V --- 2.1 A MAX

Design and specifications are subject to change without notice.



Some of the content in this manual may differ from your player depending on the software of the player or your service provider.