



LG

Life's Good

ENGLISH

LG G *Watch*

Quick Start Guide



CE0168

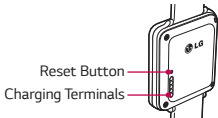
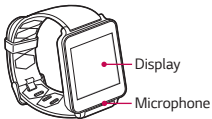
MBM64636302 (1.0)

Table of Contents

Overview	2
Charge the G Watch.....	3
Tips about the Charging Cradle	4
Turn the G Watch On/Off	6
Pair and Connect	7
Safety information	9
Limited Warranty Statement	23

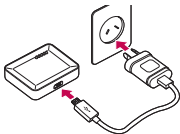
For more detailed information, visit: www.lg.com.

Overview

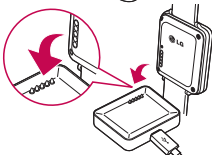


Charge the G Watch

1.



2.



Tips about the Charging Cradle

To fix the charging cradle

1. Remove the film attached to the back side of the charging cradle.
2. Place the charging cradle on a dry, clean, and flat surface. It sticks immediately, without any need to apply pressure.

To remove the charging cradle

Pull up on one corner very gently and slowly. Be patient. If you pull the whole cradle up at once, rather than lifting one corner first, you may damage the cradle or the surface it sits on.



Notes


- Do not remove the charging cradle by twisting it. The charging pad might get damaged.

- To help the cradle's base adhere firmly, clean it occasionally with wipes. Do not use solvents, alcohol, or cleaners.
- When carrying the charging cradle in a bag, your items in the bag might stick to the adhesive part of the cradle and get damaged.

Some of the contents in this guide may differ from your product depending on the software of the product or your service provider. All information in this document is subject to change without notice.

Turn the G Watch On/Off

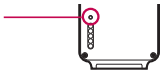
Connect the charging cradle to a power outlet and place the G Watch on it. The device will turn on automatically.

To turn it off, open  **Settings**, then select  **Power off**.

Reset

If the watch isn't working properly, press the reset button with the end of a paperclip to reset it.

Press for 8 seconds to
reset.



Pair and Connect

Your G Watch can be paired with any phone or tablet running Android 4.3 or higher.

1. Download the Android Wear app on Google Play Store and install it on your phone or tablet.
2. Touch the Android Wear app to open it.
3. Make sure Bluetooth on your phone or tablet is turned on.
4. Select the G Watch name, then touch **Pair**.

 **Note**

The first time you pair the G Watch, it might take 5 to 10 minutes for initial pairing process. It varies on the network condition.

To get started, download
the **Android Wear** app
from the Google Play store.

Google



Safety information

Before turning on your product, review the basic safety information provided here.

General safety & handling

While using your product, be aware of the following common-sense guidelines.

Your environment

- **Safe operating temperatures.** Use and store your product in temperatures between 0°C/32°F and 40°C/104°F, if possible. Exposing your product to extremely low or high temperatures may result in damage, malfunction, or even explosion.

- **While driving.** When driving a car, driving is your first responsibility. Using a mobile device or accessory for a call or other application while driving may cause distraction. Keep your eyes on the road.
- **Around explosives.** Do not use in areas where sparks from the product might cause a fire or explosion.
- **On airplanes.** Observe all rules and instructions for use of electronic devices. Most airlines allow electronic use only in flight and not during takeoffs and landings. There are three main types of airport security devices: X-ray machines (used on items placed on conveyor belts), magnetic detectors (used on people walking through security checks), and magnetic wands (hand-held devices used on people or individual items). You can pass your product through airport X-ray machines. But do not send it through airport magnetic detectors or expose it to magnetic wands.

- Always follow any special regulations in a given area. Turn your device off in areas where use is forbidden or when it may cause interference or danger.
- Changing the wrist straps to metal straps might cause Bluetooth connectivity problem.

Safety tips

WARNING: The charging cradle contains strong magnets that may interfere with pacemakers, credit cards, watches, and other magnet-sensitive objects.

To avoid damaging your product and reduce the risk of fire or electric shock, explosion, or other hazards, observe these common-sense precautions:

- Use only with cables, chargers, and other accessories approved by LG.

- Do not drop, strike, or shake your product.
- Do not damage the power cord by bending, twisting, pulling, heating, or placing heavy items on it.
- This product is equipped with a USB cable for connecting to a desktop or notebook computer or to the charger. Be sure your computer is properly grounded before connecting your product to the computer. The power supply cord of a desktop or notebook computer has an equipment-grounding conductor and a grounding plug. The plug must be plugged into an appropriate outlet that is properly installed and grounded in accordance with all local codes and ordinances.
- Do not attempt to repair or modify or remanufacture the product . It is equipped with an internal rechargeable battery, which should be replaced only by LG or an authorized LG repair center.

- Do not open, disassemble, crush, bend or deform, puncture, or shred the product.
- Do not insert foreign objects into the product.
- Do not place the product in a microwave oven.
- Do not expose the product to fire, explosion, or other hazards.
- Clean with a soft, damp cloth. Don't use harsh chemicals (such as alcohol, benzene, or thinners) or detergents to clean your product.
- Do not immerse or expose the product to water or other liquids.
- Dispose of your product and battery separately from household waste and in accordance with local regulations.
- Like many electronic devices, your product generates heat during normal operation. Extremely prolonged, direct skin contact in the absence of adequate ventilation may result in discomfort or minor burns. Therefore, use care when handling your product

during or immediately after operation.

- If you have a problem with using the product, please stop using it and consult with the authorised LG Electronics customer service center.

Battery warnings

- Do not attempt to remove or replace the battery yourself. Only a service provider authorized by LG should replace the battery.
- If you need to replace the battery, take it to the nearest authorised LG Electronics service point or dealer for assistance.
- Use of an unqualified battery may present a risk of fire, explosion, leakage, or other hazard.
- Use the correct adapter when using the battery charger in a country or region where the adapter that comes with your product doesn't fit the power outlets.

- The charger and adapter are intended for indoor use only.
- Make sure that no sharp-edged items, such as an animal's teeth or nails, come into contact with the battery.
- Do not expose the battery charger or adapter to direct sunlight or use it in places with high humidity, such as a bathroom.
- To avoid electric shock or fire, unplug the power cord and charger during lightning storms.
- Do not open, disassemble, crush, bend or deform, puncture, or shred the battery.
- Do not modify or remanufacture, attempt to insert foreign objects into the battery, immerse or expose to water or other liquids, or expose to fire, explosion, or other hazard. Such conditions may present the risk of fire or explosion.
- Avoid dropping the product, especially on a hard surface, or exposing the product or battery to a liquid. If the product is

exposed to a liquid or comes into contact with a sharp object, take it to a service center for inspection.

- At least one battery authentication method has been implemented: hardware, software, mechanical, hologram, etc.
- Improper battery use may result in a fire, explosion, or other hazard.
- Do not allow children to charge the battery or use the adapter without adult supervision.
- Always unplug the charger from the wall socket after the product is fully charged to save unnecessary power consumption of the charger.
- Do not expose to high temperature. (140°F/60°C)
- Do not allow metal objects to contact or short circuit the battery terminals.
- Do not incinerate or expose to fire.

Notes on water resistant properties

This product is water and dust resistant in compliance with the Ingress Protection rating IP67*.

* The IP67 rating means that the product will maintain its operability even if it is gently submerged in a tank of still tap water at room temperature for about 30minutes, up to a depth of 1 meter.

Avoid exposing the product to environments with excessive dusts or moisture. Do not use the product in the following environments.



Do not immerse the product in any liquid chemicals (soap, etc.) other than water.



Do not immerse the product in salt water, such as sea water.



Do not immerse the product in hot spring.



Do not swim wearing this product.



Do not use the product underwater.



Do not place the product directly on sand (such as at a beach) or mud.

- Once the product gets wet, water may remain in gaps of the main unit. Shake the product well to drain water.
- Even after water is drained, the inner parts might be still wet. Although you can use the product, do not place it near things that must not get wet. Take care not to wet your clothes, bag or contents of the bag.

- Drain water if the voice activation does not work properly due to water remaining in the microphone.
- Do not use the product in places where it may be sprayed with high-pressure water (e.g. near a faucet or shower head) or submerge it in water for extended periods of time, as the product is not designed to withstand high water pressure.
- This product is not resistant to shock. Do not drop the product or subject it to shock. Doing so might damage or deform the main unit causing water leak.

Pacemakers and other medical devices

Persons with pacemakers should:

- **ALWAYS** keep the product more than six (6) inches from their pacemaker when the product is turned ON.
- Not carry the product in a breast pocket.

- Use the wrist opposite the pacemaker to minimize the potential for RF interference.
- Turn the product OFF immediately if there is any indication that interference is taking place.

If you use any other personal medical device, consult your physician or the manufacturer of your device to determine if it is adequately shielded from external RF energy.

Driver Safety Tips

Your mobile telephone gives you the powerful ability to communicate almost anywhere, anytime, but an important responsibility accompanies the benefits of mobile phones, one that every user must uphold. When driving a car, driving is your first responsibility. When using your mobile phone behind the wheel of a car, practice good common sense and remember the following tips:

- Use a hands free device to add an additional layer of convenience and safety to your wireless phone with one of the many hands free accessories available today.
- Let the person you are speaking with know you are driving; if necessary, suspend the call in heavy traffic or hazardous weather conditions. Rain, sleet, snow, ice and even heavy traffic can be hazardous.
- Do not take notes or look up phone numbers while driving. Typing up a "to do" list or flipping through your address book takes attention away from your primary responsibility of driving safely.
- Place calls when you are not moving or before pulling into traffic. Try to plan calls when you will not be driving.
- Do not engage in stressful or emotional conversations that may be distracting. Make people you are talking with aware you are driving and suspend conversations that have the potential to divert your attention from the road.

- Use your mobile phone to help others in emergencies. If you see an auto accident, crime in progress or other serious emergency where lives are in danger, call the emergency number, as you would want others to do for you.
- If you see a broken down vehicle posing no serious hazard, a broken traffic signal, a minor traffic accident where no one appears injured, or a vehicle you know to be stolen, call roadside assistance, local traffic authority or police station.

Regulatory information

Settings > About > Regulatory information.

Limited Warranty Statement

For warranty service, please keep this warranty certificate and your receipt to validate proof of purchase.

LG G WATCH MANUFACTURER'S WARRANTY

Subject to the terms below and if you purchased your product from Google Play Online Store, LG Electronics Australia Pty Ltd (LG) will for one (1) year from date of purchase for your LG G Watch (including battery and accessories such as charger), authorise a free of charge repair, if in LG's opinion, the product needs repair because of a manufacturing or materials defect, appearing and notified to LG in accordance with this warranty, within such period.

This LG manufacturer's warranty only applies to service within Australia (for mobile phones purchased within Australia only) and New Zealand (for mobile phones purchased within New Zealand only). This warranty is not transferable and applies to the original purchaser only. No LG employee, product retailer or Authorised Service Centre has authority to vary the terms of this warranty. Goods presented for repair may be replaced by refurbished goods of the same type rather than being repaired. Refurbished parts may be used to repair the goods.

This LG manufacturer's warranty is limited to the LG product and excludes third party components used in conjunction with the LG product.

Before you deliver your product for warranty service it is your responsibility to keep a separate backup copy of the contents, because the data may be lost during repair of the product. You are responsible for reinstalling all content including software programs,

data and passwords. Recovery and reinstallation of software programs and user data are not covered under the terms of this manufacturer's warranty.

PLACE OF SERVICE

Repairs under the terms of this warranty will be conducted at an LG Authorised Service Centre. Transportation costs to and from the Service Centre are not covered by this Warranty. Service Centers are open during normal business hours, Monday to Friday. LG's Authorised Service Centre may charge an additional fee for service outside these hours.

SERVICES FOR WHICH YOU WILL BE ASKED TO PAY

This LG manufacturer's warranty does not cover:

- Products where the serial number has been removed or made illegible;

- Maintenance, repair or replacement of parts or consumables due to normal wear and tear.
- Repair of cosmetic or physical damage or damage caused by excessive force;
- Water damage where damage was caused by submersion of the product in water for 30 minutes or more or where the water depth is greater than or equal to 1 metre.
- Defects or damage resulting from breakage or tampering with the LCD screen
- Accident, neglect, misuse or Act of God.
- Alterations or repairs made by someone other than an LG Authorised Service Centre.
- Unauthorized modifications or other acts, including spills of food or liquid, or external interference which is not a manufacturing or material fault.

- Use of the product beyond its intended purpose or in manner that is contrary to manufacturer's instructions;
- Damage or defects caused by use of or in connection with accessories, software and/or services not manufactured, supplied or authorized by LG.
- If the battery short circuits or the seals of the battery are broken or show evidence of tampering or the battery was used in equipment in a manner other than that which has been specified;

OTHER RIGHTS

The benefits given by this LG manufacturer's warranty are additional to other rights and remedies that you may have under law.

Australian customers: Our goods come with guarantees that cannot be excluded under the Australian Consumer Law. You are entitled to a replacement or refund for a major failure and for compensation for any other reasonably foreseeable loss or damage. You are also

entitled to have the goods repaired or replaced if the goods fail to be of acceptable quality and the failure does not amount to a major failure.

HOW TO CLAIM

To make a claim against this manufacturer's warranty, you must contact LG within one (1) year of purchase on:

By telephone

Australia

1300 LG CARE (1300 542
273) 7 Days, 7am-7pm

New Zealand

0800 LG CARE (0800 542
273) 7 Days, 9am-9pm

By post (Australia Only):

Warranty Claims

LG Electronics Australia

PO Box 212

Horsley Park NSW 2175

When contacting LG for assistance please provide your name and address, model number, serial number, date of purchase, and a complete description of the problem. This information will help LG provide fast assistance.

LG Electronics Australia Pty Ltd (ABN 98 064 531 264)

2 Wonderland Drive, Eastern Creek NSW 2766

Australia



.....

.....

.....

.....

.....

.....

.....

.....

.....

.....

.....

.....

.....

.....

.....

.....

.....

.....

.....

.....

.....

.....

.....

.....

.....

.....

.....

.....

.....

.....

.....

.....

.....

.....

.....

.....

.....

.....

.....

.....

.....

.....

.....

.....

.....

.....

.....

.....

.....

.....

.....

.....

.....

.....

.....

.....

.....

.....

.....

.....

.....

.....

.....