

ENGLISH



LG

Life's Good

LG G *Watch*

Quick Start Guide

LG-W100

General Inquiries

<LG Customer Information Centre>

UK: 0344 847 5454 or +44 344 847 5454

IE: 01 686 9454 or +353 1 686 9454

* Make sure the number is correct before making a call.



CE0168

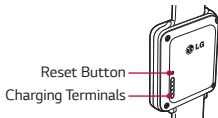
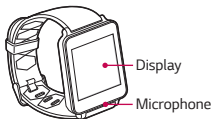
MBM64636310 (1.1)

Table of Contents

Overview	2
Charge the G Watch.....	3
Tips about the Charging Cradle	4
Turn the G Watch On/Off	6
Pair and Connect	7
Safety information	9
LIMITED WARRANTY STATEMENT	27

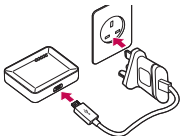
For more detailed information, visit: www.lg.com.

Overview

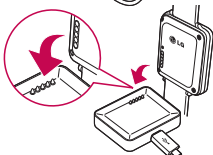


Charge the G Watch

1.



2.



Tips about the Charging Cradle

To fix the charging cradle

1. Remove the film attached to the back side of the charging cradle.
2. Place the charging cradle on a dry, clean, and flat surface. It sticks immediately, without any need to apply pressure.

To remove the charging cradle

Pull up on one corner very gently and slowly. Be patient. If you pull the whole cradle up at once, rather than lifting one corner first, you may damage the cradle or the surface it sits on.



Notes


- Do not remove the charging cradle by twisting it. The charging pad might get damaged.

- To help the cradle's base adhere firmly, clean it occasionally with wipes. Do not use solvents, alcohol, or cleaners.
- When carrying the charging cradle in a bag, your items in the bag might stick to the adhesive part of the cradle and get damaged.

Some of the contents in this guide may differ from your product depending on the software of the product or your service provider. All information in this document is subject to change without notice.

Turn the G Watch On/Off

Connect the charging cradle to a power outlet and place the G Watch on it. The device will turn on automatically.

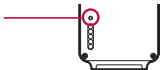
To turn it off, open  **Settings**, then select  **Power off**.

Reset

If the watch isn't working properly, press the reset button with the end of a paperclip to reset it.

- Use a blunt point and gently push the reset button being careful not to use excessive force.

Press for 8 seconds to
reset.



Pair and Connect

Your G Watch can be paired with any phone or tablet running Android 4.3 or higher.

1. Download the Android Wear app on Google Play Store and install it on your phone or tablet.
2. Touch the Android Wear app to open it.
3. Make sure Bluetooth on your phone or tablet is turned on.
4. Select the G Watch name, then touch **Pair**.



Note

The first time you pair the G Watch, it might take 5 to 10 minutes for initial pairing process. It varies on the network condition.

To get started, download
the **Android Wear** app
from the Google Play store.

Google



Safety information

Before turning on your product, review the basic safety information provided here.

General safety & handling

While using your product, be aware of the following common-sense guidelines.

Your environment

- **Safe operating temperatures.** Use and store your product in temperatures between 0°C/32°F and 40°C/104°F, if possible. Exposing your product to extremely low or high temperatures may result in damage, malfunction, or even explosion.

- **While driving.** When driving a car, driving is your first responsibility. Using a mobile device or accessory for a call or other application while driving may cause distraction. Keep your eyes on the road.
- **Around explosives.** Do not use in areas where sparks from the product might cause a fire or explosion.
- **On airplanes.** Observe all rules and instructions for use of electronic devices. Most airlines allow electronic use only in flight and not during takeoffs and landings. There are three main types of airport security devices: X-ray machines (used on items placed on conveyor belts), magnetic detectors (used on people walking through security checks), and magnetic wands (hand-held devices used on people or individual items). You can pass your product through airport X-ray machines. But do not send it through airport magnetic detectors or expose it to magnetic wands.

- Always follow any special regulations in a given area. Turn your device off in areas where use is forbidden or when it may cause interference or danger.
- Changing the wrist straps to metal straps might cause Bluetooth connectivity problem.

Safety tips

WARNING: The charging cradle contains strong magnets that may interfere with pacemakers, credit cards, watches, and other magnet-sensitive objects.

To avoid damaging your product and reduce the risk of fire or electric shock, explosion, or other hazards, observe these common-sense precautions:

- Use only with cables, chargers, and other accessories approved by LG.

- Do not drop, strike, or shake your product.
- Do not damage the power cord by bending, twisting, pulling, heating, or placing heavy items on it.
- This product is equipped with a USB cable for connecting to a desktop or notebook computer or to the charger. Be sure your computer is properly grounded before connecting your product to the computer. The power supply cord of a desktop or notebook computer has an equipment-grounding conductor and a grounding plug. The plug must be plugged into an appropriate outlet that is properly installed and grounded in accordance with all local codes and ordinances.
- Do not attempt to repair or modify or remanufacture the product . It is equipped with an internal rechargeable battery, which should be replaced only by LG or an authorized LG repair center.

- Do not open, disassemble, crush, bend or deform, puncture, or shred the product.
- Do not insert foreign objects into the product.
- Do not place the product in a microwave oven.
- Do not expose the product to fire, explosion, or other hazards.
- Clean with a soft, damp cloth. Don't use harsh chemicals (such as alcohol, benzene, or thinners) or detergents to clean your product.
- Do not immerse or expose the product to water or other liquids.
- Dispose of your product and battery separately from household waste and in accordance with local regulations.
- Like many electronic devices, your product generates heat during normal operation. Extremely prolonged, direct skin contact in the absence of adequate ventilation may result in discomfort or minor burns. Therefore, use care when handling your product

during or immediately after operation.

- If you have a problem with using the product, please stop using it and consult with the authorised LG Electronics customer service center.

Battery warnings

- Do not attempt to remove or replace the battery yourself. Only a service provider authorized by LG should replace the battery, which must meet the standard IEEE 1725.
- If you need to replace the battery, take it to the nearest authorised LG Electronics service point or dealer for assistance.
- Use only with a charging system that has been qualified per CTIA Certification Requirements for Battery System Compliance to IEEE 1725. Use of an unqualified battery may present a risk of fire, explosion, leakage, or other hazard.

- Use the correct adapter when using the battery charger in a country or region where the adapter that comes with your product doesn't fit the power outlets.
- The charger and adapter are intended for indoor use only.
- Make sure that no sharp-edged items, such as an animal's teeth or nails, come into contact with the battery.
- Do not expose the battery charger or adapter to direct sunlight or use it in places with high humidity, such as a bathroom.
- To avoid electric shock or fire, unplug the power cord and charger during lightning storms.
- Do not open, disassemble, crush, bend or deform, puncture, or shred the battery.
- Do not modify or remanufacture, attempt to insert foreign objects into the battery, immerse or expose to water or other liquids, or expose to fire, explosion, or other hazard. Such

conditions may present the risk of fire or explosion.

- Avoid dropping the product, especially on a hard surface, or exposing the product or battery to a liquid. If the product is exposed to a liquid or comes into contact with a sharp object, take it to a service center for inspection.
- At least one battery authentication method has been implemented: hardware, software, mechanical, hologram, etc.
- Improper battery use may result in a fire, explosion, or other hazard.
- Do not allow children to charge the battery or use the adapter without adult supervision.
- Always unplug the charger from the wall socket after the product is fully charged to save unnecessary power consumption of the charger.
- Do not expose to high temperature. (140°F/60°C)

- Do not allow metal objects to contact or short circuit the battery terminals.
- Do not incinerate or expose to fire.

Notes on water resistant properties

This product is water and dust resistant in compliance with the Ingress Protection rating IP67*.

* The IP67 rating means that the product will maintain its operability even if it is gently submerged in a tank of still tap water at room temperature for about 30minutes, up to a depth of 1 meter.

Avoid exposing the product to environments with excessive dusts or moisture. Do not use the product in the following environments.



Do not immerse the product in any liquid chemicals (soap, etc.) other than water.



Do not immerse the product in salt water, such as sea water.



Do not immerse the product in hot spring.



Do not swim wearing this product.



Do not use the product underwater.



Do not place the product directly on sand (such as at a beach) or mud.

- Once the product gets wet, water may remain in gaps of the main unit. Shake the product well to drain water.
- Even after water is drained, the inner parts might be still wet. Although you can use the product, do not place it near things

that must not get wet. Take care not to wet your clothes, bag or contents of the bag.

- Drain water if the voice activation does not work properly due to water remaining in the microphone.
- Do not use the product in places where it may be sprayed with high-pressure water (e.g. near a faucet or shower head) or submerge it in water for extended periods of time, as the product is not designed to withstand high water pressure.
- This product is not resistant to shock. Do not drop the product or subject it to shock. Doing so might damage or deform the main unit causing water leak.

Pacemakers and other medical devices

Persons with pacemakers should:

- ALWAYS keep the product more than six (6) inches from their pacemaker when the product is turned ON.
- Not carry the product in a breast pocket.
- Use the wrist opposite the pacemaker to minimize the potential for RF interference.
- Turn the product OFF immediately if there is any indication that interference is taking place.

If you use any other personal medical device, consult your physician or the manufacturer of your device to determine if it is adequately shielded from external RF energy.

Exposure to radio frequency (RF) energy

In August 1996, the U.S. Federal Communications Commission (FCC), with its action in Report and Order FCC 96-326, adopted an updated safety standard for human exposure to Radio Frequency (RF) electromagnetic energy emitted by FCC-regulated transmitters. The design of this product complies with the FCC guidelines and these international standards. This model can be found under the Display Grant section of <http://transition.fcc.gov/oet/ea/fccid/> after searching on FCC ID ZNFW100.

US/Canada declarations of conformity

This equipment has been tested and found to comply with the limits for a class B digital device, pursuant to Part 15 of the FCC rules. These limits are designed to provide reasonable protection against harmful interference in a residential installation. This equipment

generates, uses, and can radiate radio frequency energy and, if not installed and used in accordance with the instructions, may cause harmful interference with radio communications. However, there is no guarantee that interference will not occur in a particular installation. If this equipment does cause harmful interference or television reception, which can be determined by turning the equipment off and on, you can try to correct the interference by one or more of the following measures:

- Reorient or relocate the receiving antenna.
- Increase the separation between the equipment and receiver.
- Connect the equipment into an outlet on a circuit different from that to which the receiver is connected.
- Consult the dealer or an experienced radio/TV technician for help.

Part 15.21 statement: Change or Modifications that are not expressly approved by the manufacturer could void the user's

authority to operate the equipment.

Part 15.19 statement (U.S.) and RSS General Requirement (CANADA): This device complies with part 15 of FCC rules and Industry Canada license-exempt RSS standards. Operation is subject to the following two conditions:

- (1) This device may not cause harmful interference.
- (2) This device must accept any interference received, including interference that may cause undesired operation.

EU DECLARATION OF CONFORMITY

Hereby, LG Electronics declares that this LG-W100 product is in compliance with the essential requirements and other relevant provisions of Directive 1999/5/EC. A copy of the Declaration of Conformity can be found at <http://www.lg.com/global/declaration>.



Disposal of your old appliance

1. All electrical and electronic products should be disposed of separately from the municipal waste stream via designated collection facilities appointed by the government or the local authorities.
2. The correct disposal of your old appliance will help prevent potential negative consequences for the environment and human health.
3. For more detailed information about disposal of your old appliance, please contact your city office, waste disposal service or the shop where you purchased the product.



Disposal of waste batteries/accumulators

1. This symbol may be combined with chemical symbols for mercury (Hg), cadmium (Cd) or lead (Pb) if the battery contains more than 0.0005% of mercury, 0.002% of cadmium or 0.004% of lead.
2. All batteries/accumulators should be disposed separately from the municipal waste stream via designated collection facilities appointed by the government or the local authorities.
3. The correct disposal of your old batteries/accumulators will help to prevent potential negative consequences for the environment, animal and human health.
4. For more detailed information about disposal of your old batteries/accumulators, please contact your city office, waste disposal service or the shop where you purchased the product.

Regulatory information

Settings > About > Regulatory information.

Contact office for compliance of this product:

LG Electronics Inc. EU Representative, Krijgsman 1,
1186 DM Amstelveen, The Netherlands



LIMITED WARRANTY STATEMENT

1. WHAT THIS WARRANTY COVERS :

LG offers you a limited warranty that the enclosed G watch and its enclosed accessories will be free from defects in material and workmanship according to the following terms and conditions:

- (1) The limited warranty for the product extends the warranty period beginning on the date of purchase of the product.
- (2) The limited warranty applies for 2 years from the original date of purchase and extends only to the original purchaser of the product and is not assignable or transferable to any subsequent purchaser/end user. It shall neither exclude nor limit any mandatory statutory rights of the customer or any of the customer rights against the seller/dealer of the product.
- (3) This warranty is good only to the original purchaser during the warranty period, but limited to certain country if specified.
- (4) The external housing and cosmetics parts shall be free of defects at the time of shipment and, therefore, shall not be covered under these limited warranty terms.
- (5) Upon request from LG, or their designated service agent the consumer must provide information to reasonably prove the date of purchase.
- (6) Unless other service arrangements have been specified the customer shall bear the cost of shipping a defective product back to the Customer Service Department of LG. LG shall bear the cost of shipping the product back to the consumer after the completion of service under this limited warranty.

- (7) During the warranty period LG or its authorised service agent will repair or replace at LG's sole discretion a defective product. A repaired or replaced product will not be given a prolonged or renewed warranty period.

2. WHAT THIS WARRANTY DOES NOT COVER :

- (1) Defects OR Damages resulting from use of the product in other than its normal and customary manner.
- (2) Defects or damages from abnormal use, abnormal conditions, improper storage, exposure to moisture or dampness, unauthorised modifications, unauthorised connections, unauthorised repair, neglect, abuse, accident, alteration, improper installation, or other acts which are not the fault of LG, including damage caused by shipping, blown fuses, spills of food or liquid.
- (3) Breakage or damage to antennas unless caused directly by defects in material or workmanship.
- (4) A warranty repair if the Customer Service Department at LG or other agreed service agent was not notified by the consumer of the alleged defect or malfunction of the product during the applicable limited warranty period.
- (5) Products which have had the serial number or IMEI number removed or made illegible.
- (6) This limited warranty is in lieu of all other warranties, express or implied either in fact or by operations of law, statutory or otherwise, including, but not limited to any implied warranty of marketability or fitness for a particular use.
- (7) Damage resulting from use of non-LG approved accessories.
- (8) All plastic surfaces and all other externally exposed parts that are scratched or damaged due to normal customer use.
- (9) Products operated outside published maximum ratings.
- (10) Products used or obtained in a rental program.
- (11) Consumables (such as fuses).
- (12) Suspected defects caused by a failure of the cellular network.

3. CONDITIONS :

No other express warranty is applicable to this product.

The DURATION OF ANY IMPLIED WARRANTIES, INCLUDING THE IMPLIED WARRANTY OF MARKETABILITY, IS LIMITED TO THE DURATION OF THE EXPRESS WARRANTY HEREIN. LG ELECTRONICS INC. SHALL NOT BE LIABLE FOR THE LOSS OF THE USE OF THE PRODUCT, INCONVENIENCE, LOSS OR ANY OTHER DAMAGES, DIRECT OR CONSEQUENTIAL, ARISING OUT OF THE USE OF, OR INABILITY TO USE, THIS PRODUCT OR FOR ANY EXPRESS OR IMPLIED WARRANTY, INCLUDING THE IMPLIED MARKETABILITY APPLICABLE TO THIS PRODUCT.

Some do not allow the exclusive of limitation of incidental or consequential damages or limitations on how long an implied warranty lasts; so these limitations or exclusions may not apply to you. This warranty gives you specific legal rights and you may also have other rights which vary from country to country.



LG Electronics

.....

.....

.....

.....

.....

.....

.....

.....

.....

.....

.....

.....

.....

.....

.....

.....

.....

.....

.....

.....

.....

.....

.....

.....

.....

.....

.....

.....

.....

.....

.....

.....

.....

.....

.....

.....

.....

.....

.....

.....

.....

.....

.....

.....

.....

.....

.....

.....

.....

.....

.....

.....

.....

.....

.....

.....

.....

.....

.....

.....

.....

.....

.....