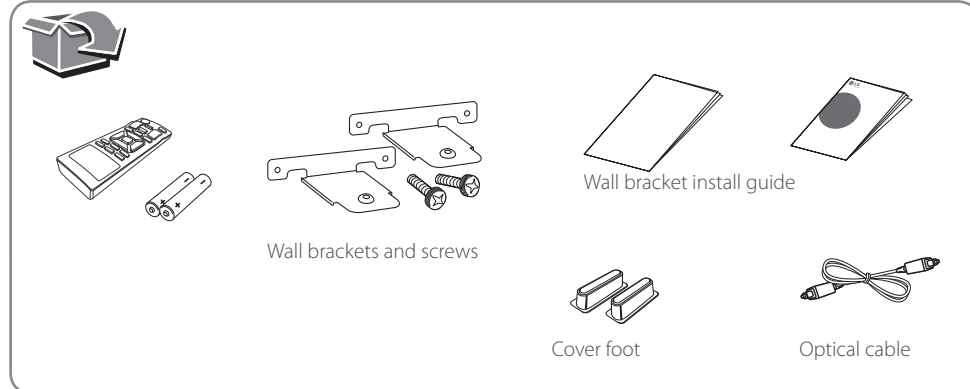


Sound Bar

Model : LAS350B

ENGLISH | SIMPLE MANUAL (1 of 2)

To view the instructions of advanced features, visit <http://www.lg.com> and then download Owner's Manual. Some of the content in this manual may differ from your unit.

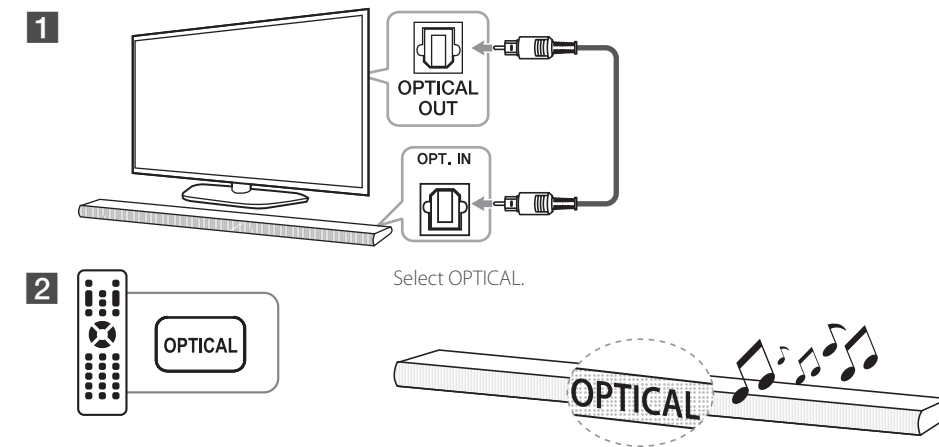


MF189542637

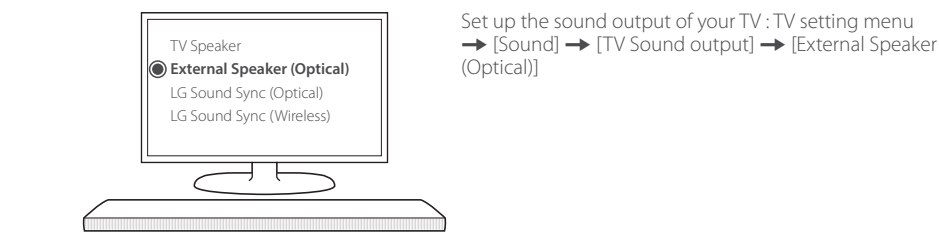
www.lg.com



Optical operation



Some TV need to change setting of sound output. Refer to the description below.



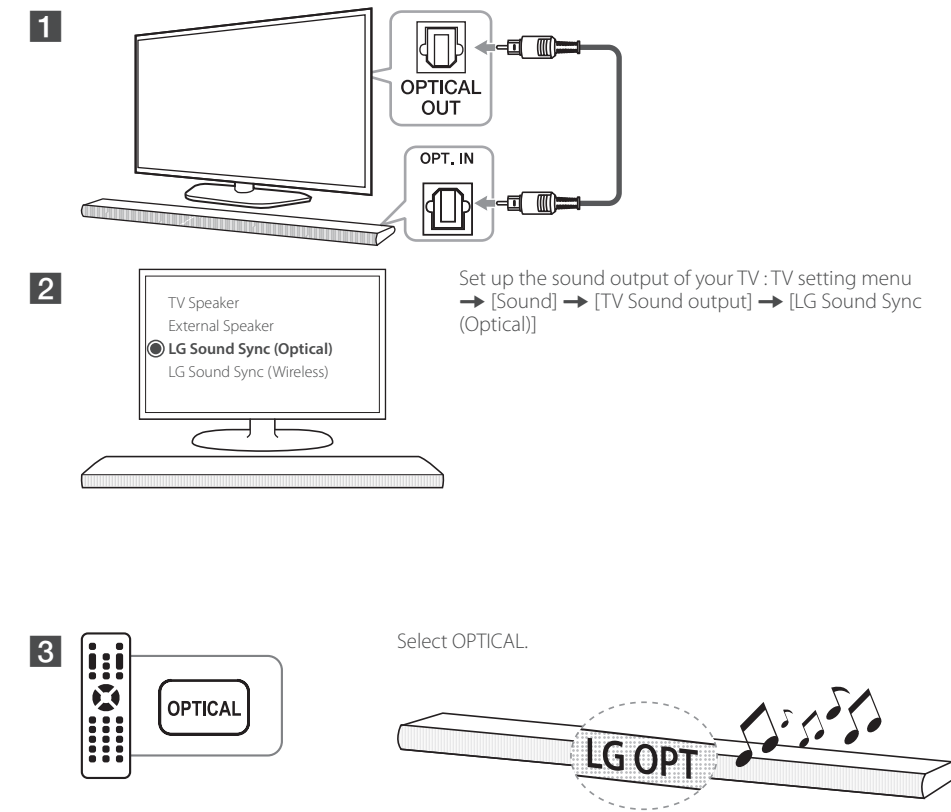
Details of TV setting menu vary depending on the manufacturers or models of your TV.



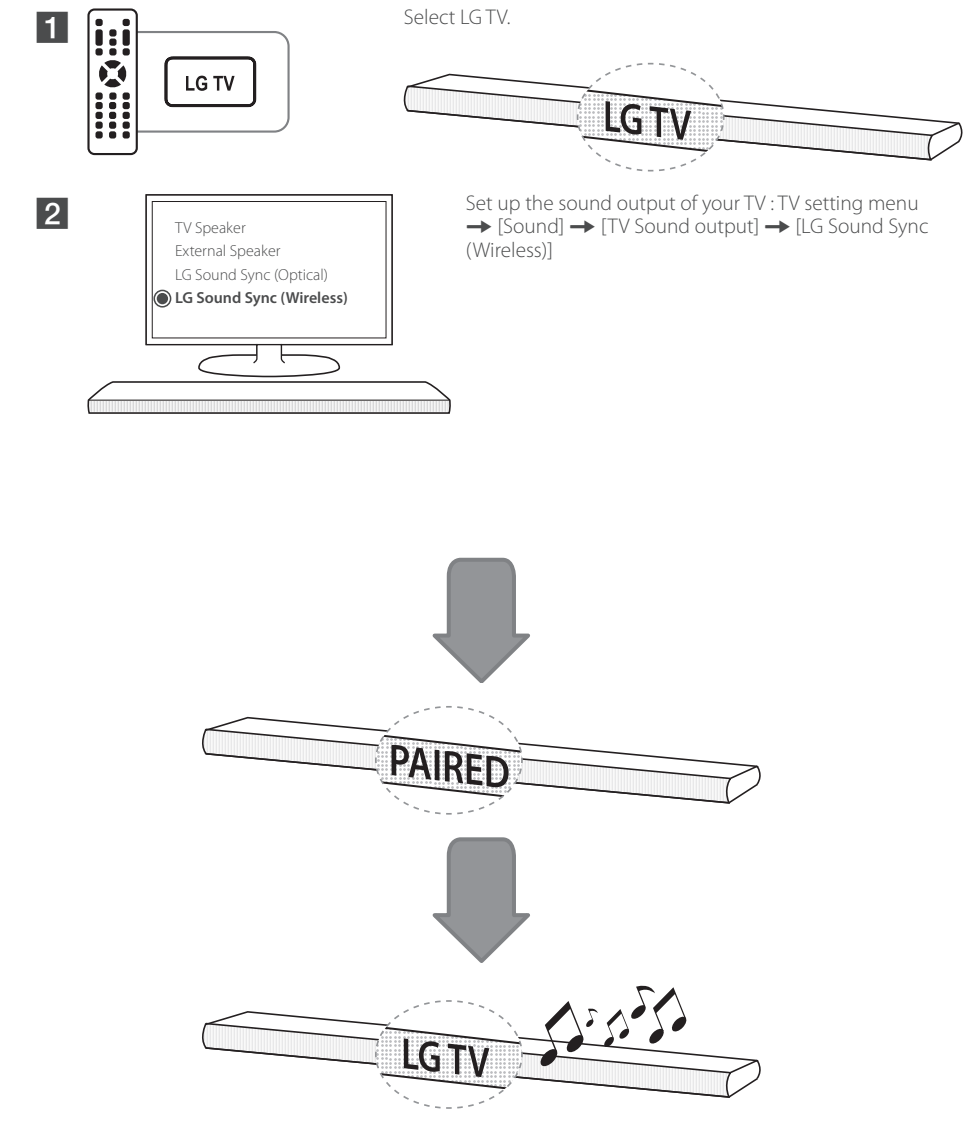
LG Sound Sync

LG Sound Sync enables you to control some functions of this unit by a remote control of your LG TV. Controllable functions are volume up/down and mute. Make sure that your TV has LG Sound Sync logo as shown above.

Optical

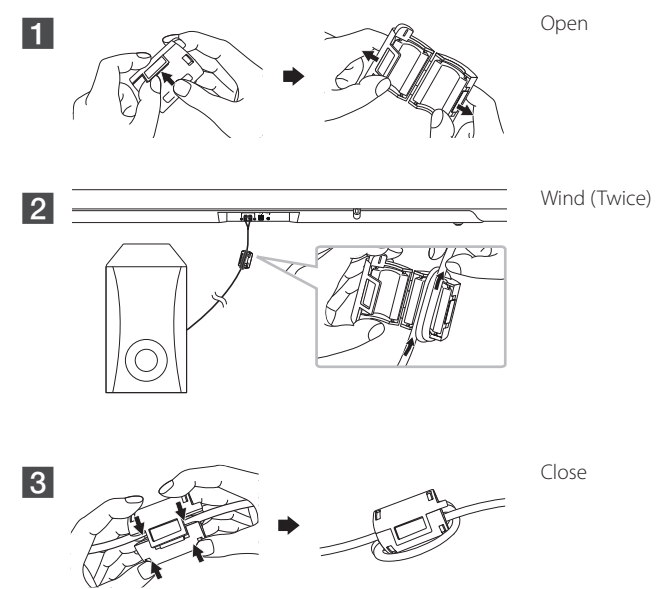


Wireless

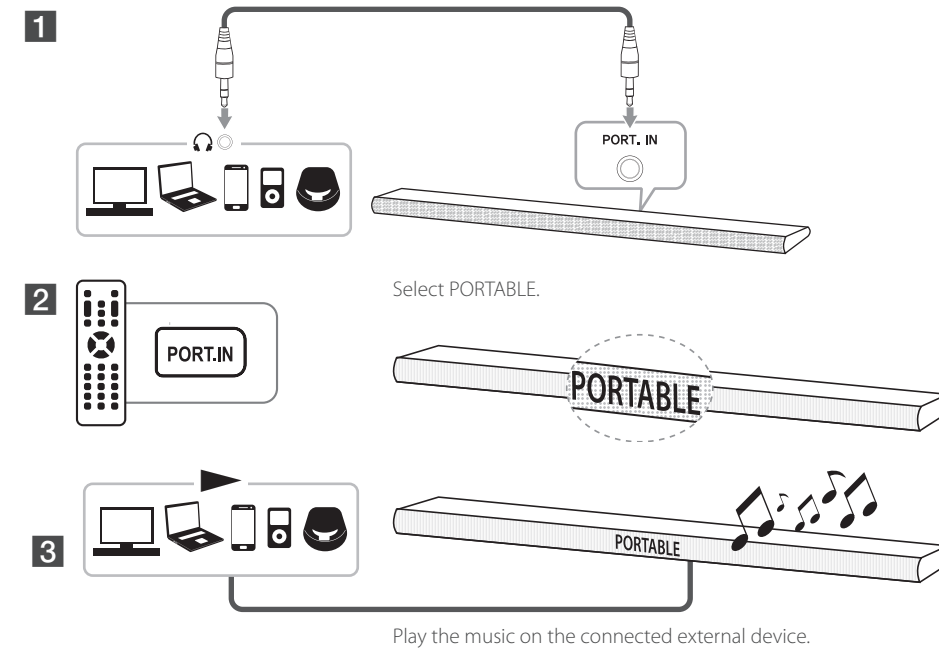


How to affix the Ferrite Core (Optional)

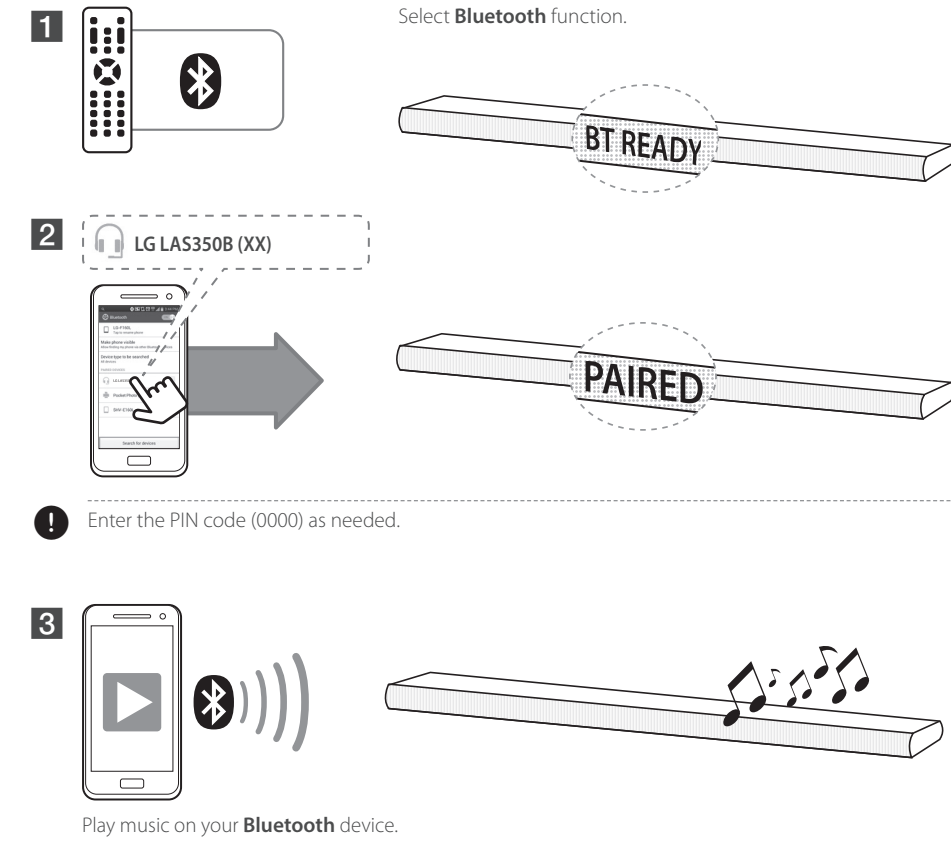
You may need to attach Ferrite core in order to reduce or eliminate any electrical interference.



Using External device



Using BLUETOOTH®

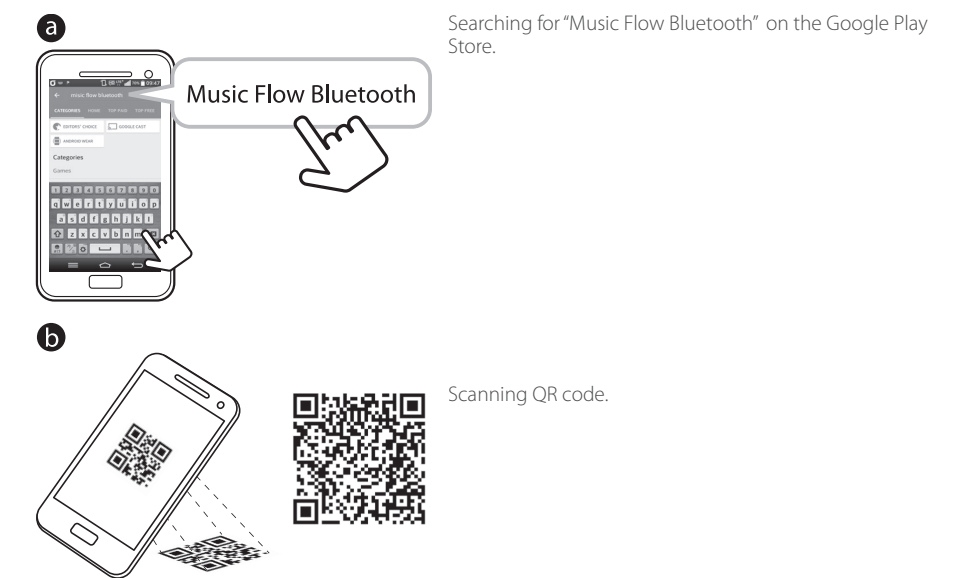


This unit can be connected up to 3 Bluetooth devices when you use Bluetooth mode. However, music playback is possible from only one of connected device.



Using "Music Flow Bluetooth" App

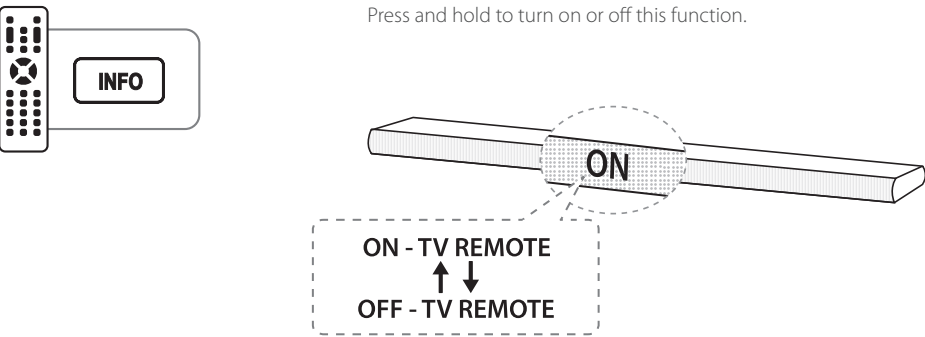
To use this unit more comfortably, install "Music Flow Bluetooth" on your Bluetooth devices. Select a way of installation (a or b).





Using your TV remote control

You can control some functions of this unit by your TV remote control even in other company's product. Controllable functions are volume up/down and mute.



- Supported TV brands

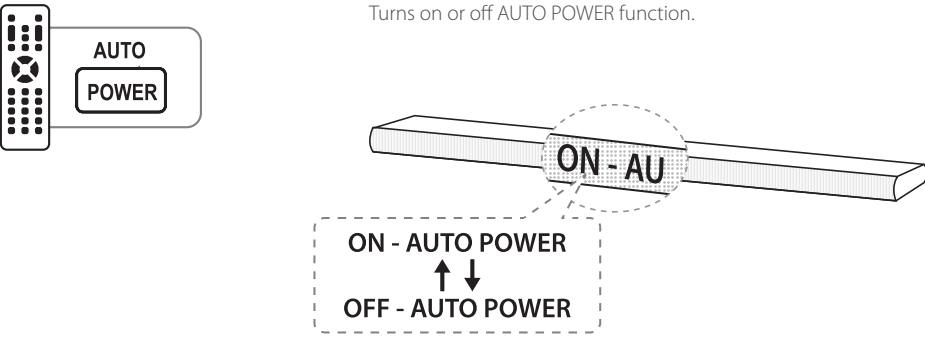
LG	Panasonic	Philips	Samsung	Sharp	Sony	Toshiba	Vizio
----	-----------	---------	---------	-------	------	---------	-------

- Make sure that the sound output of your TV is set to [External speaker].
- Under certain conditions this function may be limited.

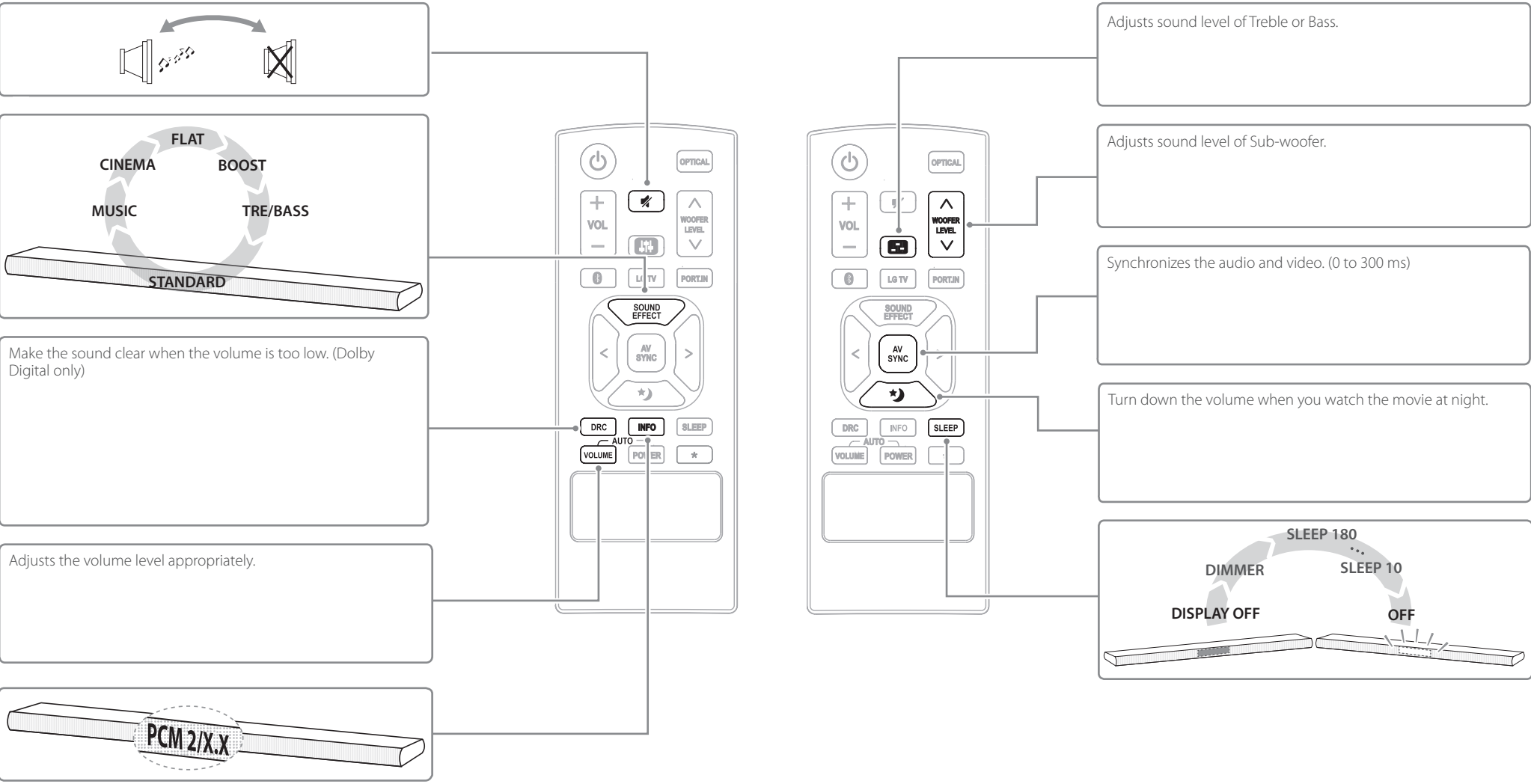


Auto power On/Off

This unit automatically turns on by an input source : Optical, LG TV or **Bluetooth**.

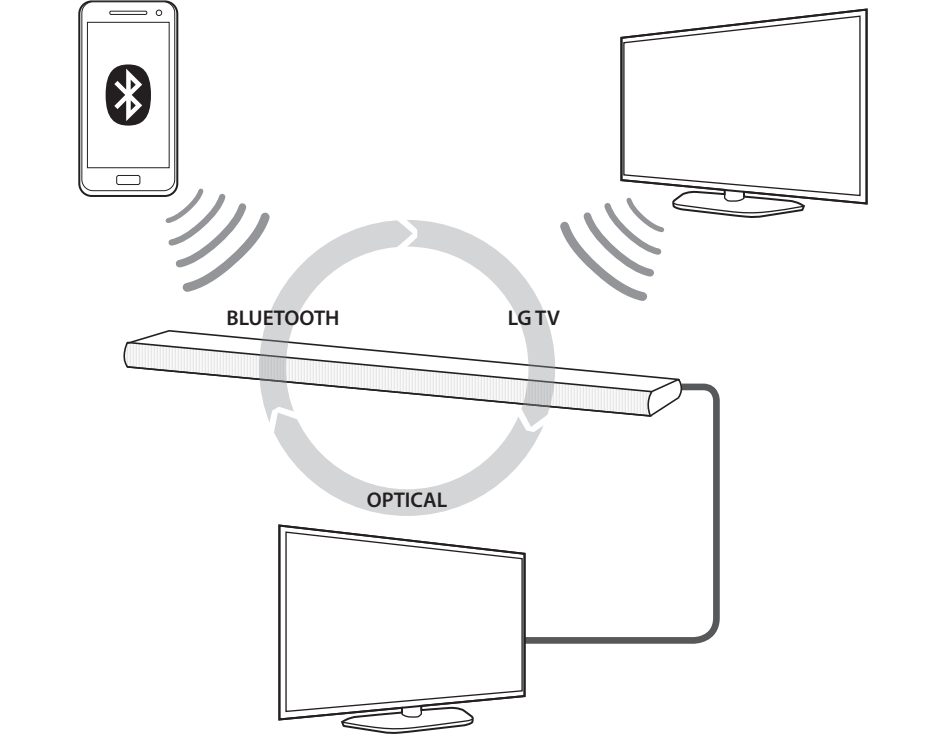


Additional Feature

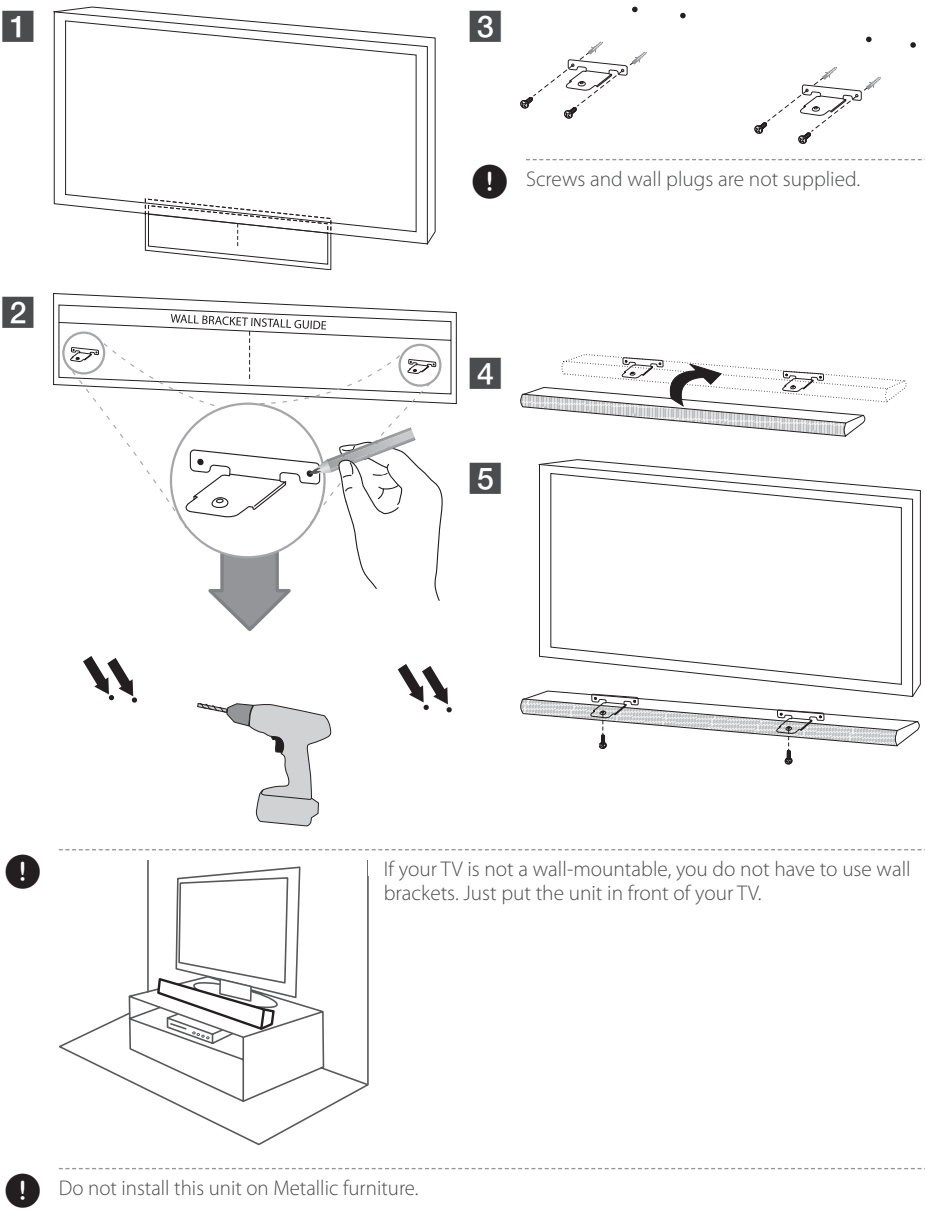


Auto Function Change

This unit recognizes input signals such as optical, **Bluetooth** and LG TV and then changes suitable function automatically.

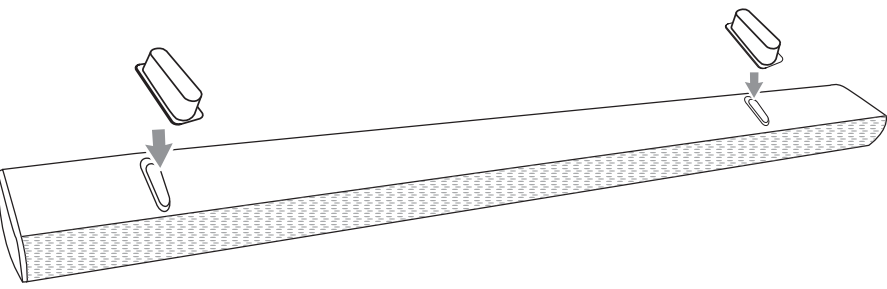


Installation



Installing cover foot

You can adjust height of the unit by using cover foot. (Foot height : 17 mm)



Additional Information

Bluetooth	Codec	SBC
-----------	-------	-----

- How to disconnect the wireless network connection or the wireless device
- Set up the AUTO POWER ON/OFF function to off and turn off the unit.



Specification

ENGLISH	
Power requirements	Refer to main label on the unit.
Power consumption	Refer to main label on the unit. Networked standby : 0.5 W (If all network ports are activated.)
Amplifier Total output	120 W

NOTICE: For Product Identification and Compliance/Safety labeling information please refer to Main Label on the bottom of Unit.
Design and specifications are subject to change without notice.

Sound Bar

Model : LAS350B

ENGLISH | SIMPLE MANUAL (2 of 2)

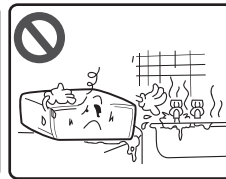
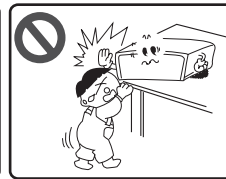
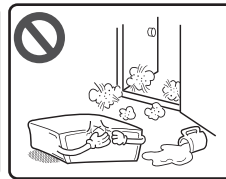
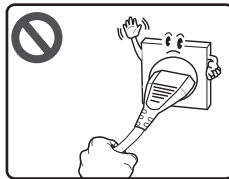
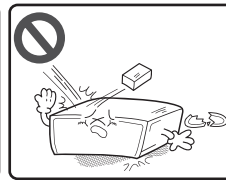
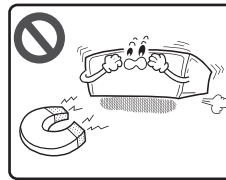
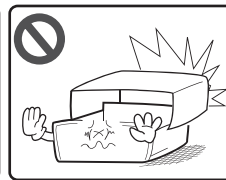
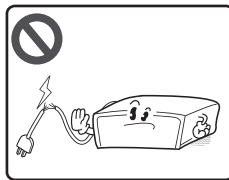
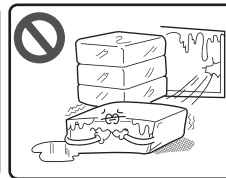
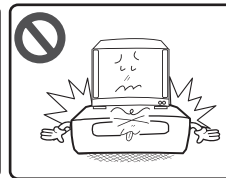
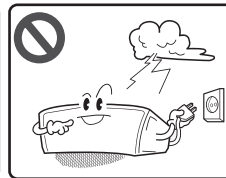
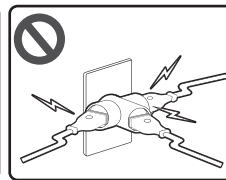
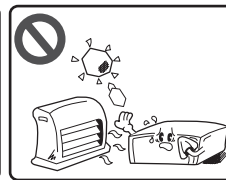
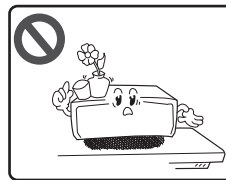
To view the instructions of advanced features, visit <http://www.lg.com> and then download Owner's Manual. Some of the content in this manual may differ from your unit.



www.lg.com



Safety Information



CAUTION: TO REDUCE THE RISK OF ELECTRIC SHOCK DO NOT REMOVE COVER (OR BACK) NO USER-SERVICEABLE PARTS INSIDE. REFER SERVICING TO QUALIFIED SERVICE PERSONNEL.



This lightning flash with arrowhead symbol within an equilateral triangle is intended to alert the user to the presence of uninsulated dangerous voltage within the product's enclosure that may be of sufficient magnitude to constitute a risk of electric shock to persons.



The exclamation point within an equilateral triangle is intended to alert the user to the presence of important operating and maintenance (servicing) instructions in the literature accompanying the product.

WARNING: TO PREVENT FIRE OR ELECTRIC SHOCK HAZARD, DO NOT EXPOSE THIS PRODUCT TO RAIN OR MOISTURE.

WARNING: Do not install this equipment in a confined space such as a book case or similar unit.

CAUTION: Do not use high voltage products around this product. (ex. Electrical swatter) This product may malfunction due to electrical shock.

CAUTION: Do not block any ventilation openings. Install in accordance with the manufacturer's instructions. Slots and openings in the cabinet are provided for ventilation and to ensure reliable operation of the product and to protect it from over heating. The openings shall be never be blocked by placing the product on a bed, sofa, rug or other similar surface. This product shall not be placed in a built-in installation such as a bookcase or rack unless proper ventilation is provided or the manufacturer's instruction has been adhered to.

CAUTION concerning the Power Cord

The Power Plug is the disconnecting device. In case of an emergency, the Power Plug must remain readily accessible.

CAUTION: The apparatus shall not be exposed to water (dripping or splashing) and no objects filled with liquids, such as vases, shall be placed on the apparatus.

This device is equipped with a portable battery or accumulator.

Safety way to remove the battery or the battery from the equipment: Remove the old battery or battery pack, follow the steps in reverse order than the assembly. To prevent contamination of the environment and bring on possible threat to human and animal health, the old battery or the battery put it in the appropriate container at designated collection points. Do not dispose of batteries or battery together with other waste. It is recommended that you use local, free reimbursement systems batteries and accumulators. The battery shall not be exposed to excessive heat such as sunshine, fire or the like.

NOTICE for using this Unit

LG Sound Sync

- For specific information of operating, refer to the instruction manual of your TV.
- When the connections failed, make sure of the conditions of this unit and your TV : power, function and cable connection.
- The amount of time to turn off this unit is different depending on your TV when you set AUTO POWER function to ON.

Auto power On/Off

- Depending on the connected device, this function may not operate.
- If you turned off the unit directly, it cannot be turned on automatically by AUTO POWER function. However the unit can be turned on by AUTO POWER function when optical signal comes in after 5 seconds of no signal.
- After the unit is turned on by AUTO POWER function, it will be automatically turned off if there is no signal for a certain period of time from the TV connected by LG Sound Sync (Optical/Wireless).

Auto Function Change

- When Auto Function Change does not work properly, turn off the external device and then turn on the device after 5 seconds.

Using BLUETOOTH®

- Sound quality may become lower or disconnected depending on the distance, interference or obstacles.
- Depending on the type of the device, you may not be able to use the **Bluetooth** function.
- The multi pairing connection is only supported on Android or iOS devices. (Multi pairing connection may not be supported depending on the connected device specifications.)
- Removable/detachable **Bluetooth** device (Ex : Dongle etc..) doesn't support multi pairing.

Using "Music Flow Bluetooth" App

- Android O/S : Ver 4.0.3 (or later)
- If you want to get more information to operate, tap [Setting] and turn on the User guide.



A series of 18 horizontal lines for writing, evenly spaced and spanning the width of the page.



A series of 18 horizontal lines for writing, evenly spaced and spanning the width of the page.



A series of 18 horizontal lines for writing, evenly spaced and spanning the width of the page.



A series of 18 horizontal lines for writing, evenly spaced and spanning the width of the page.