



SIMPLE MANUAL
MUSICflow H7 / H5

SMART Hi-Fi AUDIO

Wireless Multi-room

To view the instructions of advanced features,
visit <http://www.lg.com> and then download Owner's Manual.
Some of the content in this manual may differ from your unit.

MODEL

| | | |
|-------------|--------------|-------------|
| NP8740 (H7) | NP8740W (H7) | NP8740B(H7) |
| NP8540 (H5) | NP8540W (H5) | NP8540B(H5) |



* M F L 6 9 1 8 4 9 8 6 *

www.lg.com



CAUTION
RISK OF ELECTRIC SHOCK
DO NOT OPEN



CAUTION: TO REDUCE THE RISK OF ELECTRIC SHOCK DO NOT REMOVE COVER (OR BACK) NO USER-SERVICEABLE PARTS INSIDE REFER SERVICING TO QUALIFIED SERVICE PERSONNEL



This lightning flash with arrowhead symbol within an equilateral triangle is intended to alert the user to the presence of uninsulated dangerous voltage within the product's enclosure that may be of sufficient magnitude to constitute a risk of electric shock to persons.



The exclamation point within an equilateral triangle is intended to alert the user to the presence of important operating and maintenance (servicing) instructions in the literature accompanying the product.

WARNING:

- TO PREVENT FIRE OR ELECTRIC SHOCK HAZARD, DO NOT EXPOSE THIS PRODUCT TO RAIN OR MOISTURE.
- Do not install this equipment in a confined space such as a book case or similar unit.

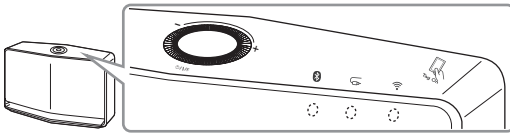
CAUTION:

- Do not use high voltage products around this product. (ex. Electrical swatter) This product may malfunction due to electrical shock.
- No naked flame sources, such as lighted candles, should be placed on the apparatus.
- Do not block any ventilation openings. Install in accordance with the manufacturer's instructions.
Slots and openings in the cabinet are provided for ventilation and to ensure reliable operation of the product and to protect it from over heating. The openings shall be never be blocked by placing the product on a bed, sofa, rug or other similar surface. This product shall not be placed in a built-in installation such as a bookcase or rack unless proper ventilation is provided or the manufacturer's instruction has been adhered to.
- The Power Plug is the disconnecting device. In case of an emergency, the Power Plug must remain readily accessible.

- The apparatus should not be exposed to water (dripping or splashing) and no objects filled with liquids, such as vases, should be placed on the apparatus.
- For safety marking information including product identification and supply ratings, please refer to the main label on the bottom or the other surface of the product.
- Only use the AC adapter supplied with this device. Do not use a power supply from another device or another manufacturer. Using any other power cable or power supply may cause damage to the device and void your warranty.

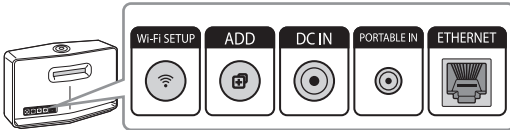


Top Panel



- ⏻ / I / F Standby / On / Selects function
- Volume wheel Adjusts volume
- 📶 Bluetooth status LED
- 📱 Portable In status LED
- 📶 Network status LED
- 📱 NFC Tag
Tag On

Rear Panel



The buttons are located on the rear.

- 📶 (Wi-Fi SETUP) Connects to wireless network.
- ➕ (ADD) Adds speakers to wireless network.
- DC IN Connect AC Adapter.
- PORTABLE IN Connect to portable device.
- ETHERNET Connect to a router.

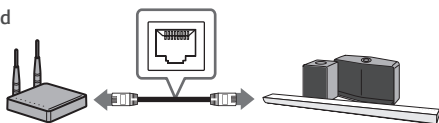
Connect speaker to Network

- 1 Check network condition**
A router connected to network should be installed.
- 2 Download LG Music Flow Application**



- 3 Connect devices to router**
Launch Music Flow Player App and follow the steps for wired or wireless connection displayed on the screen. All devices should be connected to same router.

Wired



Wireless




Auto Music Play



Automatically detects and plays music to your speakers.


Additional Information

Specification

| | |
|---------------------------|--|
| Power consumption | Refer to the main label. |
| | Networked standby : 5.4 W (If all network ports are activated.) |
| AC adapter | <ul style="list-style-type: none">• Model : DA-48A18• Manufacturer : Yang Ming Industrial• Input : 100-240 V ~ 50-60 HZ• Output : 18 V  2.67 A |
| Dimensions (W x H x D) | <ul style="list-style-type: none">• NP8740: Approx. (370 x 232 x 110) mm without foot• NP8540: Approx. (340 x 207 x 88) mm without foot |
| Net Weight | <ul style="list-style-type: none">• NP8740: 4.1 kg• NP8540: 3.25 kg |
| Bluetooth | Codec SBC |

- Design and specifications are subject to change without notice.

How to disconnect the wireless network connection or the wireless device

Press and hold the " (ADD)" button until you hear the beep sound twice.

OPEN SOURCE SOFTWARE NOTICE INFORMATION

To obtain the source code under GPL, LGPL, MPL, and other open source licenses, that is contained in this product, please visit <http://opensource.lge.com>.

In addition to the source code, all referred license terms, warranty disclaimers and copyright notices are available for download.

LG Electronics will also provide open source code to you on CD-ROM for a charge covering the cost of performing such distribution (such as the cost of media, shipping and handling) upon email request to opensource@lge.com. This offer is valid for three (3) years from the date on which you purchased the product.

