



OWNER'S MANUAL

LG Digital Signage

(MONITOR SIGNAGE)

Please read this manual carefully before operating your set and retain it for future reference.

98UM5K-B

110UM5K-B



www.lg.com

Copyright © 2023 LG Electronics Inc. All Rights Reserved.

TABLE OF CONTENTS

BASIC 3

- Checking the Accessories 3
- Learning the Buttons..... 4

GETTING READY 5

- External Equipment Setup..... 5
- Kensington Lock Device 6

CHECKING BEFORE INSTALLATION 7

- Installation Orientation 7
- Installation Location..... 8
- Wall Mount Holder 9

PRECAUTIONS FOR USE..... 10

- Dust..... 10
- Afterimage 10

PRODUCT SPECIFICATIONS 12

LICENCE..... 15

TO SEE THE WEB MANUALS (SOFTWARE USER GUIDE / INSTALLATION MANUAL) 16

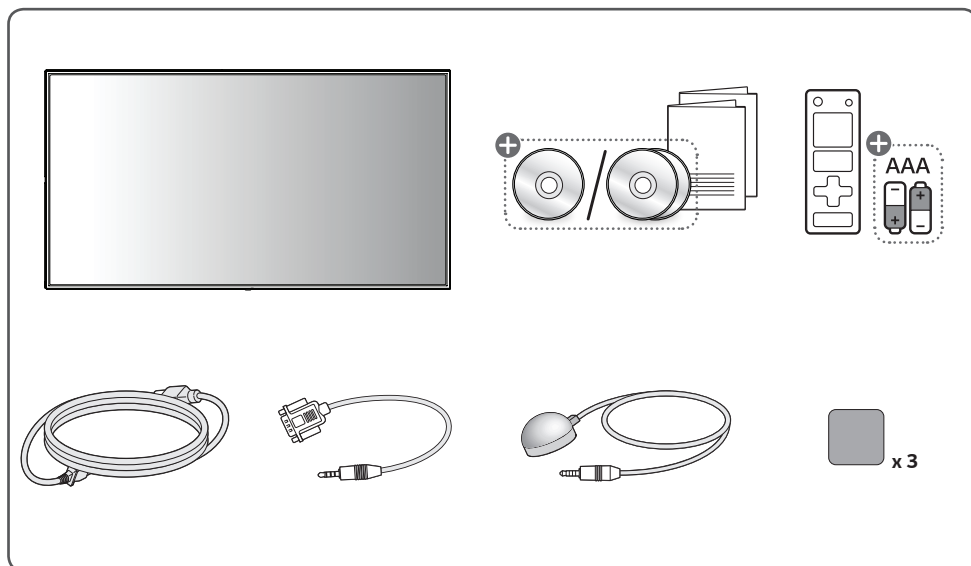
WARNING - This equipment is compliant with Class A of CISPR 32. In a residential environment this equipment may cause radio interference.

BASIC

! NOTE

- The accessories provided with your product may vary depending on the model or region.
- Product specifications or contents in this manual may be changed without prior notice due to upgrade of product functions.
- SuperSign Software & Manual
 - Visit <https://partner.lge.com> to download the latest SuperSign software and manual.

Checking the Accessories

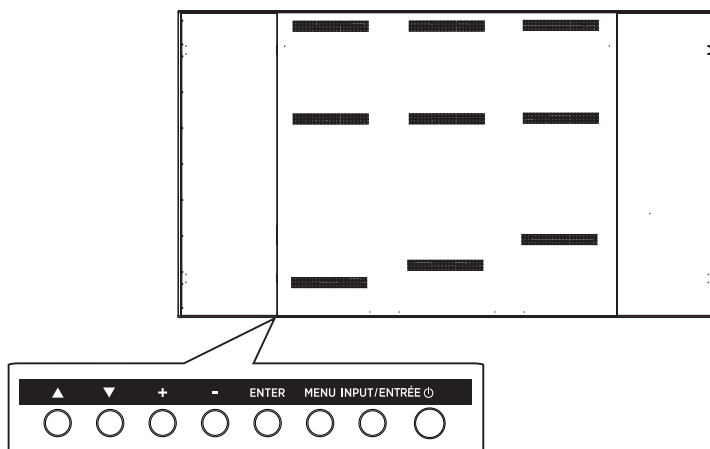


+ Depending on country

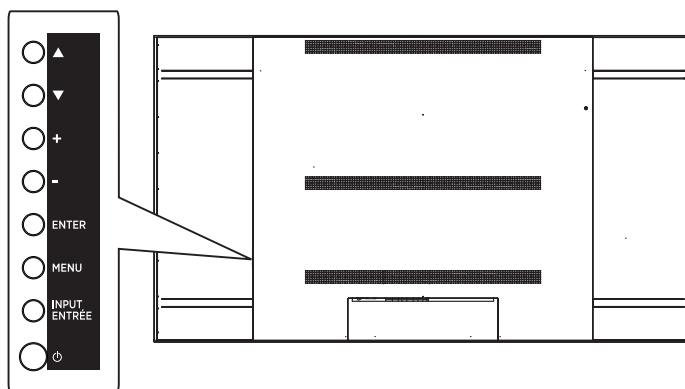
Learning the Buttons

The illustrations may differ depending on the model.

98UM5K-B



110UM5K-B



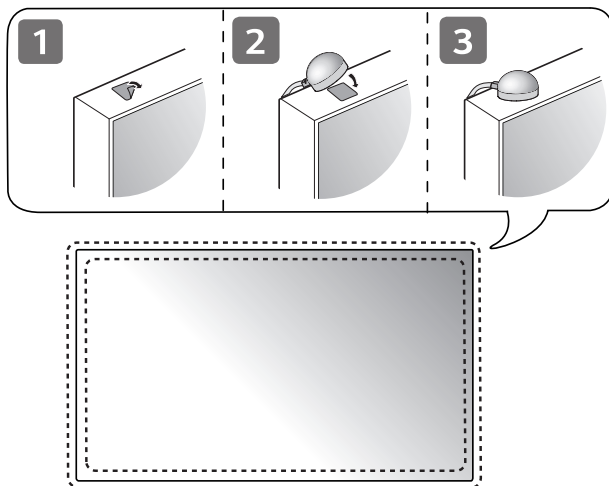
- ▲ ▼: Adjusts up and down.
- + -: Moves left and right.
- **ENTER**: Displays the current signal and mode.
- **MENU**: Accesses the main menus, or saves your input and exits the menus.
- **INPUT/ENTRÉE**: Change the input signal.
- **⏻**: Turns the power on and off.

GETTING READY

External Equipment Setup

IR Receiver

This allows a remote control sensor to be placed in a custom location.

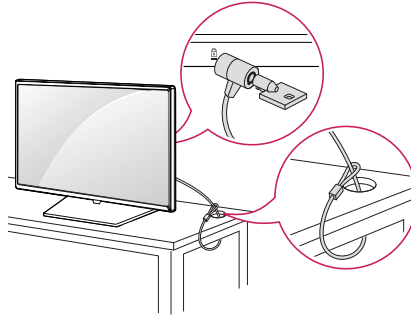


Kensington Lock Device

(This feature applies only to some models.)

The Kensington lock device connector is located on the back of the monitor. For more information on installation and use, refer to the user manual provided with the locking device.

Connect the Kensington security system cable between the monitor and a table.



! NOTE

- The Kensington lock device is an optional specification.
- This is a general illustration of installation and may look different from the product held by the customer.

CHECKING BEFORE INSTALLATION

We are not responsible for product damage caused by failure to follow the guide.

Installation Orientation

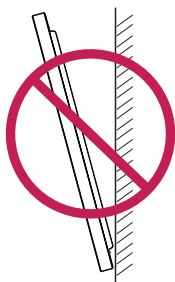
Using Vertically

(98UM5K-B Only)

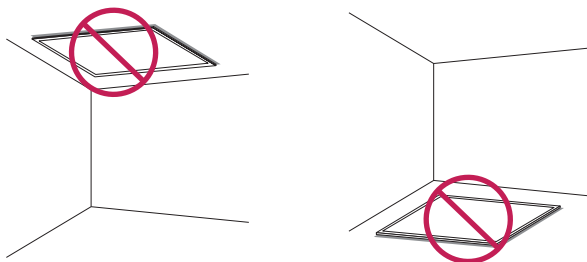
When installing vertically, rotate the monitor 90 degrees clockwise while facing the front of the screen.



Tilt Angle



Ceiling, Floor Orientation

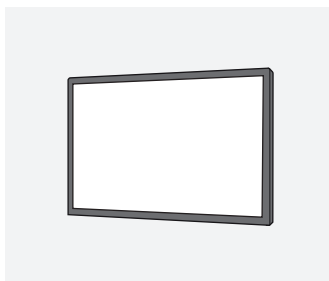


Installation Location

We are not responsible for product damage caused by failure to follow the guide.

Indoor

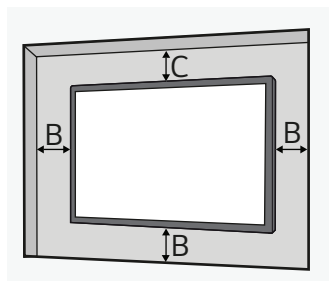
Installing on a Wall



A: 40 mm or more

- The warranty will not cover any damage caused by using the product in direct sunlight on the front panel.

Installing on a Recessed Wall



A: 40 mm or more

B: 50 mm or more

C: 100 mm or more

- The warranty will not cover any damage caused by using the product in direct sunlight on the front panel.

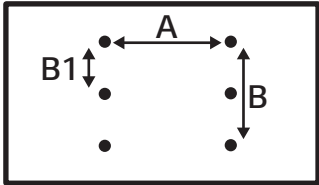
Outdoor

Outdoor Enclosed

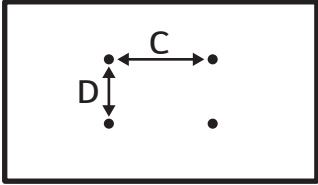


Wall Mount Holder


To install the monitor on a wall, attach a wall mount holder (optional) to the back of the monitor. Take caution, and ensure that the wall mount holder (optional) is securely fixed to the monitor and to the wall. The Wall Bracket dimensions of the wall mount by model are as follows.



98UM5K-B



110UM5K-B

| Model | Wall Bracket Dimensions (A x B) (mm) | Standard Dimensions | Length (Maximum) (mm) | Quantity |
|-----------|---|------------------------|--------------------------|----------|
| 98UM5K-B | 800 x 800 (B1: 400)  CAUTION • Fix all 6 screw holes of A x B1 (800 x 400), A x B (800 x 800). | M8 | 20 | 6 |
| Model | Wall Bracket Dimensions (C x D) (mm) | Standard Dimensions | Length (Maximum) (mm) | Quantity |
| 110UM5K-B | 1500 x 600 | M8 | 30 | 4 |

CAUTION

- Fix all 6 screw holes of A x B1 (800 x 400), A x B (800 x 800). It may cause damage or malfunction of the product and such cases are not covered under warranty. (98UM5K-B Only)
- Disconnect the power cord first, and then move or install the monitor. Otherwise, it may result in electric shock.
- If the monitor is installed on a ceiling or inclined wall, it may fall and result in injury.
- Damage to the monitor by tightening the screws too tightly may void your warranty.
- Use screws and wall mount plates conforming to Wall Mount standards. Breakage or personal injury due to use or misuse of inappropriate components is not covered by the warranty of this product.
- To prevent injury, this apparatus must be securely attached to the wall in accordance with the installation instructions. (This pertains only to Australia and New Zealand.)

(Australia only)

- This product must be installed by a professional installer.
- After the installation of the product in the customer premises, fully remove all product packaging (including any expanded or moulded plastic packaging materials) and recycle or dispose of such packaging responsibly. Do not dispose any expanded plastic packaging in the household bin.

NOTE

- Using screws longer than the indicated depth may damage the inside of the product. Be sure to use the proper length.
- For more information on installation, please refer to the user manual for the wall mount.

PRECAUTIONS FOR USE

Dust

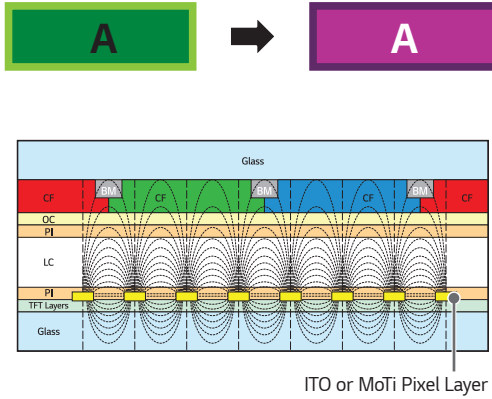
The warranty will not cover any damage caused by using the product in an excessively dusty environment.

Afterimage

- After-image appears when the product is turned off.
 - Pixels may be damaged rapidly if a still image is displayed on the screen for a long period of time. Use the screen-saver function.
 - Switching from a screen with high differences in luminance (black and white or grey) to a darker screen may cause an afterimage. This is normal due to the display characteristics of this product.
- When the LCD screen is in a still pattern for extended periods of use, a slight voltage difference may occur between the electrodes that operate the liquid crystal (LC). The voltage difference between the electrodes increases over time and tends to keep the liquid crystal aligned in one direction. At this time, the previous image remains, which is called an afterimage.
- Afterimages do not occur when continuously changing images are used but take place when a certain screen is fixed for a long time. The following are operational recommendations for reducing the occurrence of afterimages when using a fixed screen. The maximum recommended time for switching the screen is 12 hours. Shorter cycles are better for preventing afterimages.
- Recommended Usage Condition

1 Change the background colour and text colour at equal intervals.

- Afterimages occur less when the colours to be changed are complementary to one another.



2 Switch the screen at equal time intervals.

- Take caution, and ensure that text or images from before the screen change are not left in the same location after the screen change.



PRODUCT SPECIFICATIONS

Without prior notice, all product information and specifications contained in this manual are subject to change to improve the performance of the product.

| 98UM5K-B | | |
|--------------------------|---|--|
| Input/Output Ports | LAN IN, HDMI™ IN 1, HDMI™ IN 2, HDMI™ IN 3, DP IN, HDMI™ OUT, DVI-D IN, IR&LIGHT SENSOR, USB 2.0 IN, AUDIO IN, AUDIO OUT, RS-232C IN, RS-232C OUT | |
| Resolution | Recommended Resolution | HDMI1,2 / DisplayPort: 3840 x 2160 @ 60 Hz HDMI3: 3840 x 2160 @ 30 Hz DVI-D: 1920 x 1080 @ 60 Hz |
| | Max Resolution | - This may not be supported on some OS or graphics card types. |
| Power Voltage | 100-240 V~ 50/60 Hz 5.8 A | |
| Environmental Conditions | Operating Temperature | 0 °C to 40 °C |
| | Operating Humidity | 10 % to 80 % (Condition for preventing condensation) |
| | Storage Temperature | -20 °C to 60 °C |
| | Storage Humidity | 5 % to 85 % (Condition for preventing condensation) * Product box packaging storage conditions |

| 110UM5K-B | | |
|--------------------------|---|--|
| Input/Output Ports | LAN IN, HDMI™ IN 1, HDMI™ IN 2, HDMI™ IN 3, DP IN, HDMI™ OUT, DVI-D IN, IR&LIGHT SENSOR, USB 2.0 IN, AUDIO IN, AUDIO OUT, RS-232C IN, RS-232C OUT | |
| Resolution | Recommended Resolution | HDMI1,2 / DisplayPort: 3840 x 2160 @ 60 Hz HDMI3: 3840 x 2160 @ 30 Hz DVI-D: 1920 x 1080 @ 60 Hz |
| | Max Resolution | - This may not be supported on some OS or graphics card types. |
| Power Voltage | 100-240 V~ 50/60 Hz 6.0 A | |
| Environmental Conditions | Operating Temperature | 0 °C to 40 °C |
| | Operating Humidity | 10 % to 80 % (Condition for preventing condensation) |
| | Storage Temperature | -20 °C to 60 °C |
| | Storage Humidity | 5 % to 85 % (Condition for preventing condensation) * Product box packaging storage conditions |

| Model Name | Size (Width x Height x Depth) (mm) | Weight (kg) |
|------------|------------------------------------|-------------|
| 98UM5K-B | 2198 x 1253 x 79.5 | 78 |
| 110UM5K-B | 2474 x 1408 x 99 | 80 |

HDMI / DVI-D / DisplayPort (PC) Support mode

| Resolution | Horizontal frequency (kHz) | Vertical frequency (Hz) | Remark |
|-------------|----------------------------|-------------------------|------------------------|
| 800 x 600 | 37.879 | 60.317 | |
| 1024 x 768 | 48.363 | 60 | |
| 1280 x 720 | 44.772 | 59.855 | |
| 1280 x 1024 | 63.981 | 60.02 | |
| 1680 x 1050 | 65.29 | 59.954 | |
| 1920 x 1080 | 67.5 | 60 | |
| 3840 x 2160 | 67.5 | 30 | HDMI1/2/3, DisplayPort |
| 3840 x 2160 | 135 | 60 | HDMI1/2, DisplayPort |

HDMI / DisplayPort (DTV) Support mode

| Resolution | Horizontal frequency (kHz) | Vertical frequency (Hz) | Remark |
|------------|----------------------------|-------------------------|------------------------|
| 480/60p | 31.5 | 60 | |
| 576/50p | 31.25 | 50 | |
| 720/50p | 37.5 | 50 | |
| 720/60p | 45 | 60 | |
| 1080/50i | 28.1 | 50 | |
| 1080/60i | 33.75 | 60 | |
| 1080/50p | 56.25 | 50 | |
| 1080/60p | 67.432 | 59.94 | |
| 1080/60p | 67.5 | 60 | |
| 2160/30p | 67.5 | 30 | HDMI1/2/3, DisplayPort |
| 2160/50p | 112.5 | 50 | HDMI1/2, DisplayPort |
| 2160/60p | 135 | 60 | HDMI1/2, DisplayPort |

| Wireless module (LGSBWAC92) Specifications | |
|---|---------------------------|
| Wireless LAN (IEEE 802.11a/b/g/n/ac) | |
| Frequency range (MHz) | Output power (Max.) (dBm) |
| 2400 to 2483.5 | 18 |
| 5150 to 5725 | 18 |
| 5725 to 5850 | 12 |
| Bluetooth | |
| Frequency range (MHz) | Output power (Max.) (dBm) |
| 2400 to 2483.5 | 8 |
| <ul style="list-style-type: none">As band channels can vary per country, the user cannot change or adjust the operating frequency. This product is configured for the regional frequency table.For consideration of the user, this device should be installed and operated with a minimum distance of 20 cm between the device and the body. | |

LICENCE

Supported licenses may differ by model. For more information of the licenses, visit www.lg.com.



The terms HDMI, HDMI High-Definition Multimedia Interface, HDMI trade dress and the HDMI Logos are trademarks or registered trademarks of HDMI Licensing Administrator, Inc.

Manufactured under license from Dolby Laboratories. Dolby, Dolby Vision, Dolby Vision IQ, Dolby Audio, Dolby Atmos, and the double-D symbol are trademarks of Dolby Laboratories Licensing Corporation.



The Bluetooth® word mark and logos are registered trademarks owned by Bluetooth SIG, Inc. and any use of such marks by LG Electronics Inc. is under license. Other trademarks and trade names are those of their respective owners.

TO SEE THE WEB MANUALS (SOFTWARE USER GUIDE / INSTALLATION MANUAL)

You can find more information about the LG Digital Signage (Monitor Signage) in the web manuals (Software User Guide / Installation Manual).

For more information, visit the LG website at <http://partner.lge.com>.



The model and serial number of the product are located on the back and on one side of the product. Record them below in case you ever need service.

MODEL _____
SERIAL NO. _____

Temporary noise is normal when powering ON or OFF this device.