

Images shown in manual may vary depending on model

+ Depending on model

+ Depending on country

Unpacking

Check your product box for the following items. If there are any missing accessories, contact the local dealer where you purchased your product. The illustrations in this manual may differ from the actual product and item.

MFL71829607



(2106-REV00)



It is recommended that use the supplied components.



www.lg.com

You can download manuals from the LGE website.

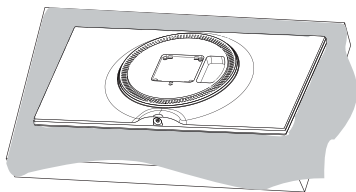


CAUTION

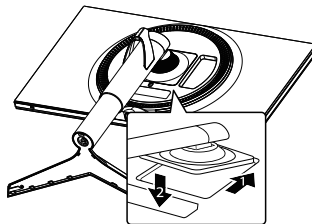
Image shown may differ from your monitor.

When attaching the stand to the monitor set, place the screen facing down on a flat cushioned table or surface to protect the screen from scratches.

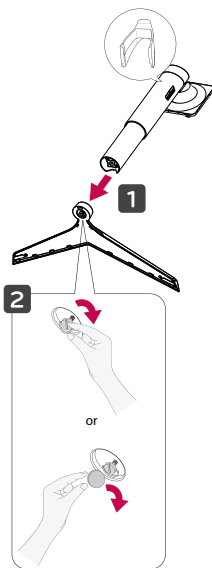
1



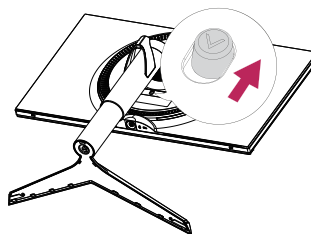
3



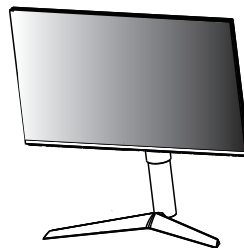
2

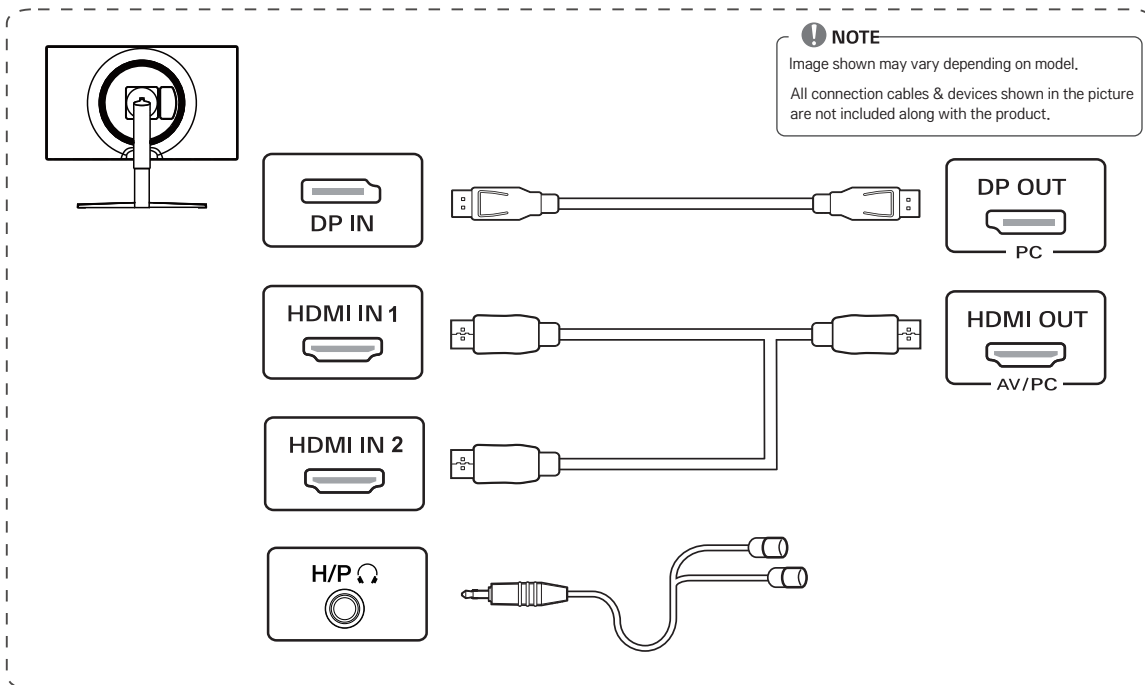
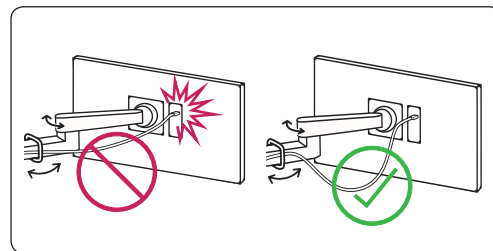
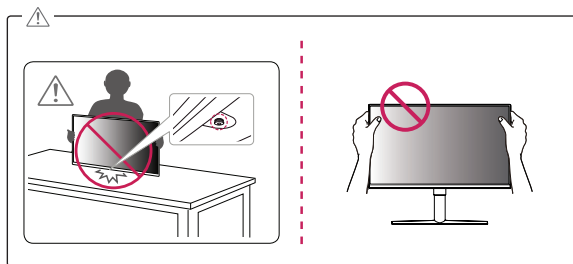


4



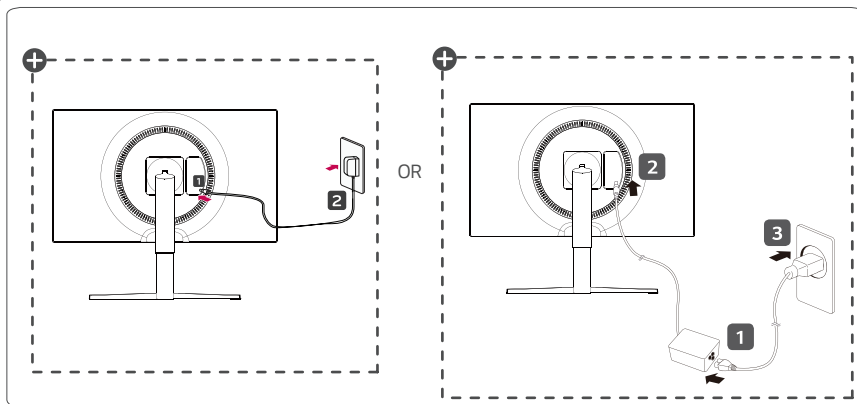
5







- Using a DVI to HDMI / DP (DisplayPort) to HDMI cable may cause compatibility issues.
- Make sure to use the supplied cable. Otherwise, this may cause the device to malfunction.



+: Depending on country

+: Depending on model

