

SIMPLE MANUAL

# DVD Home Theater System

To view the instructions of advanced features,  
visit <http://www.lg.com> and then download Owner's Manual.  
Some of the content in this manual may differ from your unit.

MODEL  
LHD657



[www.lg.com](http://www.lg.com)

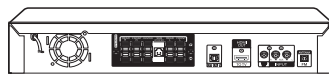


## Front Panel



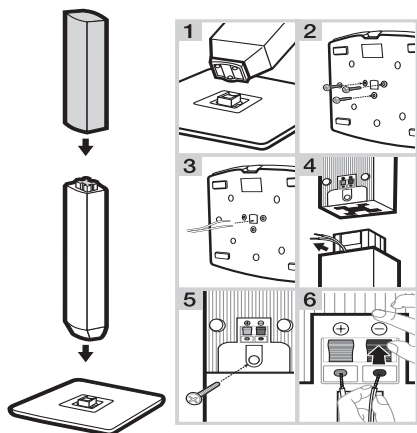
- MIC 1/2** ..... Connect a microphone.
- PORT. IN** ..... Connect to a Portable device.
- USB Port** ..... Connect a USB device.
- △** ..... Disc Tray Open / Close
- >II** ..... Starts / Pauses playback.
- ..... Stops playback.
- F** ..... Changes the input source or function.
- / +** ..... Adjusts volume.
- ⏻ / I** ..... Power On / Off

## Rear Panel



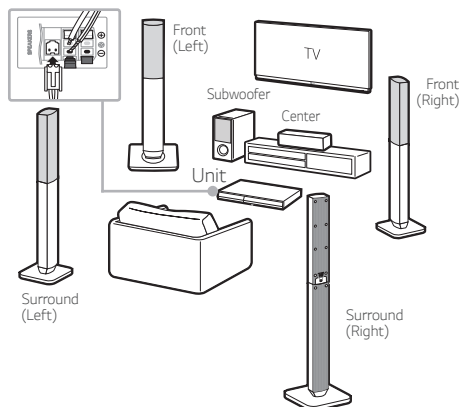
- SPEAKERS** ..... Connect to speakers.
- OPTICAL IN** ..... Connect to digital device.
- HDMI OUT TO TV** ..... Connect to TV.
- VIDEO OUT** ..... Connect to TV.
- AUX (L/R) INPUT** ..... Connect to analogue device.
- ANTENNA FM** ..... Connect to radio antenna.

## 1 Speaker Assembling



## 2 Speaker Connection

! Speaker design and connection method may be different according to models.

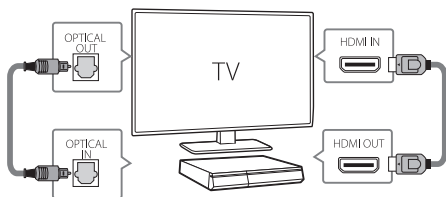


## 3

## TV Connection

## HDMI &amp; Optical Connection

- 1 Connect the Unit to the TV using HDMI & Optical cable.
- 2 Set the input selector to HDMI on the TV.
- 3 Set up [External Speaker (Optical)] on your TV setting menu.
- 4 Follow the instructions on the TV screen using remote control.



## 4

## Home Menu


Home menu appears on the TV screen. Enjoy various functions on the unit.



For more information, download the online owner's manual. <http://www.lg.com>

## Additional Information

### Specification

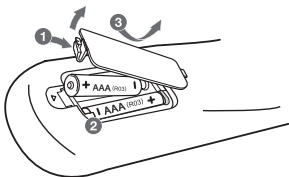
Power requirements	Refer to main label.
Power consumption	Refer to main label. Networked standby : 0.5 W (If all network ports are activated.)
Dimensions (W x H x D)	Approx. 360 mm x 58 mm x 298.5 mm
Net Weight	Approx. 2.46 kg
Bus Power Supply (USB)	5 V  500 mA
Amplifier (Total RMS output power)	1,000 W

Design and specifications are subject to change without notice.

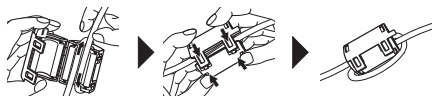
### How to disconnect the wireless network connection or the wireless device

Turn off the unit by pressing the power button for more than 5 seconds.

### Replacement of battery



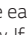
### About Ferrite Core (Optional)



Wind HDMI cable around the ferrite core.

**POWER:** This unit operates on a mains supply of 200 - 240 V ~, 50 / 60 Hz.

**Wiring:** This unit is supplied with a BS 1363 approved main plug. When replacing the fuse, always use of the same rating approved to BS 1362. Never use this plug with the fuse cover omitted. To obtain a replacement fuse cover contact your dealer. If the type of plug supplied is not suitable for the mains sockets in your home, then the plug should be removed and a suitable type fitted. Please refer to the wiring instructions below:

**Warning:** A mains plug removed from the mains lead of this unit must be destroyed. A mains plug with bared wires is hazardous if inserted in a mains socket. Do not connect either wire to the earth pin, marked with the letter E or with the earth symbol  or coloured green or green and yellow. If any other plug is fitted, use same rating of fuse in the plug.

**Important:** The wires in this mains lead are coloured in accordance with the following codes:

- **BLUE: NEUTRAL, BROWN: LIVE:** As the colours of the wires in the mains lead of this unit may not correspond with the coloured marking identifying the terminals in your plug, proceed as follows: The wire which is coloured blue must be connected to the terminal which is marked with the letter N or coloured black. The wire which is coloured brown must be connected to the terminal which is marked with the letter L or coloured red.