



## SIMPLE MANUAL

# Wireless Sound Bar

Please read this manual carefully before operating your set and retain it for future reference.

To view the instructions of advanced features, visit <http://www.lg.com> and then download Owner's Manual.

Some of the content in this manual may differ from your unit.

MODEL

SNH5



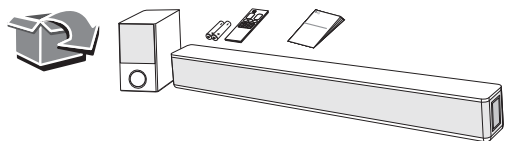
MFL71670159

2102\_Rev02

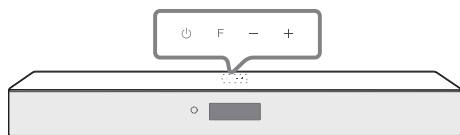
|             |            |          |            |          |          |          |           |            |
|-------------|------------|----------|------------|----------|----------|----------|-----------|------------|
| ENGLISH     | DEUTSCH    | FRANÇAIS | NEDERLANDS | ITALIANO | ESPAÑOL  | ΕΛΛΗΝΙΚΑ | PORTUGUÊS | MAGYAR     |
| ČESKY       | SLOVENČINA | POLSKI   | ROMÂNĂ     | LATVIEŠU | HRVATSKI | SRPSKI   | БЪЛГАРСКИ | МАКЕДОНСКИ |
| SLOVENŠČINA | SHQIP      | BOSANSKI | SVENSKA    | DANSK    | NORSK    | SUOMI    |           |            |

[www.lg.com](http://www.lg.com)

Copyright © 2020-2021 LG Electronics Inc. All Rights Reserved.



## Front Panel

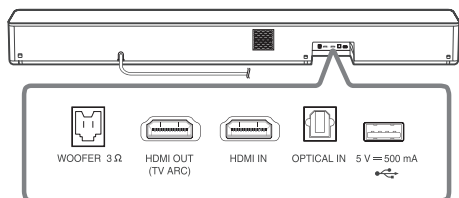


**⏻ (Standby)** ..... Switches the unit ON or OFF.

**F (Function)** ..... Selects function.

**-/+ (Volume)** ..... Adjusts volume.

## Rear Panel



**WOOFER 3 Ω** ..... Connect to a Subwoofer.

**HDMI OUT (TV ARC)** ..... Connect to a TV.

**HDMI IN** ..... Connect to device with HDMI OUT.

**OPTICAL IN** ..... Connect to an optical device.

**USB Port** ..... Connect to a USB device.

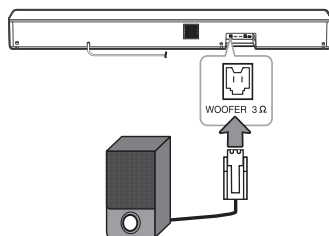


Make sure to properly align and connect the optical cable; improper alignment may cause damage to the jack.

## Subwoofer Connection

Place the subwoofer near the sound bar and follow steps below.

- 1 Connect a subwoofer cord to the sound bar.
  - When connecting a Subwoofer cord to the unit, insert the connector until it clicks.
- 2 Turn on the sound bar.

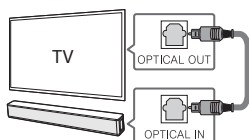


## TV Connection

Connect the sound bar and TV using Optical (A) or HDMI ARC (B).

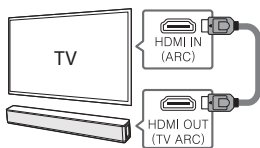
### A Optical Connection

- 1 Connect the sound bar to the TV using Optical cable.
- 2 Set up [External Speaker (Optical)] on your TV setting menu.



### B HDMI (ARC) Connection

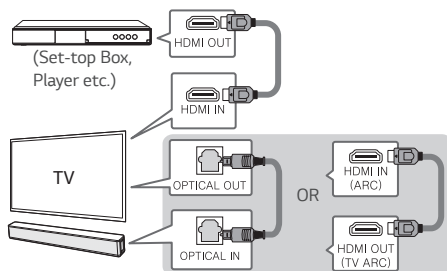
- 1 Connect the sound bar to the TV using HDMI cable.
- 2 Set up [External Speaker (HDMI ARC)] on your TV setting menu.



- HDMI connection is unavailable if your TV does not support HDMI ARC.
- If this unit is connected by OPTICAL and ARC at the same time, the ARC signal has a higher priority.

## Additional Device Connection

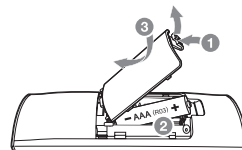
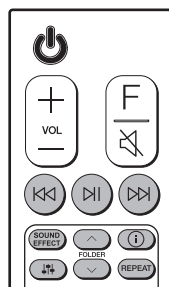
- 1 Connect to the external device like as follow.



- 2 Set the input source by pressing F repeatedly.

## Remote control

### Replacement of Battery



⏮/⏭: Skip/Search

⏸: Play/Pause

- **Bluetooth connection lock (BT LOCK):** Select the **Bluetooth** function by pressing **F** repeatedly. Long press **⏸** and press it again to limit Bluetooth connection to only BT and LG TV.

**SOUND EFFECT:** Selects a sound effect mode.

- **TV remote:** Long press **SOUND EFFECT** and press it again to use TV remote control.

**FOLDER** ^/∨: Searches a folder.

**i**: Displays the information of a file, an input source or connected **Bluetooth** device name.


- **Auto Power ON/OFF:** Long press **i** and press it again.

⏮/⏭: Adjusts the sound level of the adjustable speakers.

**REPEAT:** Listens to your files repeatedly or randomly.

## Additional Information

### Specification

|                                    |  |
|------------------------------------|--|
| Power Requirements                 | Refer to the main label.   |
| Power consumption                  | Refer to the main label.   |
|                                    | Networked standby : 1.5 W<br>(If all network ports are activated.)                           |
| Dimensions (W x H x D)             | Approx.<br>990.0 mm X 97.0 mm X<br>125.0 mm With foot  |
| Bus Power Supply (USB)             | 5 V  500 mA |
| Amplifier (Total RMS Output power) | 600 W RMS  |

Design and specifications are subject to change without notice.

### How to disconnect the wireless network connection or the wireless device

Set up the AUTO POWER ON/OFF function to off and turn off the unit.

## OPEN SOURCE SOFTWARE NOTICE INFORMATION

To obtain the source code under GPL, LGPL, MPL, and other open source licenses, that is contained in this product, please visit <http://opensource.lge.com>.

In addition to the source code, all referred license terms, warranty disclaimers and copyright notices are available for download.

LG Electronics will also provide open source code to you on CD-ROM for a charge covering the cost of performing such distribution (such as the cost of media, shipping, and handling) upon email request to [opensource@lge.com](mailto:opensource@lge.com).

This offer is valid for a period of three years after our last shipment of this product. This offer is valid to anyone in receipt of this information.

### Declaration of Conformity



Hereby, LG Electronics declares that the radio equipment type Wireless Sound Bar is in compliance with Directive 2014/53/EU. The full text of the EU declaration of conformity is available at the following internet address:

<http://www.lg.com/global/support/cedoc/cedoc#>

For consideration of the user, this device should be installed and operated with a minimum distance of 20 cm between the device and the body.

| Frequency range  | Output power (Max.) |
|------------------|---------------------|
| 2402 to 2480 MHz | 10 dBm              |

