

INSTALLATION MANUAL

AIR CONDITIONER

Please read this installation manual completely before installing the product. Installation work must be performed in accordance with the national wiring standards by authorized personnel only. Please retain this installation manual for future reference after reading it thoroughly.

Modbus Converter
PP485B00K



P/NO : MFL57868535

MALTI	PORTUGUÊS	ENGLISH
SLOVENČINA	MAGYAR	ITALIANO
SLOVENŠČINA	БЪЛГАРСКИ	ESPAÑOL
LATVIŠU VALODA	SRPSKI	FRANÇAIS
LETUVŪ VALBA	HRVATSKI	DEUTSCH
GAEILGE	SVENSKA	ΕΛΛΗΝΙΚΑ
МАКЕДОНСКИ	NORSK	ČEŠTINA
SHQIP	SUOMI	NEDERLANDS
ISLENSKA	DANSK	POLSKI
BOSANSKI	EESTI KEEL	LIMBA ROMÂNĂ

SAFETY PRECAUTIONS

To prevent injury to the user or other people and property damage, the following instructions must be followed.

- Incorrect operation due to ignoring instruction will cause harm or damage. The seriousness is classified by the following indications.

! WARNING

This symbol indicates the possibility of death or serious injury.

! CAUTION

This symbol indicates the possibility of injury or damage.

- Meanings of symbols used in this manual are as shown below.

! WARNING

Installation

- Don't touch with the hands while the power is on.
 - There is risk of fire or electric shock.
- Use standard parts(connector).
 - Do not disassemble or repair the product. There is risk of fire or electric shock.
- For electrical work, contact the dealer, seller, a qualified electrician, or an Authorized Service Center.
 - Do not disassemble or repair the product. There is risk of fire or electric shock.
- Use the correctly rated breaker or fuse.
 - There is risk of fire or electric shock.
- Do not install, remove, or re-install the unit by yourself (customer).
 - There is risk of fire, electric shock, explosion, or injury.
- For installation, always contact the dealer or an Authorized Service Center.
 - There is risk of fire, electric shock, explosion, or injury.

Operation

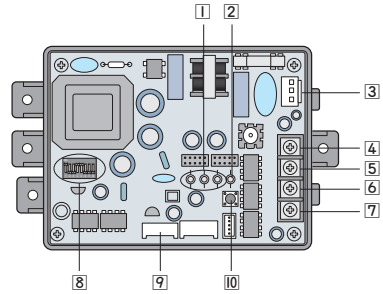
- When the product is soaked (flooded or submerged), contact an Authorized Service Center.
 - There is risk of fire or electric shock.
- Be cautious that water could not enter the product.
 - There is risk of fire, electric shock, or product damage.

! NOTE

Install and use by qualified personnel only.

PART DESCRIPTION

PP485B00K



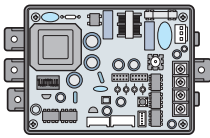
Modbus Converter

- 1** LED01G, 02G, 03G: Communication Status LED
- 2** LED1:RS-485 Status LED
- 3** CN_PWR: 220V~ Connector
- 4** +10V: DC 10 V Terminal
- 5** GND: Ground
- 6** BUS_A: *RS-485 (+) Terminal (Refer to note)
- 7** BUS_B: RS-485 (-) Terminal
- 8** DIP Switch: Product Selection (Refer to the 「DIP Switch Configuration」)
- 9** CN_OUT: Outdoor Unit Connector
- 10** Reset Switch: Modbus Converter Reset

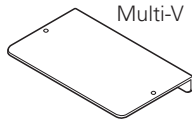
! NOTE

RS-485 is one of the international interface standards for serial communication.

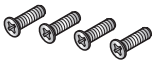
ACCESSORY PARTS



PP485B00K



BRACKET (1EA)



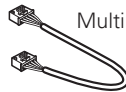
SCREW (4EA)



WIRE ASSY 1(1EA)



WIRE ASSY 2(1EA)



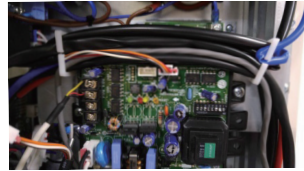
WIRE ASSY 3(1EA)

Others : Tie Wrap (3 EA) - Cable Tie
Clamp (1 EA)

6. [2] Check RS-485 Communication Status LED:

- Normal : LED blinks when PI485 receives data from central controller.
- Error : Check the wiring connections

7. Finally if all of the above steps are OK, then tie the cables by tie wraps & clamp.



* Example about 14kW ODU.

CAUTION

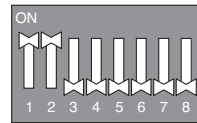
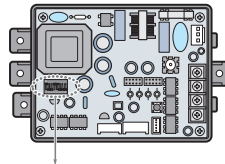
Install the Modbus Converter after checking the hole for screw.

INSTALLATION GUIDE

Installation Steps

1. [9] Connect CN_OUT with Outdoor Unit by the cable (provided)
2. [6] [7] Connect RS-485 BUS_A(+) and BUS_B(-) with other network products (ex. Central Controller , I-Gateway.....)
3. [8] Select DIP Switch Configuration.
4. [3] Connect CN_PWR with Outdoor PCB Power connector
5. After Power is ON, check the Communication LED [1]
 - LED2G(Yellow), LED3G(Orange)
 - Normal : LED blinks continuously
 - Error : Check the DIP Switch setting & wiring connections.

DIP Switch Configuration



→ 1 and 2 ON, All others OFF

CAUTION

The wrong setting of air-conditioner switch could cause malfunctioning. Switch setting must be done carefully. Push the Reset button after changing the Dip switch.



Representative: LG Electronics Inc. EU Representative, Krijgsman 1, 1186
DM Amstelveen, The Netherlands
Manufacturer: LG Electronics Inc. Changwon 2nd factory, 84, Wanam-ro,
Seongsan-gu, Changwon-si, Gyeongsangnam-do, KOREA