



SIMPLE MANUAL

HIGH POWER SPEAKER SYSTEM

ENGLISH

To view the instructions of advanced features,
visit <http://www.lg.com> and then download Owner's Manual.
Some of the content in this manual may differ from your unit.

MODEL
FH2



www.lg.com
Copyright © 2017-2021 LG Electronics Inc. All Rights Reserved.

Precautions on handling a battery

- This unit has a built-in valve regulated lead-acid rechargeable battery. (12 V/7.0 Ah)
- Do not use the battery in a closed room or near fire.
- Charge the battery under the charging condition specified.
- If any corrosion of the terminals, leakage or deformation of the case of the battery is found, do not use the battery.
- If the battery leaks, while protecting your hands or clothing, remove the battery from the device and should be extremely careful not to infect the skin or eyes.
- If the battery leaks and the liquid inside spills on the skin or clothing, immediately wash it off with plenty of clean water. If the liquid splashes into eyes, immediately flush the eyes with plenty of clean water and consult a doctor.
- Avoid mixed usage of batteries differing in type, manufacturer or history of use.
- Do not throw the battery in fire nor heat the battery.
- Do not short of battery terminals.
- Do not attempt to disassemble, remodel or destroy the battery.
- Do not place the battery near a child.
- The battery can be replaced. If you need to charge your battery more and more frequently, it might be time to replace it. The battery should be serviced by LG Electronics customer care center.
- Charge fully before storing a battery which has not been in use for a long period and turn ON/OFF switch off (OFF). Store the battery in a cool, dry place.
- During storage of the battery, charge it at least once every one month. If the battery is stored for a long period without being charged, its battery life may be shortened.
- The used battery must be recycled or disposed of separately from household waste.

The AUTO POWER On function can be set only when the unit is connected to an AC outlet. When the unit is being powered by the built-in battery only, the AUTO POWER On function is not available.

Declaration of Conformity



Hereby, LG Electronics declares that the radio equipment type HIGH POWER SPEAKER SYSTEM is in compliance with Directive 2014/53/EU. The full text of the EU declaration of conformity is available at the following internet address:

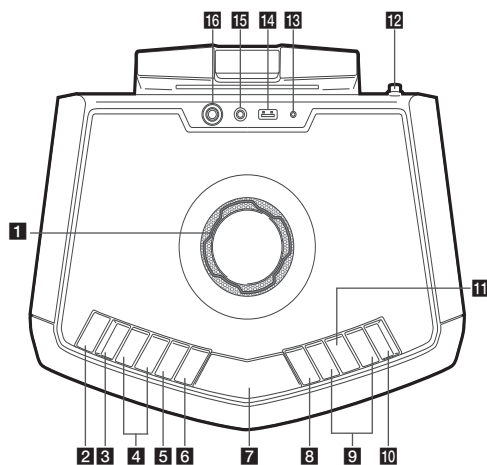
<http://www.lg.com/global/support/cedoc/cedoc#>

For consideration of the user, this device should be installed and operated with a minimum distance of 20 cm between the device and the body.

Frequency range	Output power (Max.)
2402 to 2480 MHz	10 dBm



Top Panel



1 MASTER VOLUME

Adjusts speaker or microphone volume.

2 O/I (Standby/On)

Switches the unit ON or OFF.

3 MIC (Microphone)

Press to select a microphone's volume control mode.

4 b/\# (KEY CHANGER)

Changes the key to suit your vocal range.

5 VOICE CANCELLER

You can enjoy the function while playing the music, by reducing singer vocal of music in the various source.

6 SOUND EFFECT/BASS BLAST

- Chooses sound impressions.
- Press and hold to select BASS effect directly.

7 Display window

8 F (Function)

Selects the function and input source.

9 I<</>>I

- Skips Fast backward or Forward. / Searches for a section within a file by pressing and holding.
- Selects the radio stations.

10 PRESET/REPEAT

- Chooses a preset number for a radio station. / Stores radio stations by pressing and holding.
- Listens to your files repeatedly or randomly.
- Sees the name of connected all Bluetooth device in Bluetooth mode.

11 >II

Starts or pauses playback.

12 FM antenna

13 CHARGING

Battery charging indicator

14 USB port

You can play sound files by connecting the USB device.

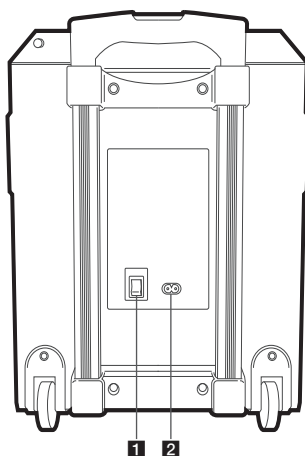
15 PORT.IN

Connects a portable device.

16 MIC (Microphone)

Connects a microphone.

Rear Panel



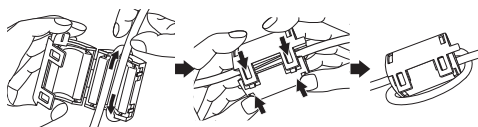
1 Power ON/OFF switch

Switches the unit ON or OFF.
(Battery can be charged even when this unit is in off (OFF) status.)

2 AC in socket

About Ferrite Core (Optional)

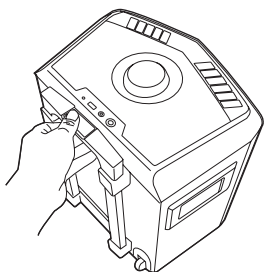
Wind the power cord around the ferrite core once.



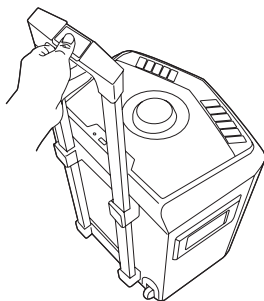
Carrying the unit

The unit has wheels and a handle so you can easily move the unit.

1. Press the lock button on the handle.



2. Pull the handle up.



3. Release the lock button to lock the handle in place.




Note

To retract the handle, press the button and push down.

Additional Information

Specifications

General

Power Requirements	Refer to the main label on the unit.
Power Consumption	Refer to the main label on the unit.
Dimensions (W x H x D)	Approx. 352.5 mm x 419.6 mm x 269.2 mm
Net Weight	Approx. 9.71 kg
Operating temperature	5 °C to 45 °C
Operating humidity	5 % to 60 %
Maximum operating altitude	2000 m
Bus Power Supply (USB)	5 V  500 mA
Amplifier (Total RMS output power)	50 W

Battery

Battery type	12 V/7.0 Ah (Valve Regulated Lead-Acid rechargeable battery)
Operating time	Approx. 15 hours (Based on fully charging the battery and continuous playback using 50 % volume level.) It may vary depending on the battery status and operational conditions.
Charging time	Approx. 9 hours It may vary depending on the battery status and operational conditions.

Design and specifications are subject to change without notice.









Российская Федерация

Импортер ООО "ЛГ Электроникс Рус"

Адрес импортера: 143160, Российская Федерация, Московская область, Рузский городской округ, территория
Минское шоссе, километр 86-й, дом 9

Адрес производителя : Шензен Фенда Технолоджи Ко, Лтд
Технологичный парк Фенда, Жоуши шоссе, Шиян, район Баоан, город Шензен,
Гаунгдонг, Китай

Сделано в Китае

Україна

Вироблено в : ШЕНЖЕН ФЕНДА ТЕХНОЛОДЖІ КО., ЛТД.
Фенда Хай-Тех Парк, Жоуші Род, Шиян Таун, Баоан Дістрікт, Шенджен Сіті, Гуангдонг, Китай

Қазақстан Республикасы

Импорттаушы АҚ "ЭЛ Джи Электроникс Алматы Қазақстан", 050061, Алматы қ., Көкорай көшесі, 2А/9

Өндірушінің мекенжайы: SHENZHEN FENDA TECHNOLOGY CO., LTD.

Фенда жоғары технологиялар паркі, Жоуши жолы, Шиян қаласы, Баоан ауданы,
Шензен қалашығы, Гуангдонг шет аймағы, Қытай

Қазақстан Республикасы территориясында тұтынушылардан келіп түскен талаптар мен ұсыныстарды
қарайтын және тауарды жөндеу мен техникалық қызмет көрсететін ұжым:

АҚ «Эл Джи Электроникс Алматы Қазақстан», 050061, Қазақстан Республикасы, Алматы қ., Көкорай көшесі,
2А/9. Басқа сервис орталықтары жайында мағлұматты "Тұтынушыға қызмет көрсету орталығына" телефон
шалу арқылы білуге болады.

Қытайда жасалған