



OWNER'S MANUAL

# BAG TYPE VACUUM CLEANER

This information contains important instructions for the safe use and maintenance of the vacuum cleaner. Especially, please read all of the information on page 3, 4, 5 for your safety. Please keep this manual in an easily accessible place and refer to it anytime.

VN-382\*H\*\*



MFL69458906

[www.lg.com](http://www.lg.com)

Copyright © 2018 LG Electronics Inc. All Rights Reserved.



# Table of contents

<b>Important safety instructions .....</b>	<b>3~5</b>
<b>How to use .....</b>	<b>6~12</b>
Assembling Cleaner .....	6~7
Operating vacuum cleaner .....	8
Using the Accessory Nozzles .....	9
Using carpet and floor nozzle .....	10
Changing the dust bag .....	11
Cleaning the Exhaust Filter .....	12
<b>What to Do if Your Vacuum Cleaner Does Not Work .....</b>	<b>13</b>
What to Do When Suction Performance Decreases .....	13

## IMPORTANT SAFETY INSTRUCTIONS

Read and follow all instructions before using your vacuum cleaner to prevent the risk of fire, electric shock, personal injury, or damage when using the vacuum cleaner. This guide do not cover all possible conditions that may occur. Always contact your service agent or manufacturer about problems that you do not understand.



This is the safety alert symbol.

This symbol alerts you to potential hazards that can kill or hurt you and others.

All safety messages will follow the safety alert symbol and either the word "WARNING" or "CAUTION."

These words mean:

### **WARNING**

This symbol will alert you to hazards or unsafe practices which could cause serious bodily harm or death.

### **CAUTION**

This symbol will alert you to hazards or unsafe practices which could cause bodily injury or property damage.

### **WARNING**

1. This appliance is not intended for use by persons (including children) with reduced physical, sensory or mental capabilities, or lack of experience and knowledge, unless they have been given supervision or instruction concerning use of the appliance by a person responsible for their safety.
2. Children should be supervised to ensure that they do not play with the appliance.
3. If the supply cord is damaged, it must be replaced by LG Electronics Service Agent in order to avoid a hazard
4. This appliance can be used by children aged from 8 years and above and persons with reduced physical, sensory or mental capabilities or lack of experience and knowledge if they have been given supervision or instruction concerning use of the appliance in a safe way and understand the hazards involved. Children shall not play with the appliance. Cleaning and user maintenance shall not be made by children without supervision.
5. **CAUTION:** This hose contains electrical connections
  - Do not use to suck up water.
  - Do not immerse in water for cleaning.
  - The hose should be checked regularly and must not be used if damaged.

## IMPORTANT SAFETY INSTRUCTIONS

### WARNING

- **Disconnect electrical supply before servicing or cleaning the unit or when cleaner is not in use.**  
Failure to do so could result in electrical shock or personal injury.
- **Do not vacuum liquid, blade, gesso, substances, or small particles like cement, burning or smoking such as cigarettes, or hot ashes in cleaning.**  
Doing so could result in death, fire or electrical shock.
- **Do not vacuum flammable or explosive substances such as gasoline, benzene, thinners, propane (liquids or gases).**  
The fumes from these substances can create a fire hazard or explosion. Doing so could result in death or personal injury.
- **Do not handle plug or vacuum cleaner with wet hands.**  
Doing so could result in death or electrical shock.
- **Do not unplug by pulling on cord.**  
Doing so could result in product damage or electrical shock. To unplug, grasp the plug, not the cord.
- **Keep hair, loose clothing, fingers, and all parts of the body away from openings and moving parts.**  
Failure to do so could result in electrical shock or personal injury.
- **Do not pull or carry by cord, use cord as a handle, close a door on cord, or pull cord around sharp edges or corners. Do not run vacuum cleaner over cord. Keep cord away from heated surfaces.**  
Failure to do so could result in electrical shock or personal injury or fire or product damage.
- **Do not allow to be used as toy. Close attention is necessary when used by or near children.**  
Personal injury or product damage could result.
- **Do not use the vacuum cleaner if the power cord or plug is damaged or faulty.**  
Personal injury or product damage could result. In these cases, contact LG Electronics Service Agent to avoid hazard.
- **Do not use vacuum cleaner if it has been under water.**  
Personal injury or product damage could result. In these cases, contact LG Electronics Service Agent to avoid hazard.
- **Do not continue to vacuum if any parts appear missing or damaged.**  
Personal injury or product damage could result. In these cases, contact LG Electronics Service Agent to avoid hazard.
- **Do not use an extension cord with this vacuum cleaner.**  
Fire hazard or product damage could result.
- **Using proper voltage.**  
Using improper voltage may result in damage to the motor and possible injury to the user. Proper voltage is listed on the bottom of vacuum cleaner.
- **Turn off all controls before unplugging.**  
Failure to do so could result in electrical shock or personal injury.
- **Do not change the plug in any way.**  
Failure to do so could result in electrical shock or personal injury or product damage. Doing so result in death. If plug does not fit, contact a qualified electrician to install the proper outlet. If the supply cord is damaged, it must be replaced by the manufacturer, its service agent or similarly qualified persons in order to avoid a hazard.
- **Repairs to electrical appliances may only be performed by qualified service engineers.**  
Improper repairs may lead to serious hazards for the user.
- **Do not plug in if control knob is not in OFF position.**  
Personal injury or product damage could result. (Depending on model)
- **Keep children away and beware of obstructions when rewinding the cord to prevent personal injury.**  
The cord moves rapidly when rewinding. (Depending on model)
- **The hose contains electrical wires. Do not use it if it is damaged, cut or punctured.**  
Failure to do so could result in death, or electrical shock. (Depending on model)

## IMPORTANT SAFETY INSTRUCTIONS

### CAUTION

- **Do not put any objects into openings.**  
Failure to do so could result in product damage.
- **Do not use with any opening blocked: keep free of dust, lint, hair, and anything that may reduce air flow.**  
Failure to do so could result in product damage.
- **Do not use vacuum cleaner without dust bag and/or filters in place.**  
Failure to do so could result in product damage.
- **Do not reuse a disposable dust bag(non-clip).**  
Failure to do so could result in product damage and cause bodily injury.
- **Do not use vacuum cleaner to pick up sharp hard objects, small toys, pins, paper clips, etc.**  
They may damage the cleaner or dust bin.
- **Store the vacuum cleaner indoors.**  
Put the vacuum cleaner away after use to prevent tripping over it.
- **The vacuum cleaner is not intended to use by young children or infirm people without supervision.**  
Failure to do so could result in personal injury or product damage.
- **Only use parts produced or recommended by LG Electronics Service Agents.**  
Failure to do so could result in product damage.
- **Use only as described in this manual. Use only with LG recommended or approved attachments and accessories.**  
Failure to do so could result in personal injury or product damage.
- **To avoid personal injury and to prevent the machine from falling when cleaning stairs, always place it at the bottom of stairs.**  
Failure to do so could result in personal injury or product damage.
- **Use accessory nozzles in sofa mode.**  
Failure to do so could result in product damage.
- **Make sure the filters (exhaust filter and motor safety filter) are completely dry before replacing in the machine.**  
Failure to do so could result in product damage.
- **Do not dry the filter in an oven or microwave.**  
Failure to do so could result in fire hazard.
- **Do not dry the filter in a clothes dryer.**  
Failure to do so could result in fire hazard.
- **Do not dry near an open flame.**  
Failure to do so could result in fire hazard.
- **Always clean the dust bin after vacuuming carpet cleaners or fresheners, powders and fine dust.**  
These products clog the filters, reduce airflow and can cause damage to the cleaner. Failure to clean the dust bin could cause permanent damage to the cleaner. (Depending on model)
- **You should grasp the carrier handle when you are moving the vacuum cleaner. (Depending on model)**
- **If after changing or emptying the dust bag the indicator light is on(red), clean the the filters.**  
Failure to do so could result in product damage.
- **Don't use for vacuum-cleaning persons or animals.**  
This could cause bodily injury.
- **If the power cord is damaged, it must be replaced by an approved LG Electronics Service Agent to avoid a hazard.**
- **This appliance is not intended for use by persons (including children) with reduced physical, sensory or mental capabilities, or lack of experience and knowledge, unless they have been given supervision or instruction concerning use of the appliance by a person responsible for their safety.**  
Children should be supervised to ensure that they do not play with the appliance.

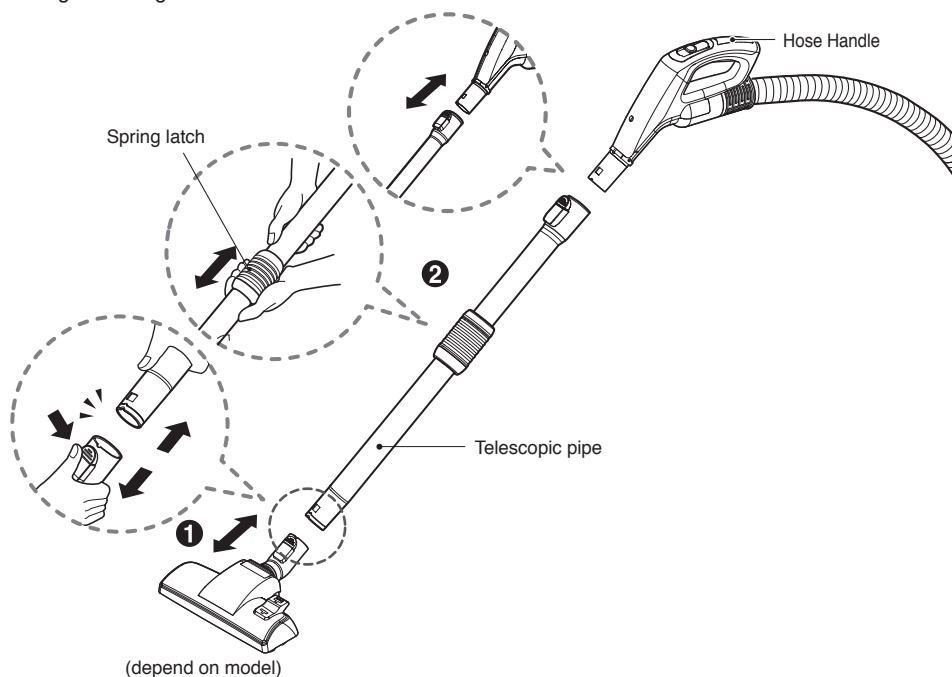
### CAUTION

#### **Thermal protector :**

This vacuum cleaner has a special thermostat that protects the vacuum cleaner in case of motor overheating. If the vacuum cleaner suddenly shuts off, turn off the switch and unplug the vacuum cleaner. Check the vacuum cleaner for possible source of overheating such as a full dust tank, a blocked hose or clogged filter. If these conditions are found, fix them and wait at least 30 minutes before attempting to use the vacuum cleaner. After the 30 minute period, plug the vacuum cleaner back in and turn on the switch. If the vacuum cleaner still does not run, contact a qualified electrician.

# How to use Assembling Cleaner

Fit the large cleaning head onto the end of the tube.

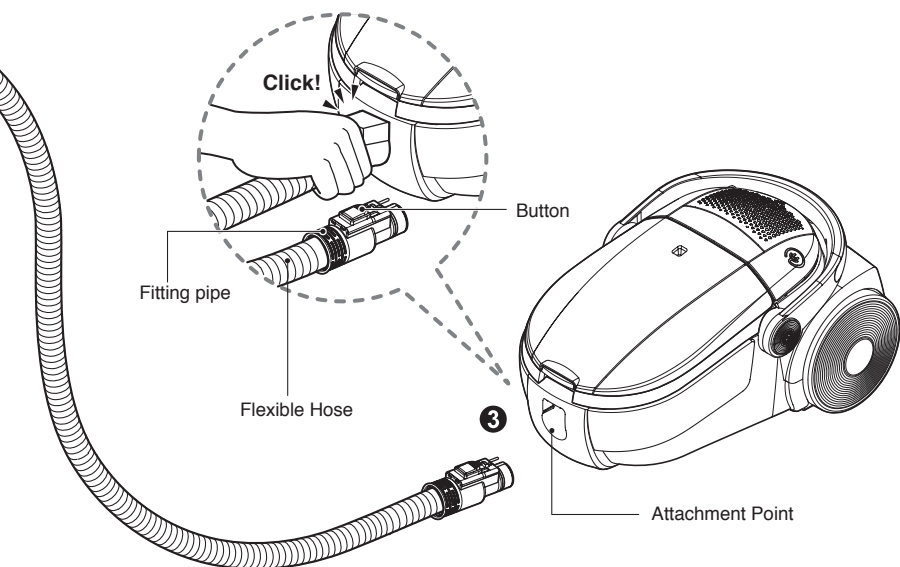


## ① Carpet and floor nozzle

Push the nozzle into the telescopic pipe.

## ② Telescopic pipe

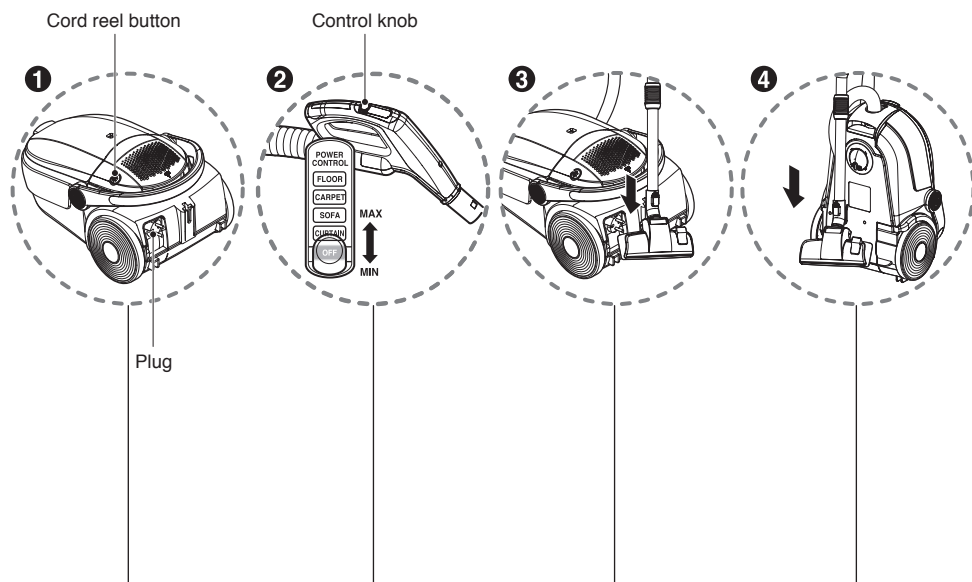
- Push telescopic pipe firmly into hose handle.
- Grasp the spring latch to expand.
- Pull out the pipe to desired length.



### ③ Connecting the flexible hose

- Push the end of the head on the flexible hose into the attachment point on the vacuum cleaner.
- To remove the flexible hose from the vacuum cleaner, press on the button situated on the head, then pull the head out of the vacuum cleaner.

# How to use Operating vacuum cleaner



## 1 How to Plug in and Use

- Pull out the power cord to the desired length and plug into the socket.
- Press the cord reel button to retract the power cord after use.

## 2 How to operate

- Place the control knob of the hose handle to the required position.
- To turn off, slide control knob to OFF position.

## 3 Park System

- To store after vacuuming and pause while vacuuming.
- For deposit after vacuuming, for example to move a small piece of furniture or a rug, use the Park system to support the flexible hose and cleaning head.
  - Slide the hook on the large cleaning head into the slot on the rear of the body cover.

## 4 Storage

- Switch off, unplug the appliance and rewind the cord by pressing the button when you store.
- You can store your appliance in a vertical position by sliding the hook on the large cleaning head into the clip on the underside of the appliance.

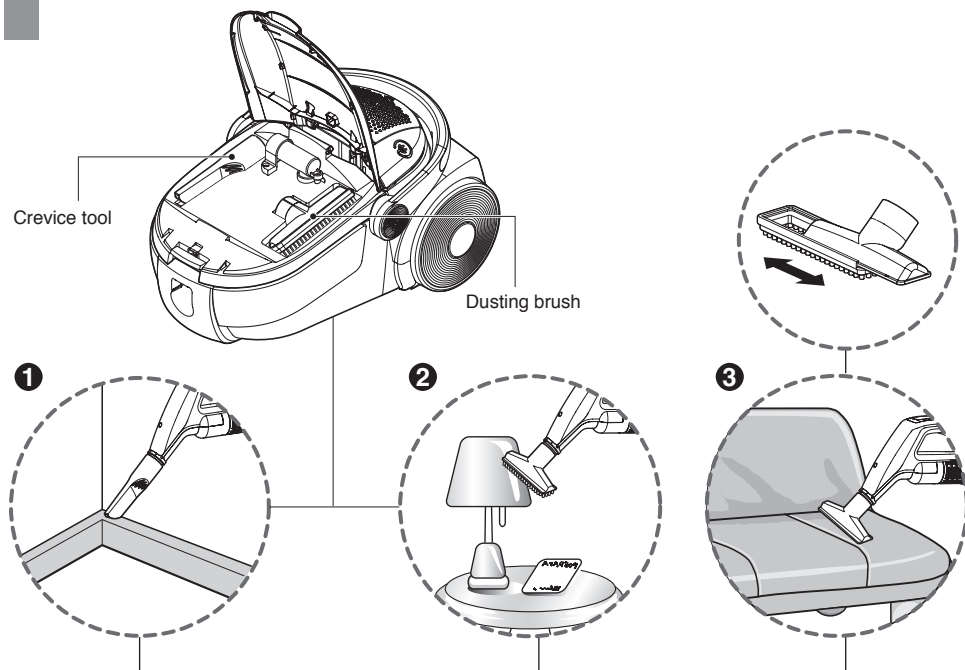


### WARNING

No liquid suction.  
Liquid suction can cause defects.



## How to use Using the Accessory Nozzles



### 1 Crevice Tool

Crevice Tool is for vacuuming in those normally hard-to-reach places such as reaching cobwebs, or between the cushions of a sofa.

### 2 Dusting Brush

Dusting Brush is for vacuuming picture frames, furniture frames, books and other irregular surfaces.

### 3 Upholstery nozzle

Upholstery nozzle is for vacuuming upholstery, mattresses etc. The thread collectors help to pick up the threads and fluff.

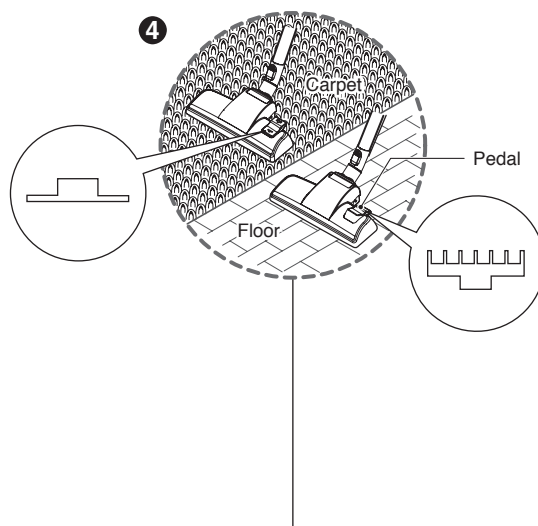
**Note :** If you want to use the Accessory Nozzles, Connect the Hose Handle only.

## NOTICE

Use accessory in the sofa mode.



## How to use Using carpet and floor nozzle




### ④ Carpet and floor nozzle (depend on model)


- **The 2 position nozzle**

This is equipped with a pedal which allows you to alter its position according to the type of floor to be cleaned.

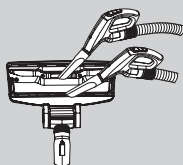
- **Carpet or rug position**

Press the pedal (  ) to lower brush.

- **Hard floor position** (tiles, parquets floor)

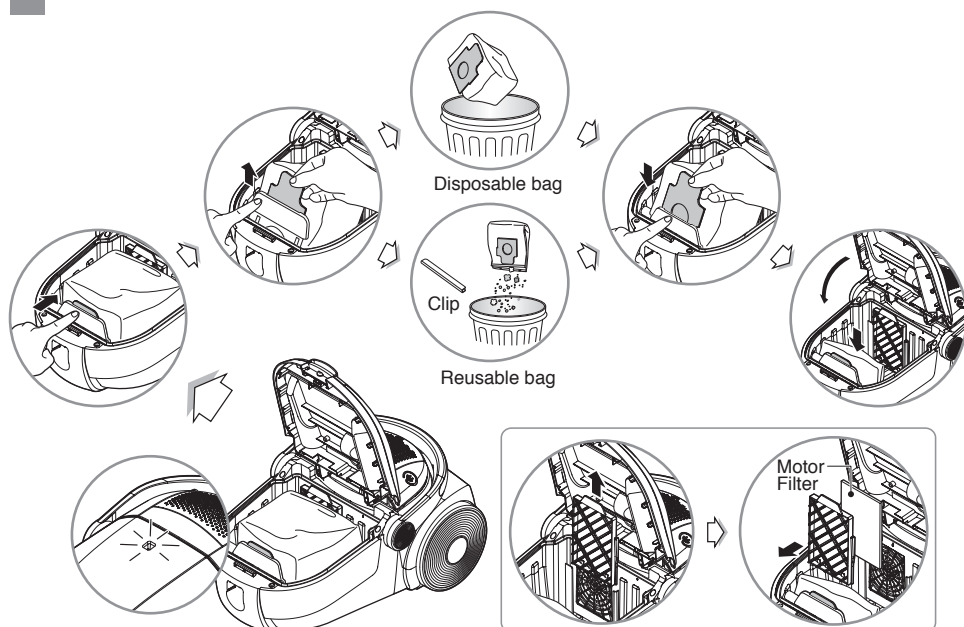
Press the pedal (  ) to lift the brush up.

- **Cleaning carpet and floor nozzle**



- Clean the hole and brush of nozzle.

## How to use Changing the dust bag



The dust bag needs changing or emptying when the cleaner is set to maximum power and the cleaner head is off the floor but the indicator window is completely coloured red. Even if the dust bag does not appear to be full at this stage, it should be changed or emptied. It could be that a great deal of very fine dust has clogged up the pores of the dust bag.

- Turn off the appliance and unplug it.
- Lift up the button and open the cover.
- Your appliance is equipped with either a disposable dust bag or a reusable dust bag.
- Push the dust bag holder to backward and remove the dust bag.
- If your appliance is fitted with a disposable dust bag, insert the new dust bag.
- If your appliance is fitted with a reusable dust bag, follow the above instructions.

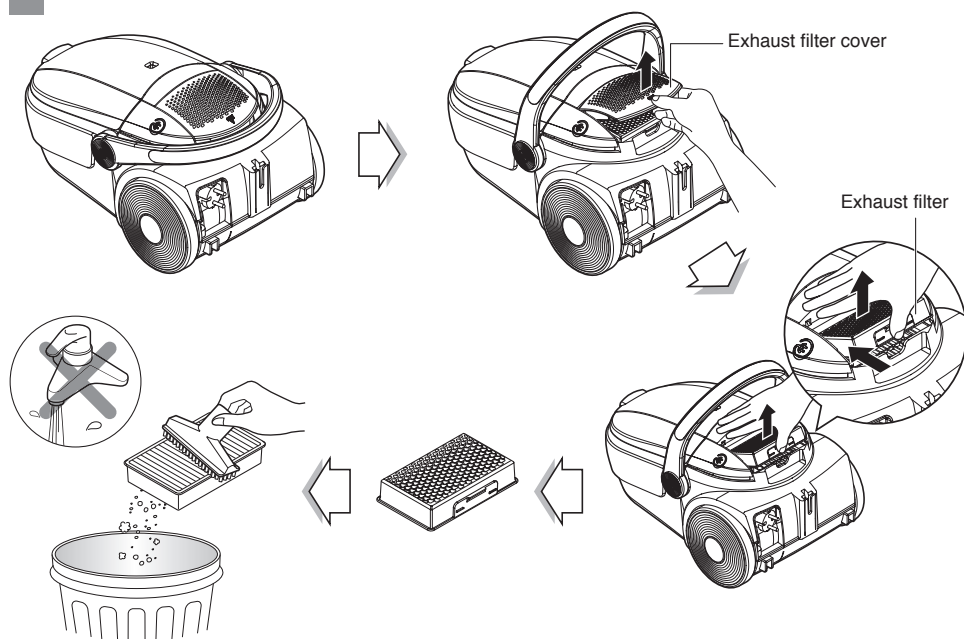
Open zipper and empty dirt.

Wash the cloth bag and dry it for a day in a shade. Then replace it.

**Note :** as the appliance is fitted with a safety device which checks that the dust bag is in place you cannot close the lid if the dust bag is not fitted correctly.

The motor filter is situated inside the appliance between the dust bag and the motor. Each time that you change the air outlet filter we advise you to remove the motor filter and to clean it by tapping to remove the dirt and then replacing it in the vacuum cleaner.

## How to use Cleaning the Exhaust Filter



- The exhaust filter is reusable.
- To clean the exhaust filter, remove the exhaust filter cover on the body by pulling it out.
- Separate the exhaust filter.
- Dust off filter. (Do not wash filter with water.)
- The exhaust filter should be cleaned at least once a year.

## **What to Do if Your Vacuum Cleaner Does Not Work?**

Check that the vacuum is plugged in correctly and that the electrical socket is working.

## **What to Do When Suction Performance Decreases?**

- Turn off the vacuum cleaner and unplug it.
- Check the telescopic tube, flexible hose and cleaning tool for blockages or obstructions.
- Check that the dust bag is not full. Change if necessary.
- Check that the exhaust filter is not blocked. Clean the exhaust filter, if necessary.

# Note



# Note



