



SIMPLE MANUAL

DVD Home Cinema System

To view the instructions of advanced features,
visit <http://www.lg.com> and then download Owner's Manual.
Some of the content in this manual may differ from your unit.

MODEL
LHD427

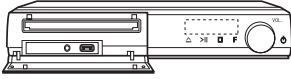


www.lg.com

Copyright © 2017 LG Electronics. All Rights Reserved

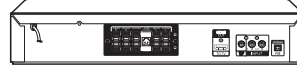


Front Panel



- PORT. IN** Connect to a Portable device.
- USB Port**..... Connect a USB device.
- △** Disc Tray Open / Close
- >||** Starts / Pauses playback.
- Stops playback.
- F** Changes the input source or function.
- VOL.** Adjusts volume.
- ⏻** Power On / Off

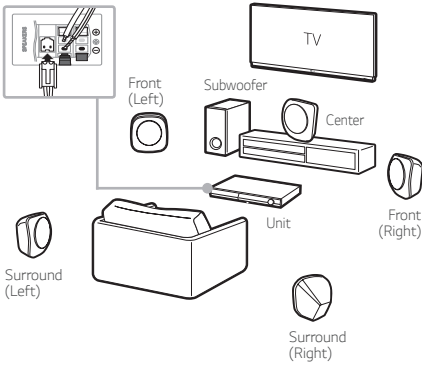
Rear Panel



- SPEAKERS** Connect to speakers.
- HDMI OUT TO TV**..... Connect to TV.
- VIDEO OUT** Connect to TV.
- AUX (L/R) INPUT**..... Connect to analogue device.
- ANTENNA FM** Connect to radio antenna.

1 Speaker Connection

! Speaker design and connection method may be different according to models.

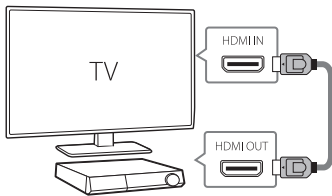


2

TV Connection

HDMI Connection

- 1 Connect the unit to the TV using HDMI cable.
- 2 Set the input selector to HDMI on the TV.
- 3 Follow the instructions on the TV screen using remote control.



3

Home Menu


Home menu appears on the TV screen. Enjoy various functions on the unit.



For more information, download the online owner's manual. <http://www.lg.com>

Additional Information

Specification

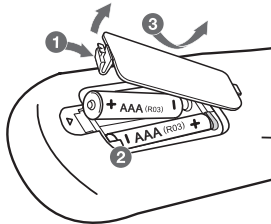
Power requirements	Refer to main label.
Power consumption	Refer to main label.
	Networked standby : 0.5 W (If all network ports are activated.)
Dimensions (W x H x D)	Approx. 360 mm x 58 mm x 293 mm
Net Weight	Approx. 2.3 kg
Bus Power Supply (USB)	5 V  500 mA
Amplifier (Total RMS output power)	330 W RMS

Design and specifications are subject to change without notice.

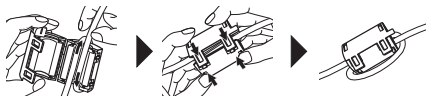
How to disconnect the wireless network connection or the wireless device

Turn off the unit by pressing the power button for more than 5 seconds.

Replacement of battery



About Ferrite Core (Optional)



Wind HDMI cable around the ferrite core.

Declaration of Conformity



Hereby, LG Electronics declares that the radio equipment type DVD HOME CINEMA is in compliance with Directive 2014/53/EU. The full text of the EU declaration of conformity is available at the following internet address:

<http://www.lg.com/global/support/cedoc/cedoc#>

For consideration of the user, this device should be installed and operated with a minimum distance of 20 cm between the device and the body.

Frequency range	Output power (Max.)
2402 to 2480 MHz	10 dBm