

Owner's Manual **LED MONITOR** **(LED MONITOR*)**

*LG LED Monitors are LCD Monitors with LED Backlighting.

Please read this manual carefully before operating your set and retain it for future reference.

LED MONITOR MODEL

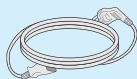
17MB15P

!!! Thank for selecting LGE products !!!

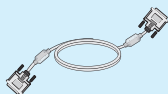
- Please make sure the following items are included with your monitor. If any items are missing, contact your dealer.



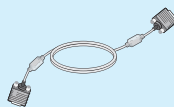
User's Guide/Cards



Power Cord



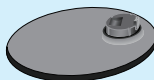
DVI-D Signal Cable
(This feature is not available in all countries.)



15-pin D-Sub Signal Cable
(To set it up, this signal cable may be attached to this product before shipping out.)



Cable Holder



Stand Base

NOTE

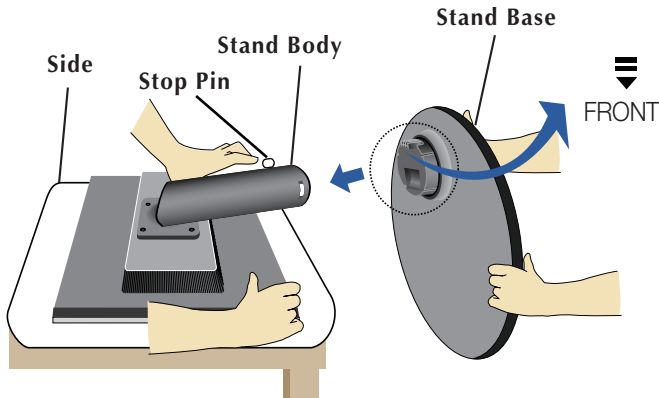
- This accessories may look different from those shown here.
- User must use shielded signal interface cables (D-sub 15 pin cable, DVI-D cable) with ferrite cores to maintain standard compliance for the product.

Connecting the Display

- Before setting up the monitor, ensure that the power to the monitor, the computer system, and other attached devices is turned off.

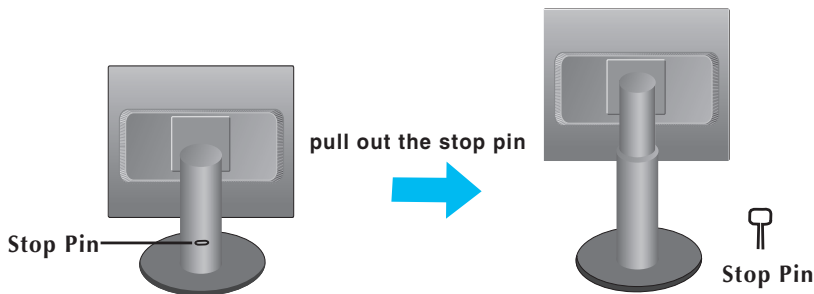
Connecting the stand

1. Place the monitor with its front facing downward on a cushion or soft cloth.
2. Assemble the Stand Base into the Stand Body.
Be sure don't pull out the Stop Pin and make the Stand Base direction as shown.



3. Make the monitor stand, then pull out the Stop Pin.

WARNING : The tape and locking pin may only be removed from those monitors equipped with a standing base when the base is pulled up. Otherwise, you may be injured by the protruding sections of the stand.



Important

- This illustration depicts the general model of connection. Your monitor may differ from the items shown in the picture.
- Do not carry the product upside down holding only the stand base. The product may fall and get damaged or injure your foot.

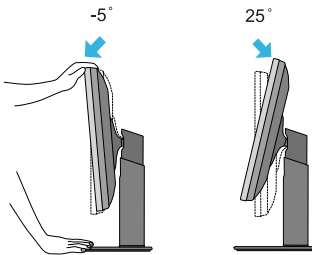
Connecting the Display

- Before setting up the monitor, ensure that the power to the monitor, the computer system, and other attached devices is turned off.

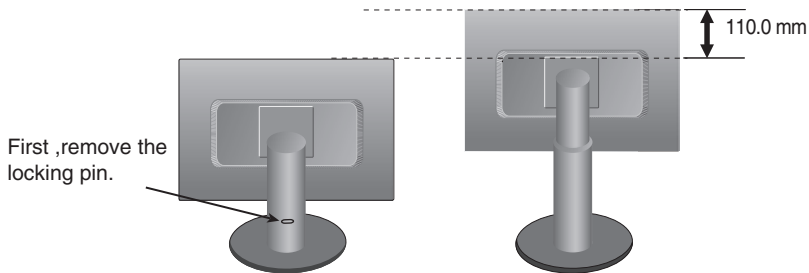
Positioning your display

1. Adjust the position of the panel in various ways for maximum comfort.

- **Tilt Range** : -5° to 25°



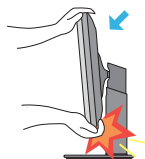
- **Height Range** : maximum 4.33 inches (110.0 mm)



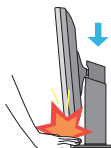
Ergonomic

It is recommended that in order to maintain an ergonomic and comfortable viewing position, the forward tilt angle of the monitor should not exceed 5 degrees.

Connecting the Display



- When adjusting the angle of the screen, do not put your finger(s) in between the head of the monitor and the stand body. You can hurt your finger(s).



- When adjusting the height of the screen, do not put your finger(s) in between the head of the monitor and the stand base. You can hurt your finger(s).

WARNING

- You do not need to replace the Locking pin after it is removed, to adjust its height.

ERGONOMIC

- It is recommended that in order to maintain an ergonomic and comfortable viewing position, the forward tilt angle of the monitor should not exceed 5 degrees.

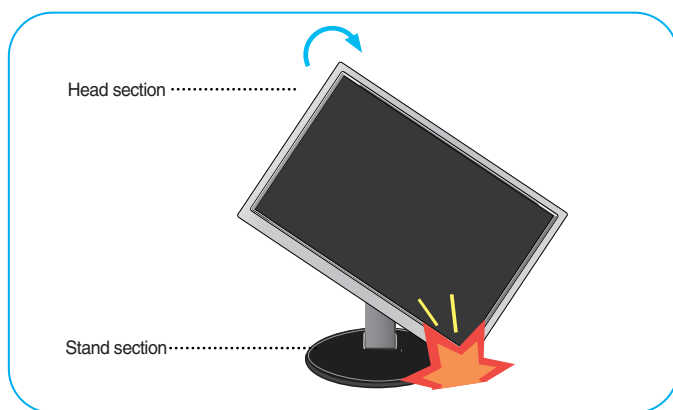
Using the Pivot function

-The pivot function allows you to rotate the screen 90 degrees clockwise.

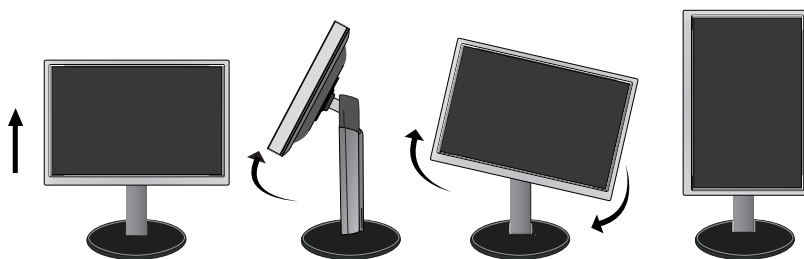
1. Lift the monitor to its highest height to utilize the Pivot function.

2. Landscape & Portrait : You can rotate the panel 90° clockwise.

Please be cautious and avoid contact between the monitor head and the Stand Base when rotating the screen to access the Pivot function. If the monitor head touches the Stand Base, then the Stand Base could crack.



3. Be careful with the cables when rotating the screen.

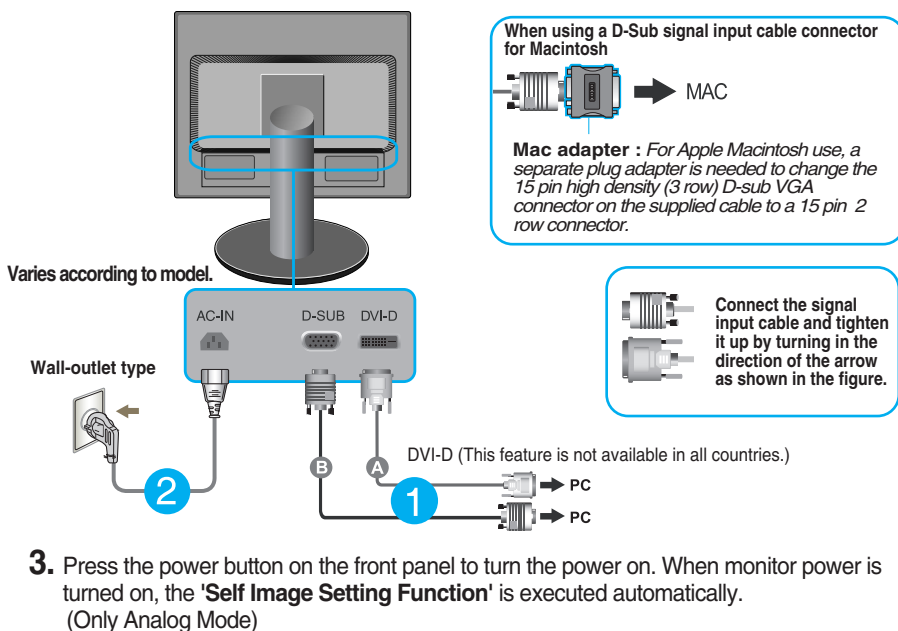


Connecting with the PC

1. Before setting up the monitor, ensure that the power to the monitor, the computer system, and other attached devices is turned off.
2. Connect signal input cable **1** and power cord **2** in order, then tighten the screw of the signal cable.
 - A Connect DVI-D(Digital signal) Cable
 - B Connect D-sub(Analog signal) Cable

NOTE

- This is a simplified representation of the rear view.
- This rear view represents a general model; your display may differ from the view as shown.



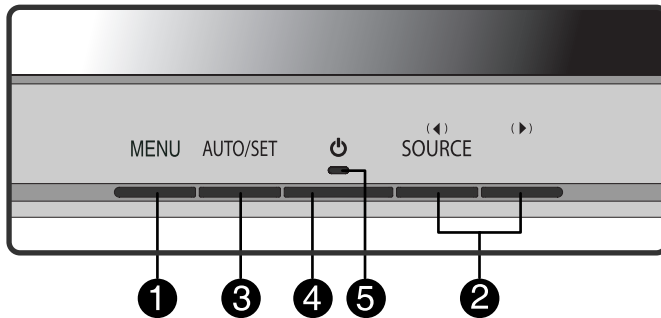
PROCESSING SELF
IMAGE SETTING

NOTE

'Self Image Setting Function'? This function provides the user with optimal display settings. When the user connects the monitor for the first time, this function automatically adjusts the display to optimal settings for individual input signals.

'AUTO' Function? When you encounter problems such as blurry screen, blurred letters, screen flicker or tilted screen while using the device or after changing screen resolution, press the AUTO function button to improve resolution.

Front Panel Controls



1 MENU Button

OSD LOCKED/UNLOCKED

This function allows you to lock the current control settings, so that they cannot be inadvertently changed. Press and hold the **MENU button** for several seconds. The message "OSD LOCKED" should appear.

OSD LOCKED

OSD UNLOCKED

You can unlock the OSD controls at any time by pushing the **MENU button** for several seconds. The message "OSD UNLOCKED" should appear.

2 ◀ ▶ Buttons

Use this button to select or adjust functions in the On Screen Display.



SOURCE

Use this button to make D-Sub or DVI connector active. This feature is used when two computers are connected to the display. The default setting is D-Sub.

3 AUTO/SET Button

Use this button to select an icon in the On Screen Display.



AUTO IMAGE ADJUSTMENT

When adjusting your display settings, always press the **AUTO/SET** button prior to entering the On Screen Display(OSD). This will automatically adjust your display image to the ideal settings for the current screen resolution size (display mode).

The best display mode is

17 inch:1280 x 1024

4 Power Button

Use this button to turn the display on or off.

5 Power Indicator

The indicator lights up as blue when the display is operating normally (On Mode). If the display is in Sleep Mode (Energy Saving), this indicator changes to flicker.

Screen Adjustment

Making adjustments to the image size, position and operating parameters of the display is quick and easy with the On Screen Display Control system.

A short example is given below to familiarize you with the use of the controls. The following section is an outline of the available adjustments and selections you can make using the OSD.

NOTE

- Allow the display to stabilize for at least 30 minutes before making image adjustments.

To make adjustments in the On Screen Display, follow these steps:

MENU → ◀ ▶ → AUTO/SET → ◀ ▶ → MENU

- 1 Press the **MENU Button**, then the main menu of the OSD appears.
- 2 To access a control, use the ◀ or ▶ **Buttons**. When the icon you want becomes highlighted, press the **AUTO/SET Button**.
- 3 Use the ◀ / ▶ **Buttons** to adjust the image to the desired level.
Use the **AUTO/SET Button** to select other sub-menu items.
- 4 Push the **MENU Button** once to return to the main menu to select another function. Push the **MENU Button** twice to exit from the OSD.

On Screen Display(OSD) Selection and Adjustment

The following table indicates all the On Screen Display control, adjustment, and setting menus.

DSUB : D-SUB(Analog signal) input

DVI-D : DVI-D(Digital signal) input

Main menu	Sub-menu	Supported input	Description
PICTURE	BRIGHTNESS	DSUB	To adjust the brightness, contrast and sharpness of the screen
	CONTRAST	DVI-D	
	SHARPNESS		
COLOR	COLOR TEMP (PRESET / USER)	DSUB	To customize the color of the screen
	GAMMA	DVI-D	
DISPLAY	HORIZONTAL VERTICAL	DSUB	To adjust the position of the screen
	CLOCK PHASE	DSUB	To improve the clarity and stability of the screen
OTHERS	LANGUAGE	DSUB	To customize the screen status for a user's operating environment
	POWER INDICATOR	DVI-D	
	WHITE BALANCE	DSUB	
	SUPER ENERGY SAVING	DSUB	
	FACTORY RESET	DVI-D	

NOTE

- The order of icons may differ depending on the model (10~14).

On Screen Display(OSD) Selection and Adjustment

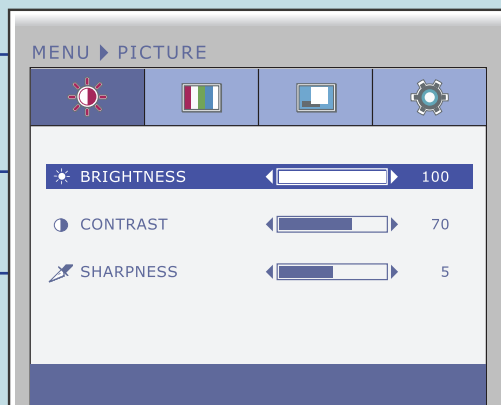
- ■ ■ You were introduced to the procedure of selecting and adjusting an item using the OSD system. Listed below are the icons, icon names, and icon descriptions of the all items shown on the Menu.

Press the **MENU** Button, then the main menu of the OSD appears.

Menu Name

Icons



Sub-
menus





- **MENU** : Exit
- ◀ : Decrease
- ▶ : Increase
- **SET** : Select another sub-menu

NOTE

- OSD (On Screen Display) menu languages on the monitor may differ from the manual.

Main menu	Sub menu	Description
	PICTURE	
	BRIGHTNESS	To adjust the brightness of the screen.
	CONTRAST	To adjust the contrast of the screen.
	SHARPNESS	To adjust the clearness of the screen.
<ul style="list-style-type: none">■ MENU : Exit■ ◀ : Decrease■ ▶ : Increase■ SET : Select another sub-menu		

	COLOR	
	COLOR TEMP	
	PRESET	Select the screen color. <ul style="list-style-type: none">• sRGB: Set the screen color to fit the sRGB standard color specification.• WARM: Set the screen to warm color temperature .• MEDIUM: Set the screen to medium color temperature.• COOL: Set the screen to cool color temperature.
<ul style="list-style-type: none">■ MENU : Exit■ ◀ : Decrease■ ▶ : Increase■ SET : Select another sub-menu		

USER

-  **RED**
Set your own red color levels.
-  **GREEN**
Set your own green color levels.
-  **BLUE**
Set your own blue color levels.

GAMMA Set your own gamma value. : 0 / 1 / 2
On the monitor, high gamma values display whitish images and low gamma values display blackish images.

Main menu	Sub menu	Description
-----------	----------	-------------



DISPLAY




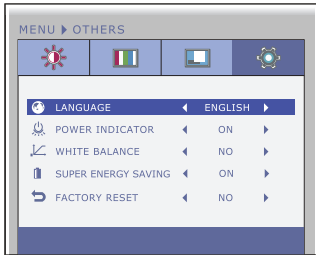
HORIZONTAL To move image left and right.

VERTICAL To move image up and down.

- **MENU** : Exit
- ◀ : Decrease
- ▶ : Increase
- **SET** : Select another sub-menu

CLOCK To minimize any vertical bars or stripes visible on the screen background.
The horizontal screen size will also change.

PHASE To adjust the focus of the display.
This item allows you to remove any horizontal noise and clear or sharpen the image of characters.

Main menu	Sub menu	Description
	OTHERS	
	LANGUAGE	To choose the language in which the control names are displayed.
	POWER INDICATOR	Use this function to set the power indicator on the front side of the monitor to ON or OFF . If you set OFF , it will go off. If you set ON at any time, the power indicator will automatically be turned on.
<ul style="list-style-type: none">■ MENU : Exit■ ◀ : Decrease■ ▶ : Increase■ SET : Select another sub-menu	WHITE BALANCE	If the output of the video card is different the required specifications, the color level may deteriorate due to video signal distortion. Using this function, the signal level is adjusted to fit into the standard output level of the video card in order to provide the optimal image. Activate this function when white and black colors are present in the screen.
	SUPER ENERGY SAVING	When SUPER ENERGY SAVING function is ON , power can be saved about 25%. LG calculated these values by using "broadcast video signal".
	FACTORY RESET	Restore all factory default settings except " LANGUAGE ." Press the ◀, ▶ buttons to reset immediately.

NOTE

- If this does not improve the screen image, restore the factory default settings. If necessary, execute the **WHITE BALANCE** function again. This function will be enabled only when the input signal is an analog signal.

Check the following before calling for service.

No image appears	
<ul style="list-style-type: none">● Is the power cord of the display connected?	<ul style="list-style-type: none">• Check and see if the power cord is connected properly to the power outlet.
<ul style="list-style-type: none">● Is the power indicator light on?	<ul style="list-style-type: none">• Press the Power button.
<ul style="list-style-type: none">● Is the power indicator flickering?	<ul style="list-style-type: none">• If the display is in power saving mode, try moving the mouse or pressing any key on the keyboard to bring up the screen.• Try to turn on the PC.
<ul style="list-style-type: none">● Do you see an "OUT OF RANGE" message on the screen?	<ul style="list-style-type: none">• This message appears when the signal from the PC (video card) is out of horizontal or vertical frequency range of the display. See the 'Specifications' section of this manual and configure your display again.
<ul style="list-style-type: none">● Do you see a "CHECK SIGNAL CABLE" message on the screen?	<ul style="list-style-type: none">• This message appears when the signal cable between your PC and your display is not connected. Check the signal cable and try again.

Do you see a "OSD LOCKED" message on the screen?	
<ul style="list-style-type: none">● Do you see "OSD LOCKED" when you push MENU button?	<ul style="list-style-type: none">• You can secure the current control settings, so that they cannot be inadvertently changed. You can unlock the OSD controls at any time by pushing the MENU button for several seconds: the message "OSD UNLOCKED" will appear.

Display image is incorrect

- | | |
|---|--|
| <ul style="list-style-type: none">● Display Position is incorrect. | <ul style="list-style-type: none">• Press the AUTO button to automatically adjust your display image to the ideal setting. If the results are unsatisfactory, adjust the image position using the H position and V position icon in the on screen display. |
| <ul style="list-style-type: none">● On the screen background, vertical bars or stripes are visible. | <ul style="list-style-type: none">• Press the AUTO button to automatically adjust your display image to the ideal setting. If the results are unsatisfactory, decrease the vertical bars or stripes using the CLOCK icon in the on screen display. |
| <ul style="list-style-type: none">● Any horizontal noise appearing in any image or characters are not clearly portrayed. | <ul style="list-style-type: none">• Press the AUTO button to automatically adjust your display image to the ideal setting. If the results are unsatisfactory, decrease the horizontal bars using the PHASE icon in the on screen display.• Check Control Panel --> Display --> Settings and adjust the display to the recommended resolution or adjust the display image to the ideal setting. Set the color setting higher than 24 bits (true color). |

IMPORTANT

- Check **Control Panel --> Display --> Settings** and see if the frequency or the resolution were changed. If yes, readjust the video card to the recommend resolution.
- If the recommended resolution (optimal resolution) is not selected, letters may be blurred and the screen may be dimmed, truncated or biased. Make sure to select the recommend resolution.
- The setting method can differ by computer and O/S (Operation System), and resolution mentioned above may not be supported by the video card performance. In this case, please ask to the computer or the video card manufacturer.

Display image is incorrect

- | | |
|--|---|
| <ul style="list-style-type: none">● The screen color is mono or abnormal. | <ul style="list-style-type: none">• Check if the signal cable is properly connected and use a screwdriver to fasten if necessary.• Make sure the video card is properly inserted in the slot.• Set the color setting higher than 24 bits (true color) at Control Panel - Settings. |
| <ul style="list-style-type: none">● The screen blinks. | <ul style="list-style-type: none">• Check if the screen is set to interlace mode and if yes, change it to the recommend resolution. |

Do you see an "Unrecognized monitor, Plug&Play (VESA DDC) monitor found" message?

- | | |
|---|---|
| <ul style="list-style-type: none">● Have you installed the display driver? | <ul style="list-style-type: none">• Be sure to install the display driver from the display driver CD (or diskette) that comes with your display. Or, you can also download the driver from our web site: http://www.lg.com.• Make sure to check if the video card supports Plug&Play function. |
|---|---|

Display	17 inch (43.2 cm) Flat Panel Active matrix-TFT LCD Anti-Glare coating Visible diagonal size : 43.2 cm 0.264 mm Pixel pitch		
Sync Input	Horizontal Freq.	Analog : 30 - 83 kHz (Automatic) Digital : 30 - 83 kHz (Automatic)	
	Vertical Freq.	56 - 75 Hz (Automatic)	
	Input Form	Separate TTL,Positive/Negative SOG (Sync On Green) Digital	
Video Input	Signal Input	15 pin D-Sub Connector DVI-D Connector (Digital)	
	Input Form	RGB Analog (0.7 Vp-p/ 75 ohm), Digital	
Resolution	Max	Analog : VESA 1280 x 1024 @75 Hz Digital : VESA 1280 x 1024 @75 Hz	
	Recommend	VESA 1280 x 1024 @60 Hz	
Plug&Play	DDC 2B (Digital), DDC 2AB (Analog)		
Power Consumption	On Mode	:	13.1 W Typ. (Outgoing condition) *
	Sleep Mode	≤	0.5 W **
	Off Mode	≤	0.5 W
Dimensions & Weight		With Stand	Without Stand
	Width	37.0 cm	37.0 cm
	Height	40.8 cm	31.5 cm
	Depth	24.2 cm	6.2 cm
	Net	3.4 kg	
Tilt Range	Tilt	-5° to 25°	
Power Input	AC 100-240 V~ 50 / 60 Hz 0.8 A		
Environmental Conditions	Operating Conditions		
	Temperature	10 °C to 35 °C	
	Humidity	10 % to 80 % non-Condensing	
	Storage Conditions		
	Temperature	-20 °C to 60 °C	
	Humidity	5 % to 90 % non-Condensing	
Stand Base	Attached (), Detached (O)		
Signal Base	Attached (), Detached (O)		
Power cord	Wall-outlet type or PC-outlet type		

Product specifications shown above may be changed without prior notice due to upgrade of product functions.

* The power consumption level can be different by operating condition and monitor setting.

* The On mode power consumption is measured with LGE test standard (Full White pattern , Maximum resolution)

** The monitor goes to the Sleep Mode in a couple of minutes (Max 5 minutes).

Preset Modes (Resolution)

Display Modes (Resolution)		Horizontal Freq. (kHz)	Vertical Freq. (Hz)
1	720 x 400	31.468	70
2	640 x 480	31.469	60
3	640 x 480	37.500	75
4	800 x 600	37.879	60
5	800 x 600	46.875	75
6	1024 x 768	48.363	60
7	1024 x 768	60.123	75
8	1152 x 870	68.681	75
*9	1280 x 1024	63.981	60
10	1280 x 1024	79.976	75

*Recommend Mode

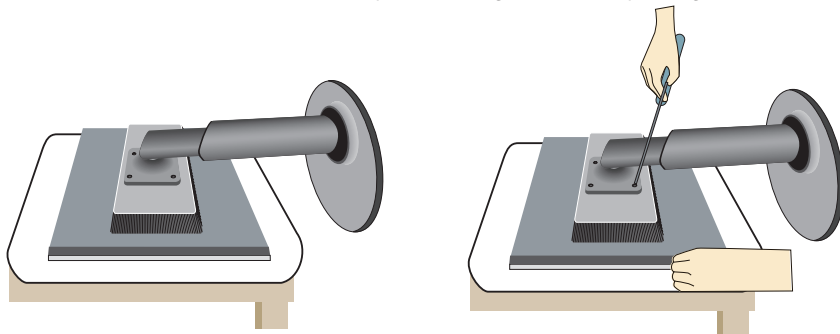
Indicator

MODE	LED Color
On Mode	Blue
Sleep Mode	Flicker
Off Mode	Off

Installing the Wall mount plate

This monitor satisfies the specifications of the Wall mount plate or the interchange device.

1. Place the monitor with its front facing downward on a soft cloth.
2. Separate the the stand after firstly separating 4 screws by using a driver as figure.



3. Install the Wall mount plate.

Wall mount plate(Separate purchase)

This is stand-type or wall mount type and is connectable with Wall mount plate.

Please refer to the installation guide for more details, which is provided when Wall mount plate is purchased.

-Be sure to use screws and a wall mount that meet VESA standards.

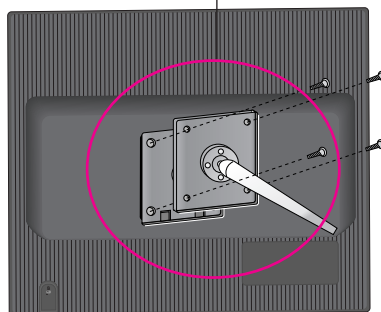
-Using screws longer than those recommended might damage the product or result in it coming away from the wall. We will not be held responsible for any damage resulting from failure to follow these instructions.

<Please use VESA standard as a recommendation.>

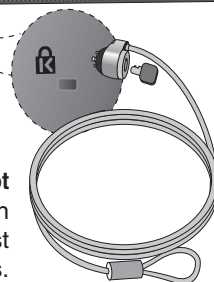
Mounting crew

Interface pad thickness: 2.6 mm

Screw : \varnothing 4 mm x pitch 0.7 mm x length 10 mm



Kensington Security Slot
Connected to a locking cable that can be purchased separately at most computer stores.





Make sure to read the Safety Precautions before using the product.
Keep the Owner's Manual (CD) in an accessible place for future reference.
The model and serial number of the SET is located on the back and one side of the SET.
Record it below should you ever need service.

MODEL _____

SERIAL _____