

## ENGLISH

### Specification


#### Power requirements

- Refer to the main label.
- Built-in rechargeable battery

#### Power consumption

- Refer to the main label.

Dimensions (W x H x D): Approx. 289 mm x 570 mm x 280 mm

Bus Power Supply (USB): 5 V  500 mA

Amplifier (Total RMS Output power): 200 W RMS

Operating Temperature: 5 °C - 35 °C

Operating Humidity: 5 % - 80 % RH

Ingress Protection: IPX4

- Liquid: Protected against splashing water.

Battery Life: Approx. 12 hours

- Operation time may vary depending on the battery or operation status.
- This unit contains magnets which can be harmful to some kind of object (Ex: Magnetic card, Pacemaker etc.).
- Internal lithium battery in the unit should not be replaced by user because of danger of explosion if battery is incorrectly replaced, and must be replaced with the same type battery by expert.
- Do not leave the unit on an unstable place such as high shelves. It may fall down because of the vibration of the sound.

**CAUTION** when using this product in environments of low humidity.

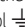
- It may cause static electricity in environments of low humidity.
- It is recommended to use this product after touching any metal object which conducts electricity.

#### For models using water-resistant products

When charged, the water-resistant function is limited, so use it in a place that is not exposed to water.

**POWER:** This unit operates on a mains supply of 200 - 240 V ~ 50 / 60 Hz

**Wiring:** This unit is supplied with a BS 1363 approved main plug. When replacing the fuse, always use a fuse of the same rating and approved to BS 1362. Never use this plug with the fuse cover omitted. To obtain a replacement fuse cover contact your dealer. If the type of plug supplied is not suitable for the mains sockets in your home, then the plug should be removed and a suitable type fitted. Please refer to the wiring instructions below.

**Warning:** A mains plug removed from the mains lead of this unit must be destroyed. A mains plug with bared wires is hazardous if inserted in a mains socket. Do not connect either wire to the earth pin, marked with the letter E or with the earth symbol  or coloured green or green and yellow. If any other plug is fitted, use same rating of fuse in the plug.

**Important:** The wires in this mains lead are coloured in accordance with the following codes:

- **BLUE: NEUTRAL, BROWN: LIVE** - As the colours of the wires in the mains lead of this unit may not correspond with the coloured marking identifying the terminals in your plug, proceed as follows: The wire which is coloured blue must be connected to the terminal which is marked with the letter N or coloured black. The wire which is coloured brown must be connected to the terminal which is marked with the letter L or coloured red.



## SIMPLE MANUAL

# Portable Bluetooth Speaker

XL5S



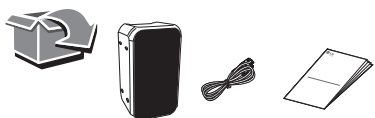
MFL71969109

2211\_Rev01



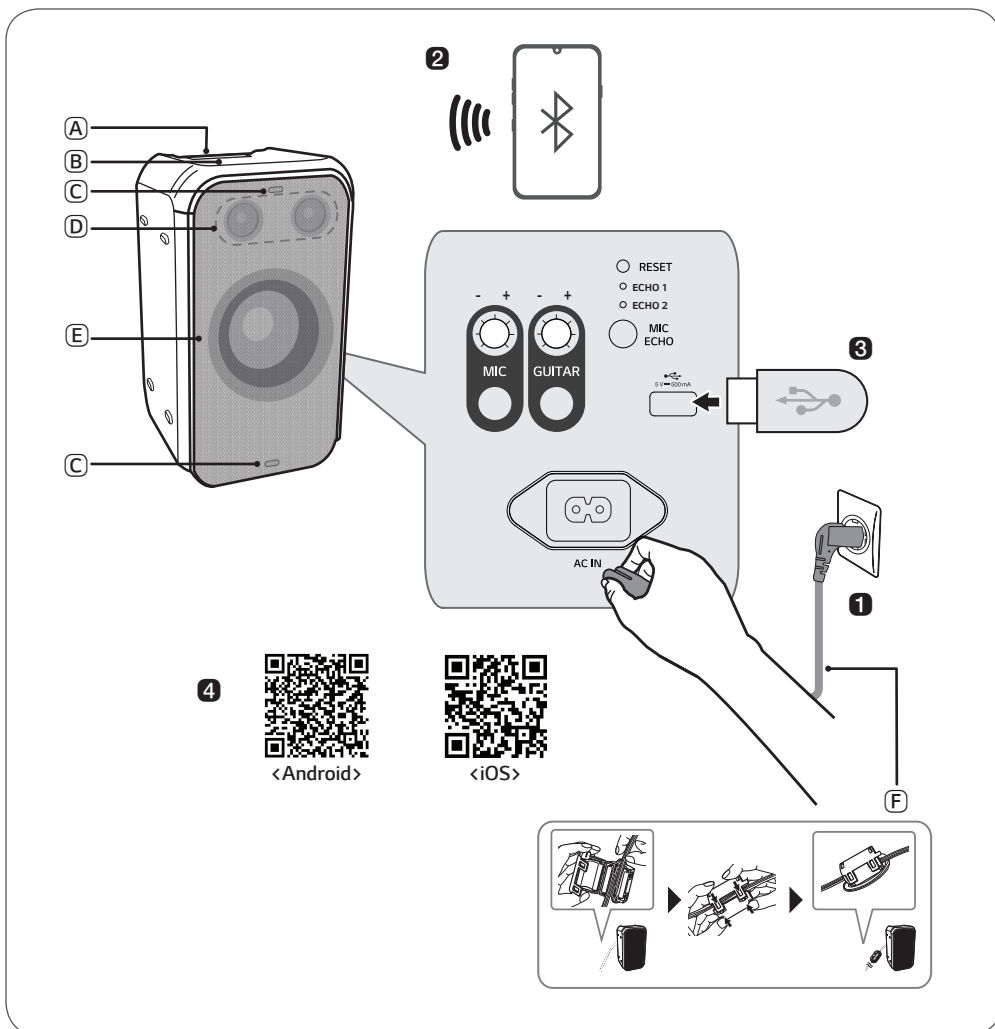
[www.lg.com](http://www.lg.com)

Copyright © 2023 LG Electronics Inc. All Rights Reserved.



## ENGLISH Installing and Using the Product

Please read this manual carefully before operating your set and retain it for future reference.  
To view the instructions of advanced features, visit <http://www.lg.com> or scan QR code and then download Owner's Manual. Some of the content in this manual may differ from your product.



- (A) Handle
- (B) Controls
- (C) Flash Lighting
- (D) Speaker (Tweeter)
- (E) Speaker (Woofer) / Woofer Lighting
- (F) Attaching the ferrite core (optional)
  - Wind the power cord cable twice around the ferrite core.

### 1 Connect the power cord to the product by opening the rear cover and charge it before use

### 2 Connecting the Speaker to a Smartphone via Bluetooth

- 1 Press the **Power** (⏻) button to turn on the product.
- 2 Press the **Function** (⏮) button on the product repeatedly to select the BT function. The BT LED blinks.
- 3 Tap the **Settings** (⚙) button on your smartphone and select **Bluetooth**. Turn on the **Bluetooth** function. (Off > On)
- 4 From the list of smartphone devices, find and tap on "LG-XL55(XX)".
- 5 Once the smartphone is connected to the product via **Bluetooth**, the BT LED will turn on. Play a desired track in the music app on your smartphone.

### 3 Playing Music from the USB

- 1 Open the back cover of the product and plug the USB storage device into the USB terminal.
- 2 Press the **Power** (⏻) button to turn on the product.
- 3 Press the **Function** (⏮) button on the product repeatedly to select the USB function. The USB LED will turn on.
- 4 Press the **Play/Pause** (⏮) button to enjoy the music.

### 4 Connecting to the LG XBOOM App

- 1 Find the **LG XBOOM app** on the Google Play or App Store and install it on your smartphone.
- 2 Run the **LG XBOOM app** and use its functions. (EQ, Wireless Party Link, Lighting, Setting etc.)

### 5 Power Saving

If there is no playback or button input for 15 minutes, the product turns off automatically. On the **LG XBOOM app**, you can enable or disable [Auto Power Management].

- Design and specifications are subject to change without notice.