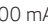


**Additional Information**

**Specification**

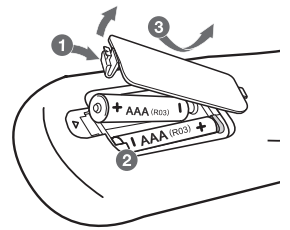
Power requirements	Refer to main label.
Power consumption	Refer to main label.
	Networked standby : 0.5 W (If all network ports are activated.)
Dimensions (W x H x D)	Approx. 360 mm x 58 mm x 298.5 mm
Net Weight	Approx. 2.46 kg
Bus Power Supply (USB)	5 V  500 mA
Amplifier (Total RMS output power)	1,000 W

Design and specifications are subject to change without notice.

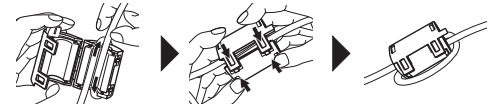
**How to disconnect the wireless network connection or the wireless device**

Turn off the unit by pressing the power button for more than 5 seconds.

**Replacement of battery**



**About Ferrite Core (Optional)**



Wind HDMI cable around the ferrite core.

SIMPLE MANUAL  
DVD Home Theater System

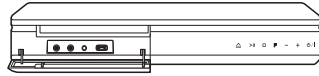
To view the instructions of advanced features, visit <http://www.lg.com> and then download Owner's Manual. Some of the content in this manual may differ from your unit.

MODEL  
LHD657M



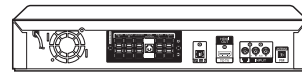


### Front Panel



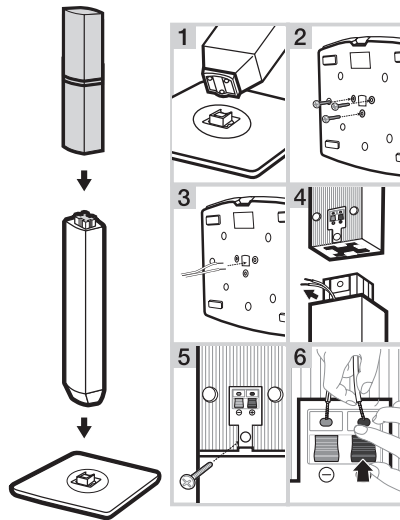
- MIC 1/2** ..... Connect a microphone.
- PORT. IN** ..... Connect to a Portable device.
- USB Port** ..... Connect a USB device.
- △** ..... Disc Tray Open / Close
- >||** ..... Starts / Pauses playback.
- ..... Stops playback.
- F** ..... Changes the input source or function.
- / +** ..... Adjusts volume.
- ⏻ / ⏻** ..... Power On / Off

### Rear Panel



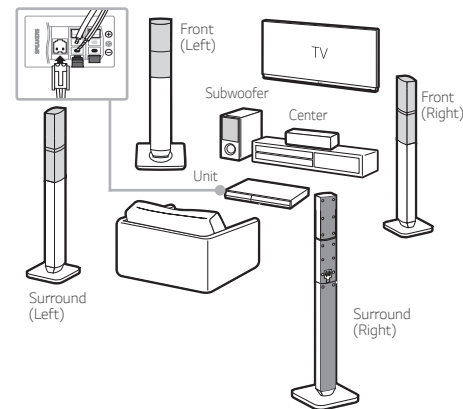
- SPEAKERS** ..... Connect to speakers.
- OPTICAL IN** ..... Connect to digital device.
- HDMI OUT TO TV** ..... Connect to TV.
- VIDEO OUT** ..... Connect to TV.
- AUX (L/R) INPUT** ..... Connect to analogue device.
- ANTENNA FM** ..... Connect to radio antenna.

### 1 Speaker Assembling



### 2 Speaker Connection

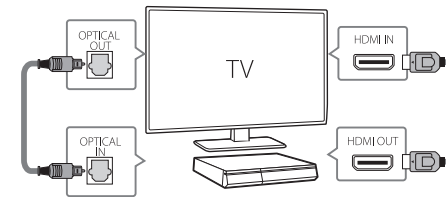
! Speaker design and connection method may be different according to models.



### 3 TV Connection

#### HDMI & Optical Connection

- 1 Connect the Unit to the TV using HDMI & Optical cable.
- 2 Set the input selector to HDMI on the TV.
- 3 Set up [External Speaker (Optical)] on your TV setting menu.
- 4 Follow the instructions on the TV screen using remote control.



### 4 Home Menu

Home menu appears on the TV screen. Enjoy various functions on the unit.



For more information, download the online owner's manual. <http://www.lg.com>