



ENGLISH

PORTUGUÊS

OWNER'S MANUAL

REFRIGERATOR- FREEZER

Please read this owner's manual thoroughly before operating and keep it handy for reference at all times.



MFL67783559

www.lge.com.br

Registration

The model and serial number are found on the rear of this unit. This number is unique to this unit and not available to others. You should record requested information here and retain this guide as a permanent record of your purchase. Staple your receipt here.

Date of Purchase : _____

Dealer Purchased From : _____

Dealer Address : _____

Dealer Phone No. : _____

Model No. : _____

Serial No. : _____

Table of Contents

Introduction	Important Safety Instruction	3
	Identification of Parts	9
Installation	Installation	10
	Starting	10
Operation	Temperature Control	11
	Hygiene Fresh (Optional)	12
	Express Freeze	12
	Eco Friendly	13
	Self Test	13
	Door Alarm	13
	Lock	13
	On/Off	13
	Ice Making	14
	Defrosting	14
	Water Dispenser (Optional)	14
	Freezer Compartment	15
	Sliding Shelf (Optional)	15
	Pull Out Tray (Optional)	16
Lamp Replacement	17	
Suggestion On Food storage	Storing Food	18
	Suggestion For Energy Saving	18
Care and Maintenance	General Information	19
	Cleaning	20
	Smart Diagnosis™	21
	Trouble Shooting	22
	It is normal...	24

Important Safety Instruction

▲ WARNING

- ▲ Keep ventilation openings, in the appliance enclosure or in the built-in structure, clear of obstruction.
- ▲ Do not use mechanical devices or other means to accelerate the defrosting process, other than those recommended by the manufacturer.
- ▲ Do not damage the refrigerant circuit.
- ▲ Do not use electrical appliances inside the food storage compartments of the appliance, unless they are of the type recommended by the manufacturer.
- ▲ The refrigerant and insulation blowing gas used in the appliance require special disposal procedures. When disposal, please consult with service agent or a similarly qualified person.



This appliance contains a small amount of isobutane refrigerant (R600a), natural gas with high environmental compatibility, but it is also combustible. When transporting and installing the appliance, care should be taken to ensure that no parts of the refrigerating circuit are damaged. Refrigerant squirting out of the pipes could ignite or cause an eye injury. If a leak is detected, avoid any naked flames or potential sources of ignition and air the room in which the appliance is standing for several minutes.

In order to avoid the creation of a flammable gas air mixture if a leak in the refrigerating circuit occurs, the size of the room in which the appliance may be sited depends on the amount of refrigerant used. The room must be 1 m² in size for every 8 g of R600a refrigerant inside the appliance. The amount of refrigerant in your particular appliance is shown on the identification plate inside the appliance.

Never start up an appliance showing any signs of damage. If in doubt, consult your dealer.

▲ CAUTION

- If the wall socket is loose, do not insert the power plug.
It may cause electric shock or fire.
- Never unplug your refrigerator by pulling on the power cord. Always grip plug firmly and pull it straight out from the outlet.
You may disconnect a wire and cause a short circuit.
- Do not use a wet or damp cloth when cleaning the plug. Remove any foreign matter from the power plug pins.
Otherwise, there is a risk of fire.
- After unplugging the appliance, wait for at least five minutes before plugging it again to the wall socket.
Abnormal operation of the freezer may cause material damage.
- If the appliance is not to be used for a long time, pull out the power plug.
Any deterioration in the insulation may cause fire.
- Do not let children touch or play with the control panel on the front of the appliance.
- The refrigerant used in fridge/freezer and the gases in the insulation material require special disposal procedures. Ensure that none of the pipes on the back of the appliances are damaged prior to disposal.

▲ WARNING

Please do not use a dishwasher to clean the lower drawers; the high temperature may cause damage to the baskets which make them unusable.

Important Safety Instruction

BASIC SAFETY PRECAUTIONS

This guide contains many important safety messages. Always read and obey all safety messages.

▲ This is the safety alert symbol. It alerts you to safety messages that inform you of hazards that can kill or hurt you or others or cause damage to the product. All safety messages will be preceded by the safety alert symbol and the hazard signal word **WARNING**, or **CAUTION**. These words mean:

▲ WARNING You can be killed or seriously injured if you don't follow instructions.

▲ CAUTION Indicates an imminently hazardous situation which, if not avoided, may result in minor or moderate injury, or product damage only.

All safety messages will identify the hazard, tell you how to reduce the chance of injury, and tell you what can happen if the instructions are not followed.

▲ WARNING

To reduce the risk of fire, electric shock, or injury to persons when using your product, basic safety precautions should be followed, including the following. Read all instructions before using this appliance.

1. When connecting the power

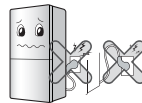
The dedicated outlet should be used.

- Using several devices at one outlet may cause fire.
- The electric leakage breaker may damage food and the dispenser may be leaked.



Do not allow the power plug to face upward or to be squeezed at the back of the fridge-freezer.

Water may be flown into or the plug may be damaged, which causes fire or electric shock.



Prevent the power cord from being squeezed or imprinted if the refrigerator is pushed in after the power plug is extracted during the installation.

It becomes the cause of fire or electric shock.

When moving your appliance away from the wall, be careful not to roll over or damage the power cord.

Do not allow the power cord bent or pressed by the heavy object to be damaged.

It may damage the power cord to cause fire or electric shock.



Do not extend or modify the length of the power plug.

It causes electric shock or fire by the electric damage of the power cord or others.



Unplug the power plug when cleaning, handling or replacing the interior lamp of the fridge-freezer.

- It may cause electric shock or injury.
- When replacing the interior lamp of the fridge-freezer, make sure that the rubber ring for preventing the electric spark within the socket is not taken off.



Important Safety Instruction

Do not pull out the cord or touch the power plug with wet hands.
It may cause electric shock or injury.



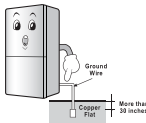
Remove water or dust from the power plug and insert it with the ends of the pins securely connected.
Dust, water or unstable connection may fire or electric shock.



Pull out the power plug not by grasping the cord but the plug of its end.
It may cause electric shock or short circuit to fire.



Make sure of grounding. Consult a qualified electrician or service person if the grounding instructions are not completely understood, or if you have doubts on whether the appliance is properly grounded or not.
The incorrect grounding may cause breakdown and electric shock.



Be sure to use grounded exclusive proper voltage consent for the power plug.
It becomes the cause of fire.

When the power cord or the power plug is damaged or the holes of the outlet are loosed, do not use them.
It may cause electric shock or short circuit to make fire.



Wait for 5 minutes or longer when reconnecting the plug.
It may cause the operation of the freezer to fail.



2. When using the fridge-freezer

Do not place the heavy object or the dangerous object (container with liquid) on the fridge-freezer.
It may be dropped to cause injury, fire or electric shock when opening or closing the door.



Do not cling to the door or the shelves of the door or the cool chamber.
It may make the fridge-freezer fallen down or damage the hands. Especially, do not allow the children to do the above.



Prevent children from entering the product.
It may endanger the life of a child if the child enters the refrigerator.



Opening and closing the door of the refrigerator vigorously may cause the stored food in the refrigerator basket to fall by shock and hurt the foot, so take precautions.

Do not install the fridge-freezer in the wet place or the place which water or rain splashes.
Deterioration of insulation of electric parts may cause electric leakage.



Important Safety Instruction

Do not use or store inflammable materials ether, benzene, alcohol, medicine, LP gas, spray or cosmetics near or in the fridge-freezer. It may cause explosion or fire.



Do not place the lit candle within the fridge-freezer to deodorize. Do not use drier to dry the inside, nor light a candle to remove odor. It may cause explosion or fire.



Do not store the medicine or the academic materials at the fridge-freezer.

When the material with the strict temperature control is stored, it may be deteriorated or it may make an unexpected reaction to cause any risk.



Do not use the combustible spray near the fridge-freezer. It may cause fire.

Do not store explosive substances such as aerosol cans with a flammable propellant in this appliance.



Install in places away from the heat sources such as fireplaces, heaters and ovens. Pay particular attention to avoid locating near gas related products.

Not doing so may become the cause of an explosion or fire.



Do not place flower vase, cup, cosmetics, medicine or any container with water on the fridge-freezer.

It may cause fire, electric shock or injury by dropping down.



In case of thunder and lightning, or not in use for a long period of time, detach the power plug.

There is a danger of electric shock or fire.



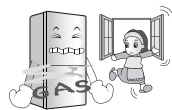
Use the submerged fridge-freezer after checking it.

It may cause electric shock or fire.



When gas is leaked, do not touch the fridge-freezer or the outlet and ventilate the room immediately.

- The explosion by spark may cause fire or burn.
- Because this fridge-freezer uses natural gas (isobutane, R600a) as the environment-friendly refrigerant, even a small amount (80~90 g) is combustible. When the gas is leaked by the severe damage during delivering, installing or using the fridge-freezer, any spark may cause fire or burn.



Do not spray water at the outside or the inside of the fridge-freezer or do not clean it with benzene or thinner.

Deterioration of insulation of electric parts may cause electric shock or fire.



When any strange smell or smoke is detected from the fridge-freezer, disconnect the power plug immediately and contact to the service center.

It may cause fire.



Important Safety Instruction

Do not allow any person except the qualified engineer to disassemble, repair or alter the fridge-freezer.

It may cause injury, electric shock or fire.



Do not use the fridge-freezer for non-domestic purpose (storing medicine or testing material, using at the ship, etc.).

It may cause an unexpected risk such as fire, electric shock, deterioration of stored material or chemical reaction.



When disposing the fridge-freezer, remove the packing materials from the door or take off the doors but leave the shelves in place so that children may not easily climb inside.

It may cause to lock out the child.



This appliance is not intended for use by persons (including children) with reduced physical, sensory or mental capabilities, or lack of experience and knowledge, unless they have been given supervision or instruction concerning use of the appliance by a person responsible for their safety.

Children should be supervised to ensure that they do not play with the appliance.

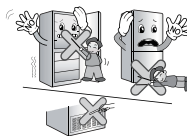
Install the fridge-freezer on the solid and level floor.

Installing it on the unstable place may cause death by falling down the fridge-freezer when opening or closing the door.



Do not insert the hands or the metal stick into the exit of cool air, the cover, the bottom of the fridge-freezer, the heatproof grill (exhaust hole) at the backside.

It may cause electric shock or injury.



CAUTION

Violating this direction may cause injury or damage house or furniture. Always be careful, please.

Do not touch food or containers at the freezer with wet hands.

It may cause frostbite.



Do not place the food in disorder inside the refrigerator.

The food may fall during opening and closing the door of the refrigerator and hurt people.

Do not put bottle in the freezer.

It may freeze the contents to break the bottle to cause injury.



Do not insert the hands into the bottom of the fridge-freezer.

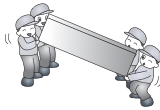
The iron plate of the bottom may cause injury.



Important Safety Instruction

Carry the fridge-freezer with the handle bar at the bottom of the front and the top of the rear.

Otherwise, your hands may be slipped to cause injury. Because the product is heavy, carrying it alone may hurt people or accidents may occur.



Because opening or closing the door of the fridge-freezer may cause injury to the person around it, be careful, please.

Opening or closing the door may cause feet or hands to be caught in the chink in door or the child to be get hurt by the corner.



Do not put any living animal in the fridge-freezer.

It may cause the animal died.



Precaution

⚠ WARNING

- This fridge-freezer must be properly installed and located in accordance with the Installation Instruction before it is used.
- Never unplug your fridge-freezer by pulling on the power cord. Always grip plug firmly and pull straight out from the outlet.
- After your fridge-freezer is in operation, do not touch the cold surfaces in the freezer compartment, particularly when hands are damp or wet. Skin may adhere to these extremely cold surfaces.

Accessibility of Supply Plug

The supply plug of the refrigerator-freezer should be placed in easy accessible position for quick disconnection in emergency.

Supply Cord Replacement

If the supply cord is damaged, it must be replaced by the manufacturer or its service agent or a similarly qualified person in order to avoid a hazard.

DANGER

Risk of child entrapment.

Before you throw away your old refrigerator or freezer, take off the doors.

Leave the shelves in place so that children may not easily climb inside.

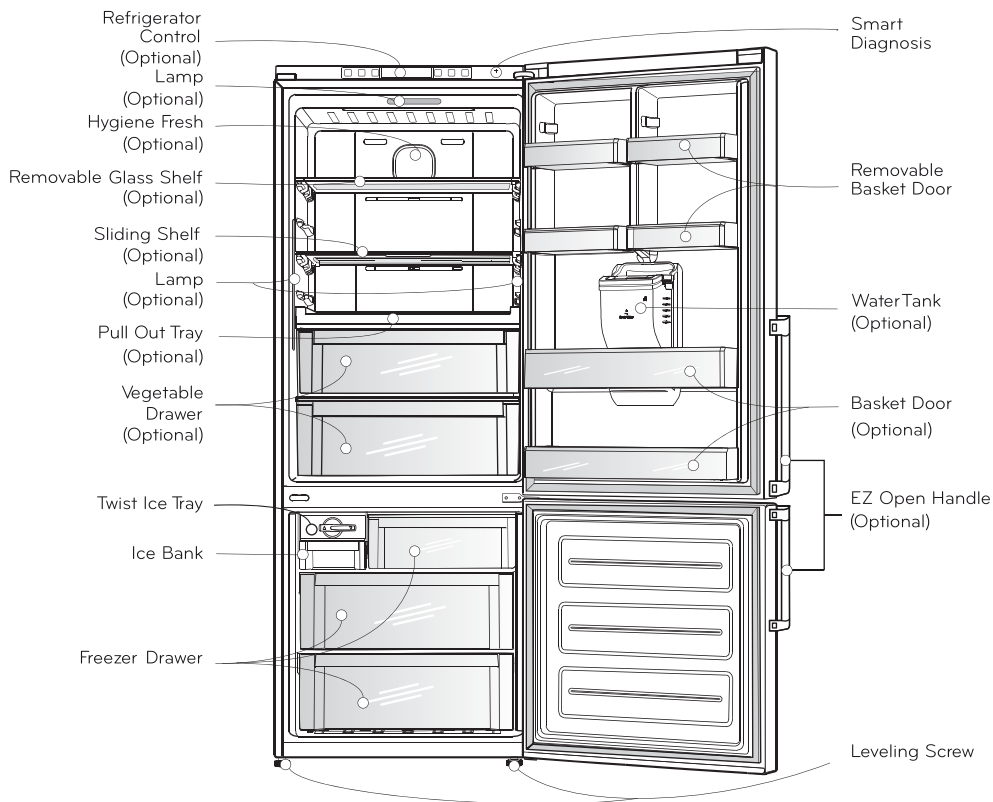
Don't store

- Don't store or use gasoline or other flammable vapors and liquids in the vicinity of this or any other appliance.
- Don't store explosive substances such as aerosol cans with a flammable propellant in this appliance.

Grounding (Earthing)

In the event of an electric short circuit, grounding (earthing) reduces the risk of electric shock by providing an escape wire for the electric current. In order to prevent possible electric shock, this appliance must be grounded. Improper use of the grounding plug can result in an electric shock.

Identification of Parts



Note

If you find some parts missing from your unit, they may be parts only used in other models.

Installation

1. Select a good location.
Place your fridge-freezer where it is easy to use.
2. Avoid placing the unit near heat sources, direct sunlight or moisture.
3. To ensure proper air circulation around the fridge-freezer, please maintain sufficient space on both the sides as well as top and maintain at least 2 inches (5 cm) from the rear wall.
4. To avoid vibration, the unit must be leveled.
If required, adjust the leveling screws to compensate for the uneven floor.
The front should be slightly higher than the rear to aid in door closing.
Leveling screws can be turned easily by tipping the cabinet slightly.
Turn the leveling screws counterclockwise (↺) to raise the unit, clockwise (↻) to lower it.
5. Clean your fridge-freezer thoroughly and wipe off all dust accumulated during shipping.
6. Install accessories such as ice cube box, etc., in their proper places. They are packed together to prevent possible damage during shipment.
7. Connect the power supply cord (or plug) to the outlet. Don't double up with other appliances on the same outlet.

Appliance usage range

This appliance is intended to be used in household and similar applications such as:

- staff kitchen areas in shops, offices and other working environments;
- farm houses and by clients in hotels, motels and other residential type environments;
- bed and breakfast type environments;
- catering and similar non-retail applications

Climate class

The appliance is designed to operate at the limited range of ambient temperature, depending on climate zones. Do not use the appliance at the temperature out of the limit. Climate class of your appliance is indicated on the label with technical description inside the fridge compartment.

Class	Symbol	Ambient temperature range °C
Extended temperate	SN	+10 ~ +32
Temperate	N	+16 ~ +32
Subtropical	ST	+16 ~ +38
Tropical	T	+16 ~ +43

Starting

When your fridge-freezer is installed, allow it 2-3 hours to stabilize at normal operating temperature prior to filling it with fresh or frozen foods.

If power plug is disconnected, allow 5 minutes delay before restarting.

Your fridge-freezer is now ready for use.

Note

Do not move refrigerator while the refrigerator is operating.

Compressor may occur a temporary rattling noise. (This is normal and will not impact on the performance or the life of the compressor. The rattling will stop after the refrigerator comes to a rest.)

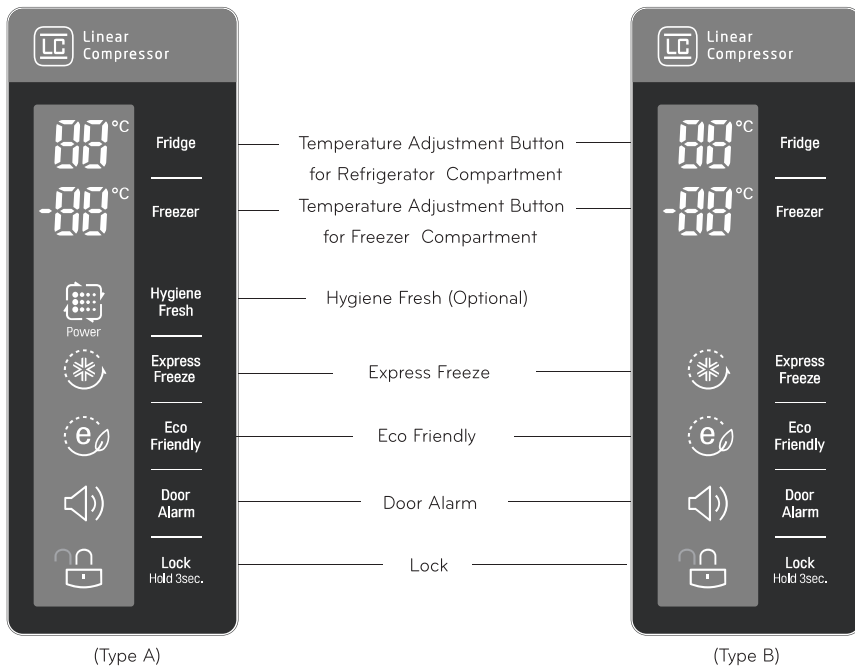
Temperature Control

Your refrigerator has controls that let you regulate the temperature in the refrigerator and freezer compartments.

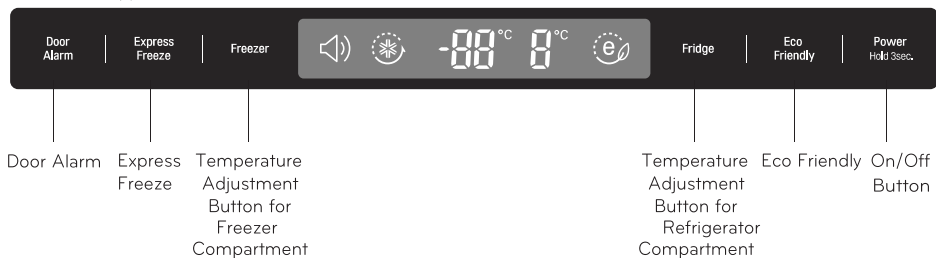
Display Panel For Temperature Control

Adjusting the temperatures and functions

< Exterior Type >



< Interior Type >



Note

See detailed button description on page 12~13

How to adjust the temperature in the refrigerator and freezer compartment

The initial target temperature of the refrigerator and freezer Compartment is 3°C and -20°C respectively.

You can now adjust the target temperature of the compartments as you wish.

< Exterior Type >



< Interior Type >



Refrigerator

When the button is pressed, the temperature of the refrigerator is 3°C ▶ 2°C ▶ 1°C ▶ 7°C ▶ 6°C ▶ 5°C ▶ 4°C ▶ 3°C sequentially.

Freezer

When the button is pressed, the temperature of the freezer is -20°C ▶ -21°C ▶ -22°C ▶ -23°C ▶ -15°C ▶ -16°C ▶ -17°C ▶ -18°C ▶ -19°C ▶ -20°C sequentially.

Note

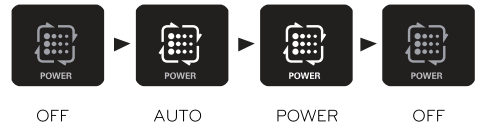
The actual inner temperature varies depending on the food status, as the indicated setting temperature is a target temperature, not actual temperature within refrigerator. Refrigeration temperature stability may fluctuate initially. Please adjust temperature as above after using refrigerator for minimum 2~3 days.

Hygiene Fresh (Optional)

The Hygiene Fresh function has three modes, Auto (default mode when icon is lit up) Power mode (when icon and Power are lit up) and Off (icon is not lit up). Power mode can be engage by pressing the Hygiene Fresh touch control respectively

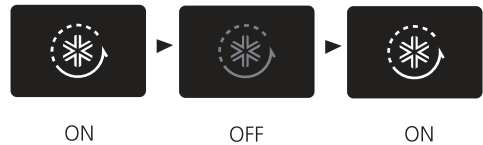
Auto>Power>Off>Auto...

Power mode will resume back to Auto mode after 4 hours.



Express Freeze

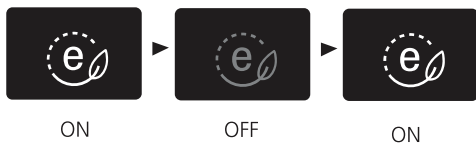
- Select this function for prompt freezing.
- This function is used when you want to freeze the foods quickly. Press the Express Freeze button once, and then the quick freeze operation starts and the Express Freezing lamp will be on.
- The Express Freeze operation takes about 24 hrs. When its operation ends, it automatically returns to the previous temperature setting. If you want to stop the quick freeze operation manually, press the Express Freeze button once more, the lamp goes out, and the Express Freeze operation stops and the refrigerator returns to the previous temperature setting.



- The Express Freeze indicator remains on after the Express Freeze function is selected.

Eco Friendly

- This function makes the refrigerator work in a power saving mode which is useful for when you are away on holiday, by reducing energy consumption.
- Pressing 'ECO FRIENDLY' starts the operation and turns the lamp on and pressing it again stops the operation.



Note

When the Eco Friendly mode is "ON", the Refrigerator, Freezer temperature buttons and Express Freezing function will not operate. To cancel the Eco Friendly mode, press the Eco Friendly button off so that the other buttons work and the refrigerator returns to the previous temperature setting.

Self Test

- This function automatically detects certain malfunctions when the refrigerator is in use.
- When a malfunction occurs, the temperature display locks out and cannot be changed. Do not turn off the power. Call your nearest service provider so that they can diagnose the display indicators. If the power is turned off the error message will be reset and may be difficult to properly diagnose.

Door Alarm

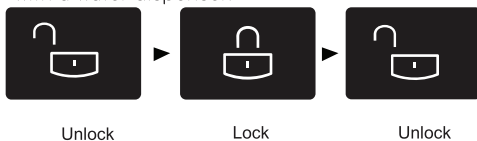
- When the doors of the refrigerator are opened for longer than 1 minute, the alarm sounds repeatedly every 30 seconds until the door is closed. Please contact with the local service center if the alarm continues to sound even after closing the door.
- The door alarm can be muted by pressing the Door Alarm button.



Lock

For Exterior Type

- Pressing this button stops the operation of other buttons.
- "Locking" or "Un-Locking" is repeated whenever pressing the LOCK button. (For "Locking" press the "LOCK" button for 3 secs. For "Un-Locking" press the "LOCK" button for 3 secs.)
- When 'LOCK' is activated, all other buttons will not respond. The lock function does not stop the water dispensing operation on models fitted with a water dispenser.



On/Off

For Interior Type

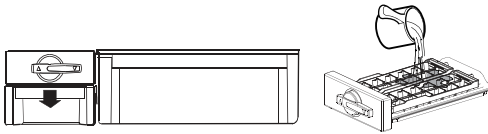
- Pressing this button turns the refrigerator power ON or OFF. In the OFF mode, the unit will stop cooling and the interior lights will not turn on when the door is opened.
- ON or OFF is repeated whenever pressing the ON/OFF button. (For "OFF" press the "Power Hold 3sec." button for 3~7 secs. For "ON" press the "Power Hold 3sec." button for 1 secs.)

Note

This button does not isolate the mains power from the refrigerator.

Ice Making

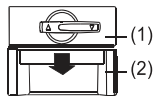
- Take out the twist ice maker, fill it up and put it back to its original location.



- Ice is dropped into the ice storage bin by rotating the ice separation handle on the ice making compartment.



- You can make ice or use this space as a storage space for Frozen food. Removing (1) (Twist ice maker) as shown in the picture.



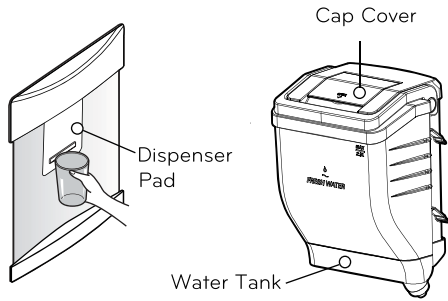
Note

- Rotating the ice separation handle before ice is fully frozen may cause the remaining water to drop into the ice storage bin and lump the ice together.
- Never pour water into the ice storage bin for the intension of freezing it as it can break the ice storage bin.
- When the ice storage bin is full, it is designed for the ice to fall to the bottom in case is overfilled . Be careful not to overfill the storage bin.
- Gently remove the ice storage bin when accessing ice so that the slide stopper is not broken.

Defrosting

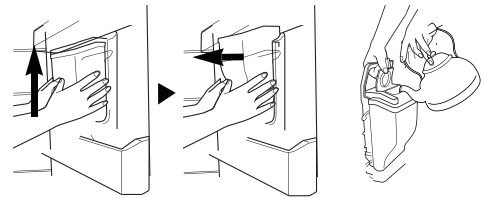
- Defrosting takes place automatically.
- The defrosting water flows down to the evaporating tray and is evaporated automatically.

Water Dispenser (Optional)



Filling of Water Tank

How to Remove the Water Tank



- Refitting is done in reverse to removal
- Be careful not to press on the dispensing valve.
- When refitting the tank to the door, ensure that it is properly secured in its place.

- Pull out the water tank.
Then open the cap cover.
- Up to 2.3 liters of water can be added.
- Only fill with drinkable water. Never fill with any other liquid other than water. Never pour hot water into the tank.

Drinking

- Press the dispenser pad with a cup or glass.
- Water will be dispensed for as long as the pad is pressed.
- To minimise any spillage, slowly remove the cup or glass from the dispenser pad.
- In the event of accidental spillages, wipe up any water from the dispenser area with a soft cloth.

⚠ CAUTION

Filling the water tank with beverages other than drinking water may cause the dispenser to malfunction.

⚠ WARNING

Fill with drinkable water only.
Do not fill the water tank with any other beverages. It must be filled with drinkable water only.
Never fill with hot or warm water.

Note

When dispensing problems occur, re-install the waterbottle securely.

The dispenser pad should be firmly pressed when dispensing water.

Freezer Compartment

If a large quantity of food is to be placed in the freezer compartment,

1. The upper drawer of freezer compartment, twist ice maker kit shall be taken out of the appliance and the food shall be stacked directly on the wire shelf.
2. The middle drawer of freezer compartment shall be taken out of the appliance and food shall be stacked directly on the wire shelf.

Freezer compartment provides wire self on default to maximize food storage capacity. And also the drawer is provided to convenient usage for watery meat or half-liquid state food.



Max Freezing capacity

If there is already food in the compartment, please set freezer to the coldest condition (-23°C) and press on "Express Freeze" button several hours before placing fresh product in the freezer compartment to get maximum capacity, As a rule 7 hours is adequate.

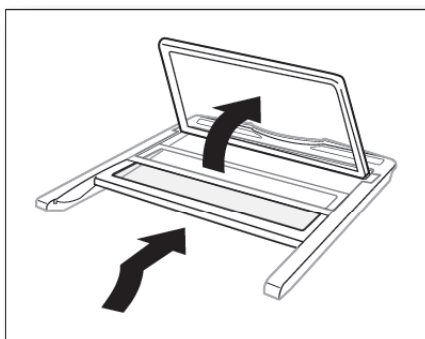
Sliding Shelf (Optional)

You can slide the sliding shelf in if you need to accommodate taller containers or products on the shelf underneath.

Note

Remove all items from the rear half shelf and the front sliding shelf.

1. Slightly lift up the front of the sliding shelf and slide it inward.
2. The rear half shelf will raise to allow the front to slide in under it, or it can be lifted manually toward the rear wall to allow easier sliding of the front sliding shelf.
3. You can simply pull out the sliding shelf in reverse procedure to return it to the extended position.

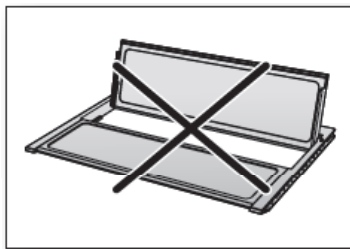


⚠ CAUTION

Caution should be taken when adjusting the shelf as it can fall out if not handled correctly.

⚠ CAUTION

Do not lift up the rear half shelf and keep it in the lifted position. Tall items are not to be stored at the rear of the shelf.

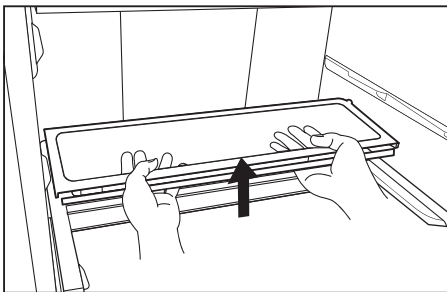
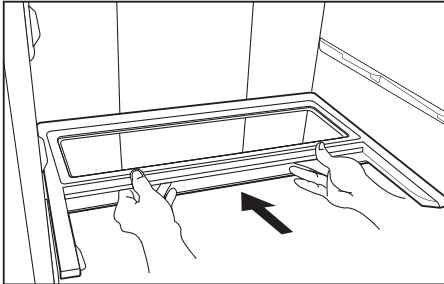


How to remove the rear half shelf.

Slide the front sliding shelf in under the rear half shelf. Then lift the rear half shelf up to remove it.

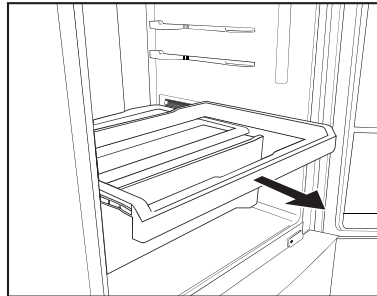
Note

Make sure the rear half shelf and the front sliding shelf are securely restored to the shelf position before placing items upon it.



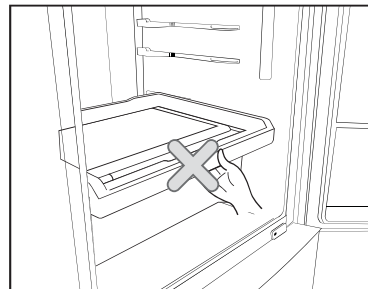
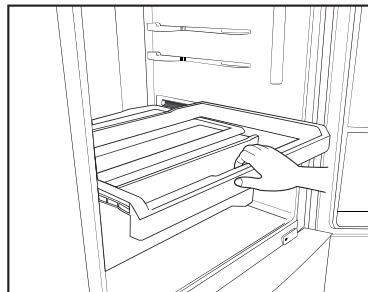
Pull Out Tray (Optional)

The pull out tray offers easy access to items stored at the rear of the tray by sliding it out closer to you.



CAUTION

Please do not hold the bottom of the tray when slide the tray in, as it could catch your hand.



How to remove the Pull Out Tray

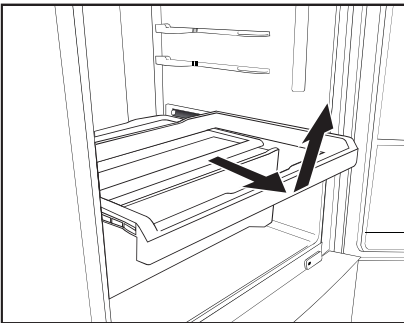
Fully extend the Pull-Out-Tray and lift the front then pull it out slowly.

Note

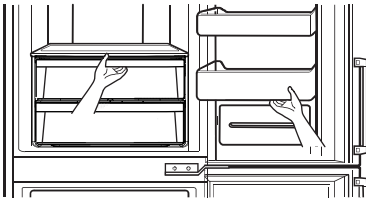
Before removing the pull out Tray, remove the second lowest door basket from the refrigerator door.

Note

Apply caution when pulling out the tray so that items do not fall off. Remove all food items from on the tray first before removing it.



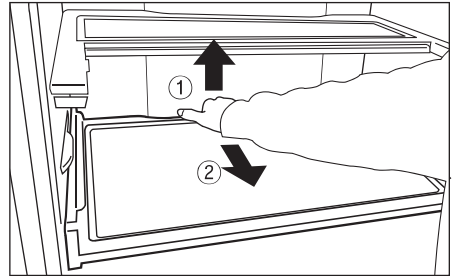
How to separate the vegetable drawer



Remove the lower basket from the door by lifting it up.
Pull the drawer until it stops and while slightly lifting it up, pull it further to remove it completely.

How to remove Tray Vegetable Cover

- For the smooth operation of the tray drawer and pull-out tray, Cover T/V is fixed tightly. Beware of disassemble. Assembly is the reverse order of disassembly.



- First, disassemble Pull-out tray and Tray drawer, then
 1. Put your hand into the gap in the refrigerator and the Cover T/V then lift up.
 2. Remove by pulling in front while it is lifted up.

Lamp Replacement

Note

This product uses LED Lamps which can not be replaced by the user.

Please contact an authorized service center for LED lamp service or replacement.

Storing Food

▲ CAUTION

- Do not store food which spoils easily at low temperature, such as banana, and melon.
- Allow hot food to cool prior to storing. Placing hot food in the refrigerator could spoil other food, and lead to higher electricity bills.
- When storing the food, use a container with a lid. This prevents moisture from evaporating, and helps food to keep its taste and nutrients.
- Do not block air vents with food. Smooth circulation of cold air keeps refrigerator temperature even.
- Do not open the door frequently. Opening the door lets warm air enter the refrigerator, and cause temperature to rise.
- Never keep too many foods in the door baskets, as this may stop the door from fully closing.
- Do not store bottles in the freezer compartment- they may break when frozen and cause injury.
- Do not refreeze food that has been thawed. This causes loss of taste and nutrition.
- Do not store pharmaceutical products, scientific materials or other temperature sensitive products in the refrigerator.
Products that require strict temperature controls must not be stored in the refrigerator.
- If you want to quick freeze new food, place it in the middle drawer of freezer compartment, and then press the Express Freeze button.
- To ensure good air circulation in the appliance, push in the freezer drawers all the way.

Suggestion for Energy Saving

- Please do not keep the door open for a long period of time.
- Do not over load the shelves and drawers with food as this will compromise the air flow and cause the refrigerator to run for longer periods.
- Do not set the temperature of refrigerator lower than needed. Do not put the food near the temperature sensor. Keep a distance of at least 5cm from the sensors.
- Allow hot food to cool prior to storing. Placing hot food in the refrigerator could spoil other food, and lead to higher electricity bills.
- Do not block air vents with food. Smooth circulation of cold air keeps refrigerator temperatures even.
- Do not open the door frequently. Opening the door lets warm air enter the refrigerator, and cause internal temperatures to rise.
- Arrange food items so that frequently used items are placed toward the front of the shelves or drawers.

General Information

Vacation time

- During average length vacations, you will probably find it best to leave the refrigerator in operation. Place freezable items in freezer for longer life. When you plan not to use the appliance, remove all food, disconnect the power cord, clean the interior thoroughly, and leave each door OPEN to prevent odor formation.

Power Failure

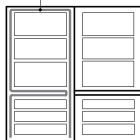
- A 1 to 2 hour power failure will not significantly disrupt the internal temperature. Try to avoid opening and closing the door too frequently so that the temperatures remain as stable as possible until the power is restored.

If You Move

- Take out all food from the refrigerator and firmly fix loose items with tape.
- Turn the leveling screws until they stop before moving the refrigerator. Otherwise they may scratch the floor and cause the refrigerator not to move.

Anti Condensation Pipe

- The Anti-Condensation pipe is installed around the front side of refrigerator and freezer, as well as on the partition **Anti-Condensation Pipe** between refrigerator compartment and freezer compartment to prevent dew and condensation.
- Especially after installation or when ambient temperatures are high, the refrigerator may feel hot on the front and side surfaces, which is quite normal.



To Reverse the Doors (Optional)

- Your fridge-freezer is designed with reversible doors, so that they may open from either the left or right hand side to suit your kitchen design.

⚠ CAUTION

However, When you want to reverse the doors, you must call to service agent. Reversing the doors is not covered by the warranty.

Cleaning

Before Cleaning

Be sure to unplug the power before cleaning or vacuuming any exterior surface or covers.

Exterior

Clean the outside of the refrigerator with a soft cloth soaked with warm water or mild dishwashing detergent. If you use a detergent, be sure to wipe it with a clean wet cloth.

Interior

Same as above.

After Cleaning

Check that the power cord is not damaged, power plug has not overheated, and that the power plug is properly inserted into the outlet.

WARNING

Be sure to dry the appliance with a cloth after wiping it with water.

Do not use abrasive, petroleum, benzene, thinner, hydrochloride acid, boiling water, rough brushes or scourers, etc, as they may damage parts of the refrigerator.

Water Dispenser Drip Tray

Wipe moisture from around the door part and the drip tray using a clean cloth.

Water Dispenser

Wipe moisture from the dispenser area and on the dispenser pad using a cloth.

Separating the Water Tank lid from the water tank.

- Remove the Water Tank from the door (refer to page 14). Lift up the release lever and release the 2 side clips on the Tank lid.
- The water tank can be washed when removed from the refrigerator by using neutral cleansing agents. Rinse thoroughly before refitting and refilling.

Cleaning the Water Tank and filling lid

The water tank lid and filling cap should be cleaned periodically after being removed from the water tank. A small brush such as a toothbrush can be used to clean the grooved part of the filling cap.

CAUTION

Ensure that the Water Tank lid is securely fitted to the Water Tank before filling it through the fill hole.

Smart Diagnosis™

(Optional)

Should you experience any problems with your refrigerator, it has the capability of transmitting data via your telephone to the LG service center. This gives you the capability of speaking directly to our trained specialists. The specialist records the data transmitted from your machine and uses it to analyze the issue, providing a fast and effective diagnosis.

If you experience problems with your refrigerator, call to the LG service center.

Only use the Smart Diagnosis feature when instructed to do so by the LG call center agent. The transmission sounds that you will hear are normal and sound similar to a fax machine.

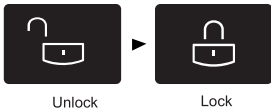
Smart Diagnosis cannot be activated unless your refrigerator is connected to power.

If your refrigerator is unable to turn on, then troubleshooting must be done without using Smart Diagnosis.

First, call to the LG service center. Only use the Smart Diagnosis feature when instructed to do so by the LG call center agent.

1. Close the refrigerator door.
2. Set display lock (Maintain 5 min protect logic) button for 3 seconds.

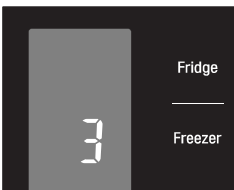
-In case of unlock condition.



-In case of lock condition.



3. Press and hold the 'Freezer' button for more than 3 seconds.



It will display "3", other LED will turn OFF

Note

After 5 minutes closing door, this option turn off and display will return to normal condition.

4. Open the refrigerator door.
5. Following the instructions of the operator, hold the phone's microphone close to the icon «SmartDiagnosis».



6. Hold the phone in the position until the end of the sound data transfer.
7. Keep the phone in place until the tone transmission has finished. This takes about 3 to 6 seconds

Resume your conversation with the consultant, who will then be able to assist you in using the information transmitted for analysis.

Note

- For best results, do not move the phone while the tones are being transmitted.
- If the call center agent is not able to get an accurate recording of the data, you may be asked to try again.
- Call quality differences by region may affect the function.
- Use the home telephone land line for better communication strength and signal clarity.
- Poor signal quality may result in poor data transmission from your phone to the machine, which could cause Smart Diagnosis to not work properly.

Trouble Shooting

Before calling for service, check this list. It may save you both time and expense. This list includes common occurrences that are not the result of defective workmanship or materials in this appliance.

Problem	Possible Causes
Refrigerator does not operate	<ul style="list-style-type: none"> • Power plug may be unplugged from the power outlet. Plug it in securely. • House fuse has blown or circuit breaker has tripped. Check and/or replace fuse and reset circuit breaker. • Power cut. Check house lights and other appliances.
Refrigerator or Freezer Compartment Temperature too warm	<ul style="list-style-type: none"> • Temperature control not set on proper position. Refer to Temperature Control section. • Appliance is placed close to a heat source. • Warm weather-frequent door openings. • Door left open for a long time. • Package holding door open or blocking air duct in freezer compartment.
Vibration or Rattling or Abnormal Noise	<ul style="list-style-type: none"> • The floor on which the refrigerator is installed may be uneven or the refrigerator may be unstable. Make it even by rotating the leveling feet. • Unnecessary objects placed in the back side of the refrigerator.
Frost or Ice Crystals on frozen Food	<ul style="list-style-type: none"> • Door may have been left ajar or package holding door open. • Too frequent or too long door openings. • Frost within food packaging can be normal.
Moisture forms on Cabinet Surface	<ul style="list-style-type: none"> • This phenomenon is likely to occur in a wet or humid environment. Wipe it with a dry towel.
Moisture collects inside	<ul style="list-style-type: none"> • Too frequent or too long door openings. • In humid weather, air carries moisture into refrigerator when doors are opened.
Refrigerator has odor	<ul style="list-style-type: none"> • Foods with strong odors should be tightly covered or wrapped. • Check for spoiled food. • Interior needs cleaning. Refer to CLEANING section.

Door not closing properly

- Food package is keeping door open.
Move packages that keep door from closing.
- Refrigerator is not level.
Adjust the leveling feet.
- The floor on which the refrigerator is installed may be uneven or the refrigerator may be unstable.
Slightly raise the front side of the refrigerator by turning the leveling feet clockwise.

Interior light does not work

- No power at outlet.
- If the LED lamp does not function, you must contact an authorised service provider or the manufacturer.

No water dispensing

- Water level is too low in Water Tank.
Fill the Water Tank with water. (Approx. 2.3 Lt capacity)

It is normal...

The following occurrences are normal.

	Occurrence	Solution
Noise	When you hear "Tak" or "Took" sound	This is the sound of various parts expanding/contracting or various control devices operating depending on the temperature change within the refrigerator.
	When you hear "Deureureuk~", "Dulkuk" or "Woong" sound	This is the compressor or fan operating when the operation of the refrigerator is starting or ending. This is the same phenomenon of the sound generated when starting or turning off the engine of a car.
	When you hear "Kureureuk" sound of water flowing	This is the sound of refrigerant changing the condition in the freezer/refrigerator. When the liquid changes to gas, you will hear the sound of water flowing and when gas changes to liquid, you will hear the "Kureureuk" sound.
	When you hear the sound of wind such as "Shoo~" or "Shik" right after you close the door	This is the sound generated when the internal pressure is temporarily lowered when the warm air entered through the refrigerator or freezer is rapidly cooled.
	When you hear a vibrating sound	If the refrigerator is installed on wooden floor or wooden wall, or if the refrigerator is not leveled properly, the sound can be loud from the vibration.
	When you hear a loud sound after installing the product for the first time	When you operate the refrigerator for the first time, the refrigerator will operate at high speed to cool fast and the sound can seem louder. When the internal temperature falls below a certain level, the noise will subside.
Door open	When the door is slightly opened after closing the door	Depending on the force or speed of closing the refrigerator or freezer door, the door can open slightly and then close again. Be careful not to close the door too hard.
Icing/ Dew drops	When there is icing or dew drops formed on the inner or outer side of the refrigerator	When warm external air flows into the cool inner surface of the refrigerator, icing/dew drops can be formed. Especially, this will happen more easily when you open and close the refrigerator door more frequently. Also if the humidity of the installed location is high or during the rainy season or on a rainy day, condensation can form on the outer side of the refrigerator. This is a natural phenomenon that occurs during the humid weather. Wipe the condensation with a dry cloth.
Temperature	When the front side of the refrigerator is warm	Heat pipes are installed around the front part of the refrigerator and on the divider of the freezer and refrigerator to prevent condensation from forming. The refrigerator may feel warmer after the installation or during summer, this is not a malfunction and is a normal occurrence.