



SIMPLE MANUAL

LG Wi-Fi

Sound Bar

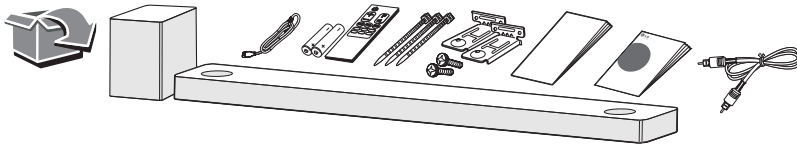
- ENGLISH
- DEUTSCH
- FRANÇAIS
- NEDERLANDS
- ITALIANO
- ESPAÑOL
- EAVHIKKA
- PORTUGUÊS
- SVENSKA
- DANSK
- NORSK
- SUOMI

Please read this manual carefully before operating your set and retain it for future reference. To view the instructions of advanced features, visit <http://www.lg.com> and then download Owner's Manual. Some of the content in this manual may differ from your unit.

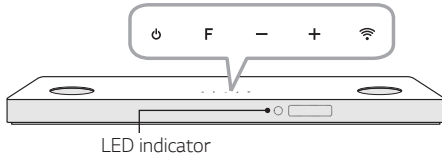
MODEL
SK10Y



www.lg.com
Copyright © 2018 LG Electronics Inc. All Rights Reserved.



Front Panel

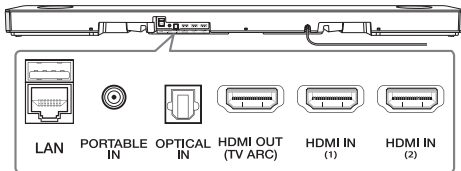


- ⏻ (Standby) Switches the unit ON or OFF.
- F (Function) Selects function
- /+ (Volume) Adjusts volume
- 📶 Selects Wi-Fi function.

LED indicator : Shows connection status.

- White (Blinking): Waiting for network connection on Wi-Fi function
- White (Staying on): Network connection is completed on Wi-Fi function or the other functions are selected.
- White (Dimmed): Standby mode with network connection.
- Red (Staying on): Standby mode without network connection.

Rear Panel



- USB (Service only) S/W download connector.
- LAN Connect to router.
- PORTABLE IN Connect portable device.
- OPTICAL IN Connect to an optical device.
- HDMI OUT (TV ARC) Connect to a TV.
- HDMI IN (1) / HDMI IN (2) .. Connect to device with HDMI OUT.

Subwoofer Connection

Place the wireless subwoofer near the sound bar and follow steps below.

- ❶ Connect the power cord of the sound bar and the wireless subwoofer to the outlet.
- ❷ Turn on the sound bar.
- ❸ The sound bar and wireless subwoofer will be **automatically** connected. The subwoofer's green LED turns on.

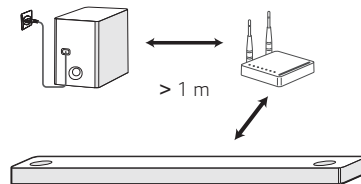
Manually Subwoofer Connection

If the subwoofer does not make sound, try to connect manually.

- ❶ Press **Pairing** button on the rear of the wireless subwoofer.
 - The green LED on the rear of the wireless subwoofer blinks quickly. (If the green LED does not blink, press and hold the Pairing button.)
- ❷ Turn on the sound bar.
- ❸ Pairing is completed.
 - The green LED on the rear of the wireless subwoofer turns on.



Keep the sound bar and the subwoofer away from the device (ex. wireless router, microwave oven, etc.) over 1 m to prevent wireless interference.

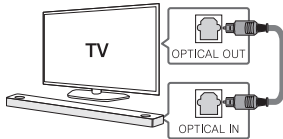


TV Connection

Connect the sound bar and TV using Optical (A) or HDMI ARC (B).

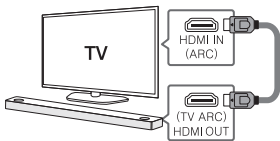
A Optical Connection

- 1 Connect the sound bar to the TV using Optical cable.
- 2 Set up [External Speaker (Optical)] on your TV setting menu.



B HDMI (ARC) Connection

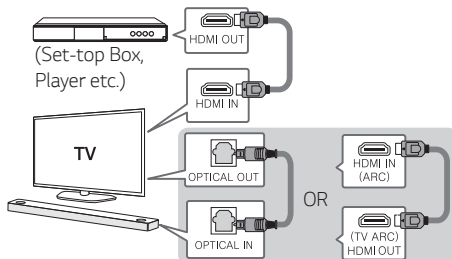
- 1 Connect the sound bar to the TV using HDMI cable.
- 2 Set up [External Speaker (HDMI ARC)] on your TV setting menu.



- HDMI connection is unavailable if your TV does not support HDMI ARC.
- If this unit is connected by OPTICAL and ARC at the same time, the ARC signal is a high priority.

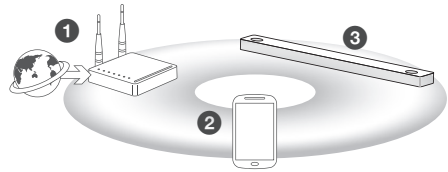
Additional Device Connection

- 1 Connect to the external device like as follow.



- 2 Set the input source by pressing **F** on the remote control or unit repeatedly.

Network Connection



- 1 Check network condition. A router connected to network should be installed.
- 2 Connect your smart device to your home network.
- 3 Connect the sound bar to the power supply.



All devices should be connected to same router.

Download LG Wi-Fi Speaker Application

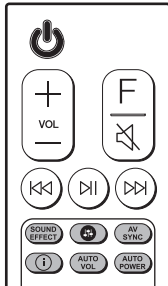
Download "LG Wi-Fi Speaker" on the App Store or Google Play Store.



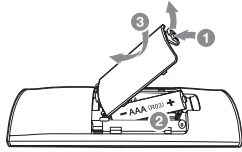
Launch LG Wi-Fi Speaker App

Follow the steps for wired or wireless connection displayed on the screen.

Remote control



Replacement of Battery



SOUND EFFECT: Selects a sound effect mode.

+: Adjusts sound level of each speaker.

AV SYNC: Synchronizes the audio and video.

i: Displays the input source information.

AUTO VOL: Adjusts too loud or low output volume level appropriately.

AUTO POWER: Automatically turns on by an input source.

Additional Information

Specification

Power requirement	Refer to the main label.
Power consumption	Refer to the main label. Networked standby : 6.4 W (If all network ports are activated.)
Dimensions (W x H x D)	Approx. 1443.0 mm x 63.0 mm x 146.0 mm
Amplifier (Total RMS Output power)	550 W RMS

Design and specifications are subject to change without notice.



Rear Speakers Ready

Ready for surround sound with Rear Speakers Kit sold separately. (SPK8-S)

OPEN SOURCE SOFTWARE NOTICE INFORMATION

To obtain the source code under GPL, LGPL, MPL, and other open source licenses, that is contained in this product, please visit <http://opensource.lge.com>.

In addition to the source code, all referred license terms, warranty disclaimers and copyright notices are available for download.

LG Electronics will also provide open source code to you on CD-ROM for a charge covering the cost of performing such distribution (such as the cost of media, shipping, and handling) upon email request to opensource@lge.com.

This offer is valid for a period of three years after our last shipment of this product. This offer is valid to anyone in receipt of this information.

How to disconnect the wireless network connection or the wireless device

Press and hold "Wi-Fi" button until you hear the beep sound once.

Declaration of Conformity



Hereby, LG Electronics declares that the radio equipment type Wi-Fi SOUND BAR is in compliance with Directive 2014/53/EU. The full text of the EU declaration of conformity is available at the following internet address:

<http://www.lg.com/global/support/cedoc/cedoc#>

The use of the 5150 – 5350 MHz band is restricted to indoor use only. This restriction exists in the countries Belgium (BE), Bulgaria (BG), Czech Republic (CZ), Denmark (DK), Germany (DE), Estonia (EE), Ireland (IE), Greece (EL), Spain (ES), France (FR), Croatia (HR), Italy (IT), Cyprus (CY), Latvia (LV), Lithuania (LT), Luxembourg (LU), Hungary (HU), Malta (MT), Netherlands (NL), Austria (AT), Poland (PL), Portugal (PT), Romania (RO), Slovenia (SI), Slovakia (SK), Finland (FI), Sweden (SE), United Kingdom (UK), Switzerland (CH), Iceland (IS), Liechtenstein (LI) and Norway (NO).

For consideration of the user, this device should be installed and operated with a minimum distance of 20 cm between the device and the body.

Frequency range	Output power (Max.)
2402 to 2480 MHz	10 dBm
2412 to 2472 MHz	19 dBm
5180 to 5240 MHz	20 dBm
5730 to 5821 MHz	13 dBm

