



SIMPLE MANUAL

# Home Speaker System

Please read this manual carefully before operating your set and retain it for future reference.  
To view the instructions of advanced features, visit <http://www.lg.com> and then download Owner's Manual. Some of the content in this manual may differ from your unit.

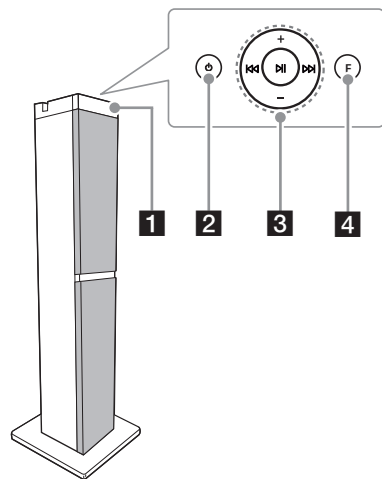
MODEL  
RK1D



[www.lg.com](http://www.lg.com)  
Copyright © 2019 LG Electronics Inc. All Rights Reserved.  
1905\_Rev01

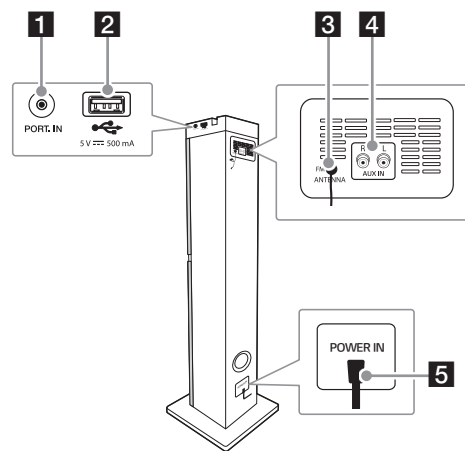


## Top / Front Panel



- 1** Display window
- 2** ⏻ (Standby)  
Turns the power on or off.
- 3** ⏮ / ⏭ (Skip/Search)
  - Skips backward or forward.
  - Searches for a section within a file.
  - Selects the radio stations.
- ⏸ (Play/Pause)
  - Starts or pauses playback.
  - Selects stereo/mono.
- +/-**  
Adjusts speaker volume.
- 4** **F** (Function)  
Selects the function and input source.

## Side / Rear Panel



- 1** **PORT.** (Portable) **IN** jack
- 2** **USB Port**  
You can play sound files by connecting the USB device.
- 3** **FM ANTENNA**
- 4** **AUX IN (L/R)**  
Connect an auxiliary device.
- 5** **POWER IN**

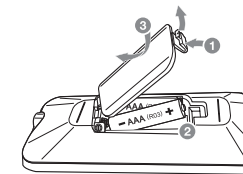
## Additional Information

### Specifications

Power Requirements	Refer to the main label on the unit.
Power Consumption	Refer to the main label on the unit.
Dimensions (W x H x D)	Approx. 235 mm x 947 mm x 250 mm
Bus Power Supply (USB)	5 V  500 mA
Amplifier (Total RMS output power)	60 W RMS

Design and specifications are subject to change without notice.

### Replacement of battery



**POWER:** This unit operates on a mains supply of 200 - 240 V ~, 50 / 60 Hz.

**Wiring:** This unit is supplied with a BS 1363 approved main plug. When replacing the fuse, always use a fuse of the same rating and approved to BS 1362. Never use this plug with the fuse cover omitted. To obtain a replacement fuse cover contact your dealer. If the type of plug supplied is not suitable for the mains sockets in your home, then the plug should be removed and a suitable type fitted. Please refer to the wiring instructions below:

**Warning:** A mains plug removed from the mains lead of this unit must be destroyed. A mains plug with bared wires is hazardous if inserted in a mains socket. Do not connect either wire to the earth pin, marked with the letter E or with the earth symbol or coloured green or green and yellow. If any other plug is fitted, use same rating of fuse in the plug.

**Important:** The wires in this mains lead are coloured in accordance with the following codes:

- **BLUE: NEUTRAL, BROWN: LIVE** - As the colours of the wires in the mains lead of this unit may not correspond with the coloured marking identifying the terminals in your plug, proceed as follows: The wire which is coloured blue must be connected to the terminal which is marked with the letter N or coloured black. The wire which is coloured brown must be connected to the terminal which is marked with the letter L or coloured red.