



OWNER'S MANUAL

One:Quick Share

Screen Mirroring Device

Please read the safety information carefully before using this product.

After reading this manual, keep it in an easily accessible location for future reference.

SC-00DA

www.lg.com

Copyright © 2021 LG Electronics Inc. All Rights Reserved.

TABLE OF CONTENTS

ONE:QUICK SHARE4

- LG Device..... 4

SYSTEM REQUIREMENTS.....5

PRODUCT FEATURES.....7

PREPARING8

- Product Care..... 8
- Installation Guide..... 9
- Parts and Buttons 10

HOW TO USE THE ONE:QUICK SHARE DONGLE 12

- How to Pair LG Devices and the Dongle..... 12
- How to Install the Driver and PC App..... 14
- Manual Installation..... 16
- How to Share the Screen 23
- How to Use the PC App 26

TROUBLESHOOTING..... 39

PRODUCT SPECIFICATIONS... 41

ONE:QUICK SHARE

One:Quick Share is a solution that connects to a PC to allow wireless sharing of image and audio.

One:Quick Share is used for presentations at meetings. The quality of video playback may vary depending on the performance of the PC.

It works with LG devices and can share up to 4 PC screens to LG devices.

The maximum number of screen shares may be limited depending on the type of LG device.

LG Device

For example, when connecting the One:Quick Share dongle to the presenter's laptop for a meeting, you can output the presentation to an LG device.

If each person uses their own One:Quick Share product, multiple people can share their presentation to one LG device.

SYSTEM REQUIREMENTS

Operating System

	Minimum Requirements	Recommended Specifications
Microsoft Windows	Windows 8.1 64 bit or later	Windows 10 V1709 64 bit or later
Apple macOS	10.12.6 (Sierra) or newer	10.15.6 (Catalina) or newer

* On macOS, select [System Preferences] > [Sound] > [Output] > [SoundPusher Audio] to output audio.

Memory

4 Gbyte or higher

CPU

	Minimum Requirements	Recommended Specifications
Intel	Core i 1st (Nehalem) Core i 2nd (Sandy Bridge) Core i 3rd (Sandy Bridge) Core i 4th (Haswell) Core i 5th (Broadwell) Core i 6th (Sky Lake) Core i 7th (Kaby Lake)	Core i 8th (Coffee Lake) Core i 9th (Coffee Lake) Core i 10th (Comet Lake / Ice Lake) Core i 11th (Tiger Lake)
AMD	A Series	Ryzen 1st Ryzen 2nd (Pinnacle, Colfax) Ryzen 2nd (Picasso) Ryzen 3rd (Matisse, Castle Peak) Ryzen 3rd (Renoir)
Screen Sharing Resolution	Up to 1366 x 768 16 fps / Audio	Up to 1920 x 1080 30 fps / Audio

* The One:Quick Share features may not work properly depending on your Windows/ macOS version and PC specifications.

PRODUCT FEATURES

- Share your PC screen easily using buttons by connecting the One:Quick Share Dongle to your PC.
- The One:Quick Share PC app allows you to control the video mode and volume of your LG device.
- Supported control functions may vary depending on the type of LG device. Please refer to the model's manual for detailed instructions.
- If you connect 4 One:Quick Share dongles to each of the 4 PCs and share the screens to an LG device, you can share up to 4 screens simultaneously. The maximum number of screen shares may be limited depending on the type of LG device.

PREPARING

Product Care

- Be careful not to get the product wet. If the product gets wet, there is a risk of a short circuit.
- Wipe gently with a dry cloth to remove dust.
- When cleaning, do not use volatile substances such as thinner, alcohol, or benzene. It may cause damage to the product surface or deteriorate product functionality.
- Do not disassemble, repair, or modify the product on your own. It may cause an accident, such as a fire or an electric shock.
- Do not pull the USB cable of the product.

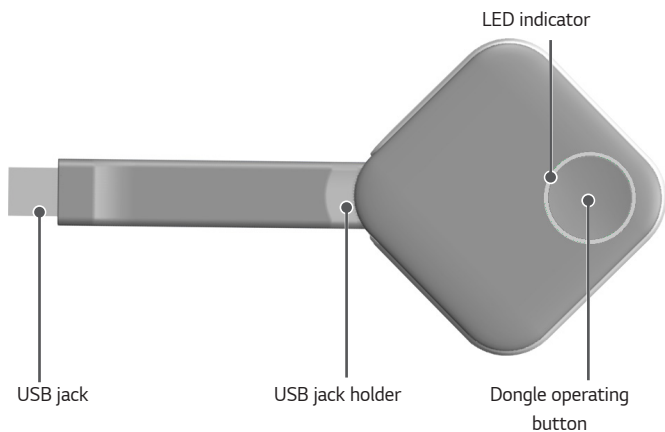
Installation Guide

- Make sure you have enough space for connection before installing the product.
- Do not install the product in a dusty or humid place.
- Do not install the product under direct sunlight or in a hot place.
- Objects containing magnets, such as speakers, may affect the product's operation.
- Be sure to install the product in an environment with normal temperature and humidity. The recommended temperature for installation is 0 °C to 40 °C (32 °F to 104 °F).
- If there is any product nearby that uses strong electromagnetic waves, it may affect the operation of the product.


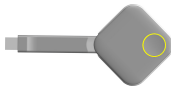

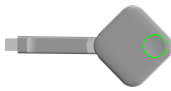

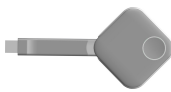


NOTE

- The One:Quick Share model is a USB adapter that is compatible with some LG devices (or products). For more information, refer to the separately sold products in the user manual of the LG device (or product) you purchased.
- Some models are not supported in certain countries.
- Supported models are subject to change without notice.

Parts and Buttons



LED Indicator Status Information

Status	LED indicator		
Standby		Yellow light	
Sharing in Progress		Green light	
Connecting		Gray light	
App Closed / Error		Red light	

- A future update will enable the LED to blink in yellow, indicating that the dongle is connecting to the LG device.

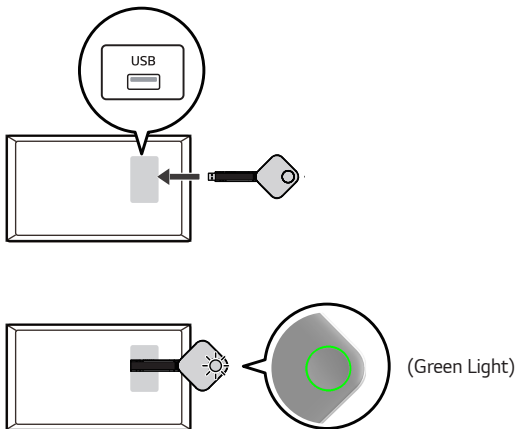
HOW TO USE THE ONE:QUICK SHARE DONGLE

How to Pair LG Devices and the Dongle

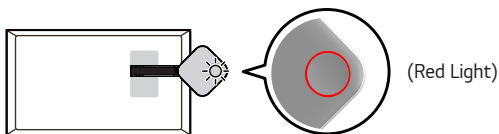
- Connect the One:Quick Share dongle to the LG device's USB port.
- If the LG device displays [Pairing Successful] within about 20 seconds of connection and the dongle's LED turns green, the dongle is normally set to the LG device information.

1

Pairing Successful



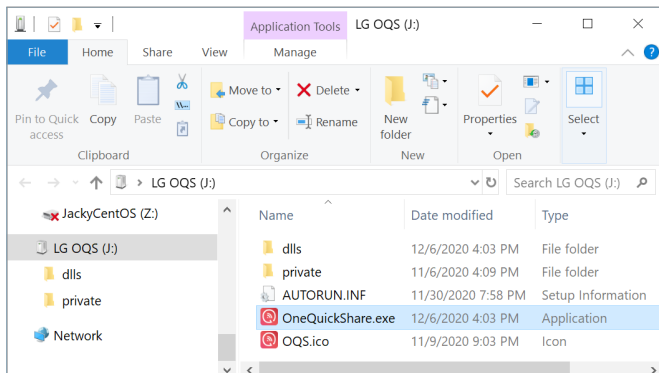
2 Pairing Failed



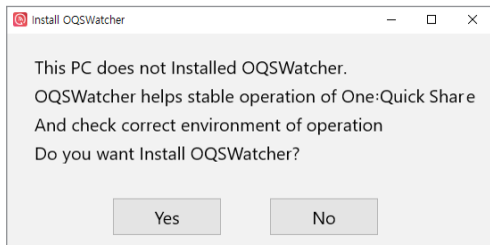
* If the dongle's LED turns red after about 20 seconds of connection, try connecting the dongle to the LG device's USB port a few times and if the LED is still red, contact the store where you purchased it.

How to Install the Driver and PC App

- When you connect the Dongle to your PC, it will be recognized as a storage device and will appear as the LG OQS drive in the Explorer.



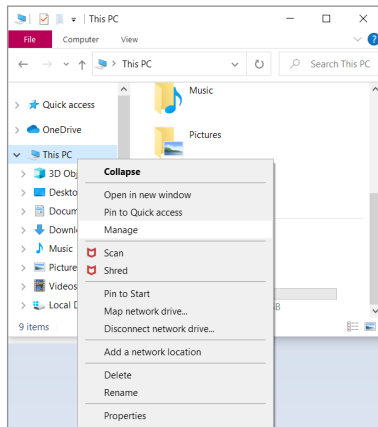
- When you run the OneQuickShare.exe file in the Explorer window, an installation message appears.



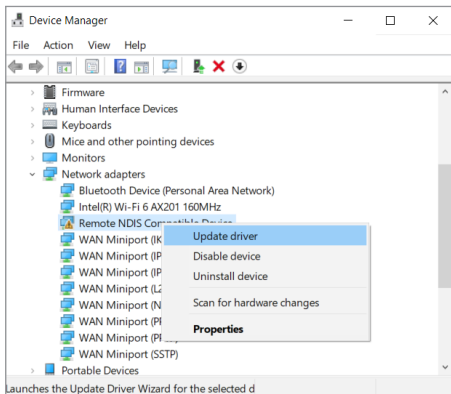
- Click the [Yes] button to automatically install the drivers and PC app.
- Depending on the OS version and PC specifications, the installation time may vary.
- Installation may not be possible if the virus and threat protection settings are turned on in the security settings supported by the OS. Please turn the related settings off temporarily before installing the app.
- Certain anti-virus programs installed on the PC may prevent the app from being installed. Please turn the related settings off temporarily before installing the app.
- macOS may prompt the user for permission to screen capture. Permission is necessary for the PC app to function normally.

Manual Installation

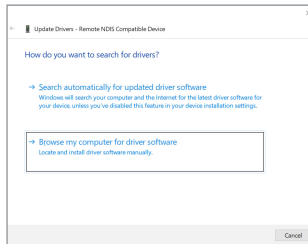
- In a PC environment with enhanced security, the dongle may not install automatically, even if connected to the PC. In this case, install the PC app and driver as follows:
 - Connect the dongle to your PC and wait approximately 20 seconds.
 - Right-click "This PC" in the Windows Explorer window, select the "Manage" option, and run "Device Manager".



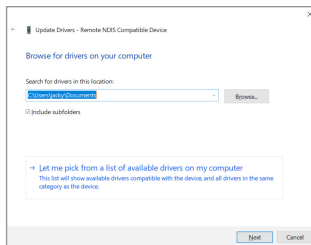
- Right-click "Remote NDIS Compatible Device (OQS RNDIS Driver)", which is marked as an uninstalled device, and select "Update driver".



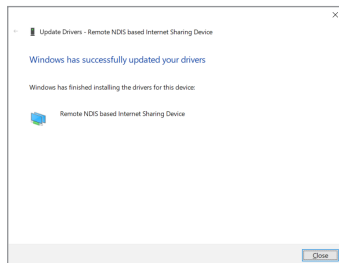
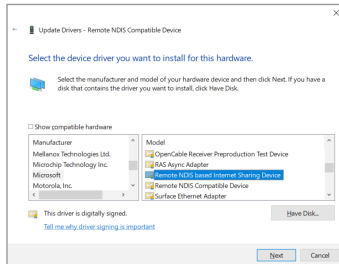
- Click "Browse my computer for driver software".



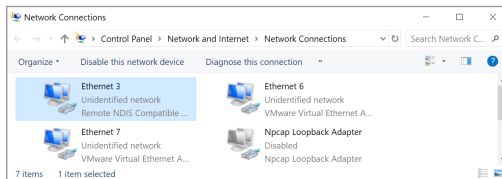
- Click "Let me pick from a list of available drivers on my computer".



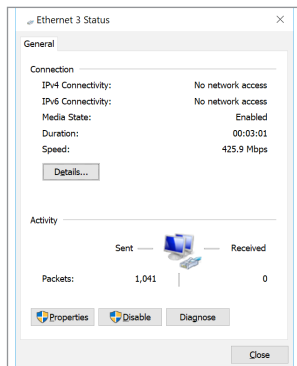
- Uncheck "Show compatible hardware" and select "Microsoft" - "Remote NDIS based Internet Sharing Device" to update.



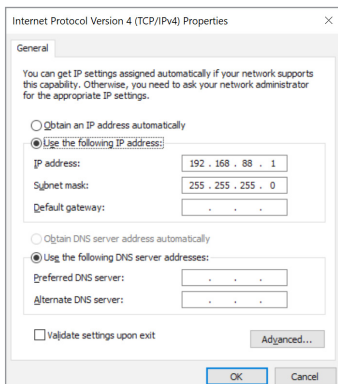
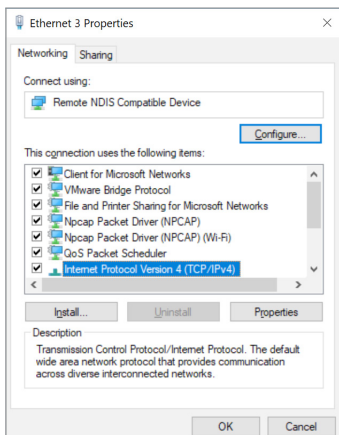
- The NDIS driver installed above is displayed as an adapter in the "Network and Internet" menu.



- Double-click the NDIS Adapter to show the Properties menu.

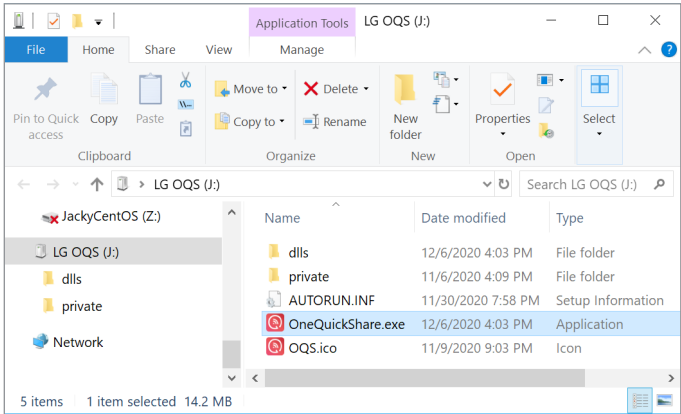


- Select the Internet Protocol Version 4 option and set the IP address to 192.168.88.1.



- For more details on network settings, please refer to the Help section of the relevant operating system.
- Remove the dongle from your PC and reconnect it. After a while, the dongle will be recognized as a storage device in the Explorer window.

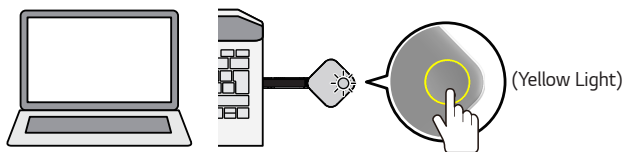
- Running the OneQuickShare.exe file in the Explorer window will manually install the PC app.



- If the app is already installed on the PC, it will be ready to start screen sharing.

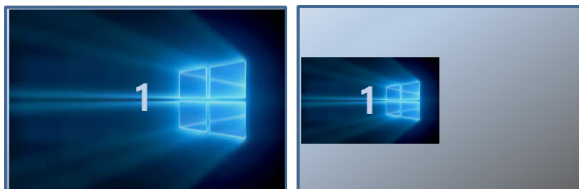
How to Share the Screen

- Connecting the dongle to the PC while the LG device's [SoftAP] settings have been turned on will cause the LED to turn yellow within about 30 seconds to indicate standby mode for screen sharing. Force quitting the PC app will cause the LED to turn red, indicating that the app has been closed. SoftAP setting methods may vary depending on the type of LG device. Please refer to the model's manual for detailed instructions.
- Pressing the button on the dongle (or the [Share] button on the automatically run PC app menu), will show the PC screen on the LG device screen, and the dongle's LED will turn green to indicate the sharing status. If you force quit the PC app in this state, the LED will turn red to indicate that the app is closed.

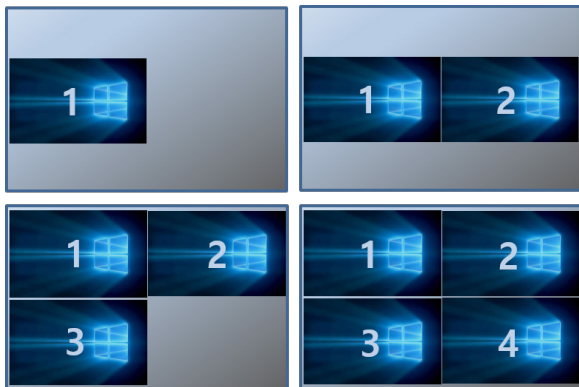


- When the dongle is attempting to connect to the LG device, the dongle's LED will be off (blinking yellow afterward) to indicate this.
- If the PC app has been closed or if the app is not running, the LED will turn red, indicating a problem.
- If the dongle's LED remains off (blinking yellow afterward), make sure that the [SoftAP] setting on the LG device is turned on. Please refer to the model's manual for detailed instructions on LG device settings.

- Pressing the button on the dongle for 2 seconds or longer while the screen is shared will switch the LG device to the multi-screen share mode. The multi-screen share mode may not be supported depending on the type of LG device.



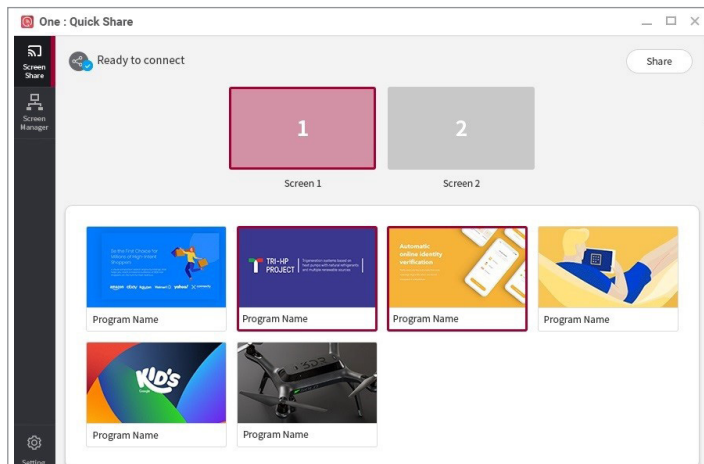
- In the multi-screen share mode, pressing the dongle button on a non-shared PC will share 2 screens to the LG device. Pressing the dongle button on another PC will allow you to share the screens of up to 4 PCs to the LG device depending on the type of LG device. The maximum number of screen shares may be limited depending on the type of LG device.



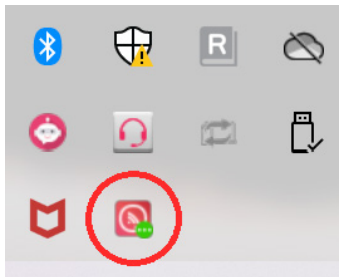
- During the multi-screen share mode, pressing the button on the shared dongle for 2 seconds or longer will switch the LG device to full-screen mode and the corresponding dongle's screen is shared.
- If you press the button on the Dongle (or the [Stop Sharing] button on the PC app menu) while the screen is being shared, screen sharing is turned off.

How to Use the PC App

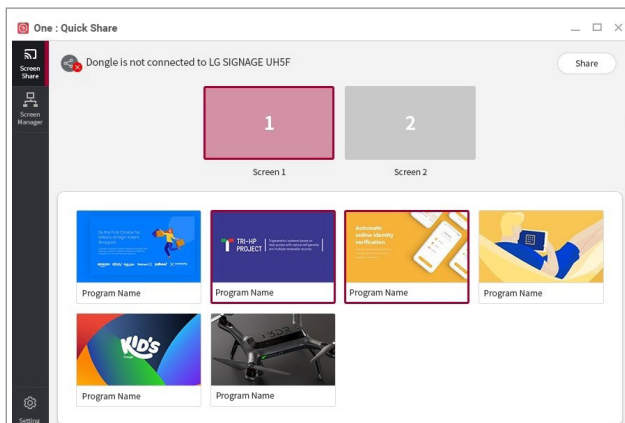
- When the dongle is connected to the PC, the PC app menu screen automatically appears on the PC screen.
- This is the PC app menu screen with the dongle normally connected to the LG device and PC app.



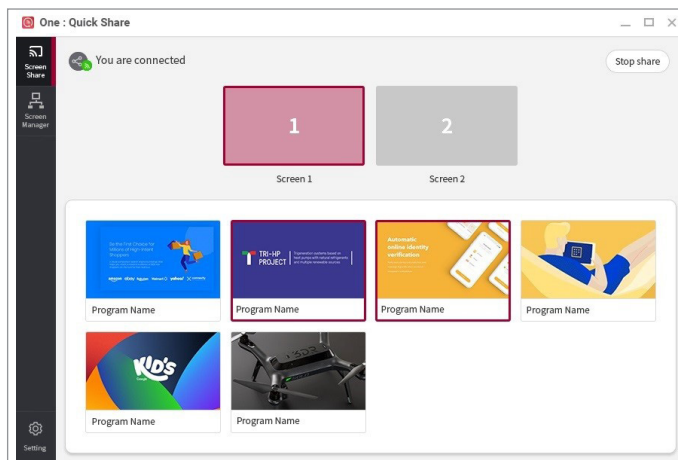
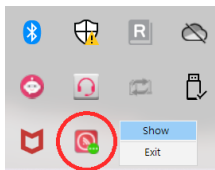
- Pressing the [Share] button in the upper right corner of the menu will display the PC screen on the LG device screen and the app disappears into the system tray.



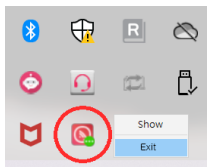
- If connected unsuccessfully, the [Ready to Connect] message is displayed as [Dongle is not connected to *]. In this case, check that the [SoftAP] setting of the LG device is turned on. If you still see the same message, try connecting the dongle again. Please refer to the model's manual for detailed instructions on LG device settings.



- Right-click the app icon located on the system tray and select the [Show] option to show the PC app menu on the screen.

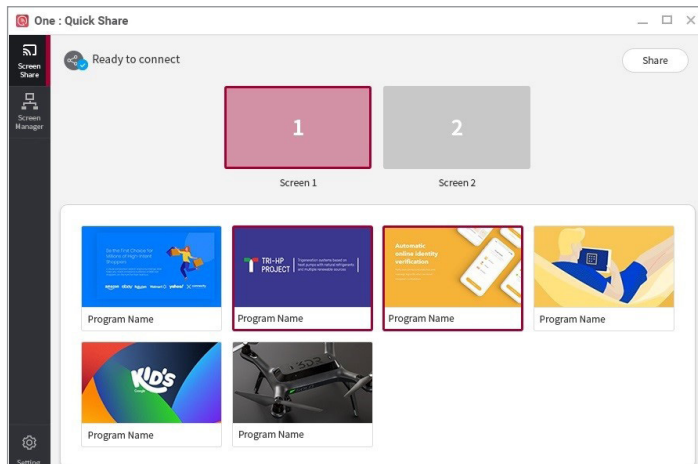


- When finished using the dongle, select and right-click the app icon located in the tray icon, and select [Exit] to exit the PC app. The dongle can then be safely removed from the PC.



Screen Sharing Menu in the PC App

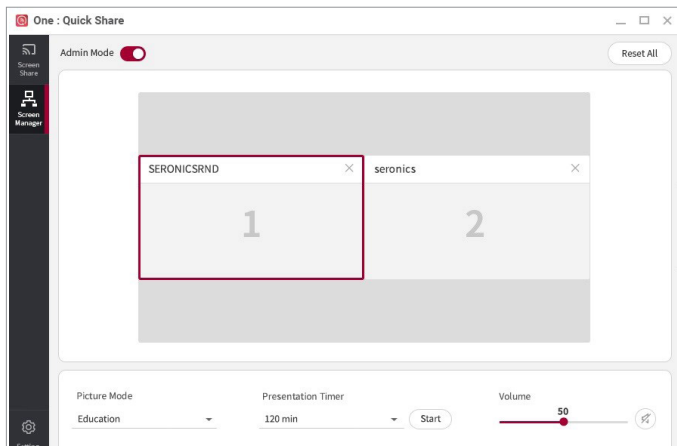
- The icons and messages in the screen-sharing menu indicate the current connection and operation status.
- Pressing the [Share] button in the upper right corner will share the PC screen to the LG device, and pressing the [Stop Sharing] button will stop the sharing.



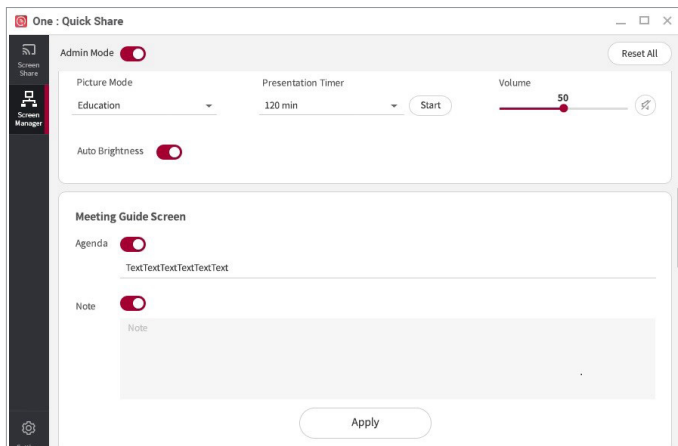
- In the upper pane of the menu, you can select the screen on the PC to which the Dongle is connected.
- Currently running programs are displayed at the bottom of the menu, and the desired programs can be selected.
- If a running program is minimized on the task bar, it does not appear on the program list.
 - macOS does not support program sharing.
 - Depending on the OS version, the preview screen for running programs may not be supported.
- When sharing a program, selecting the program and pressing the [Share] button will automatically change the program to the full-screen size, and the screen is shared on the LG device screen.
- When sharing a program, there may be no indication on the LG device screen depending on the type of program.
 - Updating to a newer version with the extended screen enables the user to share the desired program using the extended screen. This feature may not be supported, depending on the OS version.
 - Changing the PC resolution while in [You are connected] mode may cause screen sharing to not work normally.

[Screen Manager] Menu in the PC App

- This is the [Screen Manager] menu screen.



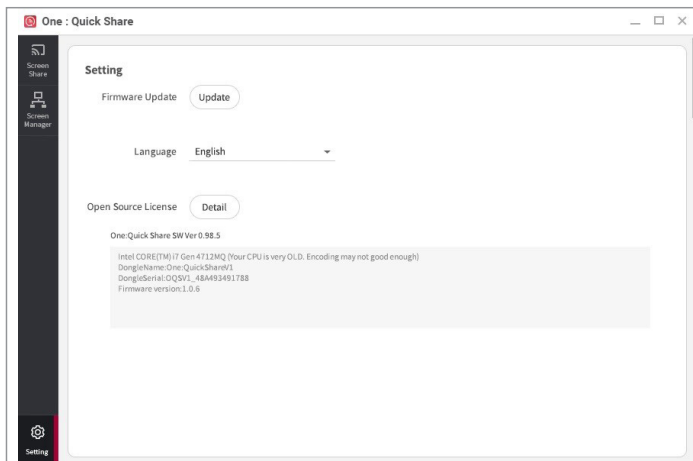
- [Admin Mode]
 - If you are the host of the meeting, you can set the screen to share in [Admin Mode]. You can also make settings for [Picture Mode], [Presentation Timer], and [Volume] as well as [Agenda] and [Note] for LG device in the [Meeting Guide Screen] menu. Supported control functions may vary depending on the type of LG device. Please refer to the model's manual for detailed instructions.
- [Reset All]
 - In [Admin Mode], terminate connections to all PCs screen sharing with LG device, and reset settings data on the Admin Mode menu.
- Shared Screens Area
 - Information on the PC screens being shared is displayed in two rows and two columns, and can be rearranged by dragging and dropping.
 - Clicking the Exit (X) button in the top right corner of a PC screen that is being shared will turn off the screen sharing function for that screen.
 - While a screen is being shared in full screen mode on LG device, clicking the [Split screen] button (the first icon at the top) switches to a multi-screen mode in which other PC screens can be shared. Clicking the [Share] button from a PC screen that is not being shared will display two screens, and clicking the [Share] button from another PC will allow up to four PC screens to be shared. The maximum number of screen shares may be limited depending on the type of LG device.
 - If multiple screens are being shared on LG device, click the [Maximize] button (the first icon at the top of the PC screen) to display the screen in full screen mode on LG device.



- [Picture Mode]
 - The picture mode for the LG device screen can be set.
- [Auto Brightness]
 - You can set the level of the automatic brightness of the LG device screen.
- [Presentation Timer]
 - The presentation time for the presenter can be set.
- [Volume]
 - You can adjust the speaker volume of your LG device.
 - Click the speaker icon to mute the speaker.
- [Meeting Guide Screen]
 - [Agenda] and [Note] can be set to display the conference information on the LG device screen before the meeting begins.

PC App Setting Menu

- This is the PC App setting menu.



- [Firmware Update]
 - The dongle and PC app can be updated.
 - Download the latest SC-00DA firmware from <https://www.lg.com/global/business/commercial-display/business-resources/software-download>.
 - The downloaded firmware can be installed by clicking the [Update] button on the PC app.
 - Never disconnect the dongle from the PC during an update.

- [Language]
 - The preferred language can be selected.
- [Open Source License]
 - Information regarding compliance to various open sources which have been applied for product development is displayed.
- PC App version
 - PC app version information can be checked.

TROUBLESHOOTING

When the PC screen connected to the dongle cannot be shared

- Check if the dongle has been correctly inserted into the USB port of the PC.
- Check if the [SoftAP] settings have been switched to ON in the LG device's [Network] menu. For more details on LG device settings, please refer to the user manual of the relevant model.
- If there are other wireless devices around LG device, they may interfere with communication.
- The screen sharing function of the dongle will not work when a PC's screen saving or logout functions are enabled. Disable these features if expecting to be screen sharing for a longer amount of time.

The video is delayed or the audio stops momentarily

- Image and audio output may not work properly on a PC whose specifications are too low or whose OS version is too old. Please refer to the system requirements section.
- If there is another wireless device in the vicinity of the product, it may interfere with communication and cause problems in the image and audio output.
- Place LG device and the PC you are sharing the screen from close to each other and try again.
- If there are other wireless devices around LG device, they may interfere with communication.

No video output

- Check if a graphic card has been installed on the PC to which the Dongle is connected. (Image output may not work properly for desktops if an additional graphic card has also been installed.)

No sound output

- Check if the sound card is set correctly on the PC to which the Dongle is connected. (If your PC is a desktop, the speaker must be connected to the PC for the sound card to work properly.)

Error description

- Cannot detect USB Dongle
 - Check if the dongle has been properly connected to the PC.
 - If the same message is displayed even after reconnecting the Dongle to the PC, contact the store in which you purchased it.
- Connection error has occurred with <LG device Name>
 - Check if the [SoftAP] settings have been switched to ON in the LG device's [Network] menu. For more details on LG device settings, please refer to the user manual of the relevant model.
 - If there are other wireless devices near LG device, they may interfere with communication.

PRODUCT SPECIFICATIONS

Product specifications are subject to change without prior notice for quality improvement purposes.

Model	SC-00DA	
Dimensions (Width x Height x Depth)	63.8 mm x 63.8 mm x 13.5 mm (2.5 inches x 2.5 inches x 0.5 inches) (USB cable 85.5 mm (3.3 inches))	
Weight	46 g (0.1 lbs)	
Power Supply	5 V DC (500 mA)	
Power Consumption	Maximum: 2.5 W Typical: 2 W	
Interface	USB 2.0	
Security	WPA2	
Environmental Conditions	Operating Temperature	0 °C to 40 °C (32 °F to 104 °F)
	Storage Temperature	-20 °C to 60 °C (-4 °F to 140 °F)
	Storage Humidity	0 % to 90 %

- This product is intended for connection to USB port source complying with requirement of limited power source ANNEX Q in IEC/EN 62368-1.

Supplier's Declaration of Conformity

Trade Name	LG
Responsible Party	LG Electronics USA, Inc.
Address	111 Sylvan Avenue, North Building, Englewood Cliffs, NJ 07632
E-mail	lg.environmental@lge.com



The model and serial number of the product are located on the back and on one side of the product. Record them below in case you ever need service.

MODEL

SERIAL NO.

Temporary noise is normal when powering ON or OFF this device.