



ENGLISH

DEUTSCH

FRANÇAIS

ITALIANO

ESPAÑOL

SIMPLE MANUAL

Wireless Sound Bar

Please read this manual carefully before operating your set and retain it for future reference.

To view the instructions of advanced features, visit <http://www.lg.com> and then download Owner's Manual. Some of the content in this manual may differ from your unit.

MODEL
SK4D



MFL70585655

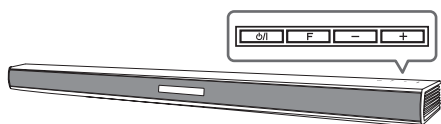
www.lg.com

Copyright © 2018-2019 LG Electronics Inc. All Rights Reserved.
1904_Rev03



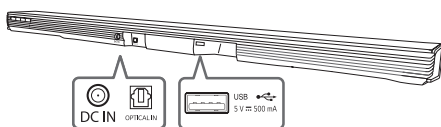
Front Panel

The buttons are located on the rear.



	Standby / On
	Selects Function
	Adjusts Volume

Rear Panel



DC IN	Connect to the AC adapter
OPTICAL IN	Connect to an Optical device
USB	Connect to a USB device



If the optical cable is not connected in the correct direction, it may cause damage of optical jack.

1 Subwoofer Connection

Place the wireless subwoofer near the sound bar and follow steps below.

- 1 Connect the power cord of the sound bar and the wireless subwoofer to the outlet.
- 2 Turn on the sound bar.
- 3 The sound bar and wireless subwoofer will be **automatically** connected. The subwoofer's yellow green LED turns on.

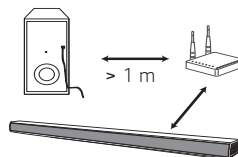
Manual Subwoofer Connection

If the subwoofer does not make sound, try to connect manually.

- 1 Press **PAIRING** button on the rear of the wireless subwoofer.
 - The yellow green LED on the front of the wireless subwoofer blinks quickly. (If the yellow green LED does not blink, press and hold the **PAIRING** button.)
- 2 Turn on the sound bar.
- 3 Pairing is completed.
 - The yellow green LED on the front of the wireless subwoofer turns on.

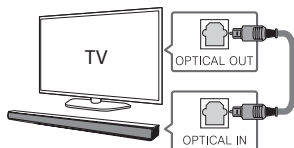


Keep the sound bar and the subwoofer away from the device (ex. wireless router, microwave oven, etc.) over 1 m to prevent wireless interference.



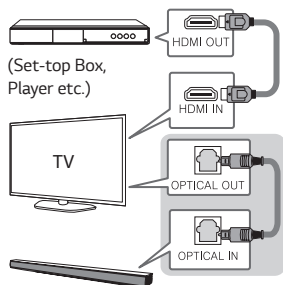
2 TV Connection

- 1 Connect the sound bar to the TV using Optical cable.
- 2 Set up [External Speaker (Optical)] on your TV setting menu.



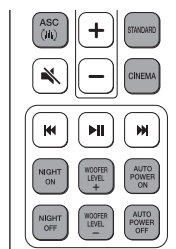
Additional Device Connection

- 1 Connect to the external device as follows.



- 2 Set the input source by pressing F repeatedly.

Remote control



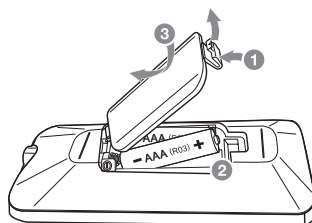
ASC/STANDARD/CINEMA: Selects the sound effect.

NIGHT ON/OFF: Turns down the volume at night.

WOOFER LEVEL +/-: Adjusts the volume level of subwoofer.

AUTO POWER ON/OFF: Automatically turns on by an input source.

Replacement of battery



Additional Information

Specification

Power consumption	Refer to the main label. Networked standby : 0.5 W (If all network ports are activated.)
AC adapter	<ul style="list-style-type: none"> Model : DA-38A25 Manufacturer : Asian Power Devices Inc. Input : 100 - 240 V ~ 50 - 60 Hz Output : 25 V $\overline{\text{---}}$ 1.52 A
Dimensions (W x H x D)	Approx. 890.0 mm x 53.0 mm x 85.0 mm Without foot
Bus Power Supply (USB)	5 V $\overline{\text{---}}$ 500 mA
Amplifier (Total RMS Output power)	300 W RMS

Design and specifications are subject to change without notice.

How to disconnect the wireless network connection or the wireless device

Set up the AUTO POWER ON/OFF function to off and turn off the unit.

Declaration of Conformity



Hereby, LG Electronics declares that the radio equipment type Wireless Sound Bar is in compliance with Directive 2014/53/EU. The full text of the EU declaration of conformity is available at the following internet address:

<http://www.lg.com/global/support/cedoc/cedoc#>

For consideration of the user, this device should be installed and operated with a minimum distance of 20 cm between the device and the body.

Frequency range	Output power (Max.)
2402 to 2480 MHz	10 dBm
5730 to 5821 MHz	13 dBm