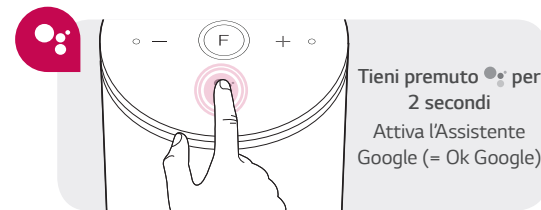
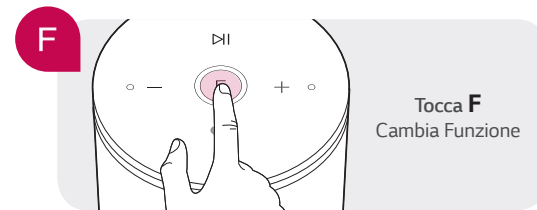
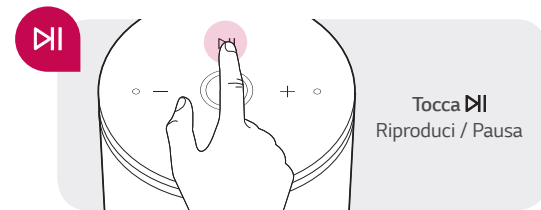
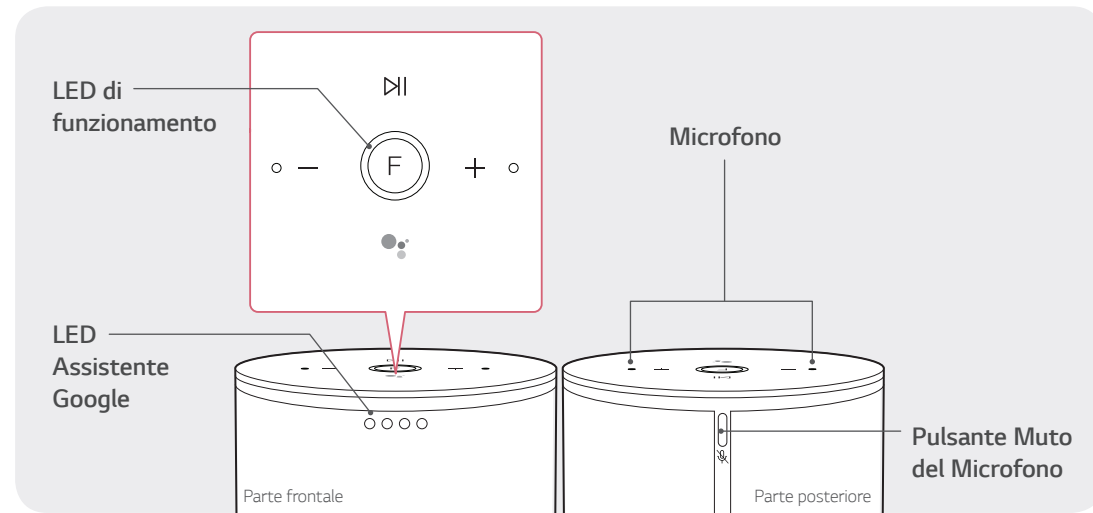


Operazioni di base



Get Started with **WK7**



Step 01

Connect the AC adapter

After connecting the AC adapter, the speaker starts booting. Then Function LED rotates for tens of seconds (Approx. 30 ~ 50 seconds) during booting.

Step 02

Install "Google Home" App

Download the Google Home App from the Google Play or App Store.

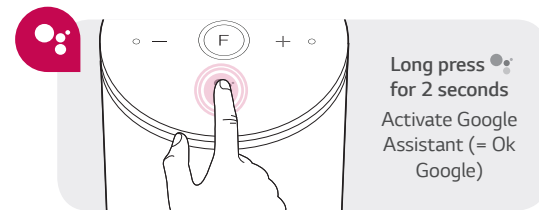
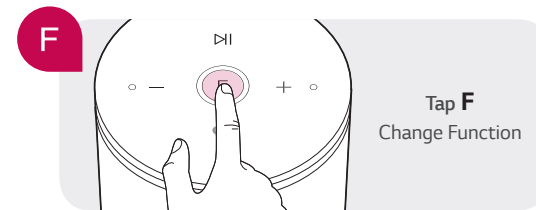
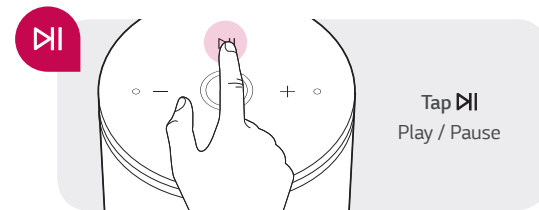
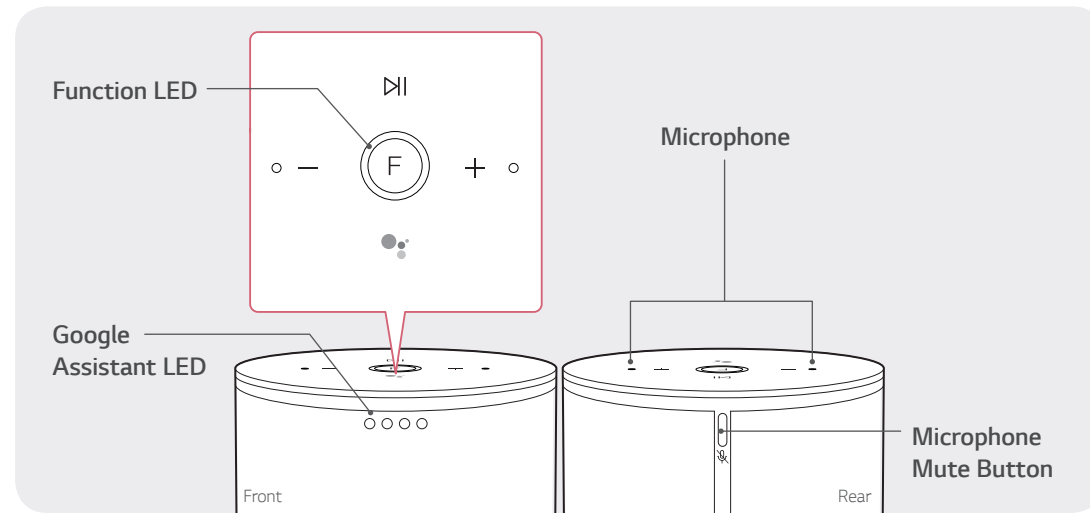
Step 03

Set up the Wi-Fi connection

Launch the "Google Home" app and Follow the steps for Wi-Fi connection on the app.

- ① Quick set up
Activate Bluetooth function on smart device → Follow the steps on app → Set up Wi-Fi connection faster

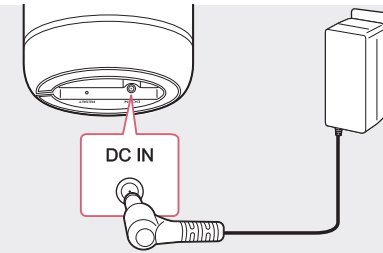
Basic Operation



Inizia con **WK7**



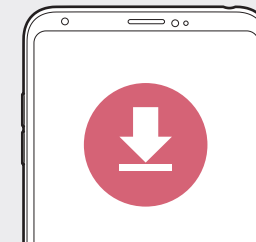
Passo
01



Connettere l'adattatore AC

Dopo aver connesso l'adattatore AC, l'altoparlante viene avviato. Poi, il LED di funzionamento ruota per qualche decina di secondi (ca. 30 ~ 50 secondi) durante la fase di avvio.

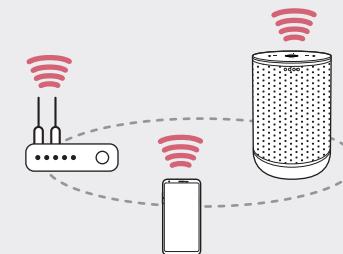
Passo
02



Installa l'App "Google Home"

Scarica l'App Google Home da Google Play o dall'App Store.

Passo
03



Configurare la connessione Wi-Fi

Apri l'app "Google Home" e Segui i passaggi per la connessione Wi-Fi sull'app.

- ① Configurazione rapida
Attiva la funzione Bluetooth sullo smart device → Segui i passaggi sull'app → Configura più velocemente la connessione Wi-Fi