

# Owner's Manual

## IPS LED MONITOR

## LED LCD MONITOR

## (LED MONITOR\*)

\*LG LED Monitors are LCD Monitors with LED Backlighting.

Please read this manual carefully before operating your set and retain it for future reference.

### IPS LED(LED LCD) MONITOR MODEL

19M37A	20M37A	22M37A	24M37A	27M37D
19M37D	20M37D	22M37D	24M37D	27MP37HQ
19M37H	20M37H	22M37H	24M37H	27MP37VQ
	20MP37A	22M37HQ	24M37HQ	27MC37HQ
		22MC37D	24MC37D	27MP36HQ

# CONTENTS

## 3 LICENSE

---

## 4 ASSEMBLING AND PREPARING

---

- 4 Unpacking
- 6 Parts and buttons
- 7 Moving and Lifting the Monitor
- 8 Setting up the Monitor set
  - 8 - Attaching the Stand Base
  - 9 - Detaching the Stand Base
  - 10 - Mounting on a table
  - 10 - Using the cable holder
  - 12 - Mounting on a wall

## 13 USING THE MONITOR SET

---

- 13 Connecting to a PC
  - 13 - D-SUB connection
  - 13 - DVI-D connection
  - 14 - HDMI connection
- 14 Connecting to AV Devices
  - 14 - HDMI connection
- 15 Connecting to External Devices
  - 15 - Peripheral device connection

## 16 CUSTOMIZING SETTINGS

---

- 17 Customizing Settings
  - 17 - Menu Settings
  - 19 -Picture
  - 20 -Color
  - 21 -Display
  - 21 -Audio
  - 22 -Others
- 23 READER Setting
- 24 FUNC. Setting
  - 24 -SMART ENERGY SAVING
  - 25 -Picture Mode

- 26 -Color wizard
- 27 -DUAL DISPLAY
- 27 -DUAL WEB

## 28 TROUBLESHOOTING

---

## 30 SPECIFICATIONS

---

- 40 Preset Modes (Resolution)
- 41 Indicator

## 42 PROPER POSTURE

---

- 42 Proper posture for using the Monitor set.

19M37H 20M37H 22M37H 22M37HQ 24M37H 24M37HQ 27MP37HQ 27MP37VQ  
27MC37HQ 27MP36HQ

## LICENSE

Each model has different licenses. Visit [www.lg.com](http://www.lg.com) for more information on the license.



The terms HDMI and HDMI High-Definition Multimedia Interface, and the HDMI logo are trademarks or registered trademarks of HDMI Licensing LLC in the United States and other countries.

The following content is only applied to the monitor which is sold in Europe market and which needs to meet the ErP Directive:

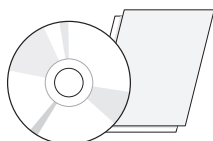
\*This monitor is set to be turned off automatically in 4 hours after you turned on display if there is no adjustment to display.

\*To make this setting be disabled, change the option to 'Off' in OSD menu of "Automatic Standby".

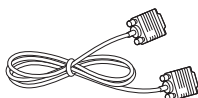
# ASSEMBLING AND PREPARING

## Unpacking

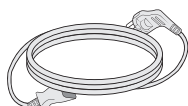
Check your product box for the following items. If there are any missing accessories, contact the local dealer where you purchased your product. The illustrations in this manual may differ from the actual product and accessories.



**CD(Owner's Manual) /  
Card**

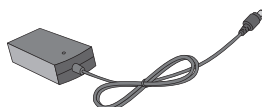


**D-SUB Cable**  
( This cable is not included in all  
countries. )



**Power Cord**

( Depending on the country )

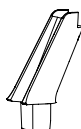


**AC-DC Adapter**

or



**AC-DC Adapter**  
( Depending on the country )

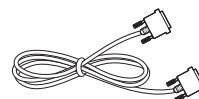


**Stand Body**



**Stand Base**

19M37A	20M37A	22M37A	24M37A	20MP37A	
19M37D	20M37D	22M37D	24M37D	22MC37D	24MC37D
19M37H	20M37H	22M37H	24M37H	22M37HQ	24M37HQ



**DVI-D Cable**

19M37D	20M37D	22M37D	22MC37D
24M37D	24MC37D	27M37D	27MP37VQ

( This cable is not included in all  
countries. )



**Stand Body**



**Stand Base**

27M37D	27MP37HQ	27MP37VQ	27MC37HQ	27MP36HQ
--------	----------	----------	----------	----------



**HDMI Cable**

19M37H	20M37H	22M37H
22M37HQ	24M37H	24M37HQ
27MP37HQ	27MP37VQ	27MC37HQ
27MP36HQ		

( This cable is not included in all  
countries. )



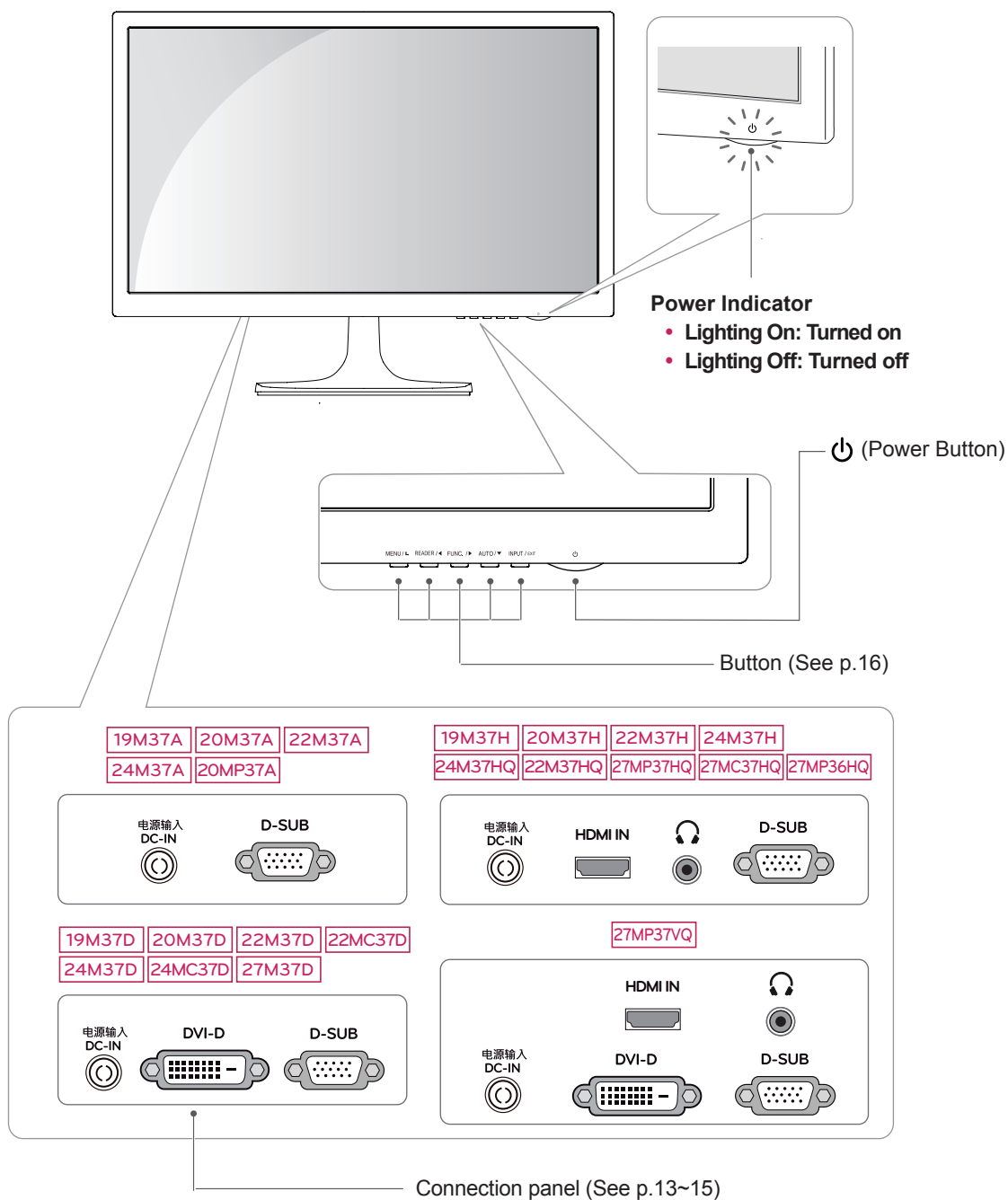
**CAUTION**

- Do not use any unapproved accessories to ensure the safety and product life span.
- Any damages or injuries by using unapproved accessories are not covered by the warranty.

**NOTE**

- The accessories supplied with your product may vary depending on the model.
- Product specifications or contents in this manual may be changed without prior notice due to upgrade of product functions.

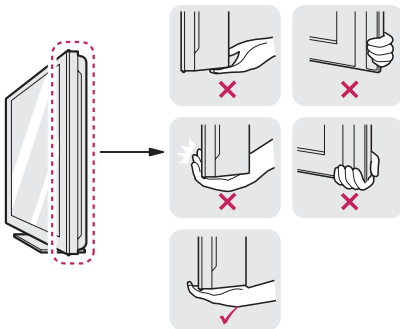
## Parts and buttons



## Moving and Lifting the Monitor

When moving or lifting the monitor, follow these instructions to prevent the monitor from being scratched or damaged and to ensure safe transportation regardless of its shape or size.

- It is advisable to place the monitor in the original box or packing material before attempting to move it.
- Before moving or lifting the monitor, disconnect the power cord and all cables.
- Hold the top and bottom of the monitor frame firmly. Do not hold the panel itself.



- When holding the monitor, the screen should face away from you to prevent it being scratched.

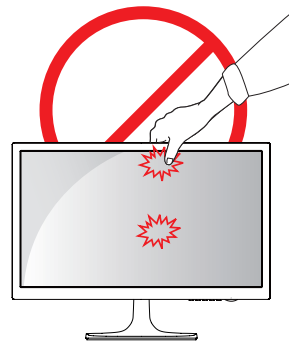


- When moving the monitor, avoid any strong shock or vibrations to the product.
- When moving the monitor, keep it upright, never turn the monitor on its side or tilt it sideways.



### CAUTION

- As far as possible, avoid touching the monitor screen. This may result in damage to the screen or some of the pixels used to create images.



## Setting up the Monitor set

### Attaching the Stand Base

- 1 Place the Monitor set with the screen side down on a flat and cushioned surface.



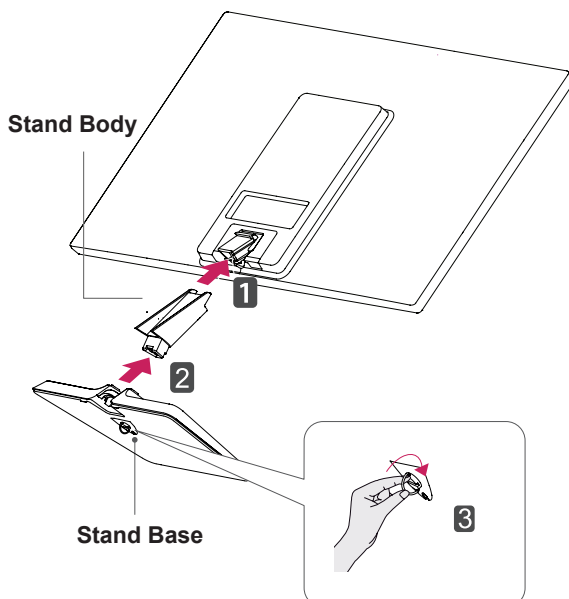
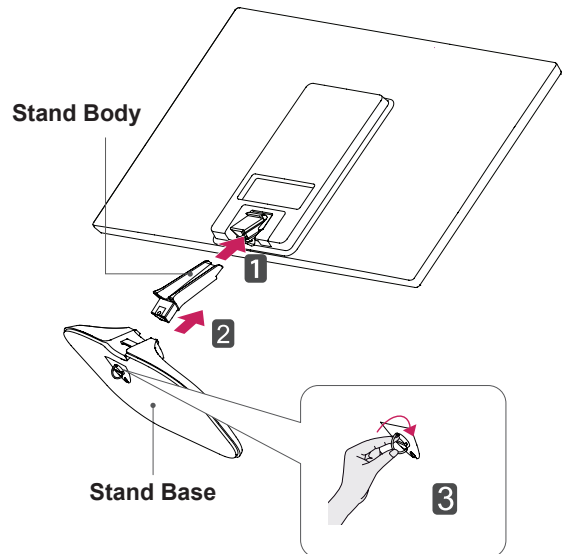
#### CAUTION

Lay a foam mat or soft protective cloth on the surface to protect the screen from damage.

- 2 **1** Attach the **Stand Body** to the monitor set.
- 2** Attach the **Stand Base**.
- 3** Tighten the screw to the right.

19M37A	20M37A	22M37A	24M37A
19M37D	20M37D	22M37D	24M37D
19M37H	20M37H	22M37H	24M37H
	20MP37A	22M37HQ	24M37HQ
		22MC37D	24MC37D

27M37D 27MP37HQ 27MP37VQ 27MC37HQ  
27MP36HQ

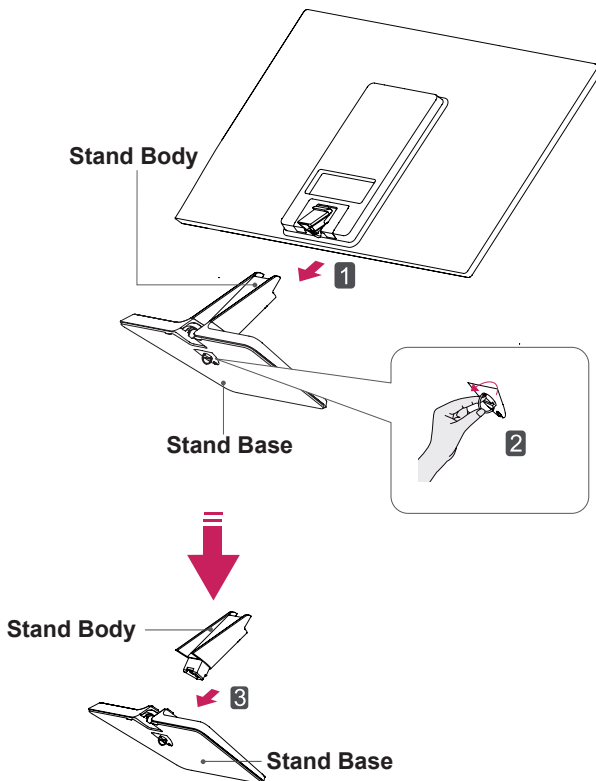


## Detaching the Stand Base

- 1 Place the Monitor set with the screen side down on a flat and cushioned surface.

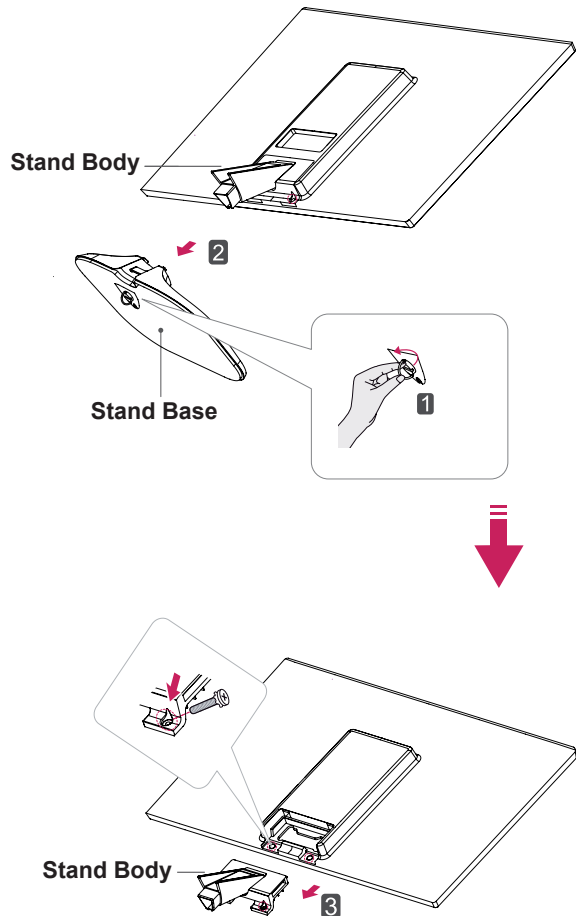
2	19M37A	20M37A	22M37A	24M37A
	19M37D	20M37D	22M37D	24M37D
	19M37H	20M37H	22M37H	24M37H
		20MP37A	22M37HQ	24M37HQ
			22MC37D	24MC37D

- 1 Pull out the **Stand Body** and **Stand Base** from the monitor set.
- 2 Turn the screw to the left.
- 3 Pull out the **Stand Base**.



27M37D 27MP37HQ 27MP37VQ 27MC37HQ  
27MP36HQ

- 1 Turn the screw to the left.
- 2 Pull out the **Stand Base** from the **Stand Body**.
- 3 Remove two screws and pull out the **Stand Body** from the monitor set.

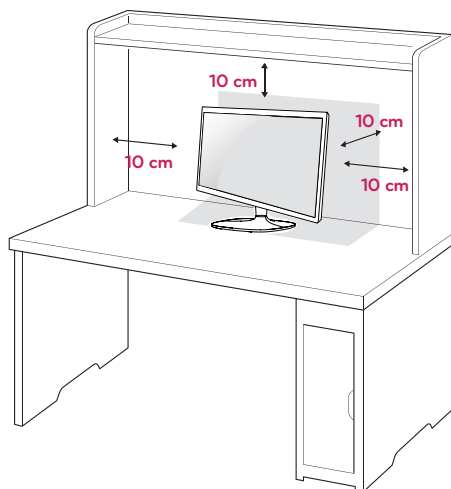


### CAUTION

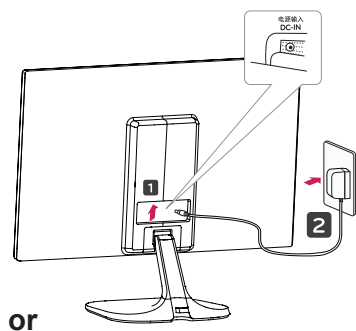
- This illustration depicts the general model of connection. Your monitor may differ from the items shown in the picture.
- Do not carry the product upside down holding only the stand base. The product may fall and get damaged or injure your foot.

## Mounting on a table

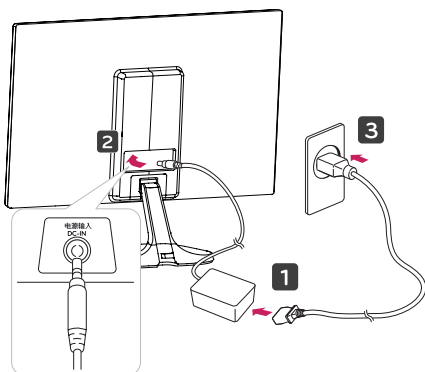
- 1 Lift and tilt the Monitor set into its upright position on a table.  
Leave a 10 cm (minimum) space from the wall for proper ventilation.



- 2 Connect the AC-DC Adapter and Power Cord to a wall outlet.



or



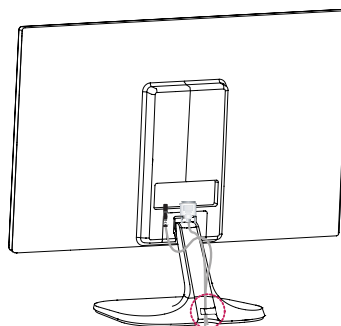
- 3 Press  (Power) button on the bottom switch panel to turn the power on.



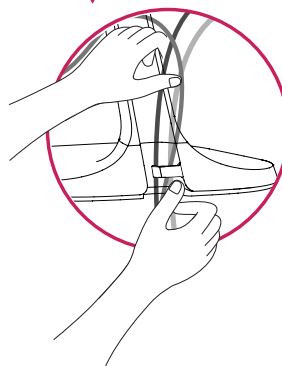
### CAUTION

Unplug the power cord before moving the Monitor to another location. Otherwise electric shock may occur.

## Using the cable holder

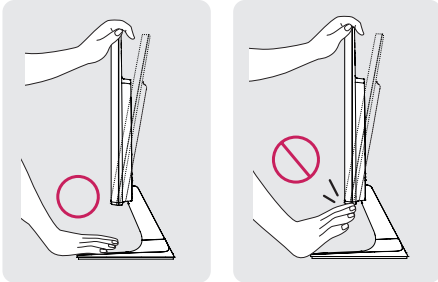


Cable holder

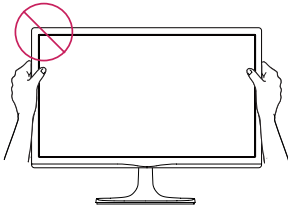


**! WARNING**

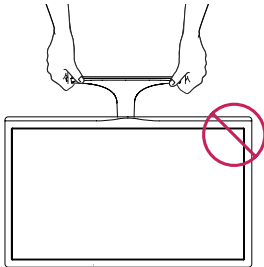
When you adjust the angle, do not hold the bottom of the Monitor set frame as shown on the following illustration, as may injure your fingers.



Do not touch or press the screen when adjusting the angle of the monitor.



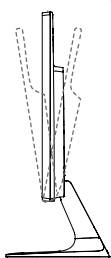
Do not hold this set like below picture. Monitor screen can detach from stand base and injure your body.

**! NOTE**

Tilt from +20 to -5 degrees up or down to adjust the angle of the Monitor set to suit your view.



Front

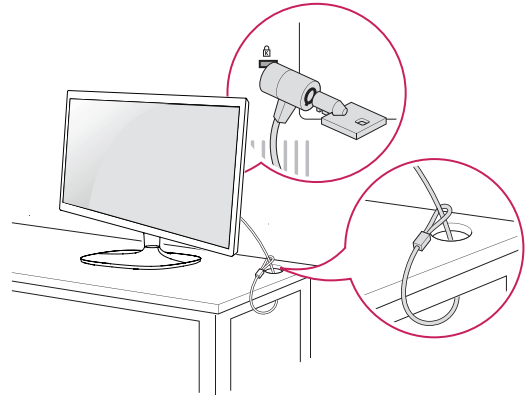


Rear

**Using the Kensington security system**

The Kensington security system connector is located at the back of the Monitor set. For more information of installation and using, refer to the manual supplied with the Kensington security system or visit <http://www.kensington.com>.

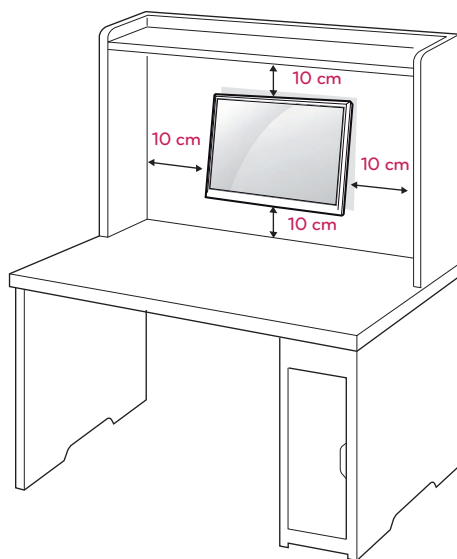
Connect the Kensington security system cable between the Monitor set and a table.

**! NOTE**

The Kensington security system is optional. You can obtain it from most electronics stores.

## Mounting on a wall

For proper ventilation, allow a clearance of 10 cm on each side and from the wall. Detailed instructions are available from your dealer, see the optional Tilt Wall Mounting Bracket Installation and Setup Guide.



If you intend to mount the Monitor set to a wall, attach Wall mounting interface (optional parts) to the back of the set.

When you install the Monitor set using a wall mounting interface (optional parts), attach it carefully so it will not drop.

- 1 If you use screw longer than standard, the monitor might be damaged internally.
- 2 If you use improper screw, the product might be damaged and drop from mounted position. In this case, LG Electronics is not responsible for it.

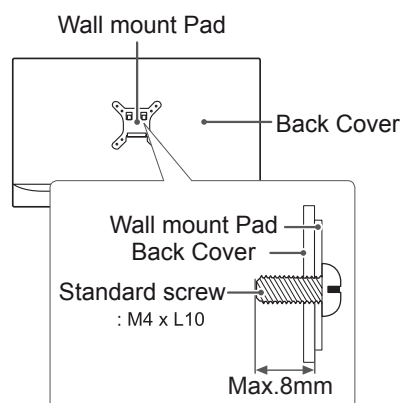
<b>Model</b>	19M37A	20M37A	22M37A	22MC37D
	19M37D	20M37D	22M37D	
	19M37H	20M37H	22M37H	
		20MP37A	22M37HQ	
<b>Wall Mount (A x B)</b>	75 x 75			
<b>Standard screw</b>	M4			
<b>Number of screws</b>	4			

<b>Model</b>	27M37D	27MP37HQ	27MP37VQ	27MP36HQ
	24M37A	24M37H	27MC37HQ	
	24M37D	24M37HQ	24MC37D	
<b>Wall Mount (A x B)</b>	100 x 100			
<b>Standard screw</b>	M4			
<b>Number of screws</b>	4			



### CAUTION

- Disconnect the power cord first, and then move or install the Monitor set. Otherwise electric shock may occur.
- If you install the Monitor set on a ceiling or slanted wall, it may fall and result in severe injury.
- Use only an authorized LG wall mount and contact the local dealer or qualified personnel.
- Do not over tighten the screws as this may cause damage to the Monitor set and void your warranty.
- Use only screws and wall mounts that meet the VESA standard. Any damages or injuries by misuse or using an improper accessory are not covered by the warranty.
- Screw length from outer surface of back cover should be under 8mm.



### NOTE

- Use the screws that are listed on the VESA standard screw specifications.
- The wall mount kit will include an installation manual and necessary parts.
- The wall mount bracket is optional. You can obtain additional accessories from your local dealer.
- The length of screws may differ depending on the wall mount. Be sure to use the proper length.
- For more information, refer to the instructions supplied with the wall mount.



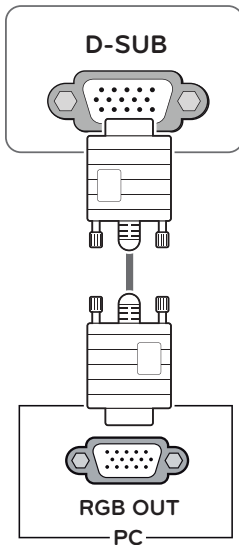
# USING THE MONITOR SET

## Connecting to a PC

- Your Monitor set supports Plug & Play\*.
- \*Plug & Play: A PC recognizes a connected device that users connect to a PC and turn on, without device configuration or user intervention.

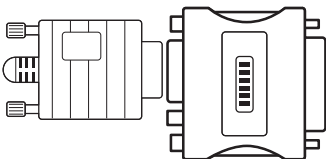
### D-SUB connection

Transmits analog video from your PC to the Monitor set. Connect the PC and the Monitor set with the supplied D-sub 15 pin signal cable as shown in the following illustrations.



#### NOTE

- When using a D-Sub signal input cable connector for Macintosh



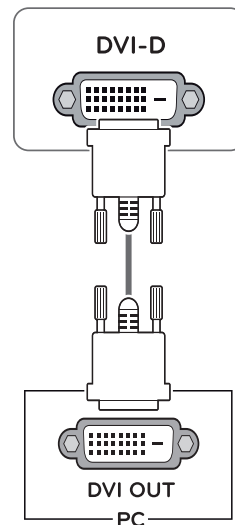
#### • Mac adapter

For Apple Macintosh use, a separate plug adapter is needed to change the 15 pin high density (3 row) D-SUB VGA connector on the supplied cable to a 15 pin 2 row connector.

### DVI-D connection

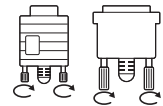
Transmits a digital video signal from your PC to the Monitor set. Connect the PC and the Monitor set with a DVI cable as shown in the following illustrations.

19M37D	20M37D	22M37D	22MC37D
24M37D	27M37D	27MP37VQ	24MC37D



#### CAUTION

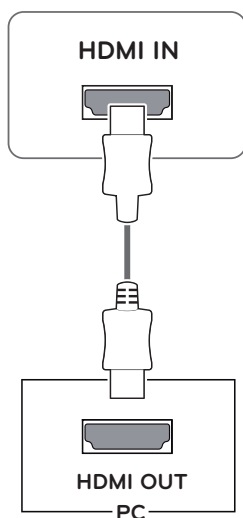
- Connect the signal input cable and tighten it by turning the screws clockwise.
- Do not press the screen with your finger for a long time as this may result in temporary distortion on the screen.
- Avoid displaying a fixed image on the screen for a long period of time to prevent image burn. Use a screensaver if possible.



## HDMI connection

Transmits the digital video and audio signals from your PC to the Monitor set. Connect the PC and the Monitor set with the HDMI cable as shown in the following illustrations.

19M37H	20M37H	22M37H	22M37HQ
24M37H	24M37HQ	27MP37HQ	27MP37VQ
27MC37HQ	27MP36HQ		



### ! NOTE

- If you use HDMI PC, it can cause compatibility problem.
- Use a certified cable with the HDMI logo attached. If you do not use a certified HDMI cable, the screen may not display or a connection error may occur.
- Recommended HDMI cable types
  - High-Speed HDMI<sup>®</sup>/™ Cable
  - High-Speed HDMI<sup>®</sup>/™ Cable with Ethernet

### ! NOTE

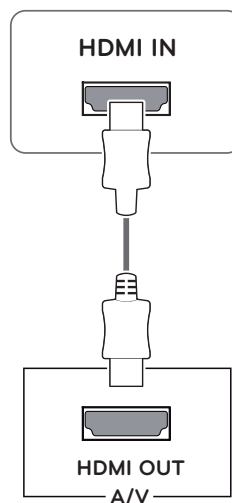
- When you want to use two PC in our Monitor, please connect the signal cable(D-SUB/ DVI-D/HDMI) respectively in Monitor set.
- If you turn the Monitor set on while it is cold, the screen may flicker. This is normal.
- Some red, green, or blue spots may appear on the screen. This is normal.

## Connecting to AV Devices

### HDMI connection

Transmits the digital video and audio signals from your AV devices to the monitor. Connect your AV device to the monitor with the HDMI cable as illustrated below.

19M37H	20M37H	22M37H	22M37HQ
24M37H	24M37HQ	27MP37HQ	27MP37VQ
27MC37HQ	27MP36HQ		



### ! NOTE

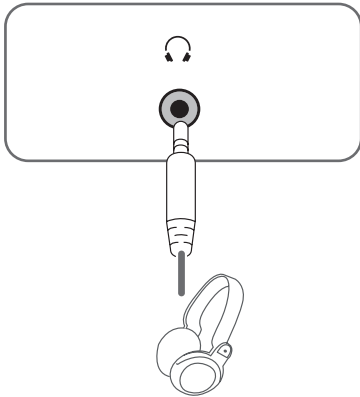
- If you use HDMI PC, it can cause compatibility problem.
- Use a certified cable with the HDMI logo attached. If you do not use a certified HDMI cable, the screen may not display or a connection error may occur.
- Recommended HDMI cable types
  - High-Speed HDMI<sup>®</sup>/™ Cable
  - High-Speed HDMI<sup>®</sup>/™ Cable with Ethernet

## Connecting to External Devices

### Peripheral device connection

Connect peripheral devices to the monitor using headphone ports.

19M37H	20M37H	22M37H	22M37HQ
24M37H	24M37HQ	27MP37HQ	27MP37VQ
27MC37HQ	27MP36HQ		

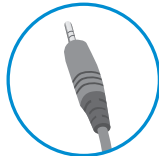


#### NOTE

- Peripheral devices are sold separately.
- Cables with angled plugs may have clearance issues, use straight plugs when possible.



Angle Type



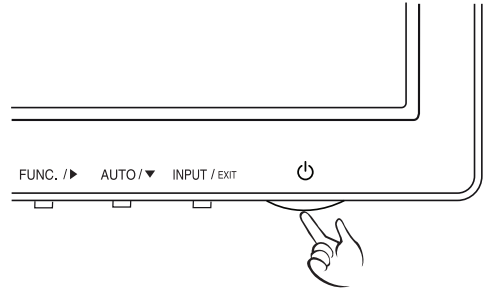
Straight Type

#### NOTE

- Headphones or speakers may not work normally, depending on the server PC settings.

### Self Image Setting Function

Press the power button on the bottom panel to turn the power on. When monitor power is turned on, the **"Self Image Setting"** Function is executed automatically. (Only supported in Analog Mode)

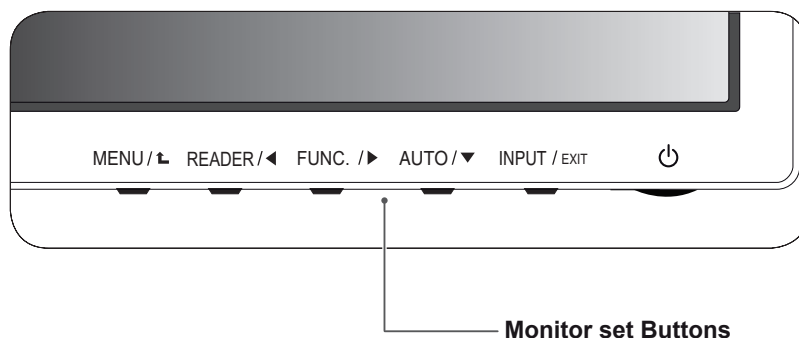


#### NOTE

- "Self Image Setting" Function.**  
This function provides the user with optimal display settings. When the user connects the monitor for the first time, this function automatically adjusts the display to optimal settings for individual input signals. (Only supported in Analog Mode)
- 'AUTO' Function.**  
When you encounter problems such as blurry screen, blurred letters, screen flicker or tilted screen while using the device or after changing screen resolution, press the AUTO function button to improve resolution. (Only supported in Analog Mode)

# CUSTOMIZING SETTINGS

- 1 Press the desired button on the bottom of the Monitor set.
- 2 Change the value of the menu item by pressing the buttons on the bottom of the Monitor set.  
To return to the upper menu or set other menu items, use the up arrow (⬆) button.
- 3 Select **EXIT** to leave the OSD menu.

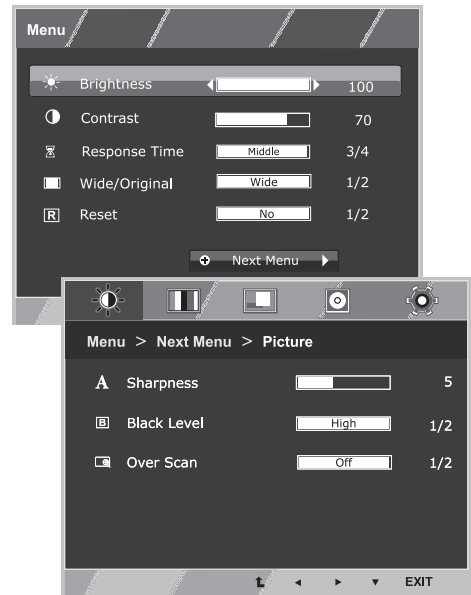


Button	Description	
MENU / ⬆	Accesses the main menus.(See p.17)	
	<b>OSD Locked/OSD Unlocked</b>	This function allow you to lock the current control settings, so that they cannot be inadvertently changed. Press and hold the MENU button for several seconds. Then OSD of "OSD Lock" will appear. After that, user can select lock or unlock by pressing left/right button. If user selects the "Lock" icon by pressing the "OK" button, the message "OSD Locked" will appear. Otherwise, "OSD Unlocked" will appear. After selecting the "Lock", If you want to change to Unlock, you can push the "MENU" button for several seconds. The message "OSD Unlocked" will appear.
READER / ⬅	Use this button to enter Reader Mode menu. Its function works to display screen as paper-like picture for Eye comfort.If you want to more information(See p.23).	
FUNC. / ➡	Use this button to enter SMART ENERGY SAVING , Picture Mode,Color Wizard, DUAL DISPLAY, DUAL WEB menus.(See p.24~27)	
AUTO / ⬇	When adjusting your display settings, always press the AUTO button on the MONITOR SETUP OSD. (Only supported in Analog Mode)	
	<b>The best display mode</b>	19M37A/19M37D/19M37H: 1366 x 768 20M37A/20M37D/20M37H/20MP37A: 1600 x 900 22M37A/22M37D/22MC37D/22M37H/22M37HQ/24M37A/24M37D/ 24MC37D/24M37H/24M37HQ/27M37D/27MP37HQ/27MP37VQ/ 27MC37HQ /27MP36HQ: 1920 x 1080
INPUT / EXIT	You can choose the input signal.	
	<ul style="list-style-type: none"> <li>• When two input signals are connected, you can select the input signal (D-SUB/DVI-D/ HDMI) you want.</li> <li>• When only one signal is connected, it is automatically detected. The default setting is D-SUB.</li> </ul>	
	<b>EXIT</b>	
⏻ (Power Button)	EXIT the OSD(On Screen Display).	
	<b>Power Indicator</b>	The power indicator stays white if the display is running properly (On Mode). If the display is in Sleep Mode, the power indicator blinks white.

# Customizing Settings

## Menu Settings

- 1 Press **MENU** button on the bottom of the Monitor set to display the **Menu** OSD.
- 2 Set the options by pressing the ◀ or ▶ or ▼ buttons.
- 3 Select the "**Next Menu**" button to enter the more option settings.
- 4 Select **EXIT** to leave the OSD menu.  
To return to the upper menu or set other menu items, use the up arrow (⬆) button.



Each option is explained below.

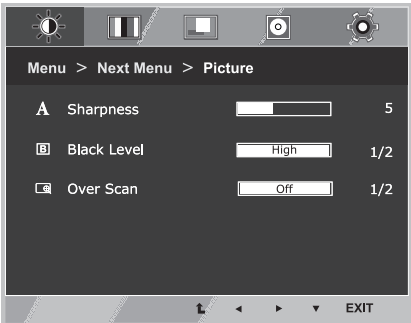
Menu	Analog	Digital	HDMI	Description
<b>Brightness</b>	•	•	•	To adjust the brightness, contrast of the screen.
<b>Contrast</b>	•	•	•	
<b>Response Time</b> 22M37HQ 24M37HQ 27MP37HQ 27MP37VQ 27MC37HQ 27MP36HQ	•	•	•	You can set a response time for displayed pictures based on the speed of the screen. For a normal environment, it is recommended that you use 'Off'. For a fast-moving picture, it is recommended that you use 'High'.
<b>Wide/Original</b>	•	•	•	<b>Wide</b> Switch to full screen mode according to input image signal.
				<b>Original</b> Change the input image signal ratio to original. * This function works only if input resolution is lower than Monitor set ratio (16:9).
<b>Reset</b>	•	•	•	Restore all factory default settings. Press the ◀ , ▶ buttons to reset immediately.

Menu > Next Menu		Analog	Digital	HDMI	Description
Picture	Sharpness	•	•	•	To adjust the clearness of the screen
	Black Level				To set offset level
	19M37H20M37H				
	22M37H24M37H				
	22M37HQ24M37HQ				
27MP37HQ27MP37VQ					
27MC37HQ27MP36HQ					
Over Scan					To improve the clarity and stability of the screen
	19M37H20M37H				
	22M37H24M37H				
	22M37HQ24M37HQ				
	27MP37HQ27MP37VQ				
27MC37HQ27MP36HQ					
Color	Gamma	•	•	•	To customize the color of the screen
	Color Temp				
	Six Color				
	20MP37A27MC37HQ				
	27MP37HQ27MP37VQ				
27MP36HQ					
Color Reset					
	20MP37A27MC37HQ				
	27MP37HQ27MP37VQ				
	27MP36HQ				
Display	Horizontal	•			To adjust the position of the screen
	Vertical				
	Clock	•			To improve the clarity and stability of the screen
	Phase				
Audio	Volume			•	To adjust the volume
	19M37H20M37H				
	22M37H24M37H				
	22M37HQ24M37HQ				
	27MP37HQ27MP37VQ				
27MC37HQ27MP36HQ					
Others	Language	•	•	•	To customize the screen status for a user's operating environment
	Power Indicator				
	Automatic Standby	•	•	•	
	19M37H20M37H				
	22M37H24M37H				
22M37HQ24M37HQ					
27MP37HQ27MP37VQ					
27MC37HQ27MP36HQ					
Resolution	•				

- **Analog:** D-SUB(Analog signal) input.
- **Digital:** DVI-D(Digital signal) input.
- **HDMI:** HDMI(Digital signal) input.

Picture

- 1 Press **MENU** button on the bottom of the Monitor set to display the **Menu OSD**.
  - 2 Select the "**Next Menu**" button to enter the more option settings.
  - 3 Enter to **Picture** by pressing the ▼ button.
  - 4 Set the options by pressing the ◀ or ▶ or ▼ buttons.
  - 5 Select **EXIT** to leave the OSD menu.
- To return to the upper menu or set other menu items, use the up arrow (⬆) button.

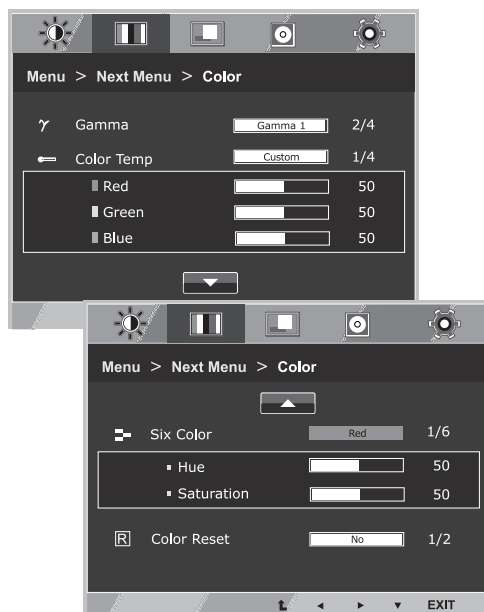


Each option is explained below.

Menu > Next Menu > Picture	Description
<b>Sharpness</b>	To adjust the clearness of the screen.
<b>Black Level</b> <div>19M37H 20M37H 22M37H 24M37H 22M37HQ 24M37HQ 27MP36HQ 27MP37HQ 27MP37VQ 27MC37HQ</div>	You can set the offset level. If you select 'High', the screen will be bright and if you select 'Low', the screen will be dark.(only for HDMI input) * Offset?As the criteria for video signal, it is the darkest screen the monitor can show.
<b>Over Scan</b> <div>19M37H 20M37H 22M37H 24M37H 22M37HQ 24M37HQ 27MP36HQ 27MP37HQ 27MP37VQ 27MC37HQ</div>	To select the range of output image for DTV timing in HDMI input.(only for HDMI input)Recommend overscan function to turn on when connect AV equipment.

## Color

- 1 Press **MENU** button on the bottom of the Monitor set to display the **Menu OSD**.
- 2 Select the "**Next Menu**" button to enter the more option settings.
- 3 Select **Color** by pressing the **►** button.
- 4 Enter to **Color** by pressing the **▼** button.
- 5 Set the options by pressing the **◀** or **►** or **▼** buttons.
- 6 Select **EXIT** to leave the OSD menu.  
To return to the upper menu or set other menu items, use the up arrow (**⬆**) button.



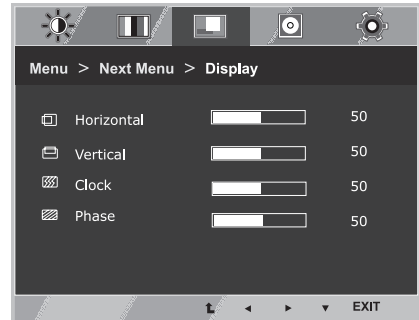
Each option is explained below.

Menu > Next Menu > Color	Description				
<b>Gamma</b>	Set your own gamma value. : Gamma 0, Gamma 1, Gamma 2, Off on the monitor, high gamma values display whitish images and low gamma values display blackish images. If user don't want adjusted gamma, user can select Gamma off.				
<b>Color Temp</b>	<b>Custom</b> <ul style="list-style-type: none"> <li>• <b>Red</b>: Set your own red color levels.</li> <li>• <b>Green</b>: Set your own green color levels.</li> <li>• <b>Blue</b>: Set your own blue color levels.</li> </ul> Select the screen color. <b>Warm</b> : Set the screen to warm color temperature (more red). <b>Medium</b> : Set the screen to medium color temperature. <b>Cool</b> : Set the screen to cool color temperature (more blue).				
<b>Six Color</b> 20MP37A 27MC37HQ 27MP37HQ 27MP37VQ 27MP36HQ	Sets and stores the hue and saturation for six colors(Red/Green/Blue/Cyan/Magenta/Yellow) to satisfy the color requirements of a user. <table border="1"> <tr> <td><b>Hue</b></td><td>Adjusts the screen hue.</td></tr> <tr> <td><b>Saturation</b></td><td>Adjusts the color sharpness on the screen. Lower values make the color sharpness weaker and colors lighter while higher values make the color sharpness stronger and colors dark.</td></tr> </table>	<b>Hue</b>	Adjusts the screen hue.	<b>Saturation</b>	Adjusts the color sharpness on the screen. Lower values make the color sharpness weaker and colors lighter while higher values make the color sharpness stronger and colors dark.
<b>Hue</b>	Adjusts the screen hue.				
<b>Saturation</b>	Adjusts the color sharpness on the screen. Lower values make the color sharpness weaker and colors lighter while higher values make the color sharpness stronger and colors dark.				
<b>Color Reset</b> 20MP37A 27MC37HQ 27MP37HQ 27MP37VQ 27MP36HQ	Resets the color settings to the factory default settings for the current input device.				



## Display

- 1 Press **MENU** button on the bottom of the Monitor set to display the **Menu OSD**.
- 2 Select the "**Next Menu**" button to enter the more option settings.
- 3 Select **Display** by pressing the ► button.
- 4 Enter to **Display** by pressing the ▼ button.
- 5 Set the options by pressing the ◀ or ▶ or ▼ buttons.
- 6 Select **EXIT** to leave the OSD menu.  
To return to the upper menu or set other menu items, use the up arrow (⬆) button.



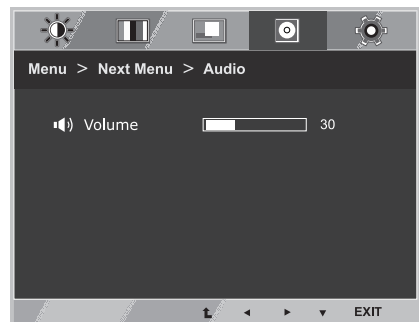
Each option is explained below.

Menu > Next Menu > Display	Description
<b>Horizontal</b>	To move image left and right.
<b>Vertical</b>	To move image up and down.
<b>Clock</b>	To minimize any vertical bars or stripes visible on the screen background. The horizontal screen size will also change.
<b>Phase</b>	To adjust the focus of the display. This item allows you to remove any horizontal noise and clear or sharpen the image of characters.

## Audio

19M37H 20M37H 22M37H 24M37H 27MP36HQ  
22M37HQ 24M37HQ 27MP37HQ 27MP37VQ 27MC37HQ

- 1 Press **MENU** button on the bottom of the Monitor set to display the **Menu OSD**.
- 2 Select the "**Next Menu**" button to enter the more option settings.
- 3 Select **Audio** by pressing the ► button.
- 4 Enter to **Volume** by pressing the ▼ button.
- 5 Set the options by pressing the ◀ or ▶ buttons.
- 6 Select **EXIT** to leave the OSD menu.  
To return to the upper menu or set other menu items, use the up arrow (⬆) button.

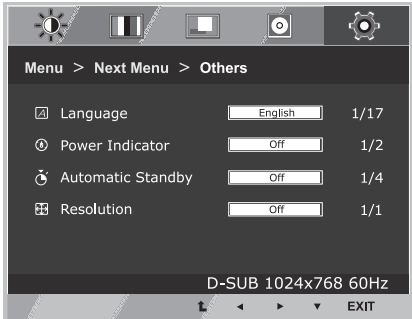


Each option is explained below.

Menu > Next Menu > Audio	Description
<b>Volume</b>	To adjust the volume of headphone/earphone. (Only for HDMI input)

# Others

- 1 Press **MENU** button on the bottom of the Monitor set to display the **Menu** OSD.
- 2 Select the "**Next Menu**" button to enter the more option settings.
- 3 Select **Others** by pressing the ► button.
- 4 Enter to **Others** by pressing the ▼ button.
- 5 Set the options by pressing the ◀ or ▶ or ▼ buttons.
- 6 Select **EXIT** to leave the OSD menu.  
To return to the upper menu or set other menu items, use the up arrow (⬆) button.

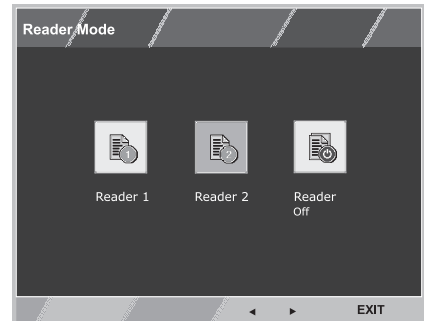


Each option is explained below.

Menu > Next Menu > Others	Description	
Language	To choose the language in which the control names are displayed.	
Power Indicator	Use this function to set the power indicator on the bottom side of the monitor to On or Off. If you set Off, it will go off. If you set On at any time, the power indicator will automatically be turned on.	
Automatic Standby	The monitor will automatically switch to standby mode after a certain period.	
Resolution	User can set the desired resolution. The function is enabled only when the screen resolution on your computer is set to the following, except that the PC output wrong resolution.	
	19M37A 19M37D 19M37H	Off, 1024x768, 1280x768, 1360x768, 1366x768
	20M37A 20M37D 20M37H 20MP37A	Off, 1024x768, 1280x768, 1360x768, 1366x768
	22M37A 22M37D 22M37H 22M37HQ	Off, 1280x960, 1600x900
	24M37A 24M37D 24M37H 24M37HQ	Off, 1440x900, 1600x900
	27M37D 27MP37HQ 27MP37VQ 27MP36HQ	
	22MC37D 24MC37D 27MC37HQ	

## READER Setting

- 1 Press **READER** button on the bottom of the Monitor set to display the **Reader Mode** OSD.
- 2 Set the options by pressing the ◀ or ▶ buttons.
- 3 Select **EXIT** to leave the OSD menu.



Each option is explained below.

Reader Mode	Description
<b>Reader 1</b>	It is a mode that the screen is adjusted to the best for the newspaper. If you want screen more bright, you can control brightness in Menu OSD.
<b>Reader 2</b>	It is a mode that the screen is adjusted to the best for the cartoon. If you want screen more bright, you can control brightness in Menu OSD.
<b>Reader Off</b>	It is a mode that reader mode is off.

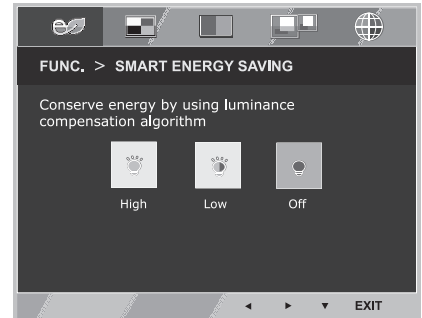
### ! NOTE

If option of Reader Mode is Reader 1 or Reader 2, Picture Mode will automatically be Custom and SMART ENERGY SAVING and Color Wizard will automatically be Off.

# FUNC. Setting

## SMART ENERGY SAVING

- 1 Press **FUNC.** button on the bottom of the Monitor set to display the **FUNC.** OSD.
- 2 Enter to **SMART ENERGY SAVING** by pressing the ▼ button.
- 3 Set the options by pressing the ◀ or ▶ buttons.
- 4 Select **EXIT** to leave the OSD menu.To return to the upper menu or set other menu items, use the up arrow (⬆) button.



Each option is explained below.

SMART ENERGY SAVING	Description
High	Enables SMART ENERGY SAVING you can save energy with this energy- high efficient function.
Low	Enables SMART ENERGY SAVING you can save energy with this energy- low efficient function.
Off	Disables SMART ENERGY SAVING .

\* **SMART ENERGY SAVING:** Conserve energy by using luminance compensation algorithm.



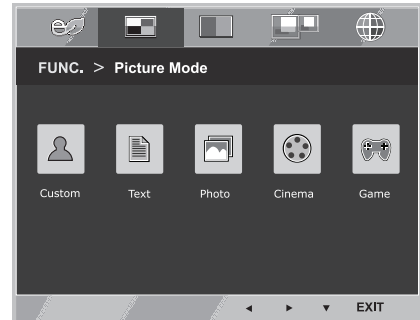
### NOTE

- Saving Data depends on the Panel. So,those values should be different from each panel and panel vendor.If option of SMART ENERGY SAVING is High or Low, monitor luminance become higher or lower depend on source.
- If option of SMART ENERGY SAVING is High or Low, Picture Mode will automatically be Custom and Reader Mode and Color Wizard will automatically be Off.

## Picture Mode

- 1 Press **FUNC.** button on the bottom of the Monitor set to display the **FUNC.** OSD.
- 2 Select **Picture Mode** by pressing the ► button.
- 3 Enter to **Picture Mode** by pressing the ▼ button.
- 4 Set the options by pressing the ◀ or ▶ buttons.
- 5 Select **EXIT** to leave the OSD menu. To return to the upper menu or set other menu items, use the up arrow(↑)button.

### PC Mode



### AV Mode

19M37H	20M37H	22M37H	24M37H
22M37HQ	24M37HQ	27MP37HQ	27MP37VQ
27MC37HQ	27MP36HQ		



Each option is explained below.

Picture Mode	Description
<b>Custom</b>	It is a mode that the user can adjust each element. It can adjust the color mode of the Main Menu.
<b>Text</b>	It is a mode that the screen is adjusted to the best for the textworks.
<b>Photo</b>	It is a mode that the screen is adjusted to the best to view pictures.
<b>Cinema</b>	It is a mode that the screen is adjusted to the best to view the videos.
<b>Game</b>	It is a mode that the screen is adjusted to the best to play a game.

19M37H	20M37H	22M37H	24M37H	27MP36HQ
22M37HQ	24M37HQ	27MP37HQ	27MP37VQ	27MC37HQ

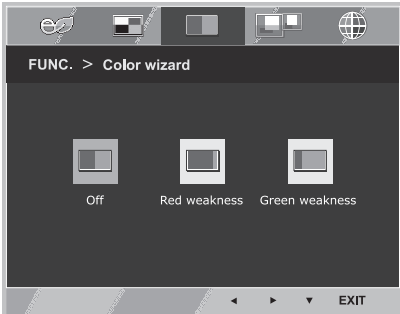
Picture Mode	Description
<b>Custom</b>	It is a mode that the user can adjust each element. It can adjust the color mode of the Main Menu.
<b>Vivid 1</b>	Adjusts the video image for the retail environment by enhancing the contrast, brightness, Colour, and sharpness.
<b>Vivid 2</b>	
<b>Standard</b>	Adjusts the image for the normal environment.
<b>Cinema</b>	It is a mode that the screen is adjusted to the best to view the videos.

### ! NOTE

If option of Picture Mode is non-Custom , Reader Mode, SMART ENERGY SAVING and Color Wizard will automatically be Off.

# Color wizard

- 1 Press **FUNC.** button on the bottom of the Monitor set to display the **FUNC.** OSD.
- 2 Select **Color wizard** by pressing the **►** button.
- 3 Enter to **Color wizard** by pressing the **▼** button.
- 4 Set the options by pressing the **◀** or **►** buttons.
- 5 Select **EXIT** to leave the OSD menu. To return to the upper menu or set other menu items, use the up arrow (**↑**) button.



Each option is explained below.

Color wizard	Description
Off	It is a mode that Color Wizard mode is off.
Red weakness	It is a mode for user who has inability to see red color. It make color weakness user can easily distinguish red colors.
Green weakness	It is a mode for user who has inability to see green color. It make color weakness user can easily distinguish green colors.

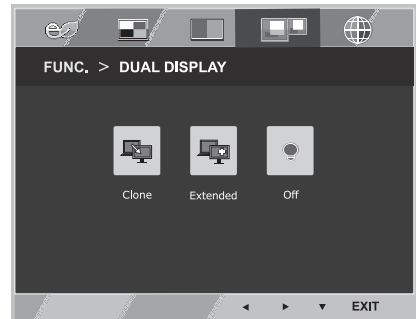
## ! NOTE

- This is subsidiary for color weakness user. Therefore if you feel uncomfortable with the screen, please turn off this function.
- This function can't distinguish some colors in some images.
- If option of Color Wizard is not Off , Reader Mode and SMART ENERGY SAVING will be Off and Picture Mode will automatically be Custom.

\* Before using below functions, please install DUAL SMART SOLUTION programme.

## DUAL DISPLAY

- 1 Press **FUNC.** button on the bottom of the Monitor set to display the **FUNC.** OSD.
- 2 Select **DUAL DISPLAY** by pressing the ► button.
- 3 Enter to **DUAL DISPLAY** by pressing the ▼ button.
- 4 Set the options by pressing the ◀ or ► buttons.
- 5 Select **EXIT** to leave the OSD menu. To return to the upper menu or set other menu items, use the up arrow (↑) button.



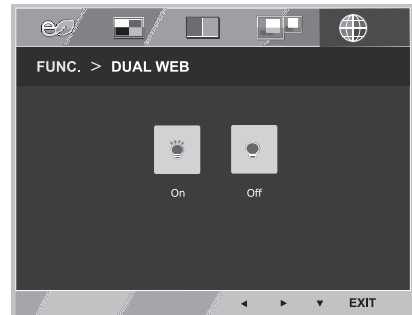
Each option is explained below.

DUAL DISPLAY	Description
<b>Clone</b>	By selecting Clone, user can use secondary monitor as done mode of primary monitor.
<b>Extended</b>	By selecting Extended, user can use secondary monitor as extended mode of primary monitor.
<b>Off</b>	If select Off, DUAL DISPLAY is off.

\* Before using below functions, please install DUAL SMART SOLUTION programme.

## DUAL WEB

- 1 Press **FUNC.** button on the bottom of the Monitor set to display the **FUNC.** OSD.
- 2 Select **DUAL WEB** by pressing the ► button.
- 3 Enter to **DUAL WEB** by pressing the ▼ button.
- 4 Set the options by pressing the ◀ or ► buttons.
- 5 Select **EXIT** to leave the OSD menu. To return to the upper menu or set other menu items, use the up arrow (↑) button.



Each option is explained below.

DUAL WEB	Description
<b>On</b>	Help user to browse web efficiently by dividing in half. Help to arrange and move windows on screen. Help user to control divided windows ratio.
<b>Off</b>	If select Off, DUAL WEB is off.

### ! NOTE

- When monitor goes to power saving mode with pc saving option -> Pressing any button -> OSD appear and user should press dual button -> User can bring back to normal mode.

# TROUBLESHOOTING

Check the following before calling for service.

No image appears	
Is the power cord of the display connected?	<ul style="list-style-type: none"> <li>Check and see if the power cord is connected properly to the power outlet.</li> </ul>
Is the power indicator light on?	<ul style="list-style-type: none"> <li>Press the Power button.</li> </ul>
Is the power on and the power indicator White?	<ul style="list-style-type: none"> <li>Adjust the brightness and the contrast.</li> </ul>
Is the power indicator flickering?	<ul style="list-style-type: none"> <li>If the display is in power saving mode, try moving the mouse or pressing any key on the keyboard to bring up the screen.</li> <li>Try to turn on the PC.</li> </ul>
Do you see an "OUT OF RANGE" message on the screen?	<ul style="list-style-type: none"> <li>This message appears when the signal from the PC (video card) is out of horizontal or vertical frequency range of the display. See the 'Specifications' section of this manual and configure your display again.</li> </ul>
Do you see a "NO SIGNAL" message on the screen?	<ul style="list-style-type: none"> <li>When the monitor is on "No-Signal" in 5 minutes, the monitor goes to DPM mode.</li> </ul>

Do you see a "OSD LOCKED" message on the screen?	
Do you see "OSD LOCKED" when you push MENU button?	<ul style="list-style-type: none"> <li>You can secure the current control settings, so that they cannot be inadvertently changed. You can unlock the OSD controls at any time by pushing the MENU button for several seconds: the message "OSD UNLOCKED" will appear.</li> </ul>

Display image is incorrect	
Display Position is incorrect.	<ul style="list-style-type: none"> <li>Press the <b>AUTO</b> button to automatically adjust your display image to the ideal setting.</li> </ul>
On the screen background, vertical bars or stripes are visible.	<ul style="list-style-type: none"> <li>Press the <b>AUTO</b> button to automatically adjust your display image to the ideal setting.</li> </ul>
Any horizontal noise appearing in any image or characters are not clearly portrayed.	<ul style="list-style-type: none"> <li>Press the <b>AUTO</b> button to automatically adjust your display image to the ideal setting.</li> <li>Check <b>Control Panel ► Display ► Settings</b> and adjust the display to the recommended resolution or adjust the display image to the ideal setting. Set the color setting higher than 24 bits (true color).</li> </ul>



**CAUTION**

- Check **Control Panel ► Display ► Settings** and see if the frequency or the resolution were changed. If yes, readjust the video card to the recommend resolution.
- If the recommended resolution (optimal resolution) is not selected, letters may be blurred and the screen may be dimmed, truncated or biased. Make sure to select the recommend resolution.
- The setting method can differ by computer and O/S (Operation System), and resolution mentioned above may not be supported by the video card performance. In this case, please ask to the computer or the video card manufacturer.

**Display image is incorrect**

The screen color is mono or abnormal.

- Check if the signal cable is properly connected and use a screwdriver to fasten if necessary.
- Make sure the video card is properly inserted in the slot.
- Set the color setting higher than 24 bits (true color) at **Control Panel ► Settings**.

The screen blinks.

- Check if the screen is set to interlace mode and if yes, change it to the recommend resolution.

**Do you see an "Unrecognized monitor, Plug&Play (VESA DDC) monitor found" message?**

Have you installed the display driver?

- Be sure to install the display driver from the display driver CD (or diskette) that comes with your display. Or, you can also download the driver from our web site: <http://www.lg.com>.
- Make sure to check if the video card supports Plug&Play function.

# SPECIFICATIONS

19M37A

19M37D

19M37H

<b>Display</b>	<b>Screen Type</b>	Flat Panel Active matrix-TFT LCD Anti-Glare coating
	<b>Pixel Pitch</b>	0.3 mm x 0.3 mm (Pixel Pitch)
<b>Resolution</b>	<b>Max</b>	1366 x 768 @ 60 Hz
	<b>Recommend</b>	VESA 1366 x 768 @ 60 Hz
<b>Power Consumption</b>	On Mode : 13 W (ENERGY STAR® standard)* Sleep Mode ≤ 0.3 W Off Mode ≤ 0.3 W	
<b>Power Input</b>	19 V --- 0.8 A	
<b>AC-DC Adapter</b>	Type ADS-18SG-19-3 19016G, manufactured by SHENZHEN HONOR ELECTRONIC or Type ADS-18FSG-19 19016GPG, manufactured by SHENZHEN HONOR ELECTRONIC or Type ADS-18FSG-19 19016GPI, manufactured by SHENZHEN HONOR ELECTRONIC or Type ADS-18FSG-19 19016GPCU, manufactured by SHENZHEN HONOR ELECTRONIC or Type ADS-18FSG-19 19016GPB, manufactured by SHENZHEN HONOR ELECTRONIC or Type LCAP42, manufactured by LIEN CHANG ELECTRONIC ENTERPRISE or Type LCAP36-A, manufactured by LIEN CHANG ELECTRONIC ENTERPRISE or Type LCAP36-E, manufactured by LIEN CHANG ELECTRONIC ENTERPRISE or Type LCAP36-I, manufactured by LIEN CHANG ELECTRONIC ENTERPRISE or Type LCAP36-U, manufactured by LIEN CHANG ELECTRONIC ENTERPRISE <b>OUTPUT: 19 V --- 0.84 A</b>	
<b>Dimensions (Width x Height x Depth)</b>	<b>With Stand</b>	44.1 cm x 34.9 cm x 16.8 cm
	<b>Without Stand</b>	44.1 cm x 27.5 cm x 5.7 cm
<b>Weight</b>	2.1 kg	
<b>Tilt Range</b>	-5° to 20°	
<b>Environmental conditions</b>	<b>Operating Temperature</b>	10°C to 35 °C
	<b>Operating Humidity</b>	10 % to 80 %
	<b>Storage Temperature</b>	-20°C to 60 °C
	<b>Storage Humidity</b>	5 % to 90 % non-Condensing
<b>Stand Base</b>	Attached ( ), Detached (O)	
<b>Power cord</b>	Wall-outlet type	

Product specifications shown above may be changed without prior notice due to upgrade of product functions.

\* The power consumption level can be different by operating condition and monitor setting.

\* The On mode power consumption is measured with ENERGY STAR® test standard.

			19M37A	19M37D	19M37H
<b>Sync Input</b>	<b>Horizontal Frequency</b>	30 kHz to 83 kHz (Automatic)			
		30 kHz to 61 kHz (Automatic)	•	•	•
	<b>Vertical Frequency</b>	56 Hz to 75 Hz (D-SUB)	•	•	•
		56 Hz to 75 Hz (DVI-D)		•	
		56 Hz to 61 Hz (HDMI)			•
	<b>Input Form</b>	Separate Sync.	•	•	•
		Digital		•	•
<b>Video Input</b>	<b>Signal Input</b>	15 pin D-SUB Connector	•	•	•
		DVI-D Connector (Digital)		•	
		HDMI Connector			•
	<b>Input Form</b>	RGB Analog (0.7 Vp-p/ 75 ohm)	•	•	•
		Digital		•	•
<b>Plug &amp; Play</b>	DDC 2B(Analog)		•	•	•
	DDC 2B(Digital)			•	
	DDC 2B(HDMI)				•

# SPECIFICATIONS

ENGLISH

20M37A

20M37D

20M37H

20MP37A

<b>Display</b>	<b>Screen Type</b>	Flat Panel Active matrix-TFT LCD Anti-Glare coating
	<b>Pixel Pitch</b>	0.271 mm x 0.262 mm (Pixel Pitch)
<b>Resolution</b>	<b>Max</b>	1600 x 900 @ 60 Hz
	<b>Recommend</b>	VESA 1600 x 900 @ 60 Hz
<b>Power Consumption</b>	On Mode : 16 W (ENERGY STAR® standard)* Sleep Mode ≤ 0.3 W Off Mode ≤ 0.3 W	
<b>Power Input</b>	19 V --- 0.8 A	
<b>AC-DC Adapter</b>	Type ADS-18SG-19-3 19016G, manufactured by SHENZHEN HONOR ELECTRONIC or Type ADS-18FSG-19 19016GPG, manufactured by SHENZHEN HONOR ELECTRONIC or Type ADS-18FSG-19 19016GPI, manufactured by SHENZHEN HONOR ELECTRONIC or Type ADS-18FSG-19 19016GPCU, manufactured by SHENZHEN HONOR ELECTRONIC or Type ADS-18FSG-19 19016GPB, manufactured by SHENZHEN HONOR ELECTRONIC or Type LCAP42, manufactured by LIEN CHANG ELECTRONIC ENTERPRISE or Type LCAP36-A, manufactured by LIEN CHANG ELECTRONIC ENTERPRISE or Type LCAP36-E, manufactured by LIEN CHANG ELECTRONIC ENTERPRISE or Type LCAP36-I, manufactured by LIEN CHANG ELECTRONIC ENTERPRISE or Type LCAP36-U, manufactured by LIEN CHANG ELECTRONIC ENTERPRISE <b>OUTPUT: 19 V --- 0.84A</b>	
<b>Dimensions (Width x Height x Depth)</b>	<b>With Stand</b>	46.3 cm x 35.7 cm x 16.8 cm
	<b>Without Stand</b>	46.3 cm x 28.7 cm x 5.7 cm
<b>Weight</b>	2.2 kg	
<b>Tilt Range</b>	-5° to 20°	
<b>Environmental conditions</b>	<b>Operating Temperature</b>	10°C to 35 °C
	<b>Operating Humidity</b>	10 % to 80 %
	<b>Storage Temperature</b>	-20°C to 60 °C
	<b>Storage Humidity</b>	5 % to 90 % non-Condensing
<b>Stand Base</b>	Attached ( ), Detached (O)	
<b>Power cord</b>	Wall-outlet type	

Product specifications shown above may be changed without prior notice due to upgrade of product functions.

\* The power consumption level can be different by operating condition and monitor setting.

\* The On mode power consumption is measured with ENERGY STAR® test standard.

			20M37A	20M37D	20M37H	20MP37A
<b>Sync Input</b>	<b>Horizontal Frequency</b>	30 kHz to 83 kHz (Automatic)	•	•	•	•
		30 kHz to 61 kHz (Automatic)				
	<b>Vertical Frequency</b>	56 Hz to 75 Hz (D-SUB)	•	•	•	•
		56 Hz to 75 Hz (DVI-D)		•		
		56 Hz to 61 Hz (HDMI)			•	
	<b>Input Form</b>	Separate Sync.	•	•	•	•
		Digital		•	•	
<b>Video Input</b>	<b>Signal Input</b>	15 pin D-SUB Connector	•	•	•	•
		DVI-D Connector (Digital)		•		
		HDMI Connector			•	
	<b>Input Form</b>	RGB Analog (0.7 Vp-p/ 75 ohm)	•	•	•	•
		Digital		•	•	
<b>Plug &amp; Play</b>	DDC 2B(Analog)		•	•	•	•
	DDC 2B(Digital)			•		
	DDC 2B(HDMI)				•	

# SPECIFICATIONS

22M37A

22M37D

22M37H

22M37HQ

22MC37D

<b>Display</b>	<b>Screen Type</b>	Flat Panel Active matrix-TFT LCD Anti-Glare coating
	<b>Pixel Pitch</b>	0.248 mm x 0.248 mm (Pixel Pitch)
<b>Resolution</b>	<b>Max</b>	1920 x 1080 @ 60 Hz
	<b>Recommend</b>	VESA 1920 x 1080 @ 60 Hz
<b>Power Consumption</b>	On Mode : 18 W (ENERGY STAR® standard)* Sleep Mode ≤ 0.3 W Off Mode ≤ 0.3 W	
<b>Power Input</b>	19 V --- 1.2 A	
<b>AC-DC Adapter</b>	Type ADS-40SG-19-3 19025G, manufactured by SHENZHEN HONOR ELECTRONIC or Type ADS-40FSG-19 19025GPG-1, manufactured by SHENZHEN HONOR ELECTRONIC or Type ADS-40FSG-19 19025GPBR-1, manufactured by SHENZHEN HONOR ELECTRONIC or Type ADS-40FSG-19 19025GPI-1, manufactured by SHENZHEN HONOR ELECTRONIC or Type ADS-40FSG-19 19025GPCU-1, manufactured by SHENZHEN HONOR ELECTRONIC or Type ADS-40FSG-19 19025GPB-2, manufactured by SHENZHEN HONOR ELECTRONIC or Type LCAP21, manufactured by LIEN CHANG ELECTRONIC ENTERPRISE or Type LCAP26-A, manufactured by LIEN CHANG ELECTRONIC ENTERPRISE or Type LCAP26-E, manufactured by LIEN CHANG ELECTRONIC ENTERPRISE or Type LCAP26-I, manufactured by LIEN CHANG ELECTRONIC ENTERPRISE or Type LCAP26-B, manufactured by LIEN CHANG ELECTRONIC ENTERPRISE <b>OUTPUT: 19 V --- 1.3 A</b>	
<b>Dimensions (Width x Height x Depth)</b>	<b>With Stand</b>	50.9 cm x 38.7 cm x 18.1 cm
	<b>Without Stand</b>	50.9 cm x 31.6 cm x 5.7 cm
<b>Weight</b>	2.6 kg	
<b>Tilt Range</b>	-5° to 20°	
<b>Environmental conditions</b>	<b>Operating Temperature</b>	10°C to 35 °C
	<b>Operating Humidity</b>	10 % to 80 %
	<b>Storage Temperature</b>	-20°C to 60 °C
	<b>Storage Humidity</b>	5 % to 90 % non-Condensing
<b>Stand Base</b>	Attached ( ), Detached (O)	
<b>Power cord</b>	Wall-outlet type	

Product specifications shown above may be changed without prior notice due to upgrade of product functions.

\* The power consumption level can be different by operating condition and monitor setting.

\* The On mode power consumption is measured with ENERGY STAR® test standard.

			22M37A	22M37D/ 22MC37D	22M37H	22M37HQ
<b>Sync Input</b>	<b>Horizontal Frequency</b>	30 kHz to 83 kHz (Automatic)	•	•	•	•
		30 kHz to 61 kHz (Automatic)				
	<b>Vertical Frequency</b>	56 Hz to 75 Hz (D-SUB)	•	•	•	•
		56 Hz to 75 Hz (DVI-D)		•		
		56 Hz to 61 Hz (HDMI)			•	•
	<b>Input Form</b>	Separate Sync.	•	•	•	•
		Digital		•	•	•
<b>Video Input</b>	<b>Signal Input</b>	15 pin D-SUB Connector	•	•	•	•
		DVI-D Connector (Digital)		•		
		HDMI Connector			•	•
	<b>Input Form</b>	RGB Analog (0.7 Vp-p/ 75 ohm)	•	•	•	•
		Digital		•	•	•
<b>Plug &amp; Play</b>	DDC 2B(Analog)		•	•	•	•
	DDC 2B(Digital)			•		
	DDC 2B(HDMI)				•	•

# SPECIFICATIONS

24M37A

24M37D

24M37H

24M37HQ

24MC37D

<b>Display</b>	<b>Screen Type</b>	Flat Panel Active matrix-TFT LCD Anti-Glare coating
	<b>Pixel Pitch</b>	0.272 mm x 0.272 mm (Pixel Pitch)
<b>Resolution</b>	<b>Max</b>	1920 x 1080 @ 60 Hz
	<b>Recommend</b>	VESA 1920 x 1080 @ 60 Hz
<b>Power Consumption</b>	On Mode : 19 W (ENERGY STAR® standard)* Sleep Mode ≤ 0.3 W Off Mode ≤ 0.3 W	
<b>Power Input</b>	19 V --- 1.2 A	
<b>AC-DC Adapter</b>	Type ADS-40SG-19-3 19025G, manufactured by SHENZHEN HONOR ELECTRONIC or Type ADS-40FSG-19 19025GPG-1, manufactured by SHENZHEN HONOR ELECTRONIC or Type ADS-40FSG-19 19025GPBR-1, manufactured by SHENZHEN HONOR ELECTRONIC or Type ADS-40FSG-19 19025GPI-1, manufactured by SHENZHEN HONOR ELECTRONIC or Type ADS-40FSG-19 19025GPCU-1, manufactured by SHENZHEN HONOR ELECTRONIC or Type ADS-40FSG-19 19025GPB-2, manufactured by SHENZHEN HONOR ELECTRONIC or Type LCAP21, manufactured by LIEN CHANG ELECTRONIC ENTERPRISE or Type LCAP26-A, manufactured by LIEN CHANG ELECTRONIC ENTERPRISE or Type LCAP26-E, manufactured by LIEN CHANG ELECTRONIC ENTERPRISE or Type LCAP26-I, manufactured by LIEN CHANG ELECTRONIC ENTERPRISE or Type LCAP26-B, manufactured by LIEN CHANG ELECTRONIC ENTERPRISE	
	<b>OUTPUT:</b> 19 V --- 1.3 A	
<b>Dimensions (Width x Height x Depth)</b>	<b>With Stand</b>	55.6 cm x 41.7 cm x 18.1 cm
	<b>Without Stand</b>	55.6 cm x 34.4 cm x 5.7 cm
<b>Weight</b>	3.0 kg	
<b>Tilt Range</b>	-5° to 20°	
<b>Environmental conditions</b>	<b>Operating Temperature</b>	10°C to 35 °C
	<b>Operating Humidity</b>	10 % to 80 %
	<b>Storage Temperature</b>	-20°C to 60 °C
	<b>Storage Humidity</b>	5 % to 90 % non-Condensing
<b>Stand Base</b>	Attached ( ), Detached (O)	
<b>Power cord</b>	Wall-outlet type	

Product specifications shown above may be changed without prior notice due to upgrade of product functions.

\* The power consumption level can be different by operating condition and monitor setting.

\* The On mode power consumption is measured with ENERGY STAR® test standard.



			24M37A	24M37D/ 24MC37D	24M37H	24M37HQ
<b>Sync Input</b>	<b>Horizontal Frequency</b>	30 kHz to 83 kHz (Automatic)	•	•	•	•
		30 kHz to 61 kHz (Automatic)				
	<b>Vertical Frequency</b>	56 Hz to 75 Hz (D-SUB)	•	•	•	•
		56 Hz to 75 Hz (DVI-D)		•		
		56 Hz to 61 Hz (HDMI)			•	•
	<b>Input Form</b>	Separate Sync.	•	•	•	•
		Digital		•	•	•
<b>Video Input</b>	<b>Signal Input</b>	15 pin D-SUB Connector	•	•	•	•
		DVI-D Connector (Digital)		•		
		HDMI Connector			•	•
	<b>Input Form</b>	RGB Analog (0.7 Vp-p/ 75 ohm)	•	•	•	•
		Digital		•	•	•
<b>Plug &amp; Play</b>	DDC 2B(Analog)		•	•	•	•
	DDC 2B(Digital)			•		
	DDC 2B(HDMI)				•	•

# SPECIFICATIONS

27M37D

27MP37HQ

27MP37VQ

27MC37HQ

27MP36HQ

<b>Display</b>	<b>Screen Type</b>	Flat Panel Active matrix-TFT LCD Anti-Glare coating
	<b>Pixel Pitch</b>	0.311 mm x 0.311 mm (Pixel Pitch)
<b>Resolution</b>	<b>Max</b>	1920 x 1080 @ 60 Hz
	<b>Recommend</b>	VESA 1920 x 1080 @ 60 Hz
<b>Power Consumption</b>	On Mode : 27 W (ENERGY STAR® standard)* Sleep Mode ≤ 0.3 W Off Mode ≤ 0.3 W	
<b>Power Input</b>	19 V --- 1.6 A	
<b>AC-DC Adapter</b>	Type ADS-40SG-19-3 19032G, manufactured by SHENZHEN HONOR ELECTRONIC or Type ADS-40FSG-19 19032GPG-1, manufactured by SHENZHEN HONOR ELECTRONIC or Type ADS-40FSG-19 19032GPBR-1, manufactured by SHENZHEN HONOR ELECTRONIC or Type ADS-40FSG-19 19032GPI-1, manufactured by SHENZHEN HONOR ELECTRONIC or Type ADS-40FSG-19 19032GPCU-1, manufactured by SHENZHEN HONOR ELECTRONIC or Type LCAP21A, manufactured by LIEN CHANG ELECTRONIC ENTERPRISE or Type LCAP26A-A, manufactured by LIEN CHANG ELECTRONIC ENTERPRISE or Type LCAP26A-E, manufactured by LIEN CHANG ELECTRONIC ENTERPRISE or Type LCAP26A-I, manufactured by LIEN CHANG ELECTRONIC ENTERPRISE or Type LCAP26A-B, manufactured by LIEN CHANG ELECTRONIC ENTERPRISE <b>OUTPUT: 19 V --- 1.7 A</b>	
<b>Dimensions (Width x Height x Depth)</b>	<b>With Stand</b>	64.1 cm x 48.8 cm x 21.2 cm
	<b>Without Stand</b>	64.1 cm x 39.3 cm x 7.1 cm
<b>Weight</b>	4.8 kg	
<b>Tilt Range</b>	-5° to 20°	
<b>Environmental conditions</b>	<b>Operating Temperature</b>	10°C to 35 °C
	<b>Operating Humidity</b>	10 % to 80 %
	<b>Storage Temperature</b>	-20°C to 60 °C
	<b>Storage Humidity</b>	5 % to 90 % non-Condensing
<b>Stand Base</b>	Attached ( ), Detached (O)	
<b>Power cord</b>	Wall-outlet type	

Product specifications shown above may be changed without prior notice due to upgrade of product functions.

\* The power consumption level can be different by operating condition and monitor setting.

\* The On mode power consumption is measured with ENERGY STAR® test standard.

			27M37D	27MP37HQ/ 27MC37HQ/ 27MP36HQ	27MP37VQ
<b>Sync Input</b>	<b>Horizontal Frequency</b>	30 kHz to 83 kHz (Automatic)	•	•	•
		30 kHz to 61 kHz (Automatic)			
	<b>Vertical Frequency</b>	56 Hz to 75 Hz (D-SUB)	•	•	•
		56 Hz to 75 Hz (DVI-D)	•		•
		56 Hz to 61 Hz (HDMI)		•	•
	<b>Input Form</b>	Separate Sync.	•	•	•
		Digital	•	•	•
<b>Video Input</b>	<b>Signal Input</b>	15 pin D-SUB Connector	•	•	•
		DVI-D Connector (Digital)	•		•
		HDMI Connector		•	•
	<b>Input Form</b>	RGB Analog (0.7 Vp-p/ 75 ohm)	•	•	•
		Digital	•	•	•
<b>Plug &amp; Play</b>	DDC 2B(Analog)		•	•	•
	DDC 2B(Digital)		•		•
	DDC 2B(HDMI)			•	•

## Preset Modes (Resolution)

### D-SUB/DVI-D Timing

19M37A

19M37D

19M37H

Display Modes (Resolution)	Horizontal Frequency(kHz)	Vertical Frequency(Hz)	Polarity(H/V)	
720 x 400	31.468	70	-/+	
640 x 480	31.469	60	-/-	
640 x 480	37.500	75	-/-	
800 x 600	37.879	60	+/+	
800 x 600	46.875	75	+/+	
832 x 624	49.725	75	-/-	
1024 x 768	48.363	60	-/-	
1366 x 768	47.712	60	+/+	Recommend Mode

20M37A

20M37D

20M37H

20MP37A

Display Modes (Resolution)	Horizontal Frequency(kHz)	Vertical Frequency(Hz)	Polarity(H/V)	
720 x 400	31.468	70	-/+	
640 x 480	31.469	60	-/-	
640 x 480	37.500	75	-/-	
800 x 600	37.879	60	+/+	
800 x 600	46.875	75	+/+	
1024 x 768	48.363	60	-/-	
1024 x 768	60.023	75	+/+	
1152 x 864	67.500	75	+/+	
1600 x 900	60.000	60	+/+	Recommend Mode

22M37A

22M37D

22M37H

22M37HQ

24M37A

24M37D

27MP36HQ

24M37H

24M37HQ

27M37D

27MP37HQ

27MP37VQ

22MC37D

24MC37D

27MC37HQ

Display Modes (Resolution)	Horizontal Frequency(kHz)	Vertical Frequency(Hz)	Polarity(H/V)	
720 x 400	31.468	70	-/+	
640 x 480	31.469	60	-/-	
640 x 480	37.500	75	-/-	
800 x 600	37.879	60	+/+	
800 x 600	46.875	75	+/+	
1024 x 768	48.363	60	-/-	
1024 x 768	60.023	75	+/+	
1152 x 864	67.500	75	+/+	
1280 x 1024	63.981	60	+/+	
1280 x 1024	79.976	75	+/+	
1680 x 1050	65.290	60	-/+	
1920 x 1080	67.500	60	+/+	Recommend Mode

## HDMI Timing

19M37H	20M37H	22M37H	22M37HQ	27MP36HQ
24M37H	24M37HQ	27MP37HQ	27MP37VQ	27MC37HQ

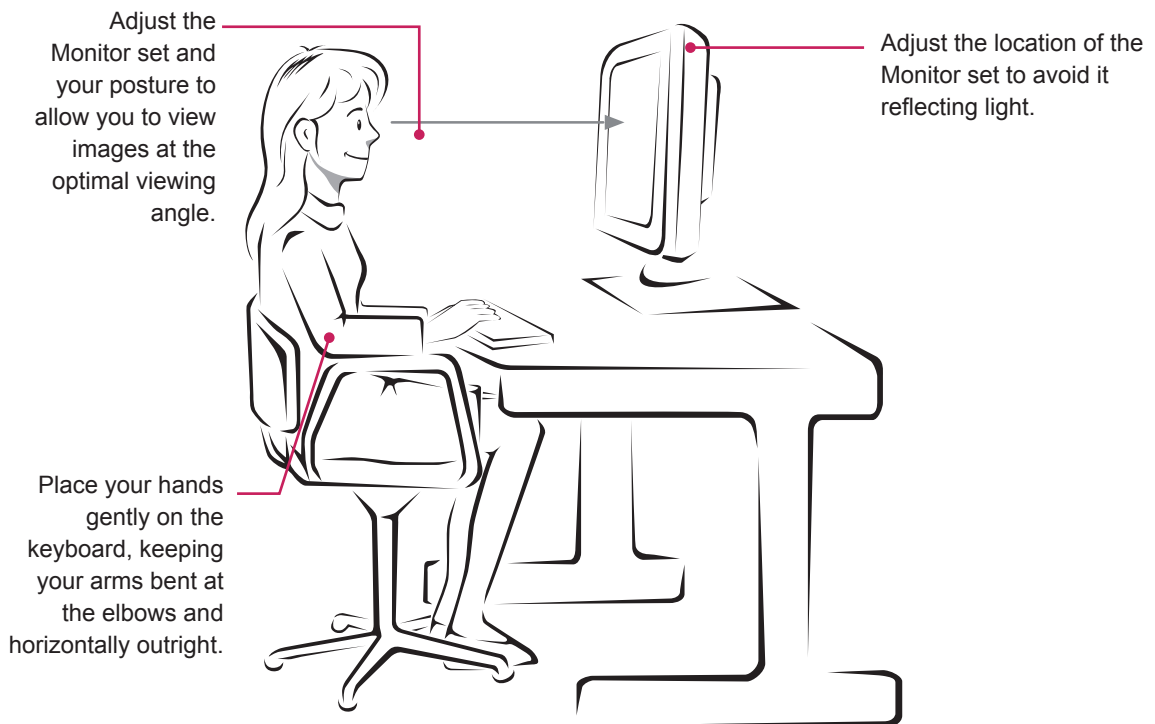
Factory support mode (Preset Mode)	Horizontal Frequency(kHz)	Vertical Frequency(Hz)	HDMI
480P	31.50	60	O
576P	31.25	50	O
720P	37.50	50	O
720P	45.00	60	O
1080P	56.25	50	O
1080P	67.50	60	O Recommend Mode

## Indicator

Mode	LED Color
On Mode	White (Only 15 seconds)
Sleep Mode	Blinking White
Off Mode	Off

# PROPER POSTURE

## Proper posture for using the Monitor set.



**Declaration of Conformity**

Trade Name: LG

Model : 19M37A, 19M37D, 19M37H, 20M37A,  
20M37D, 20M37H, 20MP37A, 22M37A,  
22M37D, 22MC37D, 22M37H, 22M37HQ,  
24M37A, 24M37D, 24MC37D, 24M37H,  
24M37HQ, 27M37D, 27MP37HQ,  
27MP37VQ, 27MC37HQ, 27MP36HQ

Responsible Party: LG Electronics Inc.

Address : 1000 Sylvan Ave. Englewood Cliffs  
NJ 07632 U.S.A

TEL: 201-266-2534

\*above information is only for USA FCC Regulatory

Make sure to read the Safety Precautions before using the product.

Keep the Owner's Manual (CD) in an accessible place for future reference.

The model and serial number of the SET is located on the back and one side of the SET. Record it below should you ever need service.

MODEL \_\_\_\_\_

SERIAL \_\_\_\_\_