

LG TV Stand Installation Guide for Sound Bar (SK10Y)

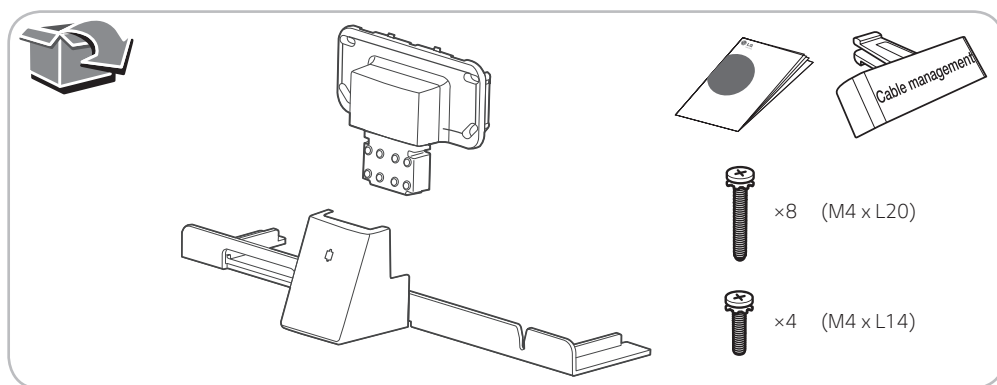
MODEL
TK10



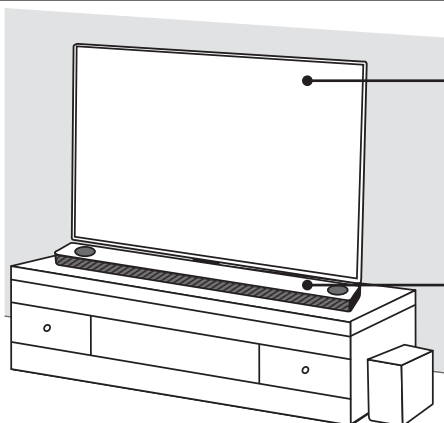
ENGLISH	ČESKY	SLOVENŠČINA
DEUTSCH	SLOVENČINA	SHQIP
FRANÇAIS	POLSKI	BOSANSKI
NEDERLANDS	ROMÂNĂ	SVENSKA
ITALIANO	LATVIEŠU	DANSK
ESPAÑOL	HRVATSKI	NORSK
ΕΛΛΗΝΙΚΑ	SRPSKI	SUOMI
PORTUGUÊS	БЪЛГАРСКИ	МАКЕДОНСКИ
MAGYAR		

www.lg.com

Copyright © 2018 LG Electronics Inc. All Rights Reserved.



CHECK



LG TV (Compatible TV models)

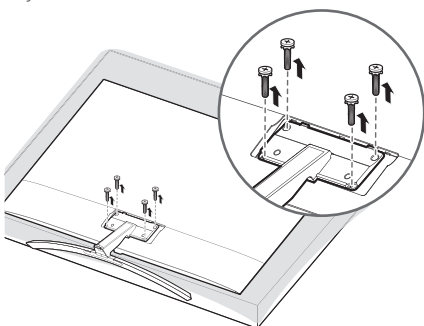
- OLED65/55C8
- OLED65/55B8
- 65/55SK95
- 65/55SK85

LG Sound Bar

SK10Y

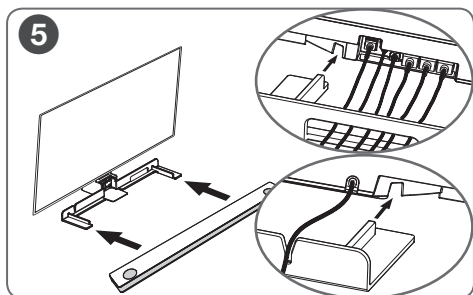
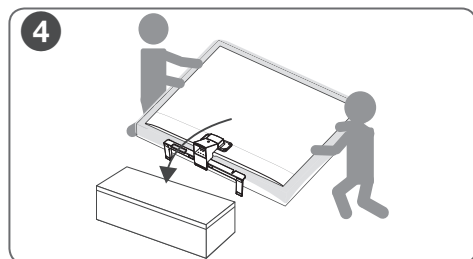
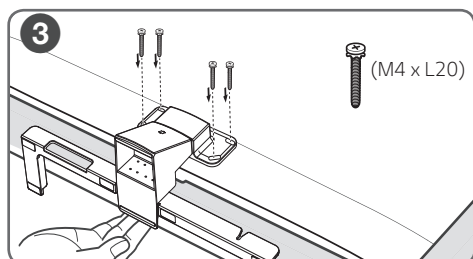
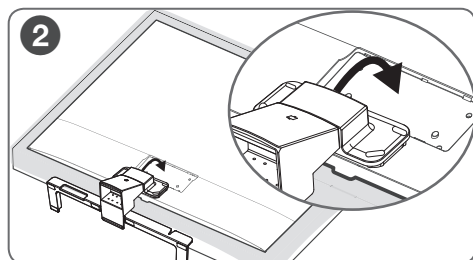
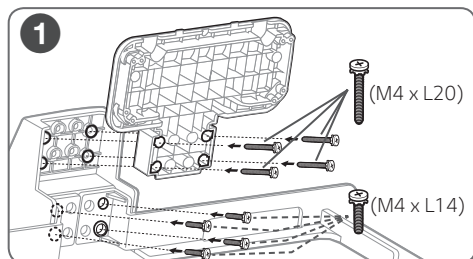


Before installation, you have to detach TV's stand and retain it separately if your TV has been installed with the stand. When you are detaching the stand, please refer to the instruction manual of your TV.

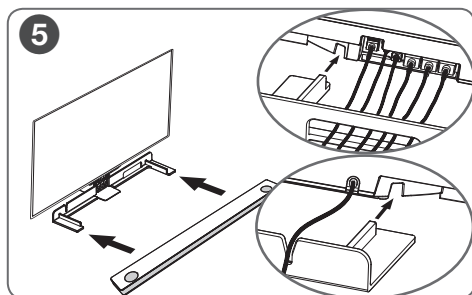
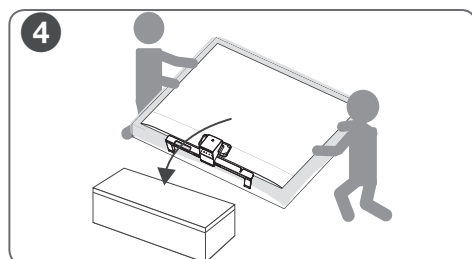
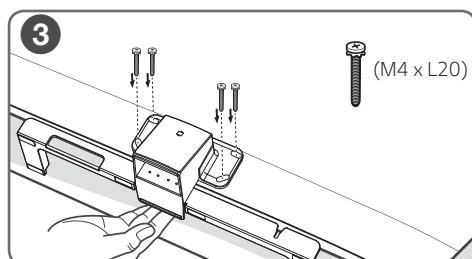
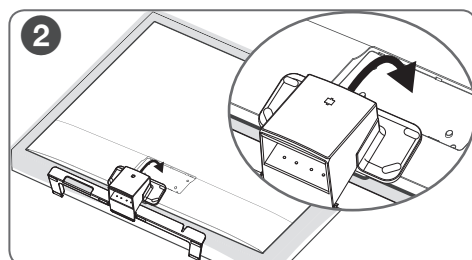
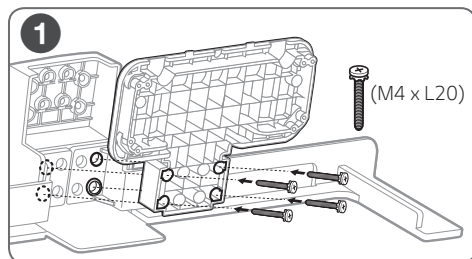


- When detaching or attaching the stand of the TV, place the screen facing down on a cushioned table or flat surface to protect the screen from scratches and damages.
- Make sure that the screws are fastened tightly. (If they are not fastened securely enough, the TV may tilt forward after being installed.)
- After arranging the cables, install the sound bar.

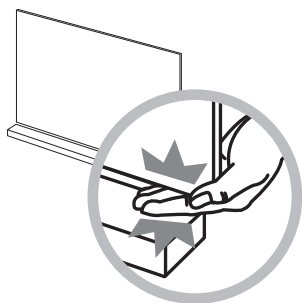
Installation (SK95/SK85)



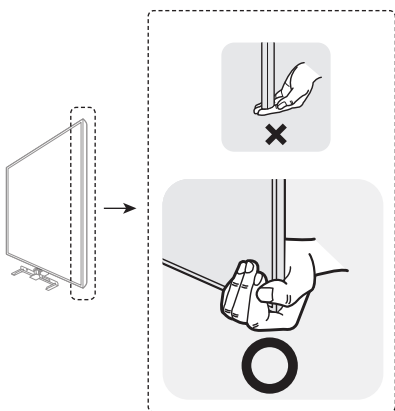
Installation (C8/B8)



CAUTION for moving a TV

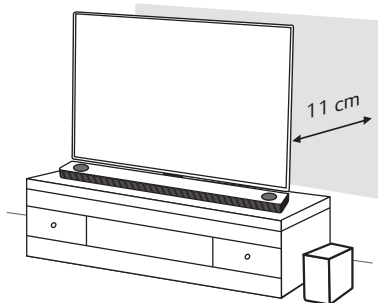


Be sure to remove the Sound Bar when moving the TV.

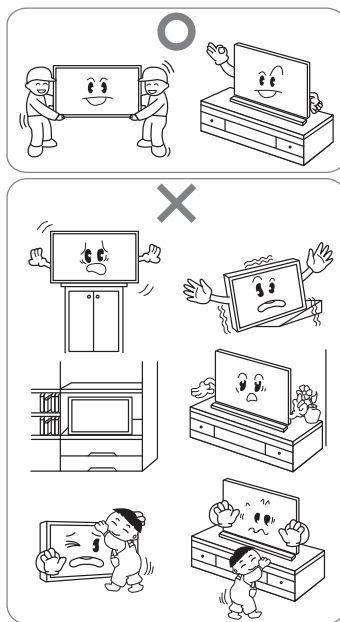


Positioning

For safety installation, there should be enough space between the wall and the installed product.



CAUTION



Cable management

You can arrange the cables behind of your TV by using a supplied cable management clip.

