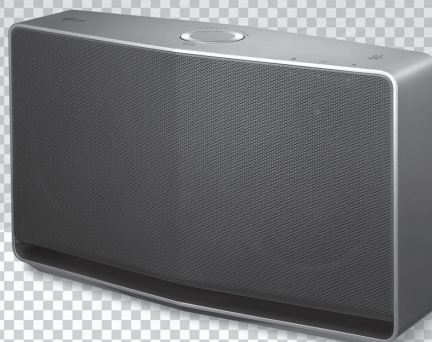




MUSICflow H7 / H5

SMART Hi-Fi AUDIO
Wireless Multi-room

Model : NP8740 (H7)
NP8540 (H5)



MFL68584125

To view the instructions of advanced features, visit <http://www.lg.com> and then download Owner's Manual. Some of the content in this manual may differ from your speaker.

Step 1. Unpacking

Step 2. Getting Started

- ❶ Make sure that wireless network environment using a router is installed at your home.
 - ❷ Connect your smart device to your home network.
 - ❸ Connect the speaker to the power supply with the supplied AC adapter.
- ❹ Note
- The wireless router should be connected to the internet.
 - Wireless signal interference may lead to disconnection of network or stopping playback.
 - Depending on the speed of your network, playback of online contents may not work well.

Step 3. Installing "Music Flow Player" App

Download "Music Flow Player" on the iTunes store or Google Play Store.

- A** Type "Music Flow Player" in the search bar and tap "Search".
- B** Scan the QR code using the scanning application.

❹ Note

- Depending on the device, "Music Flow Player" app may not work.
- Music Flow Player app will be available in version of the software as follow;
Android O/S : Ver 2.3.3 (or later) iOS O/S : Ver 5.1.1 (or later)

Tip

Media server software allows you to access audio files stored in media server and enjoy them on your speaker via home networking. On www.lg.com website, type model name (NP8740 or NP8540) in the search bar and find media server software on support tab.

- Windows : Music Flow PC Software
- Mac OS : Nero MediaHome 4 Essentials

Step 4. Network Connection

Option 1. Wired Connection

On Music Flow Player app, select [Wired connection] and follow the directions on screen.

Option 2. Wireless Connection

On Music Flow Player app, select [Wireless connection] and follow the directions on screen.

❹ Note

- You need to turn the speaker's power off and on again if you restart the router.
- You need to perform a factory set and setup the network connection for speaker, if you install new router.

Step 5. Music Playback

Playing a song on this device

Group Playback (Optional)

Any number of speakers can be grouped together to play the same music in synchrony.

1. Adding another LG SMART Hi-Fi AUDIO

- When you enjoy the group playback, at least one speaker or LG R1 bridge (optional) should be connected by LAN cable.
- If the speakers are connected only wirelessly, disconnect all the wireless connections and reconnect them after connecting one wired.

2. Grouping

On Music Flow Player app, select [Connected Speakers] and follow the directions on screen.


❗ Note

- If the speakers are not grouped, you can enjoy different music on each speaker.
- For smooth group playback, it is recommended to select the speaker connected by LAN cable as a master speaker.
- The weak signal because of the long distance between speakers or wireless router and signal interference may cause abnormal playback.

Bluetooth Connection

1. Select the Bluetooth mode with **⏻/I/F** button on the speaker.
2. On your Bluetooth device, make sure that Bluetooth is on and select "Music Flow H5 (or H7) (XX.XX)".
3. Play music on your Bluetooth device.

NFC for Easy Pairing (Android Only)

You can pair simply and easily by tagging on the  mark.

❗ Note

When you are enjoying the music with Music Flow Player app, seamless playback is activated instead of BT pairing.

External Device Connection

Portable cable (Not included)

Reset the Speaker


1. Initializing the network settings

Press and hold **ADD** button until you hear the beep sound once. Then all wireless network ports are deactivated and delete the stored wireless network information.

2. Factory Set

Press and hold **ADD** button until you hear the beep sound twice.

Specification

Power Supply	18 V  2.67 A (AC adapter : DA-48A18)
Power consumption	NP8740 : 12 W / NP8540 : 10 W
	Networked standby : 5.4 W (If all network ports are activated.)
Dimensions (W x H x D)	NP8740 : Approx. 370 x 232 x 110 mm without foot
	NP8540 : Approx. 340 x 207 x 88 mm without foot
Net Weight (Approx.)	NP8740 : 4.1 kg / NP8540 : 3.25 kg

Design and specifications are subject to change without notice.

❗ Note

Some of the content in this manual may differ from Music Flow Player app depending on the application's version.



CAUTION: TO REDUCE THE RISK OF ELECTRIC SHOCK DO NOT REMOVE COVER (OR BACK) NO USER-SERVICEABLE PARTS INSIDE REFER SERVICING TO QUALIFIED SERVICE PERSONNEL.



This lightning flash with arrowhead symbol within an equilateral triangle is intended to alert the user to the presence of uninsulated dangerous voltage within the product's enclosure that may be of sufficient magnitude to constitute a risk of electric shock to persons.



The exclamation point within an equilateral triangle is intended to alert the user to the presence of important operating and maintenance (servicing) instructions in the literature accompanying the product.

WARNING: TO PREVENT FIRE OR ELECTRIC SHOCK HAZARD, DO NOT EXPOSE THIS PRODUCT TO RAIN OR MOISTURE.

WARNING: Do not install this equipment in a confined space such as a book case or similar unit.

CAUTION: The apparatus shall not be exposed to water (dripping or splashing) and no objects filled with liquids, such as vases, shall be placed on the apparatus.

CAUTION: Do not block any ventilation openings. Install in accordance with the manufacturer's instructions.

Slots and openings in the cabinet are provided for ventilation and to ensure reliable operation of the product and to protect it from over heating. The openings shall be never be blocked by placing the product on a bed, sofa, rug or other similar surface. This product shall not be placed in a built-in installation such as a bookcase or rack unless proper ventilation is provided or the manufacturer's instruction has been adhered to.

CAUTION concerning the Power Cord

To disconnect power from the mains, pull out the mains cord plug. When installing the product, ensure that the plug is easily accessible.

NOTICE: For safety marking information including product identification and supply ratings, please refer to the main label on the bottom or rear of the apparatus.

CAUTION: Only use the AC adapter supplied with this device. Do not use a power supply from another device or manufacturer. Using any other power cable or power supply may cause damage to the device and void your warranty.

IMPORTANT SAFETY INSTRUCTIONS

1. Read these instructions.
2. Keep these instructions.
3. Heed all warnings.
4. Follow all instructions.
5. Do not use this apparatus near water.
6. Clean only with dry cloth.
7. Do not block any ventilation openings. Install in accordance with the manufacturer's instructions.
8. Do not install near any heat sources such as radiators, heat registers, stoves, or other apparatus (including amplifiers) that produce heat.
9. Do not defeat the safety purpose of the polarized or grounding-type plug. A polarized plug has two blades with one wider than the other. A grounding type plug has two blades and a third grounding prong. The wide blade or the third prong are provided for your safety. If the provided plug does not fit into your outlet, consult an electrician for replacement of the obsolete outlet.
10. Protect the power cord from being walked on or pinched particularly at plugs, convenience receptacles, and the point where they exit from the apparatus.
11. Only use attachments/accessories specified by the manufacturer.
12. Use only with the cart, stand, tripod, bracket, or table specified by the manufacturer, or sold with the apparatus. When a cart is used, use caution when moving the cart/apparatus combination to avoid injury from tip-over.
13. Unplug this apparatus during lightning storms or when unused for long periods of time.
14. Refer all servicing to qualified service personnel. Servicing is required when the apparatus has been damaged in any way, such as power-supply cord or plug is damaged, liquid has been spilled or objects have fallen into the apparatus, the apparatus has been exposed to rain or moisture, does not operate normally, or has been dropped.

