

SIMPLE MANUAL

Wireless Sound Bar

Please read this manual carefully before operating your set and retain it for future reference.

To view the instructions of advanced features, visit <http://www.lg.com> and then download Owner's Manual. Some of the content in this manual may differ from your unit.

MODEL
SJ2



www.lg.com

Copyright © 2021 LG Electronics Inc. All Rights Reserved.

2107_Rev01



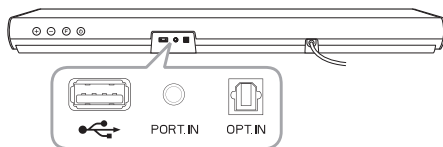
Front Panel

The buttons are located on the rear.



- Standby
- Selects Function.
- Adjusts Volume.

Rear Panel



- (USB) Connect to a USB device.
- PORT. IN (Portable) ... Connect to a Portable device.
- OPT. IN (Optical) Connect to an Optical device.

1

Subwoofer Connection

Place the wireless subwoofer near the sound bar and follow steps below.

- 1 Connect the power cord of the sound bar and the wireless subwoofer to the outlet.
- 2 Turn on the sound bar.
- 3 The sound bar and wireless subwoofer will be **automatically** connected. The subwoofer's green LED turns on.

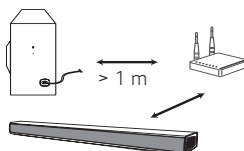
Manual Subwoofer Connection

If the subwoofer does not make sound, try to connect manually.

- 1 Press **Pairing** button on the rear of the wireless subwoofer.
 - The green LED on the rear of the wireless subwoofer blinks quickly.
(If the green LED does not blink, press and hold the **Pairing** button.)
- 2 Turn on the sound bar.
- 3 Pairing is completed.
 - The green LED on the rear of the wireless subwoofer turns on.

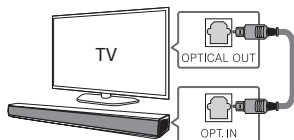


Keep the sound bar and the subwoofer away from the device (ex. wireless router, microwave oven, etc.) over 1 m to prevent wireless interference.



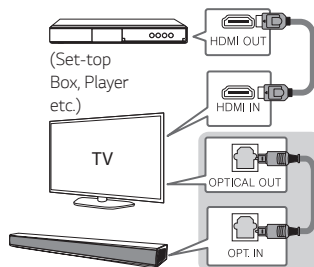
2 TV Connection

- 1 Connect the sound bar to the TV using an Optical cable.
- 2 Set up [External Speaker (Optical)] on your TV setting menu.



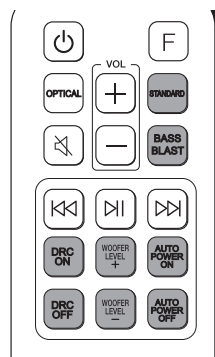
Additional Device Connection

- 1 Connect to the external device as follows.



- 2 Set the input source by pressing **OPTICAL** on the remote control or pressing **F** repeatedly.

Remote control



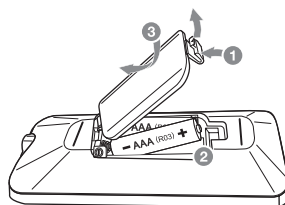
STANDARD/BASS BLAST: Selects the sound effect.

DRC ON/OFF: Dynamic Range Control optimizes the volume level of compatible Dolby Digital content.

WOOFER LEVEL +/-: Adjusts the volume level of subwoofer.

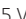
AUTO POWER ON/OFF: Automatically turns on by an input source.

Replacement of battery



Additional Information

Specification

Power requirements	Refer to the main label.
	Refer to the main label.
Power consumption	Networked standby : 0.5 W (If all network ports are activated.)
Dimensions (W x H x D)	Approx. 660.0 mm x 56.0 mm x 99.0 mm With foot
Bus Power Supply (USB)	5 V  500 mA
Amplifier (Total RMS Output power)	160 W RMS

Design and specifications are subject to change without notice.

How to disconnect the wireless network connection or the wireless device

Set up the AUTO POWER ON/OFF function to off and turn off the unit.

Declaration of Conformity



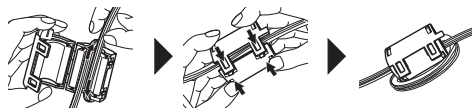
Hereby, LG Electronics declares that the radio equipment type Wireless Sound Bar is in compliance with Directive 2014/53/EU. The full text of the EU declaration of conformity is available at the following internet address:

<http://www.lg.com/global/support/cedoc/cedoc#>

For consideration of the user, this device should be installed and operated with a minimum distance of 20 cm between the device and the body.

Frequency range	Output power (Max.)
2402 to 2480 MHz	10 dBm
5730 to 5850 MHz	13.35 dBm

About Ferrite Core (Optional)



Wind power cord cable around the ferrite core twice.