



SIMPLE MANUAL

Sound Bar

Please read this manual carefully before operating your set and retain it for future reference. To view the instructions of advanced features, visit <http://www.lg.com> and then download Owner's Manual. Some of the content in this manual may differ from your unit.

MODEL
SH2



www.lg.com

Copyright © 2017 LG Electronics. All Rights Reserved

ENGLISH

DEUTSCH

FRANÇAIS

NEDERLANDS

SLOVENŠČINA

ITALIANO

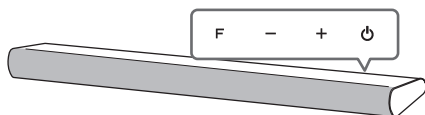
ESPAÑOL

ΕΛΛΗΝΙΚΑ

PORTUGUÊS



Front Panel

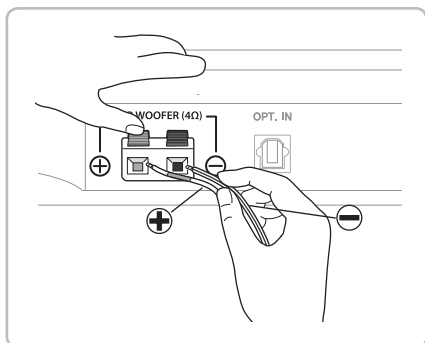


- F** Selects Function
- +** Adjusts Volume
- Power** Power On/Off

1 Subwoofer Connection

Place the subwoofer near the sound bar and follow steps below.

- 1 Press each plastic finger pad to open subwoofer terminals on the unit.
- 2 Connect the black stripe wire to the terminal marked - (minus) and the other end to the terminal (red tube) marked + (plus).

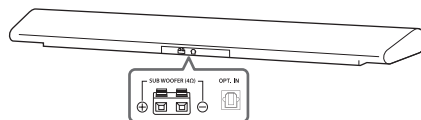


Controller App



Download the **Music Flow Bluetooth** App to your device.

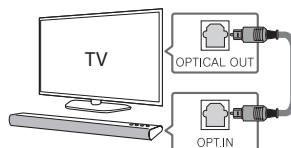
Rear Panel



SUB WOOFER (4Ω) Connect to a Subwoofer
OPT. IN Connect to an Optical device

2 TV Connection

- 1 Connect the sound bar to the TV using Optical cable.
- 2 Set up [External Speaker (Optical)] on your TV setting menu.



LG Sound Sync (Wireless)



For more information, download the online owner's manual. <http://www.lg.com>

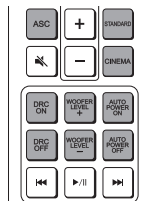
Additional Information

Specification

Power requirements	Refer to the main label.
	Refer to the main label.
Power consumption	Networked standby : 0.5 W (If all network ports are activated.)
Dimensions (W x H x D)	Approx. 880 mm x 62 mm x 90 mm
Net Weight	Approx. 1.8 kg
Amplifier (Total RMS Output power)	100 W

Design and specifications are subject to change without notice.

Remote control



ASC/STANDARD/CINEMA : Selects sound effect.

*ASC : Adaptive Sound Control

DRC ON/OFF : Makes comfortable sound at Dolby Digital.

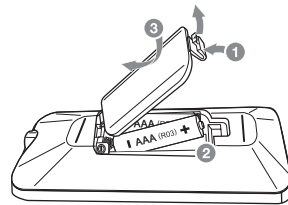
WOOFER LEVEL+/- : Adjusts the volume level of subwoofer.

AUTO POWER ON/OFF : Automatically turns on by an input source : Optical, **Bluetooth**, LG TV

How to disconnect the wireless network connection or the wireless device

Set up the AUTO POWER ON/OFF function to off and turn off the unit.

Replacement of battery



Declaration of Conformity



Hereby, LG Electronics declares that the radio equipment type Sound Bar is in compliance with Directive 2014/53/EU. The full text of the EU declaration of conformity is available at the following internet address:

<http://www.lg.com/global/support/cedoc/cedoc#>

For consideration of the user, this device should be installed and operated with a minimum distance of 20 cm between the device and the body.

Frequency range	Output power (Max.)
2402 to 2480 MHz	10 dBm

