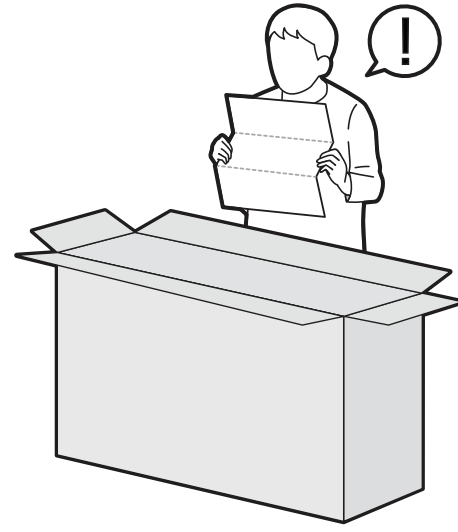
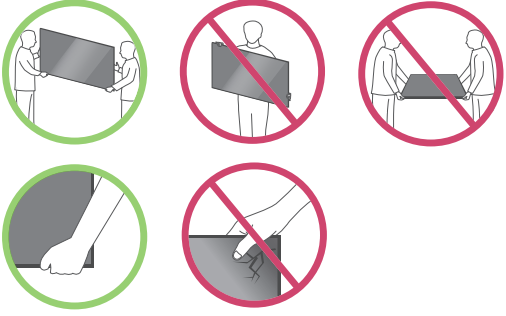
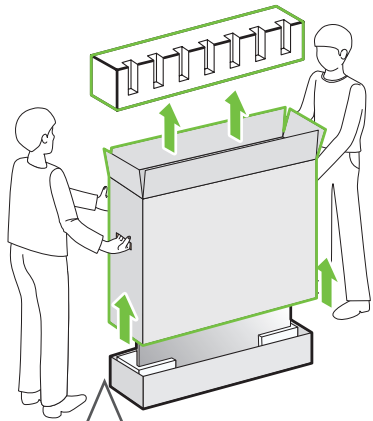


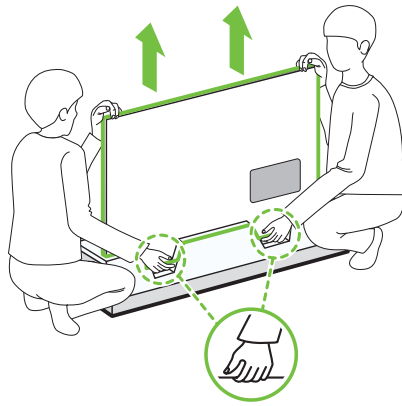
75UP7500PSC  
75UP7550PSC



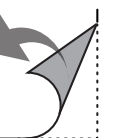
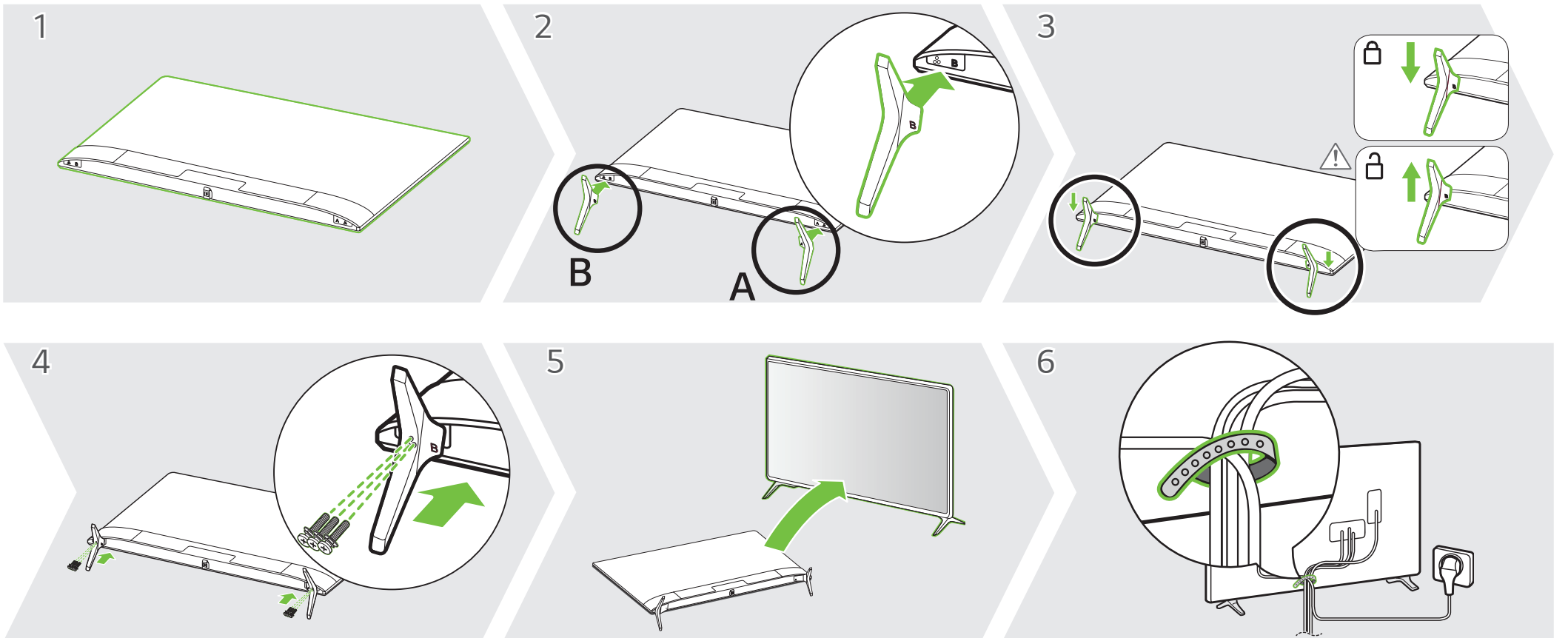
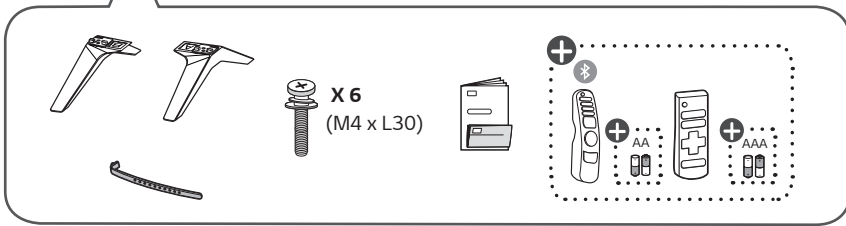
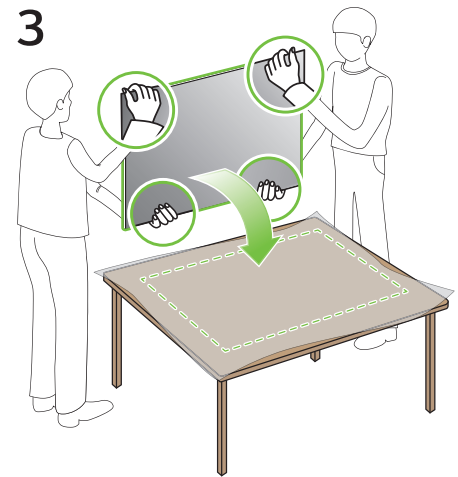
1



2



3





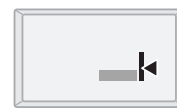
OPTICAL DIGITAL AUDIO OUT



LAN



ANTENNA / CABLE IN



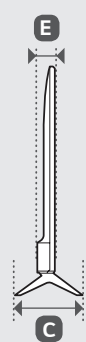
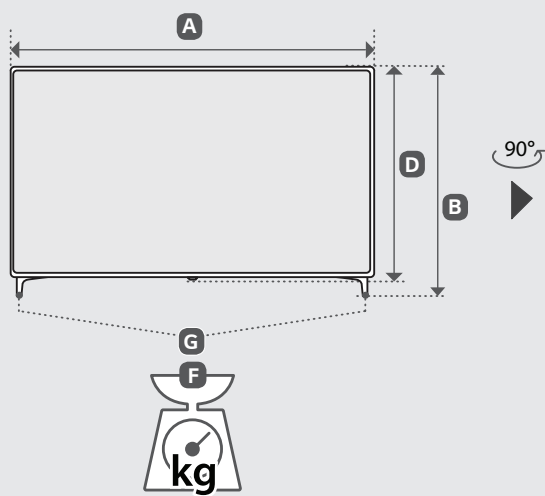
HDMI IN



HDMI IN eARC/ARC



USB IN



| MODELS                                     | A     |       | B     |       | C   |     | D   |     | E    |                              | F    |      | F-G  |      | Power consumption |                     |
|--|-------|-------|-------|-------|-----|-----|-----|-----|------|------------------------------|------|------|------|------|-------------------|---------------------|
| MODELOS                                    | (mm)  |       |       |       |     |     |     |     |      |                              |      |      |      |      | (kg)              | Consumo de potencia |
| 75UP7500PSC                                | 1,693 | 1 693 | 1,048 | 1 048 | 345 | 345 | 978 | 978 | 88.8 | 88.8                         | 35.4 | 35,4 | 34.6 | 34,6 | 240 W             |                     |
| 75UP7550PSC                                |       |       |       |       |     |     |     |     |      |                              |      |      |      |      |                   |                     |
| Power requirement / Alimentación requerida |       |       |       |       |     |     |     |     |      | AC 100 V - 240V - 50 / 60 Hz |      |      |      |      |                   |                     |



**ENGLISH** Read **Safety and Reference**.  
Due to environmental government regulations about imports and battery destruction in Colombia, TVs will not include the batteries for the remote control.

**ESPAÑOL** Leer **Seguridad y Consultas**.  
Por regulaciones de tipo ambiental respecto a la importación y destrucción de baterías en Colombia; los televisores no van a traer incluidas las pilas del control remoto.

**ENGLISH**  
**Easy Setup Guide**  
Please read this manual carefully before operating your set and retain it for future reference.

**ESPAÑOL**  
**Guía Rápida de Configuración**  
Lea atentamente este manual antes de poner en marcha el equipo y consérvelo para futuras consultas.

⊕ : Depending upon model / Según el modelo