



SIMPLE MANUAL

Wireless Sound Bar



To view the instructions of advanced features,
visit <http://www.lg.com> and then download Owner's Manual.
Some of the content in this manual may differ from your unit.

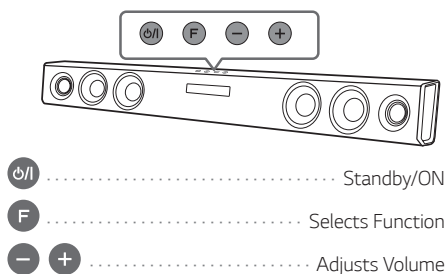
MODEL
SH3B



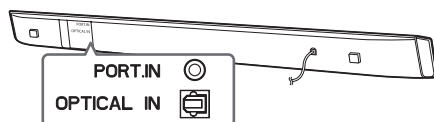
www.lg.com



Front Panel



Rear Panel



1

Subwoofer Connection

Place the wireless subwoofer near the sound bar and follow steps below.

- 1 Connect the power cord of wireless subwoofer to the outlet.
- 2 Turn on the sound bar :
The sound bar and wireless subwoofer will be **automatically** connected. The subwoofer's yellow - green LED turns on.

Subwoofer Connection Manually

- 1 Reset the subwoofer
If the yellow - green LED on the subwoofer blinks quickly, skip this step and go to 2
 - Press and hold **PAIRING** button for 5 seconds.
 - The LED lights up alternately in red and yellow - green.
 - Plug out the power cord. After the LED turns off completely, plug in the power cord again.

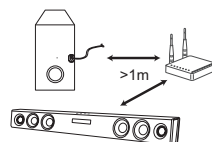
When the reset is completed, the subwoofer's yellow - green LED blinks quickly.

- 2 Reset the sound bar
 - Adjust volume to minimum until the red LED on the sound bar lights up for a while.
 - Press and hold **Mute** button on the remote control for 3 seconds.
 - The red LED on the sound bar blinks quickly.
 - Turn the sound bar's power off and on while the subwoofer's yellow - green LED blinks.

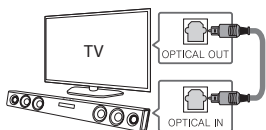
When the connection is completed, you can see the yellow - green LED on the subwoofer.



Keep the sound bar and the subwoofer away from the device (ex. wireless router, microwave oven, etc.) over 1m to prevent wireless interference.

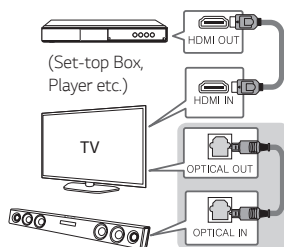


- 1 Connect the sound bar to the TV using Optical cable.
- 2 Set up [External Speaker (Optical)] on your TV setting menu.



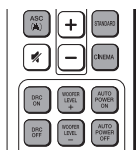
Additional Device Connection

- 1 Connect to the external device as follows.



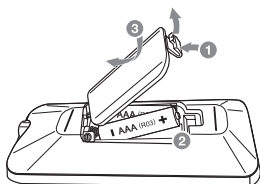
- 2 Set the input source by pressing **F** on the remote control or unit repeatedly.

Remote control



ASC/STANDARD/CINEMA : Selects sound effect.
 DRC ON/OFF : Makes comfortable sound at Dolby Digital.
 WOOFER LEVEL+/- : Adjusts the volume level of subwoofer.
 AUTO POWER ON/OFF : Automatically turns on by an input source.

Replacement of battery



Specification

Power requirements	Refer to the main label.
Power consumption	Refer to the main label. Networked standby : 0.5 W (If all network ports are activated.)
Dimensions (W x H x D)	Approx. 950 mm x 71 mm x 47 mm
Net Weight	Approx. 2.47 kg
Amplifier (Total RMS Output power)	300 W

Design and specifications are subject to change without notice.

How to disconnect the wireless network connection or the wireless device

Set up the AUTO POWER ON/OFF function to off and turn off the unit.

Declaration of Conformity

CE 0197

Hereby, LG Electronics European Shared Service Center B.V. declares that this Wireless Sound Bar is compliant with the essential requirements and other relevant provisions of Directive 1999/5/EC. The complete Declaration of Conformity may be requested through the following postal address:

LG Electronics European Shared Service Center B.V.
 Krijgsman 1
 1186 DM Amstelveen
 The Netherlands

or can be requested at our dedicated DoC website:

<http://www.lg.com/global/support/cedoc/cedoc#>

This device is a 2.4 GHz wideband transmission system, intended for use in all EU member states and EFTA countries.

