


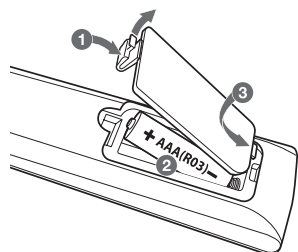
## Additional Information

### Specification

Power requirements	Refer to main label
Power consumption	Refer to main label
Dimensions (W x H x D)	Approx. 360 mm x 58 mm x 298.5 mm
Bus Power Supply (USB)	5 V  500 mA
Amplifier (Total RMS output power)	1,000 W RMS


Design and specifications are subject to change without notice.

### Replacement of battery



**POWER:** This unit operates on a mains supply of 200 - 240 V - 50 - 60 Hz.

**Wiring:** This unit is supplied with a BS 1363 approved main plug. When replacing the fuse, always use a fuse of the same rating and approved to BS 1362. Never use this plug with the fuse cover omitted. To obtain a replacement fuse cover contact your dealer. If the type of plug supplied is not suitable for the mains sockets in your home, then the plug should be removed and a suitable type fitted. Please refer to the wiring instructions below.

**Warning:** A mains plug removed from the mains lead of this unit must be destroyed. A mains plug with bared wires is hazardous if inserted in a mains socket. Do not connect either wire to the earth pin, marked with the letter E or with the earth symbol  or coloured green or green and yellow. If any other plug is fitted, use same rating of fuse in the plug.

**Important:** The wires in this mains lead are coloured in accordance with the following codes:

- **BLUE: NEUTRAL, BROWN: LIVE** - As the colours of the wires in the mains lead of this unit may not correspond with the coloured marking identifying the terminals in your plug, proceed as follows: The wire which is coloured blue must be connected to the terminal which is marked with the letter N or coloured black. The wire which is coloured brown must be connected to the terminal which is marked with the letter L or coloured red.



## SIMPLE MANUAL

# DVD Home Theater System

Please read this manual carefully before operating your set and retain it for future reference.

To view the instructions of advanced features, visit <http://www.lg.com> and then download Owner's Manual. Some of the content in this manual may differ from your unit.

MODEL

LHD647

**HDMI**  
HIGH-DEFINITION MULTIMEDIA INTERFACE

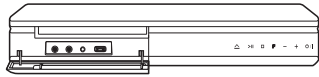


MFL71261803  
1906\_Rev01

[www.lg.com](http://www.lg.com)  
Copyright © 2019 LG Electronics Inc. All Rights Reserved.

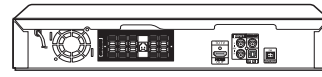


## Front Panel



- MIC 1/2 ..... Connect a microphone.
- PORT. IN ..... Connect to a Portable device.
- USB Port ..... Connect a USB device.
- △ ..... Disc Tray Open / Close
- >|| ..... Starts / Pauses playback.
- ..... Stops playback.
- F ..... Changes the input source or function.
- / + ..... Adjusts volume.
- ⏻ / ⏻ ..... Power On / Off

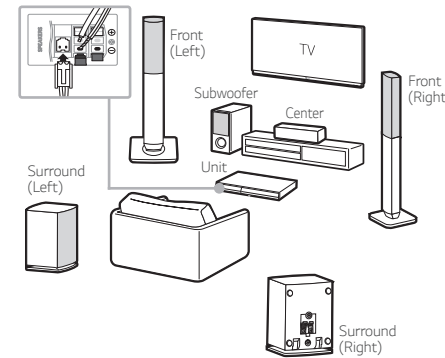
## Rear Panel



- SPEAKERS ..... Connect to speakers.
- HDMI OUT TO TV ..... Connect to TV.
- AUX (L/R) INPUT ..... Connect to analogue device.
- VIDEO OUT ..... Connect to TV.
- OPTICAL IN ..... Connect to digital device.
- ANTENNA FM ..... Connect to radio antenna.

## 3 Speaker Connection

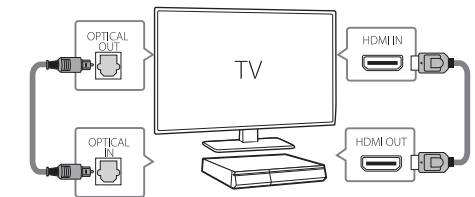
! Speaker design and connection method may be different according to models.



## 4 TV Connection

### HDMI & Optical Connection

- 1 Connect the Unit to the TV using HDMI & Optical cable.
- 2 Set the input selector to HDMI on the TV.
- 3 Set up [External Speaker (Optical)] on your TV setting menu.
- 4 Follow the instructions on the TV screen using remote control.



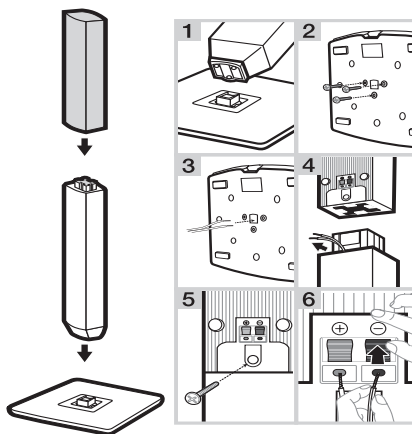
## 5 Home Menu

Home menu appears on the TV screen. Enjoy various functions on the unit.



For more information, download the online owner's manual. <http://www.lg.com>

## 1 Speaker Assembling

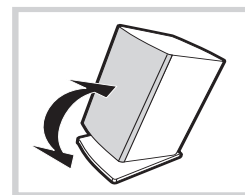


## 2 Speaker Installation

You can use the speaker in stand type (A) by adjusting the angle or wall type (B) by mounting the speaker to a wall.

### A Stand type

You can adjust angle of speaker.



### B Wall type (Mounting the speakers to a wall)

When you want to mount the speaker to a wall, please refer to below.

