

SIMPLE MANUAL

DVD Home Theater System

To view the instructions of advanced features,
visit <http://www.lg.com> and then download Owner's Manual.
Some of the content in this manual may differ from your unit.

MODEL
LHD756



www.lg.com

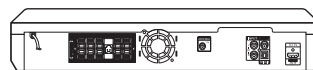


Front Panel



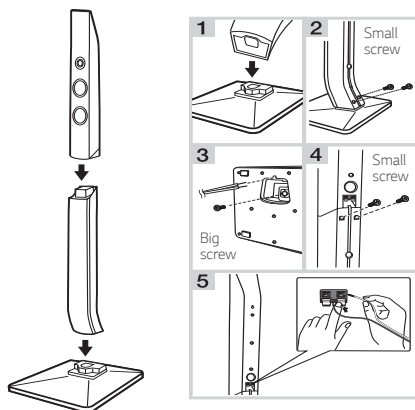
- MIC 1/2** Connect a microphone.
- PORT. IN** Connect to a Portable device.
- USB Port** Connect a USB device.
- △** Disc Tray Open / Close
- >||** Starts / Pauses playback.
- Stops playback.
- F** Changes the input source or function.
- / +** Adjusts volume.
- ⏻ / I** Power On / Off

Rear Panel



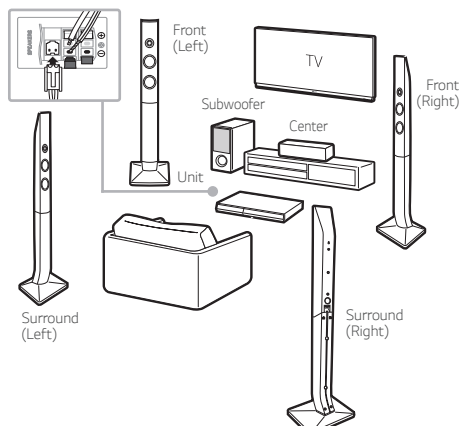
- SPEAKERS** Connect to speakers.
- ANTENNA FM** Connect to radio antenna.
- AUX (L/R) INPUT** Connect to analogue device.
- VIDEO OUT** Connect to TV.
- HDMI OUT TO TV** Connect to TV.
- OPTICAL IN** Connect to digital device.

1 Speaker Assembling



2 Speaker Connection

! Speaker design and connection method may be different according to models.

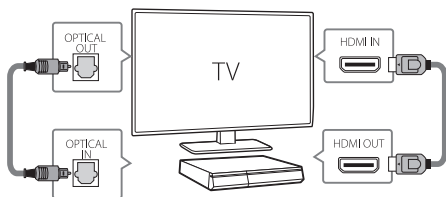


3

TV Connection

HDMI & Optical Connection

- 1 Connect the Player to the TV using HDMI & Optical cable.
- 2 Set the input selector to HDMI on the TV.
- 3 Set up [External Speaker (Optical)] on your TV setting menu.
- 4 Follow the instructions on the TV screen using remote control.



4

Home Menu


Home menu appears on the TV screen. Enjoy various functions on the player.



For more information, download the online owner's manual. <http://www.lg.com>

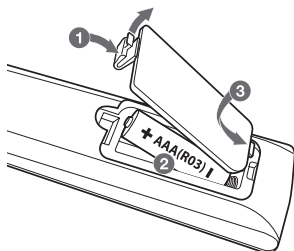
Additional Information

Specification

Power requirements	Refer to main label.
Power consumption	Refer to main label.
Dimensions (W x H x D)	Approx. 440 mm x 65 mm x 298 mm
Net Weight	Approx. 3.2 kg
Bus Power Supply (USB)	5 V  500 mA
Amplifier (Total RMS output power)	1,200 W


Design and specifications are subject to change without notice.

Replacement of battery



POWER: This unit operates on a mains supply of 200 - 240 V ~, 50 / 60 Hz.

Wiring: This unit is supplied with a BS 1363 approved main plug. When replacing the fuse, always use of the same rating approved to BS 1362. Never use this plug with the fuse cover omitted. To obtain a replacement fuse cover contact your dealer. If the type of plug supplied is not suitable for the mains sockets in your home, then the plug should be removed and a suitable type fitted. Please refer to the wiring instructions below:

Warning: A mains plug removed from the mains lead of this unit must be destroyed. A mains plug with bared wires is hazardous if inserted in a mains socket. Do not connect either wire to the earth pin, marked with the letter E or with the earth symbol  or coloured green or green and yellow. If any other plug is fitted, use same rating of fuse in the plug.

Important: The wires in this mains lead are coloured in accordance with the following codes:

- BLUE: NEUTRAL, BROWN: LIVE: As the colours of the wires in the mains lead of this unit may not correspond with the coloured marking identifying the terminals in your plug, proceed as follows: The wire which is coloured blue must be connected to the terminal which is marked with the letter N or coloured black. The wire which is coloured brown must be connected to the terminal which is marked with the letter L or coloured red.