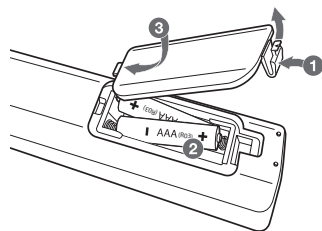


Additional Information

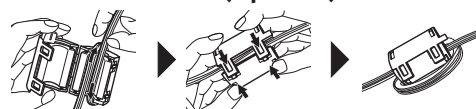
Caution

- When you use the multiple socket, it is advisable to use 15 A socket. 10 A socket may cause power off due to lack of power supply.
- Do not place objects on the speakers. It may cause the objects to fall and make property damage.
- Install the speakers on a firm surface not to slide. The vibration caused by the strong output can shake and move the speakers.
- Avoid turning up max volume in a small enclosed space. The powerful and intense output of the speakers can shake the ceiling and get the objects in the room falling.
- To protect from hearing damage, keep the sufficient distance from the speaker. The overwhelming sound from the speaker may cause a person's hearing damage.
- Allow more than 20 cm of free space between the main set and the speakers when you install the main set on the ground. High sound pressure from the speakers can make the set tremble to disturb the CD playback.
- Connect the power cord to wall outlet directly if possible. Or when you use an extension cable, it is highly recommended to use an extension cable of 110 V / 15 A or 230 V / 15 A, otherwise the unit may not operate properly because of the lack of power supply.
- Do not overload the extension cord with excessive electrical load.

Replacement of battery



About Ferrite Core (Optional)



Wind power cord cable around the ferrite core twice.

POWER: This unit operates on a mains supply of 200 - 240 V ~, 50 / 60 Hz.

Wiring: This unit is supplied with a BS 1363 approved main plug. When replacing the fuse, always use of the same rating approved to BS 1362. Never use this plug with the fuse cover omitted. To obtain a replacement fuse cover contact your dealer. If the type of plug supplied is not suitable for the mains sockets in your home, then the plug should be removed and a suitable type fitted. Please refer to the wiring instructions below.

Warning: A mains plug removed from the mains lead of this unit must be destroyed. A mains plug with bared wires is hazardous if inserted in a mains socket. Do not connect either wire to the earth pin, marked with the letter E or with the earth symbol \perp or coloured green or green and yellow. If any other plug is fitted, use same rating of fuse in the plug.

Important: The wires in this mains lead are coloured in accordance with the following codes:

- **BLUE: NEUTRAL, BROWN: LIVE** - As the colours of the wires in the mains lead of this unit may not correspond with the coloured marking identifying the terminals in your plug, proceed as follows: The wire which is coloured blue must be connected to the terminal which is marked with the letter N or coloured black. The wire which is coloured brown must be connected to the terminal which is marked with the letter L or coloured red.



SIMPLE MANUAL Mini Hi-Fi System

Please read this manual carefully before operating your set and retain it for future reference.

To view the instructions of advanced features, visit <http://www.lg.com> and then download Owner's Manual.

Some of the content in this manual may differ from your unit.

MODEL
CJ98

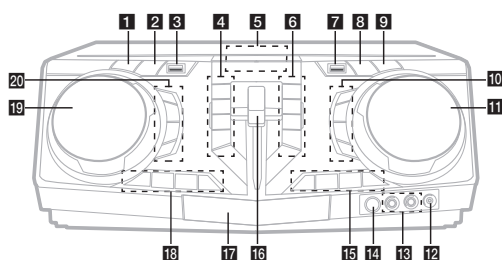


www.lg.com

Copyright © 2017 LG Electronics. All Rights Reserved



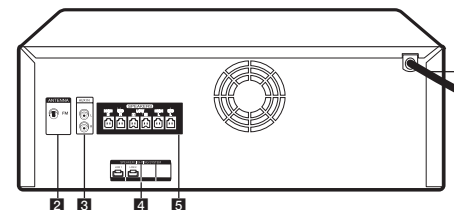
Front Panel



- 1** (Standby)
Turns the power on or off.
- 2** **USB REC / DEMO**
- Records to USB.
- In power off status, if you press **USB REC / DEMO**, show DEMO mode.
- 3** **USB 1 Port**
You can play sound files by connecting the USB device.
- 4** **PARTY THRUSTER MODE**
Selects PARTY THRUSTER mode.
 (Stop)
Stops playback or cancels DELETE function.
 (Skip/Search)
- Skips backward.
- Searches for a section within a track/file.
- Selects the radio stations.
 (Open/Close)
Opens and closes the disc tray.
- 5** Display window
- 6** **DJ LOOP**
Selects DJ LOOP mode.
(DJ LOOP mode can use during CD/USB playback.)
 (Play/Pause)
- Starts or pauses playback.
- Selects stereo/mono.
 (Skip/Search)
- Skips forward.
- Searches for a section within a track/file.
- Selects the radio stations.
- REGION EQ / BASS BLAST**
- Chooses region equalizer.
- Press and hold to select BASS effect directly.
- 7** **USB 2 Port**
You can play sound files by connecting the USB device.
- 8** **F (Function)**
Selects the function and input source.
- 9** **WIRELESS LINK**
- Selects MASTER or SLAVE on WIRELESS PARTY LINK mode.
- Enable or disable WIRELESS PARTY LINK mode.

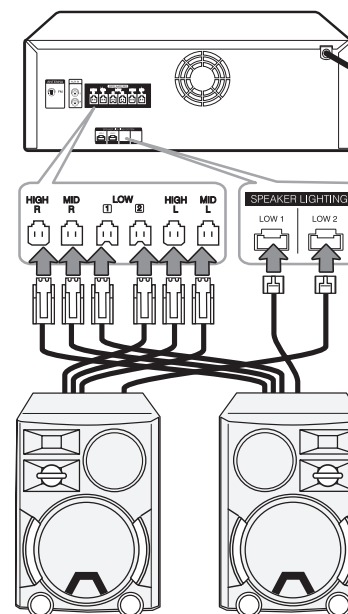
- 10** **LIGHTING**
Turns on/off the lighting effects.
- VOCAL EFFECTS**
Selects VOCAL EFFECTS mode.
- VOICE CANCELLER**
You can enjoy the function while playing the music, by reducing singer vocal of music in the various source.
- ECHO**
Selects ECHO mode.
- 11** **MASTER VOLUME / MULTI JOG**
- Adjust speaker volume.
- Selects lighting mode and vocal effects mode.
- 12** **PORT. (Portable) IN jack**
- 13** **MIC (Microphone) 1/2 jack**
- 14** (Remote sensor)
- 15** **KEY CHANGER (# / b)**
Changes the key to suit your vocal range.
MIC (Microphone) +/-
Adjust microphone volume.
- 16** **PARTY THRUSTER lever**
Slide up the lever to create a party atmosphere.
- 17** Disc tray
- 18** **CLUB, DRUM, USER (DJ PRO)**
Selects CLUB, DRUM or USER sound effect to mix.
(If you want to use USER, you have to register a source with "Music Flow Bluetooth" app.)
1, 2, 3, 4 (DJ PRO PAD)
Press a desired sound pad.
- 19** **SCRATCH / SEARCH & LEVEL CONTROL**
- Turns clockwise or counterclockwise to make scratch sound.
- Turns clockwise or counterclockwise to control the USER EQ level.
- Searches a folder or a file.
- Adjust DJ EFFECT level.
- 20** **DJ EFFECT**
Selects a desired DJ EFFECT.
USER EQ
Selects the sound effect created by your own.
SEARCH
Moves to folder or file in selection mode.
OK
Selects a folder when searching a file.

Rear Panel



- 1** Power cord
- 2** **ANTENNA (FM)**
- 3** **AUX IN (L/R)**
Connect an auxiliary device.
- 4** **SPEAKER LIGHTING SYSTEM**
Connect the speaker lighting cables.
- 5** **SPEAKERS** connector

Speaker Connection



Controller App



Download the **Music Flow Bluetooth** App to your device. (Android only)

Additional Information

Specifications

Power Requirements	Refer to the main label on the unit.
Power Consumption	Refer to the main label on the unit.
Dimensions (W x H x D)	Approx. 450 mm x 170 mm x 349 mm
Bus Power Supply (USB)	5 V 500 mA
Amplifier (Total RMS output power)	3,500 W RMS

Design and specifications are subject to change without notice.

LG Sound Sync (Wireless)



For more information, download the online owner's manual. <http://www.lg.com>