

# Stand

## OWNER'S MANUAL

Please read this manual carefully  
before operating your set and  
retain it for future reference.

ST-G4SN55  
ST-G4SN65

The model and serial number  
of the product are located on  
the back and on one side of the  
product. Record them below in  
case you ever need service.


Model \_\_\_\_\_

Serial No. \_\_\_\_\_





\*Image shown may differ from your product.

## Safety instructions

 This symbol is intended to alert the user to the presence of important operating and maintenance (servicing) instructions in the literature accompanying the appliance.

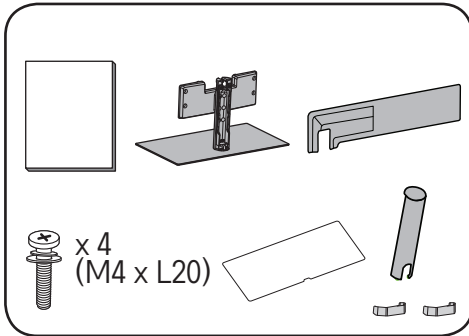
Please read these safety precautions carefully before using the product.

-  • When lifting or moving the product, at least two people are required due to the heavy weight of the product.
  - The product may fall down, causing a malfunction or injury.
- Do not let children hang on or climb onto the product.
  - The product may fall down, causing an injury or even death.
- Do not install the product in a place which is unstable or vibrating or a place where the product is not completely supported such as a shaky shelf or a tilted place.
  - The product may fall down or overturn, causing an injury or malfunction.

-  • Put the product on a flat and firm floor.
- When moving or handling a product assembled with the Stand, be cautious about damaging the exterior of the product.
- When there is a stain or fingerprint left on the surface, wipe it off gently.
  - When removing a stain, do not use excessive force. Wiping with excessive force may cause scratches or discoloration on the product.
- Only use the authorized stand and wall mounting bracket made specifically for LG products.
  - Pursuant to Consumer Protection Law, LG Electronics will not be held responsible for any product malfunction, material damage or injury caused by using products not authorized by LG Electronics.

## Assembling and Preparing

### Accessories

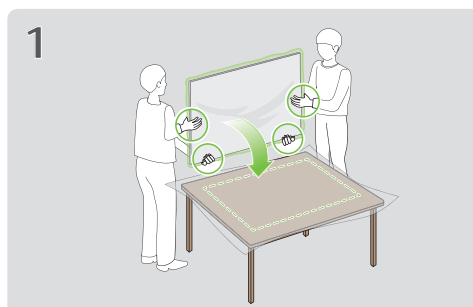


## How to Assemble the Stand

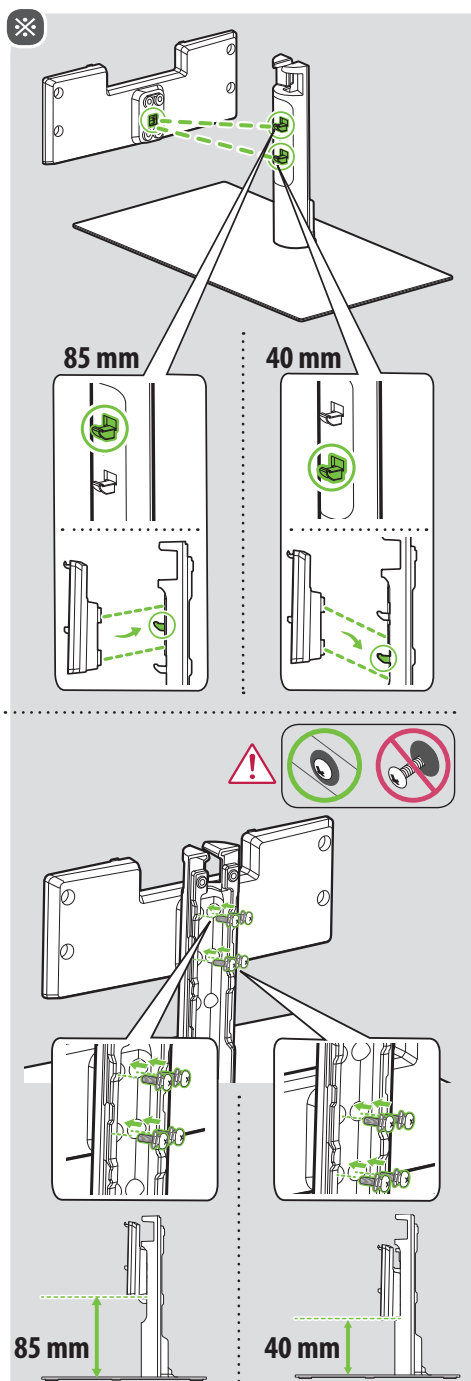
- ⚠ • When assembling the stand, put the product on a table or a flat floor with its screen facing downward. Here, first put a soft and fluffy cloth on the place, and then put the product on top of it to prevent the screen from being damaged.
- When assembling the stand, ensure that all of the provided screws are attached. If the screws are not fully tightened, the product may tilt or tip over, resulting in damage. Tightening the screws with excessive force may cause them to come off due to abrasion of the screw joint.
- When assembling the product, do not use foreign substances (oil, lubricant, etc.) on the screws.
  - It may cause damage to the product.
- Before installing a wall mount support, disassemble the Stand by conducting the method to assemble the stand in a reverse order.



**55G4\***  
**65G4\***

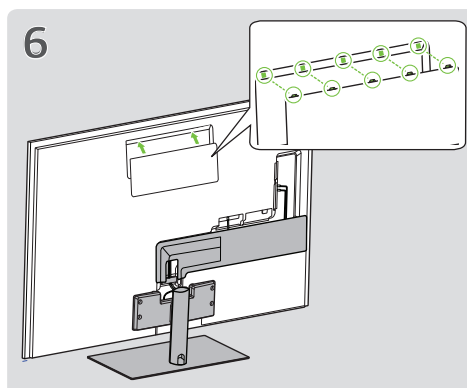
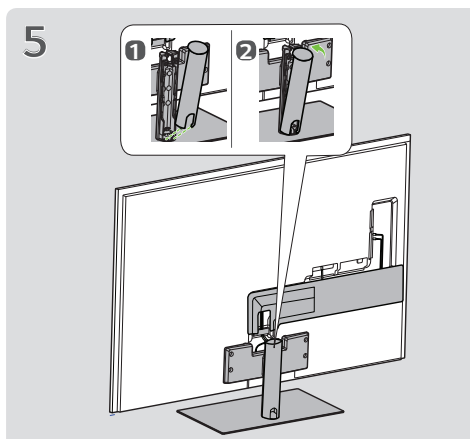
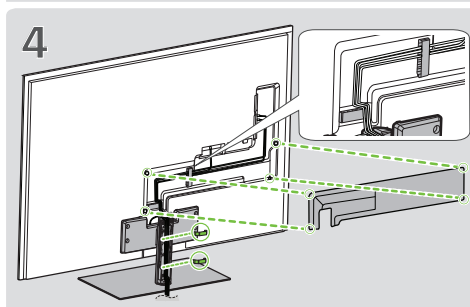
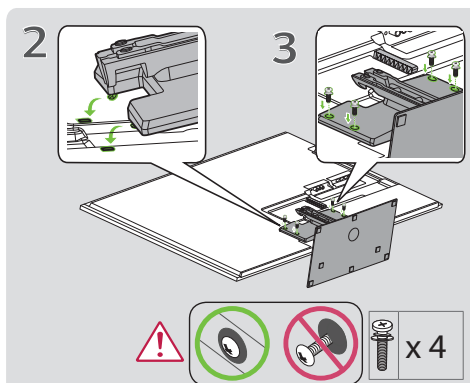


**55G4\***  
**65G4\***

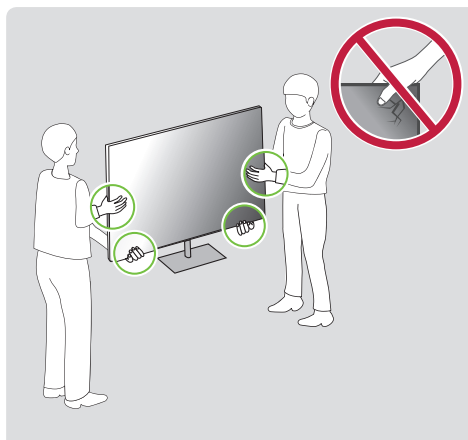




**55G4\***  
**65G4\***



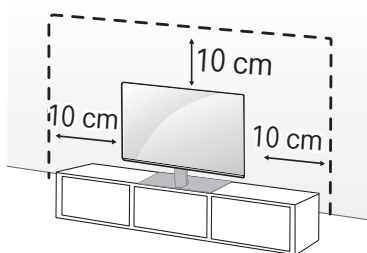
\*The figure is an example, and the user can freely arrange the lines.



## Mounting on a Table

1 Lift and tilt the TV into its upright position on a table.

- Leave a 10 cm (minimum) space from the wall for proper ventilation.

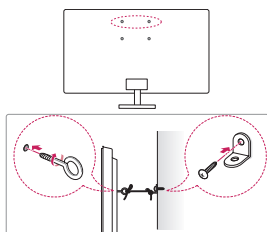


2 Connect the power cord to a wall outlet.



- If you install the TV on a stand, you need to take actions to prevent the product from overturning. Otherwise, the product may fall over, which may cause injury.
- Do not use any unapproved items to ensure the safety and product life span.
- Any damage or injuries caused by using unapproved items are not covered by the warranty.
- When installing on a cabinet or a shelf using a stand, make sure its width is greater than that of the TV.
- If the TV is placed on the stand, its screen may be tilted back slightly. If the stand is not level because an object is placed under the stand or it is not on a flat surface, the product may fall and cause injury or product damage.

## Securing the TV to a Wall



- 1 Insert and tighten the eye-bolts, or TV brackets and bolts on the back of the TV.
    - If there are bolts inserted at the eye-bolts position, remove the bolts first.
  - 2 Mount the wall brackets with the bolts to the wall.

Match the location of the wall bracket and the eye-bolts on the rear of the TV.
  - 3 Connect the eye-bolts and wall brackets tightly with a sturdy rope. Make sure to keep the rope horizontal with the flat surface.
- Use a platform or cabinet that is strong and large enough to support the TV securely.
  - Brackets, bolts and ropes are not provided. You can obtain additional accessories from your local dealer.

## Specifications

Model Name	Width x Depth x Height (mm)	Weight (kg)
ST-G4SN55 ST-G4SN65	485 x 263 x 267	4.6



# 支架

## 用户手册

使用产品前请阅读使用说明并保留备用。

ST-G4SN55

ST-G4SN65


产品的型号和序列号位于产品的背面和一侧。请将其记录在下方，以备日后维修使用。

型号


序列号


\*所示的图像可能与您的产品有所不同。

## 安全说明

 此标志用于警告用户在随设备提供的说明书中有对重要操作与维护（服务）的详细说明。

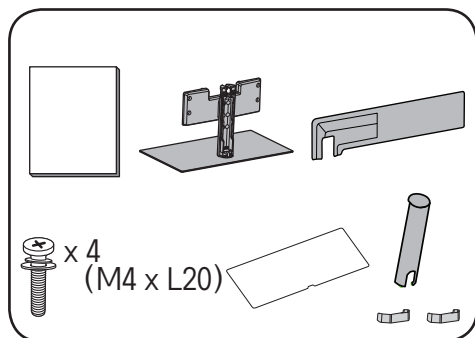
请在使用产品前仔细阅读这些安全预防措施。

-  • 由于产品较重，因此在抬起或移动时至少需要两个人。
  - 产品可能跌落，导致产品故障或人员受伤。
- 不要让儿童悬吊或攀附在产品上。
  - 产品可能跌落，导致人员受伤甚至死亡。
- 请勿将产品安装在不稳定或振动的地方，或者产品没有完全支撑的地方，例如摇晃的架子或倾斜的地方。
  - 产品可能跌落或倾倒，导致人员受伤或产品故障。

-  • 将产品放在平坦坚实的地面上。
- 移动或搬运装有支架的产品时，请注意不要损坏产品外部。
- 产品表面留有污渍或指纹时，请轻轻擦拭干净。
  - 去除污渍时，请勿过度用力。过度用力擦拭可能会导致产品刮擦或变色。
- 请只使用专为 LG 产品生产的授权支架和壁挂架。
  - 根据消费者保护法，对于因使用 LG Electronics 未授权的产品而引起的任何产品故障、材料损坏或人员受伤，LG Electronics 均概不负责。

## 组装和准备工作

### 配件

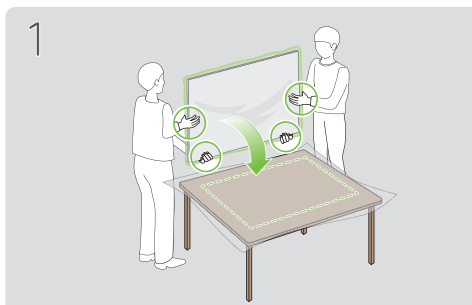


## 如何组装支架

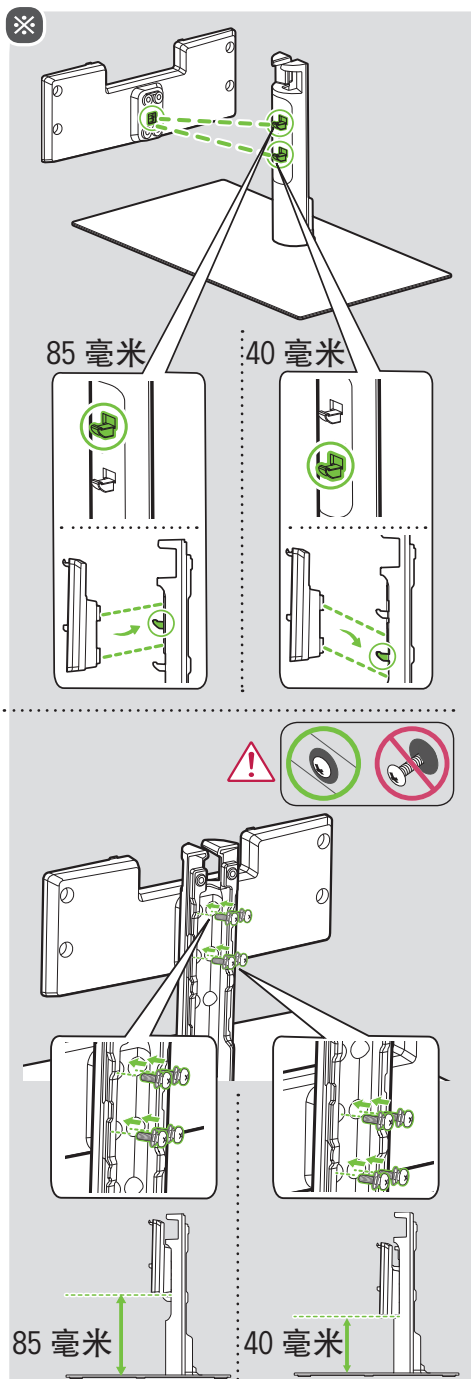
- ⚠ • 组装支架时，将产品放在桌子或平坦地面上，屏幕朝下。此时，首先将一块柔软蓬松的布铺在上面，然后将产品放在布上面，防止屏幕损坏。
- 组装支架时，确保拧紧提供的所有螺钉。如果螺钉没有完全拧紧，产品可能会倾斜或翻倒，从而导致损坏。过度用力拧紧螺钉可能会因螺钉接头磨损而导致螺钉脱落。
- 组装产品时，请勿在螺钉上使用异物（油，润滑剂等）。
  - 否则可能会导致产品损坏。
- 在安装壁挂支架之前，请按组装支架的相反顺序来拆卸支架。



55G4\*  
65G4\*

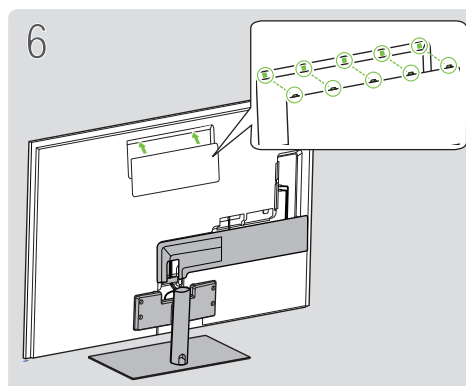
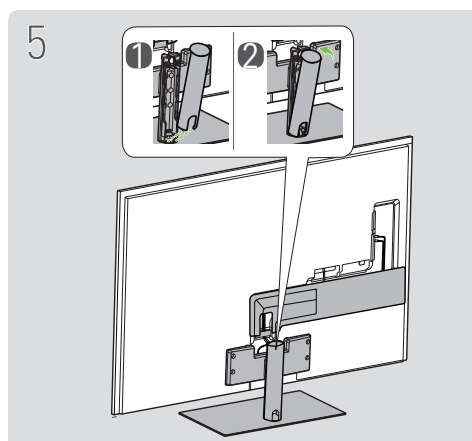
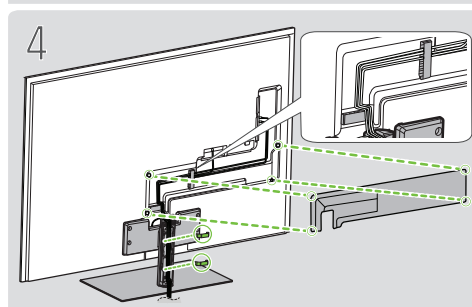
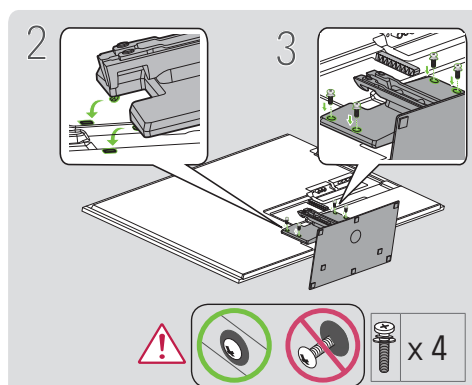


55G4\*  
65G4\*

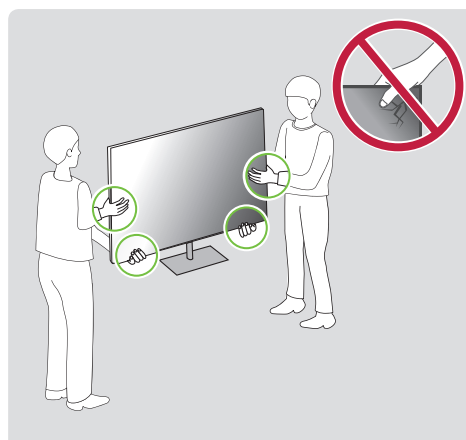




55G4\*  
65G4\*

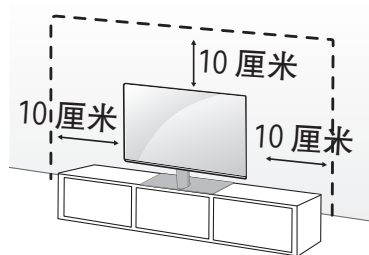


\*该图只是一个示例，用户可以自由布线。



## 安装到桌面

- 1 抬起电视并将其保持与桌面垂直的位置。
  - 与墙壁之间留出 10 厘米的最小距离以便得到适当通风。

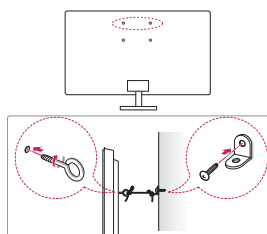


- 2 将电源线连接至墙上插座。



- 如果您将电视机安装在架子上，请采取必要措施防止产品倾覆。否则，产品可能掉落，从而造成人身伤害。
- 请勿使用任何未经批准的附件，以确保安全和产品使用寿命。
- 任何因使用未经批准附件造成的损坏或伤害均不在保修范围内。
- 当使用支架安装在橱柜或架子上时，请确保其宽度大于电视的宽度。
- 如果将电视放置在支架上，则屏幕可能会略微向后倾斜。如果因为支架下方有物体或所放置表面不平整而导致支架未处于水平位置，产品可能会掉落，从而造成人身伤害或产品损坏。

## 将电视固定到墙壁上



- 1 在电视背面插入并拧紧环首螺栓或电视支架和螺栓。
  - 如果在环首螺栓位置中插入了螺栓，请先将这些螺栓取出。
- 2 用螺栓将壁挂支架安装到墙壁上。
  - 使壁挂支架位置与电视后面的环首螺栓的位置匹配。
- 3 用结实的绳索将环首螺栓和壁挂支架连接起来。确保绳索位于平面的水平方向。
  - 使用足以稳固支撑电视的够牢固，够大的平台或柜子。
  - 支架，螺栓和绳索均为可选配件。您可以从当地经销商处选购此配件。

## 规格

型号名称	宽度 x 深度 x 高度 (毫米)	重量 (千克)
ST-G4SN55 ST-G4SN65	485 x 263 x 267	4.6

