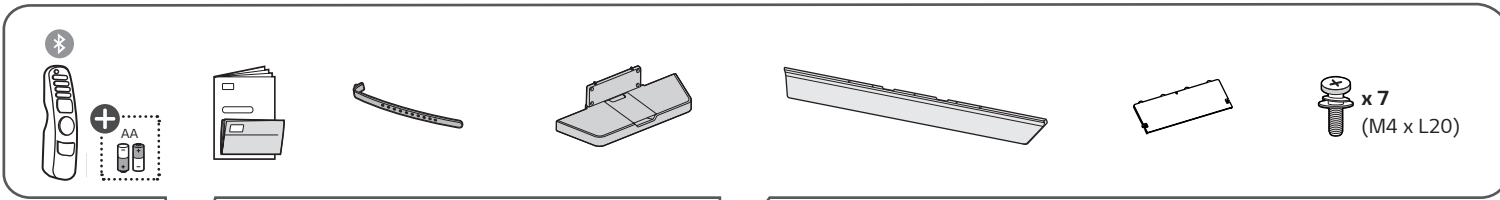
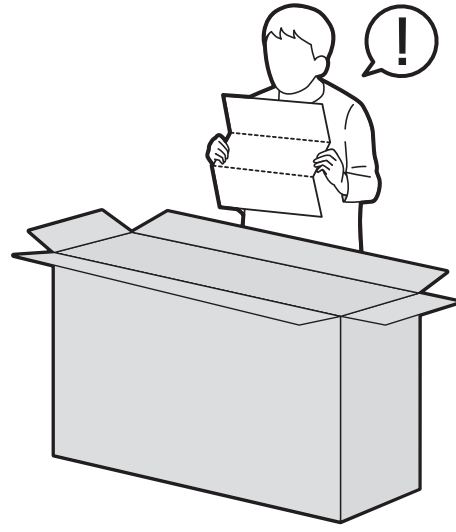
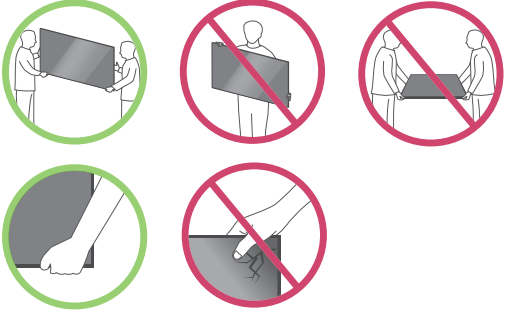
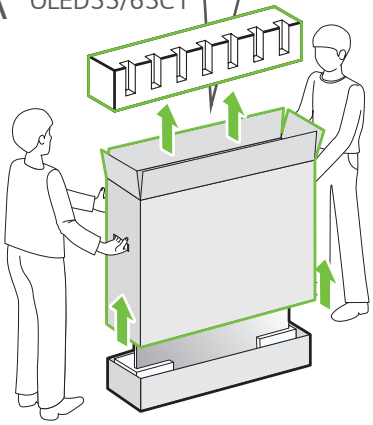


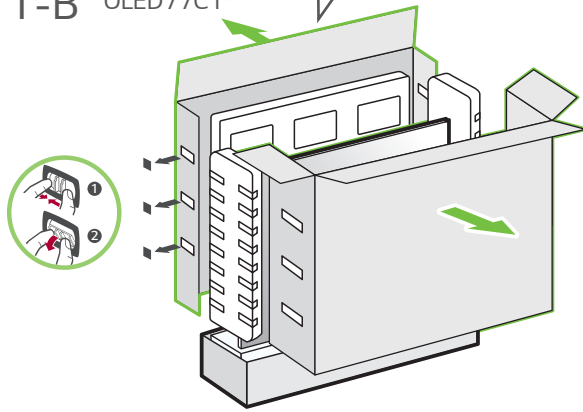
OLED55C1PSA OLED65C1PSA OLED77C1PSA



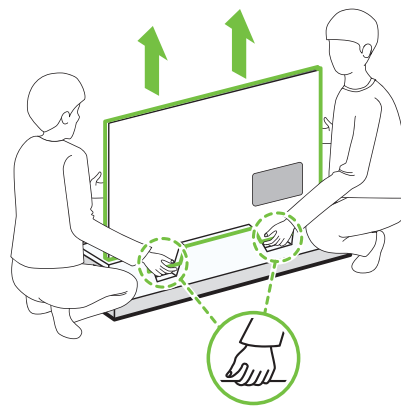
1-A OLED55/65C1*



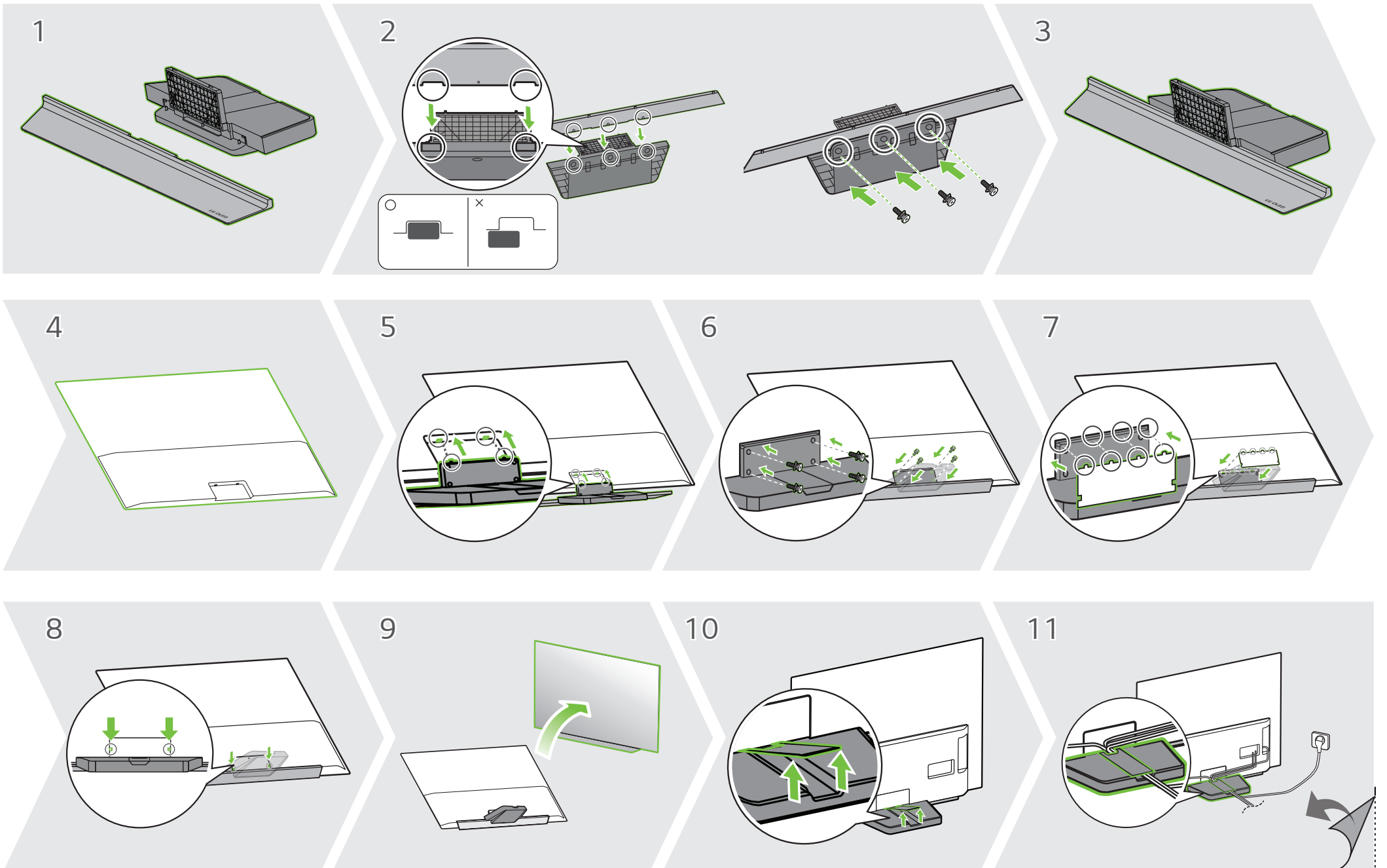
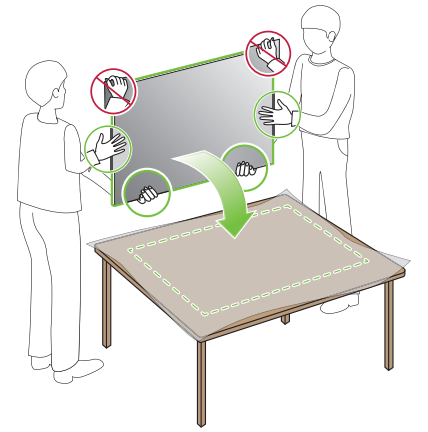
1-B OLED77C1*



2



3





OPTICAL DIGITAL AUDIO OUT



LAN



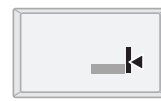
ANTENNA / CABLE IN



HDMI IN



USB IN



HDMI IN



HDMI IN eARC/ARC



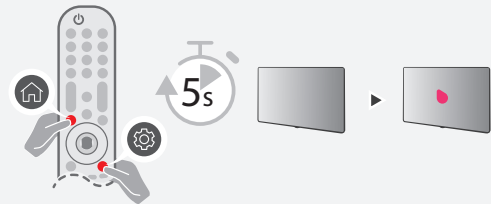
USB IN



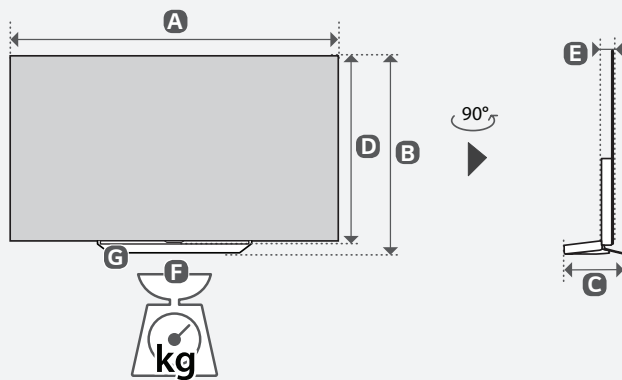
OLED55/65C1*



OLED77C1*



A, B, C, D, E : mm
F, G : kg



MODELS MODELOS	A		B		C		D		E		F		F - G		Power consumption Consumo de potencia
OLED55C1PSA	1228	1 228	738	738	251	251	706	706	46.9	46,9	23.0	23,0	18.9	18,9	347 W
OLED65C1PSA	1449	1 449	862	862	251	251	830	830	46.9	46,9	32.6	32,6	24.0	24,0	467 W
OLED77C1PSA	1723	1 723	1023	1 023	269	269	993	993	55.3	55,3	35.9	35,9	26.7	26,7	645 W
Power requirement / Alimentación requerida									AC 100-240 V - 50/60 Hz						



ENGLISH Read **Safety and Reference**.
Due to environmental government regulations about imports and battery destruction in Colombia, TVs will not include the batteries for the remote control.

ESPAÑOL Leer **Seguridad y Consultas**.
Por regulaciones de tipo ambiental respecto a la importación y destrucción de baterías en Colombia; los televisores no van a traer incluidas las pilas del control remoto.

ENGLISH
Easy Setup Guide
Please read this manual carefully before operating your set and retain it for future reference.

ESPAÑOL
Guía Rápida de Configuración
Lea atentamente este manual antes de poner en marcha el equipo y consérvelo para futuras consultas.

⊕ : Depending upon model / Según el modelo