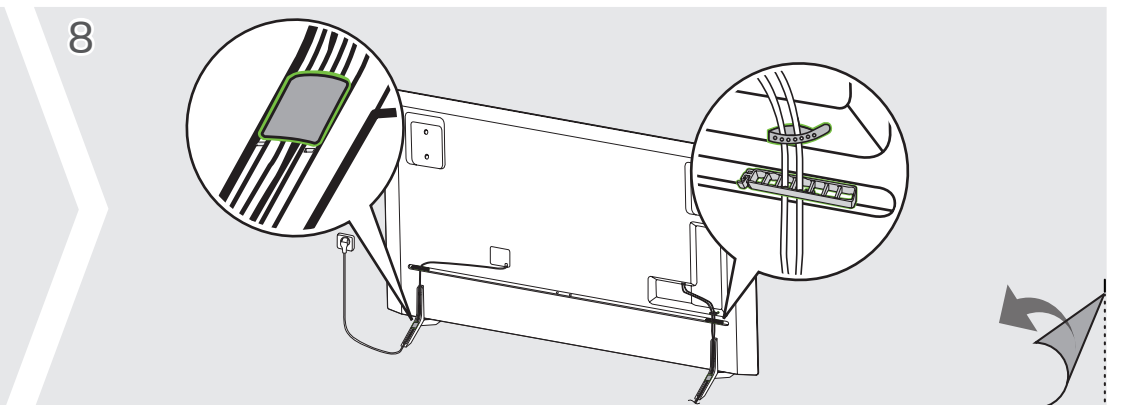
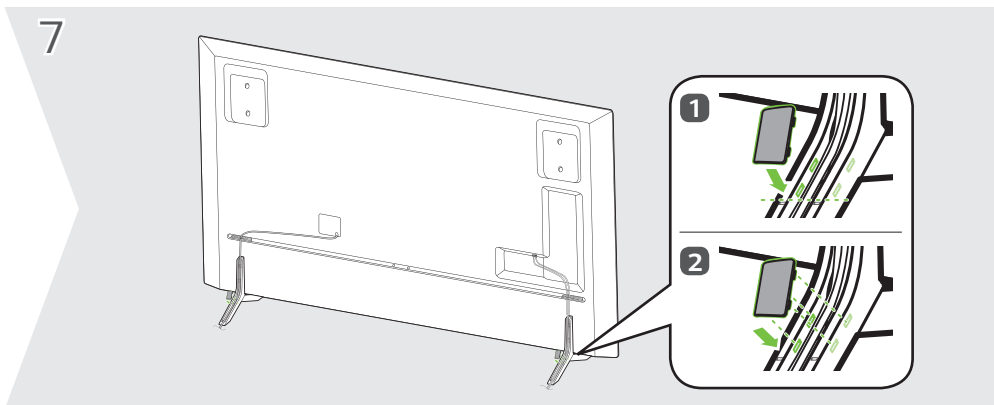
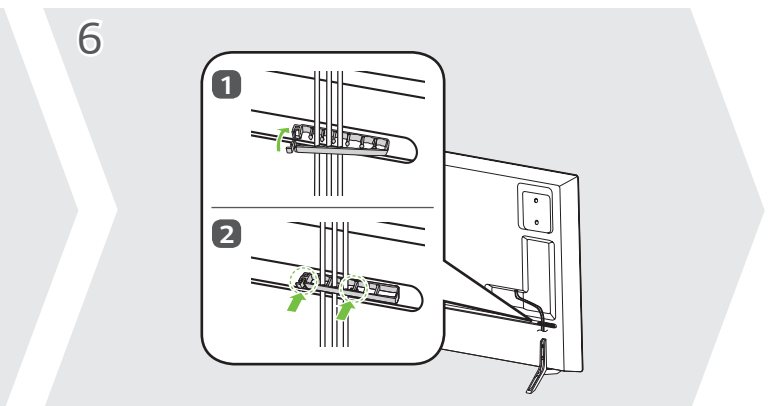
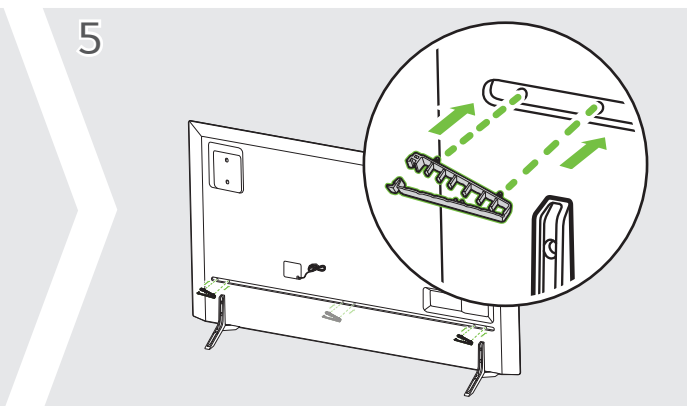
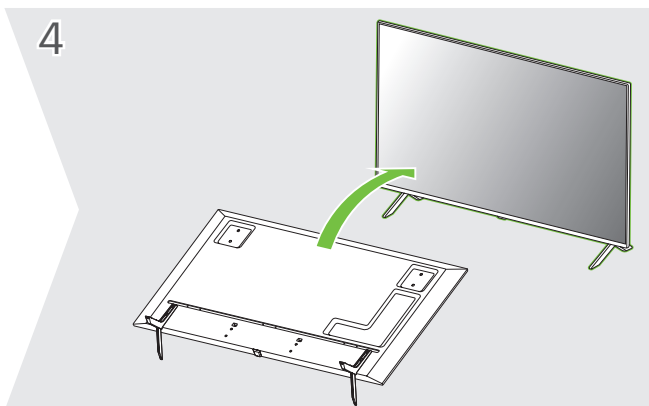
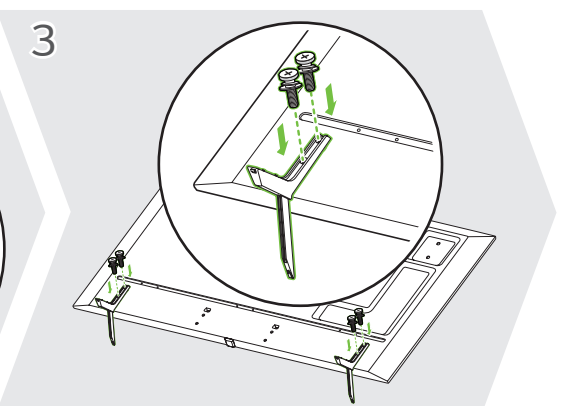
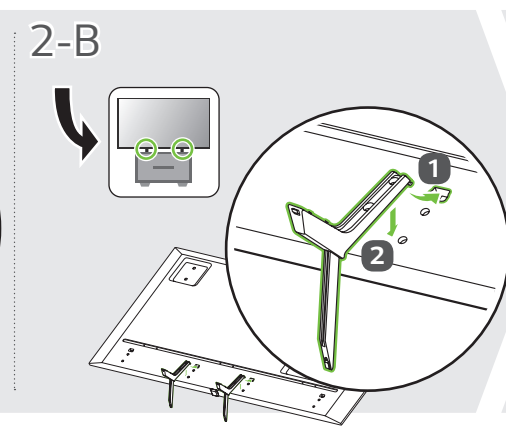
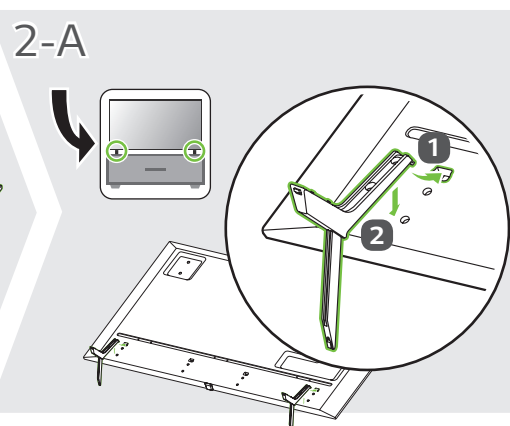
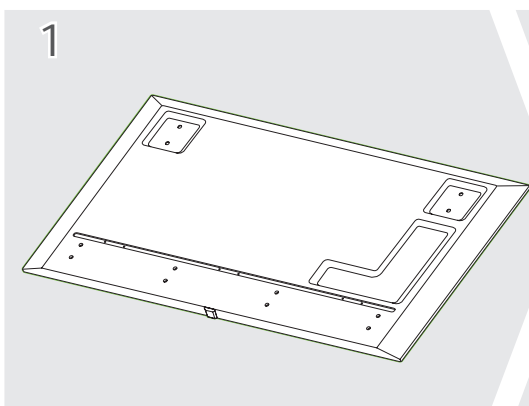
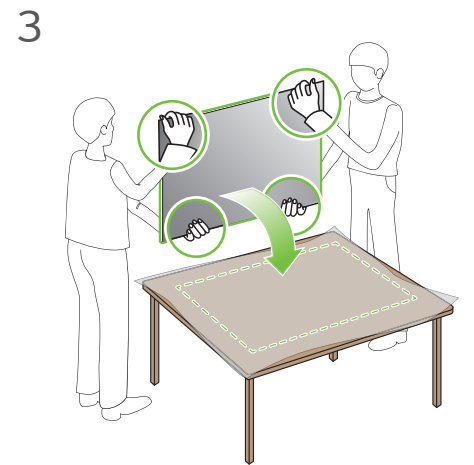
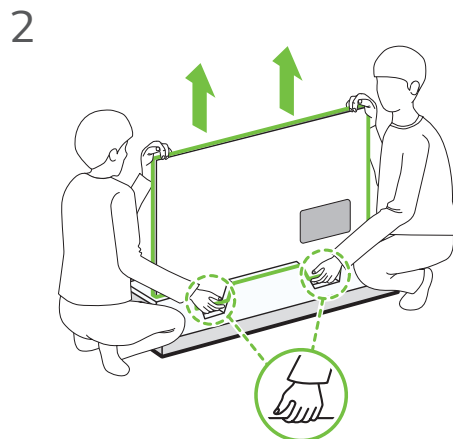
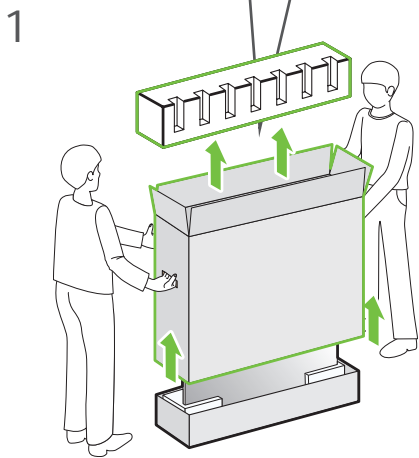
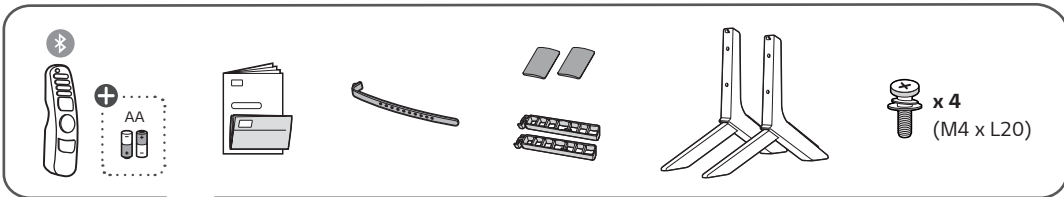
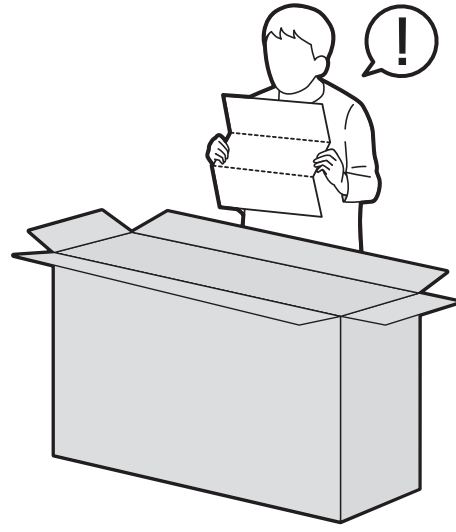
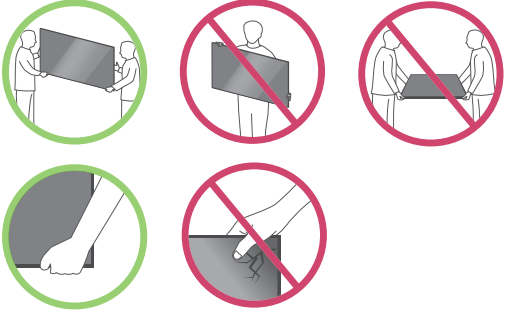


75NANO80SPA





OPTICAL DIGITAL AUDIO OUT



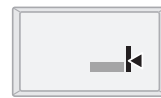
LAN



ANTENNA / CABLE IN



USB IN



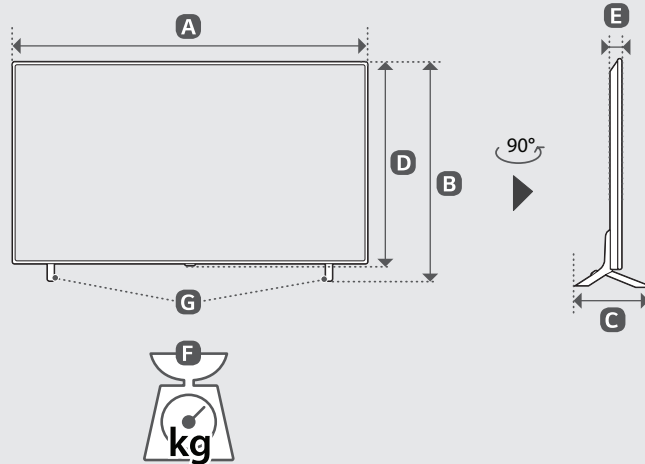
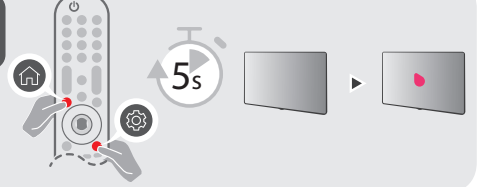
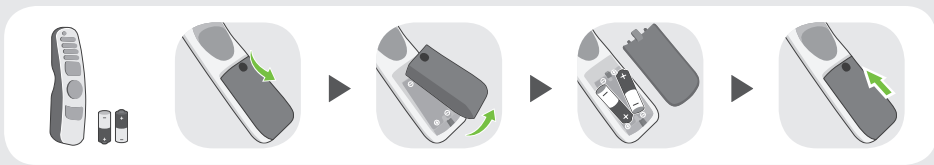
HDMI IN



HDMI IN eARC/ARC



USB IN



MODELS	A		B		C		D		E		F		F - G		Power consumption
MODELOS	mm														kg
75NANO80SPA	1,675	1 675	1,029	1 029	359	359	964	964	44,5	44,5	36,9	36,9	35,9	35,9	270 W
Power requirement / Alimentación requerida										AC 100 - 240 V - 50 / 60 Hz					



ENGLISH Read **Safety and Reference**.
Due to environmental government regulations about imports and battery destruction in Colombia, TVs will not include the batteries for the remote control.

ESPAÑOL Leer **Seguridad y Consultas**.
Por regulaciones de tipo ambiental respecto a la importación y destrucción de baterías en Colombia; los televisores no van a traer incluidas las pilas del control remoto.

ENGLISH
Easy Setup Guide
Please read this manual carefully before operating your set and retain it for future reference.

ESPAÑOL
Guía Rápida de Configuración
Lea atentamente este manual antes de poner en marcha el equipo y consérvelo para futuras consultas.

⊕ : Depending upon model / Según el modelo