



SIMPLE MANUAL

Wireless Sound Bar

ENGLISH

Please read this manual carefully before operating your set and retain it for future reference.

To view the instructions of advanced features, visit
<http://www.lg.com> and then download Owner's Manual.
Some of the content in this manual may differ from your unit.

MODEL

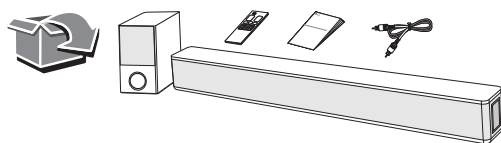
SNH5



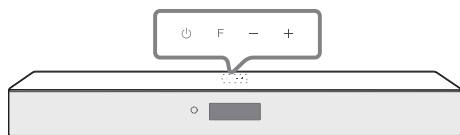
MFL71670181
2102_Rev02

www.lg.com

Copyright © 2020-2022 LG Electronics Inc. All Rights Reserved.

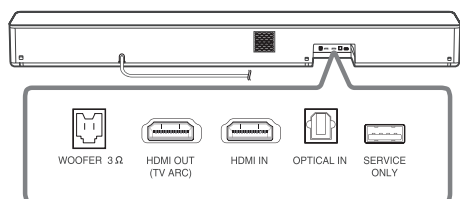


Front Panel



- ⏻ (Standby) Switches the unit ON or OFF.
 F (Function) Selects function.
 -/+ (Volume) Adjusts volume.

Rear Panel



- WOOFER 3 Ω** Connect to a Subwoofer.
HDMI OUT (TV ARC) Connect to a TV.
HDMI IN Connect to device with HDMI OUT.
OPTICAL IN Connect to an optical device.
USB (Service only) S/W download connector.

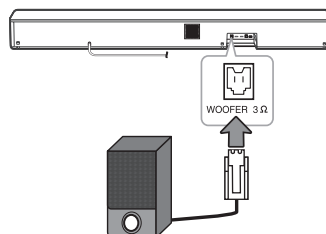


Make sure to properly align and connect the optical cable; improper alignment may cause damage to the jack.

Subwoofer Connection

Place the subwoofer near the sound bar and follow steps below.

- 1 Connect a subwoofer cord to the sound bar.
 - When connecting a Subwoofer cord to the unit, insert the connector until it clicks.
- 2 Turn on the sound bar.

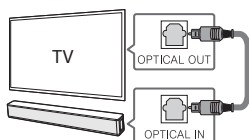


TV Connection

Connect the sound bar and TV using Optical (A) or HDMI ARC (B).

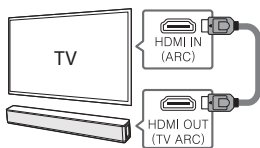
A Optical Connection

- 1 Connect the sound bar to the TV using Optical cable.
- 2 Set up [External Speaker (Optical)] on your TV setting menu.



B HDMI (ARC) Connection

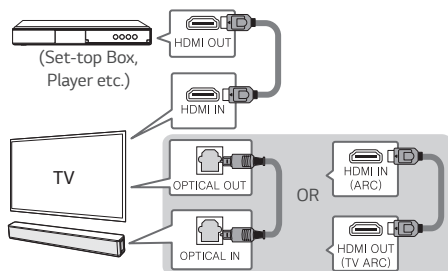
- 1 Connect the sound bar to the TV using HDMI cable.
- 2 Set up [External Speaker (HDMI ARC)] on your TV setting menu.



- HDMI connection is unavailable if your TV does not support HDMI ARC.
- If this unit is connected by OPTICAL and ARC at the same time, the ARC signal has a higher priority.

Additional Device Connection

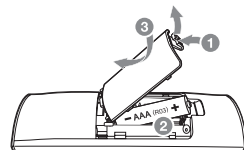
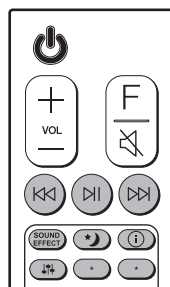
- 1 Connect to the external device like as follow.



- 2 Set the input source by pressing F repeatedly.

Remote control

Replacement of Battery



⏮/⏭: Skip

⏸: Play/Pause

- **Bluetooth connection lock (BT LOCK):** Select the **Bluetooth** function by pressing F repeatedly. Long press ⏸ and press it again to limit Bluetooth connection to only BT and LG TV.

SOUND EFFECT: Selects a sound effect mode.

- **TV remote:** Long press **SOUND EFFECT** and press it again to use TV remote control.

⌂: Turns on or off the Night time mode.

ⓘ: Displays the information of a file, an input source or connected **Bluetooth** device name.

- **Auto Power ON/OFF:** Long press ⓘ and press it again.

⬆/⬆: Adjusts the sound level of the adjustable speakers.

*: This button is not available.

Additional Information

Specification

Power Requirements	Refer to the main label.
Power consumption	Refer to the main label.
	Networked standby : 1.5 W (If all network ports are activated.)
Dimensions (W x H x D)	Approx. 990.0 mm X 97.0 mm X 125.0 mm With foot
Amplifier (Total RMS Output power)	600 W RMS

Design and specifications are subject to change without notice.

How to disconnect the wireless network connection or the wireless device

Set up the AUTO POWER ON/OFF function to off and turn off the unit.

OPEN SOURCE SOFTWARE NOTICE INFORMATION

To obtain the source code under GPL, LGPL, MPL, and other open source licenses, that is contained in this product, please visit <http://opensource.lge.com>.

In addition to the source code, all referred license terms, warranty disclaimers and copyright notices are available for download.

LG Electronics will also provide open source code to you on CD-ROM for a charge covering the cost of performing such distribution (such as the cost of media, shipping, and handling) upon email request to opensource@lge.com.

This offer is valid for a period of three years after our last shipment of this product. This offer is valid to anyone in receipt of this information.

Declaration of Conformity



Hereby, LG Electronics declares that the radio equipment type Wireless Sound Bar is in compliance with Directive 2014/53/EU. The full text of the EU declaration of conformity is available at the following internet address:

<http://www.lg.com/global/support/cedoc/cedoc#>

For consideration of the user, this device should be installed and operated with a minimum distance of 20 cm between the device and the body.











Российская Федерация

Импортер ООО "ЛГ Электроникс Рус"

Адрес импортера: 143160, Российская Федерация, Московская область, Рузский городской округ, территория
Минское шоссе, километр 86-й, дом 9

Адрес производителя : ЛГ Электроникс (Хужоу) Инк., завод Хатаи
516006, Китай, пров. Гуандонг, г. Хужоу, Промышленная зона
Жонгкай, Индустриальный парк Хутай, ХуФенг Донг Уи Роуд, 13.

Сделано в Китае

Україна

Вироблено в: ЛГ Електронікс (Хужоу) Інк., завод Хатай
516006, Китай, пров. Гуандонг, м. Хужоу, Промислова зона Жонгкай,
Індустріальний парк Хутай, ХуФенг Донг Уі Роуд, 13.

Қазақстан Республикасы

Импорттаушы АҚ "ЭЛ Джи Электроникс Алматы Қазақстан", 050061, Алматы қ., Көкорай көшесі, 2А/9

Өндірушінің мекенжайы: LG Electronics(Huizhou) Inc. Huitai Factory
516006, Қытай, Гуандонг ауданы, Хужоу қаласы, Жонгкай өнеркәсіптік аймағы,
Хутай Индустриялық саябағы, ХуФенг Донг Уи Роуд, 13.

Қазақстан Республикасы территориясында тұтынушылардан келіп түскен талаптар мен ұсыныстарды
қарайтын және тауарды жөндеу мен техникалық қызмет көрсететін ұжым:

АҚ «Эл Джи Электроникс Алматы Қазақстан», 050061, Қазақстан Республикасы, Алматы қ., Көкорай көшесі,
2А/9. Басқа сервис орталықтары жайында мағлұматты "Тұтынушыға қызмет көрсету орталығына" телефон
шалу арқылы білуге болады.

Қытайда жасалған