

Additional Information

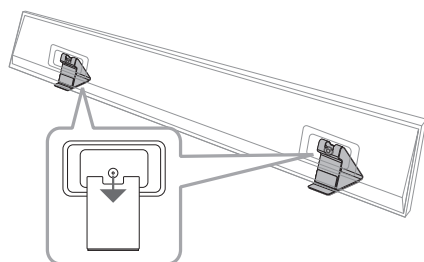
Specification

Power consumption	Refer to the main label.
AC adapter	<ul style="list-style-type: none"> Model : DA-50F25 Manufacturer : Asian Power Devices Inc. Input : 100 - 240 V ~ 50 - 60 Hz 1.5 A Max. Output : 25 V $\overline{\text{---}}$ 2 A
Dimensions (W x H x D)	Approx. 1446.0 mm x 150.0 mm x 32.5 mm
Bus Power Supply (USB)	5 V $\overline{\text{---}}$ 500 mA
Amplifier (Total RMS Output power)	420 W RMS

Design and specifications are subject to change without notice.

Installing the stand

Fix the hooks of the unit on the stands as shown below.



When installing the sound bar with a stand, install it so that it does not cover the TV's remote sensor or screen.

To enjoy content containing Dolby Atmos® and DTS:X®, the connected device and content must support Dolby Atmos® and DTS:X®.

OPEN SOURCE SOFTWARE NOTICE INFORMATION

To obtain the source code under GPL, LGPL, MPL, and other open source licenses, that is contained in this product, please visit <http://opensource.lge.com>. In addition to the source code, all referred license terms, warranty disclaimers and copyright notices are available for download.

LG Electronics will also provide open source code to you on CD-ROM for a charge covering the cost of performing such distribution (such as the cost of media, shipping, and handling) upon email request to opensource@lge.com.

This offer is valid for a period of three years after our last shipment of this product. This offer is valid to anyone in receipt of this information.

POWER: This unit operates on a mains supply of 100 - 240 V ~ 50 - 60 Hz.

Wiring: This unit is supplied with a BS 1363 approved main plug. When replacing the fuse, always use a fuse of the same rating and approved to BS 1362. Never use this plug with the fuse cover omitted. To obtain a replacement fuse cover contact your dealer. If the type of plug supplied is not suitable for the mains sockets in your home, then the plug should be removed and a suitable type fitted. Please refer to the wiring instructions below.

Warning: A mains plug removed from the mains lead of this unit must be destroyed. A mains plug with bared wires is hazardous if inserted in a mains socket. Do not connect either wire to the earth pin, marked with the letter E or with the earth symbol \perp or coloured green or green and yellow. If any other plug is fitted, use same rating of fuse in the plug.

Important: The wires in this mains lead are coloured in accordance with the following codes:

- **BLUE: NEUTRAL, BROWN: LIVE** - As the colours of the wires in the mains lead of this unit may not correspond with the coloured marking identifying the terminals in your plug, proceed as follows: The wire which is coloured blue must be connected to the terminal which is marked with the letter N or coloured black. The wire which is coloured brown must be connected to the terminal which is marked with the letter L or coloured red.



SIMPLE MANUAL

Wireless Sound Bar

Please read this manual carefully before operating your set and retain it for future reference.

To view the instructions of advanced features, visit <http://www.lg.com> and then download Owner's Manual. Some of the content in this manual may differ from your unit.

MODEL

GX

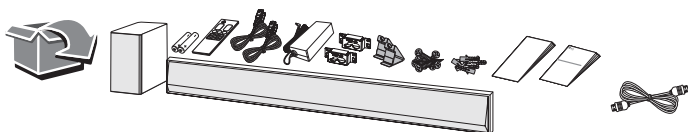


MFL71771617
2012_Rev03

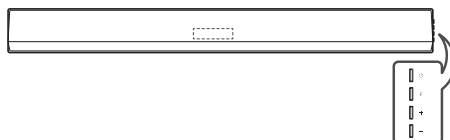


www.lg.com

Copyright © 2020 LG Electronics Inc. All Rights Reserved.

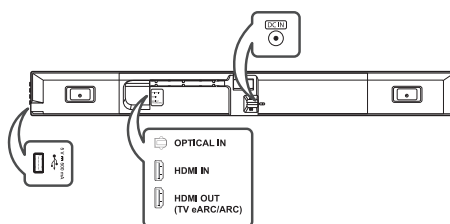


Front Panel



⏻ (Standby) Switches the unit ON or OFF.
 F (Function) Selects function.
 +/− (Volume) Adjusts volume.

Rear Panel



DC IN Connect to the AC adapter.
 USB Port Connect to a USB device.
 OPTICAL IN Connect to an optical device.
 HDMI IN Connect to device with HDMI OUT.
 HDMI OUT (TV eARC/ARC) Connect to a TV.

! Make sure to properly align and connect the optical cable; improper alignment may cause damage to the jack.

! **Rear Speakers Ready**
 Ready for surround sound with Rear Speakers Kit sold separately. (SPK8-S)

Subwoofer Connection

Place the wireless subwoofer near the sound bar and follow steps below.

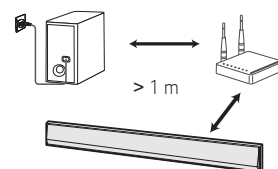
- 1 Connect the power cord of the sound bar and the wireless subwoofer to the outlet.
- 2 Turn on the sound bar.
 - The sound bar and wireless subwoofer will be **automatically** connected. The subwoofer's green LED turns on.

Manual Subwoofer Connection

If the subwoofer does not make sound, try to connect manually.

- 1 Press **PAIRING** on the rear of the wireless subwoofer.
 - The green LED on the rear of the wireless subwoofer blinks quickly. (If the green LED does not blink, press and hold the **PAIRING**.)
- 2 Turn on the sound bar.
 - Pairing is completed. The green LED on the rear of the wireless subwoofer turns on.

! Keep the sound bar and the subwoofer away from the device (ex. wireless router, microwave oven, etc.) over 1 m to prevent wireless interference.

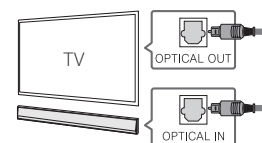


TV Connection

Connect the sound bar and TV using Optical (A) or HDMI ARC (B).

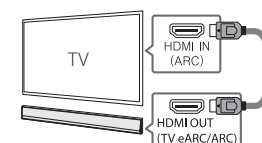
A Optical Connection

- 1 Connect the sound bar to the TV using Optical cable.
- 2 Set up [External Speaker (Optical)] on your TV setting menu.



B HDMI (ARC) Connection

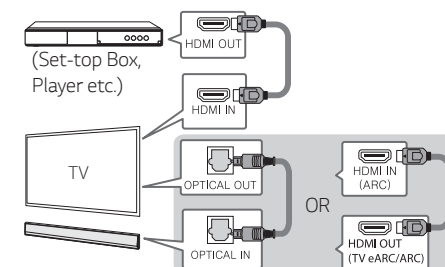
- 1 Connect the sound bar to the TV using HDMI cable.
- 2 Set up [External Speaker (HDMI ARC)] on your TV setting menu.



- ! HDMI connection is unavailable if your TV does not support HDMI ARC.
- If this unit is connected by OPTICAL and ARC at the same time, the ARC signal has a higher priority.

Additional Device Connection

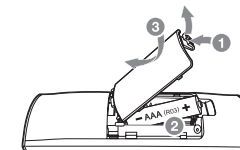
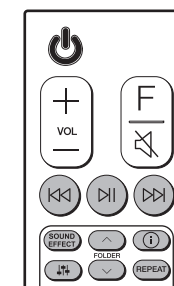
- 1 Connect to the external device like as follow.



- 2 Set the input source by pressing **F** repeatedly.

Remote control

Replacement of Battery



⏮/⏭: Skip/Search

⏮: Play/Pause

- **Bluetooth connection lock (BT LOCK):** Select the **Bluetooth** function by pressing **F** repeatedly. Long press **⏮** and press it again to limit Bluetooth connection to only BT and LG TV.

SOUND EFFECT: Selects a sound effect mode.

- **TV remote:** Long press **SOUND EFFECT** and press it again to use TV remote control.

FOLDER ^/∨: Searches a folder.

ⓘ: Displays the information of a file, an input source or connected **Bluetooth** device name.

- **Auto Power ON/OFF:** Long press ⓘ and press it again.

⏮/⏭: Adjusts sound level of each speaker.

- **Surround sound:** Long press ⏮/⏭ and press it again.

REPEAT: Listens to your files repeatedly or randomly.

! This product provides screws and wall plugs to fix the wall bracket to the wall. Please check the installation method through Owner's manual on the website (www.lg.com).