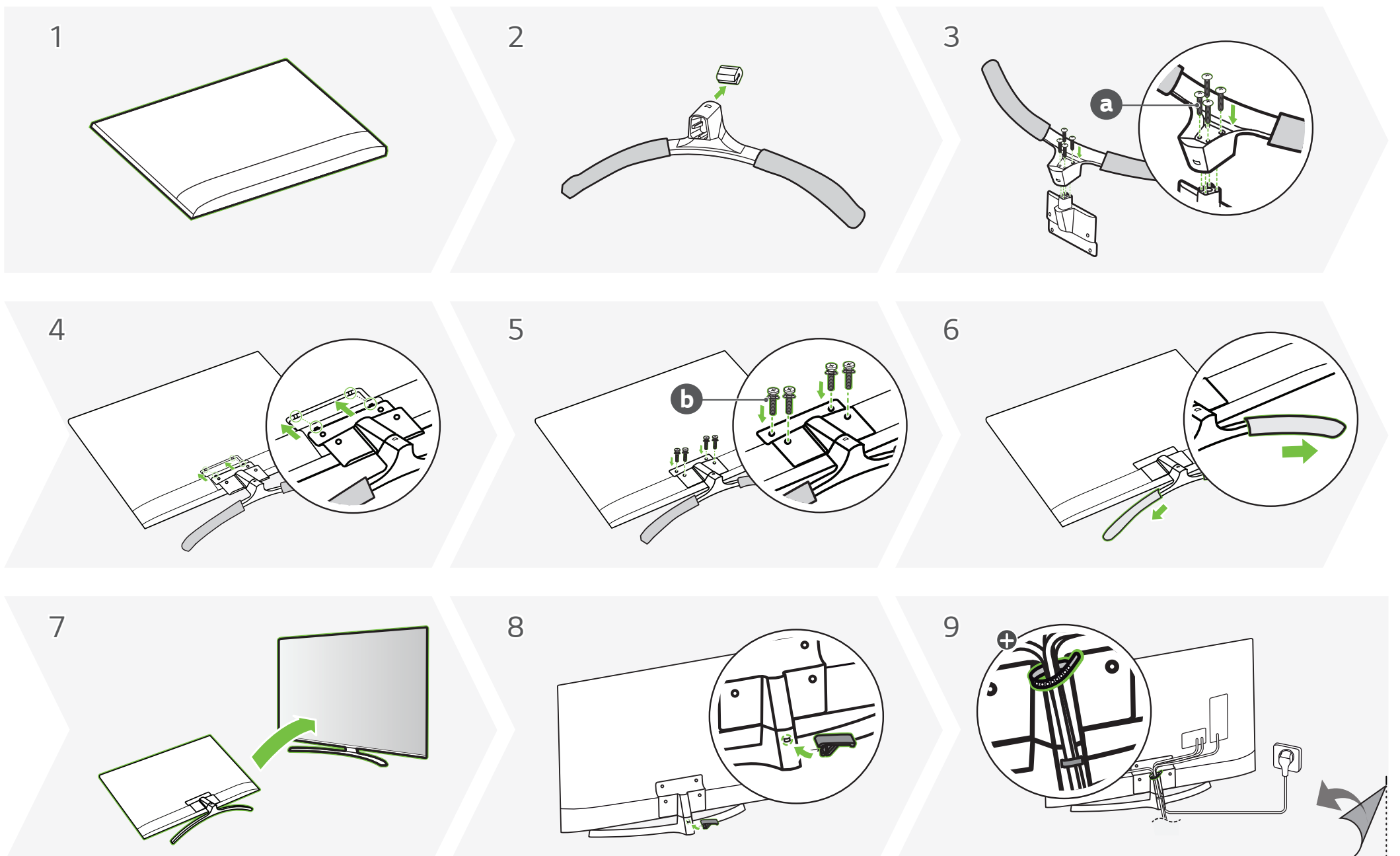
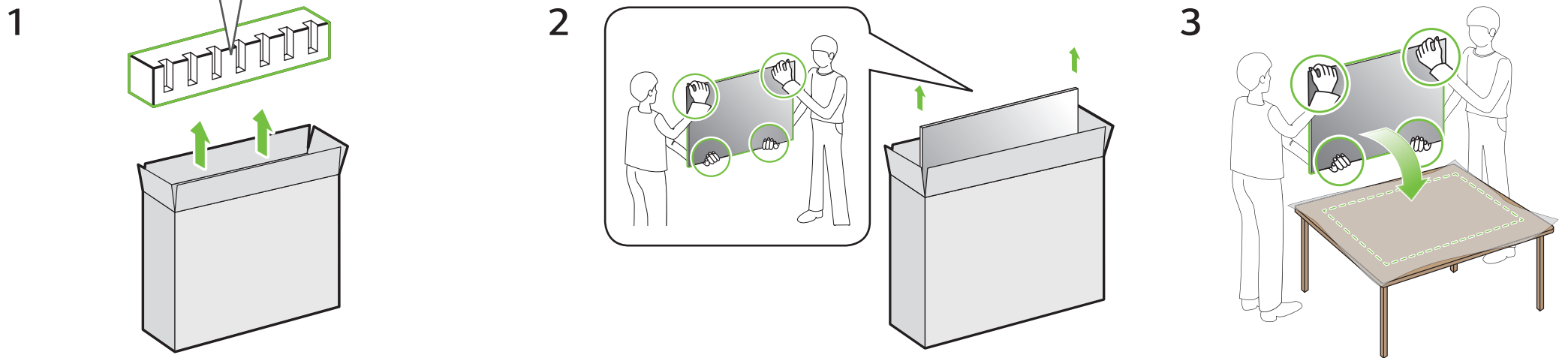
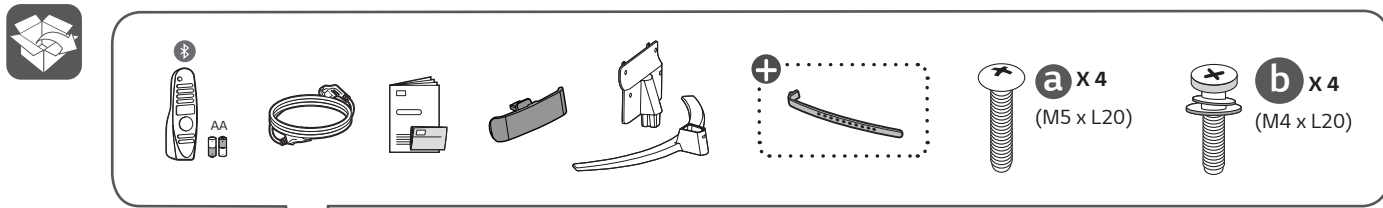
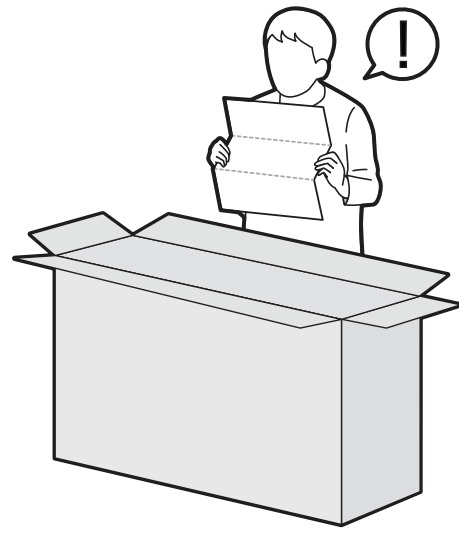
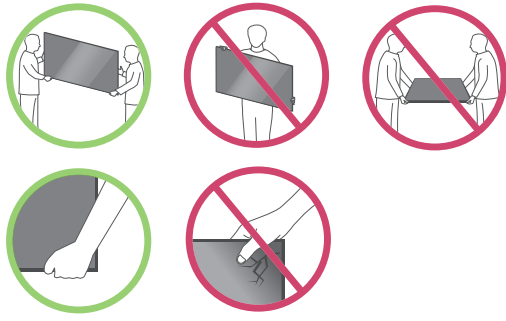
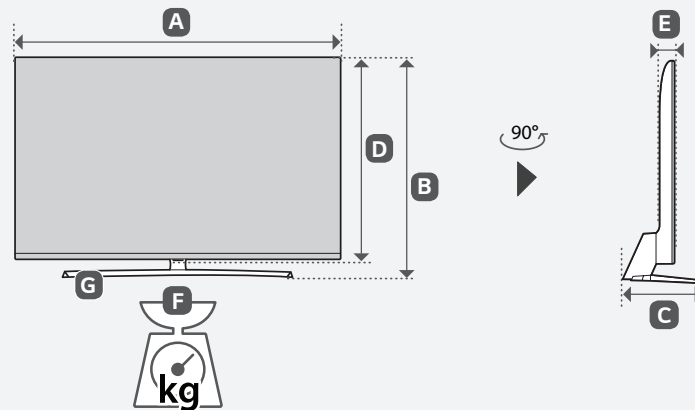
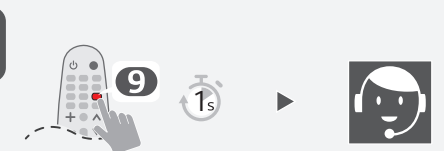
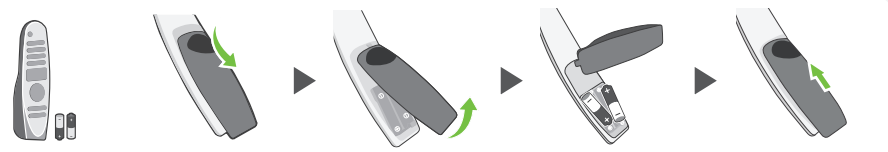
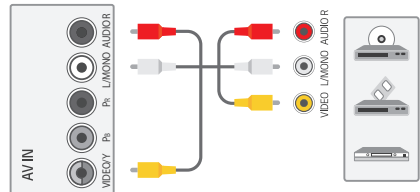
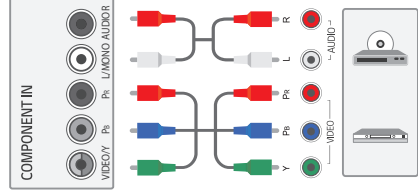


UN81*





	A	B	C	D	E	F	F-G	
	(mm)				(kg)			
43UN81006LB	975	628	249	571	86.4	10.2	9.1	
43UN81003LB								
50UN81006LB	1128	714	249	658	86.4	13.3	12.2	
50UN81003LB								
Power requirement	AC 100-240 V - 50 / 60 Hz							



- English** • Read **Safety and Reference**.
- Русский** • Прочтите **Руководство по технике безопасности**.
- Українська** • Прочитайте **"Правила безпеки та довідкова інформація"**.
- Қазақша** • **Қауіпсіздік нұсқаулығын** оқыңыз.
- O'zbekcha** • **Xavfsizlik bo'yicha ko'rsatmalar va havolalar**'ni o'qib chiqing.
- Монгол** • **Аюулгүй ажиллагааны зааварчилгааг** уншина уу.

⊕ : Depending on model / В зависимости от модели / Залежно від моделі / Үлгіге байланысты / Rusumiga qarab / Загвараас хамаарна