

## SIMPLE MANUAL

# Sound Bar

Please read this manual carefully before operating your set and retain it for future reference.

To view the instructions of advanced features, visit <http://www.lg.com> and then download Owner's Manual. Some of the content in this manual may differ from your unit.

MODEL  
SJ1

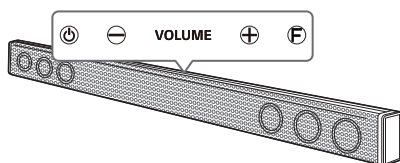


[www.lg.com](http://www.lg.com)

Copyright © 2017 LG Electronics. All Rights Reserved

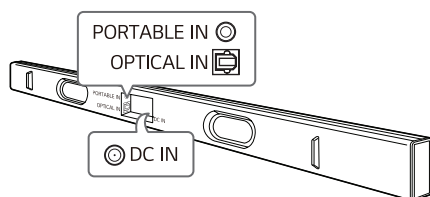


## Front Panel



- ..... Standby/Standby LED
- ..... Adjusts Volume
- ..... Selects Function

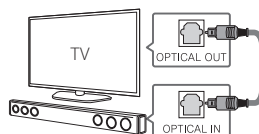
## Rear Panel



- PORTABLE IN ..... Connect to a Portable device
- OPTICAL IN ..... Connect to an Optical device
- DC IN ..... Connect to the AC adapter

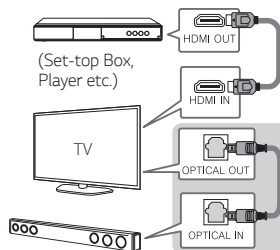
## TV Connection

- 1 Connect the sound bar to the TV using Optical cable.
- 2 Set up [External Speaker (Optical)] on your TV setting menu.



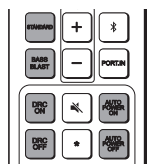
## Additional Device Connection

- 1 Connect to the external device as follows.



- 2 Set the input source by pressing **OPTICAL** on the remote control or pressing **F** on the unit repeatedly.

## Remote control

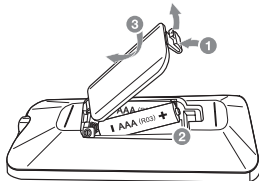


**STANDARD/BASS BLAST** : Selects the sound effect.

**DRC ON/OFF** : Makes comfortable sound at Dolby Digital.

**AUTO POWER ON/OFF**: Automatically turns on by an input source.

## Replacement of battery



## Additional Information

### Specification

Power consumption	Refer to the main label.
	Networked standby : 1.0 W (If all network ports are activated.)
AC adapter	<ul style="list-style-type: none"> <li>Model : NU040A220181</li> <li>Manufacturer : TCL Technoly Electronics (Huizhou) Co.,Ltd</li> <li>Input : 100 ~ 240 V ~ 50 / 60 Hz 1.5 A MAX</li> <li>Output : 22 V  1.81 A</li> </ul>
Dimensions (W x H x D)	Approx. 900 mm x 55 mm x 36 mm With foot
Amplifier (Total RMS Output power)	40 W RMS

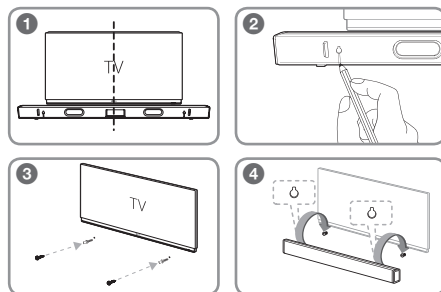
Design and specifications are subject to change without notice.

## How to disconnect the wireless network connection or the wireless device

Press button on the unit and **AUTO POWER OFF** button on the remote control for more than 5 seconds at the same time.

## Wall mounting (Optional)

You can mount the main unit on a wall by using holes on the rear of the unit. For details, download the online owner's manual <http://www.lg.com>



**BUY :**

## Declaration of Conformity



Hereby, LG Electronics declares that the radio equipment type Sound Bar is in compliance with Directive 2014/53/EU. The full text of the EU declaration of conformity is available at the following internet address:

<http://www.lg.com/global/support/cedoc/cedoc#>

For consideration of the user, this device should be installed and operated with a minimum distance of 20 cm between the device and the body.

Frequency range	Output power (Max.)
2402 to 2480 MHz	10 dBm

