

OWNER'S MANUAL

Wireless Speaker

Please read this manual carefully before operating
your set and retain it for future reference.

MODEL
AJ7



MFL70741004

www.lg.com

Copyright © 2018 LG Electronics Inc. All Rights Reserved.

Safety Information



CAUTION: TO REDUCE THE RISK OF ELECTRIC SHOCK DO NOT REMOVE COVER (OR BACK) NO USER-SERVICEABLE PARTS INSIDE REFER SERVICING TO QUALIFIED SERVICE PERSONNEL



This lightning flash with arrowhead symbol within an equilateral triangle is intended to alert the user to the presence of uninsulated dangerous voltage within the product's enclosure that may be of sufficient magnitude to constitute a risk of electric shock to persons.



The exclamation point within an equilateral triangle is intended to alert the user to the presence of important operating and maintenance (servicing) instructions in the literature accompanying the product.

WARNING: TO PREVENT FIRE OR ELECTRIC SHOCK HAZARD, DO NOT EXPOSE THIS PRODUCT TO RAIN OR MOISTURE.

CAUTION: The apparatus should not be exposed to water (dripping or splashing) and no objects filled with liquids, such as vases, should be placed on the apparatus.

WARNING: Do not install this equipment in a confined space such as a book case or similar unit.

CAUTION: Do not use high voltage products around this product. (ex. Electrical swatter) This product may malfunction due to electrical shock.

CAUTION: Do not block any ventilation openings. Install in accordance with the manufacturer's instructions.

Slots and openings in the cabinet are provided for ventilation and to ensure reliable operation of the product and to protect it from over heating. The openings shall never be blocked by placing the product on a bed, sofa, rug or other similar surface. This product should not be placed in a built-in installation such as a bookcase or rack unless proper ventilation is provided or the manufacturer's instruction has been adhered to.

NOTICE: For safety marking information including product identification and supply ratings, please refer to the main label on the bottom or the other surface of the product.

CAUTION concerning the Power Cord

The Power Plug is the disconnecting device. In case of an emergency, the Power Plug must remain readily accessible.

Check the specification page of this owner's manual to be certain of the current requirements.

Do not overload wall outlets. Overloaded wall outlets, loose or damaged wall outlets, extension cords, frayed power cords, or damaged or cracked wire insulation are dangerous. Any of these conditions could result in electric shock or fire. Periodically examine the cord of your device, and if its appearance indicates damage or deterioration, unplug it, discontinue use of the device, and have the cord replaced with an exact replacement part by an authorized service center. Protect the power cord from physical or mechanical abuse, such as being twisted, kinked, pinched, closed in a door, or walked upon. Pay particular attention to plugs, wall outlets, and the point where the cord exits the device.

This device is equipped with a portable battery or accumulator.

How to Safely remove the batteries or the battery pack from the equipment:

To Remove the old batteries or battery pack, follow the assembly steps in reverse order. To prevent contamination of the environment and bring on possible threat to human and/or animal health, the old batteries or the battery pack must be put in an appropriate container at designated collection points. Do not dispose of batteries or battery pack together with other waste. It is recommended that you use local, free reimbursement systems batteries or battery packs, (may not be available in your area). The batteries or the battery pack should not be exposed to excessive heat such as sunshine, fire or the like.

CAUTION: No naked flame sources, such as lighted candles, should be placed on the apparatus.

Symbols

~	Refers to alternating current (AC).
==	Refers to direct current (DC).
⊞	Refers to class II equipment.
⏻	Refers to stand-by.
I	Refers to "ON" (power).
⚡	Refers to dangerous voltage.

Table of Contents

1 Getting Started

- 2 Safety Information
- 6 Unique Features
- 7 Playable file Requirement
 - 7 – Playable file
- 7 – Compatible USB Devices
- 7 – USB device requirement
- 8 Top / Front panel
- 10 Rear panel
- 11 Remote control

2 Connecting

- 13 AC Power Cord Connection
- 13 Antenna Connection
- 14 Optional Equipment Connection
 - 14 – PORT.IN Connection
 - 14 – USB Connection

3 Operating

- 15 Basic Operations
 - 15 – USB Operations
 - 16 – Selecting a file or folder
- 16 Other operations
 - 16 – Turn off the sound temporarily
 - 16 – Sleep Timer Setting
 - 16 – Mood light
 - 17 – Auto display dimmer
 - 17 – Displaying information
 - 17 – Auto power down
 - 17 – AUTO POWER On
 - 18 – Auto function change
- 18 Sound adjustment
 - 18 – Setting the sound mode
- 18 Adjust the Treble/Bass
- 19 Using BLUETOOTH® wireless technology
 - 19 – Listening to music stored on the Bluetooth devices
- 22 Using the Music Flow Bluetooth App
 - 22 – About “Music Flow Bluetooth” App
 - 22 – Install “Music Flow Bluetooth” App onto Your Bluetooth Device
 - 23 – Activate Bluetooth with “Music Flow Bluetooth” App
- 24 Radio Operations
 - 24 – Listening to the radio
 - 24 – Improving poor FM reception
 - 24 – Presetting the Radio Stations
 - 24 – Deleting all the saved stations
 - 25 – Seeing information about a Radio station

4 Troubleshooting

- 26 Troubleshooting
- 26 – General

5 Appendix

- 27 General specifications
- 28 Trademarks and licenses
- 28 Maintenance
- 28 – Handling the Unit

1

2

3

4

5

Unique Features

BLUETOOTH®

Listens to music stored on your **Bluetooth** device.

Music Flow Bluetooth

Music Flow Bluetooth is an app designed to let you take control of some of LG's latest audio devices.
(Page 22-23)

Portable In

Listens to music from your portable device. (MP3, Notebook, etc.)

Playable file Requirement

Playable file

Sampling Frequency

MP3 : within 32 to 48 kHz

WMA : within 32 to 48 kHz

OGG : within 32 to 96 kHz

FLAC : 32 kHz, 44.1 kHz, 48 kHz, 88.2 kHz, 96 kHz, 176.4 kHz and 192 kHz (16 bit/ 24 bit)

WAV : 32 kHz, 44.1 kHz, 48 kHz, 88.2 kHz, 96 kHz, 176.4 kHz and 192 kHz (16 bit/ 24 bit)

Bitrate resolution

MP3 : within 80 to 320 kbps

WMA : within 56 to 128 kbps

OGG : within 64 to 500 kbps

- Maximum files : Up to 2,000
- Maximum directories : Up to 200
- A protected file by DRM (Digital rights management) cannot be played on the unit.
- Video files in the USB storage device can not be played.
- Depending on the performance of your USB device, playback may not work well.
- The file requirements are not always compatible.
- There may have some restrictions by file features and media server's ability.

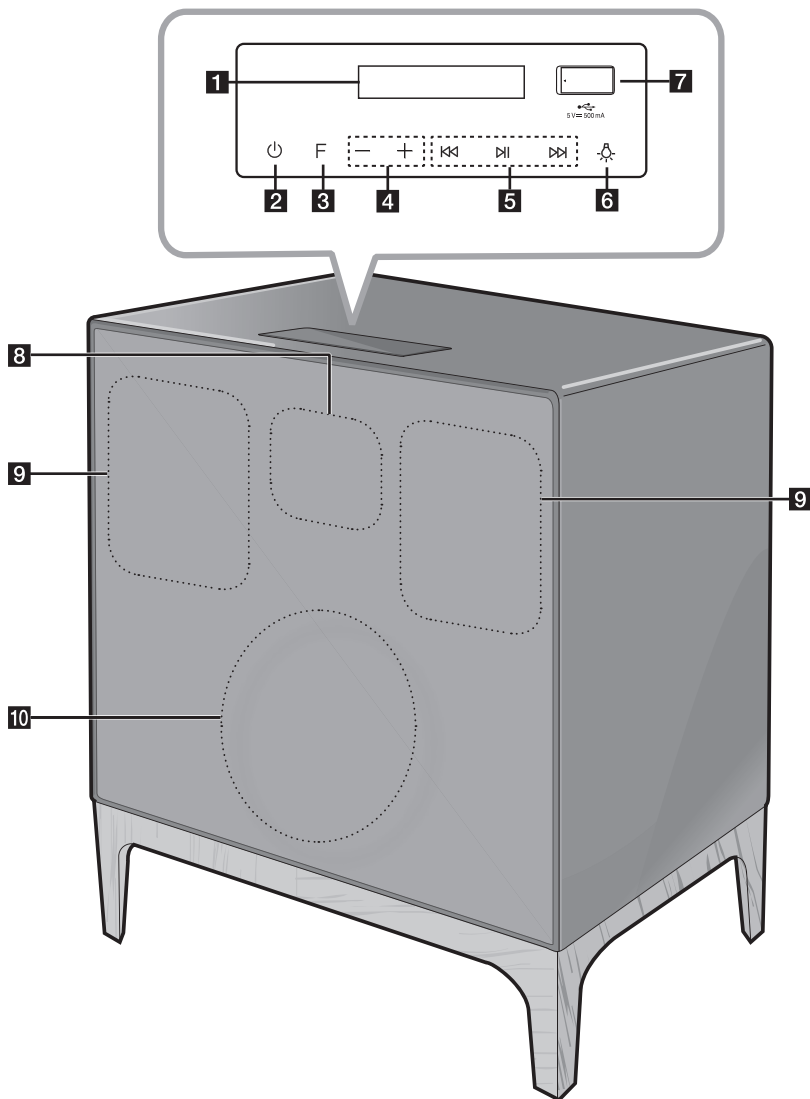
Compatible USB Devices

- MP3 Player : Flash type MP3 player.
- USB Flash Drive :
Devices that support USB2.0 or USB1.1.
- The USB function of this unit does not support all USB devices.

USB device requirement

- Devices which require additional program installation when you have connected it to a computer, are not supported.
- Do not extract the USB device while in operation.
- For a large capacity USB, it may take longer than a few minute to be searched.
- To prevent data loss, back up all data.
- If you use a USB extension cable or USB hub, the USB device is not recognized.
- The exFAT file system is not supported on this unit. (FAT16/FAT32/NTFS systems are available.)
- This unit recognizes up to 2,000 files.
- External HDD, Card readers, Locked devices, or hard type USB devices are not supported.
- USB port of the unit cannot be connected to PC. The unit cannot be used as a storage device.
- Some USB may not work with this unit.
- If the device name is unavailable, “_” will be displayed.

Top / Front panel



! Note

Hard wood leg parts are made by cutting and attaching original wood, so there are various colors and patterns. And it is normal condition.

1 Display window

2 ⏻ (Standby)

Turns the power on or off.

3 F (Function)

Selects the function and input source.

Input source / Function	Display
USB	USB
Portable input	PORTABLE
Bluetooth	BT
Radio	FM

4 -/+ (Volume)

Adjusts speaker volume.

5 ⏮/ ⏭ (Skip/Search)

- Skips backward or forward.
- Searches for a section within a file.
- Selects the radio stations.

⏸ (Play/Pause)

- Starts or pauses playback.
- Turns on or off the Bluetooth connection lock. (Page 21)
- Stores programme of Radio. (Page 24)
- Deletes the saved stations. (Page 24)

6 🌙 (Mood light)

Adjusts mood light.

7 USB Port

You can play sound files by connecting the USB device.

! Note

Open USB cover by using your finger to connect USB.



! Note

Precautions in using the touch buttons

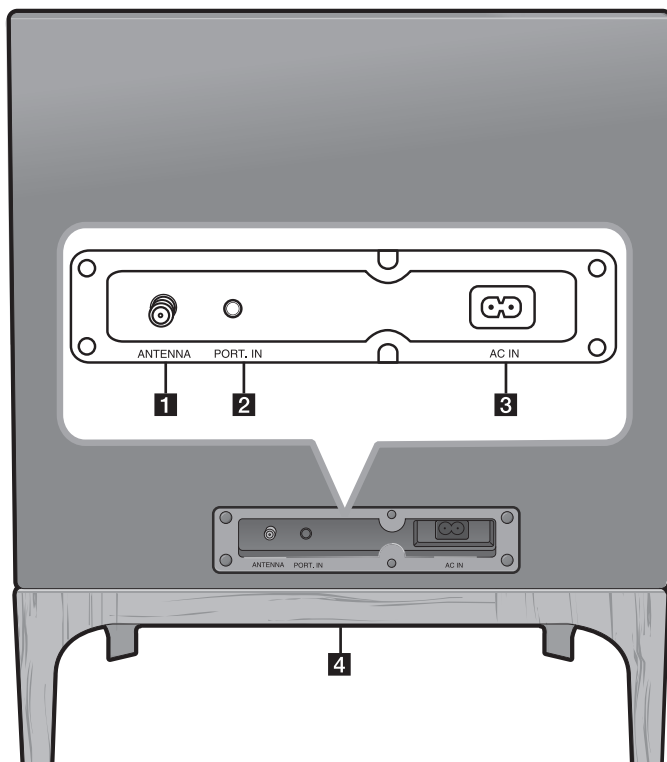
- Use the touch buttons with clean and dry hands.
 - In a humid environment, wipe out any moisture on the touch buttons before using.
- Do not apply too much pressure on the touch buttons.
 - If you apply too much pressure, it can damage the sensor of the touch buttons.
- Do not touch the button too quickly.
 - Touch the button that you want to work in order to operate the function correctly.
- Be careful not to have any conductive material such as metallic object on the touch buttons. It can cause malfunctions.

8 Remote sensor

9 Speaker

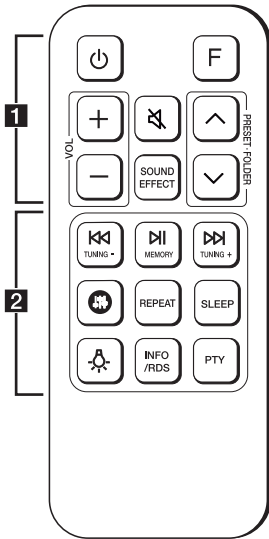
10 Woofer

Rear panel

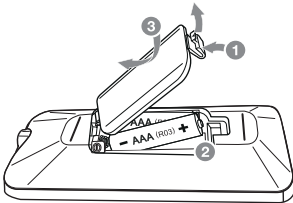


- 1** **ANTENNA** : Connect a FM antenna.
- 2** **PORT (Portable).IN** : Connect a portable device.
- 3** **AC IN** socket : Connect an AC power cord.
- 4** Mood light

Remote control



Replacement of battery



Remove the battery cover on the rear of the remote control, and insert the battery with **+** and **-** matched correctly.

..... **1**

⏻ (Standby) : Turns the power on or off.

F (Function) : Selects the function and input source.

Input source / Function	Display
USB	USB
Portable input	PORTABLE
Bluetooth	BT
Radio	FM

VOL (Volume) **+/-** : Adjusts speaker volume.

🔇 (Mute) : Mutes the sound.

SOUND EFFECT : Chooses sound impressions.

PRESET-FOLDER **^/v** :

- Chooses a preset number for a radio station.
- Searches for a folder on USB device. When a USB containing files in several folders is being played, press **PRESET-FOLDER** **^/v** to select the folder you want to play.

..... **2**

⏮/⏭ (Skip/Search) :

- Skips backward or forward.
- Searches for a section within a file.

TUNING-/+ : Selects the radio stations.

⏸ (Play/Pause) :

- Starts or pauses playback.
- Turns on or off the Bluetooth connection lock. (Page 21)

MEMORY

- Stores programme of Radio. (Page 24)
- Deletes the saved stations. (Page 24)

🔊 : Adjusts sound level of treble and bass.

REPEAT :

- Listens to your files repeatedly or randomly.
- Selects stereo/mono.

SLEEP : Sets the system to turn off automatically at a specified time.





💡 : Adjusts the mood light.

INFO/RDS :

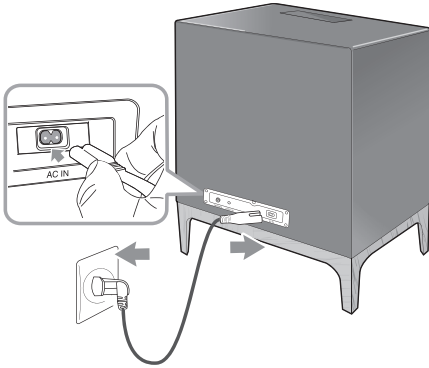
- Sees information about music files on USB device.
- Sees the name of connected all **Bluetooth** device in **Bluetooth** mode.
- RDS (Radio Data System) (Page 25)

PTY: Searches radio stations by radio type. (Page 25)

Useful functions for using the unit

Function	Description	To do	Do this
BT Lock On/Off (Page 21)	It allows you to connect a Bluetooth device only on BT (Bluetooth) functions. Initial setting of this function was set to off.	ON	Press and hold  for 5 seconds in BT (Bluetooth) function.
		OFF	Press and hold  for 5 seconds in BT (Bluetooth) function.
Auto Power On (Page 17)	It allows the unit to turn on automatically by input signals : BT (Bluetooth)	ON	Turn off the unit by pressing  on the unit for 5 seconds.
		OFF	Turn off the unit by pressing  on the unit for 5 seconds.

AC Power Cord Connection



1. Connect one end of the AC power cord (included) to the **AC IN** socket.
2. Plug the other end into the wall outlet.

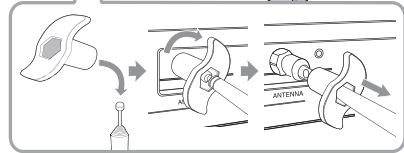
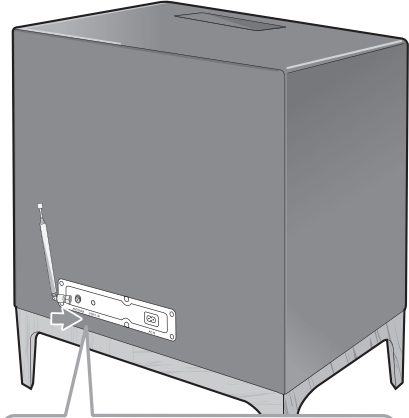


Note

Unplug the AC power cord from the wall outlet if you do not use for an extended period of time.

Antenna Connection

Connect the supplied FM antenna for listening to the radio.



1. Attach fix tool to hexagon nut on the antenna.
2. Connect the antenna to antenna connector and fix the antenna by turn the fix tool clockwise.
3. Detach the fix tool from antenna.



Note

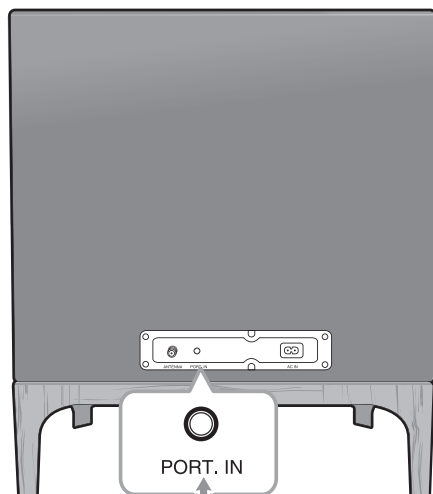
You can improve radio reception by adjusting length and angle the antenna.

Optional Equipment Connection

PORT. IN Connection

The unit can be used to play the music from many types of portable player or external device.

1. Connect the portable player to the **PORT. IN** connector of the unit.
2. Turn the power on by pressing ⏻ .
3. Press **F** to select PORTABLE function.
4. Turn on the portable player or external device and start it playing.



3.5 mm stereo cable

MP3 player etc.

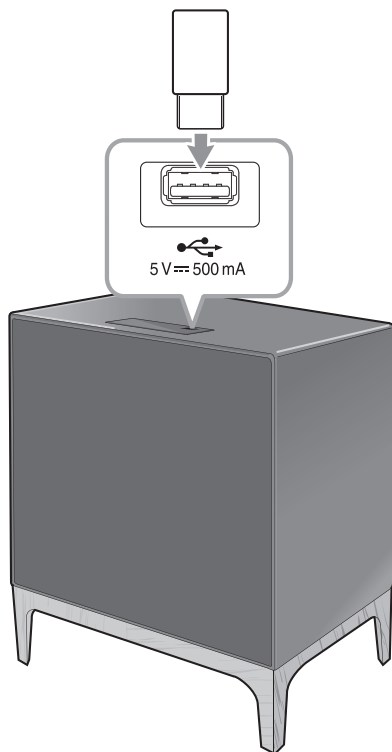


Note

Automatically switches to the PORTABLE function when you connect the portable device to the **PORT. IN** connector.

USB Connection

Connect a USB device (or MP3 player, etc.) to the USB ports on the unit.



Note

Removing the USB device from the unit :

1. Choose a different function/mode.
2. Remove the USB device from the unit.

Basic Operations

USB Operations

- 1. Connect the USB device to the USB port.
- 2. Select USB function by pressing F.

To	Do this
Playback	Press ▶ .
Pause	During playback, press ⏸ .
Skip to the next/previous file	During playback, press ▶▶ to go to the next file. Playing less than 2 seconds, press ◀◀ to go to the previous file. Playing after 3 seconds, press ◀◀ to go to the beginning of the file.
Search for a section within a file	Press and hold ◀◀/▶▶ during playback and release it at the point you want to listen to.
Playing repeatedly or randomly	Press REPEAT on the remote control repeatedly. Refer to the note for details about the display change OFF → ONE → FOLDER → ALL → SHUFFLE .
Search a folder	Press PRESET-FOLDER ▲/▼ on the remote control.
Resume playback	This unit memorizes a current song which is played before changing the function or turning off the unit.

!

Note

- The resume point may be cleared when you pull out the power cord.
- Repeat/Random playback operates as follows.

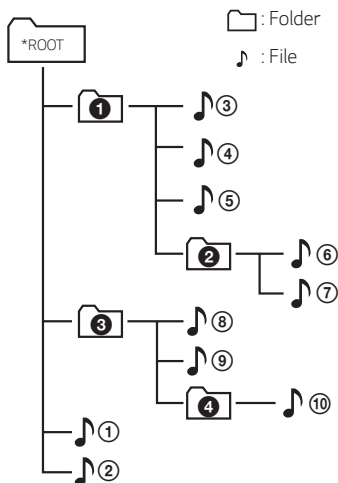
On Display	Description
OFF	Plays songs on USB device in order.
ONE	Plays a same song repeatedly.
FOLDER	Plays songs in a folder repeatedly.
ALL	Plays all the songs on USB device repeatedly.
SHUFFLE	Plays all the songs once randomly, and stops the playback.

Selecting a file or folder

1. Press **PRESET-FOLDER** \wedge/V repeatedly until a desired folder appears.
2. Press **DI** to play it. The first file of folder will be played.

! Note

- Folders and files on the USB are recognized as below.



- If there is no file in a folder, the folder will not appear.
- File will be played from file 1 to file 10 one by one.
- Files will be played in order recorded and it may be different depending on the record circumstances.
- This unit can display file or folder names that contain numbers or English characters only.
- *ROOT : The first screen you can see when a this unit recognize the USB is "ROOT".

Other operations

Turn off the sound temporarily

Press MUTE (Mute) to mute your unit.

You can mute your unit, for example, to answer the telephone, "MUTE" is displayed in the display window.

To cancel it, press MUTE (Mute) again on the remote control or change the volume level.

Sleep Timer Setting

Press **SLEEP** on the remote control repeatedly to select delay time between 10 and 180 minutes. After the delay time, the unit will be turned off.

To cancel the sleep function, press **SLEEP** on the remote control repeatedly until "OFF" appears.

! Note

You can check the remaining time before the unit is turned off. Press **SLEEP** on the remote control to check or change the remaining time.

Mood light

Press MOOD repeatedly to adjust mood light or turn off.

Turn on (1 level brightness) \rightarrow 2 level brightness \rightarrow Turn off

! Note

You can adjust mood light even if this unit is turned off.

Auto display dimmer

The Display window will be dimmed automatically if there is no key input for 15 seconds.

When you press any button, the display window will be brighten.

Displaying information

You can display various information by pressing **INFO/RDS** on the remote control.

USB : file name

Bluetooth : Connected device's name

Auto power down

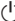
This unit will turn itself off to save electricity in the case were the main unit is not connected to an external device and is not used for 15 minutes. The unit will also turn itself off after six hours if the main unit has been connected to another device using the analog inputs.

How to disconnect the wireless network connection or the wireless device.

Turn off the unit by pressing the power button for more than 5 seconds.

AUTO POWER On

This unit automatically turns on by **Bluetooth** signal. If you try to connect your **Bluetooth** device, this unit turns on and connects your **Bluetooth** device. You can play your music.

When you turn off this unit by pressing  on the unit for 5 seconds each time, you can turn on or off the AUTO POWER function.

On Display	Description
ON-AUTO POWER	AUTO POWER function is turned on.
OFF-AUTO POWER	AUTO POWER function is turned off.



Note

- Depending on the connected device, the unit turns on but **Bluetooth** function may not be connected.
- If you disconnect **Bluetooth** connection by this unit, some **Bluetooth** devices try to connect to the unit continually. Therefore it is recommended to disconnect the connection before turning off the unit.
- If you try to connect to the "Music Flow Bluetooth" app, **Bluetooth** function of this unit is turned on.
- If you have already paired with this unit, automatically this unit can turn on by an input source when this unit is turned off.
- When this unit is turned off, the **Bluetooth** device cannot search this unit.
- Depending on the connected device, this function may not operate.

Auto function change

When you try to connect Bluetooth device

When you try to connect your **Bluetooth** device to this unit, **Bluetooth** function is selected. Play your music on the **Bluetooth** device.

When 3.5 mm stereo cable is connected

When you connect the portable device to the **PORT.IN** connector, **PORTABLE** function is selected. Play your music on the portable device.



Note

- This function only works with devices that were previously connected.
- If the **Bluetooth** connection lock function is set, **Bluetooth** connection will be only available on **Bluetooth** function.

Sound adjustment

Setting the sound mode

This unit provides wide sound effect. You can select a sound effect by using **SOUND EFFECT** on the remote control.

On Display	Description
ON - SOUND EFFECT	You can enjoy wide sound field and rich bass.
OFF - SOUND EFFECT	You can enjoy optimized sound.




Note

If you turn on the sound effect, you can experience sound effect by UK's high-end audio company MERIDIAN.

Adjust the Treble/Bass

You can adjust the sound level of Treble and Bass as your preference.

TREBLE / BASS : -6 dB to 6 dB

1. Press  button on the remote control repeatedly to select TREBLE or BASS.
2. Press **+/-** button to adjust the sound level.

Using BLUETOOTH® wireless technology

About Bluetooth

Bluetooth is wireless communication technology for short range connection.

The sound may be interrupted when the connection interfered by the other electronic wave or you connect the **Bluetooth** in the other rooms.

Connecting individual devices under **Bluetooth** wireless technology does not incur any charges. A mobile phone with **Bluetooth** wireless technology can be operated via the Cascade if the connection was made via **Bluetooth** wireless technology.

- Available Devices : Smart phone, MP3, Notebook, etc.
- Version : 4.0
- Codec : SBC

Bluetooth Profiles

In order to use **Bluetooth** wireless technology, devices must be able to interpret certain profiles. This unit is compatible with following profile.

A2DP (Advanced Audio Distribution Profile)

Listening to music stored on the Bluetooth devices

Pairing your unit and Bluetooth device

Before you start the pairing procedure, make sure the **Bluetooth** feature is activated on your **Bluetooth** device. Refer to your **Bluetooth** device's user guide. Once a pairing operation is performed, it does not need to be performed again.

1. Select the input source to BT (**Bluetooth**) by pressing **F** button on the remote control or unit repeatedly.
"BT" → "BT READY" appears in the display window in order.
2. Operate the **Bluetooth** device and perform the pairing operation. When searching for this unit with the **Bluetooth** device, a list of the devices found may appear in the **Bluetooth** device display depending on the type of **Bluetooth** device. Your unit appears as "LG AJ7 (XX)".

Note

- XX means the last two digits of **Bluetooth** address. For example, if your unit has a **Bluetooth** address such as 9C:02:98:4A:F7:08, you will see "LG AJ7 (08)" on your **Bluetooth** device.
- Depending on the **Bluetooth** device type, some devices may have a different pairing process. Enter the PIN code (0000) as needed.
- You can connect this unit with up to 3 **Bluetooth** devices simultaneously using the same method as described above, only in the **Bluetooth** function.
- The multi phone pairing connection is only supported on Android devices. (Multi phone pairing connection may not be supported depending on the connected device specifications.)
- Removable/detachable **Bluetooth** devices (Ex: Dongle etc.) will not support multi phone pairing.

3. When this unit is successfully connected with your **Bluetooth** device,
"PAIRED" → Your device's name → "BT" appears in the display window in this order.

! Note

- "PAIRED" will momentarily appear on the display when you connect other devices for multi phone pairing.
- If the device name is unavailable, " _ " will be displayed.

4. Listen to music.

To play a music stored on your **Bluetooth** device, refer to your **Bluetooth** device's user guide.

! Note

- When using **Bluetooth** technology, you have to make a connection between the unit and the **Bluetooth** device as close as possible and keep the distance.
However, it may not work well in certain situations as described below :
 - There is an obstacle between the unit and the **Bluetooth** device.
 - There is a device using same frequency with **Bluetooth** technology such as a medical equipment, a microwave or a wireless LAN device.
- If **Bluetooth** connection does not work well, try pairing it again.
- Even if this unit connected up to 3 **Bluetooth** devices in the **Bluetooth** mode, you can play and control music by using only one of the connected devices.

! Note

- The sound may be interrupted when the connection has interference from other electronic devices.
- Depending on the type of the device, you may not be able to use the **Bluetooth** function.
- You can enjoy wireless system using phone, MP3, Notebook, etc.
- The more distance between the unit and the **Bluetooth** device, the lower the sound quality becomes.
- **Bluetooth** connection will be disconnected when the unit is turned off or the **Bluetooth** device gets far from the unit.
- When **Bluetooth** connection is disconnected, connect the **Bluetooth** device to the unit again.
- When a **Bluetooth** device is not connected, "BT READY" appears on the display window.
- When you use the **Bluetooth** function, adjust the volume to a proper level on the **Bluetooth** device.
- When you connect **Bluetooth** device (iOS device etc.) to this unit or operate the device, the volume level can be synchronized with each other.
- **Bluetooth** connection will be disconnected when you change the **Bluetooth** function to the others. In "Music Flow Bluetooth" app connection, only one device which you are playing keeps **Bluetooth** connection. You can control the **Bluetooth** device with this unit but you cannot use sound output.
- When entering **Bluetooth** function, this unit automatically connect to **Bluetooth** device which is connected the last or playbacked the last. (Auto connection may not be supported depending on the connected device specifications.)

Controls connected Bluetooth device

You can control connected Bluetooth device by the unit; play, pause, skip.



Note

- Only Android OS and iOS is available to use this function.
- This function may not be supported depending on the **Bluetooth** device, or operated differently.

Bluetooth connection lock (BT LOCK)

You can limit **Bluetooth** connection to only BT (**Bluetooth**) to prevent unintended **Bluetooth** connection.

To turn on this function, press and hold **⏻** for about 5 seconds in BT (**Bluetooth**) function.

“BT LOCK” appears then you can limit **Bluetooth** connection.

To turn off this function, press and hold **⏻** for about 5 seconds in BT (**Bluetooth**) function.

“BT UNLOCK” appears.

On Display	Description
BT LOCK	BT LOCK is turned on.
BT UNLOCK	BT LOCK is turned off.



Note

Even if you set up **Bluetooth** connection lock to On, this unit turns on by Auto Power function.
Turn off Auto Power function to prevent it.

Using the Music Flow Bluetooth App

! Note

- Only Android OS is available to use "Music Flow Bluetooth" app with this unit.
- Additional data charges may occur if installed over 3G/4G, according to your device plan.
- It is recommended to use the latest version of app.

About "Music Flow Bluetooth" App

"Music Flow Bluetooth" app brings a suite of new features to this unit.

To enjoy more features, you are recommended to download and install free "Music Flow Bluetooth" app.

Install "Music Flow Bluetooth" App onto Your Bluetooth Device

There are two ways to install "Music Flow Bluetooth" App onto Your **Bluetooth** Device.

Install "Music Flow Bluetooth" App through QR code

1. Install "Music Flow Bluetooth" app through QR code. Use the scanning software to scan the QR code.



2. Tap an icon for installation.

! Note

- Make sure that your **Bluetooth** device is connected to the Internet.
- Make sure that your **Bluetooth** device has a scanning software application. If you don't have one, download one from "Google Android Market (Google Play Store)".
- Depending on the area, QR code may not work.

Install “Music Flow Bluetooth” App through “Google Android Market (Google Play Store)”

1. Tap the “Google Android Market (Google Play Store)” icon.
2. In the search bar, type in the “Music Flow Bluetooth” and search it.
3. In the search result list, find and tap “Music Flow Bluetooth” to start downloading **Bluetooth** app.
4. Tap an icon for installation.
5. Tap an icon for downloading.



Note

- Make sure that your **Bluetooth** device is connected to the Internet.
- Make sure that your **Bluetooth** device is equipped with “Google Android Market (Google Play Store)”.

Activate Bluetooth with “Music Flow Bluetooth” App

“Music Flow Bluetooth” app helps to connect your **Bluetooth** device to this unit.

1. Tap “Music Flow Bluetooth” app icon on the home screen to open “Music Flow Bluetooth” app, and go to the main menu.
2. If you want to get more information to operate, tap [Setting] and tap [Help] menu.



Note

- “Music Flow Bluetooth” app will be available in the software version as follow;
 - Android O/S : Ver 4.0.3 (or later)
- If you use “Music Flow Bluetooth” app for operation, there would be some differences between “Music Flow Bluetooth” app and the supplied remote control. Use the supplied remote control as necessary.
- Depending on the **Bluetooth** device, “Music Flow Bluetooth” app may not work.
- After connection of “Music Flow Bluetooth” app, music may be output from your device. In this case, try connecting procedure again.
- If you operate the other applications or change the settings on your **Bluetooth** device while using “Music Flow Bluetooth” app, “Music Flow Bluetooth” app may operate abnormally.
- When “Music Flow Bluetooth” app operates abnormally, check your **Bluetooth** device and the connection of “Music Flow Bluetooth” app and then try to connect again.
- Depending on the smart phone's operating system, you have some differences for “Music Flow Bluetooth” operation.
- Check **Bluetooth** setting on your **Bluetooth** device if “Music Flow Bluetooth” app connection does not work well.

Radio Operations

Be sure that FM antenna is connected. (Page 13)

Listening to the radio

1. Press **F** until FM appears in the display window.
The last received station is tuned in.
2. Auto tuning :
Press and hold **TUNING-/+** on the remote control or **KK/▷** on the unit for about two seconds until the frequency indication starts to change, then release. Scanning stops when the unit tunes in a station.

Or
Manual tuning :
Press **TUNING-/+** on the remote control or **KK/▷** on the unit repeatedly.
3. Adjust the volume by pressing **+/-**.

Improving poor FM reception

Press **REPEAT** the remote control. This will change the tuner from stereo to mono and usually improve the reception.

Presetting the Radio Stations

You can preset 10 stations for FM.

Before tuning, make sure to turn down the volume.

1. Press **F** until FM appears in the display window.
2. Select the desired frequency by pressing **TUNING -/+** on the remote control or **KK/▷** on the unit.
3. Press **MEMORY** on the remote control or or **▷** on the unit. A preset number will blink in the display window.
4. Press **PRESET-FOLDER ^/V** on the remote control to select the preset number you want.
5. Press **MEMORY** on the remote control or **▷** on the unit. The station is stored.
6. Repeat steps 2 to 5 to store other stations.
7. To listen a preset station, press **PRESET-FOLDER ^/V** buttons on the remote control.

Deleting all the saved stations

1. Press and hold **MEMORY** on the remote control or **▷** on the unit.
"DEL ALL?" will flash up on the display window
2. Press **MEMORY** on the remote control or or **▷** on the unit to erase all the saved radio stations.
"DELETED ALL" will scroll on the display window.

Seeing information about a Radio station

The FM tuner is supplied with the RDS (Radio Data System) facility. This shows information about the radio station being listened to. Press **INFO/RDS** on the remote control repeatedly to cycle through the various data types:

- | | |
|------------|---|
| PS | (Programme Service Name)
The name of the channel will appear in the display. |
| PTY | (Programme Type Recognition)
The programme type (e.g. Jazz or News) will appear in the display. |
| RT | (Radio Text)
A text message contains special information from the broadcast station.
This text may scroll across the display. |
| CT | (Time controlled by the channel)
This shows the time as broadcast by the station. |

You can search the radio stations by programme type by pressing **INFO/RDS** on the remote control. The display will show the last PTY in use. Press **PTY** one or more times to select your preferred programme type. Press and hold **KK/BB**. The tuner will search automatically. When a station is found the search will stop.

Troubleshooting

General


Problem	Cause & Solution
The unit does not work properly.	<ul style="list-style-type: none">• Turn off the power of this unit and the connected external device (TV, Woofer, DVD-player, Amplifier, etc.) and turn them on again.• Disconnect the power cord of this unit and the connected external device (TV, Woofer, DVD-player, Amplifier, etc.) and then try connecting again.• Previous setting may not be saved when device power is shut off.
No Power.	<ul style="list-style-type: none">• The power cord is not plugged in. Plug in the power cord.• Check whether electricity failed. Check the condition by operating other electronic devices.
No sound.	<ul style="list-style-type: none">• Check whether you select right function. Press function button and check the selected function.
Radio stations cannot be tuned in properly.	<ul style="list-style-type: none">• The antenna is positioned or connected poorly. Connect the antenna securely.• The signal strength of the radio station is too weak. Tune to the station manually.• No stations have been preset or preset stations have been cleared (when tuning by scanning preset channels). Preset some radio stations, see page 24 for details.
The remote control does not work properly.	<ul style="list-style-type: none">• The remote control is too far from the unit. Operate the remote control within about 7 m (23 feet).• There is an obstacle in the path of the remote control and the unit. Remove the obstacle.• The batteries in the remote control are exhausted. Replace the batteries with new ones.
The unit does not connect with Bluetooth device	<ul style="list-style-type: none">• Turn off the Bluetooth connection lock function. (Page 21)• Turn off and on again the Bluetooth device. (Page 19)

General specifications

General	
Power requirements	Refer to the main label on the unit.
Power consumption	Refer to the main label on the unit.
	Networked standby : 0.5 W (If all network ports are activated.)
Dimensions (W x H x D)	Approx. 510.0 mm x 605.0 mm x 300.0 mm
Operating temperature	5 °C to 35 °C
Operating humidity	5 % - 90 %

Inputs	
Portable in (PORT. IN)	0.5 Vrms (3.5 mm stereo jack) x 1

Tuner	
FM Tuning Range	87.5 to 108.0 MHz or 87.50 to 108.00 MHz

System	
Frequency Response	50 to 20,000 Hz
Signal-to-noise ratio	USB : 105 dB
	PORT. IN : 90 dB
Dynamic range	24 bit : 105 dB , 16 bit : 95 dB
Bus Power Supply (USB)	5 V  500 mA
Distortion ratio	0.05 % (1 W spot, 1 kHz)

Amplifier (RMS Output power)	
Total output	160 W RMS
Front	40 W RMS x 2 (8 Ω at 1kHz, 0.1 % THD)
Rear	80 W RMS (4 Ω at 80Hz, 0.1 % THD)

- Design and specifications are subject to change without notice.

Trademarks and licenses



The **Bluetooth®** word mark and logos are registered trademarks owned by the Bluetooth SIG, Inc. and any use of such marks by LG Electronics is under license.

Other trademarks and trade names are those of their respective owners

Maintenance

Handling the Unit

When shipping the unit

Please save the original shipping carton and packing materials. If you need to ship the unit, for maximum protection, re-pack the unit as it was originally packed at the factory.

Keeping the exterior surfaces clean

Do not use volatile liquids such as insecticide spray near the unit. Wiping with strong pressure may damage the surface. Do not leave rubber or plastic products in contact with the unit for a long period of time.

Cleaning the unit

To clean the player, use a soft, dry cloth. If the surfaces are extremely dirty, use a soft cloth lightly moistened with a mild detergent solution. Do not use strong solvents such as alcohol, benzine, or thinner, as these might damage the surface of the unit.

Maintaining the Unit

The unit is a high-tech, precision device. If the optical pick-up lens and disc drive parts are dirty or worn, the picture quality could be diminished. For details, please contact your nearest authorized service center.

