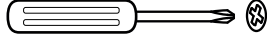


ART10*

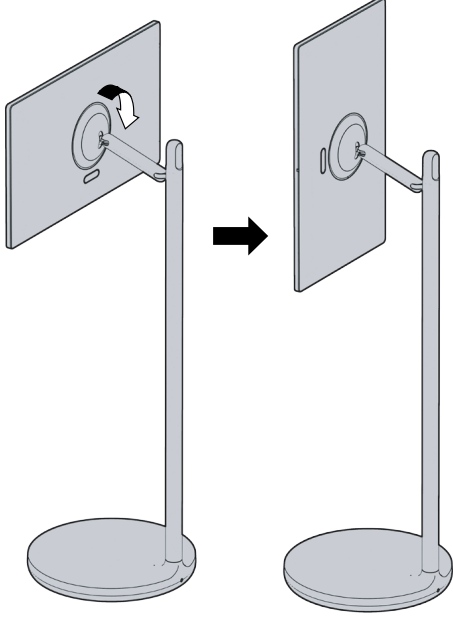
Disassembly

التفكيك



1

Position the screen vertically.
قم بوضع الشاشة بشكل عمودي.



2

Push the top of the screen lightly in the direction of the arrow to disassemble a part of the cover space.
اضغط بلطف على أعلى الشاشة في اتجاه السهم لفتح جزء من مساحة الغطاء.

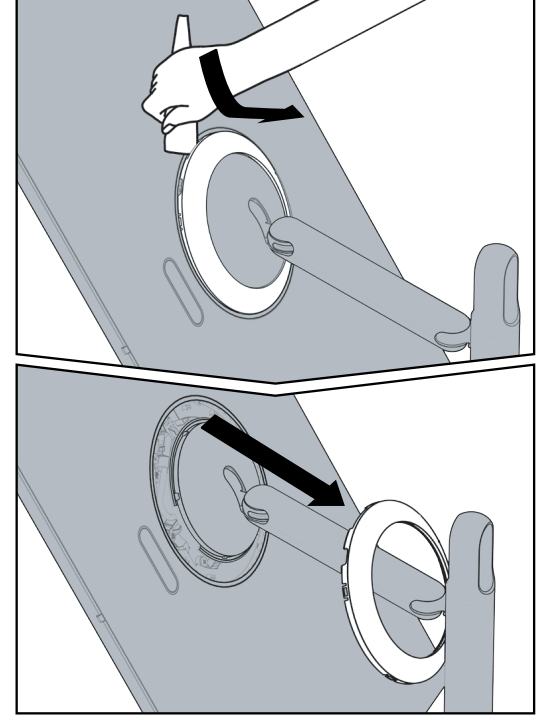


※ Caution
Avoid pushing it hard.
There is a risk of damage.

※ تحذير
تجنب الضغط الشديد
هناك خطر التلف

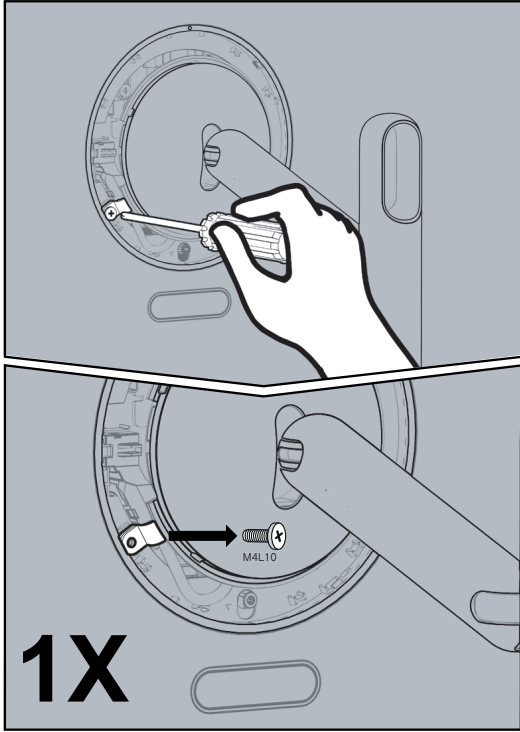
3

Use a wedge or pull it with your hand to completely disassemble the cover.
استخدم مسنداً أو اسحب باليد لتفكيك الغطاء بالكامل.



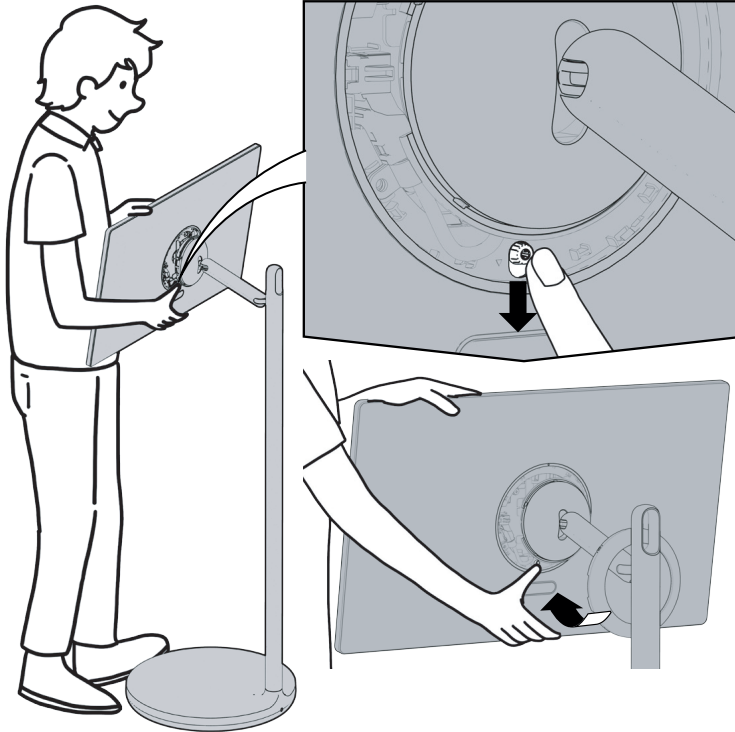
4

Position the screen horizontally and disassemble the cable holder screw.
قم بتمرير الشاشة بشكل أفقي وتفكيك برغي حامل الكابل.



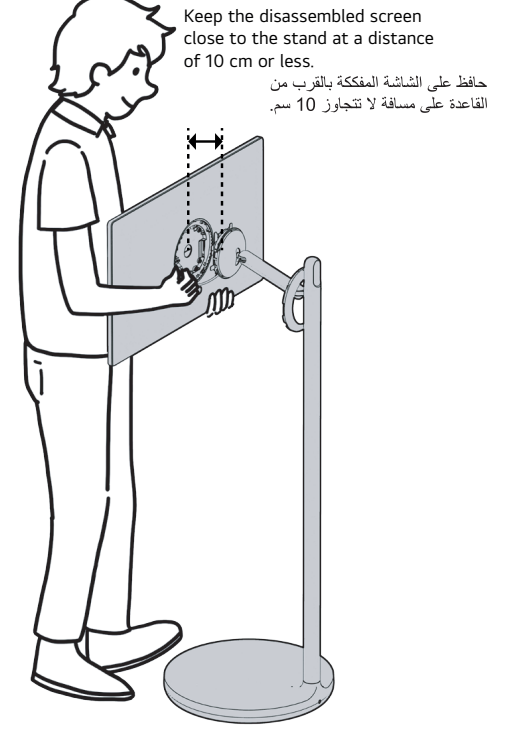
5

Lower the rear lever and push the bottom of the screen forward, as shown in the figure.
اخفض الرافعة الخلفية واضغط أسفل الشاشة إلى الأمام، كما هو موضح في الشكل.



6

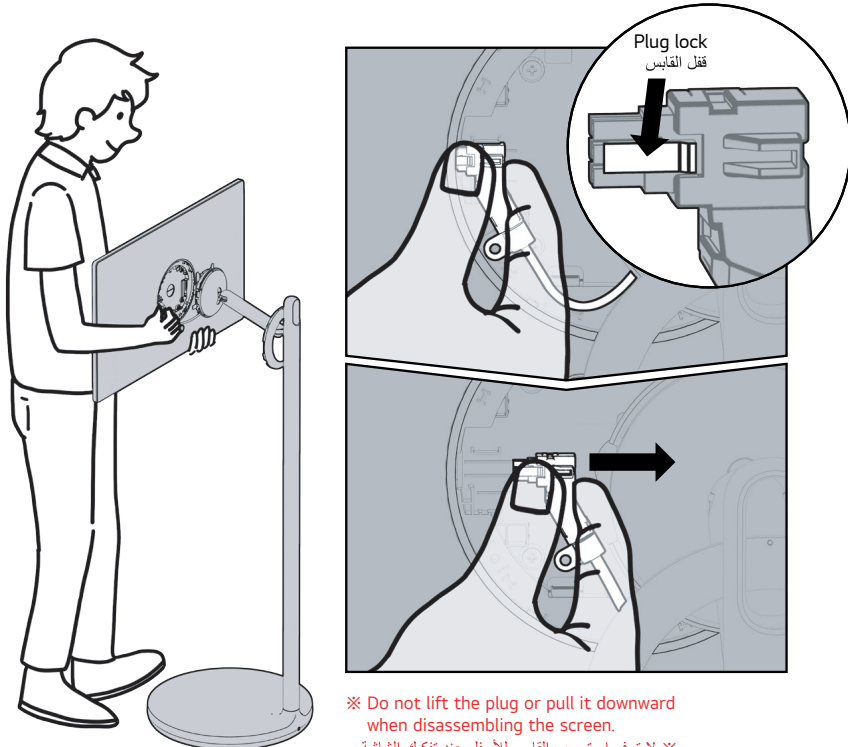
Lift the screen, separate the top of the screen, and hold the screen.
ارفع الشاشة، افصل أعلى الشاشة، واحمل الشاشة.



Keep the disassembled screen close to the stand at a distance of 10 cm or less.
حافظ على الشاشة المفككة بالقرب من القاعدة على مسافة لا تتجاوز 10 سم.

7

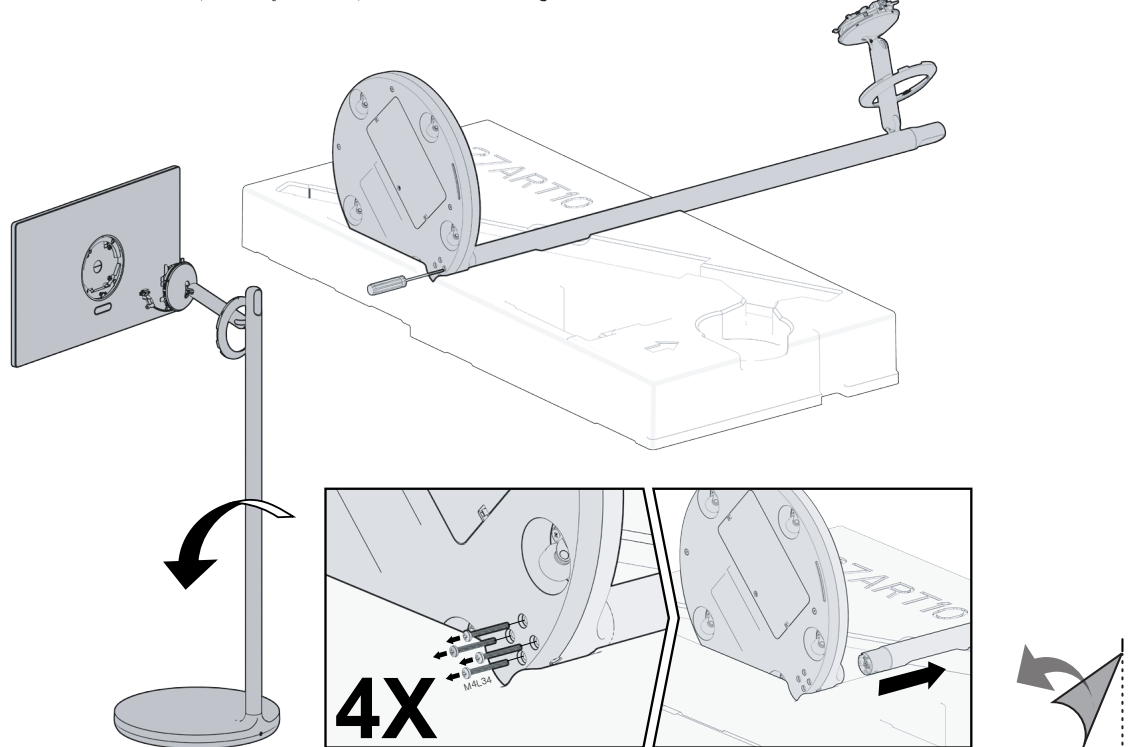
Press the plug lock, push it in the direction of the arrow, and then disassemble the screen completely.
اضغط على قفل القابس، واضغطه في اتجاه السهم، ثم فك الشاشة بالكامل.



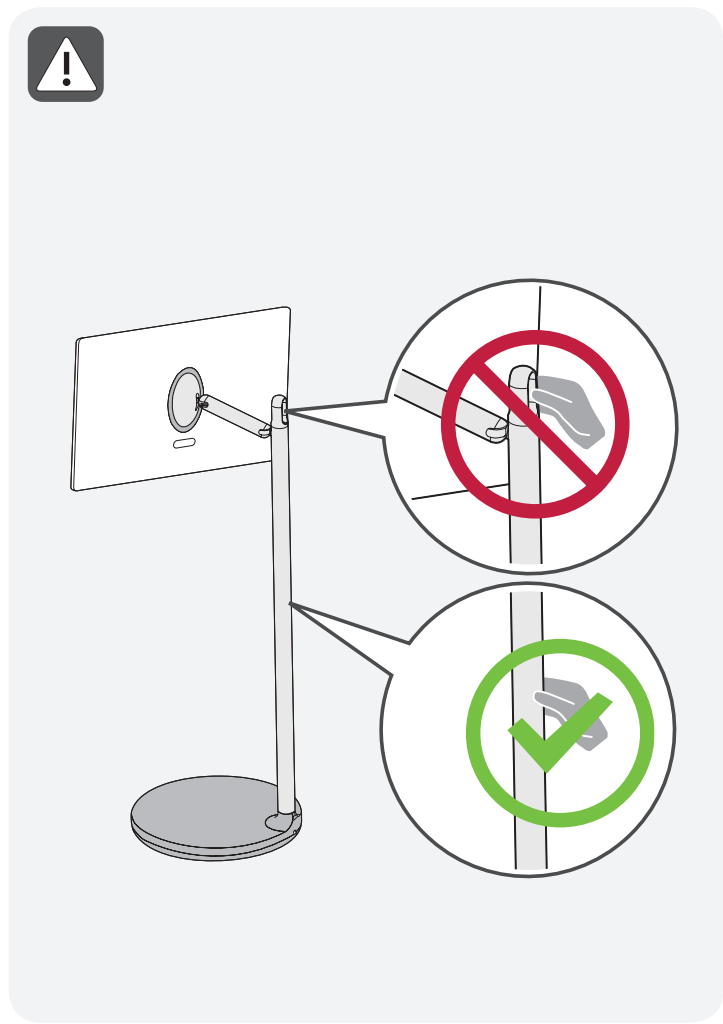
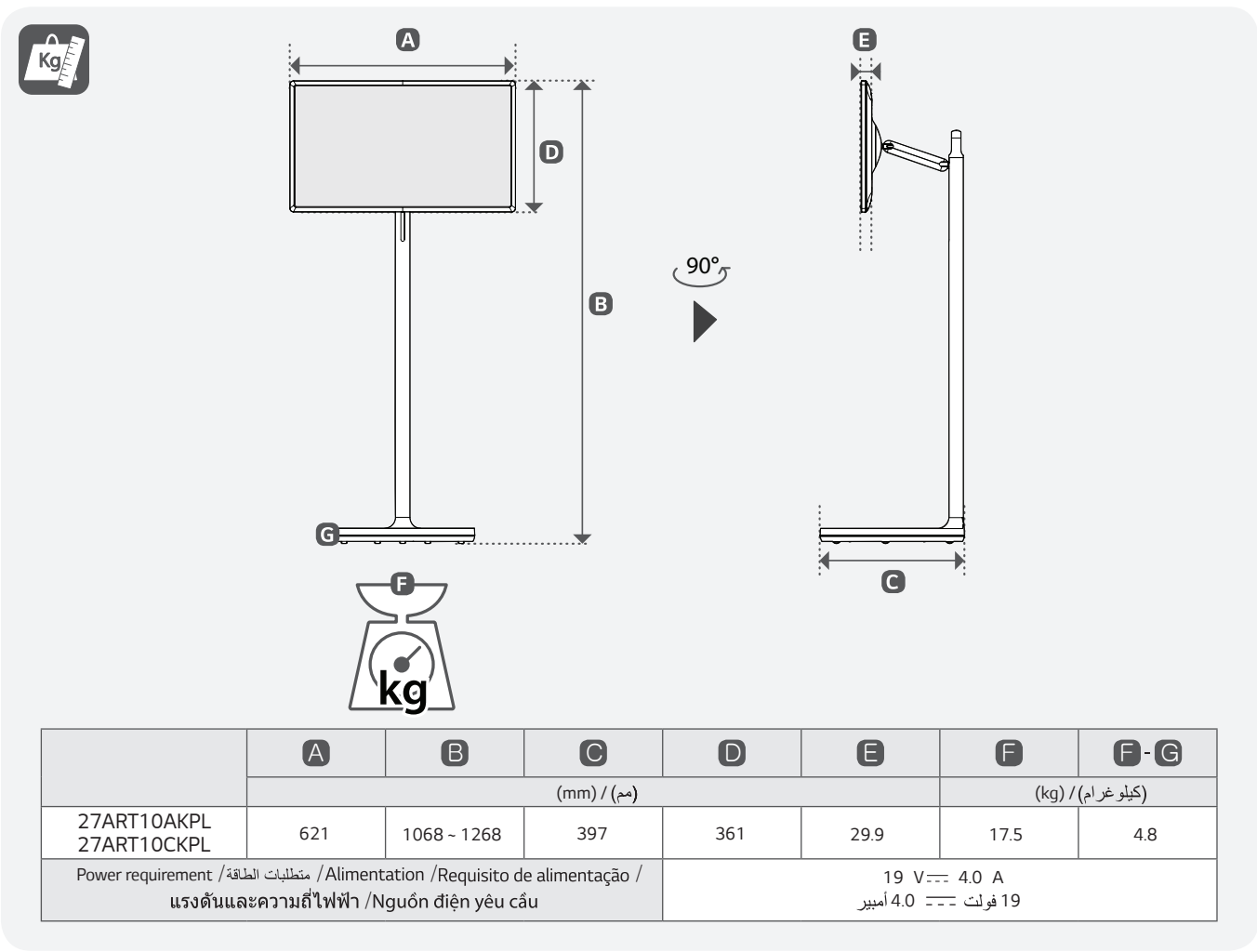
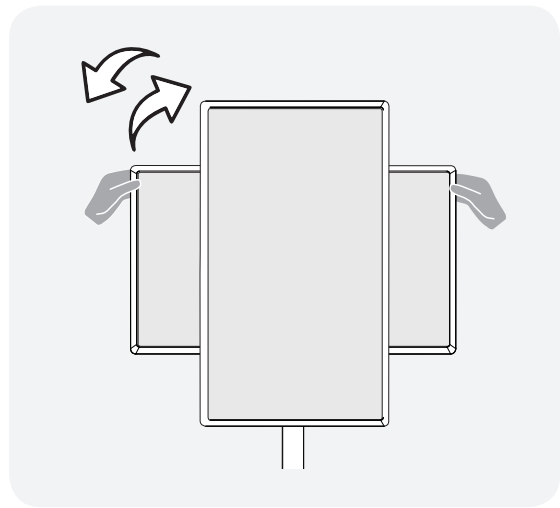
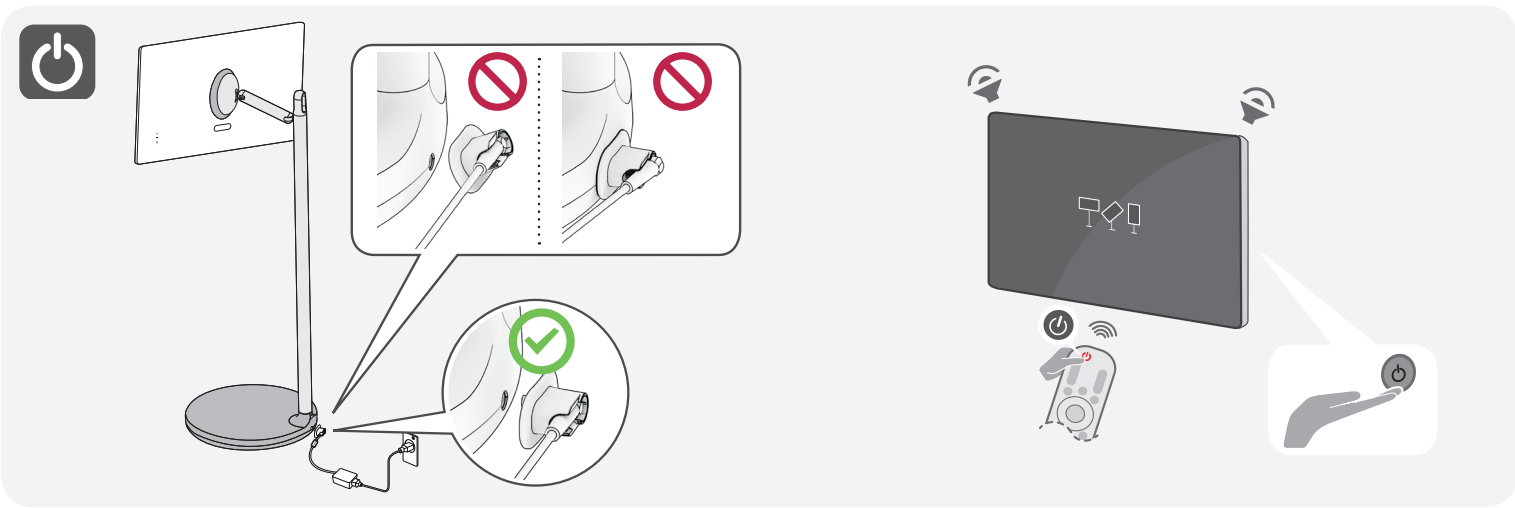
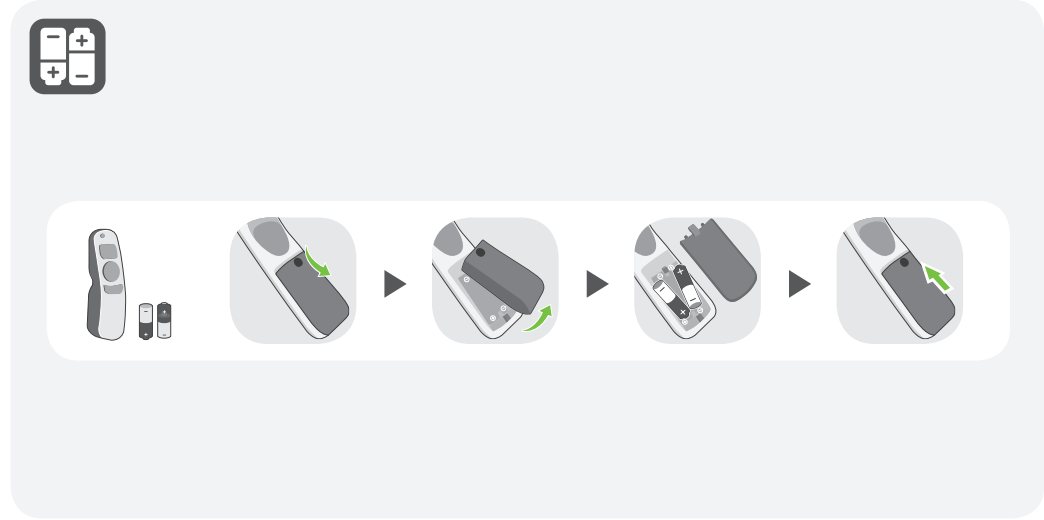
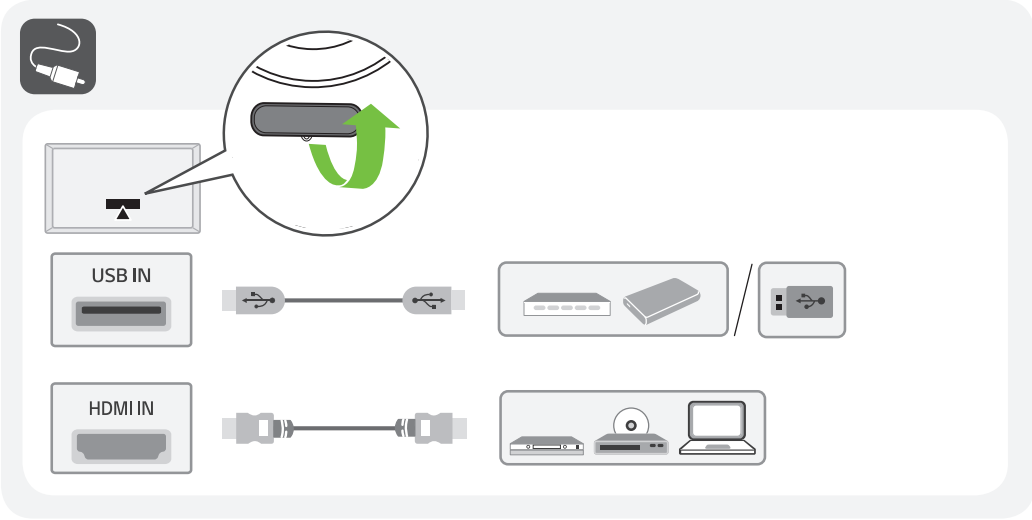
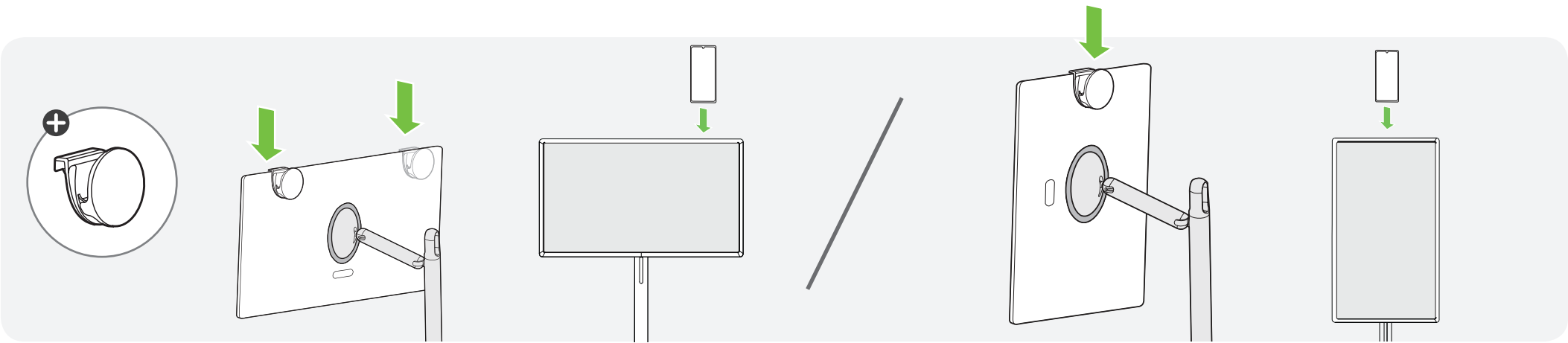
※ Do not lift the plug or pull it downward when disassembling the screen.
※ لا ترفع أو تسحب القابس للأسفل عند تفكيك الشاشة.

8

Lay the stand on the box packaging, remove the four screws, and then disassemble the stand bar.
ضع القاعدة على علبة التغليف، وقم بإزالة البراغي الأربعة، ثم فك شريط القاعدة.



4X



English

• Read **Safety and Reference**.

العربية

• قراءة **الأمان والمرجع**.

Français

• Lire le document **Sécurité et référence**.

Português

• Consulte o manual **Segurança e referência**.

ภาษาไทย

• โปรดอ่านคู่มือผู้ใช้**ความปลอดภัยและการอ้างอิง**

Tiếng Việt

• Đọc phần **An toàn và Tham khảo**.

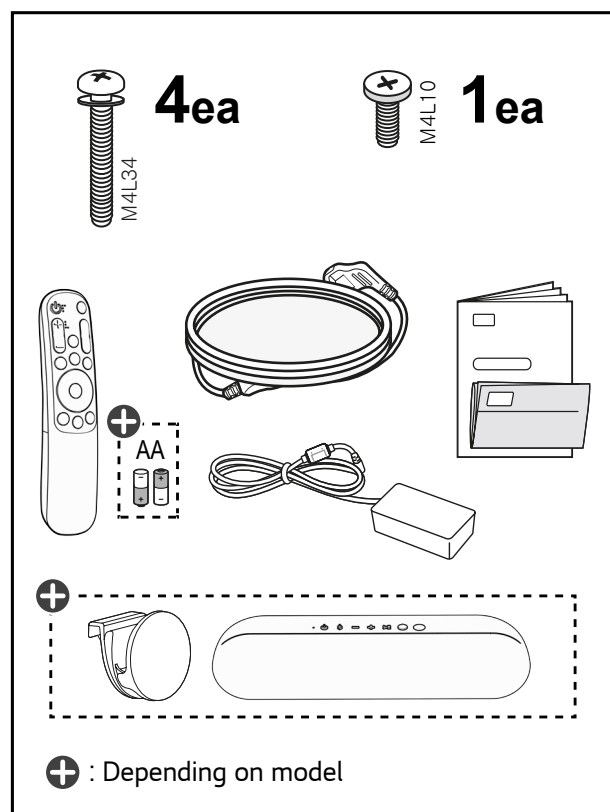
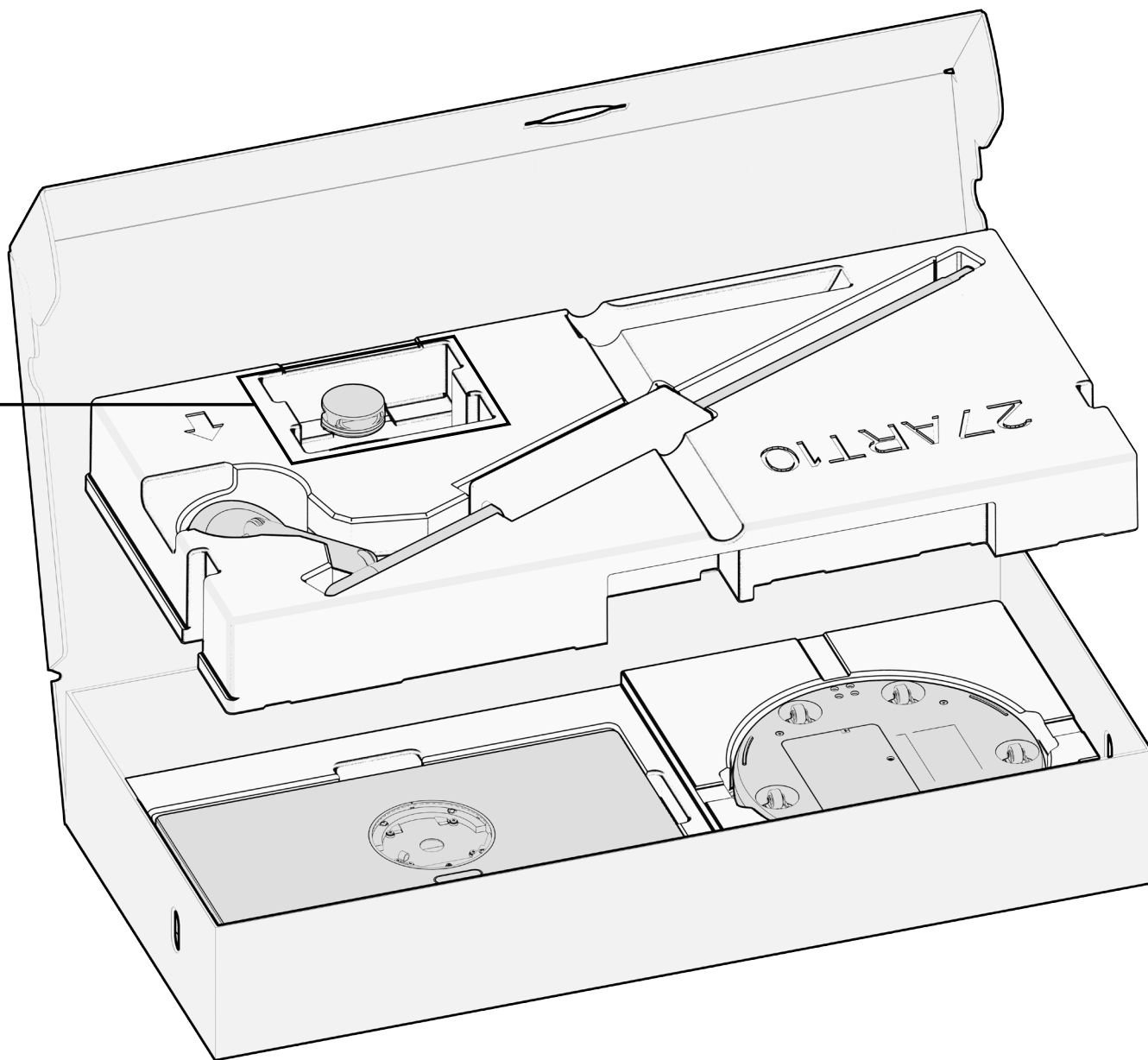
: Depending on model / حسب الطراز / Selon le modèle / Dependendo do modelo / ขึ้นอยู่กับรุ่น / Tùy theo mã sản phẩm

LG StanbyME Installation

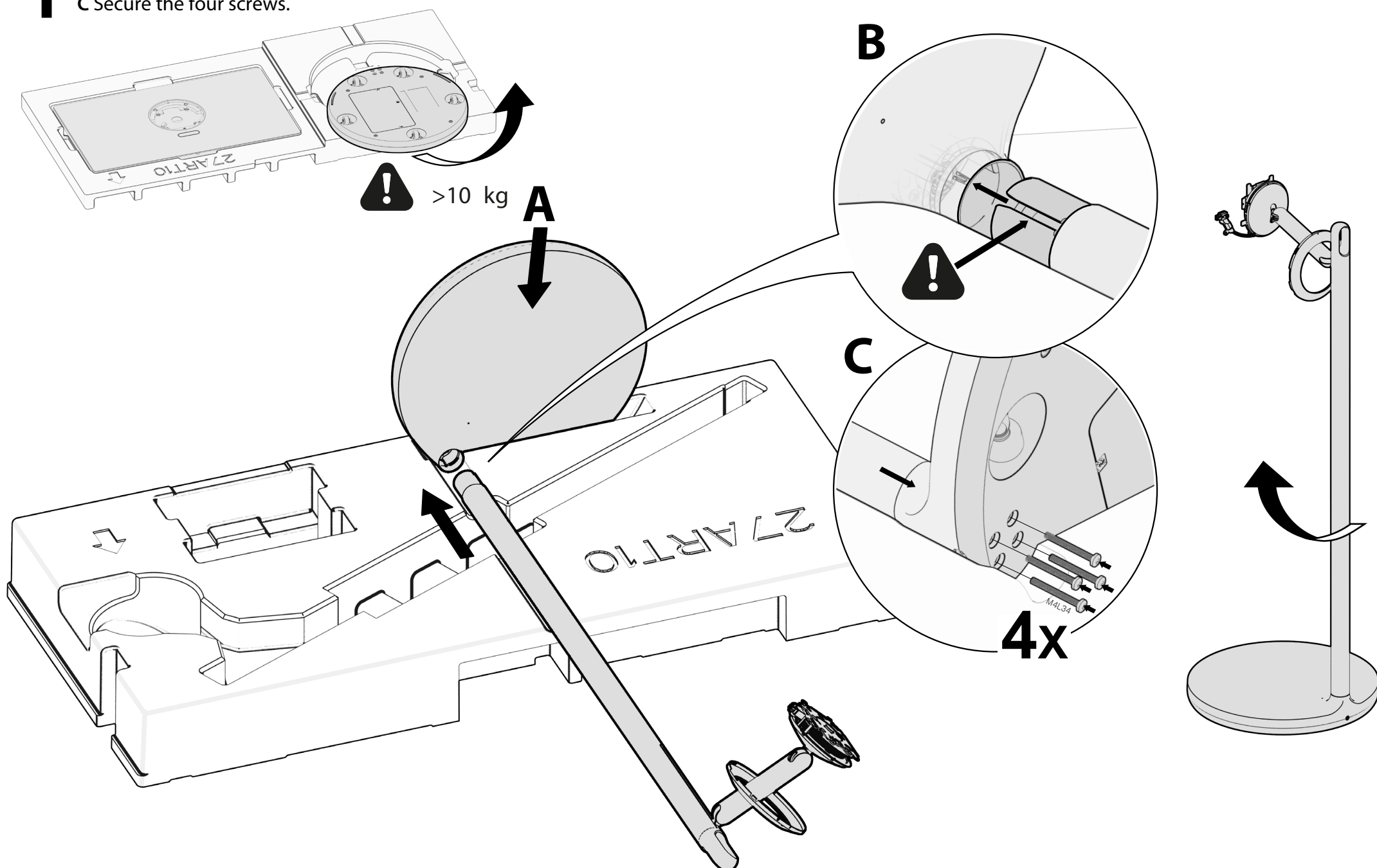
www.lg.com



User Install Guide

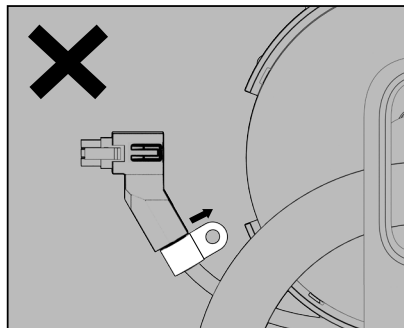
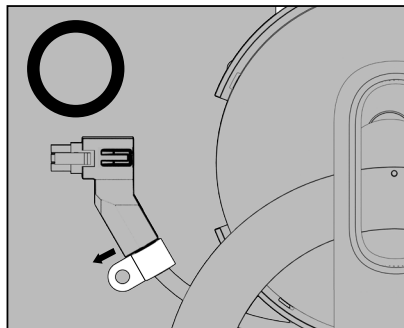
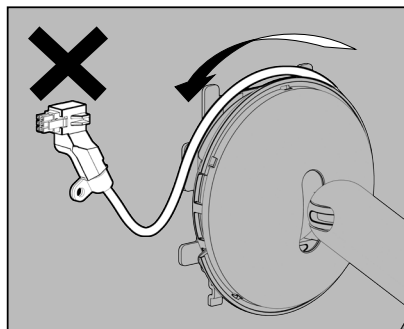
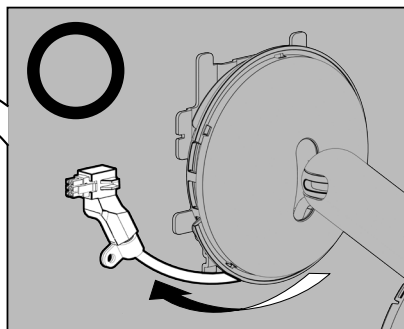
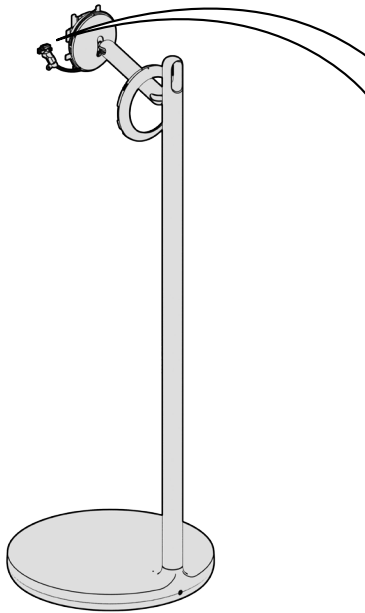
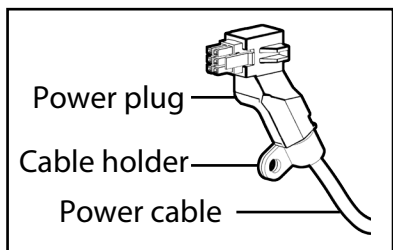


- 1 A Insert the stand base into the styrofoam groove as shown in the figure.
- B Insert the bar into the hole of the stand base along the groove until it reaches the parting line.
- C Secure the four screws.



2

Check the orientation of the power cable and cable holder.

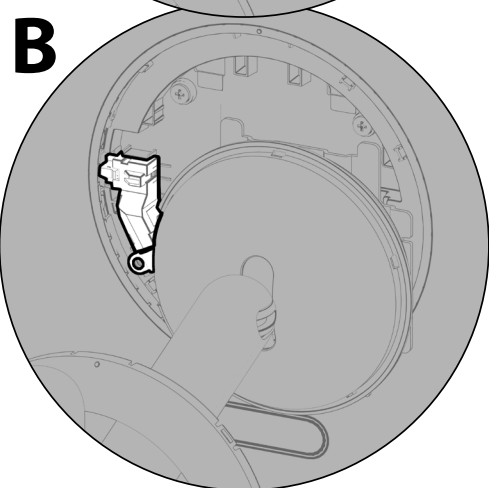
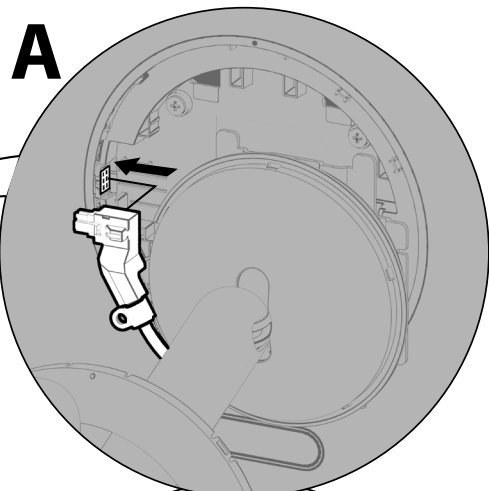
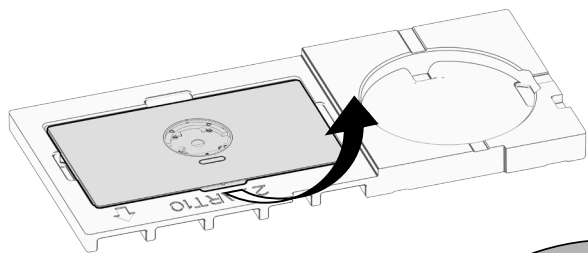


3

Hold the screen and secure the power plug.

A Check the position of the power plug on the back cover of the screen.

B Secure it tightly to the back cover side.

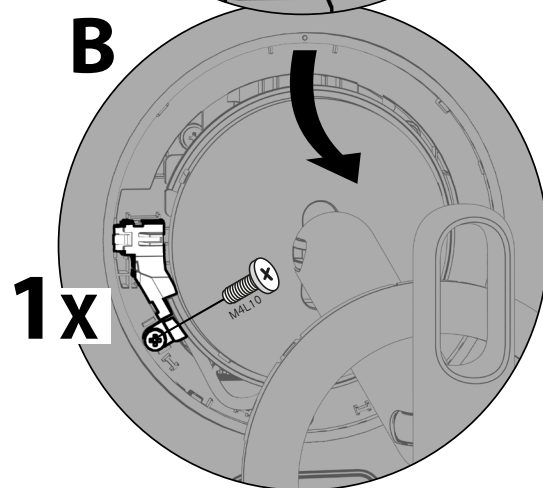
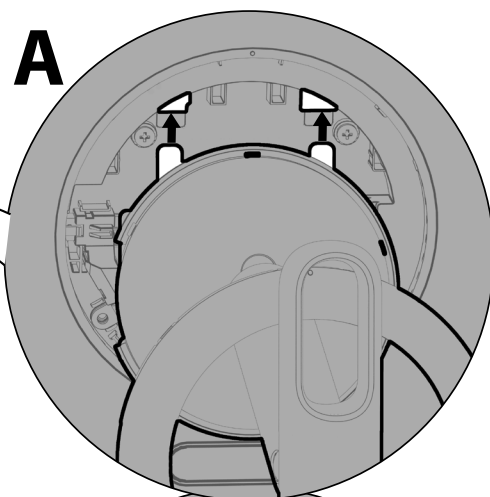


4

Secure the screen to the stand.

A Insert the stand hook into the back cover groove and tighten while pushing the lower part, as shown in the figure. (Push it until you hear a [click] sound.)

B Secure one screw to the cable holder.



5

Secure the ring cover of the stand.

A Align the screen back cover and ring cover [●mark] and install them.

B Check if it sits tightly as shown in the figure.

