



ENGLISH

FRANÇAIS

PORTUGUÊS

SIMPLE MANUAL

MUSICflow SJ9 SMART Hi-Fi AUDIO

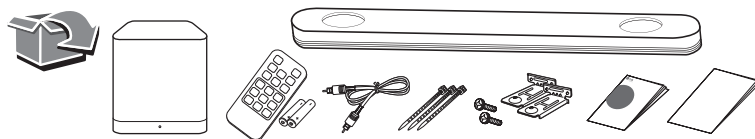
Wireless Multi-room Sound Bar

Please read this manual carefully before operating your set and retain it for future reference.
To view the instructions of advanced features, visit <http://www.lg.com> and then download
Owner's Manual. Some of the content in this manual may differ from your unit.

MODEL
SJ9

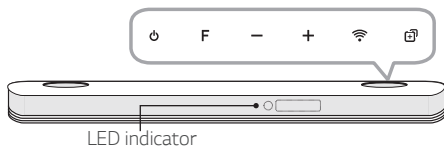


www.lg.com
Copyright © 2017 LG Electronics Inc. All Rights Reserved.



Front Panel

The buttons are located on the rear.

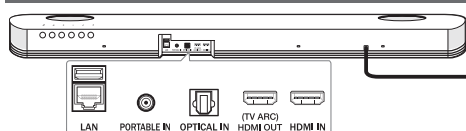


- ⏻ Standby
- F Selects function
- /+ Adjusts volume
- 📶 Connects wireless network.
- ⊕ Adds the additional Music Flow product to your network. (In case that one or more Music Flow product is connected.)

LED indicator: Shows connection status.

- White (Blinking): Waiting for network connection
- White (Staying on): Network connection is completed.
- White (Dimmed): Standby mode with network connection.
- Green (Staying on): The first group was set.
- Red (Staying on): Standby mode without network connection.

Rear Panel



- USB (Service only) S/W download connector.
- LAN Connect to router.
- PORTABLE IN Connect portable device.
- OPTICAL IN Connect to an optical device.
- HDMI OUT (TV ARC) Connect to a TV.
- HDMI IN Connect to device with HDMI OUT.

Subwoofer Connection

Place the wireless subwoofer near the sound bar and follow steps below.

- 1 Connect the power cord of the sound bar and the wireless subwoofer to the outlet.
- 2 Turn on the sound bar:

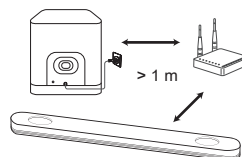
The sound bar and wireless subwoofer will be **automatically** connected. The subwoofer's green LED turns on.

Subwoofer Connection Manually

If the subwoofer does not make sound, try to connect manually.

- 1 Press **Pairing** button on the rear of the wireless subwoofer.
 - The green LED on the front of the wireless subwoofer blinks quickly.
- 2 Turn on the sound bar.
- 3 Pairing is completed.
 - The green LED on the front of the wireless subwoofer turns on.

Keep the sound bar and the subwoofer away from the device (ex. wireless router, microwave oven, etc.) over 1 m to prevent wireless interference.

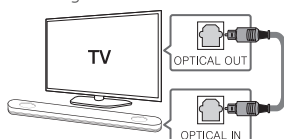


TV Connection

Connect the sound bar and TV using Optical (A) or HDMI ARC (B).

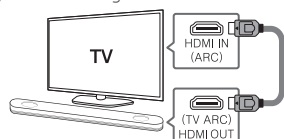
A Optical Connection

- 1 Connect the sound bar to the TV using Optical cable.
- 2 Set up [External Speaker (Optical)] on your TV setting menu.



B HDMI(ARC) Connection

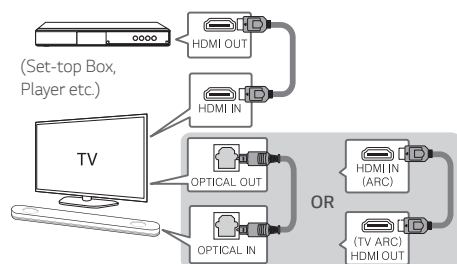
- 1 Connect the sound bar to the TV using HDMI cable.
- 2 Set up [External Speaker (HDMI ARC)] on your TV setting menu.



- HDMI connection is unavailable if your TV does not support HDMI ARC.
- If this unit is connected by OPTICAL and ARC at the same time, the ARC signal is a high priority.

Additional Device Connection

- 1 Connect to the external device like as follow.



- 2 Set the input source by pressing F on the remote control or unit repeatedly.

Network Connection



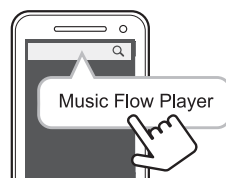
- 1 Check network condition. A router connected to network should be installed.
- 2 Connect your smart device to your home network.
- 3 Connect the sound bar to the power supply.
- 4 Connect the media server to your home network in order to enjoy music.



All devices should be connected to same router.

Download LG Music Flow Application

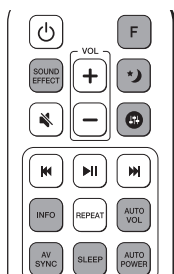
Download "Music Flow Player" on the App Store or Google Play Store.



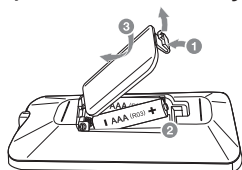
Launch Music Flow Player App

Follow the steps for wired or wireless connection displayed on the screen.

Remote control



Replacement of battery



SOUND EFFECT: Selects a sound effect mode.

F: Selects the function and the input source.

Mute: Turns down the volume at night.

EQ: Adjusts sound level of Treble, Bass and Sub-woofer.

INFO: Displays the input source information.

AV SYNC: Synchronizes the audio and video.

SLEEP: Sets the system to turn off automatically at a specified time.

AUTO VOL: Adjusts too loud or low output volume level appropriately.

AUTO POWER: Automatically turns on by an input source.

OPEN SOURCE SOFTWARE NOTICE INFORMATION

To obtain the source code under GPL, LGPL, MPL, and other open source licenses, that is contained in this product, please visit

<http://opensource.lge.com>

In addition to the source code, all referred license terms, warranty disclaimers and copyright notices are available for download.

LG Electronics will also provide open source code to you on CD-ROM for a charge covering the cost of performing such distribution (such as the cost of media, shipping and handling) upon email request to opensource@lge.com. This offer is valid for three (3) years from the date on which you purchased the product.

Additional Information

Specification

Power requirement	Refer to the main label.
Power consumption	Refer to the main label.
Dimensions (W x H x D)	Approx. 1200 mm x 58 mm x 145 mm
Amplifier (Total RMS Output power)	500 W RMS

Design and specifications are subject to change without notice.

