
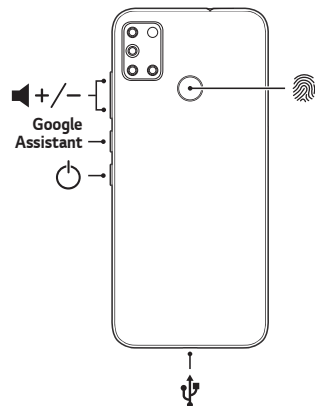




ENGLISH

Overview

To turn on the device, press and hold the  for a few seconds.



For more information, please visit www.lg.com to view the user guide.



Do NOT attempt to remove the back cover.

This device has a non-removable battery. Do not attempt to remove the back cover. Doing so may severely damage the battery and device, which could cause overheating, fire, and injury.

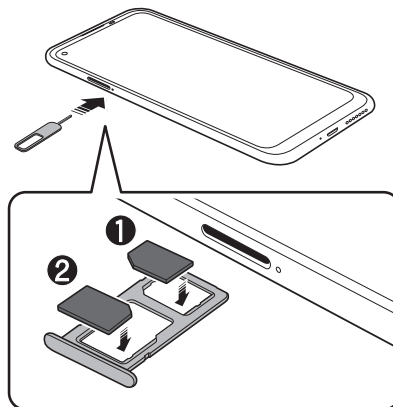


Restarting the device

- If the device becomes unresponsive, simply press and hold the Power key until the device restarts.

Installing the SIM card and memory card

Place the SIM card on the SIM card tray with the gold-coloured contacts facing downwards, as shown. Place the primary SIM card on the SIM card tray ① and the secondary SIM card on the SIM card tray ②.



- Always use a genuine Nano-SIM card supplied by the operator.
- You cannot place both the SIM card 2 and the memory card(optional) at the same time.

Guidelines for safe and efficient use

Please read these simple guidelines. Not following these guidelines may be dangerous or illegal.

Important information about the device

- The device apps, services, illustrations and content may differ depending on the area, service provider, software version and device, and are subject to change without notice.

Exposure to radio frequency energy

Radio wave exposure and Specific Absorption Rate (SAR) information.

This device has been designed to comply with applicable safety requirements for exposure to radio waves. These requirements are based on scientific guidelines that include safety margins designed to assure the safety of all persons, regardless of age and health.

- The radio wave exposure guidelines employ a unit of measurement known as the Specific Absorption Rate, or SAR. Tests for SAR are conducted using standardised methods with the device transmitting at its highest certified power level in all used frequency bands.
- While there may be differences between the SAR levels of various LG device models, they are all designed to meet the relevant guidelines for exposure to radio waves.
- The SAR limit recommended by the International Commission on Non-Ionizing Radiation Protection (ICNIRP) is 1.6 W/kg averaged over 10 g of tissue.
- The highest SAR value for this model tested for use at the ear is 0.940 W/kg (1g) and when worn on the body is 0.641 W/kg (1g) at 15 mm, which is 100% compliant with Indian Standards and Safe.
- This device meets RF exposure guidelines when used either in the normal use position against the ear or when positioned at least 15 mm away from the body. When a carry case, belt clip or holder is used for body-worn operation, it should not contain metal and should position the product at least 15 mm away from your body. In order to transmit data files or messages, this device requires a quality connection to the network. In some cases, transmission of data files or messages may be delayed until such a connection is available. Ensure the above separation distance instructions are followed until the transmission is completed.

Product care and maintenance

- Use only in-box accessories which are authorised by LG. LG does not guarantee any damage or failure which is caused by third party accessories.
- Do not disassemble this unit. Take it to a qualified service technician when repair work is required.
- Repairs under warranty, at LG's discretion, may include replacement parts or boards that are either new or reconditioned, provided that they have functionality equal to that of the parts being replaced.
- Keep away from electrical appliances such as TVs, radios and personal computers.
- The unit should be kept away from heat sources such as radiators or cookers.
- Do not drop the device or cause impacts to the device.
- Do not subject this unit to mechanical vibration or shock.

- Switch off the device in any area where you are required to by special regulations. For example, do not use your device in hospitals as it may affect sensitive medical equipment.
- Do not handle the device with wet hands while it is being charged. It may cause an electric shock and can seriously damage your device.
- Do not charge a handset near flammable material as the handset can become hot and create a fire hazard.
- Use a dry cloth to clean the exterior of the unit (do not use solvents such as benzene, thinner or alcohol).
- Do not charge the device when it is on soft furnishings.
- The device should be charged in a well ventilated area.
- Do not subject this unit to excessive smoke or dust.
- Do not keep the device next to credit cards or transport tickets. It can affect the information on the magnetic strips.
- Do not tap the screen with a sharp object as it may damage the device.
- Do not expose the device to liquid or moisture.
- Do not use, touch or attempt to remove or fix broken, chipped or cracked glass. Damage to the glass display due to abuse or misuse is not covered under the warranty.
- Your device is an electronic device that generates heat during normal operation. Extremely prolonged, direct skin contact in the absence of adequate ventilation may result in discomfort or minor burns. Therefore, use care when handling your device during or immediately after operation.
- If your device gets wet, immediately unplug it to dry off completely. Do not attempt to accelerate the drying process with an external heating source, such as an oven, microwave or hair dryer.
- A mobile device requires proper air circulation in order to dissipate heat. Direct skin contact and inadequate circulation of air flow to the device may cause the device to overheat. The device must be at least 1.0 cm from between the user's body.
- Prevent dust of any other foreign substances from getting into the Charger/USB cable port. It may cause heat or fire.
- Avoid exposing the device to low air pressure at high altitude.
- Do not expose the device to extremely low air pressure. Otherwise, it can cause explosion of the battery or leakage of flammable liquid or gas.
- Please ensure that the product does not get in contact with liquid. Do not use or recharge the product if it is wet. Once the product becomes wet, the liquid damage indicator changes color. Please note that this will limit you from receiving any free-of-charge repair services provided under warranty.

Efficient device operation

- Do not use your device near medical equipment without requesting permission. Please consult your doctor to determine if operation of your device may interfere with the operation of your medical device.
- Pacemaker manufacturers recommend that you leave at least 15 cm of space between other devices and a pacemaker to avoid potential interference with the pacemaker.
- This device may produce a bright or flashing light.
- Some hearing aids might be disturbed by devices.
- Use your device in temperatures between 0 °C and 40 °C, if possible. Exposing your device to extremely low or high temperatures may result in damage, malfunction, or even explosion.

Quick Start Guide



LM-K610IM

Precautions

- Use a wireless hands-free system (headphone, headset) with a low power Bluetooth emitter.
- Keep your calls short or send text message (SMS) instead. This advice applies especially to children, adolescents and pregnant women.
- Use the cell phone in good quality network signal.
- People having active medical implants should preferably keep the cell phone at least 15 cm away from the implant.

Road safety

Check the laws and regulations on the use of devices in the area when you drive.

- Do not use a hand-held device while driving.
- Give full attention to driving.
- Pull off the road and park before using it.
- RF energy may affect some electronic systems in your vehicle such as car stereos and safety equipment.
- When your vehicle is equipped with an air bag, do not obstruct with installed or portable wireless equipment. It can cause the air bag to fail or cause serious injury due to improper performance.
- If you are listening to music whilst out and about, please ensure that the volume is at a reasonable level so that you are aware of your surroundings. This is of particular importance when near roads.

Avoid damage to your hearing



To prevent possible hearing damage, do not listen at high volume levels for long periods.



Excessive sound pressure from earphones and headphones can cause hearing loss.

Glass Parts

Some parts of your device are made of glass. This glass could break if your device is dropped on a hard surface or receives a substantial impact. If the glass breaks, do not touch or attempt to remove it. Stop using your device until the glass is replaced by an authorised service provider.

Blasting area

Do not use the device where blasting is in progress. Observe restrictions and follow any regulations or rules.

Potentially explosive atmospheres

- Do not use your device at a refueling point.
- Do not use near fuel or chemicals.
- Do not transport or store flammable gas, liquid or explosives in the same compartment of your vehicle as your device or accessories.

In aircraft

Wireless devices can cause interference in aircraft.

- Turn your device off before boarding any aircraft.
- Do not use it on the ground without permission from the crew.

Children

Keep the device in a safe place out of the reach of small children. It includes small parts which may cause a choking hazard if detached.

Emergency calls

Emergency calls may not be available on all mobile networks. Therefore you should never depend solely on your device for emergency calls. Check with your local service provider.

Options for making Emergency calls when screen is Locked/Unlocked.

- Long press Power Key to list options. Select 'Emergency' option
- Short press Power Key thrice very quickly
- Long press 'Emergency call' soft key in locked screen
- Short press 'Emergency call' soft key in locked screen to select Emergency dialer or Emergency Contacts

Battery information and care

- Do not disassemble or short-circuit the battery.
- Replace the battery when it no longer provides acceptable performance. The battery pack may be recharged hundreds of times before it needs replacing.
- Do not expose the battery charger to direct sunlight or use it in high humidity, such as in the bathroom.
- Do not leave the battery in hot or cold places, as this may deteriorate battery performance.
- Risk of explosion if battery is replaced by an incorrect type. Dispose of used batteries according to the instructions.
- Always unplug the charger from the wall socket after the device is fully charged to save unnecessary power consumption of the charger.
- Make sure that no sharp-edged items such as animal's teeth or claws, come into contact with the battery. This could cause a fire.



- A charging adapter that supports fast charging is included with the product.
- The fast charging feature may not work if a fast charging adapter other than the genuine adapter provided with the product is used.

Trademarks

- Bluetooth® is a registered trademark of Bluetooth SIG, Inc. worldwide.
- Wi-Fi® and the Wi-Fi logo are registered trademarks of the Wi-Fi Alliance.
- Copyright ©2020 LG Electronics Inc. All rights reserved. LG and the LG logo are registered trademarks of LG Group and its related entities.
- Google is a trademark of Google LLC.
- Covered by one or more claims of the patents listed at patentlist.hevcaadvantage.com.



WARNING

Notice for Battery replacement

- For your safety, do not remove the battery incorporated in the product. If you need to replace the battery, take it to the nearest authorised LG Electronics service point or dealer for assistance.
- Li-Ion Battery is a hazardous component which can cause injury.
- Battery replacement by a non-qualified professional can cause damage to your device.

Open Source Software Notice Information

To obtain the source code under GPL, LGPL, MPL, and other open source licenses, that is contained in this product, please visit <http://opensource.lge.com>.

In addition to the source code, all referred license terms, warranty disclaimers and copyright notices are available for download.

LG Electronics will also provide open source code to you on CD-ROM for a charge covering the cost of performing such distribution (such as the cost of media, shipping, and handling) upon email request to opensource@lge.com.

This offer is valid for a period of three years after our last shipment of this product. This offer is valid to anyone in receipt of this information.

Regulatory information

(Regulation ID number, BIS Mark, E-labeling, etc.)

For regulatory details, go to **Settings > About phone > Regulatory labels**.

HOW TO UPDATE YOUR DEVICE

Access to latest firmware releases, new software functions and improvements.

- Select the **System update in settings menu on your device**.

This handset is capable of sending messages in following languages: English, Hindi and Marathi.

Also this handset is capable of reading received messages in following languages: English, Hindi, Marathi, Punjabi, Tamil, Telugu, Malayalam, Bengali, Gujarati, Kannada, Assamese, Kashmiri, Konkani, Manipuri, Nepali, Oriya, Sanskrit, Sindhi, Urdu, Bodo, Santali, Maithili and Dogri.



Disposal of your old appliance (as per e-waste Rules)

1 When this crossed out wheeled bin symbol is depicted on the product and its operator's manual, it means the product is covered by the e-waste Management and Handling Rules, 2011 and are meant to be recycled, dismantled, refurbished or disposed off.

2 Do:

- The product is required to be handed over only to the authorised recycler for disposal.
- Keep the product in isolated area, after it becomes non-functional/unrepairable so as to prevent its accidental breakage.

Don't:

- The product should not be opened by the user himself/herself, but only by authorised service personnel.
- The product is not meant for re-sale to any unauthorised agencies/scrap dealer/kabariwalah.
- The product is not meant for mixing into household waste stream.
- Do not keep any replaced spare part(s) from the product in exposed area.

3 Any disposal through unauthorised agencies/person will attract action under Environment (Protection) Act 1986.

4 This product is complied with the requirement of Hazardous Substances as specified under Rule 13 (1) & (2) of the E-Waste (Management & Handling) Rules, 2011.

5 To locate a nearest collection centre or call for pick-up (limited area only) for disposal of this appliance, please contact Toll Free No. 1800-315-9999 / 1800-180-9999 for details. All collection centre and pick up facilities are done by third parties with LG Electronics India Pvt. Ltd. Merely as a facilitator. For more detailed information, please visit : <http://www.lge.com/in>.

Customer Care

For any query related to after sales service, you may please contact us on the numbers listed below.

24 x 7 CUSTOMER CARE	
1800-315-9999 1800-180-9999 <small>(Toll Free)</small>	5757554 <small>(Send SMS)</small>
www.lg.com/in/support	
	www.facebook.com/lgindiaspage www.twitter.com/LGIndiaTweets

	LG WhatsApp No. 9711709999
	LG Service India Mobile App Available at Google Play

LG Electronics India Pvt. Ltd.

Regd. Office : A-24/6, Mohan Cooperative Industrial Estate,
Mathura Road, New Delhi-110044