

ENGLISH

Specification

Power consumption

- Refer to the main label.

AC adapter

- Model : DA-50F25
- Manufacturer : Asian Power Devices Inc.
- Input : 100 - 240 V ~ 50 - 60 Hz 1.5 A Max.
- Output : 25 V $\overline{\text{---}}$ 2 A
- Model : MS-Z2000R250-050D0-P
- Manufacturer : MOSO POWER SUPPLY TECHNOLOGY CO., LTD.
- Input : 100 - 240 V ~ 50/60 Hz Max. 1.5 A
- Output : 25 V $\overline{\text{---}}$ 2 A
- Model : A650-250200W-M21
- Manufacturer : Dongguan Aohai Technology Co., Ltd.
- Input : 100 - 240 V ~ 50/60 Hz 1.5 A
- Output : 25 V $\overline{\text{---}}$ 2 A

Dimensions (W x H x D): Approx. 890.0 mm x 65.0 mm x 119.0 mm

Bus Power Supply (USB): 5 V $\overline{\text{---}}$ 500 mA

Amplifier (Total RMS Output power): 380 W RMS

Open Source Software Notice Information

To obtain the source code that is contained in this product, under GPL, LGPL, MPL, and other open source licenses that have the obligation to disclose source code, and to access all referred license terms, copyright notices and other relevant documents, please visit <https://opensource.lge.com>.

LG Electronics will also provide open source code to you on CD-ROM for a charge covering the cost of performing such distribution (such as the cost of media, shipping, and handling) upon email request to opensource@lge.com.

This offer is valid to anyone in receipt of this information for a period of three years after our last shipment of this product.

POWER: This unit operates on a mains supply of 100 - 240 V ~ 50 - 60 Hz.

Wiring: This unit is supplied with a BS 1363 approved main plug. When replacing the fuse, always use a fuse of the same rating and approved to BS 1362. Never use this plug with the fuse cover omitted. To obtain a replacement fuse cover contact your dealer. If the type of plug supplied is not suitable for the mains sockets in your home, then the plug should be removed and a suitable type fitted. Please refer to the wiring instructions below.

Warning: A mains plug removed from the mains lead of this unit must be destroyed. A mains plug with bared wires is hazardous if inserted in a mains socket. Do not connect either wire to the earth pin, marked with the letter E or with the earth symbol \perp or coloured green or green and yellow. If any other plug is fitted, use same rating of fuse in the plug.

Important: The wires in this mains lead are coloured in accordance with the following codes:

- **BLUE: NEUTRAL, BROWN: LIVE** - As the colours of the wires in the mains lead of this unit may not correspond with the coloured marking identifying the terminals in your plug, proceed as follows: The wire which is coloured blue must be connected to the terminal which is marked with the letter N or coloured black. The wire which is coloured brown must be connected to the terminal which is marked with the letter L or coloured red.



SIMPLE MANUAL

WIRELESS SOUND BAR

S75Q



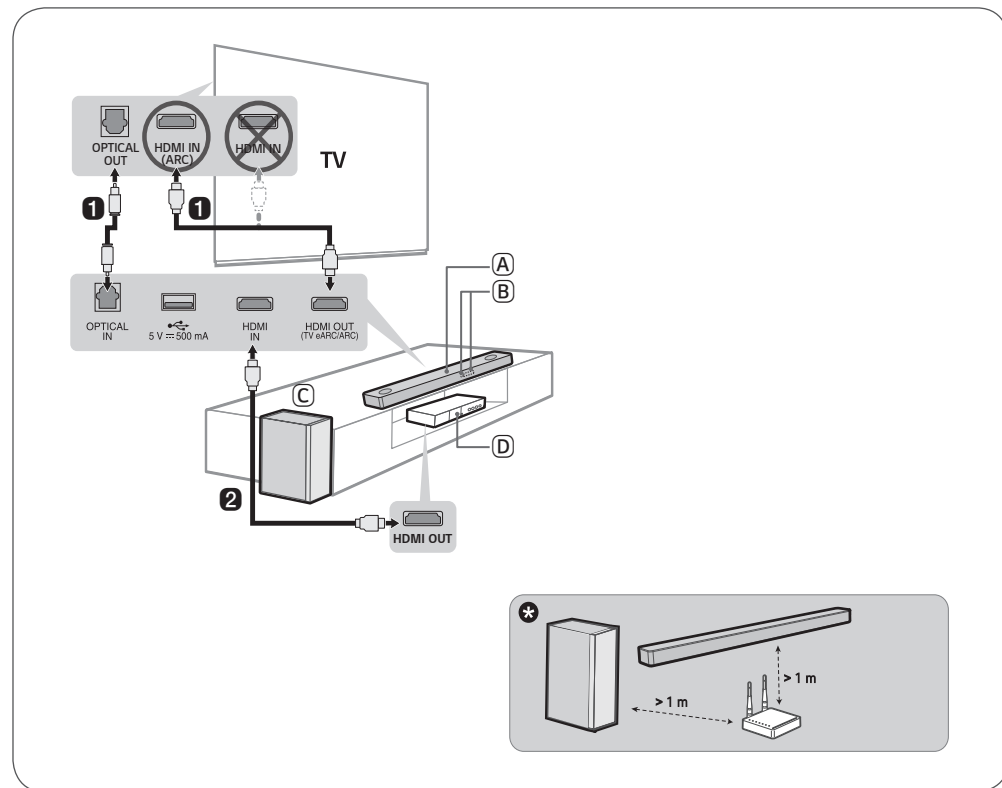
MFL71879869

2310_Rev02



www.lg.com

Copyright © 2022-2023 LG Electronics Inc. All Rights Reserved.



- 

2023-10-23 11:42:08