



SIMPLE MANUAL

# Mini Hi-Fi System

ENGLISH

Please read this manual carefully before operating your set and retain it for future reference.

To view the instructions of advanced features, visit <http://www.lg.com> and then download Owner's Manual.

Some of the content in this manual may differ from your unit.

MODEL  
CJ98



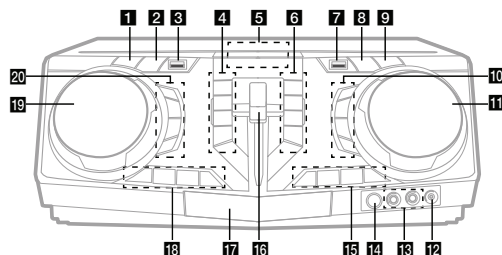
MFL69783731

[www.lg.com](http://www.lg.com)

Copyright © 2017-2018 LG Electronics Inc. All Rights Reserved.



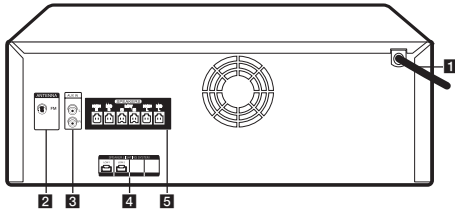
## Front Panel



- 1** (Standby)  
Turns the power on or off.
- 2** **DEMO**  
In power off status, if you press **DEMO**, show DEMO mode.
- 3** **USB 1 Port**  
You can play sound files by connecting the USB device.
- 4** **PARTY THRUSTER MODE**  
Selects PARTY THRUSTER mode.  
 (Stop)  
Stops playback or cancels DELETE function.  
 (Skip/Search)  
- Skips backward.  
- Searches for a section within a track/file.  
- Selects the radio stations.  
 (Open/Close)  
Opens and closes the disc tray.
- 5** Display window
- 6** **DJ LOOP**  
Selects DJ LOOP mode.  
(DJ LOOP mode can use during CD/USB playback.)  
 (Play/Pause)  
- Starts or pauses playback.  
- Selects stereo/mono.  
 (Skip/Search)  
- Skips forward.  
- Searches for a section within a track/file.  
- Selects the radio stations.  
**REGION EQ / BASS BLAST**  
- Chooses region equalizer.  
- Press and hold to select BASS effect directly.
- 7** **USB 2 Port**  
You can play sound files by connecting the USB device.
- 8** **F (Function)**  
Selects the function and input source.
- 9** **WIRELESS LINK**  
- Selects MASTER or SLAVE on WIRELESS PARTY LINK mode.  
- Enable or disable WIRELESS PARTY LINK mode.

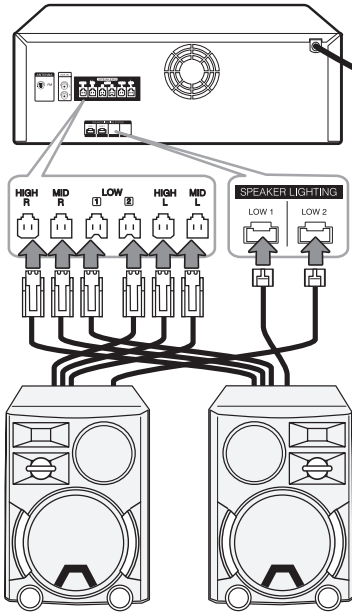
- 10** **LIGHTING**  
Turns on/off the lighting effects.
- VOCAL EFFECTS**  
Selects VOCAL EFFECTS mode.
- VOICE CANCELLER**  
You can enjoy the function while playing the music, by reducing singer vocal of music in the various source.
- ECHO**  
Selects ECHO mode.
- 11** **MASTER VOLUME / MULTI JOG**  
- Adjust speaker volume.  
- Selects lighting mode and vocal effects mode.
- 12** **PORT. (Portable) IN jack**
- 13** **MIC (Microphone) 1/2 jack**
- 14** (Remote sensor)
- 15** **KEY CHANGER (# / b )**  
Changes the key to suit your vocal range.  
**MIC (Microphone) +/-**  
Adjust microphone volume.
- 16** **PARTY THRUSTER lever**  
Slide up the lever to create a party atmosphere.
- 17** Disc tray
- 18** **CLUB, DRUM, USER (DJ PRO)**  
Selects CLUB, DRUM or USER sound effect to mix.  
(If you want to use USER, you have to register a source with "Music Flow Bluetooth" app)  
**1, 2, 3, 4 (DJ PRO PAD)**  
Press a desired sound pad.
- 19** **SCRATCH / SEARCH & LEVEL CONTROL**  
- Turns clockwise or counterclockwise to make scratch sound.  
- Turns clockwise or counterclockwise to control the USER EQ level.  
- Searches a folder or a file.  
- Adjust DJ EFFECT level.
- 20** **DJ EFFECT**  
Selects a desired DJ EFFECT.  
**USER EQ**  
Selects the sound effect created by your own.  
**SEARCH**  
Moves to folder or file in selection mode.  
**OK**  
Selects a folder when searching a file.

## Rear Panel




- 1** Power cord
- 2** ANTENNA (FM)
- 3** AUX IN (L/R)  
Connect an auxiliary device.
- 4** SPEAKER LIGHTING SYSTEM  
Connect the speaker lighting cables.
- 5** SPEAKERS connector

## Speaker Connection



## Additional Information

### Specifications

Power Requirements	Refer to the main label on the unit.
Power Consumption	Refer to the main label on the unit. Networked standby : 0.5 W (If all network ports are activated.)
Dimensions (W x H x D)	Approx. 450 mm x 170 mm x 349 mm
Bus Power Supply (USB)	5 V  500 mA
Amplifier (Total RMS output power)	3,500 W RMS

Design and specifications are subject to change without notice.

### Controller App



Download the **Music Flow Bluetooth** App to your device. (Android only)

### LG Sound Sync (Wireless)



For more information, download the online owner's manual. <http://www.lg.com>

## Additional Information

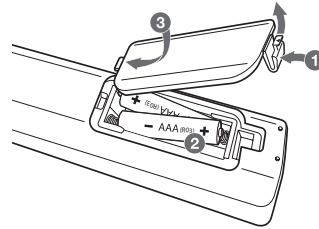
### Caution

- When you use the multiple socket, it is advisable to use 15 A socket. 10 A socket may cause power off due to lack of power supply.
- Do not place objects on the speakers. It may cause the objects to fall and make property damage.
- Install the speakers on a firm surface not to slide. The vibration caused by the strong output can shake and move the speakers.
- Avoid turning up max volume in a small enclosed space. The powerful and intense output of the speakers can shake the ceiling and get the objects in the room falling.
- To protect from hearing damage, keep the sufficient distance from the speaker. The overwhelming sound from the speaker may cause a person's hearing damage.
- Allow more than 20 cm of free space between the main set and the speakers when you install the main set on the ground. High sound pressure from the speakers can make the set tremble to disturb the CD playback.
- Connect the power cord to wall outlet directly if possible. Or when you use an extension cable, it is highly recommended to use an extension cable of 110 V / 15 A or 230 V / 15 A, otherwise the unit may not operate properly because of the lack of power supply.
- Do not overload the extension cord with excessive electrical load.

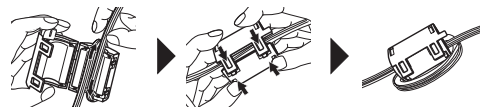
### How to disconnect the wireless network connection or the wireless device

Turn off the unit by pressing the power button for more than 5 seconds.

### Replacement of battery



### About Ferrite Core (Optional)



Wind power cord cable around the ferrite core twice.

### Declaration of Conformity



Hereby, LG Electronics declares that the radio equipment type Mini Hi-Fi System is in compliance with Directive 2014/53/EU. The full text of the EU declaration of conformity is available at the following internet address:

<http://www.lg.com/global/support/cedoc/cedoc#>

For consideration of the user, this device should be installed and operated with a minimum distance of 20 cm between the device and the body.

Frequency range	Output power (Max.)
2402 to 2480 MHz	10 dBm



-----

-----

-----

-----

-----

-----

-----

-----

-----

-----



-----

-----

-----

-----

-----

-----

-----

-----

-----

-----



-----

-----

-----

-----

-----

-----

-----

-----

-----

-----



### Российская Федерация

Импортер ООО "ЛГ Электроникс Рус"

Адрес импортера: 143160 Российская Федерация, Московская область, Рузский район, сельское поселение Дороховское, 86 км. Минского шоссе, д.9

Адрес производителя : ЛГ Электроникс (Хужоу) Инк., завод Хатаи  
516006, Китай, пров. ГуанДонг, г. Хужоу, Промышленная зона  
Жонгкай, Индустриальный парк Хутай, ХуФенг Донг Уи Роуд, 13.

**Сделано в Китае**

### Україна

Вироблено в: ЛГ Електронікс (Хужоу) Інк., завод Хатай  
516006, Китай, пров. ГуанДонг, м. Хужоу, Промислова зона Жонгкай,  
Індустріальний парк Хутай, ХуФенг Донг Уі Роуд, 13.

### Қазақстан Республикасы

Импорттаушы АҚ «ЭЛ Джи Электроникс Алматы Қазақстан», 050061, Алматы қ., Көкорай көшесі, 2А/9

Өндірушінің мекенжайы: LG Electronics(Huizhou) Inc. Huitai Factory  
516006, Қытай, ГуанДонг ауданы, Хужоу қаласы, Жонгкай өнеркәсіптік аймағы,  
Хутай Индустриялық саябағы, ХуФенг Донг Уи Роуд, 13.

Қазақстан Республикасы территориясында тұтынушылардан келіп түскен талаптар мен ұсыныстарды қарайтын және тауарды жөндеу мен техникалық қызмет көрсететін ұжым:

АҚ «Эл Джи Электроникс Алматы Қазақстан», 050061, Қазақстан Республикасы, Алматы қ., Көкорай көшесі, 2А/9. Басқа сервис орталықтары жайында мағлұматты "Тұтынушыға қызмет көрсету орталығына" телефон шалу арқылы білуге болады.

**Қытайда жасалған**